



United States  
Environmental Protection  
Agency

# SUPERFUND REDEVELOPMENT PROGRAM REUSE PLANNING AND TECHNICAL ASSISTANCE FOR SUPERFUND SITES

MARCH 2026

## AVAILABLE ASSISTANCE

EPA's Superfund Redevelopment Program provides reuse planning and technical assistance to communities, stakeholders and EPA's regions to support the productive reuse and redevelopment of Superfund sites.

These regional support projects aim to facilitate redevelopment, remove barriers to productive reuse and ensure that future uses of Superfund sites are well aligned with the cleanup and removal/remedial process.

## ELIGIBLE SITES

Regional support projects may focus on a single property at a Superfund site or include a larger neighborhood or area.

SRP's assistance can be offered at any phase of cleanup from Discovery to Removal/Remedial Action and even many years after the remedy has been complete.

**For more information visit  
or scan the QR code:**

[https://www.epa.gov/  
superfund-redevelopment/  
technical-assistance-and-  
reuse-planning-support-  
superfund-sites](https://www.epa.gov/superfund-redevelopment/technical-assistance-and-reuse-planning-support-superfund-sites)



## COMMUNITY BENEFITS

- Identifying reuse as early as possible can save time and money on the cleanup.
- Preventing or eliminating a vacant and underutilized property.
- Increasing community support for the remedial process.
- Providing long-term protectiveness of a remedy.
- Providing economic benefits in terms of jobs, tax revenue and increased property values.
- Improving quality of life through amenities such as parks, trails and civic spaces.

# WHAT TYPES OF SERVICES ARE AVAILABLE?

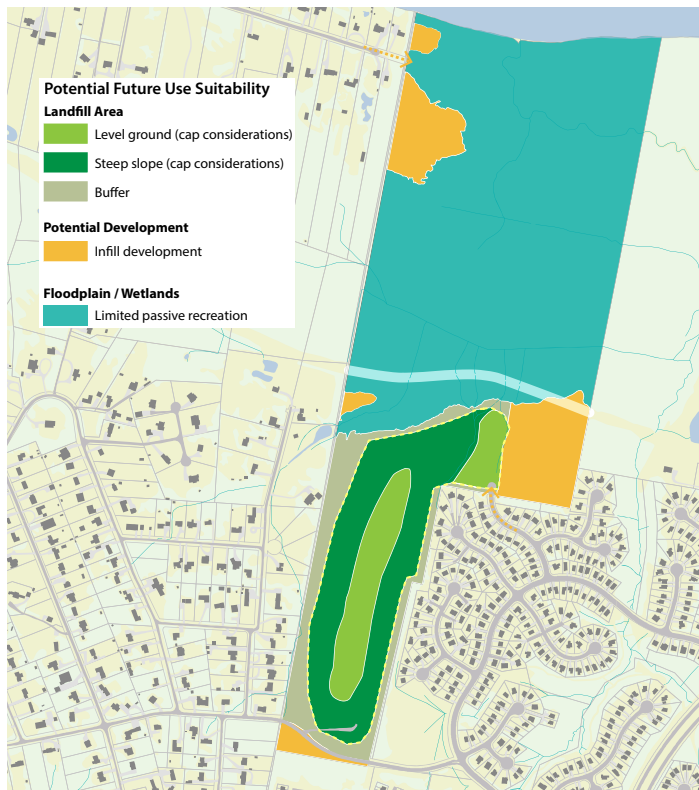
Technical assistance and reuse planning support cover a variety of activities. These efforts can be structured as just-in-time services or as part of a longer-term redevelopment support process. EPA's Superfund Redevelopment Program tailors technical assistance and reuse planning activities to reflect site characteristics and the needs of communities, EPA site teams and other stakeholders. EPA's Regional Redevelopment Coordinator can assist in identifying a set of services that meet the needs of the site team and local community.



## REDEVELOPMENT PLANNING

Includes land use research, analysis and community engagement to identify potential future uses, develop a reuse concept plan or evaluate future use compatibility with the remedy. Specific services include:

- **Reuse Situation Assessment** to document preliminary reuse goals, land use context, local initiatives, key stakeholder interests, reuse considerations and recommendations for additional reuse support.
- **Reuse Assessment** to identify reasonably anticipated future land use (RAFLU) (industrial/commercial, residential, open space) for specific areas of the site to inform the remedial process.
- **Reuse Plan** that integrates community goals, site analysis, land use context and the remedy into a Future Use Framework (showing geographic-specific uses of the site) or Concept Plan (showing layout of potential future use features) to guide local planning, development and the remedial process.
- **Energy Reuse Assessment** provides a reuse assessment focused on site-specific energy generation opportunities. They typically include resource screening, site suitability analysis, and preliminary financial assessment activities.



## INTER-AGENCY FACILITATION AND COORDINATION

Design and facilitation of inter-agency workgroups and stakeholder meetings to resolve conflicts and align site reuse and remedial processes.

## COMMUNITY ENGAGEMENT

Support in designing an engagement process, conducting community outreach, developing a reuse steering committee, developing a Community Engagement Plan, and facilitating public meetings, working groups, charrettes and open house forums.

For communities, services can be tailored to build capacity for nearby residents to participate in redevelopment planning and benefit from site redevelopment. Tools are available to help build shared understanding in situations of conflict, support community leaders in sharing their visions for reuse, and place community aspirations for reuse within the context of regional planning and investments.

## OWNER AND PROSPECTIVE PURCHASER ASSISTANCE

Support in leveraging redevelopment opportunities, including:

- Strategy and technical support to address considerations such as ownership, Bona Fide Prospective Purchaser liability protection, Superfund and windfall liens, and compatibility between any existing or future site restrictions and potential reuse.
- Prospective Purchaser Inquiry support and discussion facilitation including strategy development, checklists, stakeholder coordination and meeting facilitation.



## GIS ANALYSIS AND MAPS

Development of spatial datasets of site boundaries and physical features; spatial analysis for individual or multiple sites to identify potential future uses and proximity to regional assets; or other analysis or data development.

## PROPERTY RESEARCH

Title searches for chain of title and encumbrance information. Appraisals of property “as impaired” to determine value of property with site restrictions as a starting point for settlement negotiations.

## INSTITUTIONAL CONTROLS RESEARCH

Support with institutional controls evaluation and planning including research and assembling information to identify institutional control requirements, status, options and issues to help align cleanup and land use. Property owner research and mapping, assembling information for Institutional Control Implementation and Assurance Plans, and reuse assessments summarizing institutional and future use goals to help address reuse barriers.

## READY FOR REUSE DETERMINATION

Develop an environmental status report that provides a technical determination that a site is “ready for reuse” and will remain protective for that use, so long as any use limitations established by EPA continue to be met.

## OTHER SUPPORT

EPA can tailor technical assistance to meet the needs of specific sites, site teams and communities. Contact your Regional Redevelopment Coordinator if you have ideas for tools or support not included in this handout.



# GETTING STARTED

- Contact EPA's Regional Redevelopment Coordinator for your area if you would like to request support.
- The Regional Redevelopment Coordinator will then request and coordinate the technical assistance with EPA Headquarters.
- Once approved, the technical assistance is provided by an EPA consultant, Skeo Solutions, with over 20 years of Superfund redevelopment experience nation-wide.

Find the coordinator for your state here: <https://www.epa.gov/superfund-redevelopment/connect-our-superfund-site-redevelopment-experts>



## EPA SUPERFUND REDEVELOPMENT

For more information, please visit: <https://www.epa.gov/superfund-redevelopment/>

