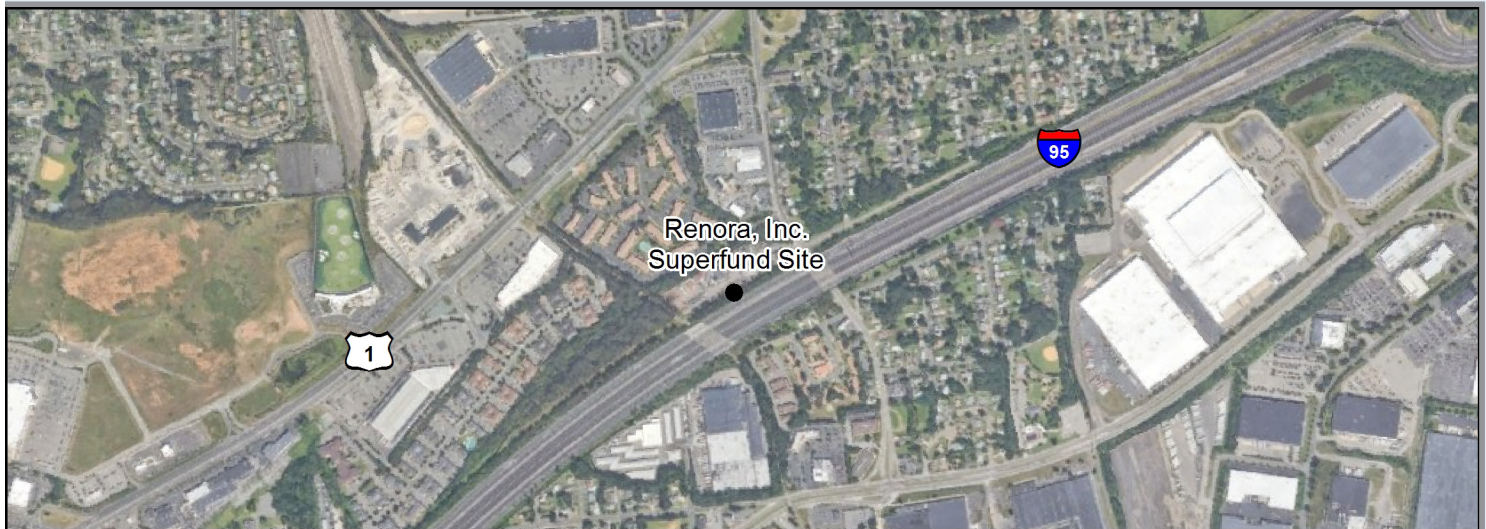




Ready for Reuse Renora, Inc. Property

83 South Main Street, Edison Township, New Jersey 08837



Sources: ESRI, DigitalGlobe, GeoEye, Earthstar Geographics, DeLorme, Tele Atlas, AND, First American, UNEP-WCMC, USGS, CNES/Airbus DS, USDA, AeroGRID, IGN, Google Earth and the GIS User Community.

Aerial view of the site.

Site Name: Renora, Inc. Superfund Site

Size: 1 acre

Existing Site Infrastructure: The site is currently fenced. An active rail line and highway are located about half a mile from the site.

Readiness for Reuse: EPA determined the site had achieved the Sitewide Ready for Anticipated Use performance measure in June 2006. The property is zoned for commercial use.

Use Restrictions: A Declaration of Environmental Restrictions restricts excavation beyond a depth of five feet on the site.

SETTING:

- The site, totaling 1 acre, consists of a former waste facility that accepted hazardous oils from 1978 to 1982. Poor facility maintenance contaminated soil on the property with polychlorinated biphenyls and polyaromatic hydrocarbons.
- The site is in a mixed industrial, commercial and residential business area along the New Jersey Turnpike (Interstate 95).
- Surrounding population: 0.5 mile, 3,481 people | 2.5 miles, 53,069 people | 4 miles, 161,463 people.

REMEDIAL STATUS:

- Remedy construction took place between 1988 and 1996.
- Cleanup activities included removal of drums, tankers and trailers, as well as excavation and off-site disposal of contaminated soil. Excavated areas were backfilled with clean soil and covered with vegetation.

Disclaimer: EPA does not warrant that the property is suitable for any particular use. Prospective purchasers must contact the property owner for sale potential.

- A Declaration of Environmental Restrictions restricts excavation beyond a depth of five feet on the site.
- In 2000, EPA deleted the site from the National Priorities List.
- EPA determined the site had achieved the Sitewide Ready for Anticipated Use performance measure in June 2006. More information on the Sitewide Ready for Anticipated Use performance measure can be found here: epa.gov/superfund-redevelopment-initiative/performance-measures-superfund-sites#SWRAU

FOR MORE INFORMATION, PLEASE CONTACT:

Jaelyn Kondrk Superfund Reuse Coordinator U.S. EPA Region 2 Phone: (212) 637-4317 Email: kondrk.jaelyn@epa.gov	Grisell Diaz-Cotto Remedial Project Manager U.S. EPA Region 2 Phone: (212) 637-4430 Email: diaz-cotto.grisell@epa.gov
---	---

Site Summary: <https://www.epa.gov/superfund/renora>