



Upper Columbia River Investigation Site Update

Region 10

November 2014

The U.S. Environmental Protection Agency is studying pollution in the Upper Columbia River from the U.S./Canada border to the Grand Coulee Dam including Lake Roosevelt. The Trail smelter, which is owned by Teck and located on the Columbia River approximately 10 miles north of the U.S./Canada border, historically discharged millions of tons of metals-laden slag and liquid wastes into the Columbia River. Metal particulates were released from the smelter smoke stack.

The study includes human use surveys and fish, river sediment, beach sediment, river water, and soil studies to determine where and how much people, plants and animals may be exposed to pollution. These and other studies are all part of the **Remedial Investigation/Feasibility Study**. The RI/FS includes the human health and the ecological risk assessments. All of the studies are being funded by Teck.

Superfund risk assessments determine if pollution at a site is likely to cause harm to people or the environment. **Human health risk assessments** estimate how much pollution people are exposed to from the site and what the potential for harm (risk) may be.

The **ecological risk assessment** evaluates the likelihood that harmful environmental effects may occur from pollution. Together, the risk assessments determine the potential need for cleanup.

Under Superfund, risks to people must be very low, otherwise cleanup alternatives are considered which will reduce the risks. EPA has worked with the National Park Service to survey where, how often, and how long people swim, camp, wade in the water, play on the beach or eat fish. EPA has also worked with the Confederated Tribes of the Colville Indian Reservation (CCT) to survey residents and determine how they use the river, the land, and its resources for food and other purposes. The Spokane Tribe of Indians has provided EPA with information representing traditional tribal practices.

The EPA also sampled soil at residential properties between Northport and the Canadian border. These soils may have been polluted by the Trail smelter or the former LeRoi smelter in Northport, WA. Our goal is to understand whether metals are present at levels of concern and what cleanup, if any, may be necessary to make sure residents and visitors are protected from pollution.

Completed Studies

Confederated Tribes of the Colville Reservation Tribal Use Survey (2012)

CCT and EPA designed a survey to learn how people on the Colville Reservation may be exposed to pollution through their use of plants, animals, soil, sediment, or water.

People were interviewed about subsistence or tribal cultural practices including hunting, fishing, gathering, and using other environmental resources from the Upper Columbia River site and surrounding area. Results of the survey will be used in the **human health risk assessment**.

Recreational Consumption and Resource Use Survey (2012)

The National Park Service in coordination with EPA, the State of Washington, the CCT, the Spokane Tribe of Indians, and Teck, collected information from visitors about their recreational use of the Upper Columbia River, as well as how much fish they ate.

The EPA will combine the survey results and other sampling data in a comprehensive **human health risk assessment** to estimate risks from eating fish or plants, or ingesting sediment on a beach.

Completed Studies

Fish Tissue Study (2009)

Teck, with EPA oversight, analyzed 16 species of fish from the site for metals, dioxins/furans, polychlorinated biphenyls (PCBs), polybrominated diphenyl ethers (PBDEs), organochlorine pesticides, polychlorinated aromatic hydrocarbons (PAHs), and semivolatile organic compounds (SVOCs).

The Washington Department of Health used these data to update their fish consumption advisory for Lake Roosevelt in 2012. To learn more about the Washington Department of Health's fish consumption advisory for the Upper Columbia River/Lake Roosevelt, visit the department's Web site at <http://go.usa.gov/7jRh>

Results from the fish tissue study will be used in both the **human health** and **ecological risk assessments**.



Fish size and species are recorded during the 2009 fish tissue sampling.

Surface Water Study (2009 and 2010)



A surface water sampling device is deployed during 2010 sampling.

Teck, with EPA oversight, tested water from the Upper Columbia River Site for metals, dioxins/furans, PCBs, PBDEs, organochlorine pesticides, PAHs, SVOCs, nutrients, and radionuclides.

Teck collected nearly 300 samples from the reservoir close to both banks and mid-channel, near the surface and at the bottom. Both undisturbed and disturbed (to mimic playing in the water) water samples were collected and tested.

Samples were collected during high pool with low flow, low pool with low flow, and rising flow with high flow to reflect reservoir conditions throughout the year.

All of the undisturbed water samples met EPA safe drinking water standards. Some of the disturbed water samples, which intentionally included suspended sediment, did not meet drinking water standards for aluminum, iron, lead, and manganese.

Even though most water samples meet drinking water standards, untreated river water is not safe to drink directly since it was not tested for harmful bacteria, viruses or parasites.

The results will be used in both the **human health** and **ecological risk assessments**.

Beach Study (2009 – 2011)

In 2009 through 2011, Teck, with EPA oversight, sampled 43 beaches along the Upper Columbia River for metal contamination.

From those assessments:

- ✓ Bossburg Flat Beach was closed in 2012 due to high lead levels, likely from a nearby mine, mill, and historic ferry landing and other potential sources. The Bossburg Flat Beach and associated uplands will be further sampled to determine the full extent and possible source of contamination.
- ✓ Evans Campground Beach initially had lead levels slightly above human health screening levels, but after reanalysis of the samples, it may be below screening levels. We will sample again next year to provide more data.
- ✓ The “Swimming Hole” Beach near Sheep Creek initially had arsenic levels slightly above human health screening levels, but re-analyses indicates it may be below screening levels.
- ✓ Beach sediment contaminated with slag was removed from Black Sand Beach in 2010. Teck, working with the Washington State Department of Ecology through a voluntary agreement outside of the RI/FS, removed about 9,100 tons of metals-contaminated sediment from the beach and brought in clean sand to rebuild it. For more information about Black Sand Beach visit http://1.usa.gov/black_sand



Results will be used in the **human health** and **ecological risk assessments**.

Ongoing Studies

Sediment Study

Teck, with EPA oversight, completed sediment sampling from Lake Roosevelt and the river in September and October of 2013.

- ✓ Sediment was collected from 136 locations. The samples were analyzed for metals.
- ✓ Sediment samples were collected from Canada (including upstream of Teck) all the way to Grand Coulee Dam.
- ✓ 69 of the sediment samples are undergoing bio-assay testing to determine whether the metals in the sediment are harmful to aquatic organisms.

Results from the sediment study should be available in spring 2015 and will be used in the **ecological risk assessment**.

Residential Soil Sampling

The EPA sampled the soil at residential properties in the Columbia River valley near the U.S./Canada border that may have elevated metals from smelter operations. Residents volunteered to have their property sampled. The sampling was conducted between August and October, 2014. Results are expected to be available in the spring of 2015, and will be used in the **human health risk assessment**.

Upland Soil Sampling

Teck, under EPA oversight, sampled soil between China Bend and the U.S./Canada border that may have been polluted from stack emissions, historic flooding, or windblown dust from polluted sediment. Results will be used in the **human health** and **ecological risk assessments**.

Ongoing Studies



The cap over the contamination is constructed at the Young America Mill site in October 2012.

Young America Mill

High levels of lead were discovered near Bossburg Flat during sampling for the Upper Columbia River RI/FS. The source of the lead contamination was tailings from the nearby Young America Mill, which processed lead ore from several nearby mines and ceased operation around 1953.

Lead contamination at this level presents a risk to people, especially young children. In the fall of 2012, EPA dismantled the mills used to process ore, dug up the contaminated soil, and buried the soil and debris on site under a protective cap.

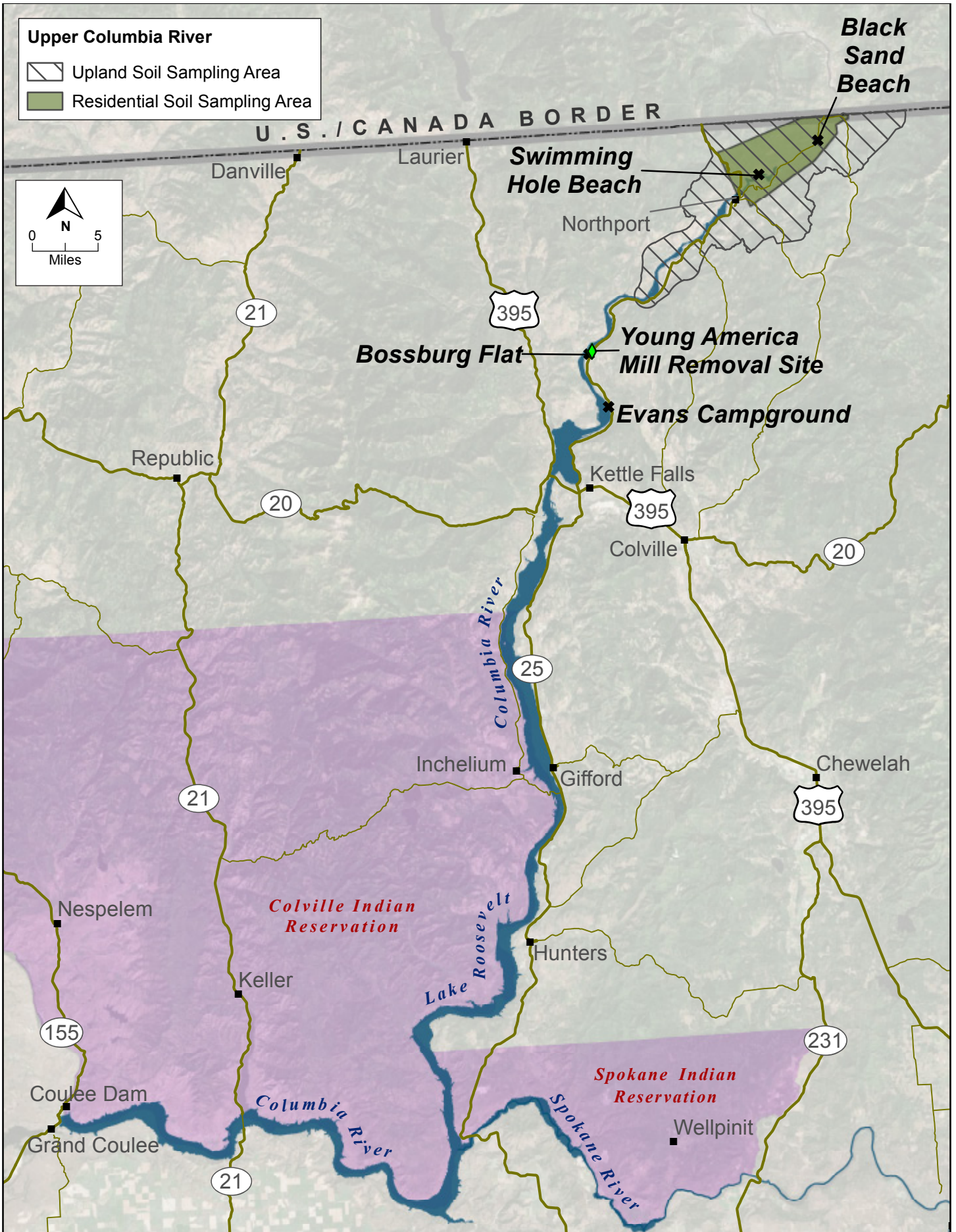
This cleanup was performed by the EPA, not Teck.

Bossburg Flat Soil and Sediment Sampling

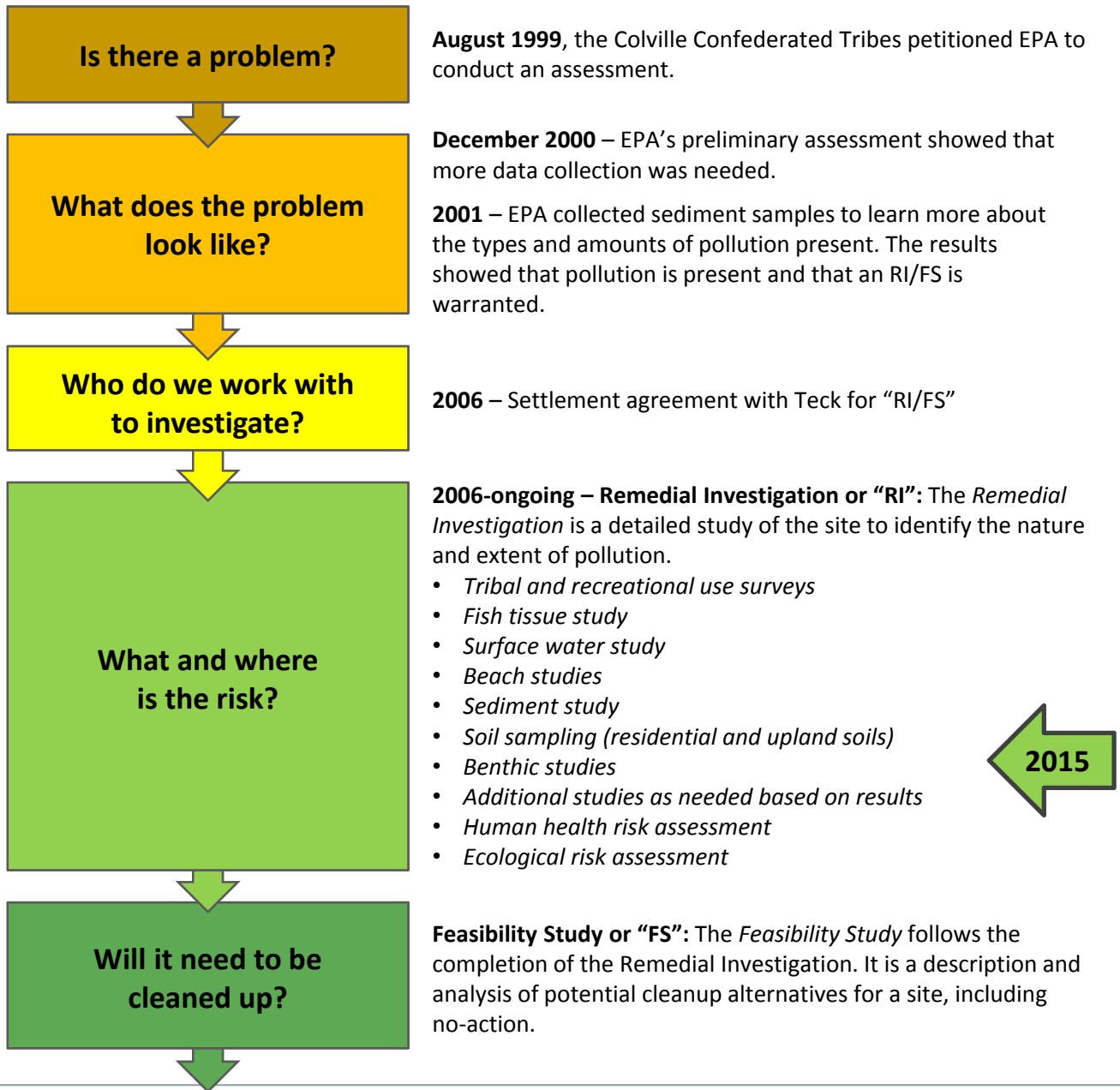
Additional sampling of both sediment and soil is planned to determine if the Young America Mill, Mine, and historic ferry landing is polluting the Bossburg Beach and Flat and downstream to Evans Campground Beach. We expect the sampling to be completed by the summer of 2015 by Teck under EPA oversight. Results will be used in the *human health* and *ecological risk assessments*.

Benthic Invertebrates (Mussels and Crayfish)

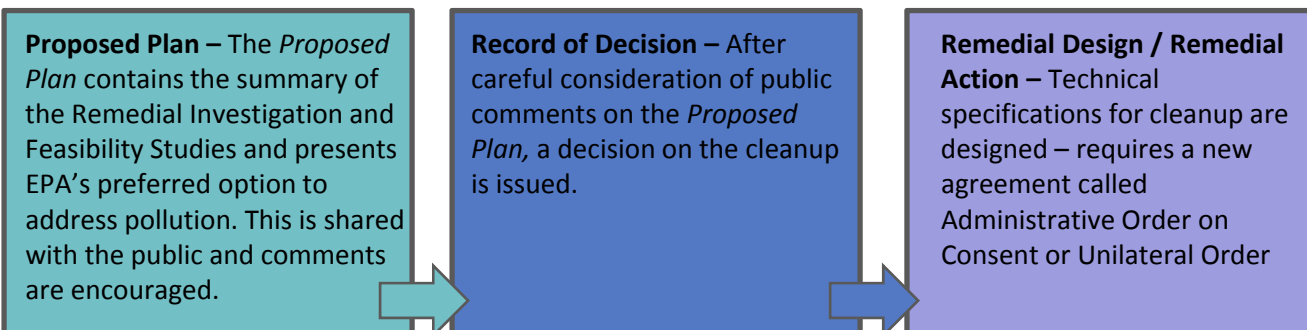
Teck is developing a plan to sample mussels and crayfish for pollution. Results will be used in the *human health* and *ecological risk assessments*.



EPA's Upper Columbia River Study "RI/FS" process



EPA's Superfund process for listed sites (after RI/FS)



For More Information

- Official records and other documents from the Upper Columbia River study are located at the EPA Regional Office in Seattle:
- **EPA Region 10 Superfund Records Center**
1200 Sixth Avenue, Suite 900, ECL-076, Seattle, WA 98101
- Please call 1-800-424-4372, ext. 4494 or 206-553-4494 to make an appointment.

Information Repositories

For your convenience, information about this project is also available at seven locations throughout the project area. Each location has the same information, including full copies of draft and final technical documents, fact sheets, and other information about the site. Before you visit a location, please call ahead for business hours:

- **Northport:** Northport Town Hall, 315 Summit St., (509) 732-4450
- **Colville:** Colville Public Library, 195 S. Oak Street, (509) 684-6620
- **Inchelium:** Inchelium Tribal Resource Center, 12 Community Loop, (509) 634-2791
- **Nespelem:** Office of Environmental Trust, Bldg. #2, Colville Confederated Tribes, 1 Colville (509) 634-2413
- **Grand Coulee:** Grand Coulee Library, 225 Federal Street (509) 633-0972
- **Wellpinit:** Spokane Tribe Department of Natural Resources, 6290 B Ford-Wellpinit Road (509) 258-7709 ext. 13
- **Spokane:** Spokane Library, 906 W. Main (509) 444-5336

Technical documents and additional information about the study can be found online at <http://yosemite.epa.gov/R10/cleanup.nsf/sites/upperc>


- **Citizens for a Clean Columbia:** <http://cleancolumbia.org>
- **Teck's project site:** www.ucr-rifs.com
- **Lake Roosevelt Forum:** www.lrf.org

To sign up for **emails** about the Upper Columbia River study, please contact **Kay Morrison**, Community Involvement Coordinator morrison.kay@epa.gov or call 1-800-424-4372 ext. 8321 or 206-553-8321.

Contacts

Following are other contacts for this project:

- ✓ **Laura Buelow**,
Upper Columbia River Project Manager
buelow.laura@epa.gov
509 376-5466 or 1-800-424-4372 ext. 65466.
- ✓ **Matt Wilkening**
Upper Columbia River Project Manager
wilkening.matt@epa.gov
208 378-5760 or 1-800-424-4372 ext. 85760.

 TDD or TTY users, please call 1-800-877-8339 and give the operator Kay Morrison's phone number.



Upper Columbia River Investigation Site Update

Look Inside for :

Completed Study Results –

***Tribal Use • Recreational Consumption •
Fish Tissue • Surface Water • Beaches***

Ongoing Studies –

***Sediment • Residential Soil Sampling •
Upland Soil Sampling • Young America Mill •
Bossburg Flat Soil and Sediment Sampling
Mussels and Crayfish • More Information***

