



Region 10



**Willamette Cove**  
**Portland Harbor Superfund Site**

**March 2020**

The U.S. Environmental Protection Agency (EPA) and the Willamette Cove In-water Remedial Design Group (City of Portland, State of Oregon through its Department of State Lands, and Port of Portland) prepared this fact sheet to provide community members with updated information concerning the Willamette Cove in-water project area, which is part of the Portland Harbor Superfund Site. EPA issued the Record of Decision (ROD) for the Portland Harbor Superfund Site in January 2017. The ROD selects the environmental cleanup to address contamination in the Willamette River and identified the Willamette Cove project area as requiring cleanup.

## **What is the history of Willamette Cove?**

Willamette Cove is located between the St. John's and Railroad bridges on the east side of the river between approximately river miles 6 and 7. From the 1900s to 1970s the site was used extensively for heavy industrial activity, including a lumber mill, barrel construction, and dry dock activities with significant over-water activity. The in-water project area is approximately 47 acres. Cleanup is needed in the cove as well as the adjacent upland portion. While the in-water and upland (land along the river) cleanups are considered separate project areas, performing parties are coordinating their respective efforts.

## **What is the work that has been completed to-date?**

The City of Portland, State of Oregon, Port of Portland, and Federal potentially responsible parties (PRPs)<sup>1</sup> signed an agreement with EPA in December of 2019 to design the in-water cleanup at Willamette Cove.

Under a separate agreement with oversight from the Oregon Department of Environmental Quality, the Port of Portland, and Metro are conducting the upland cleanup.



*1970 Aerial Photo of Willamette Cove (Source: DEQ)*

<sup>1</sup> Federal PRPs include United States Maritime Administration; the United States Coast Guard; the United States General Services Administration; the United States Bonneville Power Administration; the United States Department of Treasury; and the United States Department of Defense with respect to the Department of Navy and the Army Corps of Engineers

## What are the planned activities for this project area?

The Willamette Cove In-water Remedial Design Group has begun the preliminary planning to design the remedy at this project area. During this phase, engineers will determine how they will implement EPA's final cleanup plan (the ROD). Factors considered during remedy design include, but are not limited to:

- Sampling to inform the capping and dredging design of the project area
- Determining which ROD-prescribed institutional controls (such as restrictions of river or land use) will be used to protect human health, wildlife, the environment, and the remedy in this project area
- Timing and sequencing of cleanup activities

The Willamette Cove In-water Remedial Design Group will also:

- Assess upland and in-water sources of contaminants to determine whether they are sufficiently controlled ("Sufficiency Assessment")
- Conduct field investigations to provide preliminary engineering information and address any data gaps ("Pre-Design Investigation")

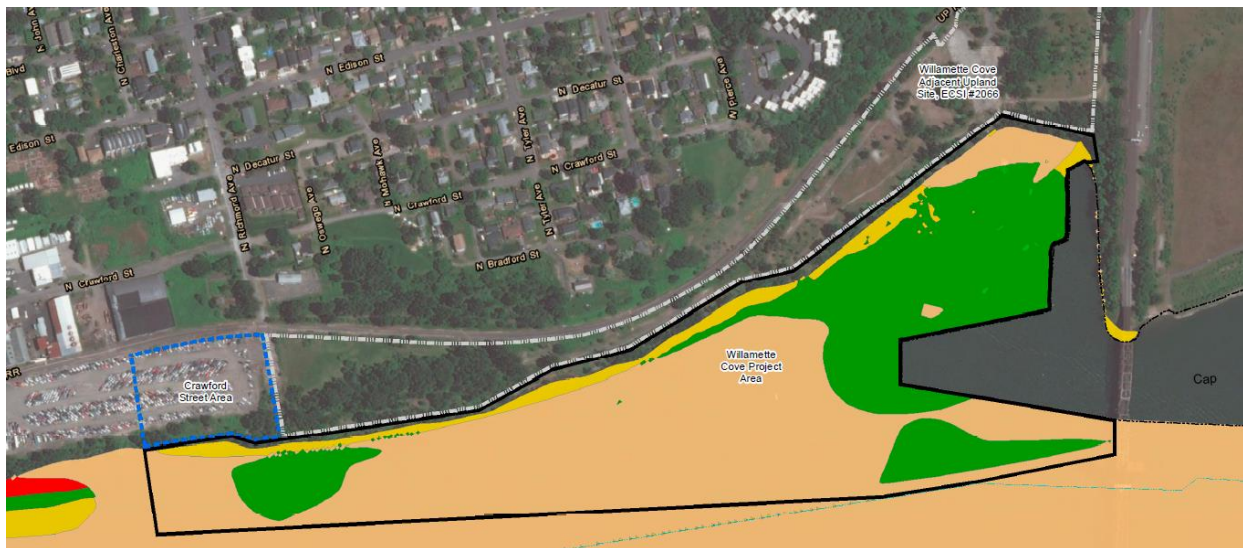



Figure 1. Willamette Cove Project Area

## Questions or Need More Information?

- **Laura Knudsen**, EPA Community Involvement Coordinator • 206-553-1838 • [knudsen.laura@epa.gov](mailto:knudsen.laura@epa.gov)
- **Eva DeMaria**, EPA Remedial Project Manager • 206-553-1970 • [demaria.eva@epa.gov](mailto:demaria.eva@epa.gov)
- **Jessica Terlikowski**, Willamette Cove Involvement Coordinator, Willamette Cove In-water Remedial Design Group • 503-823-5507 • [jessica.terlikowski@portlandoregon.gov](mailto:jessica.terlikowski@portlandoregon.gov)
- **Visit EPA's Portland Harbor Superfund Website:** [www.epa.gov/superfund/portland-harbor](http://www.epa.gov/superfund/portland-harbor)

If you need materials in an alternative format, please contact Laura Knudsen at 800-424-4372, ext. 1838.  TDD or TTY users, please call 800-877-8339 and give the operator Laura's phone number.