

River Mile 11 East Project



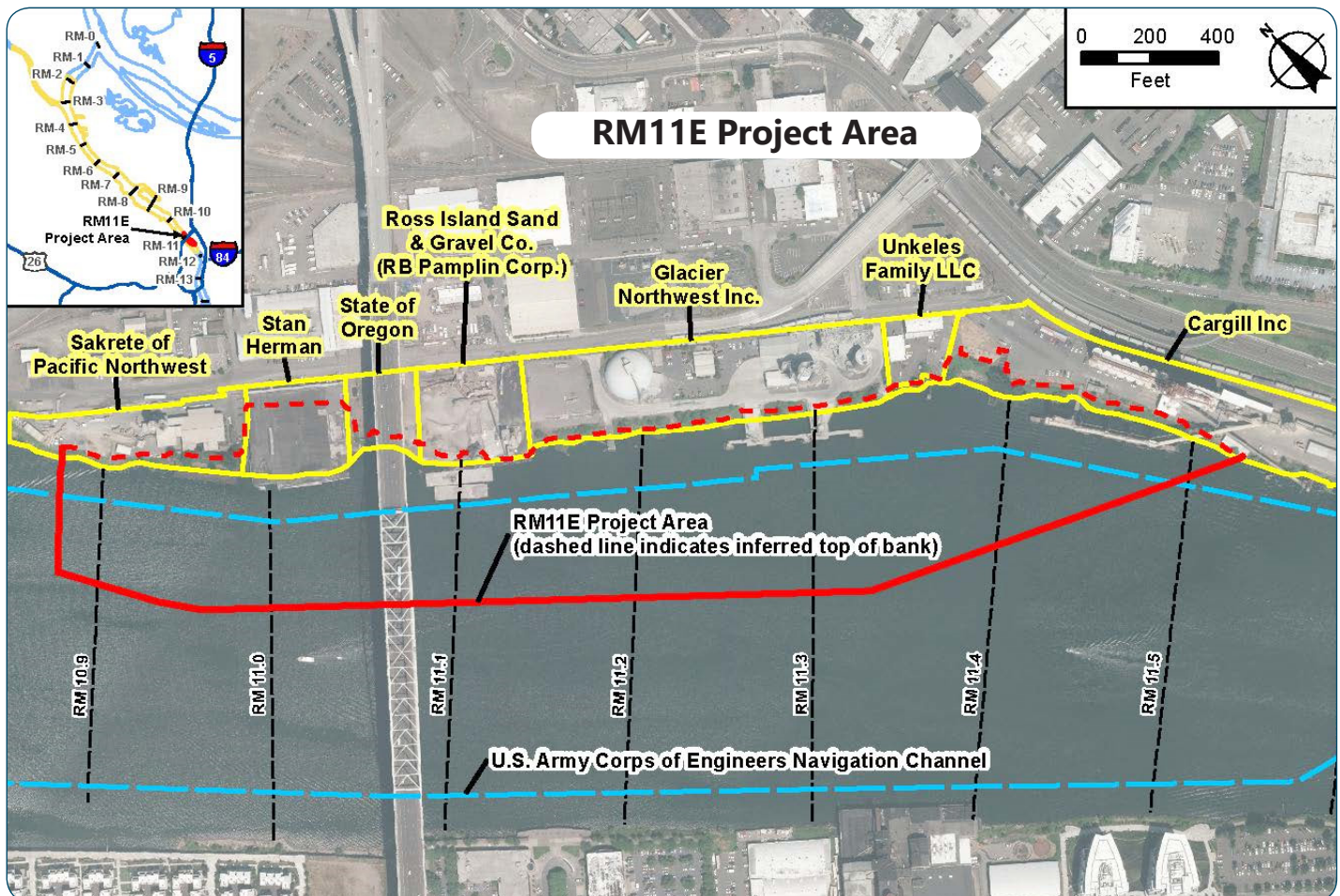
Portland Harbor Superfund Site

March 2020

The U.S. Environmental Protection Agency (EPA) and the River Mile 11 East (RM11E) Group have prepared this fact sheet to provide community members with updated information concerning the RM11E project area which is part of the Portland Harbor Superfund Site (see figure below). The site-wide Portland Harbor Remedial Investigation indicates that there is potential for long-term health risks from eating fish at the Site, including fish taken from the RM11E project area. EPA issued the Record of Decision (ROD) for the Portland Harbor in January 2017. The ROD requires cleanup in the RM11E area.

Project Area Description

The RM11E project area is located along the east bank of the Willamette River between approximately RM 10.9 and RM 11.6, just south of the Fremont Bridge, and includes approximately 38 acres of river bottom and shoreline. RM11E is within the historic Albina area, which has hosted a wide variety of industrial facilities and overwater operations, in addition to many ongoing industrial and marine operations, for more than 100 years. The Willamette River in this area has been redirected, straightened, filled, and deepened during the last century to make it usable for navigation and commercial shipping. Artificial fill has been added to much of the project area over the years.



Source: RM11E Group

River Mile 11E Group

The River Mile 11E Group is a small group of parties who either have in the past or currently own property and/or have business operations in the vicinity of the RM11E project area. These six parties have entered into an agreement with EPA and its partners to perform additional work that advances the cleanup.

Members of the RM11E Group include:

- Cargill, Inc.
- ViacomCBS Inc.
- City of Portland
- DIL Trust
- Glacier Northwest, Inc.
- PacifiCorp

An Administrative Settlement Agreement and Order on Consent (ASOC) between EPA and the RM11E Group was finalized on April 15, 2013. The AOC required the RM11E Group to pay for and conduct investigation activities specific to RM11E that supplemented the larger Portland Harbor Remedial Investigation/Feasibility Study. The additional work performed at RM11E over the past several years allows design and construction of the final remedy for the RM11E project area to begin more quickly than at other areas within the Portland Harbor Superfund Site. An AOC Amendment was signed with EPA in January 2018, in which the group committed to perform the engineering studies and do the work needed to design the full remedy for the RM11E project area.

Information regarding work performed at the Portland Harbor Superfund Site, including RM11E, is available at EPA's website: www.epa.gov/superfund/portland-harbor

River Mile 11E Work Completed to Date

The RM11E Group has completed and continues to work on a number of significant studies and milestones that are important to move the engineering design of the cleanup plan forward. These include:

- Work Plan and Data Review, [Field Sampling and Data Report/Porewater Report](#) (2013 - 2015)
- [Implementability Study](#) (approved by EPA 2015)
- [Recontamination Assessment](#) (approved by EPA 2018)
- [Basis of Design Report Work Plan](#) (approved by EPA 2018)
- [Basis of Design Report](#) (approved by EPA 2019)
- Pre-Design Investigation Sampling Plan for the RM 11E area (in progress)
- Remedial Design Work Plan (in progress)

Cindy Ryals

503-823-5830



cindy.ryals@portlandoregon.gov

Laura Knudsen

206-553-1838

knudsen.laura@epa.gov

If you need materials in an alternative format, please contact Laura Knudsen at 800-424-4372, ext. 1838

TTY users: please call the Federal Relay Service: 800-877-8339 and ask for Laura Knudsen