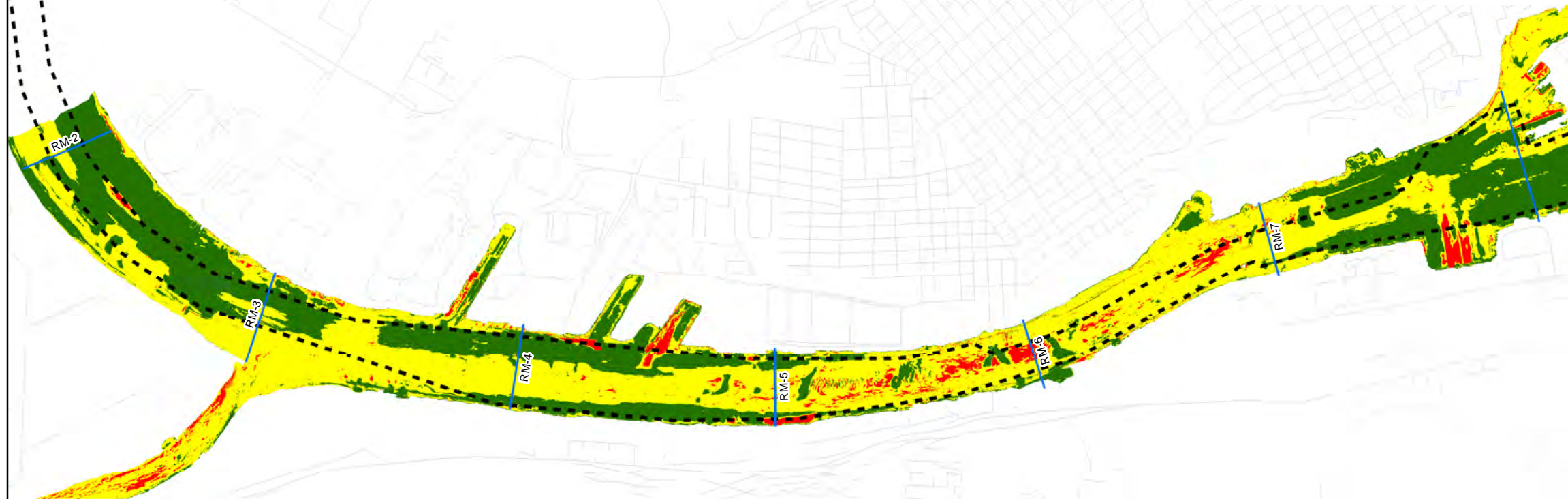


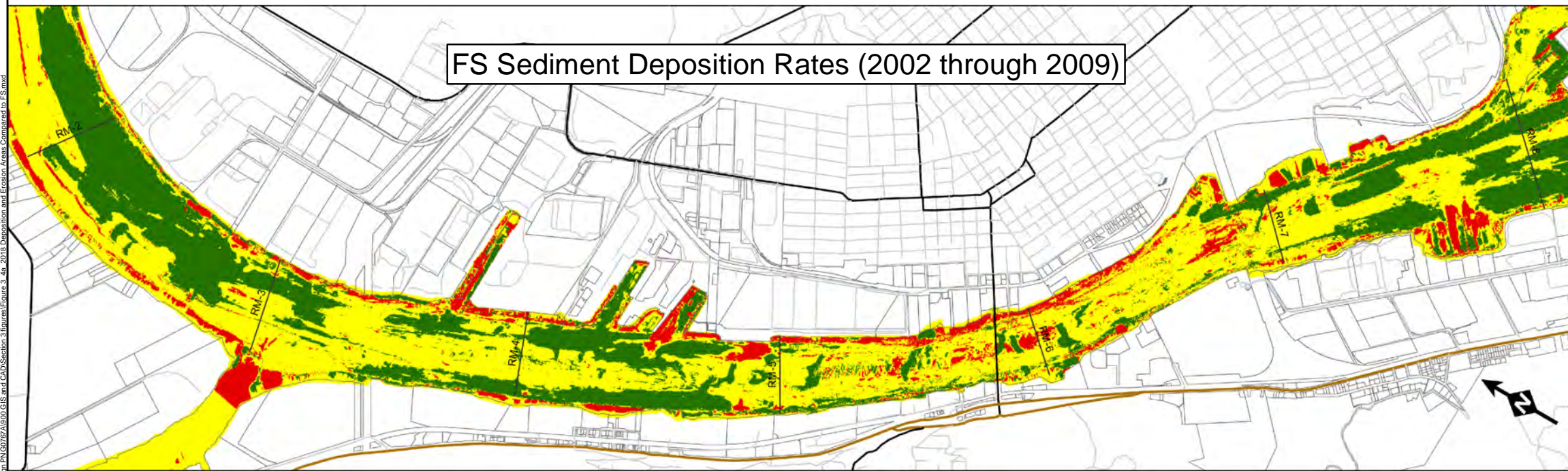
PDI Sediment Deposition Rates (2009 through 2018)

**WORKING DRAFT**

This document is currently under review by US EPA and its federal, state, and tribal partners, and is subject to change in whole or in part



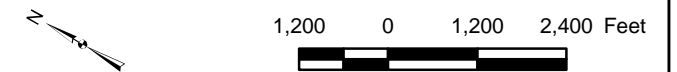
FS Sediment Deposition Rates (2002 through 2009)



**Legend**

- Erosional: -2.5 cm/yr or more
- Neutral: -2.5 to 2.5 cm/yr
- Depositional: 2.5 cm/yr or less
- Navigation Channel
- River Mile Marker

Note:  
1. FS Sediment Deposition Rates for 2002 to 2009, taken from FS Figure 3.4-20



**2018 Deposition and Erosion Areas Compared to FS  
RM 1.9 to 8.0**

Portland Harbor Superfund Site  
Pre-Remedial Design Footprint Report



MI/SEA

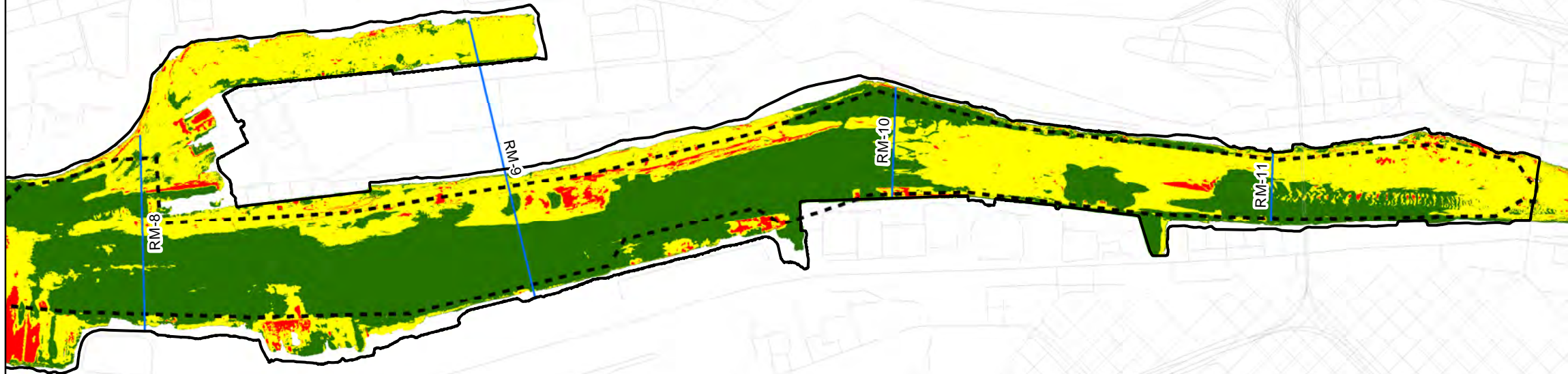
January 7, 2019

Figure

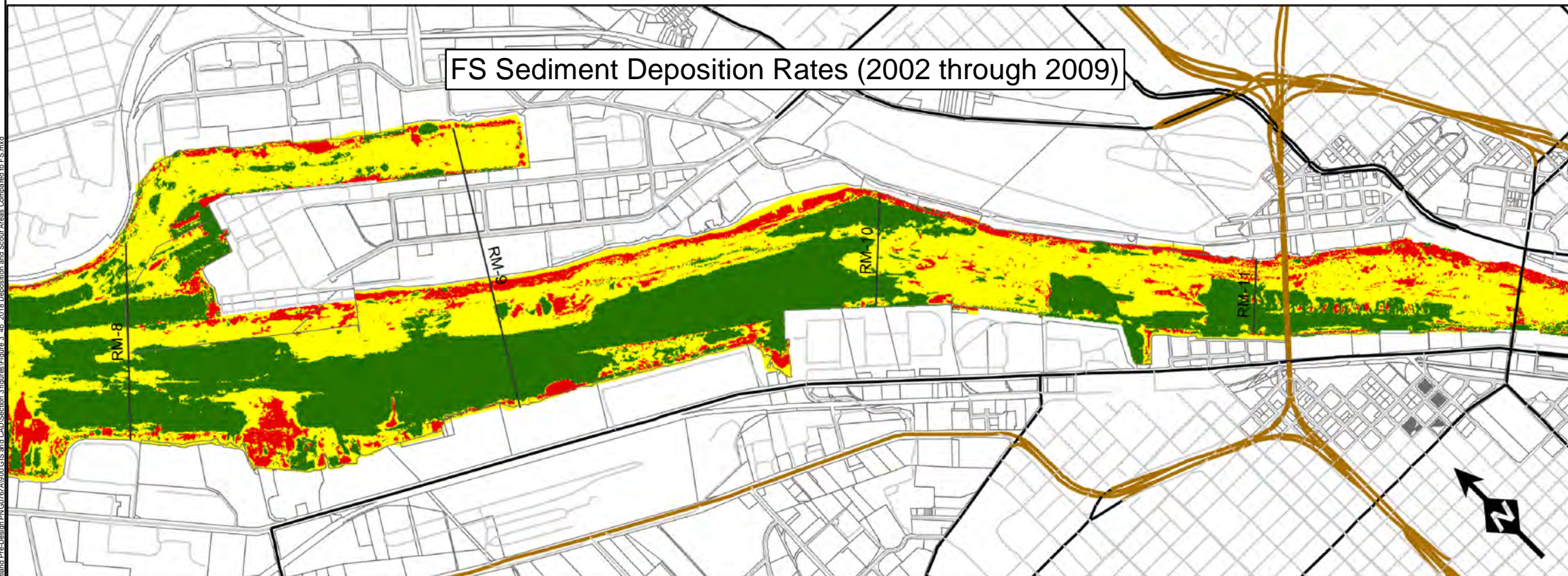
**3.4a**

Path: P:\Projects\Portland\_Pre-Design\FIGURES\2018 GIS and CAD\Section 3\Images\Error 3\_4a\_2018 Deposition and Erosion Areas Compared to FS.mxd

PDI Sediment Deposition Rates (2009 through 2018)



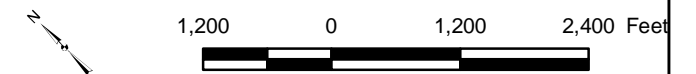
FS Sediment Deposition Rates (2002 through 2009)



Legend

- Erosional: -2.5 cm/yr or more
- Neutral: -2.5 to 2.5 cm/yr
- Depositional: 2.5 cm/yr or less
- - - Navigation Channel
- River Mile Marker

Note:  
1. FS sediment Deposition Rates for 2002 to 2009, taken from FS Figure 3.4-20



2018 Deposition and Erosion Areas Compared to FS  
RM 8.0 to 11.8

Portland Harbor Superfund Site  
Pre-Remedial Design Footprint Report



Figure  
3.4b

MI/SEA

January 7, 2019

Path: P:\Projects\Portland Pre-Remedial Design\AUG2018\GIS and CAD\Station 3\Insects\Figure 3.4b - 2018 Deposition and Erosion Areas Compared to FS.mxd