

BASIN BULLETIN



Updates on the Coeur d'Alene River Basin Cleanup

November 2018

2018: Another Big Year for the Cleanup

Another busy and productive year is wrapping up at the Coeur d'Alene Basin Cleanup Project. It's time to take stock of the important work that's been accomplished to protect people's health and the environment. A big thank you to our many partners – the Idaho Department of Environmental Quality, Panhandle Health District, the Coeur d'Alene and Spokane Tribes, the Basin Environmental Improvement Project Commission, local governments, other state and federal agencies, and many more. You share our successes. Most of all we want to thank the local community. Some of the cleanup work has been disruptive. We appreciate your patience and cooperation. In 2018, over \$27 million was spent on the cleanup. Cleanup activities employed over 300 people, many living in the Silver Valley. Note that the total number of people employed on the cleanup includes specialty services and seasonal workers not employed full-time or year-round.

Major work completed this year includes:

- Cleaning up over 50 residential and commercial properties, to reduce people's exposure to lead and other metals.
- Winding down the Paved Roads Program. To date, around 500 road segments have been paved in local communities! The new pavement serves as a barrier to underlying mine waste.
- Removing over 52,000 cubic yards of mine waste from the Success site in Ninemile Creek to reduce the amount of metals going into surface water.
- Constructing 3 remedy protection projects totaling about \$1.5 million. This work protects past cleanup from the impacts of flooding in community areas.
- Making major progress on the Bunker Hill Central Treatment Plant and groundwater collection system upgrades project. The groundwater containment wall is 90 percent complete.
- Hauling about 10,400 truckloads of contaminated waste to repositories, from cleanup projects and Institutional Controls Program activities.
- Hauling about 8,200 truckloads of waste to Limited Use Repositories, from the Paved Roads Program.

Highlights

- 2018: Another Big Year for the Cleanup 1
- Summer Blood Lead Screening 2
- soilSHOP Helps Raise Local Awareness About Lead in Soil 2
- A Busy Year for Basin Properties Cleanup ... 4
- Paved Roads Program Nearly Complete 6
- Central Treatment Plant Upgrades and Groundwater Collection System Project 7
- ***And Much More!***

Thank You for Participating in Summer Blood Lead Screening



Panhandle Health District would like to thank everyone who participated in this year's annual blood lead screening. PHD screened 231 children between the ages of 6 months to 6 years, and 89 individuals over 6 years of age. This is an increase in participation in both age groups from 2017. In 2017, 254 individuals were screened. 320 individuals were screened in 2018. A more detailed report will be made available once all data has been evaluated. A special thanks to our partner Shoshone Medical Center and their staff! PHD offers blood lead screening year-round and follow-up services to any individuals living within the Bunker Hill Superfund Site. For questions or additional services please contact PHD at 208-783-0707.

soilSHOP Helps Raise Local Awareness About Lead in Soil

In September, the Silver Valley Community Resource Center and community members partnered with agencies to provide a soilSHOP. The soilSHOP took place at the Shoshone Medical Center's Kids Health and Safety Fair, in Smelterville. Its purpose was to help people learn if their soil contained lead or other metals, how to reduce exposures to contaminated soil, and how to garden safely. The name soilSHOP stands for Soil Screening, Health, Outreach, and Partnership. Community members were encouraged to collect up to three samples of soil from their homes or neighborhoods, and bring them to the event to be screened (measured) for lead and other metals.



According to Rhonda Kaetzel, from the Agency for Toxic Substances and Disease Registry (ATSDR), "Partnering with a community group opened up efforts to bring a service to residents. We screened soil but also talked with over 300 young children and parents about awareness of lead in the valley, its hazards, and preventing exposure. According to Centers for Disease Control and Prevention, there is no safe level of lead for children. Preventing exposures is key."

To screen soil, partners from the Panhandle Health District, Idaho Department of Environmental Quality, and their contractor used a testing method called x-ray fluorescence (XRF) to measure metals in 22 samples.

Continued ➡

⇒ Continued

soilSHOP Helps Raise Local Awareness About Lead in Soil

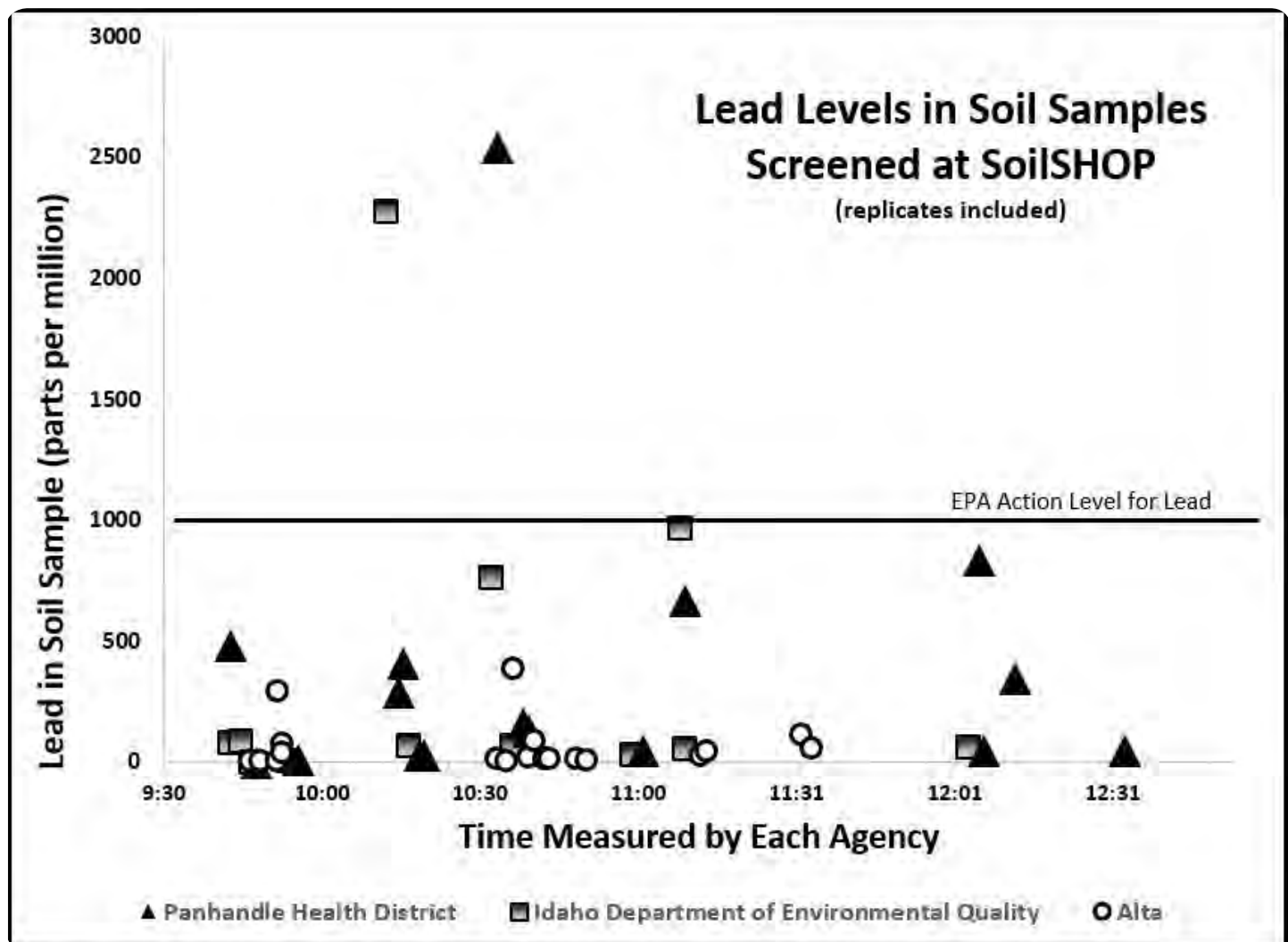
Results were given back to residents immediately. Of these samples, two had lead concentrations over EPA's cleanup action limits and ranged from non-detect to 2,539 parts per million (ppm) (see figure below). Arsenic in samples ranged from non-detect to 89 ppm. Only three samples had detectable amounts of cadmium and ranged from non-detect to 18 ppm. Samples were collected from a variety of locations, including yards, gardens, streets, and riverbanks.

Staff from Idaho Department of Health and Welfare and community volunteers explained the results and how to reduce and avoid exposures. Key messages included the following actions: washing hands and toys; not bringing soil into the house on shoes, pets, or dirty clothing; amending garden soil; and washing fruits or vegetables.

All SoilSHOP participants were encouraged to sign up for follow-up contact if their samples had elevated concentrations of either lead or arsenic. If you would like to know if soil in your yard has been remediated or sampled for metals, please contact Panhandle Health District at 208-783-0707.

CONTACT: **Barbara Miller**, Silver Valley Community Resource Center • 208-784-8891

Rhonda Kaetzel, ATSDR • 206-553-0530 • 800-424-4372 ext. 0530 • rkaetzel@cdc.gov



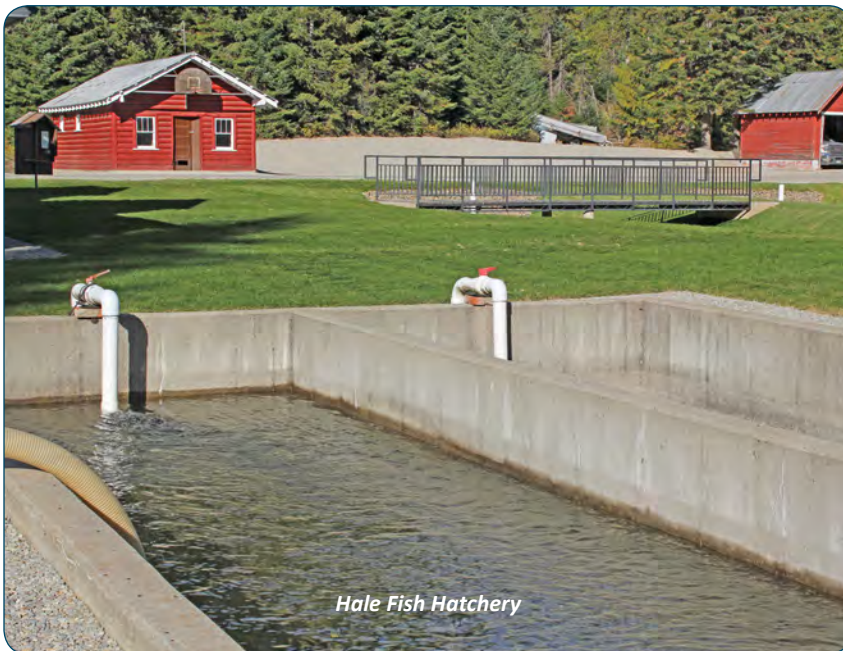
Bunker Hill Superfund Redevelopment Case Study Available

Earlier this year, EPA released its initial list of Superfund National Priorities List sites with the greatest expected redevelopment and commercial potential. The Bunker Hill Superfund Site, also called the Coeur d'Alene Basin Cleanup Project, was included. A redevelopment case study, "Reuse and Benefit to Community: Bunker Hill Mining and Metallurgical Complex Superfund site," has been released. The study gives details on successful commercial and recreational reuse projects: Silver Mountain Resort, the Trail of the Coeur d'Alenes, Galena Ridge Golf Course, and more. The community assets created around the cleanup site show how the local economy can grow and thrive while active cleanup construction is ongoing. Find the case study online: <https://go.usa.gov/xPUa7>

CONTACT: Kira Lynch, EPA, 206-553-2144 • 800-424-4372 ext. 2144 • lynch.kira@epa.gov



2018 Construction Season Accomplishments- A Busy Year for Basin Properties Cleanup



2018 was another great year for the Coeur d'Alene Work Trust's Basin Property Remediation Program cleanups. The Trust runs the program under EPA oversight. About 50 residential and commercial properties and rights-of-way were cleaned up this year, representing 20.6 acres. About 1,200 samples were collected from 50 properties in 2018. The Trust also tested 8 drinking water taps serviced by private wells. Seven filtration systems are continuing to be maintained for contaminated private drinking water sources in the Basin. Property cleanups and drinking water filtration systems protect people's health by reducing exposure to lead and other harmful metals.

This summer, the Trust completed a cleanup at the Hale Fish Hatchery in Mullan. The hatchery is owned and operated by the Shoshone County Sportsman Association, along with Idaho Fish and Game. Crews removed one foot of contaminated material and replaced it with a foot of clean backfill. At the owner's expense and with assistance from the Trust, the old pipes and valves that feed the ponds were replaced with new ones. The hatchery supplies trout to local lakes and ponds.

To date, over 7,000 properties have already been cleaned up across the Box and Basin. If you believe your property may be eligible and you'd like to have it sampled for mining-related metals, please contact:

IDEQ • 208-783-5781, or Alan Davis, Coeur d'Alene Work Trust • 208-783-0222.

Basin House Dust Sampling Update



House dust can contain lead. It can come from contaminated soils carried in from outside, or from deterioration of lead-based paint in pre-1978 homes, before such paint was banned. This summer, representatives from the Coeur d'Alene Work Trust tested 172 homes, mostly in the Lower Basin, for lead-contaminated dust. A carpeted mat was left inside homes for about one month, then collected for analysis. Samplers also collected dust samples from 116 indoor residential vacuum cleaners. They asked

residents some questions, including questions about recreational activities and hobbies, the age of the home, and renovations. Property owners will be mailed sample results in late December or early January. The local Panhandle Health District offers consultations about healthy living; call 208-783-0707.

CONTACT: **Anne McCauley**, EPA • 206-553-4689 • 800-424-4372, ext. 4689 • mccauley.anne@epa.gov

Success Mine Cleanup Will Protect People, Environment Downstream

In October 2018, cleanup activities at the Success Mine site were completed for the year. The Success Mine is located in the East Fork of Ninemile Creek, in the Upper Basin. In 2018, the Coeur d'Alene Work Trust removed 52,243 cubic yards of mine waste from the Success site and placed it in the Ninemile Creek Waste Consolidation Area. A total of 322,553 cubic yards have now been removed.

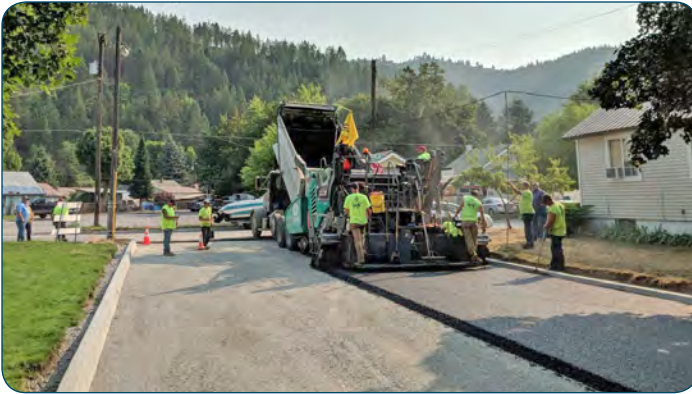
Next year's work will focus on finishing the removal of waste within the stream channel and re-establishing the natural stream corridor in this area. This includes re-routing the road through the site, so the two existing bridges can be taken down. The Success site was the single largest loader of lead and other metals to Ninemile Creek. We expect that eliminating this source will significantly

improve water quality and help protect the local ecology and people downstream. The project started in 2016. The Trust anticipates it will take about one more year to complete.

CONTACT: **Tamara Langton**, EPA • 206-553-2709 • 800-424-4372 ext. 2709 • langton.tamara@epa.gov



Paved Roads Program Nearly Complete



The Paved Roads Program is winding down in the Silver Valley! Around 500 road segments have been completed throughout the valley to date. Paving road surfaces serves as a barrier to heavy metals contamination and protects cleaned-up properties from re-contamination. Wallace, Pinehurst, and Osburn completed their individual programs this season, joining the East Side Highway District, Wardner, Mullan, and Smelterville. Kellogg and Shoshone County still have some road segments to complete and will continue work next season. The communities have

done a great job of coordinating utility work with the road paving, so that repaving was greatly minimized. The local jurisdictions are responsible for maintaining the remediated road segments going into the future.

CONTACT: **Craig Cameron**, EPA • 509-376-8665 • cameron.craig@epa.gov

Two Limited Use Repositories Closed and Ready for Use



Both the East Zanetti Yard and Shoshone County Solid Waste Transfer Station Limited Use Repositories were filled and closed, and a total of 8.6 acres capped with a clean gravel barrier this year. Shoshone County has plans to use the area that was capped as storage for its vehicles, and as a drop area for wood waste delivered to the Shoshone County Solid Waste Transfer Station. The county is currently parking its equipment on the gravel cap, to free up more room at the shop area within the transfer station. Limited Use Repositories accept waste only from replacement of local paved roads under the Coeur d'Alene Basin Cleanup. These locations are engineered to securely hold contaminated materials, reducing impacts to people and the environment. As LURs are closed, they provide new level ground to support redevelopment. The East Osburn LUR is already closed and capped, and is available for redevelopment or use by the property owner.

Waste Repositories Secure Tons of Contaminated Material

During the 2018 construction season, hundreds of trucks hauled contaminated soil and other waste materials to Lower Burke Canyon Repository, East Mission Flats Repository, Big Creek Repository, and Page Repository. The waste came from several sources: Institutional Controls Program projects, property cleanups, remedy protection projects, Central Treatment Plant Upgrades project, Groundwater Collection System project, and mine and mill site cleanups. EPA, IDEQ, the Coeur d'Alene Work Trust, and Panhandle Health District remain committed to limiting impacts to the local community. We understand that repositories can have negative impacts on the neighborhoods around them, and we want to do what we can to address these impacts. Trucks hauling waste to repositories are required to comply with traffic rules, cover their loads, and follow designated routes, among other requirements.



CONTACT: **Jim Finlay**, CDA Trust • 208-783-0222 or

Dan McCracken, IDEQ • 208-783-5781 • dan.mccracken@deq.idaho.gov

Truckloads delivered to CDA Work Trust-operated repositories in 2018:

- East Mission Flats Repository – 4,100
- Big Creek Repository and Annex – 1,300
- Lower Burke Canyon Repository – 2,100
- Page Repository – 2,900
- Shoshone County Solid Waste Transfer Station LUR – 600 (filled to capacity in 2018)
- East Zanetti Yard LUR - 1,300 (filled to capacity in 2018)
- Government Gulch LUR – 6,300

Central Treatment Plant Upgrades and Groundwater Collection System Project Make Major Progress

Upgrades to the Bunker Hill Central Treatment Plant and Groundwater Collection System reached notable milestones in 2018. Treatment operations have shifted to a temporary system. Demolition of the acid injection basin, aeration basin, pump house, and polishing pond is complete at the Central Treatment Plant. At the Sludge Impoundment Area, a total of 21.5 acres of liner was installed. At the Central Impoundment Area next to I-90, the groundwater containment wall is 90 percent complete, with over 7,300 linear feet constructed!



Photo courtesy Army Corps of Engineers

The big excavators have been moved off the site. Crews will continue with capping and restoration around the wall into November, then begin installing the groundwater extraction wells. The final sections of the containment wall will be completed next summer, after the pipeline and extraction wells are installed. We expect the project will be finished by 2020. The Groundwater Collection System, along with the upgraded Central Treatment Plant, will improve water quality downstream by significantly reducing metals pollution going into the South Fork of the CDA River.

CONTACTS: **Ed Moreen**, EPA • 208-664-4588 • moreen.ed@epa.gov, or

Kim Prestbo, EPA • 206-553-0239 • 800-424-4372 ext. 0239 • prestbo.kim@epa.gov

Remedy Protection Projects Keep Cleaned-Up Areas Clean

Remedy protection projects help protect people and the environment by reducing erosion and recontamination from storm water runoff, tributary flooding, and heavy rain and snowfall. CONTACTS: **Anne McCauley**, EPA • 206-553-4689 • 800-424-4372 ext. 4689 • mccauley.anne@epa.gov, or **Terry Harwood**, Executive Director, Basin Environmental Improvement Project Commission • 208-783-2528 • terry.harwood@deq.idaho.gov



Tiger Creek Project Gets Started

An important remedy protection project is underway in the 8th and River Streets neighborhood of Mullan. The Tiger Creek project includes a new Tiger Creek inlet above Fir Street, as well as new storm drains, curbs, and street paving along 8th Street and River Streets. The portion of the project along River Street started in October of this year. About half the project will be completed in 2018. The rest will be completed in 2019.

Rosebud Creek Project Completed

Rosebud Creek flows next to the Leisure Acres mobile home park and through Gene Day Park in Osburn, ending at Gene Day Pond. The Rosebud Creek Remedy Protection Project was completed in September. The project included replacement of culverts and pedestrian bridges, installation of a concrete box culvert, and construction of a concrete block wall and soil berms.



Printer's Creek Project Completed

The Printer's Creek Remedy Protection Project is located on the south side of downtown Wallace, Idaho. The project was completed in September. Crews modified the existing inlet structure, and installed a weir, sediment pond, and trash rack just upstream of the intake structure, to limit the amount of debris that enters the pipe network.

Ninemile Fishing Pond Cleanup

This month, crews completed the first phase of a small cleanup at Ninemile Fishing Pond, up Ninemile Road. This work started this fall and will finish in Spring 2019. The cleanup includes digging up lead-contaminated soil down to one foot around areas of the pond, and replacing it with clean soil or gravel. The cleanup will make the pond area safer for families.

CONTACT: **Bonnie Arthur**, EPA
206-553-4072 • 800-424-4372 ext. 4072
arthur.bonnie@epa.gov



Restoration Partnership Selects Coeur d'Alene Basin Projects



Cougar Bay stream and wetland enhancement is one of the Restoration Partnership's planned projects. Photo courtesy Restoration Partnership.

The Restoration Partnership (Partnership) recently selected a suite of projects to pilot the implementation process for restoration under the Coeur d'Alene Basin Restoration Plan. The Partnership adopted the Plan in 2018 with the overall goal to recover the natural resources that were injured by releases of mine waste contamination, and compensate for lost human uses of those resources. The restoration work is separate from, but complementary to, cleanup activities in the Coeur d'Alene Basin led by the EPA. The newly-selected projects support the Plan's goals and include restoring wetlands and establishing native plants. The pilot process will ensure that the Partnership's administrative

process is ready and effective for the upcoming public project solicitation process planned for 2019.

The Restoration Partnership is comprised of representatives from the State of Idaho (Idaho Department of Fish and Game and Idaho Department of Environmental Quality), the Coeur d'Alene Tribe, the US Department of the Interior (Fish and Wildlife Service and Bureau of Land Management), and the US Department of Agriculture (Forest Service).

For more information on the Partnership, the Plan or the projects, please visit: restorationpartnership.org.

CONTACT: **Phillip Cerner** • 208-660-8144 • philc@cdatribe-nsn.gov

Buying and Selling Property in the Bunker Hill Superfund Site

Are you getting ready to buy or sell property in the Silver Valley? When purchasing property, owners and buyers both have responsibilities in disclosing property issues and performing due diligence. Sellers are required by federal and state law to disclose any known issues with the property. This includes environmental contaminants on the property, property defects, and potential lead-based paint if the house was built before 1978. Most often, the property disclosure will be provided by the seller's agent to the buyers or their agent. Regarding environmental contaminants on the property, Panhandle Health District makes the process simpler within the Bunker Hill Superfund Site by providing an environmental disclosure to the property owner or their agent. You can do this through PHD's website at: <http://panhandlehealthdistrict.org/icp/icp-request-property-info>.

When buying a property through foreclosure, it is the buyer's responsibility to perform due diligence and make all appropriate inquiries. This includes everything mentioned above, and checking additional items like services to the property and a full title review. In Idaho, only public water systems regulated by the state are required to conduct water quality sampling. So, if you are buying a property on private services, remember to check the septic system records, available through the health district. Have a qualified analytical lab conduct water quality sampling.

CONTACT: **Andy Helkey**, PHD • 208-783-0707 • ahelkey@phd1.idaho.gov

New Mining Exhibit Debuts

Many thanks to our own Rene Gilbert for her considerable contributions to the new mining exhibit at the Idaho State Historical Museum in Boise. The exhibit debuted in September.

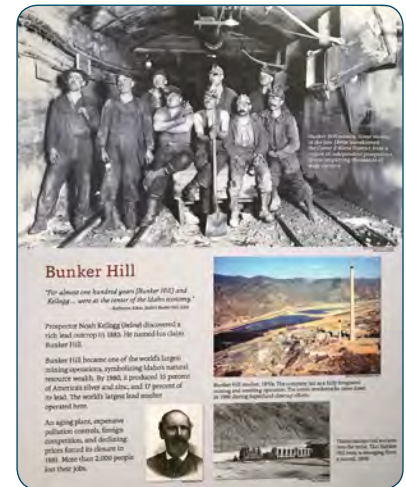
Basin Commission Tours Local Cleanup



Photo Courtesy Don McCracken, IDEQ

Many thanks to the Basin Environmental Improvement Project Commission for their August tour. It was a great opportunity for people to see local cleanup work first-hand.

The tour buses visited cleanups of historical mine and mill sites in the Upper Basin, the Central Treatment Plant and groundwater collection project, and remedy protection and paved roads projects. The Basin Commission typically offers a cleanup tour each August. The public is welcome. CONTACT: Terry Harwood, BEIPC Executive Director • 208-783-2528 terry.harwood@deq.idaho.gov



Out in the Community

Children's Health Fair Draws Big Crowds

A big thank you to everyone who visited the EPA/IDEQ/Panhandle Health District booth at the Shoshone Medical Center Kid's Health Fair in September. Over 600 people attended this year! Our booth included a doll house that showed how contaminated dirt can be brought into the home, a yard remediation display, handouts on property testing and healthy recreation, and more. We had the opportunity to answer people's questions in person. Thanks again for stopping by to learn about ways to reduce exposure to lead and other harmful metals, at home or while recreating outdoors.



North Idaho Fair Booth Shares Information on Cleanup



Hello to everyone who stopped by to visit us at the North Idaho Fair in August! The booth is a joint effort among PHD, EPA, DEQ, and the Basin Environmental Improvement Project Commission. Over 2,000 people typically stop by the booth each year. This year our team's exhibit was awarded the first prize: a blue ribbon. The fair provides many opportunities to engage with the public on the Coeur d'Alene Basin cleanup and recreating safely in the Basin. Thank you to everyone who helped make this another successful event!

Want Timely Updates? Visit us on Facebook!



One of the best ways to stay up-to-date on the cleanup work is to sign up for our Facebook page. Watch for two or three short posts a week. We invite you to check it out!

<https://www.facebook.com/CDAbasin>

Documents

North Idaho College Library

Molstead Library
1000 Garden Avenue – Coeur d'Alene, ID 83814
208-769-3355

Wallace Public Library

415 River Street – Wallace, ID 83873
208-752-4571

Spokane Public Library

906 West Main Avenue – Spokane, WA 99201
509-444-5336

EPA Field Office

1910 Northwest Boulevard, Suite 208
Coeur d'Alene, ID 83814
208-664-4588

EPA Seattle Office

Superfund Record Center
1200 Sixth Avenue – Seattle, WA 98101
206-553-4494 or 800-424-4372

St. Maries Library

822 W. College Avenue – St. Maries, ID 83861
208-245-3732

Kellogg Public Library

16 West Market Avenue – Kellogg, ID 83837
208-786-7231

Opportunities to Get Involved

Basin Environmental Improvement Project Commission (BEIPC)

EXECUTIVE DIRECTOR:

Terry Harwood

208-783-2528

<http://www.basincommission.com>

Citizens Coordinating Council (CCC)

CHAIR:

Jerry Boyd

509-220-1453

<http://www.basincommission.com/cc/>

The Basin Bulletin is published by the U.S. Environmental Protection Agency three times a year. The Basin Bulletin offers updates on the Superfund cleanup in the Coeur d'Alene Basin. For mailing list changes, to send comments on this newsletter, contact the editors, or submit articles for consideration, contact Debra Sherbina as noted. Mention of trade names, products, or services does not convey, and should not be interpreted as conveying, official EPA approval, endorsement, or recommendation.

Alternative formats are available.

For reasonable accommodation, please call

Debra Sherbina at 206-553-0247

TTY users, please call the Federal Relay Service at 800-877-8339



EPA Community Involvement Contact

Debra Sherbina

sherbina.debra@epa.gov 1-800-424-4372 ext. 0247



***Learn More About the
Coeur d'Alene Basin Cleanup
on the Web***

www.epa.gov/superfund/bunker-hill



Inside...

- Success Mine Cleanup
- Waste Repositories Secure Contaminated Material
- Remedy Protection Projects
- Buying and Selling Property in the Bunker Hill Superfund Site
- *Much More!*

