

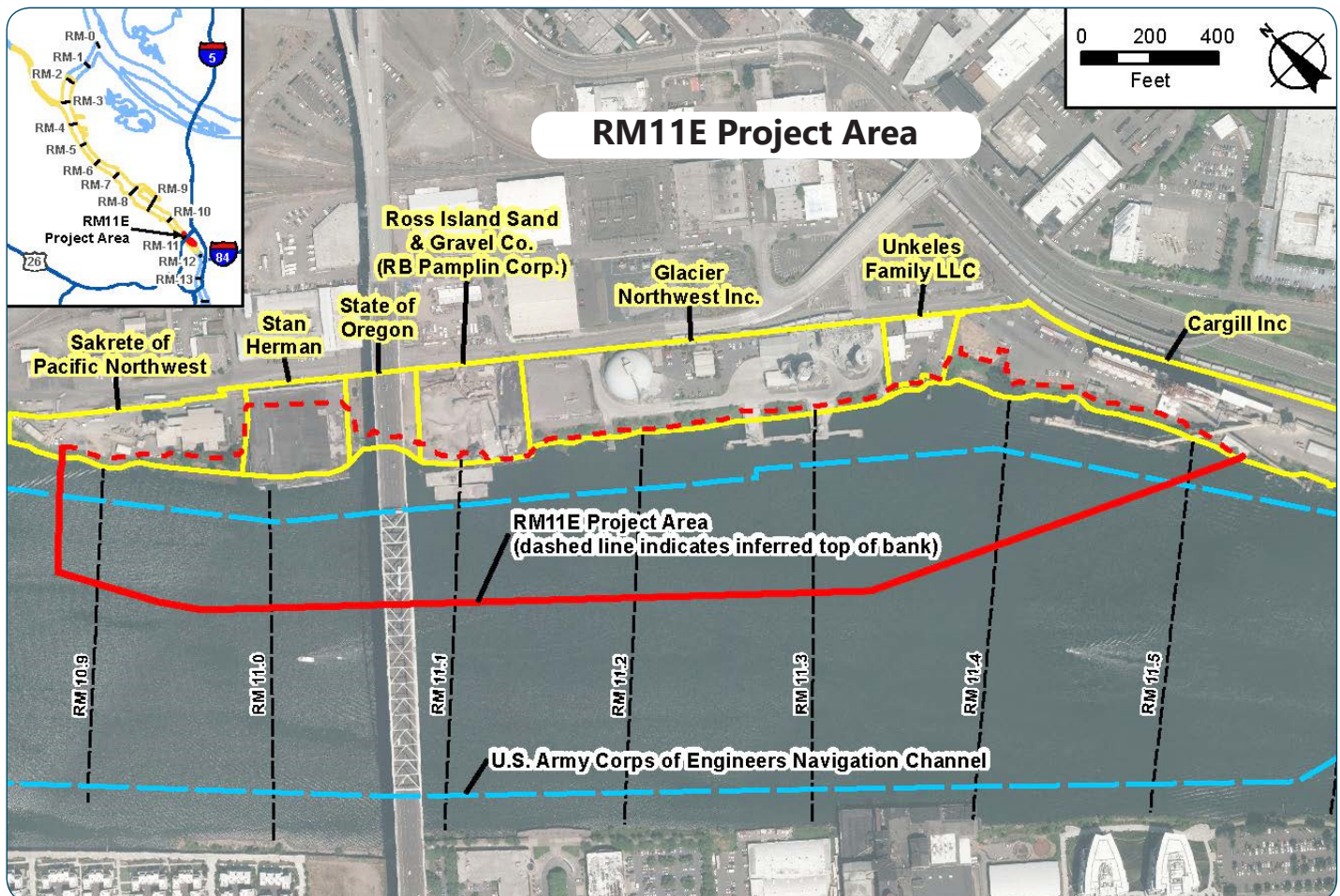
River Mile 11 East Project



The U.S. Environmental Protection Agency and the River Mile 11 East (RM11E) Group have prepared this fact sheet to provide community members with updated information concerning the RM11E project area which is part of the Portland Harbor Superfund Site (see figure below). The site-wide Portland Harbor Remedial Investigation indicates that there is potential for long-term health risks from eating fish taken from the RM11E project area. The U.S. Environmental Protection Agency (EPA) issued the Record of Decision (ROD) for the Portland Harbor in January 2017. The ROD requires cleanup in the RM11E area.

Project Area Description

The RM11E project area is located along the east bank of the Willamette River between approximately RM 10.9 and RM 11.6, just south of the Fremont Bridge, and includes approximately 38 acres of river bottom and shoreline. RM11E is within the historic Albina area, which has hosted a wide variety of industrial facilities and overwater operations, in addition to many ongoing industrial and marine operations, for more than 100 years. The Willamette River in this area has been redirected, straightened, filled, and deepened during the last century to make it usable for navigation and commercial shipping. Artificial fill has been added to much of the project area over the years.



River Mile 11E Group

The River Mile 11E Group is a small group of parties who either have in the past or currently own property and/or have business operations in the vicinity of the RM11E project area. These six parties have stepped forward to work with EPA and its partners to perform additional work that advances the cleanup.

Members of the RM11E Group include:

- Cargill, Inc.
- CBS Corporation
- City of Portland
- DIL Trust
- Glacier Northwest, Inc.
- PacifiCorp

An Administrative Settlement and Order on Consent (ASOC or AOC) between EPA and the RM11E Group was finalized on April 15, 2013. The AOC required the RM11E Group to pay for and conduct investigation activities specific to RM11E that supplemented the larger Portland Harbor Remedial Investigation/Feasibility Study. The additional work performed at RM11E over the past several years allows design and construction of the final remedy for the RM11E project area to begin more quickly than at other areas within the Portland Harbor Superfund Site.

Information regarding work performed at the Portland Harbor Superfund Site, including RM11E, is available at EPA's website: www.epa.gov/superfund/portland-harbor

River Mile 11E Work Completed to Date

The RM11E Group has collected and evaluated data to better understand the implementability considerations of a remedy, as well as the potential for recontamination after the active remedy for the RM11E project area is completed. While the ROD provides a general outline for how the Portland Harbor Superfund Site will be cleaned up, additional details specific to many of the smaller areas within the site, such as RM11E, need to be refined to ensure the overall remedy is successful. The implementability study for the RM11E project area looked at how the unique physical site features, river dynamics, existing structures and ongoing business operations in this area may impact and be impacted by the remedy. The recontamination assessment, which was submitted as a draft to EPA in May 2018, evaluates whether potential sources of contamination, such as chemicals in industrial discharges, upland groundwater, stormwater and riverbank erosion, have been adequately controlled to prevent future recontamination.

The RM11E Group is now working on designing the remedy. In May 2018, the RM11E Group submitted to EPA a work plan for a Basis of Design Report, which is the next step in the remediation process.

Questions?

Cindy Ryals

503-823-5830

cindy.ryals@portlandoregon.gov

Laura Knudsen

206-553-1838

knudsen.laura@epa.gov

If you need materials in an alternative format, please contact Laura Knudsen at 800-424-4372, ext. 1838

 *TTY users: please call the Federal Relay Service: 800-877-8339 and ask for Laura Knudsen*