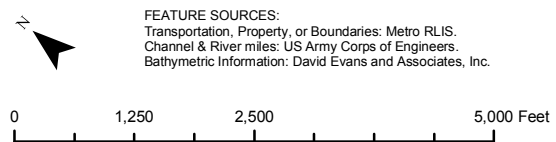


P:\Projects\B0101 LWG Portland Harbor\SubTasks\B0101_84D_Sect4\Production_MXD\Map 4 - 4-3a_Herbicides_Pesticides.mxd - 4/13/2011 @ 2:35:34 PM

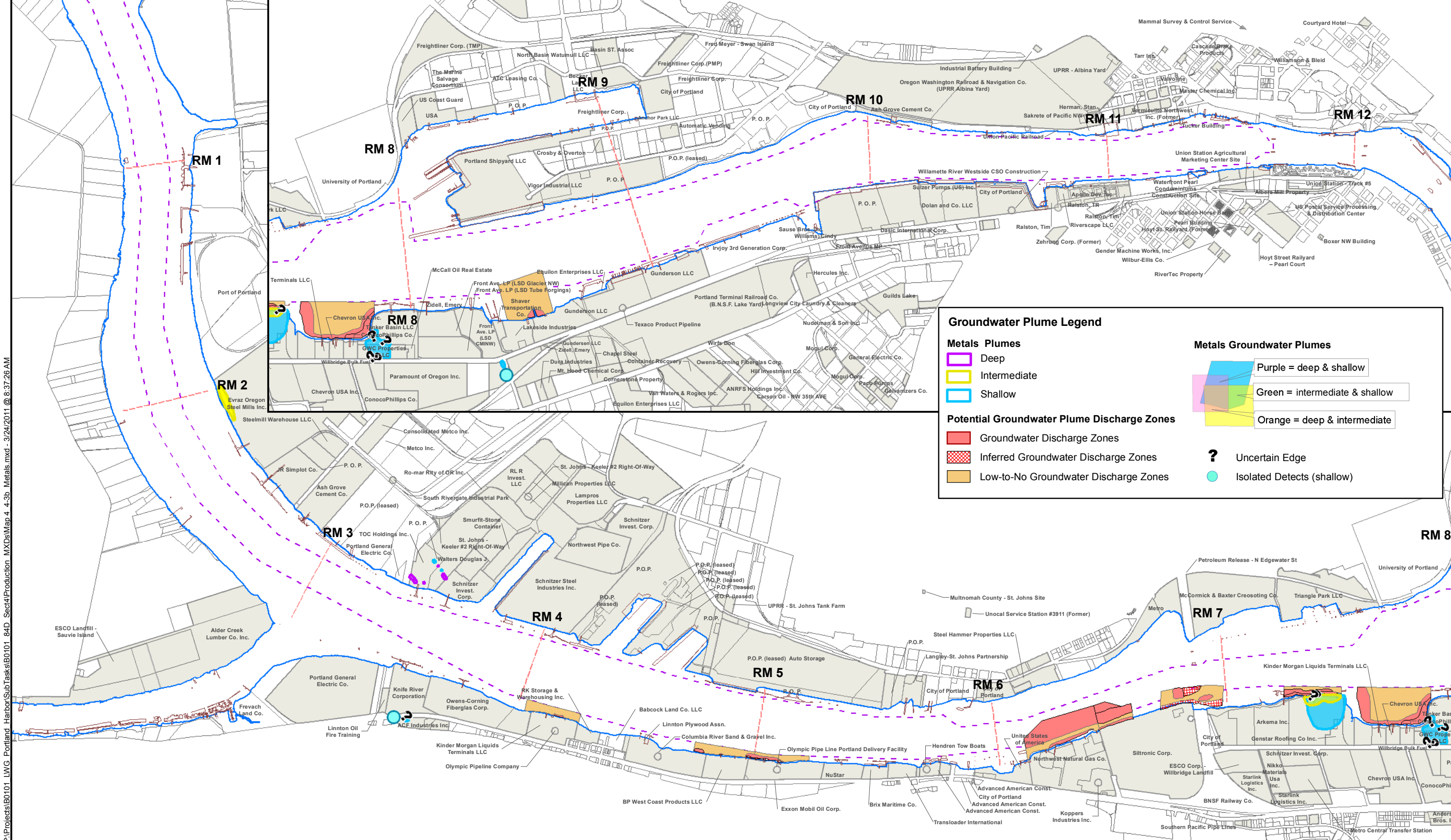


FEATURE SOURCES:
 Transportation, Property, or Boundaries: Metro RLIS.
 Channel & River miles: US Army Corps of Engineers.
 Bathymetric Information: David Evans and Associates, Inc.

- Map Features**
- Navigation Channel (Dashed purple line)
 - River Miles (Dashed red line)
 - River Edge +13 ft NAVD (Blue line)
 - Upland ECSI Sites (2009) (Grey shaded area)
 - Waterfront Taxlots (White area)

DRAFT
 DO NOT QUOTE OR CITE
 This document is currently under review by US EPA and its federal, state, and tribal partners, and is subject to change in whole or in part.

Figure 1.2-20a
 Portland Harbor RI/FS
 Remedial Investigation Report
 Extent of Groundwater Plume Impact
 Herbicides/Pesticides



Groundwater Plume Legend

Metals Plumes

- Deep (Purple outline)
- Intermediate (Yellow outline)
- Shallow (Blue outline)

Potential Groundwater Plume Discharge Zones

- Groundwater Discharge Zones (Red solid fill)
- Inferred Groundwater Discharge Zones (Red hatched fill)
- Low-to-No Groundwater Discharge Zones (Orange solid fill)

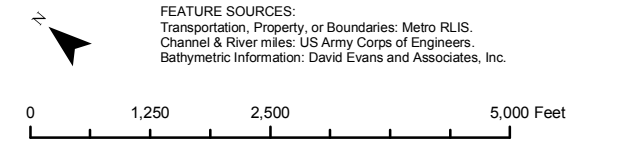
Metals Groundwater Plumes

- Purple = deep & shallow
- Green = intermediate & shallow
- Orange = deep & intermediate

Other Symbols

- ? Uncertain Edge
- Isolated Detects (shallow)

P:\Projects\B0101 LWG Portland Harbor\SubTasks\B0101_84D_Sect4\Production_MXD\Map 4 - 4-3b_Metals.mxd - 3/24/2011 @ 8:37:26 AM

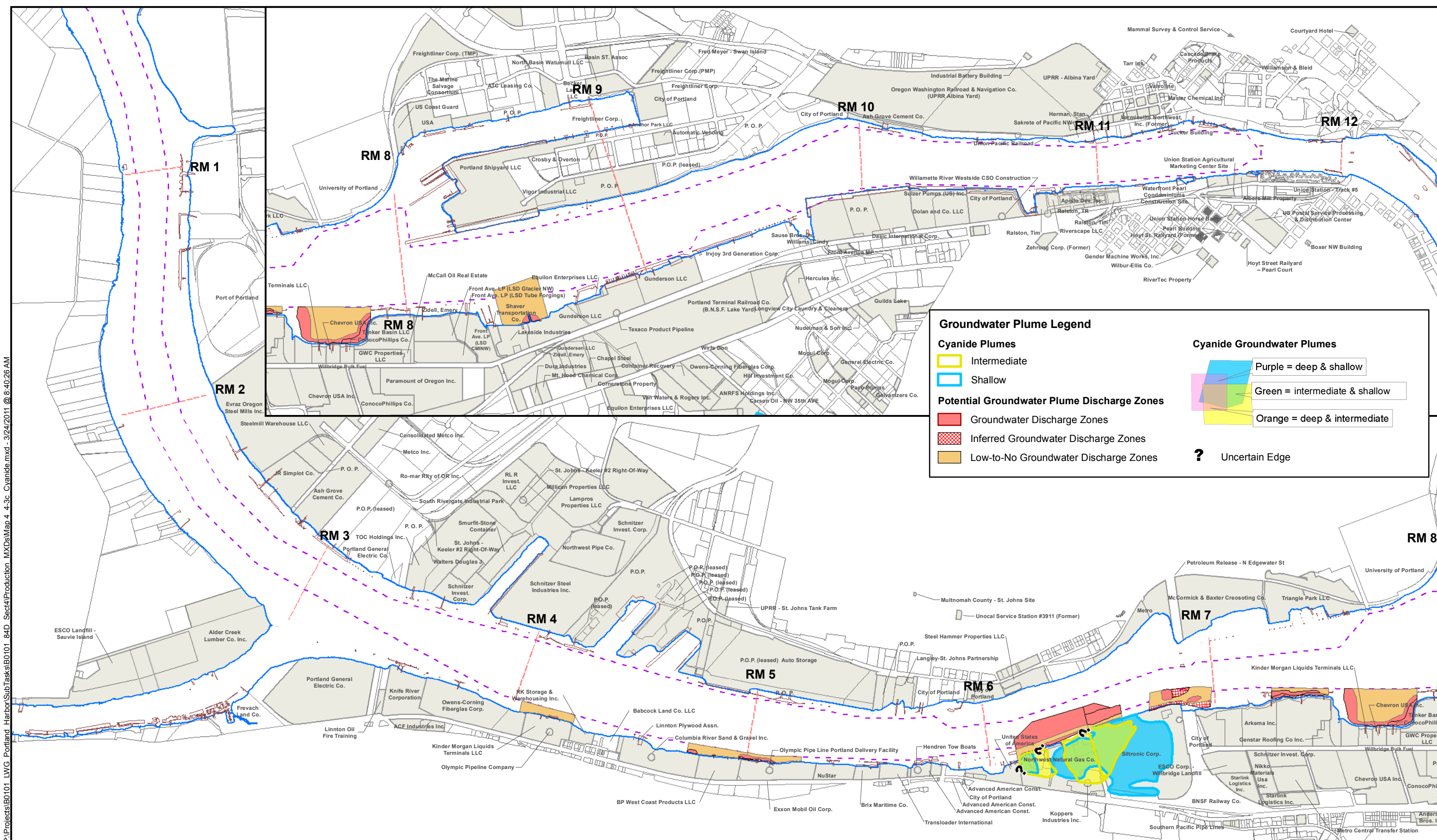


- Map Features**
- River Miles
 - - - Navigation Channel
 - ▭ River Edge +13 ft NAVD
 - ▭ Upland ECSI Sites (2009)
 - ▭ Waterfront Taxlots

DRAFT
 DO NOT QUOTE OR CITE
 This document is currently under review by US EPA and its federal, state, and tribal partners, and is subject to change in whole or in part.

Figure 1.2-20b
 Portland Harbor RI/FS
 Remedial Investigation Report
 Extent of Groundwater Plume Impact
 Metals

P:\Projects\B0101 LWG Portland Harbor\SubTasks\B0101_84D_Sect4\Production_MXD\Map 4 - 4-3c Cyanide.mxd - 3/24/2011 @ 8:40:26 AM



Groundwater Plume Legend

Cyanide Plumes

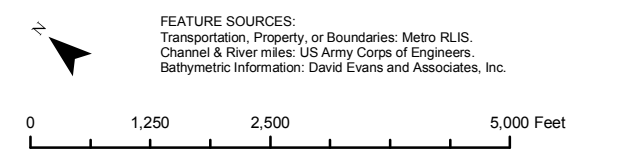
- Intermediate
- Shallow

Potential Groundwater Plume Discharge Zones

- Groundwater Discharge Zones
- Inferred Groundwater Discharge Zones
- Low-to-No Groundwater Discharge Zones

Cyanide Groundwater Plumes

- Purple = deep & shallow
- Green = intermediate & shallow
- Orange = deep & intermediate
- ? Uncertain Edge

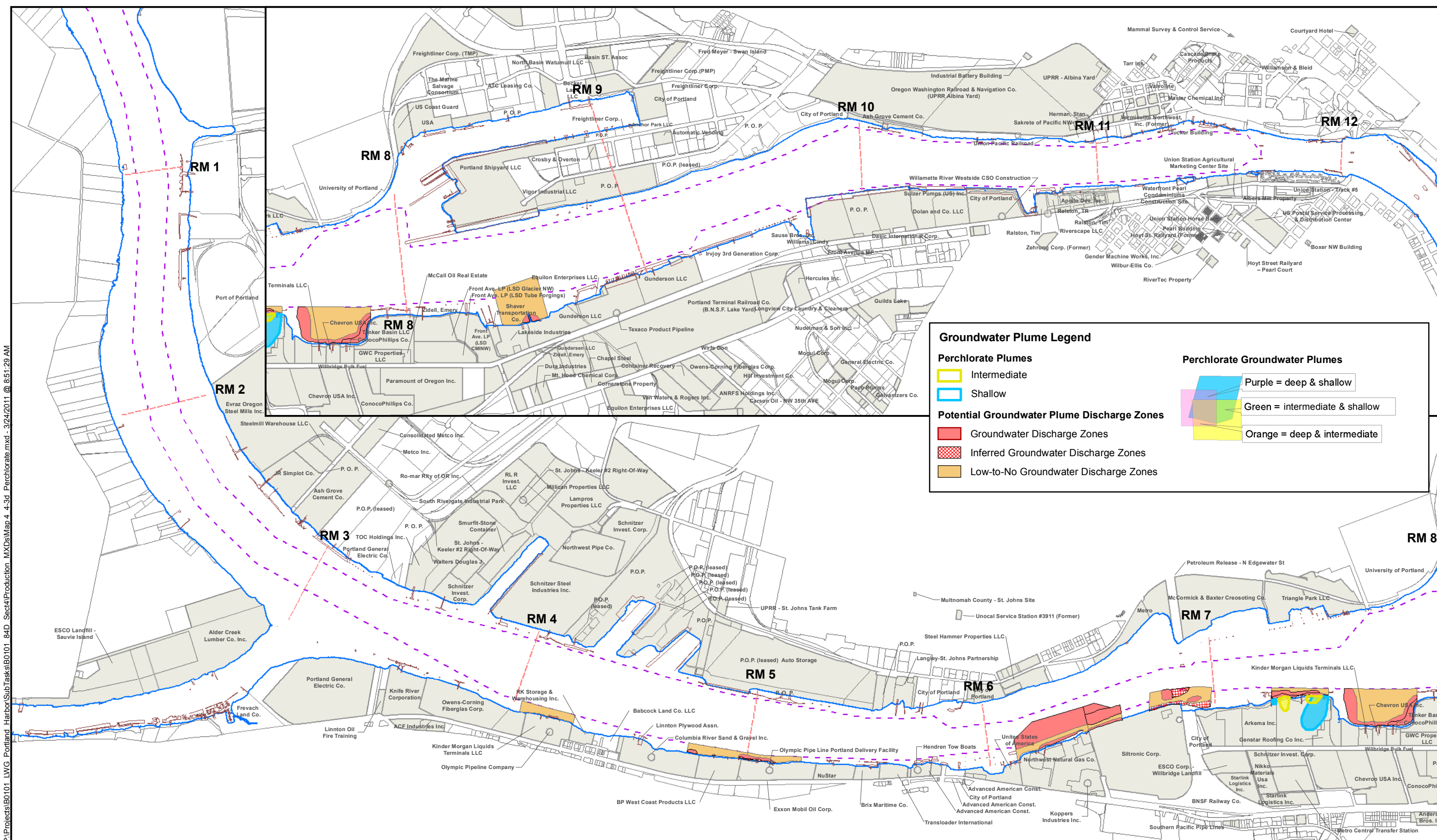


- Map Features**
- River Miles
 - Navigation Channel
 - River Edge +13 ft NAVD
 - Upland ECSI Sites (2009)
 - Waterfront Taxlots

DRAFT
DO NOT QUOTE OR CITE
This document is currently under review by US EPA and its federal, state, and tribal partners, and is subject to change in whole or in part.

Figure 1.2-20c
Portland Harbor RI/FS
Remedial Investigation Report
Extent of Groundwater Plume Impact
Cyanide

P:\Projects\B0101 LWG Portland Harbor\SubTasks\B0101_84D_Sect4\Production_MXD\Map 4_4-3d_Perchlorate.mxd - 3/24/2011 @ 8:51:28 AM



Groundwater Plume Legend

Perchlorate Plumes

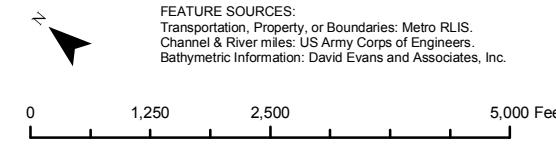
- Intermediate (Yellow)
- Shallow (Light Blue)

Potential Groundwater Plume Discharge Zones

- Groundwater Discharge Zones (Red)
- Inferred Groundwater Discharge Zones (Hatched)
- Low-to-No Groundwater Discharge Zones (Brown)

Perchlorate Groundwater Plumes

- Purple = deep & shallow
- Green = intermediate & shallow
- Orange = deep & intermediate



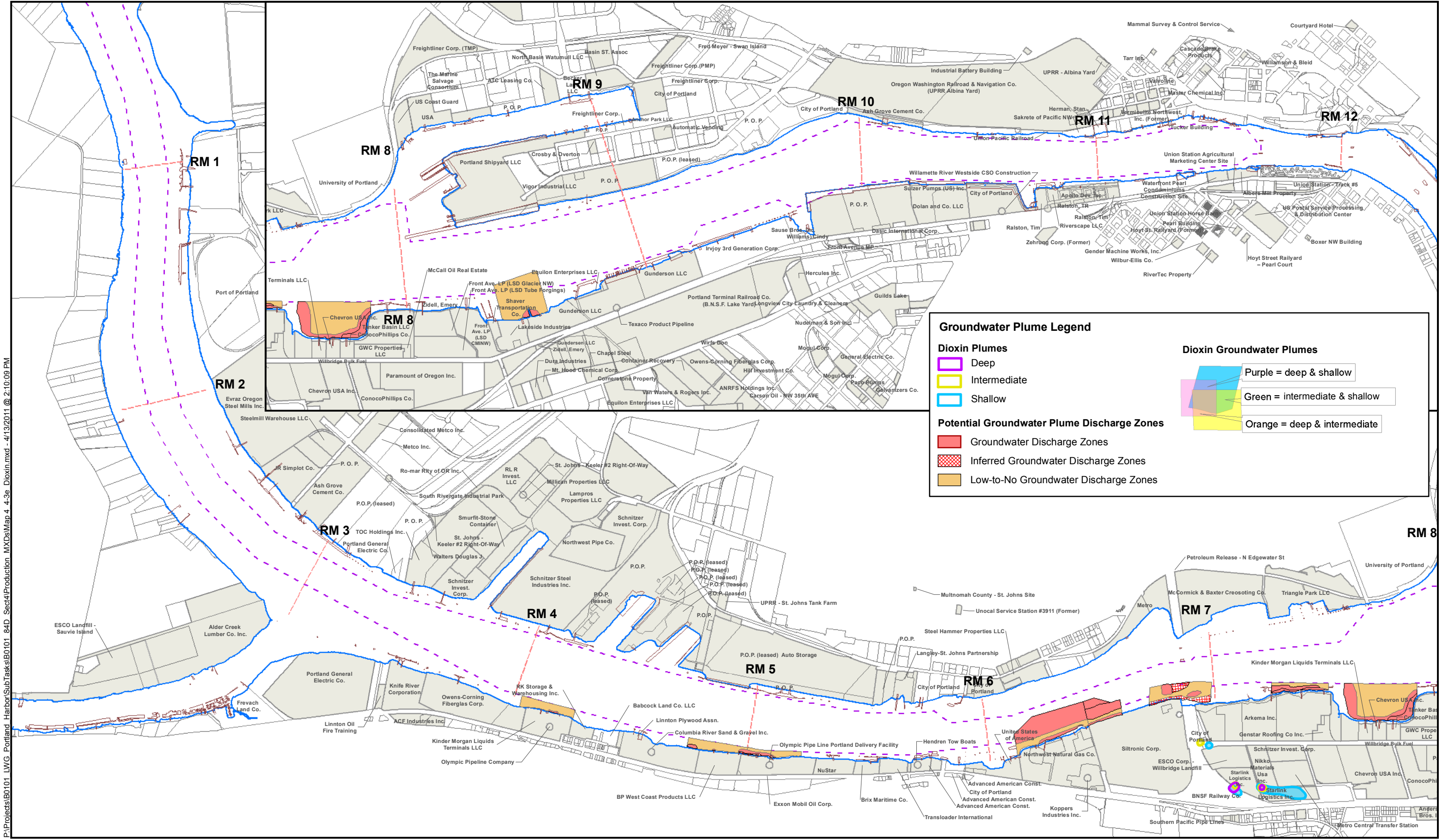
FEATURE SOURCES:
Transportation, Property, or Boundaries: Metro RLIS.
Channel & River miles: US Army Corps of Engineers.
Bathymetric Information: David Evans and Associates, Inc.

- Map Features**
- River Miles (Dashed line)
 - Navigation Channel (Dotted line)
 - River Edge +13 ft NAVD (Solid blue line)
 - Upland ECSI Sites (2009) (Grey shaded area)
 - Waterfront Taxlots (White area)

DRAFT
DO NOT QUOTE OR CITE
This document is currently under review by US EPA and its federal, state, and tribal partners, and is subject to change in whole or in part.

Figure 1.2-20d
Portland Harbor RI/FS
Remedial Investigation Report
Extent of Groundwater Plume Impact
Perchlorate

P:\Projects\B0101 LWG Portland Harbor\SubTasks\B0101_84D_Sect4\Production_MXD\Map 4_4-3e_Dioxin.mxd - 4/13/2011 @ 2:10:09 PM



Groundwater Plume Legend

Dioxin Plumes

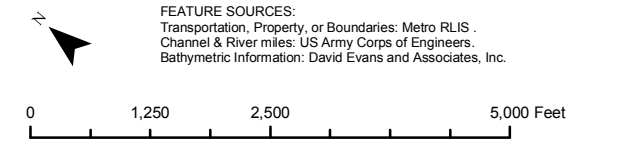
- Deep
- Intermediate
- Shallow

Dioxin Groundwater Plumes

- Purple = deep & shallow
- Green = intermediate & shallow
- Orange = deep & intermediate

Potential Groundwater Plume Discharge Zones

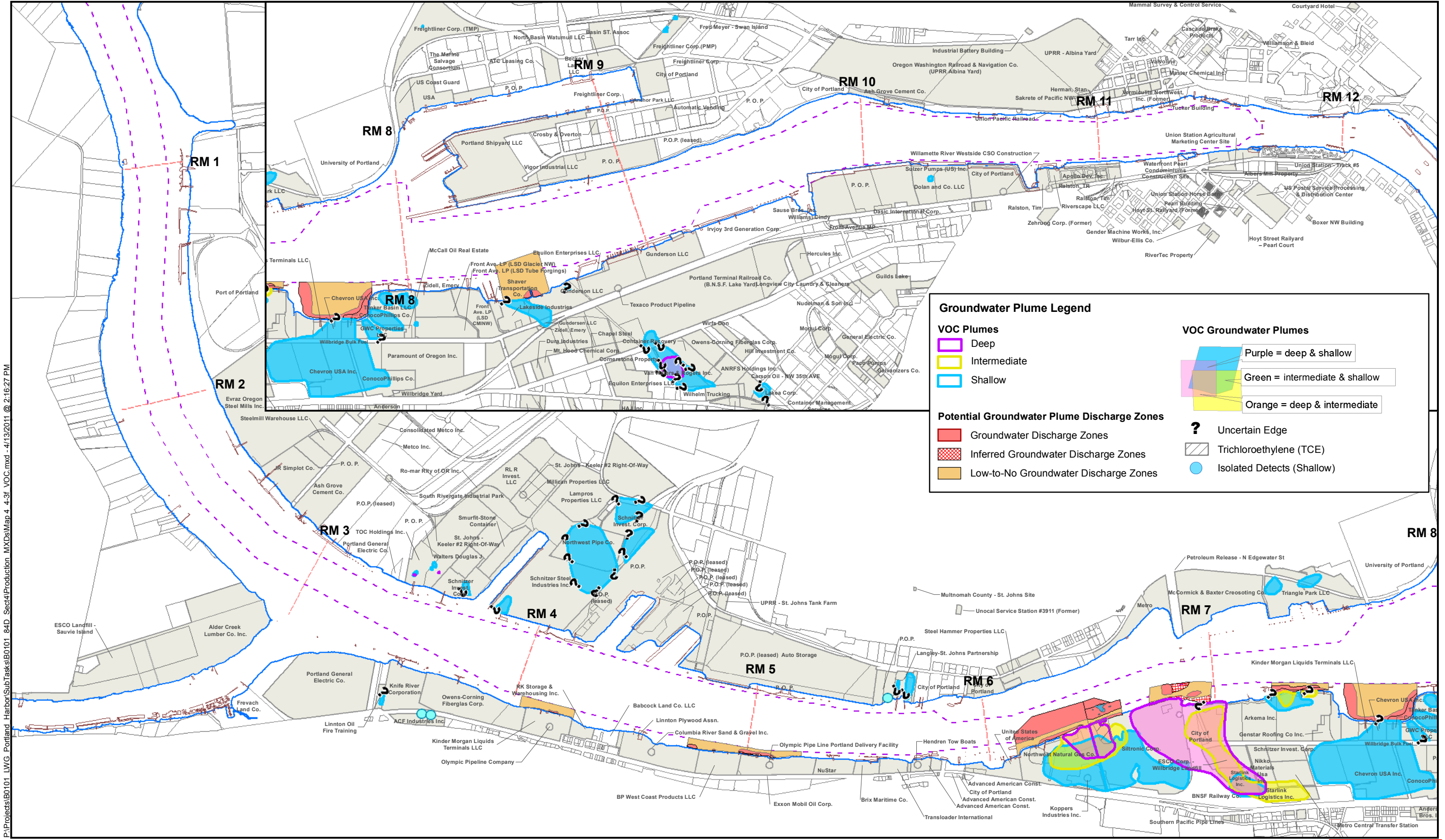
- Groundwater Discharge Zones
- Inferred Groundwater Discharge Zones
- Low-to-No Groundwater Discharge Zones



- Map Features**
- River Miles
 - Navigation Channel
 - River Edge +13 ft NAVD
 - Upland ECSI Sites (2009)
 - Waterfront Taxlots

DRAFT
DO NOT QUOTE OR CITE
This document is currently under review by US EPA and its federal, state, and tribal partners, and is subject to change in whole or in part.

Figure 1.2-20e
Portland Harbor RI/FS
Remedial Investigation Report
Extent of Groundwater Plume Impact
Dioxin



Groundwater Plume Legend

VOC Plumes

- Deep (Purple)
- Intermediate (Yellow)
- Shallow (Blue)

VOC Groundwater Plumes

- Purple = deep & shallow
- Green = intermediate & shallow
- Orange = deep & intermediate

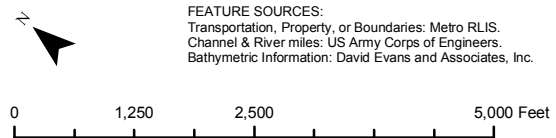
Potential Groundwater Plume Discharge Zones

- Groundwater Discharge Zones (Red)
- Inferred Groundwater Discharge Zones (Red with diagonal lines)
- Low-to-No Groundwater Discharge Zones (Orange)

Other Symbols

- ? Uncertain Edge
- Trichloroethylene (TCE) (Hatched box)
- Isolated Detects (Shallow) (Blue circle)

P:\Projects\B0101 LWG Portland Harbor\SubTasks\B0101_84D_Sect4\Production_MXD\Map 4 - 4-3f_VOC.mxd - 4/13/2011 @ 2:16:27 PM



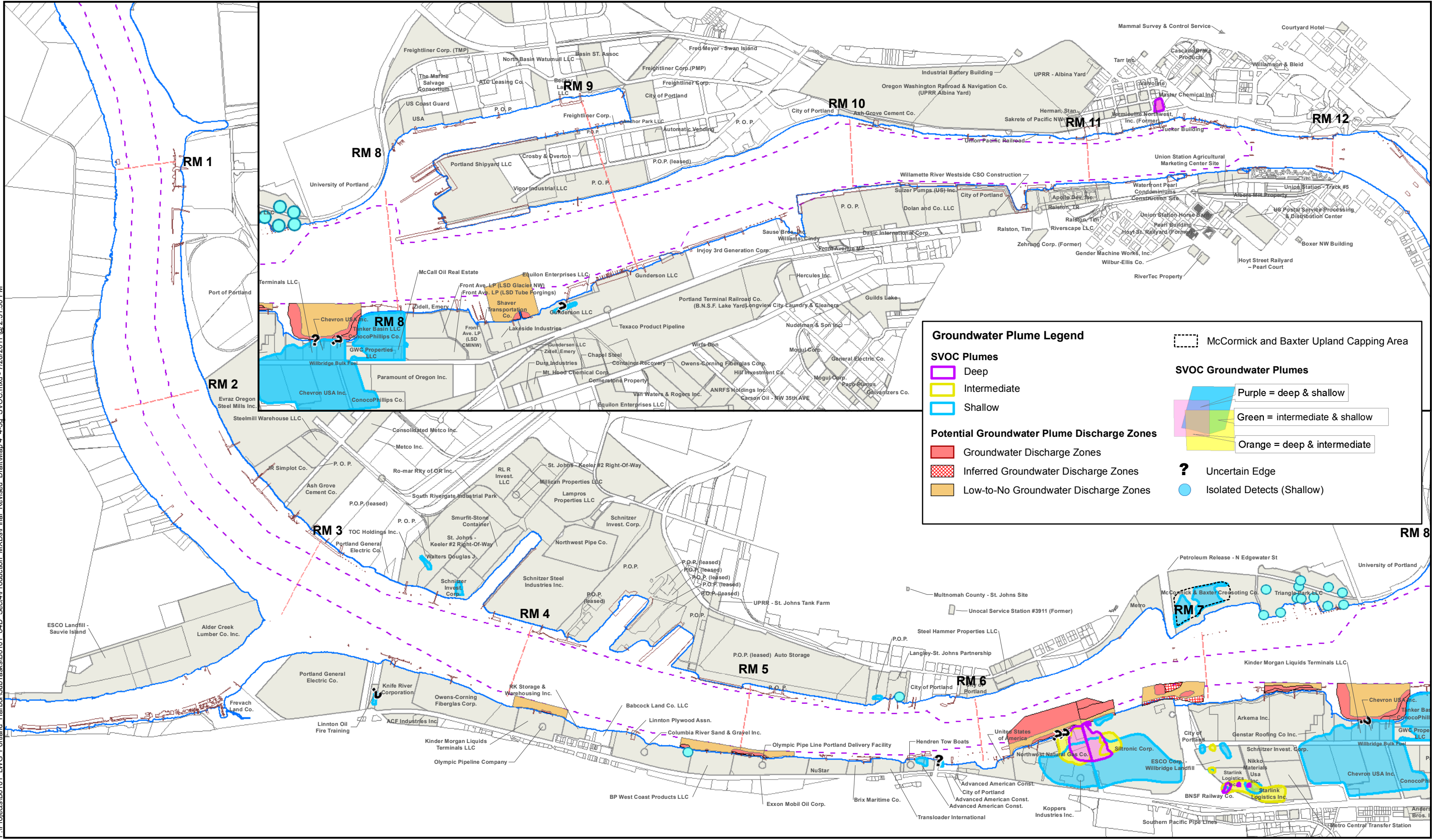
FEATURE SOURCES:
 Transportation, Property, or Boundaries: Metro RLIS.
 Channel & River miles: US Army Corps of Engineers.
 Bathymetric Information: David Evans and Associates, Inc.

- Map Features**
- River Miles
 - - - Navigation Channel
 - River Edge +13 ft NAVD
 - Upland ECSI Sites (2009)
 - Waterfront Taxlots

DRAFT
 DO NOT QUOTE OR CITE
 This document is currently under review by US EPA and its federal, state, and tribal partners, and is subject to change in whole or in part.

Figure 1.2-20f
 Portland Harbor RI/FS
 Remedial Investigation Report
 Extent of Groundwater Plume Impact
 VOCs

P:\Projects\B0101 LWG Portland Harbor\SubTasks\B0101_84D_Sect4\Production_MXD\Final Revised Draft\Map 4 4-3g_SVOC.mxd - 7/26/2011 @ 2:51:50 PM



Groundwater Plume Legend

SVOC Plumes

- Deep (Purple outline)
- Intermediate (Yellow outline)
- Shallow (Blue outline)

Potential Groundwater Plume Discharge Zones

- Groundwater Discharge Zones (Red)
- Inferred Groundwater Discharge Zones (Hatched)
- Low-to-No Groundwater Discharge Zones (Brown)

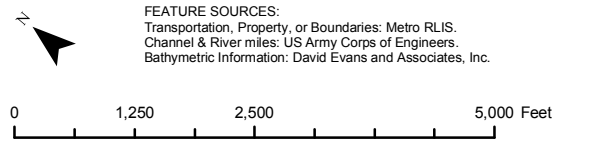
SVOC Groundwater Plumes

- Purple = deep & shallow
- Green = intermediate & shallow
- Orange = deep & intermediate

Other Symbols

- ? Uncertain Edge
- Isolated Detects (Shallow)

McCormick and Baxter Upland Capping Area (Dashed line)



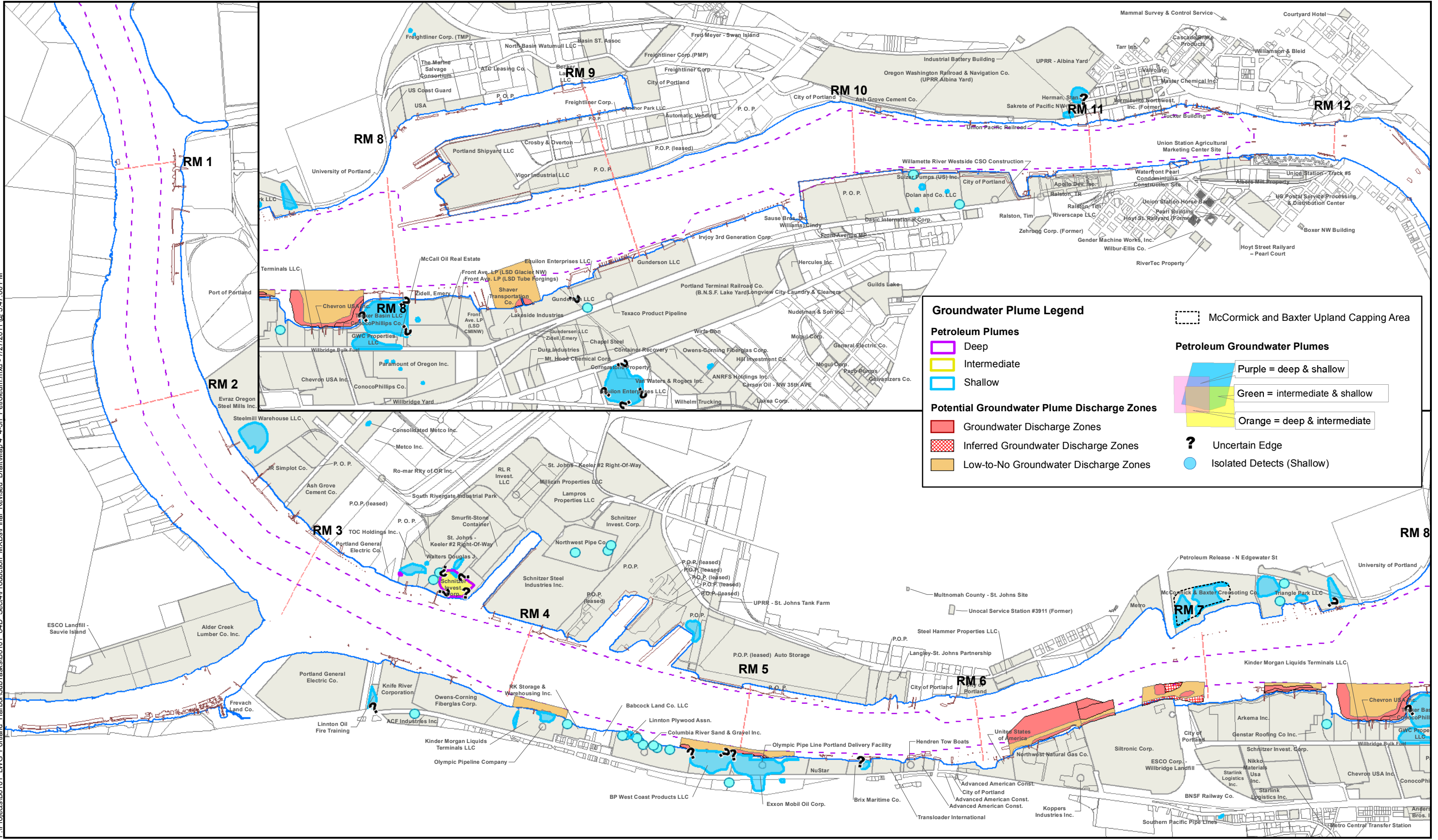
FEATURE SOURCES:
 Transportation, Property, or Boundaries: Metro RLIS.
 Channel & River miles: US Army Corps of Engineers.
 Bathymetric Information: David Evans and Associates, Inc.

- Map Features**
- River Miles
 - - - Navigation Channel
 - River Edge +13 ft NAVD
 - Upland ECSI Sites (2009)
 - Waterfront Taxlots

DRAFT
 DO NOT QUOTE OR CITE
 This document is currently under review by US EPA and its federal, state, and tribal partners, and is subject to change in whole or in part.

Figure 1.2-20g
 Portland Harbor RI/FS
 Remedial Investigation Report
 Extent of Groundwater Plume Impact
 SVOCs

P:\Projects\B0101 LWG Portland Harbor\SubTasks\B0101_84D_Sect4\Production_MXD\Final_Updated_DraftMap 4 - 4-3h_Petroleum.mxd - 7/27/2011 @ 3:47:00 PM



Groundwater Plume Legend

Petroleum Plumes

- Deep
- Intermediate
- Shallow

Potential Groundwater Plume Discharge Zones

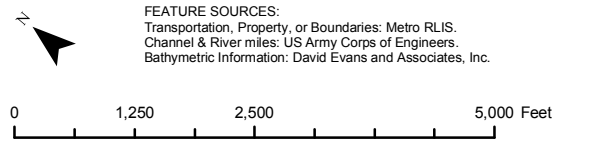
- Groundwater Discharge Zones
- Inferred Groundwater Discharge Zones
- Low-to-No Groundwater Discharge Zones

Petroleum Groundwater Plumes

- Purple = deep & shallow
- Green = intermediate & shallow
- Orange = deep & intermediate

Other Symbols

- McCormick and Baxter Upland Capping Area
- ? Uncertain Edge
- Isolated Detects (Shallow)



FEATURE SOURCES:
 Transportation, Property, or Boundaries: Metro RLIS.
 Channel & River miles: US Army Corps of Engineers.
 Bathymetric Information: David Evans and Associates, Inc.

- Map Features**
- River Miles
 - Navigation Channel
 - River Edge +13 ft NAVD
 - Upland ECSI Sites (2009)
 - Waterfront Taxlots

DRAFT
 DO NOT QUOTE OR CITE
 This document is currently under review by US EPA and its federal, state, and tribal partners, and is subject to change in whole or in part.

Figure 1.2-20h
 Portland Harbor RI/FS
 Remedial Investigation Report
 Extent of Groundwater Plume Impact
 Petroleum