



# Community Information Session

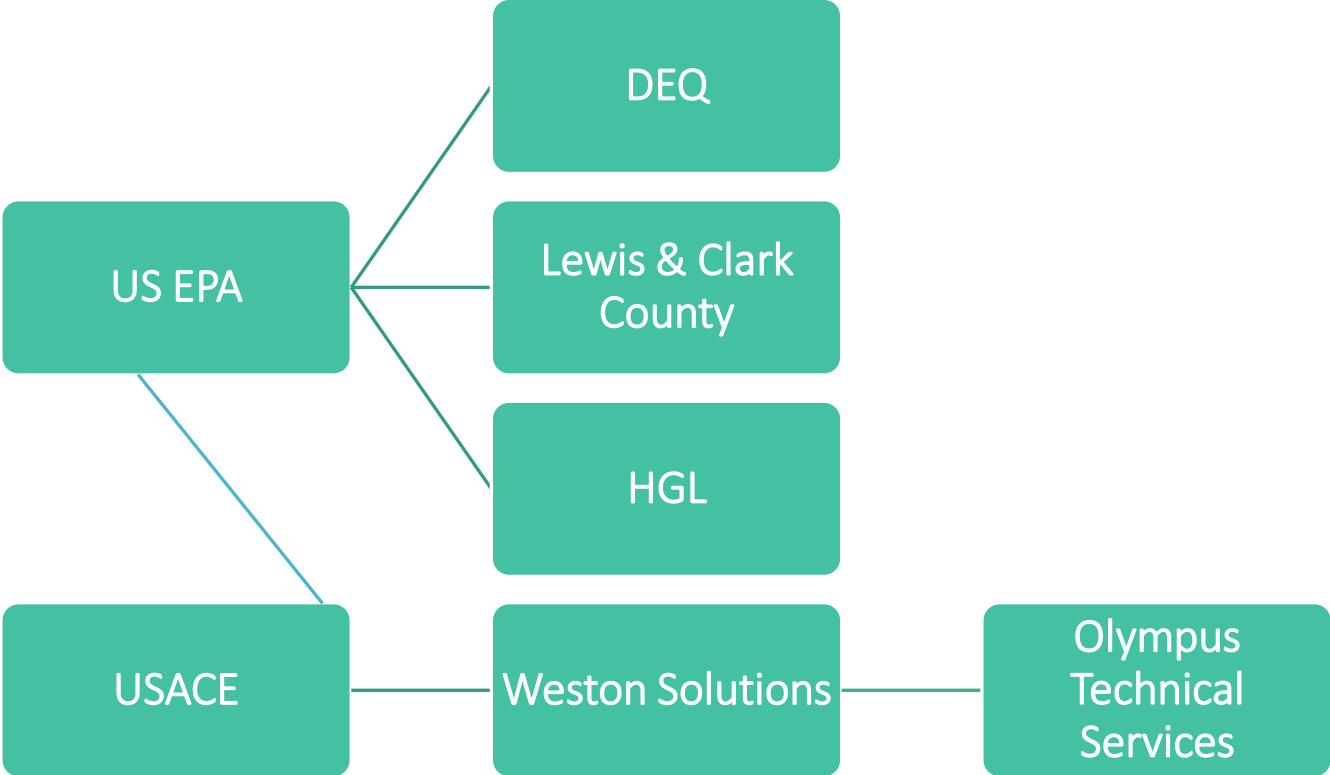
---

EAST HELENA SUPERFUND SITE

APRIL 22ND, 2026

# Introductions

---





# Background

---

In the past, only properties with lead > 1,000 ppm qualified for cleanup, and only those parts of the property >500 ppm lead were cleaned up.

In **January 2024**, the Explanation of Significant Differences (ESD) was finalized. The ESD:

- **Removed the 1,000-ppm action level from the 2009 Record of Decision (ROD), and**
- **Lowered the cleanup level for East Helena from 500 ppm to 400 ppm.**

This means that yards with 400 ppm or more soil-lead on average now qualify for cleanup.

EPA and USACE entered into an interagency agreement in 2024 for yard cleanups

Update: In March 2026, Weston Solutions was selected as the contractor to conduct cleanups in East Helena. We expect to begin yard cleanups in June 2026 and work until October (weather dependent).

# How Properties Qualify for a Yard Cleanup

---

- For yards with 400ppm or more soil-lead on average, cleanups will be "whole yard," meaning the entire property (not a quadrant-based approach). Removing all affected soil also means EPA will not have to return in the future, even if the cleanup level is lowered again.
- For yards with < 400 ppm average, high-exposure areas, such as play areas, gardens, and bare-dirt areas may be sampled. If soil-lead is detected at >400 ppm in high-exposure areas, those specific high-exposure areas may be cleaned up.
- Questions about your yard's status? – please reach out using the contact information at the end of this presentation

# Next Steps For Yards that Qualify for a Cleanup

---

- EPA needs a signed consent for access form to begin work
  - 100+ East Helena residents have already returned consent for access agreements
  - EPA will work with renters and landlords on consent for access and notice.
- The East Helena Site team (EPA/USACE/DEQ/Weston) will individually contact residents to schedule cleanups.
- Individual cleanup plans will be made in consultation with property owners after discussion and mutual agreement
  - Concerns about trees, shrubs, sprinkler systems, special features will be addressed.

# What to expect during yard cleanups

---

- After individual cleanup plans are agreed on by the homeowner, contractors will schedule a day for your cleanup to begin.
- Utility locate teams will visit your property in advance to flag any buried gas, water, sprinkler, etc lines. The site team will also work with the county to identify and locate septic systems.
- The contractor will use drones to map properties and document existing conditions
- Cleanups will take approximately three to four days, depending on yard size. Larger properties may take up to a week.

# What to expect during yard cleanups (cont.)

---

- Grass / ground covering and all affected soil will be removed down to 18 inches. Garden areas will be remediated down to 24 inches.
  - This soil will be taken to the slag pile and used for future slag cover design.
- Clean fill and topsoil will be placed in the yard, followed by groundcover in line with previous groundcover (sod, pea gravel, etc).
- It is important for property owners and residents to follow watering and care instructions for new landscaping



# East Helena Community Meeting

---

Trust.  
Performance.  
People.



# Trust. Performance. People.

The guiding principle behind every choice and every challenge since 1957



**100% employee-owned national environmental and infrastructure support services firm** serving Federal government, industrial, and commercial clients.



**Mid-size, nimble and capable**, national environmental and infrastructure support services firm.



For over **65 years**, we have solved our clients' most complex challenges with a passion to make a difference for a better tomorrow.



Our team is committed to providing **ultimate safety** and value for our clients and driven to be the most effective, efficient service provider in our target markets.



We are dedicated to performing **meaningful work** that **benefits** both the environment and communities.

“

*As we move into the next century, the country needs to increase its use of sustainable technologies to ensure that future generations will have the ability to advance economically while living in an environmentally safe, secure and sustainable world. We intend to develop an organization to accelerate the development of new business opportunities under the sustainable development umbrella.*

**Roy F. Weston**, Founder, March 1996



# Who We Serve

Bringing best practices, practically, and innovation to help better our world



## Industrial

Maximizing efficiencies while mitigating liabilities



## Federal Government

Reframing mission readiness through the lens of resiliency



## State Government

Advancing the communities around us with novel and proven approaches



## Local Government

Delivering resourceful, specialized solutions within our own communities

# Our Solutions



## Environmental Planning and Permitting

- Environmental Siting and Constraints
- Site Specific Environmental Studies
- Site Selection
- Baseline Field Studies
- Land-Use Permitting
- Regulatory Compliance Evaluations
- Construction Monitoring and Compliance



## Digital Solutions

- Geospatial Services
- Information Management Consulting
- UAS/Data Acquisition



## Construction Services

- Fuel System Upgrades
- Energy Resilience
- Civil
- Secure Construction
- Fuels System Maintenance and Minor Repairs
- Facility Construction



## Multimedia Compliance

- Water Quality
- Waste Management
- Air Quality
- Sustainability
- Safety
- Environmental Reporting & Documentation
- Industrial Hygiene



## Site Investigation and Remediation

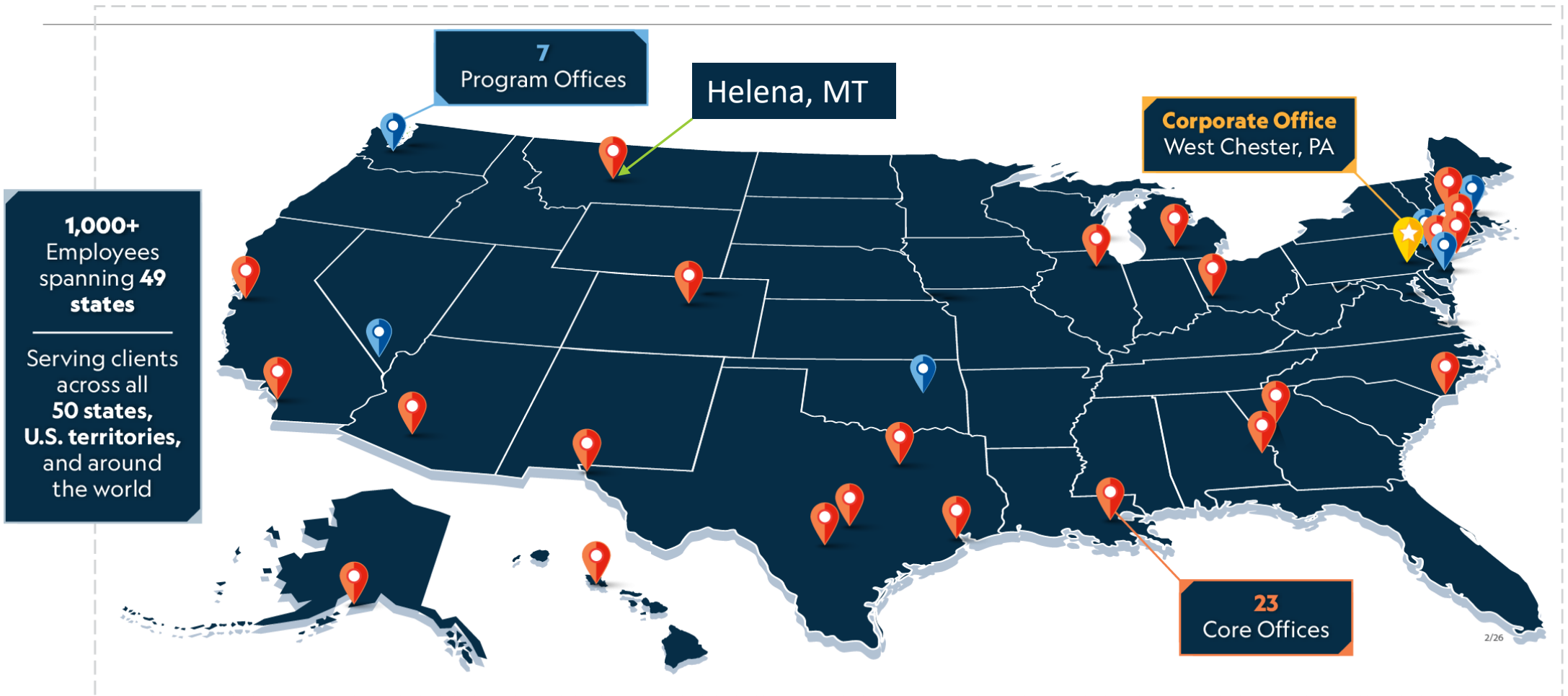
- Remediation
- Site Assessment
- Emergency Preparedness and Response Services
- Site Investigation
- Solid and Hazardous Waste Management
- Restoration, Reuse, + Redevelopment



## Engineering Design

- Structural
- Process Treatment
- Linear
- Water Resources
- MEP
- Earthwork Civil
- Stormwater Management

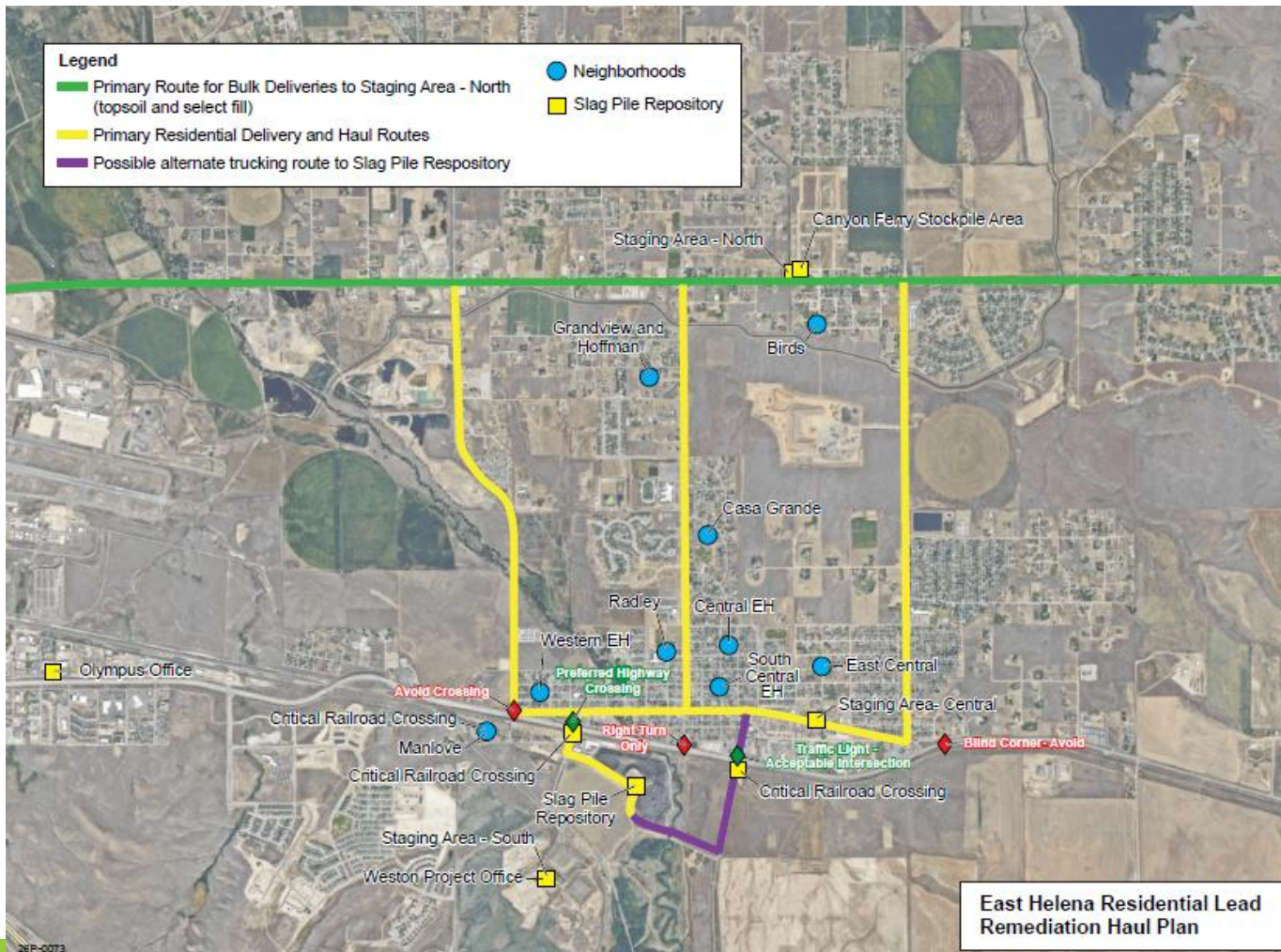
# We Are Located Near Our Customers and Their Sites



# East Helena Residential Lead Remediation

<p><b>Step 1</b> Community Support</p> 	<p><b>Step 2</b> Consent for Access/Property Coordination</p> 	<p><b>Step 3</b> Remediation Design Survey</p> 	<p><b>Step 4</b> Generate Existing Conditions Drawings</p> 	<p><b>Step 5</b> Remediation Design (RD)</p> 	<p><b>Step 6</b> Property Owner Signoff</p> 
<p><b>Step 7</b> Neighborhood-Specific Communication Plan</p> 	<p><b>Step 8</b> Preparatory Meeting</p> 	<p><b>Step 9</b> Site Preparation</p> 	<p><b>Step 10</b> Property Remediation</p> 	<p><b>Step 11</b> Monitoring During Remediation</p> 	<p><b>Step 12</b> Confirmation Sampling</p> 
<p><b>Step 13</b> Site Restoration</p> 	<p><b>Step 14</b> Post-Construction Design</p> 	<p><b>Step 15</b> Property Closeout</p> 	<p><b>Step 16</b> Post-Construction Observation Period</p> 	<p><b>Step 17</b> Final Property File</p> 	<p><b>Step 18</b> Remedial Action Completion Report (RACR)</p> 

# East Helena Residential Lead Remediation



## Initial Neighborhoods/Areas

- Casa Grande
- Central East Helena –
  - Dudley and Washington
- South Central East Helena
  - Riggs and Washington
- East Central
  - Maple and Clinton
- Radley
  - East King St.
- Western East Helena
  - Groschell and 1<sup>st</sup> St.
- Manlove
  - Manlove Avenue
- Birds
  - Meadowlark and Dove
- Grandview and Hoffman

# East Helena Residential Lead Remediation

## First Year Priorities

- 2026 will focus on Priority Properties:
  - Homes with small children (44)
  - Remaining properties will follow
- Additional Sampling of 75 homes
  - Ongoing through summer

## First Year Timeline

- Initial Field Mobilization
  - May 22, 2026
- Initial Property Coordination
  - Week of May 26, 2026
- Initial Excavation
  - Week of June 15, 2026
- End of Season
  - October 30, 2026
- Resume in 2027
  - March 2027

# East Helena Residential Lead Remediation

## First Year Priorities

- 2026 will focus on Priority Properties:
  - Homes with small children (44)
  - Remaining properties will follow
- Additional Sampling of 75 homes
  - Ongoing through summer

## First Year Timeline

- Initial Field Mobilization
  - May 22, 2026
- Initial Property Coordination
  - Week of May 26, 2026
- Initial Excavation
  - Week of June 15, 2026
- End of Season
  - October 30, 2026
- Resume in 2027
  - March 2027

# Questions so far?

---



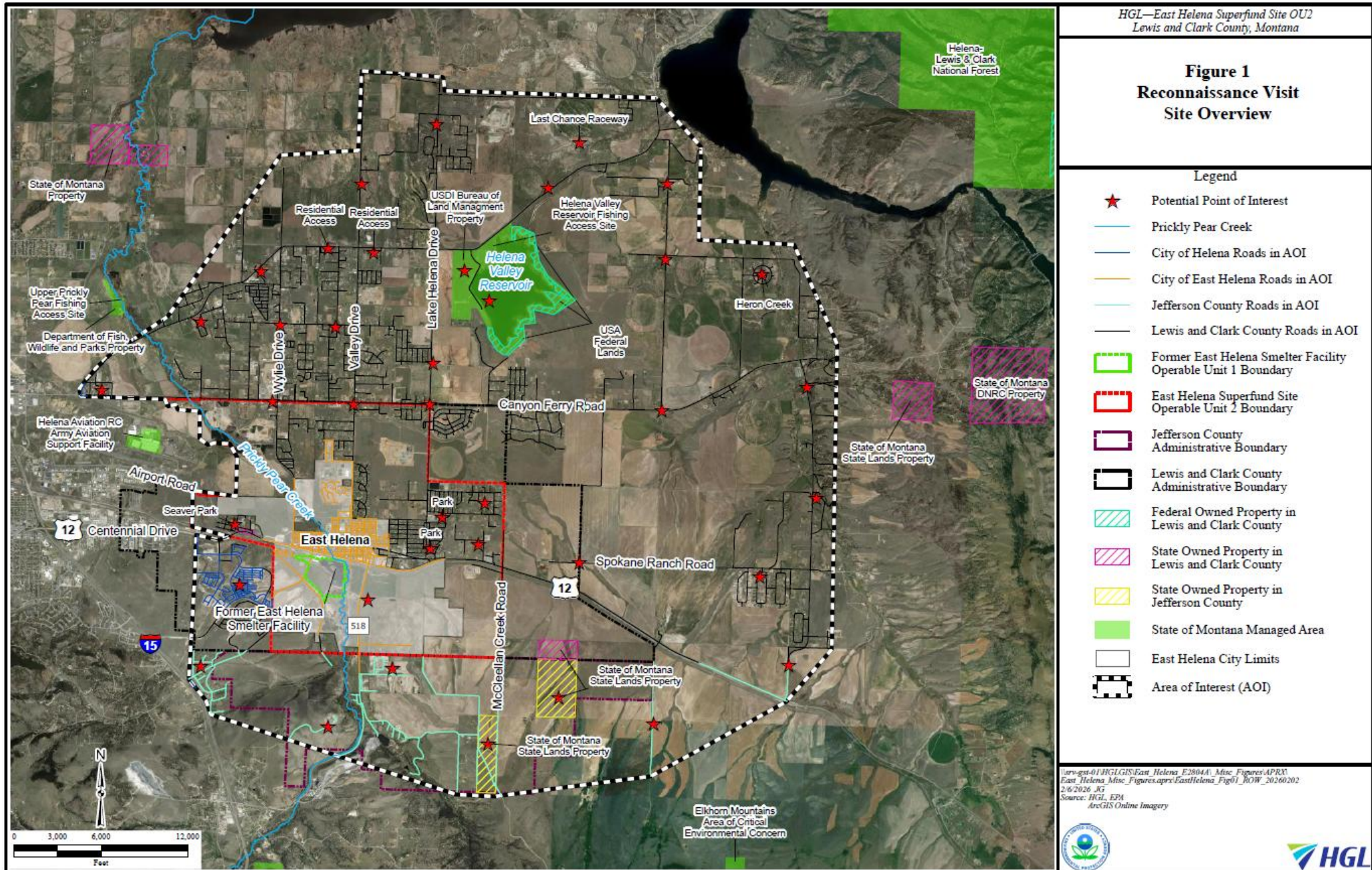
# Part two: Site boundary and cleanup level investigation

---



- In October 2025, EPA released a [new Directive](#) regarding lead cleanup levels at Superfund sites.
- The Directive standardized screening levels to 200 ppm and target blood-lead levels that project managers use in determining cleanup levels at sites.
- EPA is working with HGL on an RI/FS with two goals:
  1. Investigate the extent of lead and arsenic contamination from the former ASARCO smelter (boundary investigation)
  2. Determine if the current 400 ppm needs to be lowered to align with the Directive
- EPA and HGL are sampling yards inside and outside the current boundary for the RI/FS.

# Area of interest



# Lead Safety Tips

---

Activities are transitioning outside for the summer. Remember to:

- Knock mud and dirt off shoes before going inside
- Remove shoes when entering the home, and wash hands
- Use a wet mop to capture any dust
- Wipe down high-touch areas with a wet cloth to capture dust
- Keep bare-dirt areas of your yard covered by mulch or gravel, or try to re-seed.
- Monitor young children as they play outside and try to discourage play in bare-dirt areas

## Lewis & Clark County Lead Education & Assistance Program (LEAP)

- County-run resource for reducing lead exposure
- Free blood-lead testing services for children and adults

# Contact information

---

## EPA Site contacts:

- Bridget Williams (RPM):  
(406) 594-8792, [williams.bridget@epa.gov](mailto:williams.bridget@epa.gov)
- Jess Smith (RPM):  
(406) 438-0825, [smith.jessica.g@epa.gov](mailto:smith.jessica.g@epa.gov)
- Mackenzie Meter (CIC):  
(406) 970-5806, [meter.mackenzie@epa.gov](mailto:meter.mackenzie@epa.gov)

## Montana DEQ contact:

- Jacob Wheeling (MDEQ project officer):  
(406) 594-6749

## Lewis & Clark County contact:

- Steve Thennis (LEAP):  
(406) 431-1650

# Questions?

---

