

---

---

# FIELD SAMPLING PLAN ADDENDUM 10

## WEST LAKE LANDFILL SUPERFUND SITE OPERABLE UNIT 1

---

---

**Prepared For:**

The United States Environmental Protection Agency Region VII



**Prepared on Behalf of:**

The West Lake Landfill OU-1 Respondents

**Prepared By:**



301 Plainfield Road, Suite 350  
Syracuse, New York 13212

**In Association With:**



3377 Hollenberg Drive  
Bridgeton, Missouri 63044

**And**



9111 Cross Park Drive, Suite D200  
Knoxville, TN 37923

**SEPTEMBER 25, 2023**

# TABLE OF CONTENTS

LIST OF ACRONYMS .....	II
1.0 AREA 1 ADDITIONAL BORINGS .....	1
1.1 Introduction.....	1
1.2 Summary of Design Investigation Findings.....	1
1.3 Proposed Additional Boring Locations.....	1
1.4 Drilling and Sampling Methods and Protocols.....	2

## LIST OF TABLES

Table A10-1 Summary of Analytical Results  
Table A10-2 Proposed Addendum 10 Additional Borings

## LIST OF FIGURES

Figure A10-1 Ponding Area Near A1-PB-114 Series Borings  
Figure A10-2 Cross Sections Through 1973 Sediment Basin  
Figure A10-3 Proposed Boring Locations

## LIST OF ACRONYMS

<u>ACRONYM</u>	<u>Definition</u>
amsl	above mean sea level
bgs	below ground surface
ft	foot/feet
DIWP	Design Investigation Work Plan
DMP	Data Management Plan
DOE	U.S. Department of Energy
DPT	direct push technology
EPA	U.S. Environmental Protection Agency
FSP	Field Sampling Plan
OU	Operable Unit
pCi/g	picocurie/gram
QAPP	Quality Assurance Project Plan
RIM	radiologically impacted material
Site	West Lake Landfill Superfund Site

# 1.0 AREA 1 ADDITIONAL BORINGS

## 1.1 Introduction

This Field Sampling Plan (FSP) Addendum 10 has been prepared on behalf of West Lake Landfill OU-1 Respondents Bridgeton Landfill, LLC, Cotter Corporation (N.S.L.), and the U.S. Department of Energy (DOE) (collectively, Respondents) for the design investigation for the selected Amended Remedy for Operable Unit 1 (OU-1) of the West Lake Landfill Superfund Site (Site). The United States Environmental Protection Agency (EPA) approved (with modifications) the FSP, with the associated Design Investigation Work Plan (DIWP), Quality Assurance Project Plan (QAPP), and Data Management Plan (DMP), in September 2020. The final version of the FSP is dated October 16, 2020.

Addendum 10 has been prepared in response to: (i) analytical results from soil samples greater than 7.9 picocuries per gram (pCi/g) for combined thorium and/or combined radium in eight borings (WL-103-MH, A1-PB-114-A, A1-PB-114-B, A1-PB-114-D, A1-PB-114E, A1-PB-114-I, and A1-PB-115-A) drilled along the eastern boundary of Area 1 in OU-1; and (ii) in response to EPA's June 22, 2023 DIER Comment letter.

Additional step-out boring locations are proposed as part of this Addendum to complete delineation of the area and perform verification sampling in advance of excavation.

## 1.2 Summary of Design Investigation Findings

The A1-PB-114 series, WL-103-MH, and A1-PB-115-A are located in a former surface depression in what appears to be a graded sediment basin in the September 1973 aerial photograph (**Figure A10-1**). The sediment basin was limited in extent by surrounding higher ground shown in the 1973 aerial photograph and associated contours, as illustrated by cross sections (**Figure A10-2**). The basin may have received sediment containing RIM during precipitation events, as discussed in Appendix L of the DIER (Parsons 2023). The sediment basin was subsequently filled, burying the sediments.

RIM greater than 7.9 pCi/g was observed in eight samples from seven borings (WL-103-MH, A1-PB-114-A (two samples), A1-PB-114-B, A1-PB-114-D, A1-PB-114E, A1-PB-114-I, and A1-PB-115-A) that were drilled within the former basin boundaries. These eight samples had combined thorium ranging from 8.29 to 16.5 pCi/g. No samples had greater than 7.9 pCi/g of combined radium. The elevations of these samples ranged between 338 and 444 feet (ft) NAVD88 and predominantly between elevation 440 and 442 feet as shown on **Figure A10-2**. This is consistent with the conceptual site model that the radiologically impacted material (RIM) was deposited as stormwater sediment in the bottom of the sediment basin.

## 1.3 Proposed Additional Boring Locations

Additional sampling is proposed to delineate the extent of RIM within the former sediment basin. Analytical results in the deepest interval sampled (438.5 ft above mean sea level (amsl)) at these locations, as discussed above, exceed 7.9 pCi/g of combined thorium. Analytical results of previously collected samples are summarized in **Table A10-1**.

Five transects with five direct push technology (DPT) locations each, totaling 25 borings, are proposed within the former sediment basin as shown in **Figure A10-3**. The proposed borings will be advanced to 12 ft below ground

surface (bgs), targeting an elevation of 434 ft amsl, and approximately 4 ft below the deepest detection of RIM in the area (see **Table A10-1**). Samples will be collected continuously at 0–0.5 ft, 0.5–1 ft, and at 2-ft intervals thereafter.

Within the area where this sampling program delineates the lateral and vertical extent of 7.9 pCi/g of combined thorium or combined radium in this location, this extensive sampling program is intended to both delineate and verify removal extents so that the removals would be verified during remedial action using geometric survey, not additional analytical chemistry sampling. If there are areas where the lateral and vertical extent of 7.9 pCi/g of combined thorium or combined radium are not delineated in this sampling program, additional future sampling may be required.

## 1.4 Drilling and Sampling Methods and Protocols

The FSP standardizes the field procedures to be performed during the design investigation activities for OU-1. The work proposed in this Addendum uses those standard methods and protocols provided in the FSP. The specific provisions in the FSP that will be used are described below. The details regarding the proposed borings are summarized in **Table A10-2**.

DPT, as described in Section 2.2.1.1 of the FSP, will be used to drill the borings within the footprint of the former sediment basin (see **Figure A10-4**). The proposed borings will be advanced to 12 ft bgs targeting an elevation of 434 ft amsl, and approximately 4 ft below the deepest detection of RIM in the area. Soils will be logged and sampled following the procedures in FSP Section 2.4.2.6. Samples will be submitted for laboratory analysis of the parameters listed in FSP Section 2.4.5.2.

Proposed borings will be appropriately abandoned following the protocol described in FSP Section 2.2.3 immediately after drilling.

# TABLES

---

TABLE A10-1 SUMMARY OF ANALYTICAL RESULTS

Location ID	SYS SAMPLE CODE	SDG	Start Depth	End Depth	CHEMICAL_NAME RESULT_UNIT			ACTINIUM 227 pci/g				ACTINIUM 228 pci/g				BISMUTH-212 pci/g				BISMUTH-214 pci/g			
					Composite (Y/N)	Start Depth Below DID	End Depth Below DID	RESULT	QUALIFIERS	RESULT ERROR DELTA	MDL	RESULT	QUALIFIERS	RESULT ERROR DELTA	MDL	RESULT	QUALIFIERS	RESULT ERROR DELTA	MDL	RESULT	QUALIFIERS	RESULT ERROR DELTA	MDL
A1-PB-113	A1-PB-113-0.5-1-N	526807	0.5	1	N	0.5	1																
A1-PB-113	A1-PB-113-1-1.5-N	526807	1	1.5	N	1	1.5																
A1-PB-113	A1-PB-113-2-4-N	526807	2	4	Y	2	4																
A1-PB-113	A1-PB-113-4-6-N	526807	4	6	Y	4	6																
A1-PB-113	A1-PB-113-6-8-N	526807	6	8	Y	6	8																
A1-PB-113	A1-PB-113-8-10-N	526807	8	10	Y	8	10																
A1-PB-113	A1-PB-113-10-12-N	527036	10	12	Y	10	12																
A1-PB-113	A1-PB-113-12-14-N	527036	12	14	Y	12	14																
A1-PB-113	A1-PB-113-14-16-N	527036	14	16	Y	14	16																
A1-PB-113	A1-PB-113-16-18-N	527036	16	18	Y	16	18																
A1-PB-113	A1-PB-113-18-20-N	527036	18	20	Y	18	20																
A1-PB-113	A1-PB-113-20-22-N	527036	20	22	Y	20	22																
A1-PB-113	A1-PB-113-22-24-N	527036	22	24	Y	22	24																
A1-PB-113	A1-PB-113-24-25-N	527036	24	25	Y	24	25																
A1-PB-114-A	A1-PB-114-A-0-1-N	530226	0	1	N	0	1																
A1-PB-114-A	A1-PB-114-A-1-2-N	530226	1	2	N	1	2																
A1-PB-114-A	A1-PB-114-A-2-4-N	530226	2	4	Y	2	4																
A1-PB-114-A	A1-PB-114-A-4-6-N	530226	4	6	Y	4	6																
A1-PB-114-A	A1-PB-114-A-6-8-N	530226	6	8	Y	6	8																
A1-PB-114-A	A1-PB-114-A-8-10-N	530226	8	10	Y	8	10																
A1-PB-114-A	A1-PB-114-A-10-12-N	530226	10	12	Y	10	12																
A1-PB-114-A	A1-PB-114-A-12-14-N	530226	12	14	Y	12	14																
A1-PB-114-A	A1-PB-114-A-14-16-N	530226	14	16	Y	14	16																
A1-PB-114-A	A1-PB-114-A-16-18-N	530226	16	18	Y	16	18																
A1-PB-114-A	A1-PB-114-A-18-20-N	530226	18	20	Y	18	20																
A1-PB-114-A	A1-PB-114-A-20-22-N	530226	20	22	Y	20	22																
A1-PB-114-B	A1-PB-114-B-0-0.5-N	558206	0	0.5	N	0	0.5																
A1-PB-114-B	A1-PB-114-B-1.5-1.7-N	558206	1.5	1.7	N	1.5	1.7																
A1-PB-114-B	A1-PB-114-B-2-4-N	558206	2	4	Y	2	4																
A1-PB-114-B	A1-PB-114-B-4-6-N	558206	4	6	Y	4	6																
A1-PB-114-B	A1-PB-114-B-6-8-N	558206	6	8	Y	6	8																
A1-PB-114-B	A1-PB-114-B-8-10-N	558206	8	10	Y	8	10																
A1-PB-114-B	A1-PB-114-B-10-12-N	558206	10	12	Y	10	12																
A1-PB-114-B	A1-PB-114-B-12-14-N	558206	12	14	Y	12	14																
A1-PB-114-B	A1-PB-114-B-14-16-N	558206	14	16	Y	14	16																
A1-PB-114-B	A1-PB-114-B-16-18-N	558206	16	18	Y	16	18																
A1-PB-114-B	A1-PB-114-B-18-20-N	558206	18	20	Y	18	20																
A1-PB-114-C	A1-PB-114-C-0-0.5-N	558593	0	0.5	N	0	0.5																
A1-PB-114-C	A1-PB-114-C-1.5-1.7-N	558593	1.5	1.7	N	1.5	1.7																
A1-PB-114-C	A1-PB-114-C-2-4-N	558593	2	4	Y	2	4																
A1-PB-114-C	A1-PB-114-C-4-6-N	558593	4	6	Y	4	6																
A1-PB-114-C	A1-PB-114-C-6-8-N	558593	6	8	Y	6	8																
A1-PB-114-C	A1-PB-114-C-8-10-N	558593	8	10	Y	8	10																
A1-PB-114-C	A1-PB-114-C-10-12-N	558593	10	12	Y	10	12																
A1-PB-114-C	A1-PB-114-C-12-14-N	558593	12	14	Y	12	14																
A1-PB-114-C	A1-PB-114-C-14-16-N	558593	14	16	Y	14	16																
A1-PB-114-C	A1-PB-114-C-16-18-N	558593	16	18	Y	16	18																
A1-PB-114-D	A1-PB-114-D-0.5-1-N	573035	0.5	1	N	0.5	1																
A1-PB-114-D	A1-PB-114-D-1-1.5-N	573035	1	1.5	N	1	1.5																
A1-PB-114-D	A1-PB-114-D-2-4-N	573035	2	4	Y	2	4																
A1-PB-114-D	A1-PB-114-D-4-6-N	573035	4	6	Y	4	6																

TABLE A10-1 SUMMARY OF ANALYTICAL RESULTS

Location ID	SYS SAMPLE CODE	SDG	Start Depth	End Depth	CHEMICAL_NAME RESULT_UNIT			LEAD-210 pci/g				LEAD-212 pci/g				LEAD-214 pci/g				POTASSIUM-40 pci/g			
					Composite (Y/N)	Start Depth Below DID	End Depth Below DID	RESULT	QUALIFIERS	RESULT ERROR DELTA	MDL	RESULT	QUALIFIERS	RESULT ERROR DELTA	MDL	RESULT	QUALIFIERS	RESULT ERROR DELTA	MDL	RESULT	QUALIFIERS	RESULT ERROR DELTA	MDL
A1-PB-113	A1-PB-113-0.5-1-N	526807	0.5	1	N	0.5	1																
A1-PB-113	A1-PB-113-1-1.5-N	526807	1	1.5	N	1	1.5																
A1-PB-113	A1-PB-113-2-4-N	526807	2	4	Y	2	4																
A1-PB-113	A1-PB-113-4-6-N	526807	4	6	Y	4	6																
A1-PB-113	A1-PB-113-6-8-N	526807	6	8	Y	6	8																
A1-PB-113	A1-PB-113-8-10-N	526807	8	10	Y	8	10																
A1-PB-113	A1-PB-113-10-12-N	527036	10	12	Y	10	12																
A1-PB-113	A1-PB-113-12-14-N	527036	12	14	Y	12	14																
A1-PB-113	A1-PB-113-14-16-N	527036	14	16	Y	14	16																
A1-PB-113	A1-PB-113-16-18-N	527036	16	18	Y	16	18																
A1-PB-113	A1-PB-113-18-20-N	527036	18	20	Y	18	20																
A1-PB-113	A1-PB-113-20-22-N	527036	20	22	Y	20	22																
A1-PB-113	A1-PB-113-22-24-N	527036	22	24	Y	22	24																
A1-PB-113	A1-PB-113-24-25-N	527036	24	25	Y	24	25																
A1-PB-114-A	A1-PB-114-A-0-1-N	530226	0	1	N	0	1																
A1-PB-114-A	A1-PB-114-A-1-2-N	530226	1	2	N	1	2																
A1-PB-114-A	A1-PB-114-A-2-4-N	530226	2	4	Y	2	4																
A1-PB-114-A	A1-PB-114-A-4-6-N	530226	4	6	Y	4	6																
A1-PB-114-A	A1-PB-114-A-6-8-N	530226	6	8	Y	6	8																
A1-PB-114-A	A1-PB-114-A-8-10-N	530226	8	10	Y	8	10																
A1-PB-114-A	A1-PB-114-A-10-12-N	530226	10	12	Y	10	12																
A1-PB-114-A	A1-PB-114-A-12-14-N	530226	12	14	Y	12	14																
A1-PB-114-A	A1-PB-114-A-14-16-N	530226	14	16	Y	14	16																
A1-PB-114-A	A1-PB-114-A-16-18-N	530226	16	18	Y	16	18																
A1-PB-114-A	A1-PB-114-A-18-20-N	530226	18	20	Y	18	20																
A1-PB-114-A	A1-PB-114-A-20-22-N	530226	20	22	Y	20	22																
A1-PB-114-B	A1-PB-114-B-0-0.5-N	558206	0	0.5	N	0	0.5																
A1-PB-114-B	A1-PB-114-B-1.5-1.7-N	558206	1.5	1.7	N	1.5	1.7																
A1-PB-114-B	A1-PB-114-B-2-4-N	558206	2	4	Y	2	4																
A1-PB-114-B	A1-PB-114-B-4-6-N	558206	4	6	Y	4	6																
A1-PB-114-B	A1-PB-114-B-6-8-N	558206	6	8	Y	6	8																
A1-PB-114-B	A1-PB-114-B-8-10-N	558206	8	10	Y	8	10																
A1-PB-114-B	A1-PB-114-B-10-12-N	558206	10	12	Y	10	12																
A1-PB-114-B	A1-PB-114-B-12-14-N	558206	12	14	Y	12	14																
A1-PB-114-B	A1-PB-114-B-14-16-N	558206	14	16	Y	14	16																
A1-PB-114-B	A1-PB-114-B-16-18-N	558206	16	18	Y	16	18																
A1-PB-114-B	A1-PB-114-B-18-20-N	558206	18	20	Y	18	20																
A1-PB-114-C	A1-PB-114-C-0-0.5-N	558593	0	0.5	N	0	0.5																
A1-PB-114-C	A1-PB-114-C-1.5-1.7-N	558593	1.5	1.7	N	1.5	1.7																
A1-PB-114-C	A1-PB-114-C-2-4-N	558593	2	4	Y	2	4																
A1-PB-114-C	A1-PB-114-C-4-6-N	558593	4	6	Y	4	6																
A1-PB-114-C	A1-PB-114-C-6-8-N	558593	6	8	Y	6	8																
A1-PB-114-C	A1-PB-114-C-8-10-N	558593	8	10	Y	8	10																
A1-PB-114-C	A1-PB-114-C-10-12-N	558593	10	12	Y	10	12																
A1-PB-114-C	A1-PB-114-C-12-14-N	558593	12	14	Y	12	14																
A1-PB-114-C	A1-PB-114-C-14-16-N	558593	14	16	Y	14	16																
A1-PB-114-C	A1-PB-114-C-16-18-N	558593	16	18	Y	16	18																
A1-PB-114-D	A1-PB-114-D-0.5-1-N	573035	0.5	1	N	0.5	1																
A1-PB-114-D	A1-PB-114-D-1-1.5-N	573035	1	1.5	N	1	1.5																
A1-PB-114-D	A1-PB-114-D-2-4-N	573035	2	4	Y	2	4																
A1-PB-114-D	A1-PB-114-D-4-6-N	573035	4	6	Y	4	6																



TABLE A10-1 SUMMARY OF ANALYTICAL RESULTS

Location ID	SYS SAMPLE CODE	SDG	Start Depth	End Depth	CHEMICAL_NAME RESULT_UNIT			PROTACTINIUM 231 pci/g				RADIUM-223 pci/g				RADIUM-224 pci/g				RADIUM-226 pci/g				
					Composite (Y/N)	Start Depth Below DID	End Depth Below DID	RESULT	QUALIFIERS	RESULT ERROR DELTA	MDL	RESULT	QUALIFIERS	RESULT ERROR DELTA	MDL	RESULT	QUALIFIERS	RESULT ERROR DELTA	MDL	RESULT	QUALIFIERS	RESULT ERROR DELTA	MDL	
A1-PB-113	A1-PB-113-0.5-1-N	526807	0.5	1	N	0.5	1														0.73		0.172	0.121
A1-PB-113	A1-PB-113-1-1.5-N	526807	1	1.5	N	1	1.5														0.839		0.142	0.103
A1-PB-113	A1-PB-113-2-4-N	526807	2	4	Y	2	4														1.06		0.159	0.0861
A1-PB-113	A1-PB-113-4-6-N	526807	4	6	Y	4	6														1.15		0.151	0.0729
A1-PB-113	A1-PB-113-6-8-N	526807	6	8	Y	6	8														0.983		0.117	0.0971
A1-PB-113	A1-PB-113-8-10-N	526807	8	10	Y	8	10														0.731		0.141	0.0868
A1-PB-113	A1-PB-113-10-12-N	527036	10	12	Y	10	12														1.17		0.157	0.0946
A1-PB-113	A1-PB-113-12-14-N	527036	12	14	Y	12	14														0.956		0.167	0.11
A1-PB-113	A1-PB-113-14-16-N	527036	14	16	Y	14	16														1.17		0.138	0.0915
A1-PB-113	A1-PB-113-16-18-N	527036	16	18	Y	16	18														0.769		0.128	0.066
A1-PB-113	A1-PB-113-18-20-N	527036	18	20	Y	18	20														0.813		0.12	0.0772
A1-PB-113	A1-PB-113-20-22-N	527036	20	22	Y	20	22														0.817		0.11	0.0772
A1-PB-113	A1-PB-113-22-24-N	527036	22	24	Y	22	24														0.488		0.102	0.0612
A1-PB-113	A1-PB-113-24-25-N	527036	24	25	Y	24	25														0.784		0.114	0.0717
A1-PB-114-A	A1-PB-114-A-0-1-N	530226	0	1	N	0	1														0.984		0.14	0.0862
A1-PB-114-A	A1-PB-114-A-1-2-N	530226	1	2	N	1	2														0.857	J-	0.105	0.0667
A1-PB-114-A	A1-PB-114-A-2-4-N	530226	2	4	Y	2	4														1.28		0.159	0.0891
A1-PB-114-A	A1-PB-114-A-4-6-N	530226	4	6	Y	4	6														1.09		0.164	0.0939
A1-PB-114-A	A1-PB-114-A-6-8-N	530226	6	8	Y	6	8														1.51		0.167	0.0904
A1-PB-114-A	A1-PB-114-A-8-10-N	530226	8	10	Y	8	10														1.37		0.176	0.096
A1-PB-114-A	A1-PB-114-A-10-12-N	530226	10	12	Y	10	12														1.11		0.143	0.0933
A1-PB-114-A	A1-PB-114-A-12-14-N	530226	12	14	Y	12	14														1.07		0.148	0.0771
A1-PB-114-A	A1-PB-114-A-14-16-N	530226	14	16	Y	14	16														1.15		0.138	0.087
A1-PB-114-A	A1-PB-114-A-16-18-N	530226	16	18	Y	16	18														0.834		0.118	0.0666
A1-PB-114-A	A1-PB-114-A-18-20-N	530226	18	20	Y	18	20														0.554		0.104	0.074
A1-PB-114-A	A1-PB-114-A-20-22-N	530226	20	22	Y	20	22														0.485		0.117	0.0808
A1-PB-114-B	A1-PB-114-B-0-0.5-N	558206	0	0.5	N	0	0.5														1.01		0.157	0.096
A1-PB-114-B	A1-PB-114-B-1.5-1.7-N	558206	1.5	1.7	N	1.5	1.7														1.2		0.21	0.126
A1-PB-114-B	A1-PB-114-B-2-4-N	558206	2	4	Y	2	4														1.24		0.239	0.134
A1-PB-114-B	A1-PB-114-B-4-6-N	558206	4	6	Y	4	6														1.04		0.206	0.133
A1-PB-114-B	A1-PB-114-B-6-8-N	558206	6	8	Y	6	8														1.29		0.215	0.123
A1-PB-114-B	A1-PB-114-B-8-10-N	558206	8	10	Y	8	10														1.04		0.198	0.13
A1-PB-114-B	A1-PB-114-B-10-12-N	558206	10	12	Y	10	12														1.14		0.205	0.128
A1-PB-114-B	A1-PB-114-B-12-14-N	558206	12	14	Y	12	14														1.25		0.213	0.122
A1-PB-114-B	A1-PB-114-B-14-16-N	558206	14	16	Y	14	16														1.16		0.187	0.131
A1-PB-114-B	A1-PB-114-B-16-18-N	558206	16	18	Y	16	18														0.865		0.155	0.116
A1-PB-114-B	A1-PB-114-B-18-20-N	558206	18	20	Y	18	20														0.809		0.14	0.0984
A1-PB-114-C	A1-PB-114-C-0-0.5-N	558593	0	0.5	N	0	0.5														1.11		0.126	0.0714
A1-PB-114-C	A1-PB-114-C-1.5-1.7-N	558593	1.5	1.7	N	1.5	1.7														0.877		0.261	0.145
A1-PB-114-C	A1-PB-114-C-2-4-N	558593	2	4	Y	2	4														1.19		0.148	0.099
A1-PB-114-C	A1-PB-114-C-4-6-N	558593	4	6	Y	4	6														1.22		0.173	0.116
A1-PB-114-C	A1-PB-114-C-6-8-N	558593	6	8	Y	6	8														1.18		0.158	0.0892
A1-PB-114-C	A1-PB-114-C-8-10-N	558593	8	10	Y	8	10														1.33		0.187	0.12
A1-PB-114-C	A1-PB-114-C-10-12-N	558593	10	12	Y	10	12														1.28		0.129	0.0789
A1-PB-114-C	A1-PB-114-C-12-14-N	558593	12	14	Y	12	14														1.18		0.182	0.122
A1-PB-114-C	A1-PB-114-C-14-16-N	558593	14	16	Y	14	16														1.09		0.185	0.102
A1-PB-114-C	A1-PB-114-C-16-18-N	558593	16	18	Y	16	18														0.863		0.134	0.0896
A1-PB-114-D	A1-PB-114-D-0.5-1-N	573035	0.5	1	N	0.5	1														1.04		0.154	0.106
A1-PB-114-D	A1-PB-114-D-1-1.5-N	573035	1	1.5	N	1	1.5														0.937		0.121	0.0717
A1-PB-114-D	A1-PB-114-D-2-4-N	573035	2	4	Y	2	4														1.11		0.161	0.104
A1-PB-114-D	A1-PB-114-D-4-6-N	573035	4	6	Y	4	6														0.907		0.136	0.0873

TABLE A10-1 SUMMARY OF ANALYTICAL RESULTS

Location ID	SYS SAMPLE CODE	SDG	Start Depth	End Depth	CHEMICAL_NAME RESULT_UNIT			RADIUM-228 pci/g				THALLIUM-208 pci/g				THORIUM-228 pci/g				THORIUM-230 pci/g		
					Composite (Y/N)	Start Depth Below DID	End Depth Below DID	RESULT	QUALIFIERS	RESULT ERROR DELTA	MDL	RESULT	QUALIFIERS	RESULT_ERR OR_DELTA	MDL	RESULT	QUALIFIERS	RESULT ERROR DELTA	MDL	RESULT	QUALIFIERS	RESULT ERROR DELTA
A1-PB-113	A1-PB-113-0.5-1-N	526807	0.5	1	N	0.5	1	1.35		0.358	0.227									1.4		0.401
A1-PB-113	A1-PB-113-1-1.5-N	526807	1	1.5	N	1	1.5	0.872		0.284	0.205									1.15		0.381
A1-PB-113	A1-PB-113-2-4-N	526807	2	4	Y	2	4	0.922		0.261	0.174									2.06		0.664
A1-PB-113	A1-PB-113-4-6-N	526807	4	6	Y	4	6	1.15		0.29	0.214									1.52		0.435
A1-PB-113	A1-PB-113-6-8-N	526807	6	8	Y	6	8	0.924		0.196	0.168									2.58		0.597
A1-PB-113	A1-PB-113-8-10-N	526807	8	10	Y	8	10	0.428		0.215	0.183									0.559	J	0.237
A1-PB-113	A1-PB-113-10-12-N	527036	10	12	Y	10	12	1.15		0.272	0.204									4.55		0.689
A1-PB-113	A1-PB-113-12-14-N	527036	12	14	Y	12	14	0.889		0.312	0.238									3.36		0.636
A1-PB-113	A1-PB-113-14-16-N	527036	14	16	Y	14	16	1.35		0.246	0.163									1.47		0.324
A1-PB-113	A1-PB-113-16-18-N	527036	16	18	Y	16	18	0.895		0.211	0.12									0.794		0.226
A1-PB-113	A1-PB-113-18-20-N	527036	18	20	Y	18	20	1.04		0.228	0.123									1.19		0.302
A1-PB-113	A1-PB-113-20-22-N	527036	20	22	Y	20	22	0.928		0.202	0.157									1.04		0.281
A1-PB-113	A1-PB-113-22-24-N	527036	22	24	Y	22	24	0.728		0.183	0.118									0.532		0.253
A1-PB-113	A1-PB-113-24-25-N	527036	24	25	Y	24	25	0.87		0.2	0.139									0.68		0.225
A1-PB-114-A	A1-PB-114-A-0-1-N	530226	0	1	N	0	1	1.23		0.237	0.161									0.909		0.314
A1-PB-114-A	A1-PB-114-A-1-2-N	530226	1	2	N	1	2	1.26		0.171	0.148									1.25		0.344
A1-PB-114-A	A1-PB-114-A-2-4-N	530226	2	4	Y	2	4	1.39		0.31	0.166									1.47		0.341
A1-PB-114-A	A1-PB-114-A-4-6-N	530226	4	6	Y	4	6	1.04		0.236	0.192									1.64		0.395
A1-PB-114-A	A1-PB-114-A-6-8-N	530226	6	8	Y	6	8	0.926		0.267	0.19									13.5		1.26
A1-PB-114-A	A1-PB-114-A-8-10-N	530226	8	10	Y	8	10	1.13		0.231	0.172									15.9		1.18
A1-PB-114-A	A1-PB-114-A-10-12-N	530226	10	12	Y	10	12	1.16		0.295	0.193									3.76		0.564
A1-PB-114-A	A1-PB-114-A-12-14-N	530226	12	14	Y	12	14	1.26		0.248	0.172									2.14		0.427
A1-PB-114-A	A1-PB-114-A-14-16-N	530226	14	16	Y	14	16	1.16		0.263	0.14									1.54		0.387
A1-PB-114-A	A1-PB-114-A-16-18-N	530226	16	18	Y	16	18	0.955		0.191	0.132									0.93		0.279
A1-PB-114-A	A1-PB-114-A-18-20-N	530226	18	20	Y	18	20	0.649		0.174	0.161									0.81		0.281
A1-PB-114-A	A1-PB-114-A-20-22-N	530226	20	22	Y	20	22	0.688		0.243	0.16									0.617		0.216
A1-PB-114-B	A1-PB-114-B-0-0.5-N	558206	0	0.5	N	0	0.5	0.752		0.357	0.256									1.68		0.322
A1-PB-114-B	A1-PB-114-B-1.5-1.7-N	558206	1.5	1.7	N	1.5	1.7	1.27		0.291	0.246									0.985		0.27
A1-PB-114-B	A1-PB-114-B-2-4-N	558206	2	4	Y	2	4	0.887		0.488	0.386									1.31		0.308
A1-PB-114-B	A1-PB-114-B-4-6-N	558206	4	6	Y	4	6	1.09		0.378	0.336									1.37		0.353
A1-PB-114-B	A1-PB-114-B-6-8-N	558206	6	8	Y	6	8	0.784		0.418	0.28									11.3		0.979
A1-PB-114-B	A1-PB-114-B-8-10-N	558206	8	10	Y	8	10	1.09		0.295	0.284									1.25		0.302
A1-PB-114-B	A1-PB-114-B-10-12-N	558206	10	12	Y	10	12	1.15		0.435	0.259									1.37		0.281
A1-PB-114-B	A1-PB-114-B-12-14-N	558206	12	14	Y	12	14	1.29		0.325	0.288									1.2		0.312
A1-PB-114-B	A1-PB-114-B-14-16-N	558206	14	16	Y	14	16	1.12		0.299	0.27									1.07		0.296
A1-PB-114-B	A1-PB-114-B-16-18-N	558206	16	18	Y	16	18	0.988		0.316	0.233									0.666		0.185
A1-PB-114-B	A1-PB-114-B-18-20-N	558206	18	20	Y	18	20	0.903		0.35	0.171									1.09		0.252
A1-PB-114-C	A1-PB-114-C-0-0.5-N	558593	0	0.5	N	0	0.5	1.22		0.202	0.139									1.39		0.245
A1-PB-114-C	A1-PB-114-C-1.5-1.7-N	558593	1.5	1.7	N	1.5	1.7	0.671		0.292	0.606									1.03		0.225
A1-PB-114-C	A1-PB-114-C-2-4-N	558593	2	4	Y	2	4	1.16		0.256	0.172									1.34		0.267
A1-PB-114-C	A1-PB-114-C-4-6-N	558593	4	6	Y	4	6	1.16		0.334	0.213									0.977		0.209
A1-PB-114-C	A1-PB-114-C-6-8-N	558593	6	8	Y	6	8	1.3		0.264	0.19									5.57		0.474
A1-PB-114-C	A1-PB-114-C-8-10-N	558593	8	10	Y	8	10	1.51		0.322	0.24									1.88		0.337
A1-PB-114-C	A1-PB-114-C-10-12-N	558593	10	12	Y	10	12	0.973		0.235	0.19									3.22		0.333
A1-PB-114-C	A1-PB-114-C-12-14-N	558593	12	14	Y	12	14	1.71		0.341	0.276									1.87		0.271
A1-PB-114-C	A1-PB-114-C-14-16-N	558593	14	16	Y	14	16	1.15		0.339	0.226									1.53		0.272
A1-PB-114-C	A1-PB-114-C-16-18-N	558593	16	18	Y	16	18	0.88		0.24	0.182									0.695		0.151
A1-PB-114-D	A1-PB-114-D-0.5-1-N	573035	0.5	1	N	0.5	1	1.24		0.245	0.162									1.42		0.242
A1-PB-114-D	A1-PB-114-D-1-1.5-N	573035	1	1.5	N	1	1.5	1.27		0.267	0.152									1.48		0.243
A1-PB-114-D	A1-PB-114-D-2-4-N	573035	2	4	Y	2	4	0.926		0.231	0.215									1.23		0.258
A1-PB-114-D	A1-PB-114-D-4-6-N	573035	4	6	Y	4	6	0.722		0.234	0.164									2.45		0.397

TABLE A10-1 SUMMARY OF ANALYTICAL RESULTS

Location ID	SYS SAMPLE CODE	SDG	Start Depth	End Depth	Composite (Y/N)	Start Depth Below DID	End Depth Below DID	CHEMICAL_NAME
								RESULT_UNIT
MDL								
A1-PB-113	A1-PB-113-0.5-1-N	526807	0.5	1	N	0.5	1	0.255
A1-PB-113	A1-PB-113-1-1.5-N	526807	1	1.5	N	1	1.5	0.256
A1-PB-113	A1-PB-113-2-4-N	526807	2	4	Y	2	4	0.408
A1-PB-113	A1-PB-113-4-6-N	526807	4	6	Y	4	6	0.275
A1-PB-113	A1-PB-113-6-8-N	526807	6	8	Y	6	8	0.307
A1-PB-113	A1-PB-113-8-10-N	526807	8	10	Y	8	10	0.227
A1-PB-113	A1-PB-113-10-12-N	527036	10	12	Y	10	12	0.231
A1-PB-113	A1-PB-113-12-14-N	527036	12	14	Y	12	14	0.208
A1-PB-113	A1-PB-113-14-16-N	527036	14	16	Y	14	16	0.165
A1-PB-113	A1-PB-113-16-18-N	527036	16	18	Y	16	18	0.139
A1-PB-113	A1-PB-113-18-20-N	527036	18	20	Y	18	20	0.182
A1-PB-113	A1-PB-113-20-22-N	527036	20	22	Y	20	22	0.159
A1-PB-113	A1-PB-113-22-24-N	527036	22	24	Y	22	24	0.212
A1-PB-113	A1-PB-113-24-25-N	527036	24	25	Y	24	25	0.153
A1-PB-114-A	A1-PB-114-A-0-1-N	530226	0	1	N	0	1	0.247
A1-PB-114-A	A1-PB-114-A-1-2-N	530226	1	2	N	1	2	0.217
A1-PB-114-A	A1-PB-114-A-2-4-N	530226	2	4	Y	2	4	0.177
A1-PB-114-A	A1-PB-114-A-4-6-N	530226	4	6	Y	4	6	0.17
A1-PB-114-A	A1-PB-114-A-6-8-N	530226	6	8	Y	6	8	0.296
A1-PB-114-A	A1-PB-114-A-8-10-N	530226	8	10	Y	8	10	0.232
A1-PB-114-A	A1-PB-114-A-10-12-N	530226	10	12	Y	10	12	0.24
A1-PB-114-A	A1-PB-114-A-12-14-N	530226	12	14	Y	12	14	0.199
A1-PB-114-A	A1-PB-114-A-14-16-N	530226	14	16	Y	14	16	0.174
A1-PB-114-A	A1-PB-114-A-16-18-N	530226	16	18	Y	16	18	0.181
A1-PB-114-A	A1-PB-114-A-18-20-N	530226	18	20	Y	18	20	0.231
A1-PB-114-A	A1-PB-114-A-20-22-N	530226	20	22	Y	20	22	0.143
A1-PB-114-B	A1-PB-114-B-0-0.5-N	558206	0	0.5	N	0	0.5	0.258
A1-PB-114-B	A1-PB-114-B-1.5-1.7-N	558206	1.5	1.7	N	1.5	1.7	0.303
A1-PB-114-B	A1-PB-114-B-2-4-N	558206	2	4	Y	2	4	0.305
A1-PB-114-B	A1-PB-114-B-4-6-N	558206	4	6	Y	4	6	0.264
A1-PB-114-B	A1-PB-114-B-6-8-N	558206	6	8	Y	6	8	0.474
A1-PB-114-B	A1-PB-114-B-8-10-N	558206	8	10	Y	8	10	0.298
A1-PB-114-B	A1-PB-114-B-10-12-N	558206	10	12	Y	10	12	0.236
A1-PB-114-B	A1-PB-114-B-12-14-N	558206	12	14	Y	12	14	0.34
A1-PB-114-B	A1-PB-114-B-14-16-N	558206	14	16	Y	14	16	0.339
A1-PB-114-B	A1-PB-114-B-16-18-N	558206	16	18	Y	16	18	0.182
A1-PB-114-B	A1-PB-114-B-18-20-N	558206	18	20	Y	18	20	0.242
A1-PB-114-C	A1-PB-114-C-0-0.5-N	558593	0	0.5	N	0	0.5	0.179
A1-PB-114-C	A1-PB-114-C-1.5-1.7-N	558593	1.5	1.7	N	1.5	1.7	0.181
A1-PB-114-C	A1-PB-114-C-2-4-N	558593	2	4	Y	2	4	0.211
A1-PB-114-C	A1-PB-114-C-4-6-N	558593	4	6	Y	4	6	0.171
A1-PB-114-C	A1-PB-114-C-6-8-N	558593	6	8	Y	6	8	0.156
A1-PB-114-C	A1-PB-114-C-8-10-N	558593	8	10	Y	8	10	0.218
A1-PB-114-C	A1-PB-114-C-10-12-N	558593	10	12	Y	10	12	0.121
A1-PB-114-C	A1-PB-114-C-12-14-N	558593	12	14	Y	12	14	0.166
A1-PB-114-C	A1-PB-114-C-14-16-N	558593	14	16	Y	14	16	0.185
A1-PB-114-C	A1-PB-114-C-16-18-N	558593	16	18	Y	16	18	0.14
A1-PB-114-D	A1-PB-114-D-0.5-1-N	573035	0.5	1	N	0.5	1	0.157
A1-PB-114-D	A1-PB-114-D-1-1.5-N	573035	1	1.5	N	1	1.5	0.147
A1-PB-114-D	A1-PB-114-D-2-4-N	573035	2	4	Y	2	4	0.211
A1-PB-114-D	A1-PB-114-D-4-6-N	573035	4	6	Y	4	6	0.255

TABLE A10-1 SUMMARY OF ANALYTICAL RESULTS

Location ID	SYS SAMPLE CODE	SDG	Start Depth	End Depth	CHEMICAL_NAME RESULT_UNIT			THORIUM-232 pci/g				THORIUM-234 pci/g				TOTAL RADIUM pci/g				Total Thorium pci/g			
					Composite (Y/N)	Start Depth Below DID	End Depth Below DID	RESULT	QUALIFIERS	RESULT ERROR DELTA	MDL	RESULT	QUALIFIERS	RESULT ERROR DELTA	MDL	RESULT	QUALIFIERS	RESULT ERROR DELTA	MDL	RESULT	QUALIFIERS	RESULT ERROR DELTA	MDL
A1-PB-113	A1-PB-113-0.5-1-N	526807	0.5	1	N	0.5	1	1.24		0.374	0.22				2.08		0.530	0.227	2.64		0.775	0.22	
A1-PB-113	A1-PB-113-1-1.5-N	526807	1	1.5	N	1	1.5	0.827		0.314	0.119				1.711		0.426	0.205	1.977		0.695	0.119	
A1-PB-113	A1-PB-113-2-4-N	526807	2	4	Y	2	4	1.17		0.493	0.191				1.982		0.42	0.174	3.23		1.157	0.191	
A1-PB-113	A1-PB-113-4-6-N	526807	4	6	Y	4	6	0.781		0.318	0.239				2.3		0.441	0.214	2.301		0.753	0.239	
A1-PB-113	A1-PB-113-6-8-N	526807	6	8	Y	6	8	0.773		0.336	0.241				1.907		0.313	0.168	3.353		0.933	0.241	
A1-PB-113	A1-PB-113-8-10-N	526807	8	10	Y	8	10	0.0336	UJ	0.178	0.309				1.159		0.356	0.183	0.5926	J	0.415	0.309	
A1-PB-113	A1-PB-113-10-12-N	527036	10	12	Y	10	12	1		0.325	0.107				2.32		0.429	0.204	5.55		1.014	0.107	
A1-PB-113	A1-PB-113-12-14-N	527036	12	14	Y	12	14	1.23		0.39	0.184				1.845		0.479	0.238	4.59		1.026	0.184	
A1-PB-113	A1-PB-113-14-16-N	527036	14	16	Y	14	16	1.05	J	0.268	0.075				2.52		0.384	0.163	2.52	J	0.592	0.075	
A1-PB-113	A1-PB-113-16-18-N	527036	16	18	Y	16	18	0.883	J	0.23	0.0671				1.664		0.339	0.12	1.677	J	0.456	0.0671	
A1-PB-113	A1-PB-113-18-20-N	527036	18	20	Y	18	20	0.981	J	0.265	0.0775				1.853		0.348	0.123	2.171	J	0.567	0.0775	
A1-PB-113	A1-PB-113-20-22-N	527036	20	22	Y	20	22	0.842		0.251	0.133				1.745		0.312	0.157	1.882		0.532	0.133	
A1-PB-113	A1-PB-113-22-24-N	527036	22	24	Y	22	24	0.821		0.303	0.191				1.216		0.285	0.118	1.353		0.556	0.191	
A1-PB-113	A1-PB-113-24-25-N	527036	24	25	Y	24	25	0.993		0.262	0.107				1.654		0.314	0.139	1.673		0.487	0.107	
A1-PB-114-A	A1-PB-114-A-0-1-N	530226	0	1	N	0	1	1.07	J	0.32	0.0995				2.214		0.377	0.161	1.979	J	0.634	0.0995	
A1-PB-114-A	A1-PB-114-A-1-2-N	530226	1	2	N	1	2	0.837		0.276	0.136				2.117	J	0.276	0.148	2.087		0.620	0.136	
A1-PB-114-A	A1-PB-114-A-2-4-N	530226	2	4	Y	2	4	0.855		0.258	0.118				2.67		0.469	0.166	2.325		0.599	0.118	
A1-PB-114-A	A1-PB-114-A-4-6-N	530226	4	6	Y	4	6	0.938		0.301	0.144				2.13		0.4	0.192	2.578		0.696	0.144	
A1-PB-114-A	A1-PB-114-A-6-8-N	530226	6	8	Y	6	8	0.835		0.333	0.264				2.436		0.434	0.19	14.335		1.593	0.264	
A1-PB-114-A	A1-PB-114-A-8-10-N	530226	8	10	Y	8	10	0.598		0.25	0.216				2.5		0.407	0.172	16.498		1.43	0.216	
A1-PB-114-A	A1-PB-114-A-10-12-N	530226	10	12	Y	10	12	1.08		0.31	0.2				2.27		0.438	0.193	4.84		0.874	0.2	
A1-PB-114-A	A1-PB-114-A-12-14-N	530226	12	14	Y	12	14	1.28		0.33	0.152				2.33		0.396	0.172	3.42		0.757	0.152	
A1-PB-114-A	A1-PB-114-A-14-16-N	530226	14	16	Y	14	16	0.964		0.304	0.0986				2.31		0.401	0.14	2.504		0.691	0.0986	
A1-PB-114-A	A1-PB-114-A-16-18-N	530226	16	18	Y	16	18	0.727		0.239	0.0828				1.789		0.309	0.132	1.657		0.518	0.0828	
A1-PB-114-A	A1-PB-114-A-18-20-N	530226	18	20	Y	18	20	0.768		0.266	0.189				1.203		0.278	0.161	1.578		0.547	0.189	
A1-PB-114-A	A1-PB-114-A-20-22-N	530226	20	22	Y	20	22	0.645		0.216	0.109				1.173		0.36	0.16	1.262		0.432	0.109	
A1-PB-114-B	A1-PB-114-B-0-0.5-N	558206	0	0.5	N	0	0.5	0.962		0.245	0.205				1.762		0.514	0.256	2.642		0.567	0.205	
A1-PB-114-B	A1-PB-114-B-1.5-1.7-N	558206	1.5	1.7	N	1.5	1.7	0.868		0.219	0.167				2.47		0.501	0.246	1.853		0.489	0.167	
A1-PB-114-B	A1-PB-114-B-2-4-N	558206	2	4	Y	2	4	1.35		0.271	0.109				2.127		0.727	0.386	2.66		0.579	0.109	
A1-PB-114-B	A1-PB-114-B-4-6-N	558206	4	6	Y	4	6	1.37		0.345	0.226				2.13		0.584	0.336	2.74		0.698	0.226	
A1-PB-114-B	A1-PB-114-B-6-8-N	558206	6	8	Y	6	8	1		0.33	0.334				2.074		0.633	0.28	12.3		1.309	0.334	
A1-PB-114-B	A1-PB-114-B-8-10-N	558206	8	10	Y	8	10	1.05		0.244	0.134				2.13		0.493	0.284	2.3		0.546	0.134	
A1-PB-114-B	A1-PB-114-B-10-12-N	558206	10	12	Y	10	12	1.04		0.227	0.119				2.29		0.64	0.259	2.41		0.508	0.119	
A1-PB-114-B	A1-PB-114-B-12-14-N	558206	12	14	Y	12	14	0.981		0.257	0.226				2.54		0.538	0.288	2.181		0.569	0.226	
A1-PB-114-B	A1-PB-114-B-14-16-N	558206	14	16	Y	14	16	1.07		0.256	0.205				2.28		0.486	0.27	2.14		0.552	0.205	
A1-PB-114-B	A1-PB-114-B-16-18-N	558206	16	18	Y	16	18	0.74		0.172	0.0794				1.853		0.471	0.233	1.406		0.357	0.0794	
A1-PB-114-B	A1-PB-114-B-18-20-N	558206	18	20	Y	18	20	1.01		0.216	0.111				1.712		0.49	0.171	2.1		0.468	0.111	
A1-PB-114-C	A1-PB-114-C-0-0.5-N	558593	0	0.5	N	0	0.5	1.03		0.201	0.0955				2.33		0.328	0.139	2.42		0.446	0.0955	
A1-PB-114-C	A1-PB-114-C-1.5-1.7-N	558593	1.5	1.7	N	1.5	1.7	0.855		0.198	0.133				1.548		0.553	0.606	1.885		0.423	0.133	
A1-PB-114-C	A1-PB-114-C-2-4-N	558593	2	4	Y	2	4	1.27		0.241	0.0926				2.35		0.404	0.172	2.61		0.508	0.0926	
A1-PB-114-C	A1-PB-114-C-4-6-N	558593	4	6	Y	4	6	1.01		0.2	0.108				2.38		0.507	0.213	1.987		0.409	0.108	
A1-PB-114-C	A1-PB-114-C-6-8-N	558593	6	8	Y	6	8	0.941		0.202	0.127				2.48		0.422	0.19	6.511		0.676	0.127	
A1-PB-114-C	A1-PB-114-C-8-10-N	558593	8	10	Y	8	10	1.54		0.303	0.189				2.84		0.509	0.24	3.42		0.64	0.189	
A1-PB-114-C	A1-PB-114-C-10-12-N	558593	10	12	Y	10	12	0.936		0.181	0.0859				2.253		0.364	0.19	4.156		0.514	0.0859	
A1-PB-114-C	A1-PB-114-C-12-14-N	558593	12	14	Y	12	14	1.5		0.232	0.0748				2.89		0.523	0.276	3.37		0.503	0.0748	
A1-PB-114-C	A1-PB-114-C-14-16-N	558593	14	16	Y	14	16	1.1		0.224	0.125				2.24		0.524	0.226	2.63		0.496	0.125	
A1-PB-114-C	A1-PB-114-C-16-18-N	558593	16	18	Y	16	18	0.641		0.134	0.0894				1.743		0.374	0.182	1.336		0.285	0.0894	
A1-PB-114-D	A1-PB-114-D-0.5-1-N	573035	0.5	1	N	0.5	1	0.966		0.197	0.12				2.28		0.399		2.39		0.439		
A1-PB-114-D	A1-PB-114-D-1-1.5-N	573035	1	1.5	N	1	1.5	1.2		0.212	0.0928				2.21		0.388		2.68		0.455		
A1-PB-114-D	A1-PB-114-D-2-4-N	573035	2	4	Y	2	4	1.1		0.226	0.0929				2.04		0.392		2.33		0.484		
A1-PB-114-D	A1-PB-114-D-4-6-N	573035	4	6	Y	4	6	0.931		0.238	0.118				1.63		0.370		3.38		0.635		

TABLE A10-1 SUMMARY OF ANALYTICAL RESULTS

Location ID	SYS SAMPLE CODE	SDG	Start Depth	End Depth	CHEMICAL_NAME RESULT_UNIT			URANIUM pci/g				URANIUM 233 AND 234 pci/g				URANIUM 235 AND 236 pci/g				URANIUM-234 pci/g			
					Composite (Y/N)	Start Depth Below DID	End Depth Below DID	RESULT	QUALIFIERS	RESULT ERROR DELTA	MDL	RESULT	QUALIFIERS	RESULT ERROR DELTA	MDL	RESULT	QUALIFIERS	RESULT ERROR DELTA	MDL	RESULT	QUALIFIERS	RESULT ERROR DELTA	MDL
A1-PB-113	A1-PB-113-0.5-1-N	526807	0.5	1	N	0.5	1																
A1-PB-113	A1-PB-113-1-1.5-N	526807	1	1.5	N	1	1.5																
A1-PB-113	A1-PB-113-2-4-N	526807	2	4	Y	2	4																
A1-PB-113	A1-PB-113-4-6-N	526807	4	6	Y	4	6																
A1-PB-113	A1-PB-113-6-8-N	526807	6	8	Y	6	8																
A1-PB-113	A1-PB-113-8-10-N	526807	8	10	Y	8	10																
A1-PB-113	A1-PB-113-10-12-N	527036	10	12	Y	10	12																
A1-PB-113	A1-PB-113-12-14-N	527036	12	14	Y	12	14																
A1-PB-113	A1-PB-113-14-16-N	527036	14	16	Y	14	16																
A1-PB-113	A1-PB-113-16-18-N	527036	16	18	Y	16	18																
A1-PB-113	A1-PB-113-18-20-N	527036	18	20	Y	18	20																
A1-PB-113	A1-PB-113-20-22-N	527036	20	22	Y	20	22																
A1-PB-113	A1-PB-113-22-24-N	527036	22	24	Y	22	24																
A1-PB-113	A1-PB-113-24-25-N	527036	24	25	Y	24	25																
A1-PB-114-A	A1-PB-114-A-0-1-N	530226	0	1	N	0	1																
A1-PB-114-A	A1-PB-114-A-1-2-N	530226	1	2	N	1	2																
A1-PB-114-A	A1-PB-114-A-2-4-N	530226	2	4	Y	2	4																
A1-PB-114-A	A1-PB-114-A-4-6-N	530226	4	6	Y	4	6																
A1-PB-114-A	A1-PB-114-A-6-8-N	530226	6	8	Y	6	8																
A1-PB-114-A	A1-PB-114-A-8-10-N	530226	8	10	Y	8	10																
A1-PB-114-A	A1-PB-114-A-10-12-N	530226	10	12	Y	10	12																
A1-PB-114-A	A1-PB-114-A-12-14-N	530226	12	14	Y	12	14																
A1-PB-114-A	A1-PB-114-A-14-16-N	530226	14	16	Y	14	16																
A1-PB-114-A	A1-PB-114-A-16-18-N	530226	16	18	Y	16	18																
A1-PB-114-A	A1-PB-114-A-18-20-N	530226	18	20	Y	18	20																
A1-PB-114-A	A1-PB-114-A-20-22-N	530226	20	22	Y	20	22																
A1-PB-114-B	A1-PB-114-B-0-0.5-N	558206	0	0.5	N	0	0.5																
A1-PB-114-B	A1-PB-114-B-1.5-1.7-N	558206	1.5	1.7	N	1.5	1.7																
A1-PB-114-B	A1-PB-114-B-2-4-N	558206	2	4	Y	2	4																
A1-PB-114-B	A1-PB-114-B-4-6-N	558206	4	6	Y	4	6																
A1-PB-114-B	A1-PB-114-B-6-8-N	558206	6	8	Y	6	8																
A1-PB-114-B	A1-PB-114-B-8-10-N	558206	8	10	Y	8	10																
A1-PB-114-B	A1-PB-114-B-10-12-N	558206	10	12	Y	10	12																
A1-PB-114-B	A1-PB-114-B-12-14-N	558206	12	14	Y	12	14																
A1-PB-114-B	A1-PB-114-B-14-16-N	558206	14	16	Y	14	16																
A1-PB-114-B	A1-PB-114-B-16-18-N	558206	16	18	Y	16	18																
A1-PB-114-B	A1-PB-114-B-18-20-N	558206	18	20	Y	18	20																
A1-PB-114-C	A1-PB-114-C-0-0.5-N	558593	0	0.5	N	0	0.5																
A1-PB-114-C	A1-PB-114-C-1.5-1.7-N	558593	1.5	1.7	N	1.5	1.7																
A1-PB-114-C	A1-PB-114-C-2-4-N	558593	2	4	Y	2	4																
A1-PB-114-C	A1-PB-114-C-4-6-N	558593	4	6	Y	4	6																
A1-PB-114-C	A1-PB-114-C-6-8-N	558593	6	8	Y	6	8																
A1-PB-114-C	A1-PB-114-C-8-10-N	558593	8	10	Y	8	10																
A1-PB-114-C	A1-PB-114-C-10-12-N	558593	10	12	Y	10	12																
A1-PB-114-C	A1-PB-114-C-12-14-N	558593	12	14	Y	12	14																
A1-PB-114-C	A1-PB-114-C-14-16-N	558593	14	16	Y	14	16																
A1-PB-114-C	A1-PB-114-C-16-18-N	558593	16	18	Y	16	18																
A1-PB-114-D	A1-PB-114-D-0.5-1-N	573035	0.5	1	N	0.5	1																
A1-PB-114-D	A1-PB-114-D-1-1.5-N	573035	1	1.5	N	1	1.5																
A1-PB-114-D	A1-PB-114-D-2-4-N	573035	2	4	Y	2	4																
A1-PB-114-D	A1-PB-114-D-4-6-N	573035	4	6	Y	4	6																

TABLE A10-1 SUMMARY OF ANALYTICAL RESULTS

Location ID	SYS SAMPLE CODE	SDG	Start Depth	End Depth	CHEMICAL_NAME RESULT_UNIT		URANIUM-235 pci/g				
					Composite (Y/N)	Start Depth Below DID	End Depth Below DID	RESULT	QUALIFIERS	RESULT ERROR DELTA	MDL
A1-PB-113	A1-PB-113-0.5-1-N	526807	0.5	1	N	0.5	1				
A1-PB-113	A1-PB-113-1-1.5-N	526807	1	1.5	N	1	1.5				
A1-PB-113	A1-PB-113-2-4-N	526807	2	4	Y	2	4				
A1-PB-113	A1-PB-113-4-6-N	526807	4	6	Y	4	6				
A1-PB-113	A1-PB-113-6-8-N	526807	6	8	Y	6	8				
A1-PB-113	A1-PB-113-8-10-N	526807	8	10	Y	8	10				
A1-PB-113	A1-PB-113-10-12-N	527036	10	12	Y	10	12				
A1-PB-113	A1-PB-113-12-14-N	527036	12	14	Y	12	14				
A1-PB-113	A1-PB-113-14-16-N	527036	14	16	Y	14	16				
A1-PB-113	A1-PB-113-16-18-N	527036	16	18	Y	16	18				
A1-PB-113	A1-PB-113-18-20-N	527036	18	20	Y	18	20				
A1-PB-113	A1-PB-113-20-22-N	527036	20	22	Y	20	22				
A1-PB-113	A1-PB-113-22-24-N	527036	22	24	Y	22	24				
A1-PB-113	A1-PB-113-24-25-N	527036	24	25	Y	24	25				
A1-PB-114-A	A1-PB-114-A-0-1-N	530226	0	1	N	0	1				
A1-PB-114-A	A1-PB-114-A-1-2-N	530226	1	2	N	1	2				
A1-PB-114-A	A1-PB-114-A-2-4-N	530226	2	4	Y	2	4				
A1-PB-114-A	A1-PB-114-A-4-6-N	530226	4	6	Y	4	6				
A1-PB-114-A	A1-PB-114-A-6-8-N	530226	6	8	Y	6	8				
A1-PB-114-A	A1-PB-114-A-8-10-N	530226	8	10	Y	8	10				
A1-PB-114-A	A1-PB-114-A-10-12-N	530226	10	12	Y	10	12				
A1-PB-114-A	A1-PB-114-A-12-14-N	530226	12	14	Y	12	14				
A1-PB-114-A	A1-PB-114-A-14-16-N	530226	14	16	Y	14	16				
A1-PB-114-A	A1-PB-114-A-16-18-N	530226	16	18	Y	16	18				
A1-PB-114-A	A1-PB-114-A-18-20-N	530226	18	20	Y	18	20				
A1-PB-114-A	A1-PB-114-A-20-22-N	530226	20	22	Y	20	22				
A1-PB-114-B	A1-PB-114-B-0-0.5-N	558206	0	0.5	N	0	0.5				
A1-PB-114-B	A1-PB-114-B-1.5-1.7-N	558206	1.5	1.7	N	1.5	1.7				
A1-PB-114-B	A1-PB-114-B-2-4-N	558206	2	4	Y	2	4				
A1-PB-114-B	A1-PB-114-B-4-6-N	558206	4	6	Y	4	6				
A1-PB-114-B	A1-PB-114-B-6-8-N	558206	6	8	Y	6	8				
A1-PB-114-B	A1-PB-114-B-8-10-N	558206	8	10	Y	8	10				
A1-PB-114-B	A1-PB-114-B-10-12-N	558206	10	12	Y	10	12				
A1-PB-114-B	A1-PB-114-B-12-14-N	558206	12	14	Y	12	14				
A1-PB-114-B	A1-PB-114-B-14-16-N	558206	14	16	Y	14	16				
A1-PB-114-B	A1-PB-114-B-16-18-N	558206	16	18	Y	16	18				
A1-PB-114-B	A1-PB-114-B-18-20-N	558206	18	20	Y	18	20				
A1-PB-114-C	A1-PB-114-C-0-0.5-N	558593	0	0.5	N	0	0.5				
A1-PB-114-C	A1-PB-114-C-1.5-1.7-N	558593	1.5	1.7	N	1.5	1.7				
A1-PB-114-C	A1-PB-114-C-2-4-N	558593	2	4	Y	2	4				
A1-PB-114-C	A1-PB-114-C-4-6-N	558593	4	6	Y	4	6				
A1-PB-114-C	A1-PB-114-C-6-8-N	558593	6	8	Y	6	8				
A1-PB-114-C	A1-PB-114-C-8-10-N	558593	8	10	Y	8	10				
A1-PB-114-C	A1-PB-114-C-10-12-N	558593	10	12	Y	10	12				
A1-PB-114-C	A1-PB-114-C-12-14-N	558593	12	14	Y	12	14				
A1-PB-114-C	A1-PB-114-C-14-16-N	558593	14	16	Y	14	16				
A1-PB-114-C	A1-PB-114-C-16-18-N	558593	16	18	Y	16	18				
A1-PB-114-D	A1-PB-114-D-0.5-1-N	573035	0.5	1	N	0.5	1				
A1-PB-114-D	A1-PB-114-D-1-1.5-N	573035	1	1.5	N	1	1.5				
A1-PB-114-D	A1-PB-114-D-2-4-N	573035	2	4	Y	2	4				
A1-PB-114-D	A1-PB-114-D-4-6-N	573035	4	6	Y	4	6				









TABLE A10-1 SUMMARY OF ANALYTICAL RESULTS

Location ID	SYS SAMPLE CODE	SDG	Start Depth	End Depth	CHEMICAL_NAME RESULT_UNIT			PROTACTINIUM 231 pci/g				RADIUM-223 pci/g				RADIUM-224 pci/g				RADIUM-226 pci/g				
					Composite (Y/N)	Start Depth Below DID	End Depth Below DID	RESULT	QUALIFIERS	RESULT ERROR DELTA	MDL	RESULT	QUALIFIERS	RESULT ERROR DELTA	MDL	RESULT	QUALIFIERS	RESULT ERROR DELTA	MDL	RESULT	QUALIFIERS	RESULT ERROR DELTA	MDL	
A1-PB-114-D	A1-PB-114-D-6-8-N	573035	6	8	Y	6	8														1.24		0.139	0.0797
A1-PB-114-D	A1-PB-114-D-8-10-N	573035	8	10	Y	8	10														1.09		0.133	0.0701
A1-PB-114-D	A1-PB-114-D-10-12-N	573035	10	12	Y	10	12														1.4		0.146	0.0876
A1-PB-114-D	A1-PB-114-D-12-14-N	573035	12	14	Y	12	14														1.26		0.124	0.0729
A1-PB-114-D	A1-PB-114-D-14-16-N	573035	14	16	Y	14	16														0.966		0.138	0.0809
A1-PB-114-D	A1-PB-114-D-16-18-N	573035	16	18	Y	16	18														0.574		0.0932	0.0641
A1-PB-114-D	A1-PB-114-D-18-20-N	573035	18	20	Y	18	20														0.537		0.116	0.0678
A1-PB-114-D	A1-PB-114-D-20-22-N	573035	20	22	Y	20	22														0.71		0.106	0.0769
A1-PB-114-D	A1-PB-114-D-22-23-N	573035	22	23	Y	22	23														0.448		0.158	0.0899
A1-PB-114-E	A1-PB-114-E-0-0.5-N	579300	0	0.5	N	0	0.5														0.955		0.158	0.103
A1-PB-114-E	A1-PB-114-E-1.5-2-N	579300	1.5	2	N	1.5	2														1.03		0.139	0.0835
A1-PB-114-E	A1-PB-114-E-2-4-D	579300	2	4	Y	2	4														0.97		0.129	0.08
A1-PB-114-E	A1-PB-114-E-2-4-N	579300	2	4	Y	2	4														1.2		0.138	0.0854
A1-PB-114-E	A1-PB-114-E-4-6-N	579300	4	6	Y	4	6														0.612		0.102	0.0579
A1-PB-114-E	A1-PB-114-E-6-8-N	579300	6	8	Y	6	8														1.11		0.15	0.0829
A1-PB-114-E	A1-PB-114-E-8-10-N	579300	8	10	Y	8	10														1.1		0.134	0.0703
A1-PB-114-F	A1-PB-114-F-0.5-1-N	583090	0.5	1	N	0.5	1														0.911		0.136	0.091
A1-PB-114-F	A1-PB-114-F-1.5-2-N	583090	1.5	2	N	1.5	2														1.12		0.14	0.0919
A1-PB-114-F	A1-PB-114-F-2-4-N	583090	2	4	Y	2	4														1.13		0.168	0.121
A1-PB-114-F	A1-PB-114-F-4-6-N	583090	4	6	Y	4	6														0.915		0.125	0.0807
A1-PB-114-F	A1-PB-114-F-6-8-N	583090	6	8	Y	6	8														1.07		0.129	0.0657
A1-PB-114-F	A1-PB-114-F-8-10-N	583090	8	10	Y	8	10														1.09		0.128	0.0899
A1-PB-114-G	A1-PB-114-G-0.5-1-N	583051	0.5	1	N	0.5	1														0.965		0.154	0.108
A1-PB-114-G	A1-PB-114-G-1-1.5-N	583051	1	1.5	N	1	1.5														0.978		0.139	0.0967
A1-PB-114-G	A1-PB-114-G-2-4-N	583051	2	4	Y	2	4														1.03		0.161	0.0914
A1-PB-114-G	A1-PB-114-G-4-6-N	583051	4	6	Y	4	6														1.03		0.134	0.0994
A1-PB-114-G	A1-PB-114-G-6-8-N	583051	6	8	Y	6	8														1.18		0.173	0.0892
A1-PB-114-G	A1-PB-114-G-8-10-N	583051	8	10	Y	8	10														1.14		0.129	0.0687
A1-PB-114-H	A1-PB-114-H-0.5-1-N	583051	0.5	1	N	0.5	1														1.17		0.131	0.0729
A1-PB-114-H	A1-PB-114-H-1.5-2-N	583051	1.5	2	N	1.5	2														1.01		0.132	0.0829
A1-PB-114-H	A1-PB-114-H-2-4-N	583051	2	4	Y	2	4														1.13		0.182	0.0984
A1-PB-114-H	A1-PB-114-H-4-6-N	583051	4	6	Y	4	6														1.15		0.138	0.0831
A1-PB-114-H	A1-PB-114-H-6-8-N	583051	6	8	Y	6	8														1.16		0.128	0.0763
A1-PB-114-H	A1-PB-114-H-8-10-D	583051	8	10	Y	8	10														0.963		0.168	0.0939
A1-PB-114-H	A1-PB-114-H-8-10-N	583051	8	10	Y	8	10														1.23		0.19	0.119
A1-PB-114-I	A1-PB-114-I-0.5-1-N	583051	0.5	1	N	0.5	1														1.22		0.188	0.108
A1-PB-114-I	A1-PB-114-I-1.5-2-N	583051	1.5	2	N	1.5	2														1.07		0.151	0.0746
A1-PB-114-I	A1-PB-114-I-2-4-N	583051	2	4	Y	2	4														1.07		0.143	0.0844
A1-PB-114-I	A1-PB-114-I-4-6-N	583051	4	6	Y	4	6														0.989		0.141	0.108
A1-PB-114-I	A1-PB-114-I-6-8-N	583051	6	8	Y	6	8														1.24		0.147	0.0851
A1-PB-114-I	A1-PB-114-I-8-10-N	583051	8	10	Y	8	10														1.11		0.129	0.0799
A1-PB-114-J	A1-PB-114-J-0-0.5-N	587854	0	0.5	N	0	0.5														1.1		0.143	0.085
A1-PB-114-J	A1-PB-114-J-0.5-1-N	587854	0.5	1	N	0.5	1														1.16		0.12	0.0663
A1-PB-114-J	A1-PB-114-J-1-1.5-N	587854	1	1.5	N	1	1.5														1.11		0.143	0.0762
A1-PB-114-J	A1-PB-114-J-1.5-2-N	587854	1.5	2	N	1.5	2														1.02		0.178	0.109
A1-PB-114-J	A1-PB-114-J-2-4-N	587854	2	4	Y	2	4														1.09		0.158	0.0883
A1-PB-114-J	A1-PB-114-J-4-6-D	587854	4	6	Y	4	6														1.22		0.129	0.0768
A1-PB-114-J	A1-PB-114-J-4-6-N	587854	4	6	Y	4	6														1.2		0.159	0.0978
A1-PB-114-J	A1-PB-114-J-6-8-N	587854	6	8	Y	6	8														1.15		0.134	0.069
A1-PB-114-J	A1-PB-114-J-8-10-N	587854	8	10	Y	8	10														1		0.141	0.0822

TABLE A10-1 SUMMARY OF ANALYTICAL RESULTS

Location ID	SYS SAMPLE CODE	SDG	Start Depth	End Depth	CHEMICAL_NAME RESULT_UNIT			RADIUM-228 pci/g				THALLIUM-208 pci/g				THORIUM-228 pci/g				THORIUM-230 pci/g		
					Composite (Y/N)	Start Depth Below DID	End Depth Below DID	RESULT	QUALIFIERS	RESULT ERROR DELTA	MDL	RESULT	QUALIFIERS	RESULT_ERR OR_DELTA	MDL	RESULT	QUALIFIERS	RESULT ERROR DELTA	MDL	RESULT	QUALIFIERS	RESULT ERROR DELTA
A1-PB-114-D	A1-PB-114-D-6-8-N	573035	6	8	Y	6	8	1.05		0.188	0.146									8.5		0.586
A1-PB-114-D	A1-PB-114-D-8-10-N	573035	8	10	Y	8	10	1.05		0.222	0.156									1.55		0.215
A1-PB-114-D	A1-PB-114-D-10-12-N	573035	10	12	Y	10	12	1.21		0.297	0.177									1.6		0.329
A1-PB-114-D	A1-PB-114-D-12-14-N	573035	12	14	Y	12	14	1.27		0.21	0.16									1.38		0.281
A1-PB-114-D	A1-PB-114-D-14-16-N	573035	14	16	Y	14	16	1.07		0.211	0.157									1.23		0.203
A1-PB-114-D	A1-PB-114-D-16-18-N	573035	16	18	Y	16	18	0.598		0.174	0.122									0.597		0.19
A1-PB-114-D	A1-PB-114-D-18-20-N	573035	18	20	Y	18	20	0.548		0.197	0.14									0.973		0.183
A1-PB-114-D	A1-PB-114-D-20-22-N	573035	20	22	Y	20	22	0.688		0.238	0.141									1.01		0.173
A1-PB-114-D	A1-PB-114-D-22-23-N	573035	22	23	Y	22	23	0.556		0.218	0.212									0.834		0.164
A1-PB-114-E	A1-PB-114-E-0-0.5-N	579300	0	0.5	N	0	0.5	0.764		0.261	0.215									1.82		0.286
A1-PB-114-E	A1-PB-114-E-1.5-2-N	579300	1.5	2	N	1.5	2	1.1		0.2	0.171									1.34		0.249
A1-PB-114-E	A1-PB-114-E-2-4-D	579300	2	4	Y	2	4	0.951		0.257	0.172									1.31		0.219
A1-PB-114-E	A1-PB-114-E-2-4-N	579300	2	4	Y	2	4	1.01		0.255	0.168									1.44		0.246
A1-PB-114-E	A1-PB-114-E-4-6-N	579300	4	6	Y	4	6	0.484		0.159	0.128									4.15		0.41
A1-PB-114-E	A1-PB-114-E-6-8-N	579300	6	8	Y	6	8	0.34		0.19	0.289									15		1.07
A1-PB-114-E	A1-PB-114-E-8-10-N	579300	8	10	Y	8	10	1.05		0.236	0.117									2.36		0.273
A1-PB-114-F	A1-PB-114-F-0.5-1-N	583090	0.5	1	N	0.5	1	1.07		0.257	0.175									1.32		0.28
A1-PB-114-F	A1-PB-114-F-1.5-2-N	583090	1.5	2	N	1.5	2	1.16		0.237	0.169									1.23		0.259
A1-PB-114-F	A1-PB-114-F-2-4-N	583090	2	4	Y	2	4	1.42		0.347	0.185									1.29		0.275
A1-PB-114-F	A1-PB-114-F-4-6-N	583090	4	6	Y	4	6	0.91		0.238	0.154									1.61		0.332
A1-PB-114-F	A1-PB-114-F-6-8-N	583090	6	8	Y	6	8	1.02		0.235	0.169									3.08		0.456
A1-PB-114-F	A1-PB-114-F-8-10-N	583090	8	10	Y	8	10	1.45		0.26	0.147									1.9		0.303
A1-PB-114-G	A1-PB-114-G-0.5-1-N	583051	0.5	1	N	0.5	1	0.987		0.262	0.227									1.34		0.277
A1-PB-114-G	A1-PB-114-G-1-1.5-N	583051	1	1.5	N	1	1.5	1.47		0.281	0.179									1.67		0.305
A1-PB-114-G	A1-PB-114-G-2-4-N	583051	2	4	Y	2	4	0.902		0.249	0.184									1.23		0.263
A1-PB-114-G	A1-PB-114-G-4-6-N	583051	4	6	Y	4	6	1.05		0.265	0.209									1.1		0.237
A1-PB-114-G	A1-PB-114-G-6-8-N	583051	6	8	Y	6	8	1.1		0.303	0.213									2.25		0.373
A1-PB-114-G	A1-PB-114-G-8-10-N	583051	8	10	Y	8	10	1.2		0.224	0.133									1.54		0.334
A1-PB-114-H	A1-PB-114-H-0.5-1-N	583051	0.5	1	N	0.5	1	1.19		0.221	0.17									1.62		0.297
A1-PB-114-H	A1-PB-114-H-1.5-2-N	583051	1.5	2	N	1.5	2	1.29		0.232	0.155									1.46		0.283
A1-PB-114-H	A1-PB-114-H-2-4-N	583051	2	4	Y	2	4	1.24		0.343	0.217									1.26		0.257
A1-PB-114-H	A1-PB-114-H-4-6-N	583051	4	6	Y	4	6	0.958		0.233	0.151									1.54		0.272
A1-PB-114-H	A1-PB-114-H-6-8-N	583051	6	8	Y	6	8	1.05		0.193	0.157									1.07		0.247
A1-PB-114-H	A1-PB-114-H-8-10-D	583051	8	10	Y	8	10	1.33		0.233	0.169									1.2	J	0.244
A1-PB-114-H	A1-PB-114-H-8-10-N	583051	8	10	Y	8	10	1.11		0.328	0.244									3.95	J	0.451
A1-PB-114-I	A1-PB-114-I-0.5-1-N	583051	0.5	1	N	0.5	1	1.22		0.28	0.245									1.5		0.243
A1-PB-114-I	A1-PB-114-I-1.5-2-N	583051	1.5	2	N	1.5	2	1.02		0.263	0.187									1.59		0.24
A1-PB-114-I	A1-PB-114-I-2-4-N	583051	2	4	Y	2	4	1		0.289	0.188									1.45		0.282
A1-PB-114-I	A1-PB-114-I-4-6-N	583051	4	6	Y	4	6	1.36		0.313	0.204									1.38		0.22
A1-PB-114-I	A1-PB-114-I-6-8-N	583051	6	8	Y	6	8	1.36		0.206	0.164									7.34		0.503
A1-PB-114-I	A1-PB-114-I-8-10-N	583051	8	10	Y	8	10	1.05		0.253	0.159									2.06		0.272
A1-PB-114-J	A1-PB-114-J-0-0.5-N	587854	0	0.5	N	0	0.5	1.18		0.25	0.178									1.39		0.247
A1-PB-114-J	A1-PB-114-J-0.5-1-N	587854	0.5	1	N	0.5	1	1.15		0.228	0.143									1.3		0.235
A1-PB-114-J	A1-PB-114-J-1-1.5-N	587854	1	1.5	N	1	1.5	1.26		0.214	0.159									1.4		0.283
A1-PB-114-J	A1-PB-114-J-1.5-2-N	587854	1.5	2	N	1.5	2	1.12		0.302	0.251									1.11		0.243
A1-PB-114-J	A1-PB-114-J-2-4-N	587854	2	4	Y	2	4	1.08		0.254	0.168									1.27		0.245
A1-PB-114-J	A1-PB-114-J-4-6-D	587854	4	6	Y	4	6	1.14		0.218	0.156									5.73		0.513
A1-PB-114-J	A1-PB-114-J-4-6-N	587854	4	6	Y	4	6	0.979		0.244	0.196									4.09		0.433
A1-PB-114-J	A1-PB-114-J-6-8-N	587854	6	8	Y	6	8	1.08		0.201	0.159									5.12		0.466
A1-PB-114-J	A1-PB-114-J-8-10-N	587854	8	10	Y	8	10	1.26		0.24	0.168									1.45		0.267

TABLE A10-1 SUMMARY OF ANALYTICAL RESULTS

Location ID	SYS SAMPLE CODE	SDG	Start Depth	End Depth	Composite (Y/N)	Start Depth Below DID	End Depth Below DID	CHEMICAL_NAME
								RESULT_UNIT
MDL								
A1-PB-114-D	A1-PB-114-D-6-8-N	573035	6	8	Y	6	8	0.183
A1-PB-114-D	A1-PB-114-D-8-10-N	573035	8	10	Y	8	10	0.0951
A1-PB-114-D	A1-PB-114-D-10-12-N	573035	10	12	Y	10	12	0.301
A1-PB-114-D	A1-PB-114-D-12-14-N	573035	12	14	Y	12	14	0.258
A1-PB-114-D	A1-PB-114-D-14-16-N	573035	14	16	Y	14	16	0.122
A1-PB-114-D	A1-PB-114-D-16-18-N	573035	16	18	Y	16	18	0.209
A1-PB-114-D	A1-PB-114-D-18-20-N	573035	18	20	Y	18	20	0.118
A1-PB-114-D	A1-PB-114-D-20-22-N	573035	20	22	Y	20	22	0.0926
A1-PB-114-D	A1-PB-114-D-22-23-N	573035	22	23	Y	22	23	0.111
A1-PB-114-E	A1-PB-114-E-0-0.5-N	579300	0	0.5	N	0	0.5	0.133
A1-PB-114-E	A1-PB-114-E-1.5-2-N	579300	1.5	2	N	1.5	2	0.163
A1-PB-114-E	A1-PB-114-E-2-4-D	579300	2	4	Y	2	4	0.146
A1-PB-114-E	A1-PB-114-E-2-4-N	579300	2	4	Y	2	4	0.176
A1-PB-114-E	A1-PB-114-E-4-6-N	579300	4	6	Y	4	6	0.178
A1-PB-114-E	A1-PB-114-E-6-8-N	579300	6	8	Y	6	8	0.29
A1-PB-114-E	A1-PB-114-E-8-10-N	579300	8	10	Y	8	10	0.131
A1-PB-114-F	A1-PB-114-F-0.5-1-N	583090	0.5	1	N	0.5	1	0.206
A1-PB-114-F	A1-PB-114-F-1.5-2-N	583090	1.5	2	N	1.5	2	0.217
A1-PB-114-F	A1-PB-114-F-2-4-N	583090	2	4	Y	2	4	0.226
A1-PB-114-F	A1-PB-114-F-4-6-N	583090	4	6	Y	4	6	0.278
A1-PB-114-F	A1-PB-114-F-6-8-N	583090	6	8	Y	6	8	0.344
A1-PB-114-F	A1-PB-114-F-8-10-N	583090	8	10	Y	8	10	0.172
A1-PB-114-G	A1-PB-114-G-0.5-1-N	583051	0.5	1	N	0.5	1	0.201
A1-PB-114-G	A1-PB-114-G-1-1.5-N	583051	1	1.5	N	1	1.5	0.21
A1-PB-114-G	A1-PB-114-G-2-4-N	583051	2	4	Y	2	4	0.216
A1-PB-114-G	A1-PB-114-G-4-6-N	583051	4	6	Y	4	6	0.212
A1-PB-114-G	A1-PB-114-G-6-8-N	583051	6	8	Y	6	8	0.235
A1-PB-114-G	A1-PB-114-G-8-10-N	583051	8	10	Y	8	10	0.265
A1-PB-114-H	A1-PB-114-H-0.5-1-N	583051	0.5	1	N	0.5	1	0.212
A1-PB-114-H	A1-PB-114-H-1.5-2-N	583051	1.5	2	N	1.5	2	0.196
A1-PB-114-H	A1-PB-114-H-2-4-N	583051	2	4	Y	2	4	0.131
A1-PB-114-H	A1-PB-114-H-4-6-N	583051	4	6	Y	4	6	0.139
A1-PB-114-H	A1-PB-114-H-6-8-N	583051	6	8	Y	6	8	0.241
A1-PB-114-H	A1-PB-114-H-8-10-D	583051	8	10	Y	8	10	0.209
A1-PB-114-H	A1-PB-114-H-8-10-N	583051	8	10	Y	8	10	0.226
A1-PB-114-I	A1-PB-114-I-0.5-1-N	583051	0.5	1	N	0.5	1	0.157
A1-PB-114-I	A1-PB-114-I-1.5-2-N	583051	1.5	2	N	1.5	2	0.148
A1-PB-114-I	A1-PB-114-I-2-4-N	583051	2	4	Y	2	4	0.234
A1-PB-114-I	A1-PB-114-I-4-6-N	583051	4	6	Y	4	6	0.131
A1-PB-114-I	A1-PB-114-I-6-8-N	583051	6	8	Y	6	8	0.151
A1-PB-114-I	A1-PB-114-I-8-10-N	583051	8	10	Y	8	10	0.144
A1-PB-114-J	A1-PB-114-J-0-0.5-N	587854	0	0.5	N	0	0.5	0.164
A1-PB-114-J	A1-PB-114-J-0.5-1-N	587854	0.5	1	N	0.5	1	0.138
A1-PB-114-J	A1-PB-114-J-1-1.5-N	587854	1	1.5	N	1	1.5	0.21
A1-PB-114-J	A1-PB-114-J-1.5-2-N	587854	1.5	2	N	1.5	2	0.171
A1-PB-114-J	A1-PB-114-J-2-4-N	587854	2	4	Y	2	4	0.204
A1-PB-114-J	A1-PB-114-J-4-6-D	587854	4	6	Y	4	6	0.242
A1-PB-114-J	A1-PB-114-J-4-6-N	587854	4	6	Y	4	6	0.182
A1-PB-114-J	A1-PB-114-J-6-8-N	587854	6	8	Y	6	8	0.164
A1-PB-114-J	A1-PB-114-J-8-10-N	587854	8	10	Y	8	10	0.181

TABLE A10-1 SUMMARY OF ANALYTICAL RESULTS

Location ID	SYS SAMPLE CODE	SDG	Start Depth	End Depth	CHEMICAL_NAME RESULT_UNIT			THORIUM-232 pci/g				THORIUM-234 pci/g				TOTAL RADIUM pci/g				Total Thorium pci/g			
					Composite (Y/N)	Start Depth Below DID	End Depth Below DID	RESULT	QUALIFIERS	RESULT ERROR DELTA	MDL	RESULT	QUALIFIERS	RESULT ERROR DELTA	MDL	RESULT	QUALIFIERS	RESULT ERROR DELTA	MDL	RESULT	QUALIFIERS	RESULT ERROR DELTA	MDL
A1-PB-114-D	A1-PB-114-D-6-8-N	573035	6	8	Y	6	8	0.78		0.186	0.128					2.29		0.327		9.28		0.772	
A1-PB-114-D	A1-PB-114-D-8-10-N	573035	8	10	Y	8	10	1.22		0.191	0.0848					2.14		0.355		2.77		0.406	
A1-PB-114-D	A1-PB-114-D-10-12-N	573035	10	12	Y	10	12	1.33		0.268	0.107					2.61		0.443		2.93		0.597	
A1-PB-114-D	A1-PB-114-D-12-14-N	573035	12	14	Y	12	14	1.23		0.238	0.112					2.53		0.334		2.61		0.519	
A1-PB-114-D	A1-PB-114-D-14-16-N	573035	14	16	Y	14	16	1.01		0.177	0.061					2.04		0.349		2.24		0.380	
A1-PB-114-D	A1-PB-114-D-16-18-N	573035	16	18	Y	16	18	0.573		0.157	0.0798					1.17		0.267		1.17		0.347	
A1-PB-114-D	A1-PB-114-D-18-20-N	573035	18	20	Y	18	20	0.531	J	0.13	0.0432					1.09		0.313		1.50	J	0.313	
A1-PB-114-D	A1-PB-114-D-20-22-N	573035	20	22	Y	20	22	0.865		0.159	0.0758					1.40		0.344		1.88		0.332	
A1-PB-114-D	A1-PB-114-D-22-23-N	573035	22	23	Y	22	23	0.757		0.149	0.0577					1.00		0.376		1.59		0.313	
A1-PB-114-E	A1-PB-114-E-0-0.5-N	579300	0	0.5	N	0	0.5	0.811		0.191	0.0889					1.72		0.419		2.63		0.477	
A1-PB-114-E	A1-PB-114-E-1.5-2-N	579300	1.5	2	N	1.5	2	0.795		0.188	0.105					2.13		0.339		2.14		0.437	
A1-PB-114-E	A1-PB-114-E-2-4-D	579300	2	4	Y	2	4	0.982		0.182	0.0833					1.92		0.386		2.29		0.401	
A1-PB-114-E	A1-PB-114-E-2-4-N	579300	2	4	Y	2	4	0.994		0.201	0.128					2.21		0.393		2.43		0.447	
A1-PB-114-E	A1-PB-114-E-4-6-N	579300	4	6	Y	4	6	0.394		0.129	0.0809					1.10		0.261		4.54		0.539	
A1-PB-114-E	A1-PB-114-E-6-8-N	579300	6	8	Y	6	8	0.539		0.215	0.153					1.45		0.340		15.5		1.29	
A1-PB-114-E	A1-PB-114-E-8-10-N	579300	8	10	Y	8	10	0.979		0.173	0.0632					2.15		0.370		3.34		0.446	
A1-PB-114-F	A1-PB-114-F-0.5-1-N	583090	0.5	1	N	0.5	1	1.05		0.236	0.105					1.98		0.393		2.37		0.516	
A1-PB-114-F	A1-PB-114-F-1.5-2-N	583090	1.5	2	N	1.5	2	1.11		0.226	0.092					2.28		0.377		2.34		0.485	
A1-PB-114-F	A1-PB-114-F-2-4-N	583090	2	4	Y	2	4	1.16		0.246	0.14					2.55		0.515		2.45		0.521	
A1-PB-114-F	A1-PB-114-F-4-6-N	583090	4	6	Y	4	6	1.11		0.263	0.181					1.83		0.363		2.72		0.595	
A1-PB-114-F	A1-PB-114-F-6-8-N	583090	6	8	Y	6	8	0.952		0.243	0.144					2.09		0.364		4.03		0.699	
A1-PB-114-F	A1-PB-114-F-8-10-N	583090	8	10	Y	8	10	1.09		0.227	0.113					2.54		0.388		2.99		0.530	
A1-PB-114-G	A1-PB-114-G-0.5-1-N	583051	0.5	1	N	0.5	1	1.07		0.232	0.0626					1.95		0.416		2.41		0.509	
A1-PB-114-G	A1-PB-114-G-1-1.5-N	583051	1	1.5	N	1	1.5	0.564		0.184	0.158					2.45		0.420		2.23		0.489	
A1-PB-114-G	A1-PB-114-G-2-4-N	583051	2	4	Y	2	4	1.06		0.233	0.148					1.93		0.410		2.29		0.496	
A1-PB-114-G	A1-PB-114-G-4-6-N	583051	4	6	Y	4	6	1.05		0.208	0.0836					2.08		0.399		2.15		0.445	
A1-PB-114-G	A1-PB-114-G-6-8-N	583051	6	8	Y	6	8	1.2		0.266	0.141					2.28		0.476		3.45		0.639	
A1-PB-114-G	A1-PB-114-G-8-10-N	583051	8	10	Y	8	10	1.3		0.283	0.0733					2.34		0.353		2.84		0.617	
A1-PB-114-H	A1-PB-114-H-0.5-1-N	583051	0.5	1	N	0.5	1	1.03		0.23	0.137					2.36		0.352		2.65		0.527	
A1-PB-114-H	A1-PB-114-H-1.5-2-N	583051	1.5	2	N	1.5	2	1.07		0.234	0.122					2.30		0.364		2.53		0.517	
A1-PB-114-H	A1-PB-114-H-2-4-N	583051	2	4	Y	2	4	0.923		0.218	0.102					2.37		0.525		2.18		0.475	
A1-PB-114-H	A1-PB-114-H-4-6-N	583051	4	6	Y	4	6	1.29		0.243	0.0577					2.11		0.371		2.83		0.515	
A1-PB-114-H	A1-PB-114-H-6-8-N	583051	6	8	Y	6	8	0.995		0.213	0.123					2.21		0.321		2.07		0.460	
A1-PB-114-H	A1-PB-114-H-8-10-D	583051	8	10	Y	8	10	1.12		0.214	0.0828					2.29		0.401		2.32	J	0.458	
A1-PB-114-H	A1-PB-114-H-8-10-N	583051	8	10	Y	8	10	1.12		0.244	0.155					2.34		0.518		5.07	J	0.695	
A1-PB-114-I	A1-PB-114-I-0.5-1-N	583051	0.5	1	N	0.5	1	0.946		0.187	0.09					2.44		0.468		2.45		0.430	
A1-PB-114-I	A1-PB-114-I-1.5-2-N	583051	1.5	2	N	1.5	2	0.843		0.174	0.107					2.09		0.414		2.43		0.414	
A1-PB-114-I	A1-PB-114-I-2-4-N	583051	2	4	Y	2	4	1.15		0.232	0.114					2.07		0.432		2.60		0.514	
A1-PB-114-I	A1-PB-114-I-4-6-N	583051	4	6	Y	4	6	1.15		0.192	0.0437					2.35		0.454		2.53		0.412	
A1-PB-114-I	A1-PB-114-I-6-8-N	583051	6	8	Y	6	8	1.03		0.196	0.119					2.60		0.353		8.37		0.699	
A1-PB-114-I	A1-PB-114-I-8-10-N	583051	8	10	Y	8	10	0.998		0.189	0.0982					2.16		0.382		3.06		0.461	
A1-PB-114-J	A1-PB-114-J-0-0.5-N	587854	0	0.5	N	0	0.5	1.07		0.205	0.0516					2.28		0.393		2.46		0.452	
A1-PB-114-J	A1-PB-114-J-0.5-1-N	587854	0.5	1	N	0.5	1	0.974		0.197	0.052					2.31		0.348		2.27		0.432	
A1-PB-114-J	A1-PB-114-J-1-1.5-N	587854	1	1.5	N	1	1.5	1.09		0.233	0.0622					2.37		0.357		2.49		0.516	
A1-PB-114-J	A1-PB-114-J-1.5-2-N	587854	1.5	2	N	1.5	2	1.11		0.235	0.119					2.14		0.480		2.22		0.478	
A1-PB-114-J	A1-PB-114-J-2-4-N	587854	2	4	Y	2	4	1.21		0.22	0.0982					2.17		0.412		2.48		0.465	
A1-PB-114-J	A1-PB-114-J-4-6-D	587854	4	6	Y	4	6	0.946		0.209	0.111					2.36		0.347		6.68		0.722	
A1-PB-114-J	A1-PB-114-J-4-6-N	587854	4	6	Y	4	6	1.27		0.237	0.0571					2.18		0.403		5.36		0.670	
A1-PB-114-J	A1-PB-114-J-6-8-N	587854	6	8	Y	6	8	1.01		0.208	0.0863					2.23		0.335		6.13		0.674	
A1-PB-114-J	A1-PB-114-J-8-10-N	587854	8	10	Y	8	10	1.03		0.215	0.0907					2.26		0.381		2.48		0.482	

TABLE A10-1 SUMMARY OF ANALYTICAL RESULTS

Location ID	SYS SAMPLE CODE	SDG	Start Depth	End Depth	CHEMICAL_NAME RESULT_UNIT			URANIUM pci/g				URANIUM 233 AND 234 pci/g				URANIUM 235 AND 236 pci/g				URANIUM-234 pci/g			
					Composite (Y/N)	Start Depth Below DID	End Depth Below DID	RESULT	QUALIFIERS	RESULT ERROR DELTA	MDL	RESULT	QUALIFIERS	RESULT ERROR DELTA	MDL	RESULT	QUALIFIERS	RESULT ERROR DELTA	MDL	RESULT	QUALIFIERS	RESULT ERROR DELTA	MDL
A1-PB-114-D	A1-PB-114-D-6-8-N	573035	6	8	Y	6	8																
A1-PB-114-D	A1-PB-114-D-8-10-N	573035	8	10	Y	8	10																
A1-PB-114-D	A1-PB-114-D-10-12-N	573035	10	12	Y	10	12																
A1-PB-114-D	A1-PB-114-D-12-14-N	573035	12	14	Y	12	14																
A1-PB-114-D	A1-PB-114-D-14-16-N	573035	14	16	Y	14	16																
A1-PB-114-D	A1-PB-114-D-16-18-N	573035	16	18	Y	16	18																
A1-PB-114-D	A1-PB-114-D-18-20-N	573035	18	20	Y	18	20																
A1-PB-114-D	A1-PB-114-D-20-22-N	573035	20	22	Y	20	22																
A1-PB-114-D	A1-PB-114-D-22-23-N	573035	22	23	Y	22	23																
A1-PB-114-E	A1-PB-114-E-0-0.5-N	579300	0	0.5	N	0	0.5																
A1-PB-114-E	A1-PB-114-E-1.5-2-N	579300	1.5	2	N	1.5	2																
A1-PB-114-E	A1-PB-114-E-2-4-D	579300	2	4	Y	2	4																
A1-PB-114-E	A1-PB-114-E-2-4-N	579300	2	4	Y	2	4																
A1-PB-114-E	A1-PB-114-E-4-6-N	579300	4	6	Y	4	6																
A1-PB-114-E	A1-PB-114-E-6-8-N	579300	6	8	Y	6	8																
A1-PB-114-E	A1-PB-114-E-8-10-N	579300	8	10	Y	8	10																
A1-PB-114-F	A1-PB-114-F-0.5-1-N	583090	0.5	1	N	0.5	1																
A1-PB-114-F	A1-PB-114-F-1.5-2-N	583090	1.5	2	N	1.5	2																
A1-PB-114-F	A1-PB-114-F-2-4-N	583090	2	4	Y	2	4																
A1-PB-114-F	A1-PB-114-F-4-6-N	583090	4	6	Y	4	6																
A1-PB-114-F	A1-PB-114-F-6-8-N	583090	6	8	Y	6	8																
A1-PB-114-F	A1-PB-114-F-8-10-N	583090	8	10	Y	8	10																
A1-PB-114-G	A1-PB-114-G-0.5-1-N	583051	0.5	1	N	0.5	1																
A1-PB-114-G	A1-PB-114-G-1-1.5-N	583051	1	1.5	N	1	1.5																
A1-PB-114-G	A1-PB-114-G-2-4-N	583051	2	4	Y	2	4																
A1-PB-114-G	A1-PB-114-G-4-6-N	583051	4	6	Y	4	6																
A1-PB-114-G	A1-PB-114-G-6-8-N	583051	6	8	Y	6	8																
A1-PB-114-G	A1-PB-114-G-8-10-N	583051	8	10	Y	8	10																
A1-PB-114-H	A1-PB-114-H-0.5-1-N	583051	0.5	1	N	0.5	1																
A1-PB-114-H	A1-PB-114-H-1.5-2-N	583051	1.5	2	N	1.5	2																
A1-PB-114-H	A1-PB-114-H-2-4-N	583051	2	4	Y	2	4																
A1-PB-114-H	A1-PB-114-H-4-6-N	583051	4	6	Y	4	6																
A1-PB-114-H	A1-PB-114-H-6-8-N	583051	6	8	Y	6	8																
A1-PB-114-H	A1-PB-114-H-8-10-D	583051	8	10	Y	8	10																
A1-PB-114-H	A1-PB-114-H-8-10-N	583051	8	10	Y	8	10																
A1-PB-114-I	A1-PB-114-I-0.5-1-N	583051	0.5	1	N	0.5	1																
A1-PB-114-I	A1-PB-114-I-1.5-2-N	583051	1.5	2	N	1.5	2																
A1-PB-114-I	A1-PB-114-I-2-4-N	583051	2	4	Y	2	4																
A1-PB-114-I	A1-PB-114-I-4-6-N	583051	4	6	Y	4	6																
A1-PB-114-I	A1-PB-114-I-6-8-N	583051	6	8	Y	6	8																
A1-PB-114-I	A1-PB-114-I-8-10-N	583051	8	10	Y	8	10																
A1-PB-114-J	A1-PB-114-J-0-0.5-N	587854	0	0.5	N	0	0.5																
A1-PB-114-J	A1-PB-114-J-0.5-1-N	587854	0.5	1	N	0.5	1																
A1-PB-114-J	A1-PB-114-J-1-1.5-N	587854	1	1.5	N	1	1.5																
A1-PB-114-J	A1-PB-114-J-1.5-2-N	587854	1.5	2	N	1.5	2																
A1-PB-114-J	A1-PB-114-J-2-4-N	587854	2	4	Y	2	4																
A1-PB-114-J	A1-PB-114-J-4-6-D	587854	4	6	Y	4	6																
A1-PB-114-J	A1-PB-114-J-4-6-N	587854	4	6	Y	4	6																
A1-PB-114-J	A1-PB-114-J-6-8-N	587854	6	8	Y	6	8																
A1-PB-114-J	A1-PB-114-J-8-10-N	587854	8	10	Y	8	10																

TABLE A10-1 SUMMARY OF ANALYTICAL RESULTS

Location ID	SYS SAMPLE CODE	SDG	Start Depth	End Depth	Composite (Y/N)	Start Depth Below DID	End Depth Below DID	URANIUM-235			
								CHEMICAL_NAME	RESULT	QUALIFIERS	RESULT ERROR DELTA
RESULT_UNIT								pci/g			
A1-PB-114-D	A1-PB-114-D-6-8-N	573035	6	8	Y	6	8				
A1-PB-114-D	A1-PB-114-D-8-10-N	573035	8	10	Y	8	10				
A1-PB-114-D	A1-PB-114-D-10-12-N	573035	10	12	Y	10	12				
A1-PB-114-D	A1-PB-114-D-12-14-N	573035	12	14	Y	12	14				
A1-PB-114-D	A1-PB-114-D-14-16-N	573035	14	16	Y	14	16				
A1-PB-114-D	A1-PB-114-D-16-18-N	573035	16	18	Y	16	18				
A1-PB-114-D	A1-PB-114-D-18-20-N	573035	18	20	Y	18	20				
A1-PB-114-D	A1-PB-114-D-20-22-N	573035	20	22	Y	20	22				
A1-PB-114-D	A1-PB-114-D-22-23-N	573035	22	23	Y	22	23				
A1-PB-114-E	A1-PB-114-E-0-0.5-N	579300	0	0.5	N	0	0.5				
A1-PB-114-E	A1-PB-114-E-1.5-2-N	579300	1.5	2	N	1.5	2				
A1-PB-114-E	A1-PB-114-E-2-4-D	579300	2	4	Y	2	4				
A1-PB-114-E	A1-PB-114-E-2-4-N	579300	2	4	Y	2	4				
A1-PB-114-E	A1-PB-114-E-4-6-N	579300	4	6	Y	4	6				
A1-PB-114-E	A1-PB-114-E-6-8-N	579300	6	8	Y	6	8				
A1-PB-114-E	A1-PB-114-E-8-10-N	579300	8	10	Y	8	10				
A1-PB-114-F	A1-PB-114-F-0.5-1-N	583090	0.5	1	N	0.5	1				
A1-PB-114-F	A1-PB-114-F-1.5-2-N	583090	1.5	2	N	1.5	2				
A1-PB-114-F	A1-PB-114-F-2-4-N	583090	2	4	Y	2	4				
A1-PB-114-F	A1-PB-114-F-4-6-N	583090	4	6	Y	4	6				
A1-PB-114-F	A1-PB-114-F-6-8-N	583090	6	8	Y	6	8				
A1-PB-114-F	A1-PB-114-F-8-10-N	583090	8	10	Y	8	10				
A1-PB-114-G	A1-PB-114-G-0.5-1-N	583051	0.5	1	N	0.5	1				
A1-PB-114-G	A1-PB-114-G-1-1.5-N	583051	1	1.5	N	1	1.5				
A1-PB-114-G	A1-PB-114-G-2-4-N	583051	2	4	Y	2	4				
A1-PB-114-G	A1-PB-114-G-4-6-N	583051	4	6	Y	4	6				
A1-PB-114-G	A1-PB-114-G-6-8-N	583051	6	8	Y	6	8				
A1-PB-114-G	A1-PB-114-G-8-10-N	583051	8	10	Y	8	10				
A1-PB-114-H	A1-PB-114-H-0.5-1-N	583051	0.5	1	N	0.5	1				
A1-PB-114-H	A1-PB-114-H-1.5-2-N	583051	1.5	2	N	1.5	2				
A1-PB-114-H	A1-PB-114-H-2-4-N	583051	2	4	Y	2	4				
A1-PB-114-H	A1-PB-114-H-4-6-N	583051	4	6	Y	4	6				
A1-PB-114-H	A1-PB-114-H-6-8-N	583051	6	8	Y	6	8				
A1-PB-114-H	A1-PB-114-H-8-10-D	583051	8	10	Y	8	10				
A1-PB-114-H	A1-PB-114-H-8-10-N	583051	8	10	Y	8	10				
A1-PB-114-I	A1-PB-114-I-0.5-1-N	583051	0.5	1	N	0.5	1				
A1-PB-114-I	A1-PB-114-I-1.5-2-N	583051	1.5	2	N	1.5	2				
A1-PB-114-I	A1-PB-114-I-2-4-N	583051	2	4	Y	2	4				
A1-PB-114-I	A1-PB-114-I-4-6-N	583051	4	6	Y	4	6				
A1-PB-114-I	A1-PB-114-I-6-8-N	583051	6	8	Y	6	8				
A1-PB-114-I	A1-PB-114-I-8-10-N	583051	8	10	Y	8	10				
A1-PB-114-J	A1-PB-114-J-0-0.5-N	587854	0	0.5	N	0	0.5				
A1-PB-114-J	A1-PB-114-J-0.5-1-N	587854	0.5	1	N	0.5	1				
A1-PB-114-J	A1-PB-114-J-1-1.5-N	587854	1	1.5	N	1	1.5				
A1-PB-114-J	A1-PB-114-J-1.5-2-N	587854	1.5	2	N	1.5	2				
A1-PB-114-J	A1-PB-114-J-2-4-N	587854	2	4	Y	2	4				
A1-PB-114-J	A1-PB-114-J-4-6-D	587854	4	6	Y	4	6				
A1-PB-114-J	A1-PB-114-J-4-6-N	587854	4	6	Y	4	6				
A1-PB-114-J	A1-PB-114-J-6-8-N	587854	6	8	Y	6	8				
A1-PB-114-J	A1-PB-114-J-8-10-N	587854	8	10	Y	8	10				









TABLE A10-1 SUMMARY OF ANALYTICAL RESULTS

Location ID	SYS SAMPLE CODE	SDG	Start Depth	End Depth	CHEMICAL_NAME RESULT_UNIT			PROTACTINIUM 231 pci/g				RADIUM-223 pci/g				RADIUM-224 pci/g				RADIUM-226 pci/g			
					Composite (Y/N)	Start Depth Below DID	End Depth Below DID	RESULT	QUALIFIERS	RESULT ERROR DELTA	MDL	RESULT	QUALIFIERS	RESULT ERROR DELTA	MDL	RESULT	QUALIFIERS	RESULT ERROR DELTA	MDL	RESULT	QUALIFIERS	RESULT ERROR DELTA	MDL
A1-PB-115-A	A1-PB-115-A-0-2-N	530227	0	2	Y	0	2												0.719	J-	0.158	0.115	
A1-PB-115-A	A1-PB-115-A-2-4-N	530227	2	4	Y	2	4												1		0.154	0.0832	
A1-PB-115-A	A1-PB-115-A-4-6-N	530227	4	6	Y	4	6												1.29		0.15	0.0992	
A1-PB-115-A	A1-PB-115-A-6-8-N	530227	6	8	Y	6	8												1.15		0.144	0.0957	
A1-PB-115-A	A1-PB-115-A-8-10-N	530227	8	10	Y	8	10												1.12		0.144	0.0892	
A1-PB-115-A	A1-PB-115-A-10-12-N	530227	10	12	Y	10	12												1.15		0.148	0.082	
A1-PB-115-A	A1-PB-115-A-12-14-N	530227	12	14	Y	12	14												1.18		0.141	0.0832	
A1-PB-115-A	A1-PB-115-A-14-16-N	530227	14	16	Y	14	16												1.06		0.127	0.0853	
A1-PB-115-A	A1-PB-115-A-16-18-N	530227	16	18	Y	16	18												1.24		0.204	0.114	
A1-PB-115-A	A1-PB-115-A-18-20-N	530227	18	20	Y	18	20												1.02		0.131	0.0921	
A1-PB-115-A	A1-PB-115-A-20-22-N	530227	20	22	Y	20	22												0.967		0.129	0.0826	
A1-PB-115-A	A1-PB-115-A-22-24-N	530227	22	24	Y	22	24												0.571		0.11	0.0775	
A1-PB-115-A	A1-PB-115-A-24-25-N	530227	24	25	Y	24	25												0.497		0.0789	0.0524	
A1-PB-115-B	A1-PB-115-B-0-0.5-N	558052	0	0.5	N	0	0.5												0.971		0.15	0.263	
A1-PB-115-B	A1-PB-115-B-1-1.5-N	558052	1	1.5	N	1	1.5												1.13		0.138	0.0781	
A1-PB-115-B	A1-PB-115-B-2-4-N	558052	2	4	Y	2	4												1.03		0.121	0.0745	
A1-PB-115-B	A1-PB-115-B-4-6-N	558052	4	6	Y	4	6												1.25		0.251	0.144	
A1-PB-115-B	A1-PB-115-B-6-8-N	558052	6	8	Y	6	8												1.19		0.138	0.0907	
A1-PB-115-B	A1-PB-115-B-8-10-N	558052	8	10	Y	8	10												1.27		0.166	0.101	
A1-PB-115-B	A1-PB-115-B-10-12-N	558052	10	12	Y	10	12												1.16		0.151	0.102	
A1-PB-115-B	A1-PB-115-B-12-14-N	558052	12	14	Y	12	14												1.01		0.143	0.0904	
A1-PB-115-B	A1-PB-115-B-14-16-N	558052	14	16	Y	14	16												1.15		0.15	0.0964	
A1-PB-115-B	A1-PB-115-B-16-18-N	558052	16	18	Y	16	18												1.12		0.129	0.0747	
A1-PB-115-B	A1-PB-115-B-18-20-N	558052	18	20	Y	18	20												0.924		0.132	0.0747	
A1-PB-115-C	A1-PB-115-C-0.5-1-N	557200	0.5	1	N	0.5	1												1.02		0.124	0.0796	
A1-PB-115-C	A1-PB-115-C-1-1.5-N	557200	1	1.5	N	1	1.5												0.944		0.15	0.0897	
A1-PB-115-C	A1-PB-115-C-2-4-N	557200	2	4	Y	2	4												1.22		0.123	0.0786	
A1-PB-115-C	A1-PB-115-C-4-6-N	557200	4	6	Y	4	6												1.19		0.145	0.0791	
A1-PB-115-C	A1-PB-115-C-6-8-N	557200	6	8	Y	6	8												1.12		0.139	0.0861	
A1-PB-115-C	A1-PB-115-C-8-10-N	557200	8	10	Y	8	10												1.52		0.167	0.106	
A1-PB-115-C	A1-PB-115-C-10-12-N	557200	10	12	Y	10	12												1.22		0.182	0.104	
A1-PB-115-C	A1-PB-115-C-12-14-N	557200	12	14	Y	12	14												1.11		0.135	0.071	
A1-PB-115-C	A1-PB-115-C-14-16-N	557200	14	16	Y	14	16												1.14		0.136	0.104	
A1-PB-115-C	A1-PB-115-C-16-18-N	557200	16	18	Y	16	18												1.03		0.143	0.0831	
A1-PB-115-C	A1-PB-115-C-18-20-N	557200	18	20	Y	18	20												0.925		0.135	0.0998	
A1-PB-116	A1-PB-116-0-1-N	530223	0	1	N	0	1												0.752	J-	0.115	0.0669	
A1-PB-116	A1-PB-116-1-2-N	530223	1	2	N	1	2												1.08		0.171	0.111	
A1-PB-116	A1-PB-116-2-4-N	530223	2	4	Y	2	4												1.05		0.141	0.0912	
A1-PB-116	A1-PB-116-4-6-N	530223	4	6	Y	4	6												1.16		0.142	0.0968	
A1-PB-116	A1-PB-116-6-8-N	530223	6	8	Y	6	8												1.1		0.131	0.0747	
A1-PB-116	A1-PB-116-8-10-N	530223	8	10	Y	8	10												1.05		0.153	0.0913	
A1-PB-116	A1-PB-116-10-12-N	530223	10	12	Y	10	12												1.04		0.131	0.0732	
A1-PB-116	A1-PB-116-12-14-N	530223	12	14	Y	12	14												0.884		0.105	0.0764	
A1-PB-116	A1-PB-116-14-16-N	530223	14	16	Y	14	16												0.978		0.142	0.0893	
A1-PB-116	A1-PB-116-16-18-N	530223	16	18	Y	16	18												0.829		0.125	0.0794	
A1-PB-116	A1-PB-116-18-20-N	530223	18	20	Y	18	20												0.782		0.116	0.0749	
A1-PB-116	A1-PB-116-20-22-N	530223	20	22	Y	20	22												0.995		0.14	0.0891	
AC-05	AC-05_(ES)-11-12		11	12	N																		
AC-05	FEEBRISAC-5.011-012		11	12	N			1.606512183	J		2.328602255								1.108054107	U		0.194108494	
AC-05	AC-05_(ES)-25-26		25	26	N			0.3	U		2.34												

TABLE A10-1 SUMMARY OF ANALYTICAL RESULTS

Location ID	SYS SAMPLE CODE	SDG	Start Depth	End Depth	CHEMICAL_NAME RESULT_UNIT			RADIUM-228 pci/g				THALLIUM-208 pci/g				THORIUM-228 pci/g				THORIUM-230 pci/g		
					Composite (Y/N)	Start Depth Below DID	End Depth Below DID	RESULT	QUALIFIERS	RESULT ERROR DELTA	MDL	RESULT	QUALIFIERS	RESULT_ERR OR_DELTA	MDL	RESULT	QUALIFIERS	RESULT ERROR DELTA	MDL	RESULT	QUALIFIERS	RESULT ERROR DELTA
A1-PB-115-A	A1-PB-115-A-0-2-N	530227	0	2	Y	0	2	0.705		0.304	0.2								1.17		0.434	
A1-PB-115-A	A1-PB-115-A-2-4-N	530227	2	4	Y	2	4	1.43		0.255	0.157								1.14		0.366	
A1-PB-115-A	A1-PB-115-A-4-6-N	530227	4	6	Y	4	6	1.12		0.234	0.187								1.43		0.432	
A1-PB-115-A	A1-PB-115-A-6-8-N	530227	6	8	Y	6	8	1.29		0.281	0.498								0.867		0.325	
A1-PB-115-A	A1-PB-115-A-8-10-N	530227	8	10	Y	8	10	1.27		0.213	0.175								7.62		1.03	
A1-PB-115-A	A1-PB-115-A-10-12-N	530227	10	12	Y	10	12	0.866		0.256	0.386								4.57		0.7	
A1-PB-115-A	A1-PB-115-A-12-14-N	530227	12	14	Y	12	14	0.969		0.259	0.161								6.04		0.835	
A1-PB-115-A	A1-PB-115-A-14-16-N	530227	14	16	Y	14	16	1.22		0.245	0.15								1.19		0.449	
A1-PB-115-A	A1-PB-115-A-16-18-N	530227	16	18	Y	16	18	1.1		0.325	0.253								1.33		0.405	
A1-PB-115-A	A1-PB-115-A-18-20-N	530227	18	20	Y	18	20	1.14		0.265	0.18								0.888		0.336	
A1-PB-115-A	A1-PB-115-A-20-22-N	530227	20	22	Y	20	22	1.27		0.282	0.178								0.976		0.259	
A1-PB-115-A	A1-PB-115-A-22-24-N	530227	22	24	Y	22	24	0.573		0.206	0.168								0.642		0.223	
A1-PB-115-A	A1-PB-115-A-24-25-N	530227	24	25	Y	24	25	0.585		0.189	0.128								0.917		0.405	
A1-PB-115-B	A1-PB-115-B-0-0.5-N	558052	0	0.5	N	0	0.5	1.02		0.278	0.233								1.12		0.219	
A1-PB-115-B	A1-PB-115-B-1-1.5-N	558052	1	1.5	N	1	1.5	1.24		0.202	0.143								1.28		0.384	
A1-PB-115-B	A1-PB-115-B-2-4-N	558052	2	4	Y	2	4	1.36		0.222	0.138								1.4		0.31	
A1-PB-115-B	A1-PB-115-B-4-6-N	558052	4	6	Y	4	6	0.862		0.278	0.275								1.67		0.283	
A1-PB-115-B	A1-PB-115-B-6-8-N	558052	6	8	Y	6	8	0.917		0.252	0.198								4.48		0.447	
A1-PB-115-B	A1-PB-115-B-8-10-N	558052	8	10	Y	8	10	1.07		0.274	0.179								3.07		0.525	
A1-PB-115-B	A1-PB-115-B-10-12-N	558052	10	12	Y	10	12	1.41		0.316	0.209								1.64		0.351	
A1-PB-115-B	A1-PB-115-B-12-14-N	558052	12	14	Y	12	14	1.05		0.228	0.169								0.993		0.315	
A1-PB-115-B	A1-PB-115-B-14-16-N	558052	14	16	Y	14	16	1.09		0.272	0.227								1.43		0.301	
A1-PB-115-B	A1-PB-115-B-16-18-N	558052	16	18	Y	16	18	1.03		0.221	0.146								0.985		0.224	
A1-PB-115-B	A1-PB-115-B-18-20-N	558052	18	20	Y	18	20	1.04		0.228	0.165								0.693		0.212	
A1-PB-115-C	A1-PB-115-C-0.5-1-N	557200	0.5	1	N	0.5	1	1.11		0.22	0.165								0.864		0.223	
A1-PB-115-C	A1-PB-115-C-1-1.5-N	557200	1	1.5	N	1	1.5	1.03		0.218	0.17								1.14		0.235	
A1-PB-115-C	A1-PB-115-C-2-4-N	557200	2	4	Y	2	4	0.998		0.23	0.151								1.22		0.266	
A1-PB-115-C	A1-PB-115-C-4-6-N	557200	4	6	Y	4	6	0.93		0.205	0.154								1.11		0.233	
A1-PB-115-C	A1-PB-115-C-6-8-N	557200	6	8	Y	6	8	1.01		0.177	0.159								1.93		0.33	
A1-PB-115-C	A1-PB-115-C-8-10-N	557200	8	10	Y	8	10	1.52		0.316	0.245								1.49		0.291	
A1-PB-115-C	A1-PB-115-C-10-12-N	557200	10	12	Y	10	12	1.09		0.287	0.228								1.41		0.29	
A1-PB-115-C	A1-PB-115-C-12-14-N	557200	12	14	Y	12	14	1.31		0.199	0.142								4.86		0.456	
A1-PB-115-C	A1-PB-115-C-14-16-N	557200	14	16	Y	14	16	1.01		0.312	0.208								1.59		0.223	
A1-PB-115-C	A1-PB-115-C-16-18-N	557200	16	18	Y	16	18	1.02		0.253	0.173								3.25		0.299	
A1-PB-115-C	A1-PB-115-C-18-20-N	557200	18	20	Y	18	20	0.788		0.339	0.191								1.57		0.218	
A1-PB-116	A1-PB-116-0-1-N	530223	0	1	N	0	1	1.06		0.171	0.122								2.78	J	0.602	
A1-PB-116	A1-PB-116-1-2-N	530223	1	2	N	1	2	1.09		0.316	0.209								2.69		0.508	
A1-PB-116	A1-PB-116-2-4-N	530223	2	4	Y	2	4	1.39		0.324	0.206								2.18		0.572	
A1-PB-116	A1-PB-116-4-6-N	530223	4	6	Y	4	6	1.25		0.354	0.174								1.09		0.467	
A1-PB-116	A1-PB-116-6-8-N	530223	6	8	Y	6	8	1.12		0.242	0.159								1.35		0.336	
A1-PB-116	A1-PB-116-8-10-N	530223	8	10	Y	8	10	1.34		0.285	0.175								1.22		0.314	
A1-PB-116	A1-PB-116-10-12-N	530223	10	12	Y	10	12	1.18		0.215	0.147								0.933		0.28	
A1-PB-116	A1-PB-116-12-14-N	530223	12	14	Y	12	14	1.15		0.223	0.14								0.816		0.287	
A1-PB-116	A1-PB-116-14-16-N	530223	14	16	Y	14	16	1.3		0.247	0.178								1.32		0.415	
A1-PB-116	A1-PB-116-16-18-N	530223	16	18	Y	16	18	1.18		0.215	0.163								0.568		0.219	
A1-PB-116	A1-PB-116-18-20-N	530223	18	20	Y	18	20	1.19		0.237	0.156								1.09		0.322	
A1-PB-116	A1-PB-116-20-22-N	530223	20	22	Y	20	22	0.969		0.229	0.17								0.908		0.263	
AC-05	AC-05_(ES)-11-12		11	12	N																	
AC-05	FEEBRISAC-5.011-012		11	12	N			1.273104999			0.338277746	1.037412972			0.170778314	1.265585297			0.073163261	3.277304131		
AC-05	AC-05_(ES)-25-26		25	26	N										0.916				0.0753			

TABLE A10-1 SUMMARY OF ANALYTICAL RESULTS

Location ID	SYS SAMPLE CODE	SDG	Start Depth	End Depth	Composite (Y/N)	Start Depth Below DID	End Depth Below DID	CHEMICAL_NAME
								RESULT_UNIT
MDL								
A1-PB-115-A	A1-PB-115-A-0-2-N	530227	0	2	Y	0	2	0.36
A1-PB-115-A	A1-PB-115-A-2-4-N	530227	2	4	Y	2	4	0.215
A1-PB-115-A	A1-PB-115-A-4-6-N	530227	4	6	Y	4	6	0.242
A1-PB-115-A	A1-PB-115-A-6-8-N	530227	6	8	Y	6	8	0.289
A1-PB-115-A	A1-PB-115-A-8-10-N	530227	8	10	Y	8	10	0.29
A1-PB-115-A	A1-PB-115-A-10-12-N	530227	10	12	Y	10	12	0.212
A1-PB-115-A	A1-PB-115-A-12-14-N	530227	12	14	Y	12	14	0.231
A1-PB-115-A	A1-PB-115-A-14-16-N	530227	14	16	Y	14	16	0.323
A1-PB-115-A	A1-PB-115-A-16-18-N	530227	16	18	Y	16	18	0.23
A1-PB-115-A	A1-PB-115-A-18-20-N	530227	18	20	Y	18	20	0.279
A1-PB-115-A	A1-PB-115-A-20-22-N	530227	20	22	Y	20	22	0.192
A1-PB-115-A	A1-PB-115-A-22-24-N	530227	22	24	Y	22	24	0.172
A1-PB-115-A	A1-PB-115-A-24-25-N	530227	24	25	Y	24	25	0.377
A1-PB-115-B	A1-PB-115-B-0-0.5-N	558052	0	0.5	N	0	0.5	0.169
A1-PB-115-B	A1-PB-115-B-1-1.5-N	558052	1	1.5	N	1	1.5	0.354
A1-PB-115-B	A1-PB-115-B-2-4-N	558052	2	4	Y	2	4	0.235
A1-PB-115-B	A1-PB-115-B-4-6-N	558052	4	6	Y	4	6	0.186
A1-PB-115-B	A1-PB-115-B-6-8-N	558052	6	8	Y	6	8	0.149
A1-PB-115-B	A1-PB-115-B-8-10-N	558052	8	10	Y	8	10	0.468
A1-PB-115-B	A1-PB-115-B-10-12-N	558052	10	12	Y	10	12	0.3
A1-PB-115-B	A1-PB-115-B-12-14-N	558052	12	14	Y	12	14	0.358
A1-PB-115-B	A1-PB-115-B-14-16-N	558052	14	16	Y	14	16	0.267
A1-PB-115-B	A1-PB-115-B-16-18-N	558052	16	18	Y	16	18	0.184
A1-PB-115-B	A1-PB-115-B-18-20-N	558052	18	20	Y	18	20	0.263
A1-PB-115-C	A1-PB-115-C-0.5-1-N	557200	0.5	1	N	0.5	1	0.229
A1-PB-115-C	A1-PB-115-C-1-1.5-N	557200	1	1.5	N	1	1.5	0.186
A1-PB-115-C	A1-PB-115-C-2-4-N	557200	2	4	Y	2	4	0.257
A1-PB-115-C	A1-PB-115-C-4-6-N	557200	4	6	Y	4	6	0.216
A1-PB-115-C	A1-PB-115-C-6-8-N	557200	6	8	Y	6	8	0.292
A1-PB-115-C	A1-PB-115-C-8-10-N	557200	8	10	Y	8	10	0.231
A1-PB-115-C	A1-PB-115-C-10-12-N	557200	10	12	Y	10	12	0.232
A1-PB-115-C	A1-PB-115-C-12-14-N	557200	12	14	Y	12	14	0.163
A1-PB-115-C	A1-PB-115-C-14-16-N	557200	14	16	Y	14	16	0.15
A1-PB-115-C	A1-PB-115-C-16-18-N	557200	16	18	Y	16	18	0.12
A1-PB-115-C	A1-PB-115-C-18-20-N	557200	18	20	Y	18	20	0.115
A1-PB-116	A1-PB-116-0-1-N	530223	0	1	N	0	1	0.294
A1-PB-116	A1-PB-116-1-2-N	530223	1	2	N	1	2	0.253
A1-PB-116	A1-PB-116-2-4-N	530223	2	4	Y	2	4	0.347
A1-PB-116	A1-PB-116-4-6-N	530223	4	6	Y	4	6	0.392
A1-PB-116	A1-PB-116-6-8-N	530223	6	8	Y	6	8	0.197
A1-PB-116	A1-PB-116-8-10-N	530223	8	10	Y	8	10	0.169
A1-PB-116	A1-PB-116-10-12-N	530223	10	12	Y	10	12	0.19
A1-PB-116	A1-PB-116-12-14-N	530223	12	14	Y	12	14	0.285
A1-PB-116	A1-PB-116-14-16-N	530223	14	16	Y	14	16	0.278
A1-PB-116	A1-PB-116-16-18-N	530223	16	18	Y	16	18	0.176
A1-PB-116	A1-PB-116-18-20-N	530223	18	20	Y	18	20	0.203
A1-PB-116	A1-PB-116-20-22-N	530223	20	22	Y	20	22	0.186
AC-05	AC-05_(ES)-11-12		11	12	N			
AC-05	FEEBRISAC-5.011-012		11	12	N			0.063023039
AC-05	AC-05_(ES)-25-26		25	26	N			

TABLE A10-1 SUMMARY OF ANALYTICAL RESULTS

Location ID	SYS SAMPLE CODE	SDG	Start Depth	End Depth	CHEMICAL_NAME RESULT_UNIT			THORIUM-232 pci/g				THORIUM-234 pci/g				TOTAL RADIUM pci/g				Total Thorium pci/g			
					Composite (Y/N)	Start Depth Below DID	End Depth Below DID	RESULT	QUALIFIERS	RESULT ERROR DELTA	MDL	RESULT	QUALIFIERS	RESULT ERROR DELTA	MDL	RESULT	QUALIFIERS	RESULT ERROR DELTA	MDL	RESULT	QUALIFIERS	RESULT ERROR DELTA	MDL
A1-PB-115-A	A1-PB-115-A-0-2-N	530227	0	2	Y	0	2	1.25		0.434	0.291				1.424	J-	0.462	0.2	2.42		0.868	0.291	
A1-PB-115-A	A1-PB-115-A-2-4-N	530227	2	4	Y	2	4	1.15	J	0.36	0.111				2.43		0.409	0.157	2.29	J	0.726	0.111	
A1-PB-115-A	A1-PB-115-A-4-6-N	530227	4	6	Y	4	6	1.23		0.393	0.125				2.41		0.384	0.187	2.66		0.825	0.125	
A1-PB-115-A	A1-PB-115-A-6-8-N	530227	6	8	Y	6	8	0.942		0.315	0.157				2.44		0.425	0.498	1.809		0.64	0.157	
A1-PB-115-A	A1-PB-115-A-8-10-N	530227	8	10	Y	8	10	1.23		0.417	0.135				2.39		0.357	0.175	8.85		1.447	0.135	
A1-PB-115-A	A1-PB-115-A-10-12-N	530227	10	12	Y	10	12	1.01		0.33	0.109				2.016		0.404	0.386	5.58		1.03	0.109	
A1-PB-115-A	A1-PB-115-A-12-14-N	530227	12	14	Y	12	14	1.12		0.369	0.212				2.149		0.4	0.161	7.16		1.204	0.212	
A1-PB-115-A	A1-PB-115-A-14-16-N	530227	14	16	Y	14	16	1.22		0.438	0.151				2.28		0.372	0.15	2.41		0.887	0.151	
A1-PB-115-A	A1-PB-115-A-16-18-N	530227	16	18	Y	16	18	1.18		0.377	0.18				2.34		0.529	0.253	2.51		0.782	0.18	
A1-PB-115-A	A1-PB-115-A-18-20-N	530227	18	20	Y	18	20	1.2	J	0.365	0.112				2.16		0.396	0.18	2.088	J	0.701	0.112	
A1-PB-115-A	A1-PB-115-A-20-22-N	530227	20	22	Y	20	22	1.02		0.249	0.0657				2.237		0.411	0.178	1.996		0.508	0.0657	
A1-PB-115-A	A1-PB-115-A-22-24-N	530227	22	24	Y	22	24	0.322		0.167	0.167				1.144		0.316	0.168	0.964		0.39	0.167	
A1-PB-115-A	A1-PB-115-A-24-25-N	530227	24	25	Y	24	25	0.654		0.32	0.139				1.082		0.2679	0.128	1.571		0.725	0.139	
A1-PB-115-B	A1-PB-115-B-0-0.5-N	558052	0	0.5	N	0	0.5	1.05		0.202	0.107				1.991		0.428	0.233	2.17		0.421	0.107	
A1-PB-115-B	A1-PB-115-B-1-1.5-N	558052	1	1.5	N	1	1.5	1.13		0.343	0.262				2.37		0.340	0.143	2.41		0.727	0.262	
A1-PB-115-B	A1-PB-115-B-2-4-N	558052	2	4	Y	2	4	0.993		0.275	0.258				2.39		0.343	0.138	2.393		0.585	0.258	
A1-PB-115-B	A1-PB-115-B-4-6-N	558052	4	6	Y	4	6	0.998		0.208	0.0555				2.112		0.529	0.275	2.668		0.491	0.0555	
A1-PB-115-B	A1-PB-115-B-6-8-N	558052	6	8	Y	6	8	1.05	J	0.216	0.0563				2.107		0.39	0.198	5.53	J	0.663	0.0563	
A1-PB-115-B	A1-PB-115-B-8-10-N	558052	8	10	Y	8	10	1.01		0.279	0.178				2.34		0.44	0.179	4.08		0.804	0.178	
A1-PB-115-B	A1-PB-115-B-10-12-N	558052	10	12	Y	10	12	1.48		0.318	0.212				2.57		0.467	0.209	3.12		0.669	0.212	
A1-PB-115-B	A1-PB-115-B-12-14-N	558052	12	14	Y	12	14	0.982		0.259	0.136				2.06		0.371	0.169	1.975		0.574	0.136	
A1-PB-115-B	A1-PB-115-B-14-16-N	558052	14	16	Y	14	16	0.973		0.236	0.175				2.24		0.422	0.227	2.403		0.537	0.175	
A1-PB-115-B	A1-PB-115-B-16-18-N	558052	16	18	Y	16	18	1.24		0.234	0.108				2.15		0.35	0.146	2.225		0.458	0.108	
A1-PB-115-B	A1-PB-115-B-18-20-N	558052	18	20	Y	18	20	0.784		0.18	0.134				1.964		0.36	0.165	1.477		0.392	0.134	
A1-PB-115-C	A1-PB-115-C-0.5-1-N	557200	0.5	1	N	0.5	1	1.16		0.225	0.119				2.13		0.344	0.165	2.024		0.448	0.119	
A1-PB-115-C	A1-PB-115-C-1-1.5-N	557200	1	1.5	N	1	1.5	0.96		0.203	0.104				1.974		0.368	0.17	2.1		0.438	0.104	
A1-PB-115-C	A1-PB-115-C-2-4-N	557200	2	4	Y	2	4	0.904		0.226	0.213				2.218		0.353	0.151	2.124		0.492	0.213	
A1-PB-115-C	A1-PB-115-C-4-6-N	557200	4	6	Y	4	6	0.863		0.193	0.141				2.12		0.35	0.154	1.973		0.426	0.141	
A1-PB-115-C	A1-PB-115-C-6-8-N	557200	6	8	Y	6	8	1.12		0.243	0.194				2.13		0.316	0.159	3.05		0.573	0.194	
A1-PB-115-C	A1-PB-115-C-8-10-N	557200	8	10	Y	8	10	1.2		0.251	0.165				3.04		0.483	0.245	2.69		0.542	0.165	
A1-PB-115-C	A1-PB-115-C-10-12-N	557200	10	12	Y	10	12	1.11		0.242	0.126				2.31		0.469	0.228	2.52		0.532	0.126	
A1-PB-115-C	A1-PB-115-C-12-14-N	557200	12	14	Y	12	14	0.83		0.194	0.121				2.42		0.334	0.142	5.69		0.65	0.121	
A1-PB-115-C	A1-PB-115-C-14-16-N	557200	14	16	Y	14	16	1.14		0.187	0.121				2.15		0.448	0.208	2.73		0.41	0.121	
A1-PB-115-C	A1-PB-115-C-16-18-N	557200	16	18	Y	16	18	1.07		0.173	0.0786				2.05		0.396	0.173	4.32		0.472	0.0786	
A1-PB-115-C	A1-PB-115-C-18-20-N	557200	18	20	Y	18	20	0.902		0.164	0.0831				1.713		0.474	0.191	2.472		0.382	0.0831	
A1-PB-116	A1-PB-116-0-1-N	530223	0	1	N	0	1	0.783		0.324	0.193				1.812	J-	0.286	0.122	3.563	J	0.926	0.193	
A1-PB-116	A1-PB-116-1-2-N	530223	1	2	N	1	2	0.927		0.303	0.191				2.17		0.487	0.209	3.617		0.811	0.191	
A1-PB-116	A1-PB-116-2-4-N	530223	2	4	Y	2	4	1.44		0.465	0.287				2.44		0.465	0.206	3.62		1.037	0.287	
A1-PB-116	A1-PB-116-4-6-N	530223	4	6	Y	4	6	0.966		0.43	0.314				2.41		0.496	0.174	2.056		0.897	0.314	
A1-PB-116	A1-PB-116-6-8-N	530223	6	8	Y	6	8	0.886		0.267	0.122				2.22		0.373	0.159	2.236		0.603	0.122	
A1-PB-116	A1-PB-116-8-10-N	530223	8	10	Y	8	10	1.21		0.308	0.121				2.39		0.438	0.175	2.43		0.622	0.121	
A1-PB-116	A1-PB-116-10-12-N	530223	10	12	Y	10	12	1.12		0.295	0.119				2.22		0.346	0.147	2.053		0.575	0.119	
A1-PB-116	A1-PB-116-12-14-N	530223	12	14	Y	12	14	0.816		0.259	0.144				2.034		0.328	0.14	1.632		0.546	0.144	
A1-PB-116	A1-PB-116-14-16-N	530223	14	16	Y	14	16	0.836		0.325	0.183				2.278		0.389	0.178	2.156		0.74	0.183	
A1-PB-116	A1-PB-116-16-18-N	530223	16	18	Y	16	18	1.36		0.318	0.0801				2.009		0.34	0.163	1.928		0.537	0.0801	
A1-PB-116	A1-PB-116-18-20-N	530223	18	20	Y	18	20	1.18		0.331	0.183				1.972		0.353	0.156	2.27		0.653	0.183	
A1-PB-116	A1-PB-116-20-22-N	530223	20	22	Y	20	22	1.27		0.296	0.108				1.964		0.369	0.17	2.178		0.559	0.108	
AC-05	AC-05_(ES)-11-12		11	12	N							0.822	U	2.38									
AC-05	FEEBRISAC-5.011-012		11	12	N			1.042694976	J		0.058524651				2.38				4.32				
AC-05	AC-05_(ES)-25-26		25	26	N																		

TABLE A10-1 SUMMARY OF ANALYTICAL RESULTS

Location ID	SYS SAMPLE CODE	SDG	Start Depth	End Depth	CHEMICAL_NAME RESULT_UNIT			URANIUM pci/g				URANIUM 233 AND 234 pci/g				URANIUM 235 AND 236 pci/g				URANIUM-234 pci/g			
					Composite (Y/N)	Start Depth Below DID	End Depth Below DID	RESULT	QUALIFIERS	RESULT ERROR DELTA	MDL	RESULT	QUALIFIERS	RESULT ERROR DELTA	MDL	RESULT	QUALIFIERS	RESULT ERROR DELTA	MDL	RESULT	QUALIFIERS	RESULT ERROR DELTA	MDL
A1-PB-115-A	A1-PB-115-A-0-2-N	530227	0	2	Y	0	2																
A1-PB-115-A	A1-PB-115-A-2-4-N	530227	2	4	Y	2	4																
A1-PB-115-A	A1-PB-115-A-4-6-N	530227	4	6	Y	4	6																
A1-PB-115-A	A1-PB-115-A-6-8-N	530227	6	8	Y	6	8																
A1-PB-115-A	A1-PB-115-A-8-10-N	530227	8	10	Y	8	10																
A1-PB-115-A	A1-PB-115-A-10-12-N	530227	10	12	Y	10	12																
A1-PB-115-A	A1-PB-115-A-12-14-N	530227	12	14	Y	12	14																
A1-PB-115-A	A1-PB-115-A-14-16-N	530227	14	16	Y	14	16																
A1-PB-115-A	A1-PB-115-A-16-18-N	530227	16	18	Y	16	18																
A1-PB-115-A	A1-PB-115-A-18-20-N	530227	18	20	Y	18	20																
A1-PB-115-A	A1-PB-115-A-20-22-N	530227	20	22	Y	20	22																
A1-PB-115-A	A1-PB-115-A-22-24-N	530227	22	24	Y	22	24																
A1-PB-115-A	A1-PB-115-A-24-25-N	530227	24	25	Y	24	25																
A1-PB-115-B	A1-PB-115-B-0-0.5-N	558052	0	0.5	N	0	0.5																
A1-PB-115-B	A1-PB-115-B-1-1.5-N	558052	1	1.5	N	1	1.5																
A1-PB-115-B	A1-PB-115-B-2-4-N	558052	2	4	Y	2	4																
A1-PB-115-B	A1-PB-115-B-4-6-N	558052	4	6	Y	4	6																
A1-PB-115-B	A1-PB-115-B-6-8-N	558052	6	8	Y	6	8																
A1-PB-115-B	A1-PB-115-B-8-10-N	558052	8	10	Y	8	10																
A1-PB-115-B	A1-PB-115-B-10-12-N	558052	10	12	Y	10	12																
A1-PB-115-B	A1-PB-115-B-12-14-N	558052	12	14	Y	12	14																
A1-PB-115-B	A1-PB-115-B-14-16-N	558052	14	16	Y	14	16																
A1-PB-115-B	A1-PB-115-B-16-18-N	558052	16	18	Y	16	18																
A1-PB-115-B	A1-PB-115-B-18-20-N	558052	18	20	Y	18	20																
A1-PB-115-C	A1-PB-115-C-0.5-1-N	557200	0.5	1	N	0.5	1																
A1-PB-115-C	A1-PB-115-C-1-1.5-N	557200	1	1.5	N	1	1.5																
A1-PB-115-C	A1-PB-115-C-2-4-N	557200	2	4	Y	2	4																
A1-PB-115-C	A1-PB-115-C-4-6-N	557200	4	6	Y	4	6																
A1-PB-115-C	A1-PB-115-C-6-8-N	557200	6	8	Y	6	8																
A1-PB-115-C	A1-PB-115-C-8-10-N	557200	8	10	Y	8	10																
A1-PB-115-C	A1-PB-115-C-10-12-N	557200	10	12	Y	10	12																
A1-PB-115-C	A1-PB-115-C-12-14-N	557200	12	14	Y	12	14																
A1-PB-115-C	A1-PB-115-C-14-16-N	557200	14	16	Y	14	16																
A1-PB-115-C	A1-PB-115-C-16-18-N	557200	16	18	Y	16	18																
A1-PB-115-C	A1-PB-115-C-18-20-N	557200	18	20	Y	18	20																
A1-PB-116	A1-PB-116-0-1-N	530223	0	1	N	0	1																
A1-PB-116	A1-PB-116-1-2-N	530223	1	2	N	1	2																
A1-PB-116	A1-PB-116-2-4-N	530223	2	4	Y	2	4																
A1-PB-116	A1-PB-116-4-6-N	530223	4	6	Y	4	6																
A1-PB-116	A1-PB-116-6-8-N	530223	6	8	Y	6	8																
A1-PB-116	A1-PB-116-8-10-N	530223	8	10	Y	8	10																
A1-PB-116	A1-PB-116-10-12-N	530223	10	12	Y	10	12																
A1-PB-116	A1-PB-116-12-14-N	530223	12	14	Y	12	14																
A1-PB-116	A1-PB-116-14-16-N	530223	14	16	Y	14	16																
A1-PB-116	A1-PB-116-16-18-N	530223	16	18	Y	16	18																
A1-PB-116	A1-PB-116-18-20-N	530223	18	20	Y	18	20																
A1-PB-116	A1-PB-116-20-22-N	530223	20	22	Y	20	22																
AC-05	AC-05_(ES)-11-12		11	12	N							0.616	J		0.0527	0.269	U		0.645				
AC-05	FEEBRISAC.5.011-012		11	12	N			0.849359992	J		0.039024979								0.801273188	J		0.052972936	
AC-05	AC-05_(ES)-25-26		25	26	N			0.927			1.67	0.44	J		0.0512	0.0304	U		0.466				

TABLE A10-1 SUMMARY OF ANALYTICAL RESULTS

Location ID	SYS SAMPLE CODE	SDG	Start Depth	End Depth	CHEMICAL_NAME RESULT_UNIT		URANIUM-235 pci/g				
					Composite (Y/N)	Start Depth Below DID	End Depth Below DID	RESULT	QUALIFIERS	RESULT ERROR DELTA	MDL
A1-PB-115-A	A1-PB-115-A-0-2-N	530227	0	2	Y	0	2				
A1-PB-115-A	A1-PB-115-A-2-4-N	530227	2	4	Y	2	4				
A1-PB-115-A	A1-PB-115-A-4-6-N	530227	4	6	Y	4	6				
A1-PB-115-A	A1-PB-115-A-6-8-N	530227	6	8	Y	6	8				
A1-PB-115-A	A1-PB-115-A-8-10-N	530227	8	10	Y	8	10				
A1-PB-115-A	A1-PB-115-A-10-12-N	530227	10	12	Y	10	12				
A1-PB-115-A	A1-PB-115-A-12-14-N	530227	12	14	Y	12	14				
A1-PB-115-A	A1-PB-115-A-14-16-N	530227	14	16	Y	14	16				
A1-PB-115-A	A1-PB-115-A-16-18-N	530227	16	18	Y	16	18				
A1-PB-115-A	A1-PB-115-A-18-20-N	530227	18	20	Y	18	20				
A1-PB-115-A	A1-PB-115-A-20-22-N	530227	20	22	Y	20	22				
A1-PB-115-A	A1-PB-115-A-22-24-N	530227	22	24	Y	22	24				
A1-PB-115-A	A1-PB-115-A-24-25-N	530227	24	25	Y	24	25				
A1-PB-115-B	A1-PB-115-B-0-0.5-N	558052	0	0.5	N	0	0.5				
A1-PB-115-B	A1-PB-115-B-1-1.5-N	558052	1	1.5	N	1	1.5				
A1-PB-115-B	A1-PB-115-B-2-4-N	558052	2	4	Y	2	4				
A1-PB-115-B	A1-PB-115-B-4-6-N	558052	4	6	Y	4	6				
A1-PB-115-B	A1-PB-115-B-6-8-N	558052	6	8	Y	6	8				
A1-PB-115-B	A1-PB-115-B-8-10-N	558052	8	10	Y	8	10				
A1-PB-115-B	A1-PB-115-B-10-12-N	558052	10	12	Y	10	12				
A1-PB-115-B	A1-PB-115-B-12-14-N	558052	12	14	Y	12	14				
A1-PB-115-B	A1-PB-115-B-14-16-N	558052	14	16	Y	14	16				
A1-PB-115-B	A1-PB-115-B-16-18-N	558052	16	18	Y	16	18				
A1-PB-115-B	A1-PB-115-B-18-20-N	558052	18	20	Y	18	20				
A1-PB-115-C	A1-PB-115-C-0.5-1-N	557200	0.5	1	N	0.5	1				
A1-PB-115-C	A1-PB-115-C-1-1.5-N	557200	1	1.5	N	1	1.5				
A1-PB-115-C	A1-PB-115-C-2-4-N	557200	2	4	Y	2	4				
A1-PB-115-C	A1-PB-115-C-4-6-N	557200	4	6	Y	4	6				
A1-PB-115-C	A1-PB-115-C-6-8-N	557200	6	8	Y	6	8				
A1-PB-115-C	A1-PB-115-C-8-10-N	557200	8	10	Y	8	10				
A1-PB-115-C	A1-PB-115-C-10-12-N	557200	10	12	Y	10	12				
A1-PB-115-C	A1-PB-115-C-12-14-N	557200	12	14	Y	12	14				
A1-PB-115-C	A1-PB-115-C-14-16-N	557200	14	16	Y	14	16				
A1-PB-115-C	A1-PB-115-C-16-18-N	557200	16	18	Y	16	18				
A1-PB-115-C	A1-PB-115-C-18-20-N	557200	18	20	Y	18	20				
A1-PB-116	A1-PB-116-0-1-N	530223	0	1	N	0	1				
A1-PB-116	A1-PB-116-1-2-N	530223	1	2	N	1	2				
A1-PB-116	A1-PB-116-2-4-N	530223	2	4	Y	2	4				
A1-PB-116	A1-PB-116-4-6-N	530223	4	6	Y	4	6				
A1-PB-116	A1-PB-116-6-8-N	530223	6	8	Y	6	8				
A1-PB-116	A1-PB-116-8-10-N	530223	8	10	Y	8	10				
A1-PB-116	A1-PB-116-10-12-N	530223	10	12	Y	10	12				
A1-PB-116	A1-PB-116-12-14-N	530223	12	14	Y	12	14				
A1-PB-116	A1-PB-116-14-16-N	530223	14	16	Y	14	16				
A1-PB-116	A1-PB-116-16-18-N	530223	16	18	Y	16	18				
A1-PB-116	A1-PB-116-18-20-N	530223	18	20	Y	18	20				
A1-PB-116	A1-PB-116-20-22-N	530223	20	22	Y	20	22				
AC-05	AC-05_(ES)-11-12		11	12	N						
AC-05	FEEBRISAC.5.011-012		11	12	N			0.053988042	J		0.055390731
AC-05	AC-05_(ES)-25-26		25	26	N						

TABLE A10-1 SUMMARY OF ANALYTICAL RESULTS

Location ID	SYS SAMPLE CODE	SDG	Start Depth	End Depth	Composite (Y/N)	Start Depth Below DID	End Depth Below DID	CHEMICAL_NAME RESULT_UNIT				ACTINIUM 227 pci/g				ACTINIUM 228 pci/g				BISMUTH-212 pci/g				BISMUTH-214 pci/g			
								RESULT	QUALIFIERS	RESULT ERROR DELTA	MDL	RESULT	QUALIFIERS	RESULT ERROR DELTA	MDL	RESULT	QUALIFIERS	RESULT ERROR DELTA	MDL	RESULT	QUALIFIERS	RESULT ERROR DELTA	MDL				
AC-05	FEEBRISAC-5.025-026		25	26	N			0.099079131	J		0.055270268								0.801649094				0.172090231				
WL-103-MH	WL-103-5		5	5	N			0.89	U		0.89				1.89	U		1.89	1.23				0.34				
WL-103-MH	WL-103-5-RERUN		5	5	N																						
WL-103-MH	WL-103-10		10	10	N			1.4	U		1.4				2.45	U		2.45	0.99	U			0.99				
WL-103-MH	WL-103-10-RERUN		10	10	N																						
WL-104-MH	WL-104-5		5	5	N			0.6	U		0.6				1.26	U		1.26	0.68				0.3				
WL-104-MH	WL-104-20		20	20	N			0.59	U		0.59				1.65	U		1.65	0.6				0.34				
WL-104-MH	WL-104-20-RERUN		20	20	N																						

TABLE A10-1 SUMMARY OF ANALYTICAL RESULTS

Location ID	SYS SAMPLE CODE	SDG	Start Depth	End Depth	CHEMICAL_NAME RESULT_UNIT			LEAD-210 pci/g				LEAD-212 pci/g				LEAD-214 pci/g				POTASSIUM-40 pci/g				
					Composite (Y/N)	Start Depth Below DID	End Depth Below DID	RESULT	QUALIFIERS	RESULT ERROR DELTA	MDL	RESULT	QUALIFIERS	RESULT ERROR DELTA	MDL	RESULT	QUALIFIERS	RESULT ERROR DELTA	MDL	RESULT	QUALIFIERS	RESULT ERROR DELTA	MDL	
AC-05	FEEBRISAC-5.025-026		25	26	N			2.35268585			1.72084516	0.849467881			0.206640311					14.62040564				0.67171615
WL-103-MH	WL-103-5		5	5	N			1.82			1.75	0.96			0.23	1.13			0.33	16.6				2
WL-103-MH	WL-103-5-RERUN		5	5	N																			
WL-103-MH	WL-103-10		10	10	N			43.8	U		43.8	0.56			0.33	0.71			0.47	10.9				3
WL-103-MH	WL-103-10-RERUN		10	10	N																			
WL-104-MH	WL-104-5		5	5	N			1.17	U		1.17	0.61			0.16	0.92			0.31	7.12				1.86
WL-104-MH	WL-104-20		20	20	N			1.29	U		1.29	0.81			0.2	0.36			0.26	14.7				2.07
WL-104-MH	WL-104-20-RERUN		20	20	N																			



TABLE A10-1 SUMMARY OF ANALYTICAL RESULTS

Location ID	SYS SAMPLE CODE	SDG	Start Depth	End Depth	Composite (Y/N)	Start Depth Below DID	End Depth Below DID	PROTACTINIUM 231 pci/g				RADIUM-223 pci/g				RADIUM-224 pci/g				RADIUM-226 pci/g			
								CHEMICAL_NAME	RESULT_UNIT	RESULT	QUALIFIERS	RESULT ERROR DELTA	MDL	RESULT	QUALIFIERS	RESULT ERROR DELTA	MDL	RESULT	QUALIFIERS	RESULT ERROR DELTA	MDL	RESULT	QUALIFIERS
AC-05	FEEBRISAC-5.025-026		25	26	N														0.801649094	U		0.172090231	
WL-103-MH	WL-103-5		5	5	N			4.52	U		4.52	9.63	U		9.63	4.8	U		4.8	1.17		0.34	
WL-103-MH	WL-103-5-RERUN		5	5	N																		
WL-103-MH	WL-103-10		10	10	N			8.51	U		8.51	15.56	U		15.56	3.75	U		3.75	0.81		0.53	
WL-103-MH	WL-103-10-RERUN		10	10	N																		
WL-104-MH	WL-104-5		5	5	N			2.8	U		2.8	7.84	U		7.84	1.29	U		1.29	0.78		0.3	
WL-104-MH	WL-104-20		20	20	N			3.6	U		3.6	6.49	U		6.49	2.77	U		2.77	0.39		0.34	
WL-104-MH	WL-104-20-RERUN		20	20	N																		

TABLE A10-1 SUMMARY OF ANALYTICAL RESULTS

Location ID	SYS SAMPLE CODE	SDG	Start Depth	End Depth	Composite (Y/N)	Start Depth Below DID	End Depth Below DID	RADIUM-228 pci/g				THALLIUM-208 pci/g				THORIUM-228 pci/g				THORIUM-230 pci/g		
								RESULT	QUALIFIERS	RESULT ERROR DELTA	MDL	RESULT	QUALIFIERS	RESULT_ERR OR_DELTA	MDL	RESULT	QUALIFIERS	RESULT ERROR DELTA	MDL	RESULT	QUALIFIERS	RESULT ERROR DELTA
AC-05	FEEBRISAC-5.025-026		25	26	N			0.843686621			0.296983424	0.784425652			0.116911486					1.201605983		
WL-103-MH	WL-103-5		5	5	N			1.19	U		1.19	0.31	U		0.31							
WL-103-MH	WL-103-5-RERUN		5	5	N										1.12				0.32	1.42		
WL-103-MH	WL-103-10		10	10	N			1.26	U		1.26	0.36	U		0.36							
WL-103-MH	WL-103-10-RERUN		10	10	N										0.3				0.14	7.52		
WL-104-MH	WL-104-5		5	5	N			0.84	U		0.84	0.27			0.13	1.07			0.27	3.08		
WL-104-MH	WL-104-20		20	20	N			0.92	U		0.92	0.23			0.16							
WL-104-MH	WL-104-20-RERUN		20	20	N										0.63				0.3	0.98		

TABLE A10-1 SUMMARY OF ANALYTICAL RESULTS

CHEMICAL_NAME RESULT_UNIT								
Location ID	SYS SAMPLE CODE	SDG	Start Depth	End Depth	Composite (Y/N)	Start Depth Below DID	End Depth Below DID	MDL
AC-05	FEEBRISAC-5.025-026		25	26	N			0.048888707
WL-103-MH	WL-103-5		5	5	N			
WL-103-MH	WL-103-5-RERUN		5	5	N			0.22
WL-103-MH	WL-103-10		10	10	N			
WL-103-MH	WL-103-10-RERUN		10	10	N			0.16
WL-104-MH	WL-104-5		5	5	N			0.21
WL-104-MH	WL-104-20		20	20	N			
WL-104-MH	WL-104-20-RERUN		20	20	N			0.18



TABLE A10-1 SUMMARY OF ANALYTICAL RESULTS

Location ID	SYS SAMPLE CODE	SDG	Start Depth	End Depth	Composite (Y/N)	Start Depth Below DID	End Depth Below DID	CHEMICAL_NAME RESULT_UNIT				URANIUM pci/g				URANIUM 233 AND 234 pci/g				URANIUM 235 AND 236 pci/g				URANIUM-234 pci/g			
								RESULT	QUALIFIERS	RESULT ERROR DELTA	MDL	RESULT	QUALIFIERS	RESULT ERROR DELTA	MDL	RESULT	QUALIFIERS	RESULT ERROR DELTA	MDL	RESULT	QUALIFIERS	RESULT ERROR DELTA	MDL	RESULT	QUALIFIERS	RESULT ERROR DELTA	MDL
AC-05	FEEBRISAC-5.025-026		25	26	N																0.476299107	J			0.085808466		
WL-103-MH	WL-103-5		5	5	N			1.6			0.16				0.21			0.16			1.95			0.2			
WL-103-MH	WL-103-5-RERUN		5	5	N																						
WL-103-MH	WL-103-10		10	10	N			1.12			0.14				0.23			0.16			1.41			0.19			
WL-103-MH	WL-103-10-RERUN		10	10	N																						
WL-104-MH	WL-104-5		5	5	N			0.7			0.14				0.16			0.18			1.19			0.15			
WL-104-MH	WL-104-20		20	20	N			0.32			0.11				0.25			0.12			0.52			0.1			
WL-104-MH	WL-104-20-RERUN		20	20	N																						

TABLE A10-1 SUMMARY OF ANALYTICAL RESULTS

Location ID	SYS SAMPLE CODE	SDG	Start Depth	End Depth	Composite (Y/N)	Start Depth Below DID	End Depth Below DID	CHEMICAL_NAME RESULT_UNIT		URANIUM-235 pci/g	
								RESULT	QUALIFIERS	RESULT ERROR DELTA	MDL
AC-05	FEEBRISAC-5.025-026		25	26	N			0.08013329	J		0.056140704
WL-103-MH	WL-103-5		5	5	N			0.73	U		0.73
WL-103-MH	WL-103-5-RERUN		5	5	N						
WL-103-MH	WL-103-10		10	10	N			1.41	U		1.41
WL-103-MH	WL-103-10-RERUN		10	10	N						
WL-104-MH	WL-104-5		5	5	N			0.55	U		0.55
WL-104-MH	WL-104-20		20	20	N			0.56	U		0.56
WL-104-MH	WL-104-20-RERUN		20	20	N						

TABLE A10-2 PROPOSED ADDENDUM 10 ADDITIONAL BORINGS

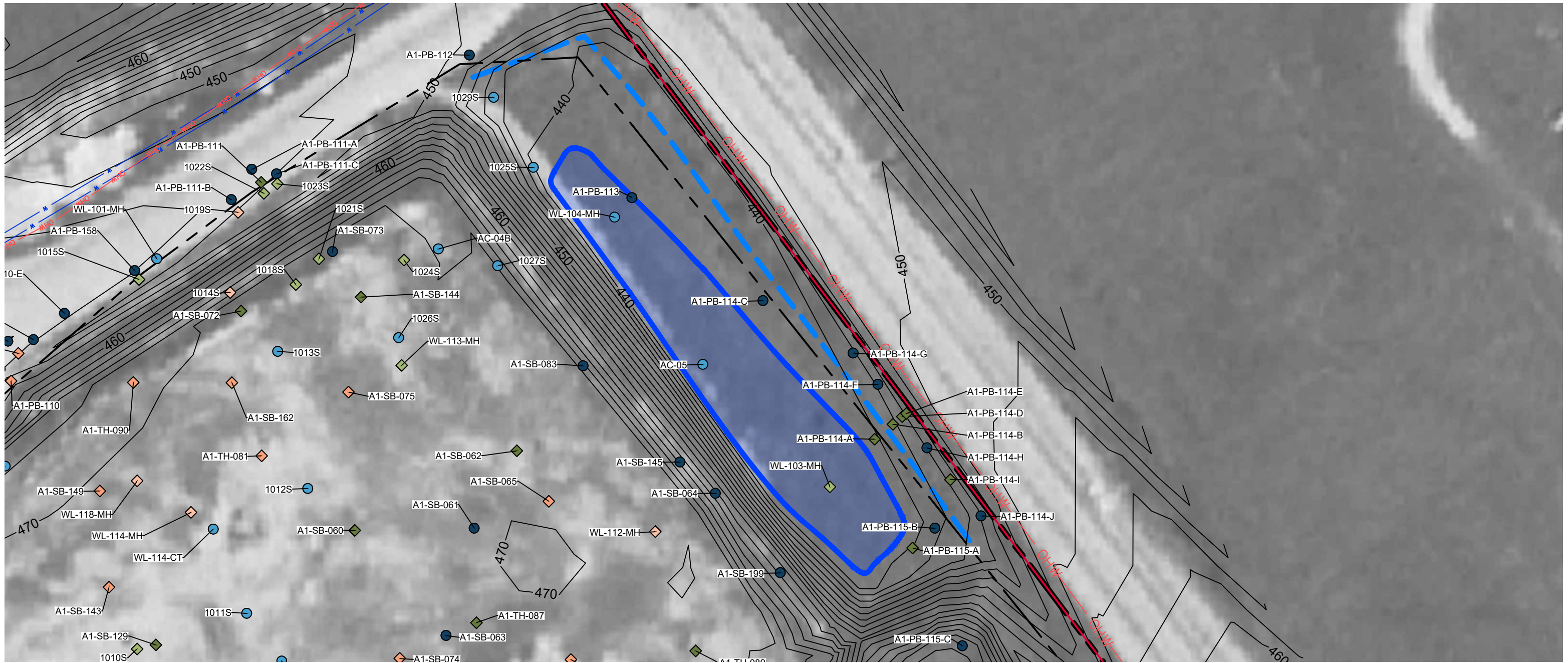
Location ID	Northing (Local Site Coordinates)	Easting (Local Site Coordinates)	Estimated Total Boring Depth (feet B2005GS)	Total Laboratory Analytical Samples	Core Scan Interval (feet B2005GS)	Downhole Gamma Interval (feet B2005GS)	Justification
A1-PB-166-A	1,069,363.04	836,947.17	12	7	0-12	-	Rush Thorium results >7.9 pCi/g from 444.3 to 438.6 ft above mean sea level within the 1973 sediment basin and surrounding area.
A1-PB-166-B	1,069,375.91	836,964.47	12	7	0-12	-	
A1-PB-166-C	1,069,388.78	836,981.77	12	7	0-12	-	
A1-PB-166-D	1,069,401.65	836,999.07	12	7	0-12	-	
A1-PB-166-E	1,069,414.52	837,016.37	12	7	0-12	-	
A1-PB-167-A	1,069,379.67	836,903.67	12	7	0-12	-	
A1-PB-167-B	1,069,396.16	836,925.83	12	7	0-12	-	
A1-PB-167-C	1,069,412.65	836,948.00	12	7	0-12	-	
A1-PB-167-D	1,069,429.14	836,970.16	12	7	0-12	-	
A1-PB-167-E	1,069,445.63	836,992.32					
A1-PB-168-A	1,069,410.20	836,878.85	12	7	0-12	-	
A1-PB-168-B	1,069,426.83	836,901.21	12	7	0-12	-	
A1-PB-168-C	1,069,443.46	836,923.57	12	7	0-12	-	
A1-PB-168-D	1,069,460.10	836,945.92	12	7	0-12	-	
A1-PB-168-E	1,069,476.73	836,968.28	12	7	0-12	-	
A1-PB-169-A	1,069,440.94	836,854.32	12	7	0-12	-	
A1-PB-169-B	1,069,457.66	836,876.80	12	7	0-12	-	
A1-PB-169-C	1,069,474.38	836,899.28	12	7	0-12	-	
A1-PB-169-D	1,069,491.11	836,921.76	12	7	0-12	-	
A1-PB-169-E	1,069,507.83	836,944.24	12	7	0-12	-	
A1-PB-170-A	1,069,472.16	836,830.43	12	7	0-12	-	
A1-PB-170-B	1,069,488.85	836,852.87	12	7	0-12	-	
A1-PB-170-C	1,069,505.54	836,875.31	12	7	0-12	-	
A1-PB-170-D	1,069,522.24	836,897.75	12	7	0-12	-	
A1-PB-170-E	1,069,538.93	836,920.19	12	7	0-12	-	
A1-PB-171-A	1,069,503.69	836,806.97	12	7	0-12	-	
A1-PB-171-B	1,069,520.39	836,829.41	12	7	0-12	-	
A1-PB-171-C	1,069,537.08	836,851.85	12	7	0-12	-	
A1-PB-171-D	1,069,553.77	836,874.29	12	7	0-12	-	
A1-PB-171-E	1,069,570.47	836,896.73	12	7	0-12	-	
<b>30</b>	-	-	-	<b>203</b>	-	-	

---

## FIGURES

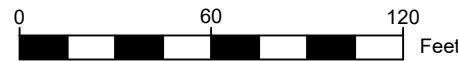
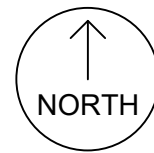
---





**LEGEND**

- PROPERTY BOUNDARY
- SITE BOUNDARY
- OU-1 AREA 1 BOUNDARY
- 1973-09-19 TOPOGRAPHY
- EXISTING STORMWATER CHANNEL
- EXISTING OVERHEAD POWERLINE
- FORMER SEDIMENT BASIN (APPROX. EL. = 438.5' AMSL)



NOTES:  
1973-09-19 TOPOGRAPHY AND IMAGERY PROVIDED BY COOPER AERIAL SURVEYS, CO

PRE-D.I. BORING	D.I. BORING	MAXIMUM RESULT X (pCi/g)
		X ≤ 7.9
		X > 7.9 AND X ≤ 52.9
		X > 52.9



301 Plainfield Rd, Ste 350, Syracuse, NY 13212  
Ph: 315-451-9560  
Missouri State Certificate of Authority #: 2019041541



Feezor Engineering, Inc.  
3377 Hollenberg Dr, Bridgeton, MO 63044  
Ph: 217-483-3118  
Missouri State Certificate of Authority #: E-200912211

PROJECT  
WEST LAKE LANDFILL  
SUPERFUND SITE  
OU-1 REMEDIAL DESIGN  
BRIDGETON, ST. LOUIS COUNTY, MO

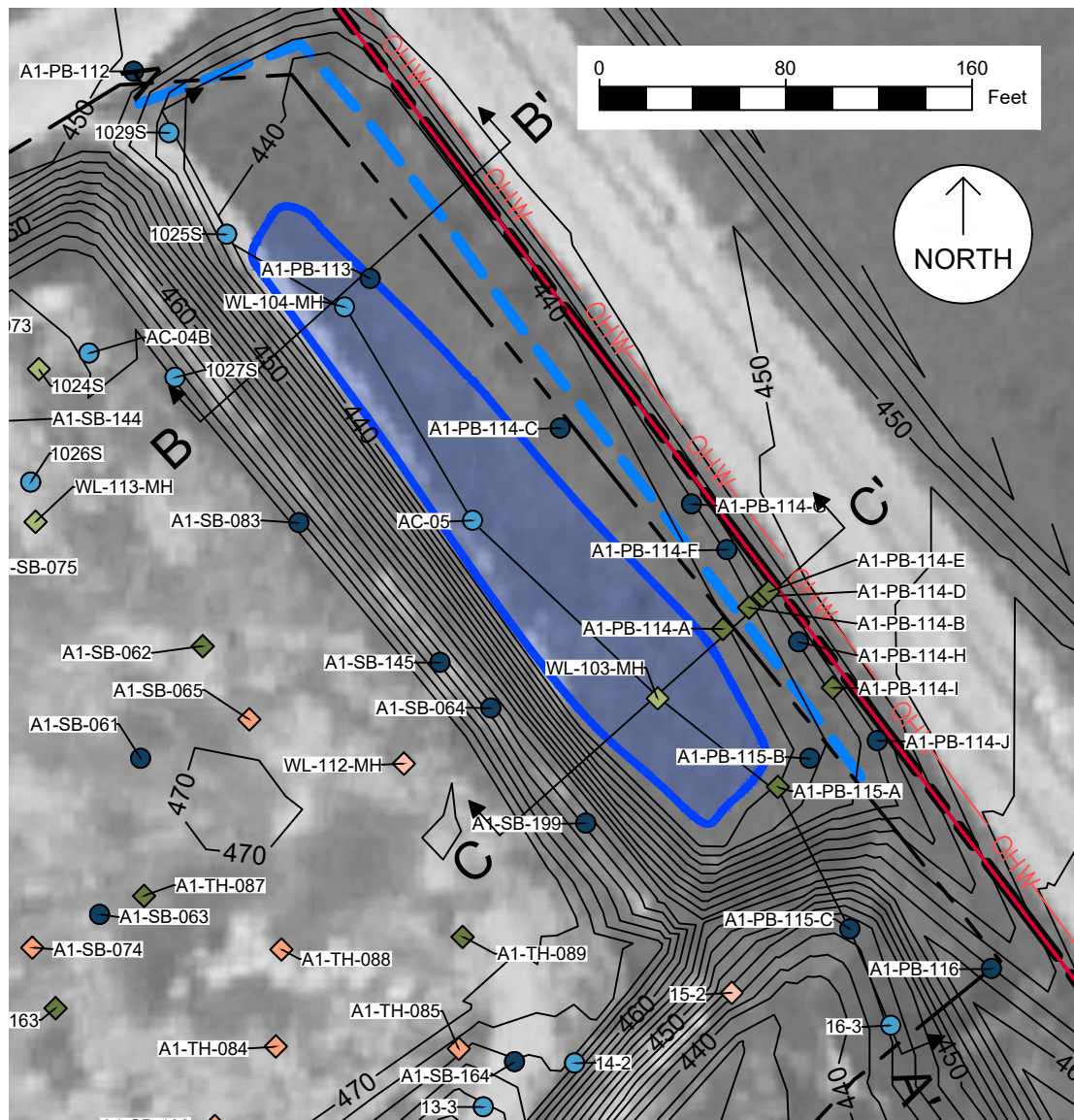
PREPARED FOR  
THE UNITED STATES ENVIRONMENTAL  
PROTECTION AGENCY REGION VII  
ON BEHALF OF  
WEST LAKE LANDFILL OU-1  
RESPONDENTS



FIGURE #  
**A10-1**  
DRAWN BY:  
APPROVED BY:  
DATE:

FIGURE TITLE  
**FORMER SEDIMENT BASIN NEAR A1-PB-114 SERIES**

SRC: figures\_#20230816PML1030.dwg DATE: 9/14/2023 3:47:09 PM



**LEGEND**

- PROPERTY BOUNDARY
- SITE BOUNDARY
- OU-1 AREA 1 BOUNDARY
- 2022-12-15 TOPOGRAPHY
- 1973-09-19 TOPOGRAPHY
- EXISTING STORMWATER CHANNEL
- EXISTING OVERHEAD POWERLINE
- FORMER SEDIMENT BASIN (APPROX. EL. = 438.5' AMSL)

- | PRE-D.I. BORING   | D.I. BORING | MAXIMUM RESULT X (pCi/g)           |
|---|-------------|------------------------------------|
|   |             | $X \leq 7.9$                       |
|   |             | $X > 7.9 \text{ AND } X \leq 52.9$ |
|   |             | $X > 52.9$                         |
| SAMPLE INTERVAL GREATER THAN 7.9 PC/G AND LESS THAN 52.9 PC/G (WITH INFERRED EXTENTS) |             |                                    |

**NOTES:**  
 1973-09-19 TOPOGRAPHY AND IMAGERY PROVIDED BY COOPER AERIAL SURVEYS, CO  
 2022-12-15 TOPOGRAPHY PROVIDED BY FIRMATEK

301 Plainfield Rd, Ste 350, Syracuse, NY 13212  
 Ph: 315-451-9560  
 Missouri State Certificate of Authority #: 2019041541

Feezor Engineering, Inc.  
 3377 Hollenberg Dr, Bridgeton, MO 63044  
 Ph: 217-483-3118  
 Missouri State Certificate of Authority #: E-200912211

**PROJECT**  
 WEST LAKE LANDFILL  
 SUPERFUND SITE  
 OU-1 REMEDIAL DESIGN  
 BRIDGETON, ST. LOUIS COUNTY, MO

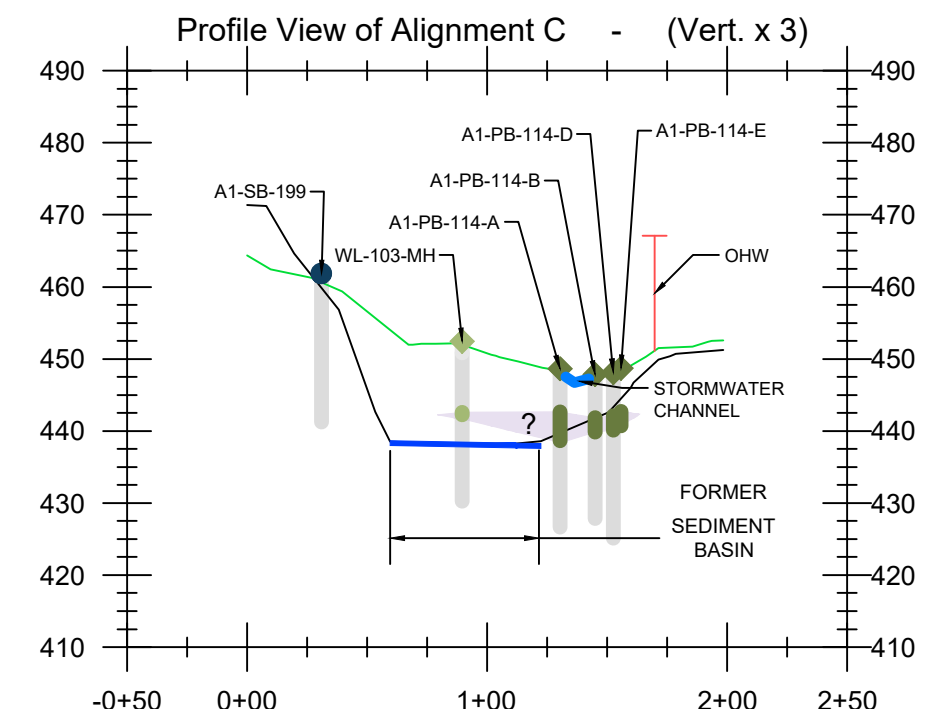
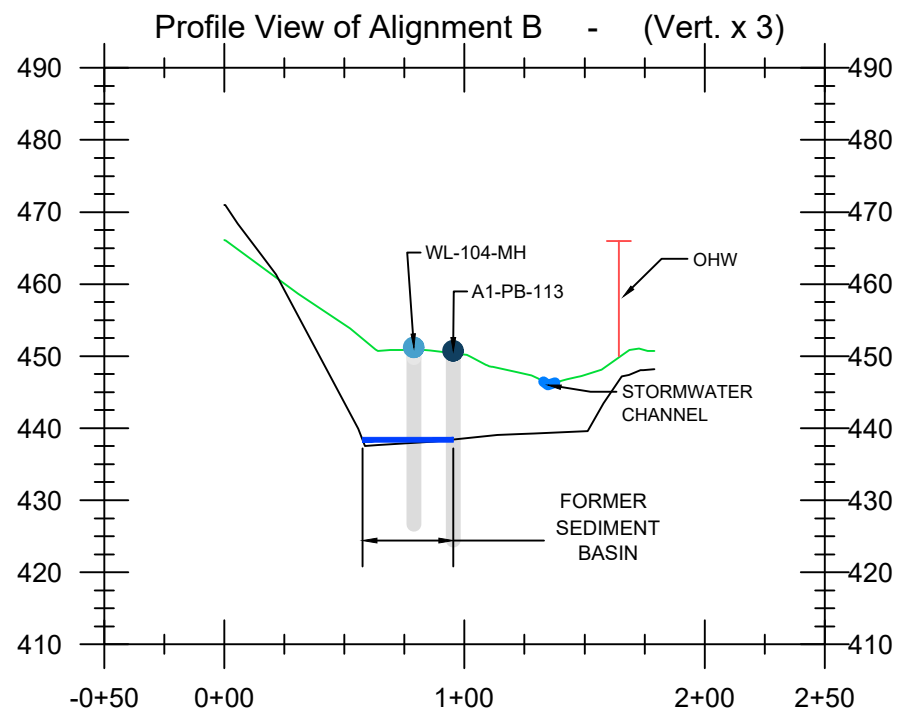
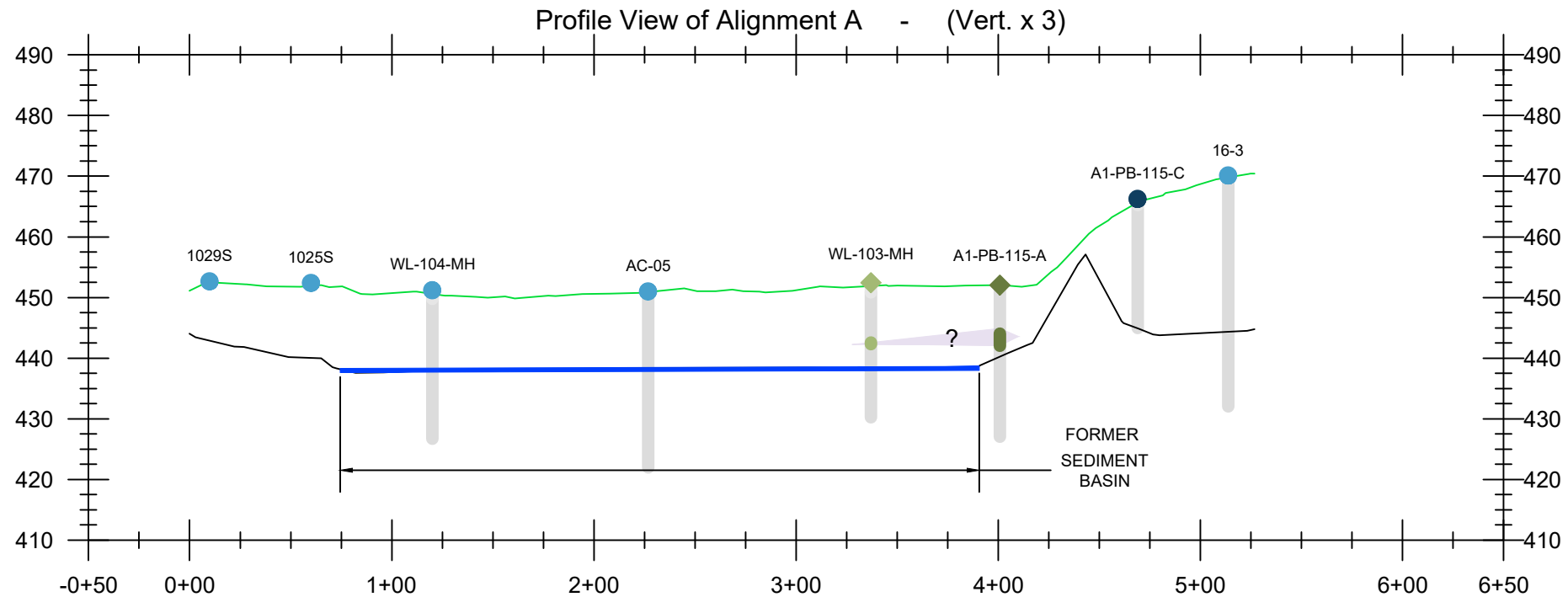
PREPARED FOR  
 THE UNITED STATES ENVIRONMENTAL  
 PROTECTION AGENCY REGION VII  
 ON BEHALF OF  
 WEST LAKE LANDFILL OU-1  
 RESPONDENTS

**FIGURE #**  
**A10-2**

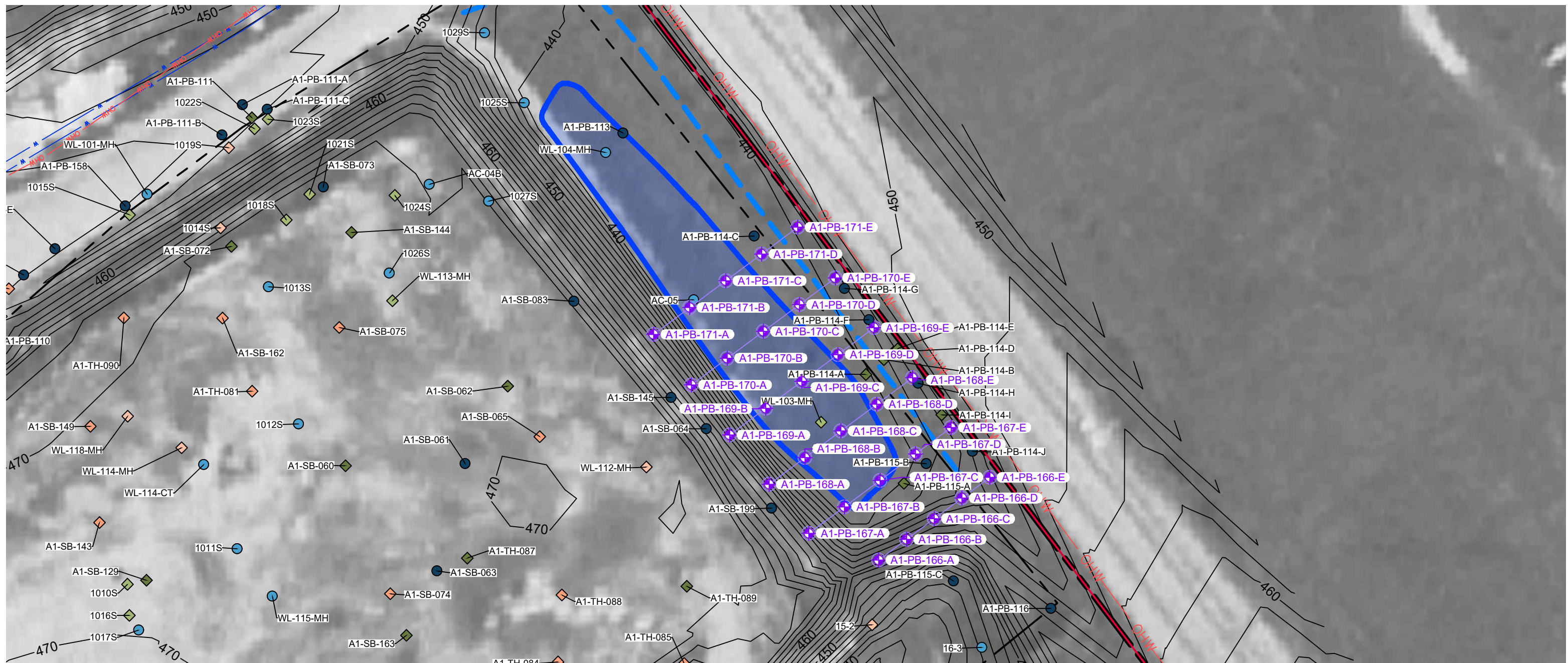
**DRAWN BY:**  
**APPROVED BY:**  
**DATE:**

**FIGURE TITLE**  
**CROSS SECTIONS THROUGH FORMER SEDIMENT BASIN**

SRC: figures\_#20230816PML1030.dwg DATE: 9/14/2023 3:48:22 PM

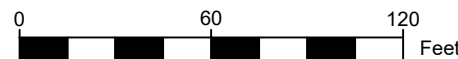
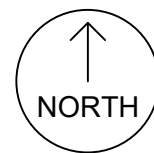






**LEGEND**

- PROPERTY BOUNDARY
- SITE BOUNDARY
- OU-1 AREA 1 BOUNDARY
- 1973-09-19 TOPOGRAPHY
- EXISTING STORMWATER CHANNEL
- EXISTING OVERHEAD POWERLINE
- FORMER SEDIMENT BASIN (APPROX. EL. = 438.5' AMSL)
- PROPOSED DPT LOCATIONS



PRE-D.I. BORING	D.I. BORING	MAXIMUM RESULT X (pCi/g)
		X ≤ 7.9
		X > 7.9 AND X ≤ 52.9
		X > 52.9

NOTES:  
1973-09-19 TOPOGRAPHY AND IMAGERY PROVIDED BY COOPER AERIAL SURVEYS, CO

 301 Plainfield Rd, Ste 350, Syracuse, NY 13212 Ph: 315-451-9560 Missouri State Certificate of Authority #: 2019041541	 Feezor Engineering, Inc. 3377 Hollenberg Dr, Bridgeton, MO 63044 Ph: 217-483-3118 Missouri State Certificate of Authority #: E-200912211	PROJECT WEST LAKE LANDFILL SUPERFUND SITE OU-1 REMEDIAL DESIGN BRIDGETON, ST. LOUIS COUNTY, MO	PREPARED FOR THE UNITED STATES ENVIRONMENTAL PROTECTION AGENCY REGION VII ON BEHALF OF WEST LAKE LANDFILL OU-1 RESPONDENTS		FIGURE # <b>A10-3</b> DRAWN BY: APPROVED BY: DATE:
		FIGURE TITLE <b>PROPOSED BORING LOCATIONS</b>		SRC: figures_#20230816PML1030.dwg DATE: 9/14/2023 3:52:50 PM	