



EVENT FACT SHEET

EPA July Community Meetings and Opportunity for Public Comment

Engineering Evaluation and Cost Analysis Plans to Clean Up Big River and Floodplain Jefferson and St. Francois Counties, Missouri – July 2025

The U.S. Environmental Protection Agency (EPA) Region 7 is inviting public input on two Engineering Evaluation/Cost Analysis (EE/CA) plans to clean up lead and other heavy metal contamination along the Big River and floodplain for both St. Francois and Jefferson counties.

Overview: These counties are part of the Old Lead Belt, where lead was mined and smelted for hundreds of years in southeastern Missouri, and these activities contaminated the Big River and floodplain. To learn more about lead poisoning prevention, EPA's EE/CA plans for the Big River, maps and more, see EPA's July 2025 Fact Sheet online at: www.epa.gov/mo/missouri-cleanups.

Public Comment Period: On **Wednesday, July 16**, both EE/CAs will be available online for public review on each site webpage (links below); see **Site Documents & Data** and **Administrative Record (AR) File**. Public comments will be accepted for 30 days through Aug. 17, 2025. To provide verbal comment, please attend either **community meeting in July** to make a statement or **leave a voicemail** at **816-589-5534**. *Please specify which site/county.*

Comments and Questions: Direct any requests, questions, and/or provide written comments to: EPA Community Involvement Coordinator **Hilary Elizabeth Kramer** via email: kramer.elizabeth@epa.gov; phone: **816-589-5534** or toll-free 1-800-223-0425; or mail: U.S. EPA Region 7, 11201 Renner Blvd., Lenexa, KS 66219.

Events and Verbal Comment Opportunity: EPA will hold **Community Meetings** on **July 22** and **July 23, 2025**. These meetings will be held:

Tuesday, July 22 (6 to 8 p.m.)

**First State Community Center
(Centene Center) Conference Rooms:**

2 Black Knight Drive, Farmington, MO 63640

To review the EE/CA for the **Big River Mine Tailings/St. Joe Minerals Corp. NPL Superfund Site** (in St. Francois County), see

Big River Mine Tailings Removal EECA for OU2 – AR #67971

BRMT OU02 Big River Watershed EE/CA, at:

www.epa.gov/superfund/bigrivermine

<https://semspub.epa.gov/work/07/30831219.pdf>

Wednesday, July 23, (6 to 8 p.m.)

**Little Theater in Arts and Sciences I (ASI 1) Building,
Lecture Hall 3, Jefferson College Hillsboro**

1000 Viking Drive, Hillsboro, MO 63050

To review the EE/CA for the **Southwest Jefferson County Mine Tailings NPL Superfund Site** (in Jefferson County),

see **SWJC Mining EECA Removal for OU4 – AR #67972**

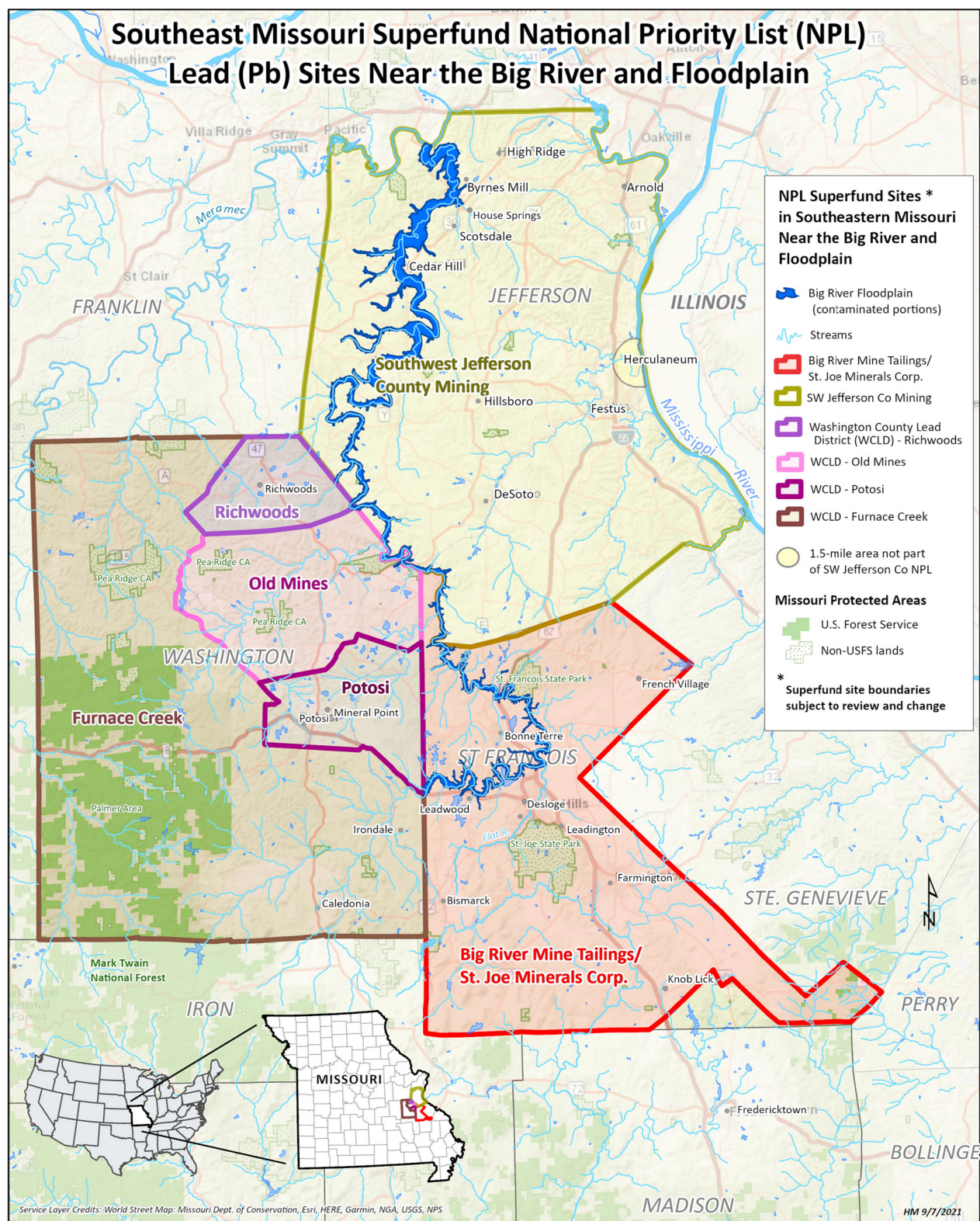
SWJC OU04 Big River Watershed EE/CA, at:

www.epa.gov/superfund/southwestjeffersoncountymining

<https://semspub.epa.gov/work/07/30831220.pdf>

For both events, starting at 6 p.m., EPA will be available to talk with community members in an Open House format. At 6:30 p.m., EPA will deliver a presentation about the EE/CA plans, with options for cleaning up contaminated surface water and sediment, followed by an opportunity for verbal comments.

U.S. Environmental Protection Agency, Region 7 | 11201 Renner Boulevard, Lenexa, KS 66219 | Toll-free: 1-800-223-0425



The Agency is providing this geospatial information as a public service and does not vouch for the accuracy, completeness, or currency of data. Data provided by external parties is not independently verified by EPA. This data is made available to the public strictly for informational purposes. Data does not represent EPA's official position, viewpoint, or opinion, express or implied. This information is not intended for use in establishing liability or calculating Cost Recovery Statutes of Limitations and cannot be relied upon to create any rights, substantive or procedural, enforceable by any party in litigation with the United States or third parties. EPA reserves the right to change these data at any time without public notice.

To review the EE/CA for the Big River Mine Tailings/St. Joe Minerals Corp. NPL Superfund Site (in St. Francois County), see the **Big River Mine Tailings Removal EECA for OU2** at: <https://sempub.epa.gov/work/07/30831219.pdf>. The Administrative Record (AR) files are online at: [BRMT OU02 Big River Watershed EE/CA \(227 documents\)](https://www.epa.gov/superfund/bigrivermine) – located at:

www.epa.gov/superfund/bigrivermine

To review the EE/CA for the Southwest Jefferson County Mine Tailings NPL Superfund Site (in Jefferson County), see **SWJC Mining EECA Removal for OU4**, see: <https://sempub.epa.gov/work/07/30831220.pdf>.

The AR files at: SWJC AR for the EECA: [SWJC OU04 Big River Watershed EE/CA \(243 documents\)](https://www.epa.gov/superfund/southwestjeffersoncountymining) located at:

www.epa.gov/superfund/southwestjeffersoncountymining