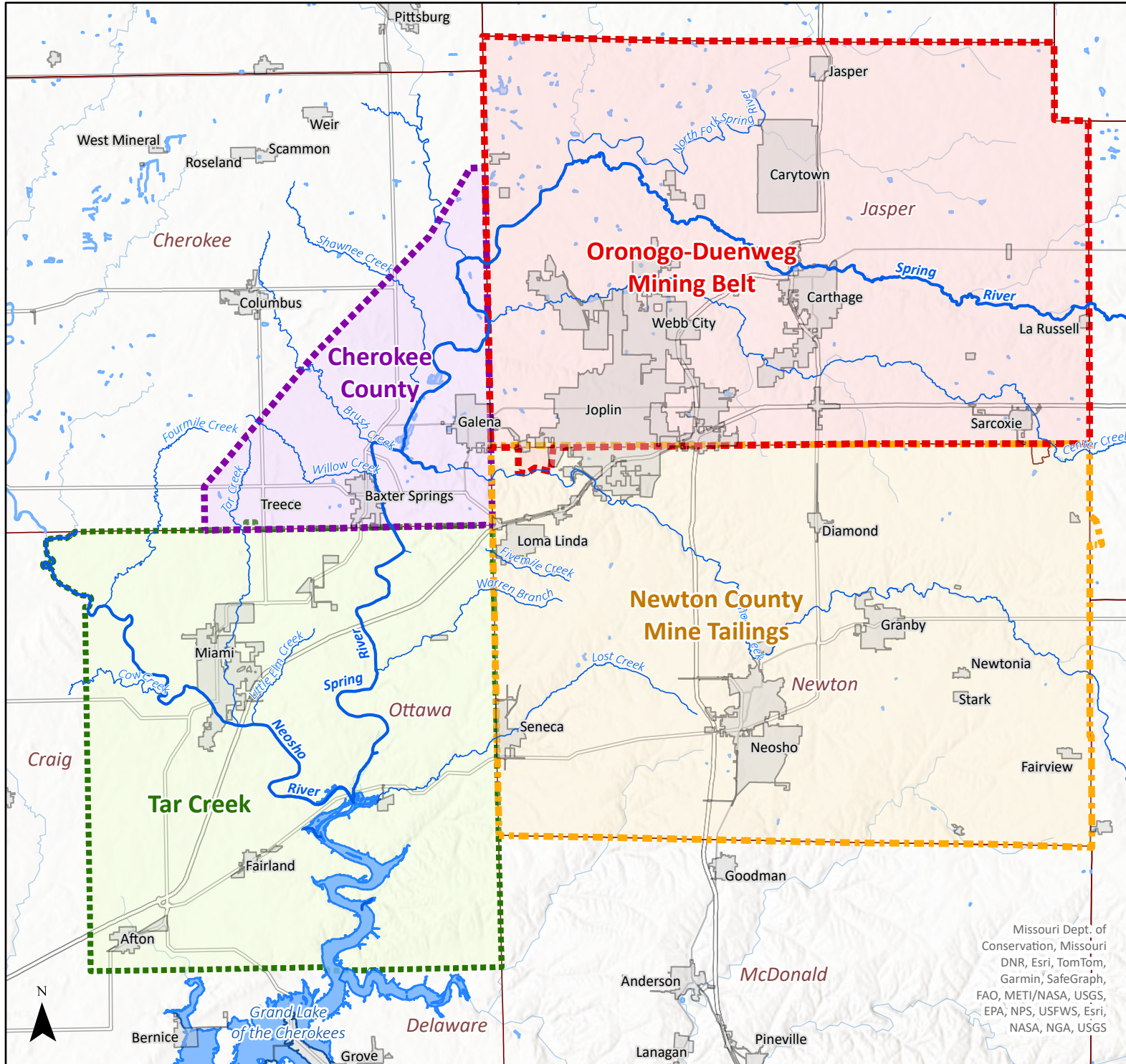


Tri-State Mining District National Priority List (NPL) Superfund Sites

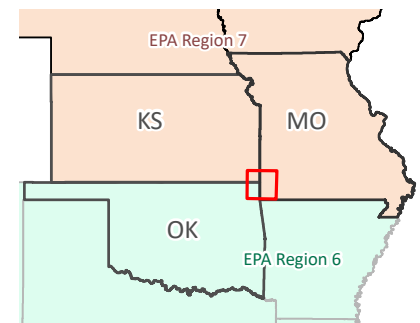


- Small lakes
- Grand Lake of the Cherokees
- Neosho & Spring River tributaries
- Neosho & Spring Rivers
- Cities & towns
- County boundaries

Tri-State NPL Superfund Sites

- Cherokee County
- Newton County Mine Tailings
- Oronogo-Duenweg Mining Belt
- Tar Creek

- EPA Region 7
- EPA Region 6



Missouri Dept. of Conservation, Missouri DNR, Esri, TomTom, Garmin, SafeGraph, FAO, METI/NASA, USGS, EPA, NPS, USFWS, Esri, NASA, NGA, USGS

HM 2/6/2024

The Environmental Protection Agency does not guarantee the accuracy, completeness, or timeliness of the information shown, and shall not be liable for any injury or loss resulting from reliance upon the information shown.

