



WEBINAR

WEST LAKE LANDFILL SUPERFUND SITE BRIDGETON, MO

May 19, 2016



West Lake Landfill Site Update

Mary Peterson, EPA Region 7 Superfund Director

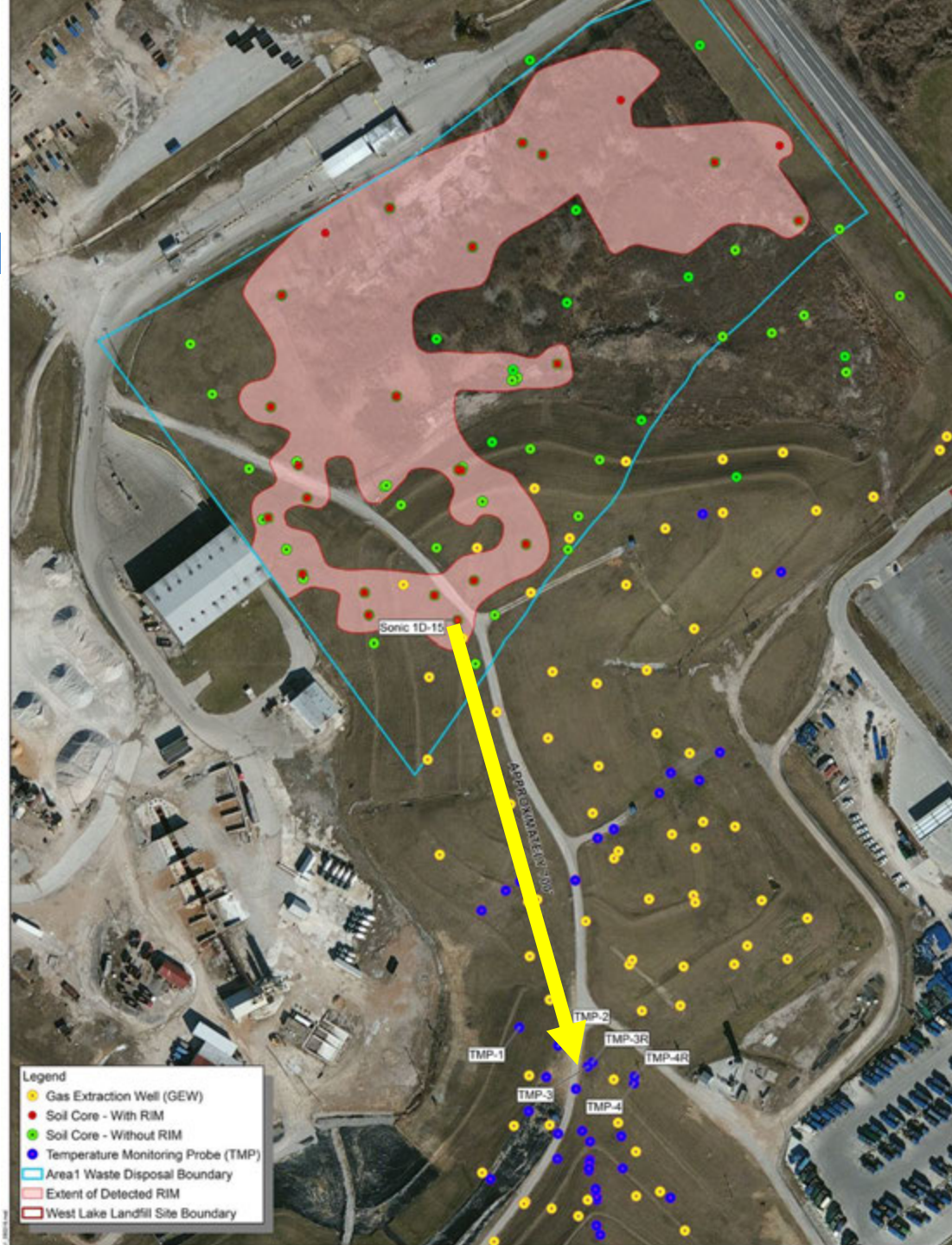
Brad Vann, WLL Remedial Project Manager

Tom Mahler, WLL Nuclear Engineer

OUTLINE

- RIM OU1 Area 1 Map and Subsurface Smoldering Event
- Air Sampling Results
- RIM and Buffer Zone
- Pyrolysis
- Timeline of Actions for 2016
 - Final Proposed Remedy
 - Isolation Barrier System (North Quarry Order)
 - Surface Fire Removal Action

RIM OU1 Area 1



- Legend
- Gas Extraction Well (GEW)
 - Soil Core - With RIM
 - Soil Core - Without RIM
 - Temperature Monitoring Probe (TMP)
 - Area 1 Waste Disposal Boundary
 - Extent of Detected RIM
 - West Lake Landfill Site Boundary



Air Sampling Results

- State of Missouri: “Gamma radiation rates continue to be **indistinguishable from natural background** levels and were below levels of public health concern.”
<http://dnr.mo.gov/.../BridgetonSanitaryLandfill-RCP.htm>
- 2013 and 2014 on-site: Gross alpha and gross beta radiation, and radionuclides thorium-228, thorium-230, and thorium-232 **did not exceed occupational standards**. (ATSDR)
- Off-site air monitoring in Spanish Village and elsewhere 2014 – 2015: Uranium, thorium, radium, alpha and beta radioactivity sampling results were **100 times LOWER than the regulatory values of the USNRC**. (ATSDR)

<https://archive.epa.gov/.../pdf/west-lake-hc-eval-ou1.pdf>



RIM and Buffer Zone/AAA Property

- RIM at AAA Trailer and Buffer Zone.
- PRPs will install a rock cover and extend fencing to include it in property boundary. (Updated boundary survey showed material is inside landfill property)
- EPA included remediation of the Buffer Zone/Crossroads Property in the 2008 Record of Decision.
- Data collected to date at the site does not indicate an increased risk of adverse health effects for on-site workers nor the general public.



Pyrolysis Test

- Evaluating what happens to radon when radiological material is heated (lab experiment for a SSE touching RIM)
- Samples collected from WLL and analyzed by certified laboratory
- Final report should be ready in 2-4 weeks
- Data being evaluated to see if modifying existing radon flux modeling is required. This model is used to conservatively estimate how much radon can be expected to be released from RIM at the surface during an SSE, and associated risk if exposed

WEST LAKE LANDFILL SUPERFUND SITE 2016 ACTION TIMELINE

This timeline depicts projected target dates for completion of major milestone events associated with the OU-I Final Remedy, the Isolation Barrier System, and the Surface Fire Removal Action.

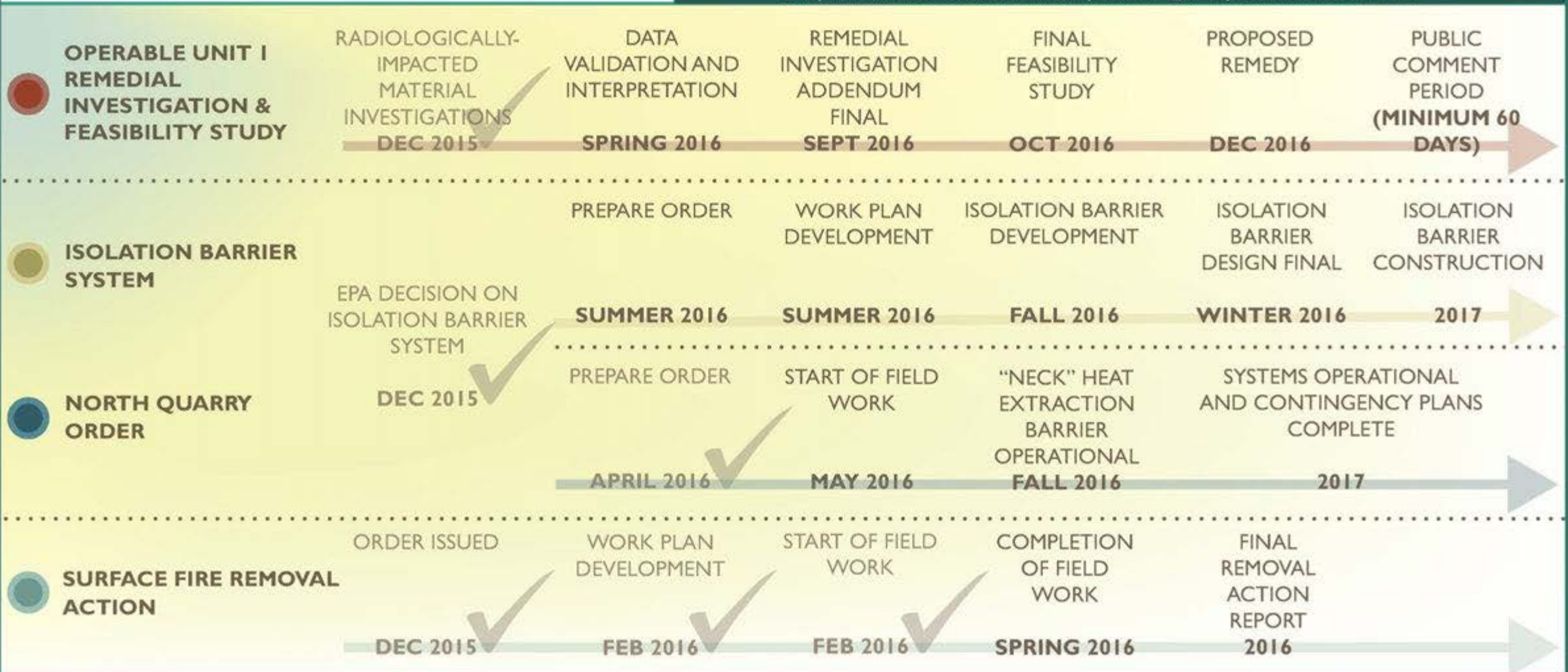
TIMELINE 2016 - FUTURE Bridgeton, Missouri



MORE INFORMATION

Visit: www3.epa.gov/region07/cleanup/west_lake_landfill
 Contact: Ben Washburn, Community Involvement Coordinator
washburn.ben@epa.gov | (913) 551-7364 | Toll-free: (800) 223-0425

<https://www.facebook.com/WestLakeLandfillSuperfundSite> <https://twitter.com/WestLakeSite>





Questions and Discussion