



# EPA Region 6 Begins Remedial Investigation/Feasibility Study

Lea and West Second Street Superfund Site  
Roswell, New Mexico

May 2017

## This fact sheet will tell you about:

- The Remedial Investigation/Feasibility Study (RI/FS) Process and Ongoing Activities
- Site Description
- Community Involvement
- Technical Assistance Grant (TAG)
- Contact Information
- Information Repository

## RI/FS Process and Ongoing Activities

The first step of the RI/FS process is to have a work plan in place that describes the work to be done. The Remedial Investigation is designed to determine the nature and extent of contamination, and the Feasibility Study evaluates various ways to deal with the contamination at the site. The RI/FS Work Plan and support plans describe sampling activities, the number and type of samples collected, sampling procedures, health and safety precautions, community outreach activities and quality assurance procedures. The RI/FS Work plan was finalized on June 17, 2016. EPA intends to hold availability sessions, community meetings and community interviews throughout the RI/FS process.

Later approved support plans include the Sampling and Analysis Plan, Health and Safety Plan and a Site Management Plan

The RI/FS process normally ends with the release of the RI/FS documents and development of the Proposed Plan for remedial action in cleaning up the site. The Proposed Plan also serves as an effective communication device to present a preferred remedy and rationale to the community. After the submission of the document, EPA will hold a public meeting to discuss the Proposed Plan, followed by a comment period for community members to submit written comments.

A phased remedial investigation is currently underway. During this investigation EPA will perform a passive soil gas survey and a vapor intrusion investigation. Passive soil gas is used as a screening tool to determine if cleaning solvents used during historical industrial operations have migrated to the surface from the soil or ground water. Vapor intrusion may occur in buildings where volatile organic compounds exist in the subsurface environment. To check for vapors beneath the building and indoors, air testing is performed in addition to conducting sub-slab soil gas or crawl space testing.

EPA will inform the public regarding site activities, and provide additional fact sheets on these topics throughout the investigation.

## Site Description

The Lea and West Second Street Superfund Site is located in the City of Roswell, Chavez

County, New Mexico (Figure 2 below). The site consists of four separate locations (sites) near West Second Street and East Second Street in areas of active commercial and residential use near the center of downtown Roswell (Figure 3 below). The locations are:

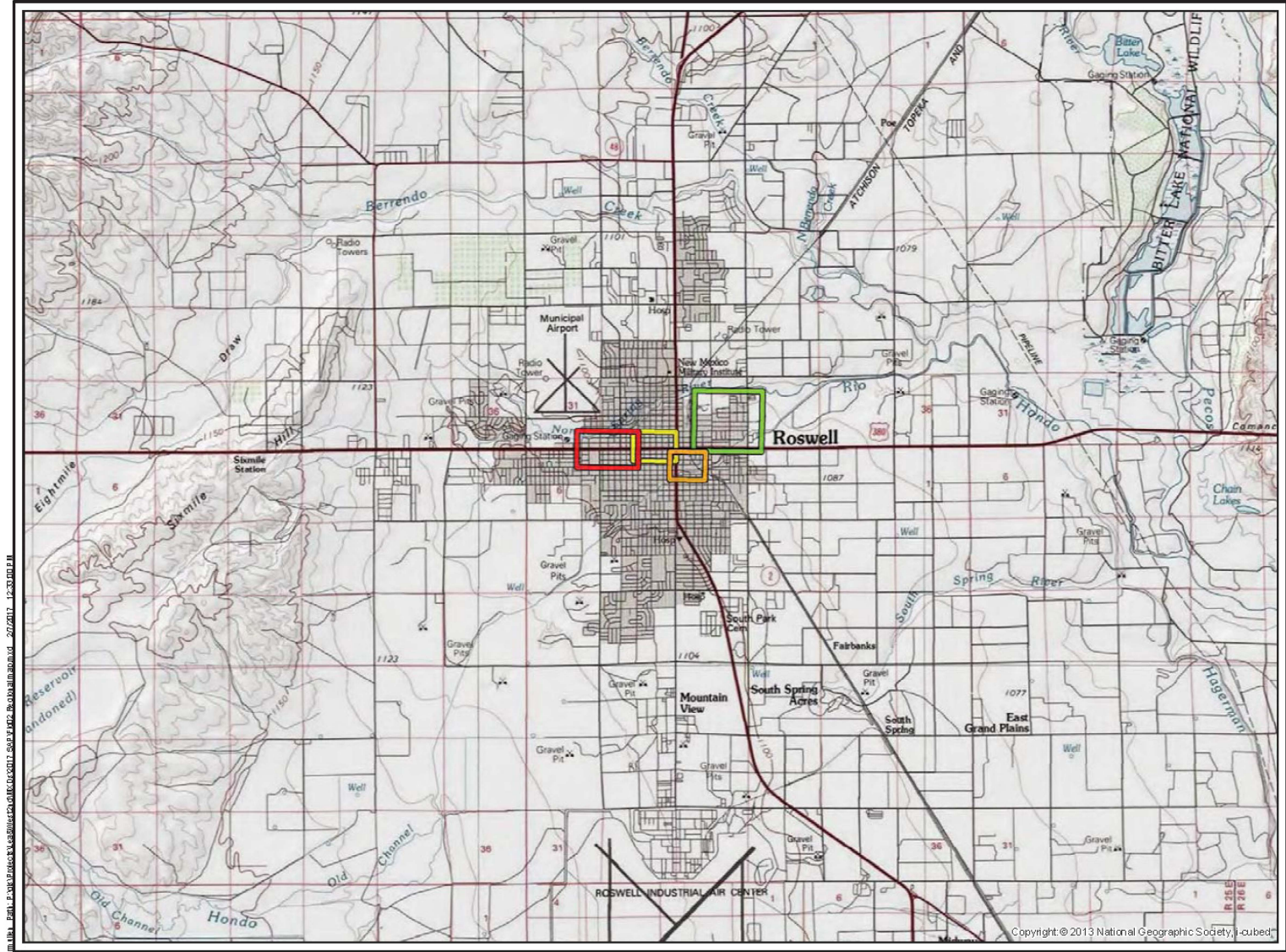
- Site 1 – 510 and 514 West Second Street
- Site 2 – 507 East Second Street
- Site 3 – Intersection of West Second and Montana
- Site 4 - commonly referred to as Parks LUST Site

At each of these four sites, historical industrial operations are documented and past investigations confirmed tetrachloroethylene (PCE – a dry cleaning solvent) was released. As a result, groundwater is impacted, resulting in a PCE groundwater plume. Trichloroethylene (TCE) contamination and additional degradation products of PCE are also present in groundwater.

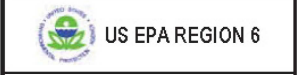
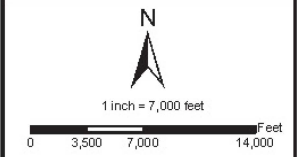
The City of Roswell supplies potable water to the residents in the surrounding neighborhoods, and the drinking water supply is not impacted from groundwater contamination.

## Community Involvement

EPA is committed to engaging dialogue and collaboration with community members. Our goal for Superfund community involvement



- Legend**
- Site 1
  - Site 2
  - Site 3
  - Site 4



**FIGURE 2**  
**SITE LOCATION**  
 LEA AND WEST SECOND STREET SUPERFUND SITE  
 ROSWELL, CHAVES COUNTY,  
 NEW MEXICO

U:\Data\2013\20130501\20130501\_000012\_Superfund\_Site\_Location.mxd 2/27/17 1:53:52 PM

Copyright © 2013 National Geographic Society, -cubed

is to advocate and strengthen early and meaningful community participation during Superfund cleanup. EPA is committed to:

- Encouraging and enabling community member involvement.
- Listening and responding to community concern.
- Changing planned actions where community comments or concerns have merit.
- Keeping the community well informed of ongoing and planned activities.
- Explaining EPA activities to the community.

**Community Participation** - EPA welcomes the opportunity to improve our communication effort by obtaining feedback and suggestions from the public. EPA is open to public suggestions that improve the exchange of information, or ideas that enhance the implementation of the remediation efforts.

**Community Involvement Plan (CIP)** - A CIP will be developed to identify the concerns, needs and issues of the community. This document informs the site team about the community and preferred ways to involve them in site activities. To develop this document, EPA plans to conduct community interviews and outreach with other stakeholders to analyze community needs for communication and involvement with the site. This process takes several months to complete.

**Technical Assistance Grant**  
An understanding of the technical issues concerning a hazardous

waste site helps citizens provide thoughtful, informed comments to EPA decision-makers considering proposed Superfund actions. Recognizing the importance of community involvement and the need for citizens living near these sites to be well informed, Congress included provisions in the Superfund amendments to establish a Technical Assistance Grant (TAG) program.

The TAG program provides up to \$50,000 per site to a community group affected by the site for the purpose of hiring technical advisors. The group must provide at least 20 percent of the total costs of their project and must budget the expenditure of grant funds to cover the life of the Superfund process at the site(s). For more information on the TAG program, go to [www.epa.gov/superfund/technical-assistance-grant-tag-program](http://www.epa.gov/superfund/technical-assistance-grant-tag-program).

**For more information, please contact:**

If you have any questions or would like to obtain more information about the Lea and West 2<sup>nd</sup> Street Superfund Site, please contact:

**Janet Brooks, Remedial Project Manager**  
U.S. EPA (6SF-RL)  
(214) 665-7598 or toll free 1-800-533-3508  
[Brooks.janet@epa.gov](mailto:Brooks.janet@epa.gov)

**Ursula Lennox, Remedial Project Manager**  
U.S. EPA (6SF-RL)  
(214) 665-6743 or toll free 1-800-533-3508  
[Lennox.ursula@epa.gov](mailto:Lennox.ursula@epa.gov)

**Edward Mekeel, Community Involvement Coordinator**  
U.S. EPA (6SF-VO)

(214) 665-2252 or toll free 1-800-533-3508  
[Mekeel.edward@epa.gov](mailto:Mekeel.edward@epa.gov)

**Janetta Coats, Technical Assistance Grant (TAG) Coordinator**  
U.S. EPA (6SF-VO)  
(214) 665-7308 or toll free 1-800-533-3508  
[Coats.janetta@epa.gov](mailto:Coats.janetta@epa.gov)

**Angelo Ortelli, Remedial Project Manager**  
New Mexico Department of Environmental Department (NMED)  
(505) 827-2866  
[Angelo.Ortelli@state.nm.us](mailto:Angelo.Ortelli@state.nm.us)

**All news media inquiries should be directed to EPA Region 6 Press Office, at (214) 665-2200 or (214) 665-2261**

**Information Repository**  
Roswell Public Library  
301 North Pennsylvania Avenue  
Roswell, New Mexico 88201

U.S. Environmental Protection Agency Region 6  
1445 Ross Avenue  
Dallas, Texas 75202  
(214) 665-6427 (Please call for an appointment if you desire to review the file.)

**US EPA on the internet:**  
[www.epa.gov/superfund/lea-west-2nd-street](http://www.epa.gov/superfund/lea-west-2nd-street)

See inside for information about EPA's upcoming investigation at the  
 Lea and West Second Street Superfund Site

