

COMMUNITY INVOLVEMENT PLAN

NORTH LITTLE ROCK AUTO SALVAGE
NORTH LITTLE ROCK, ARKANSAS

APRIL, 2016



U. S. ENVIRONMENTAL PROTECTION AGENCY
REGION 6



THE U. S. ENVIRONMENTAL PROTECTION AGENCY'S (EPA)
SUPERFUND COMMUNITY INVOLVEMENT PROGRAM IS COMMITTED
TO PROMOTING COMMUNICATION BETWEEN CITIZENS AND THE AGENCY.

ACTIVE PUBLIC INVOLVEMENT IS CRUCIAL TO THE SUCCESS OF ANY PUBLIC PROJECT.

EPA'S COMMUNITY INVOLVEMENT ACTIVITIES AT THE
NORTH LITTLE ROCK AUTO SALVAGE
ARE DESIGNED TO

INFORM THE PUBLIC OF THE NATURE OF THE ENVIRONMENTAL ISSUES ASSOCIATED WITH THE SITE,

INVOLVE THE PUBLIC IN THE DECISION-MAKING PROCESS THAT WILL AFFECT THEM,

INVOLVE THE PUBLIC IN THE RESPONSES UNDER CONSIDERATION TO REMEDY THESE ISSUES, AND

INFORM THE PUBLIC OF THE PROGRESS BEING MADE TO IMPLEMENT THE REMEDY.

Table of Contents

Section		Page
1.0	Overview of the Community Involvement Plan	1
2.0	Capsule Site Description	1-3
2.1	Site History	1
2.2	Site Description/Location	1-2
2.3	Site Inspections and Cleanup Activities	2-3
3.0	Community Background	4-7
3.1	Community Profile.....	4
3.2	History of Community Involvement.....	5
3.3	Key Community Concerns.....	5
3.4	Response to Community Concerns.....	5-7
3.5	Summary of Communication Needs.....	8
4.0	EPA's Community Involvement Program	9-16
4.1	The Plan	7-14
4.2	Time Frame Summary for Community Involvement Activities.....	116
Appendices:		
A	EPA Regional Contacts.....	17
B	Local Officials	18
C	State Officials.....	19
D	Federal Elected Officials.....	20
E	Environmental and Active Citizens Groups	21
F	Potentially Responsible Parties.....	22
G	Media Contacts	23
H	Meeting Locations	24
I	Repository Locations	25
J	Other Local Resources.....	26

Section 1.0 Overview of the Community Involvement Plan

EPA developed this Community Involvement Plan to facilitate two-way communication between the community surrounding the North Railroad Avenue Plume Superfund Site and EPA and to encourage community involvement in site activities. EPA will utilize the community involvement activities outlined in this plan to ensure that residents are continuously informed and provided opportunities to be involved.

This Community Involvement Plan addresses The North Little Rock Auto Salvage (NLRAS) Site's relationship to the community and EPA, provides a background of the community, presents EPA's community involvement program, and provides a listing of resources available. EPA drew upon several information sources to develop this plan, including community interviews and site files. EPA's Regional Office will oversee the implementation of the community involvement activities outlined in this Plan.

Section 2.0 Capsule Site Description

2.1 North Little Rock History

North Little Rock has a long history, dating back to the Burial Mound People. It was once known as Argenta, a name currently applied specifically to downtown North Little Rock. In 1890, Little Rock annexed the unincorporated Argenta community as its Eighth Ward, preempting a competing petition to incorporate Argenta. A neighboring area was incorporated as the Town of North Little Rock in 1901 as part of a plan to reclaim the Eighth Ward from Little Rock. By 1904, the Arkansas Supreme Court allowed the town to annex the Eighth Ward; the modern City of North Little Rock considers this its founding date. The combined city adopted the Argenta name by 1906, but reverted to North Little Rock in October 1917. A remnant of the city's earliest years can be found in North Little Rock City Hall (constructed in 1914), which still contains plaques referring to "Argenta", and contains "C of A" (City of Argenta) ornamental designs.

2.2 Site Description and Location

The North Little Rock Auto Salvage Site is located at 600 North Dixie Lane in North Little Rock, Pulaski County, Arkansas. The Site was formerly the W. R. Grace Zonolite vermiculite expansion facility.

Records indicate that the facility accepted approximately 85,050 tons of raw vermiculite between 1953 and 1989, from the W.R. Grace mine located in Libby, Montana. There was also a deposit of amphibole asbestos at that mine, so the vermiculite from Libby was contaminated with asbestos. Vermiculite from Libby was distributed for processing to a number of facilities across the country.

The North Little Rock facility sits on approximately 2.4 acres of land, although vermiculite has been identified beyond the facility boundaries.

2.3 Site Inspections and Cleanup Activities

June 2011: EPA conducted an emergency response as a result of a fire that broke out at the facility. EPA collected air and soil samples as part of that emergency response. The air samples did not detect the presence of asbestos in the air, however the soil sample detected the presence of LA asbestos in the onsite soils.

July 2011: EPA met with the North Little Rock Mayor, City Engineer, and City Fire Chief to discuss past and future action at the site.

July/August 2011: EPA conducted assessment activities at the site and surrounding properties. Asbestos-contaminated soils were identified both onsite and surrounding properties. Surface soil contamination was documented on and around the former exfoliation facility. The offsite contamination included one grid (approximately 50' x 50' in size) in Conley Park and two residential and commercial properties located south of the site.

November 2011: Minor containment (installation of a fence) was put in place around the grid in Conley Park, to reduce the potential for the exposure to local residents. Additional surface soil sampling was performed in Conley Park to determine the extent of the contamination. Analytical results did not indicate the presence of LA asbestos in concentrations requiring soil excavation.

December 2011: EPA held a Community Meeting in the Dixie Neighborhood, (North of the site), to inform the citizens of the asbestos contaminated soils in Conley Park and outlined future EPA activities associated with the site and surrounding properties.

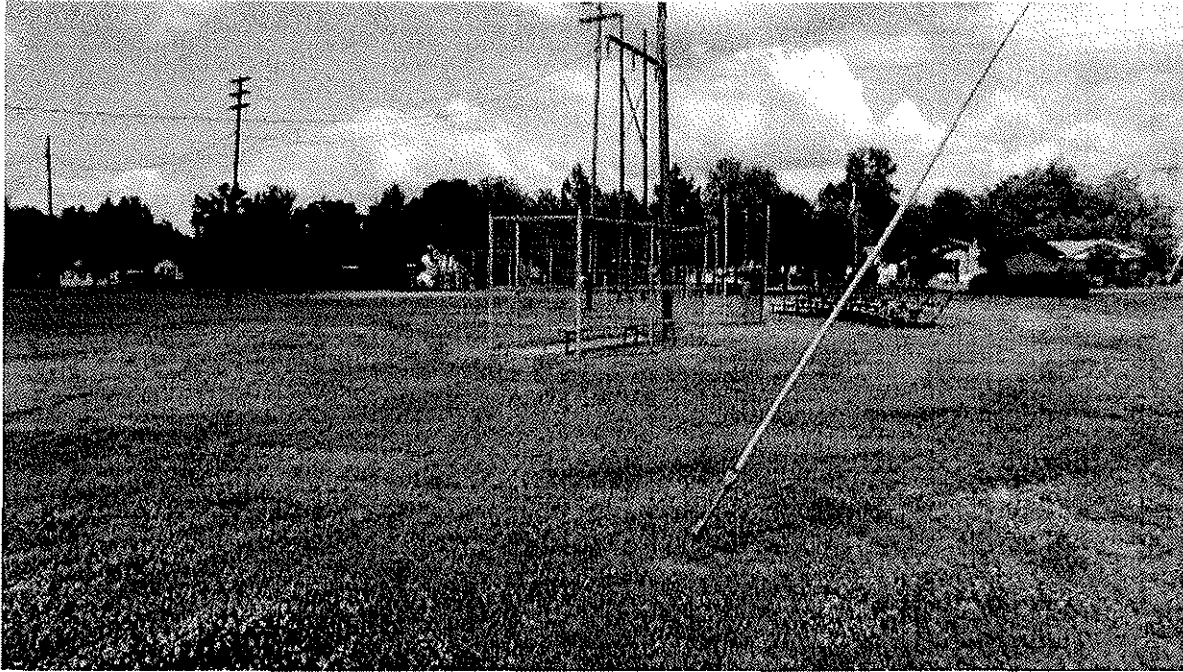
December 2011: EPA conducted additional surface soil sampling activities at the nearby Redwood Childhood Center (now closed) to determine if LA asbestos had migrated to the school property. Analytical results **did not** detect the presence of LA asbestos however, elevated levels of chrysotile asbestos (not related to the former vermiculite exfoliation facility) were detected in some locations on the school property.

January 2012: EPA conducted surface and subsurface soil sampling from residential properties in the Dixie Community. In addition subsurface sample were collected from Conley Park. Analytical results **did not** detect the presence of LA asbestos in the surface/subsurface soils on residential properties nor the subsurface soils in Conley Park.

January 2012: EPA conducted Activity Based Sampling (ABS) at Conley Park, the Redwood Early Childhood Center, two residential lots located south of the site, and two residential lots located in the Dixie Community. Analytical results of ABS sampling **did detect** low levels of LA asbestos fibers on four residential lots south of the site. LA fibers **were not** detected at the other ABS locations.

February 2012: EPA conducted an emergency removal action at Conley Park to excavate and dispose of the soil in the one asbestos contaminated grid. The park was then cleared by EPA for reuse by the public. EPA also conducted an emergency removal at the Redwood School property to remove the Chrysotile asbestos contaminated soil.





February 2013: EPA conducted a second Community Meeting at the Redwood School to update the residents on the assessment and removal activities to date.

EPA is currently in negotiations with the W.R. Grace Corporation (responsible party) to conduct three phases of removal activities at the former exfoliation site:

Phase 1: Conduct a soil cleanup on the four residential properties located south of the site.

Phase 2: Conduct additional soil and air sampling on and immediately surrounding the former exfoliation site.

Phase 3: Conduct a soil cleanup of all areas of contamination on site.

The three phases of work are currently planned for the latter half of 2015 and into 2016.

September 2015: EPA met with the North Little Rock Mayor to appraise him of the agreement reached with W. R. Grace, on the cleanup of the site in the 3 phases listed above. EPA conducted a third Community Meeting to inform the resident of the actions that are now beginning at the site and what to expect in the near future.

Section 3.0

Community Background

3.1 Community Profile

As of the census of 2010, there were 62,304 people, 25,542 households, and 16,117 families residing in the city. The population density was 1,348.6 people per square mile (520.7/km²). There were 27,567 housing units at an average density of 615.2 per square mile (237.5/km²). The city was 54.0% White, 39.7% Black or African American, 0.41% Native American, 0.59% Asian, 0.03% Pacific Islander, 1.18% from other races, and 1.26% from two or more races. 5.7% of the population were Hispanic or Latino of any race.

There were 25,542 households out of which 28.9% had children under the age of 18 living with them, 41.9% were married couples living together, 17.6% had a female householder with no husband present, and 36.9% were non-families. 32.0% of all households were made up of individuals and 12.2% had someone living alone who was 65 years of age or older. The average household size was 2.35 and the average family size was 2.97.

In the city the population was spread out with 25.5% under the age of 18, 9.0% from 18 to 24, 28.4% from 25 to 44, 22.5% from 45 to 64, and 14.6% who were 65 years of age or older. The median age was 36 years. For every 100 females there were 87.7 males. For every 100 females age 18 and over, there were 82.9 males.

The median income for a household in the city was \$35,578, and the median income for a family was \$43,595. Males had a median income of \$31,420 versus \$24,987 for females. The per capita income for the city was \$19,662. About 12.4% of families and 16.1% of the population were below the poverty line, including 26.5% of those under age 18 and 11.7% of those age 65 or over.

3.2 History of Community Involvement

Fact Sheets:	Meetings:	Public Notice:
Nov. 2011	Dec. 2011	Feb: 2011
Dec. 2011	Feb. 2013	
Jun. 2012	Sept.2015	
Oct. 2012		
Jan. 2013		
Sep. 2015		

3.3 Key Community Concerns:

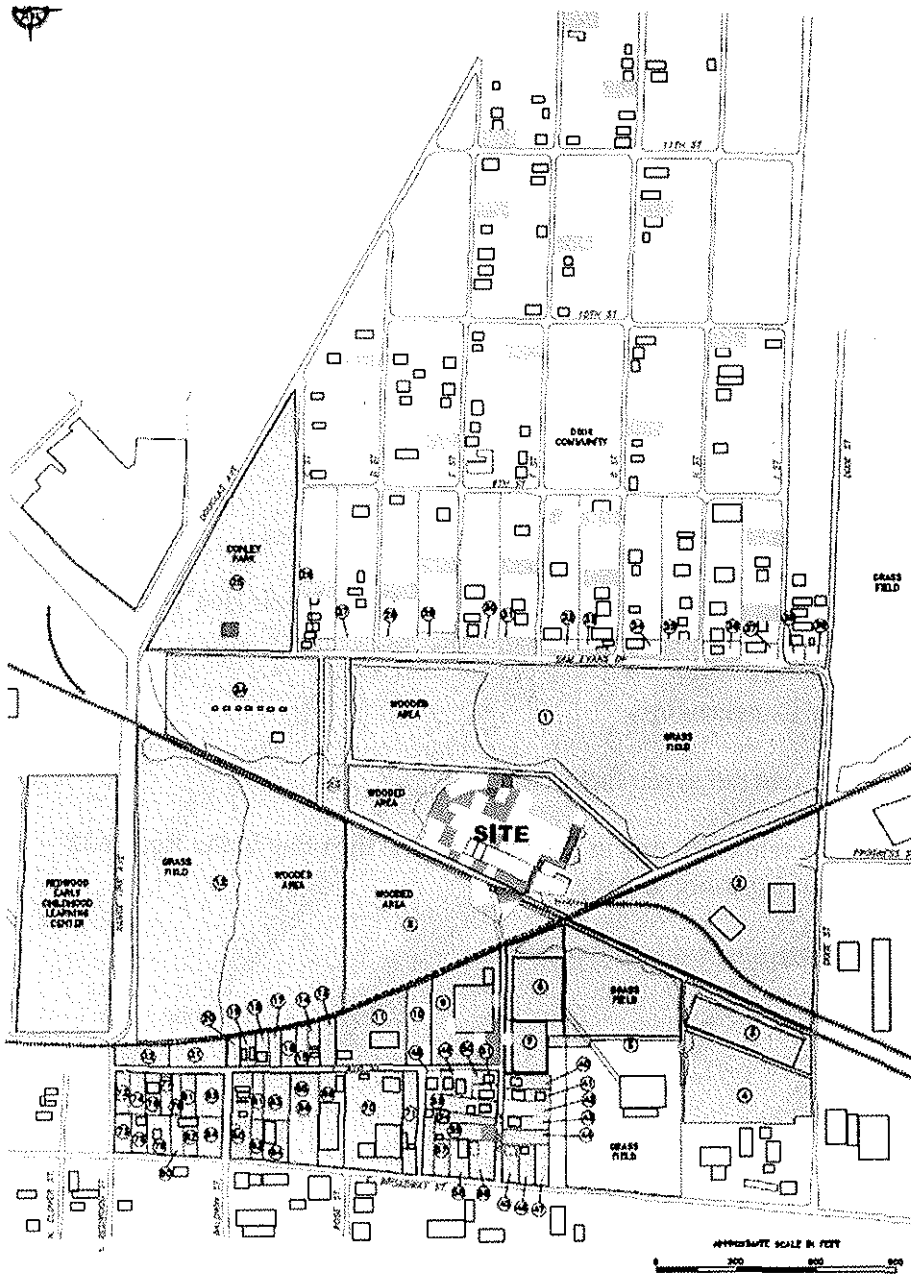
Past exposure and current exposure to Asbestos, and how this has affected their Health.

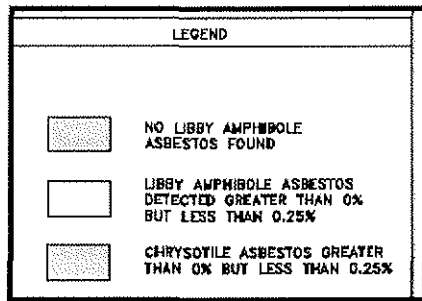
3.4 Response to Community Concerns

We have held three meetings and sent out seven fact sheets.

We have executed two emergency removals, one in Conley Park and the other at the Redwood School, to removal the potential of exposure to Asbestos.

We have sampled the site and numerous residential properties.





There have been no additional areas in the Dixie Neighborhood that we have found LA Asbestos.

The four properties south of the site and the site itself is undergoing remediation at this time (2016), by the PRP.

The Arkansas Department of Health prepared a Health Consultation that was published in January 2014. The community surrounding the Former W. R. Grace site has taken an active role in allowing the EPA access to residential yards for asbestos testing. Several public meetings have been held by EPA or the community, and ADH/ATSDR has actively participated in these meetings. Dates of meetings held within the community include December 8, 2011, June 19, 2012, October 23, 2012, and February 5, 2013. ADH personnel have attended all meetings held to date, along with personnel from the Arkansas Department of Environmental Quality (ADEQ) and the North Little Rock Mayor's Office. ADH/ATSDR personnel have spoken to the community collectively, as well as on an individual basis, concerning the potential health effects from asbestos exposure. Since initial environmental testing by the EPA, the community has been made aware of the potential hazards of airborne asbestos through health education and public meeting forums with federal and state agencies involved in this investigation.

The conclusions of the study follow:

Every time vermiculite or waste rock is stirred up, asbestos fibers may be released into the air. However, being exposed to asbestos does not necessarily mean that a person will develop health problems. Exposure to asbestos, depending on the duration (*i.e.*, how long), intensity or concentration (*i.e.*, how much), and frequency (*i.e.*, how often), may increase these residents' risk of asbestos related diseases. There are other factors as well, including size and type

(mineralogy) of fibers to which a person is exposed, and personal risk factors such as smoking history, history of lung disease, and genetic susceptibility.

In view of these factors, ADH/ATSDR calculated a LCR value for a combined adult and child exposure under a “worst case” scenario using the ABS results from the EPA. At this site, the “worst-case” scenario was calculated for a person who was raised in this community as a child and has lived in the same location for over 40 consecutive years. The total excess LCR (1.5×10^{-5}) fell within EPA’s target risk value and indicates that airborne asbestos exposures within the community are below levels of health concern. Based on the calculated values and the remedial work already completed, no special precautions are currently needed during any residential or recreational activities near this site.

ADH/ATSDR recommends the following for the Former W.R. Grace Facility in North Little Rock, AR:

- Any future construction or re-development plans in the community should recognize the potential of past asbestos soil contamination from waste rock and/or fill material and plan accordingly.
- Continue to provide public information to educate and increase community awareness about potential residual asbestos remaining near or at the site.

3.5 Summary of Communication Needs

Section 4.0 EPA’s Community Involvement Program

The overall goal of EPA’s community involvement program is to promote two-way communication between citizens and the EPA and to provide opportunities for meaningful and active involvement by the community in the cleanup process. EPA will implement the community involvement activities described below. The following plan

is based on the results of the community interviews described earlier; it addresses each issue that was identified as being important to the community.

4.1 The Plan

Issue 1: Community exposure Concerns

Activity 1A: Community Interviews

- Objective: Location of hot spots
- Method: Health Consult and Meetings
- Timing:

Activity 1B: Fencing

- Objective: Eliminate Dermal exposure
- Method:
- Timing:

Issue 2: Finding a Responsible Party

Activity 2A: Enforcement

Issue X: Keeping the public informed and up to date.

Activity XA: Designate an EPA Community Involvement Coordinator (CIC).

- Objective: To provide a primary liaison between the community and the EPA, and to ensure prompt, accurate, and consistent responses and information dissemination about the site. In those instances where EPA's CIC may be unable to provide adequate information (such as on technical issues), inquiries will be directed to the appropriate EPA contact.
- Method: EPA will designate an EPA CIC to handle site inquiries and serve as a point of contact for community members. The CIC is appointed by the Region 6

headquarters. Bill Little is the EPA CIC assigned to the site. He will work closely with Mike McAteer, On Scene Coordinator for the site.

Timing: The CIC was designated on June, 2012

Activity XB: Prepare and distribute site fact sheets and technical summaries.

Objective: To provide citizens with current, accurate, easy-to-read, easy-to-understand information about North Little Rock site.

Method: Fact sheets will be mailed to all parties on the site mailing list. In addition, copies will be available at the information repository and in various cooperating business locations in the community.

Timing: EPA will prepare and distribute fact sheets (as needed, or other frequency)

Activity XD: Provide a toll-free “800 number” for the community to contact EPA.

Objective: To enable citizens to get the latest information available when they want it, rather than having to wait for a meeting or a fact sheet, and without incurring any cost.

Method: EPA will activate the 800 number and publish it periodically in the local papers and in all fact sheets.

Timing: The line is currently operational (1-800-533-3508).

Activity XE: Maintain a mailing list for the Site.

Objective: To facilitate the distribution of site-specific information to everyone who needs or wants to be kept informed about the site.

Method: EPA will create a mailing list that includes all residences adjacent to the site, in known or suspected paths of migration, or those otherwise affected by the site. EPA will also solicit interested parties via fact sheets, newspaper articles, public meetings, public availabilities, etc.

Timing: EPA will begin working on this mailing list immediately and will review/revise it periodically to keep it current.

Activity XF: Establish and maintain Information Repositories.

Objective: To provide a convenient location where residents can go to read and copy official documents and other pertinent information about the site and EPA activities.

Method: The repository is a reference collection of site information containing the Administrative Record file, other site-specific information, the Community Involvement Plan, information about the Technical Assistance Grant program, and the general Superfund process. The Community Involvement Coordinator will work with a local contact to establish the local repository. This repository will be accessible to the physically challenged, will have copier facilities, and will be available to residents during normal business hours and at least some evening and/or weekend hours. Additional repositories may also be established.

William F. Laman
Public Library
2801 Orange Street
North Little Rock, Arkansas 72114

EPA adds new documents as they become available.

Activity XG: Provide Site and Superfund information on the Internet.

Objective: To provide key resources for searching and listing both general and specific information about Superfund and hazardous waste issues.

Method:

- EPA Headquarters: <http://www.epa.gov>
- EPA Region 6: <http://www.epa.gov/earth1r6>

The Proposed Plan and the Record of Decision (ROD) for the site will be placed on the internet as they are completed.

Activity XI: Establish and maintain the Administrative Record.

- Objective: To provide residents with a paper trail of all documents, resources, etc. used by the Regional Project Manager and Site Team in reaching all decisions about the site and its cleanup.
- Method: EPA will provide at least two sets of the Administrative Record for the site, one in the EPA Region 6 offices located at 1445 Ross Avenue, Dallas, Texas and one located in the local Information Repository near the site.
- Timing: The Administrative Record is opened as soon as site investigation begins and remains open until the last ROD is signed.

Activity XJ: Conduct special events.

- Objective: To educate citizens, add a sense of closure, highlight a major event or milestone, recognize significant citizen or PRP activity, etc.
- Method: Examples include: A special topic educational campaign, construction completion party, on-site demolitions, transitions to the next phase, etc.

Issue Y: Provide adequate and meaningful opportunities for community involvement.

Activity YA: Hold public meetings.

- Objective: To update the community on site developments and address community questions, concerns, ideas and comments.
- Method: Refer to Appendix XX for suggested meeting locations. EPA will schedule, prepare for, and attend all announced meetings. EPA will provide at least two weeks' notice of the scheduled meeting. The Regional Project Manager, Community Involvement Coordinator, and other appropriate EPA staff will attend.
- Timing: A public meeting is required during the Proposed Plan comment period (see below). EPA will hold other public meetings as appropriate.

Activity YC: Make informal visits to community.

- Objective: To help keep community members informed about the site, while providing EPA with feedback about site activities and the community's opinions.
- Method: EPA will establish a presence in the community through informal, often unscheduled visits to talk spontaneously with local residents.
- Timing: Throughout the entire Superfund process.

Activity YD: Solicit comments during a Public Comment Period.

- Objective: To give community members an opportunity to review and comment on various EPA documents, especially the Proposed Plan. This provides the citizens with meaningful involvement in the process and also provides the Site Team with valuable information for use in making decisions.
- Method: EPA will announce each comment period separately. Announcements will appear in local newspapers and EPA fact sheets; they will include particulars on duration, how to make comments, where to submit comments, etc. EPA may solicit comments on the following information/draft documents: draft CIP, draft summary of test results (not individual tests) and initial interpretation, preliminary findings on the RI and a list of possible remedies likely to be considered, preliminary findings of the FS and a brief summary of the leading contender for the proposed remedy, and preliminary plans for implementation and construction.
- Timing: Comment periods will be announced as appropriate. A comment period is required in conjunction with the announcement of the Proposed Plan and will last a minimum of 30 days.

Activity YE: Prepare and issue a Responsiveness Summary.

- Objective: To summarize comments received during comment periods, to document how the EPA has considered those comments during the decision-making process, and to provide responses to major comments.
- Method: EPA will prepare a Responsiveness Summary as a section of the Record of Decision. The Responsiveness Summary will include four sections: 1. Overview; 2. Background on Community Involvement; 3. Summary of comments

received and Agency responses; 4. Remedial Design/Remedial Action concerns. All information, both technical and nontechnical, will be conveyed in a manner that is easily understood.

· Timing: EPA will issue the Responsiveness Summary as part of the Record of Decision.

Activity YF: Revise the Community Involvement Plan (CIP).

· Objective: To identify and address community needs, issues, or concerns regarding the site or the cleanup remedy that are not currently addressed in this CIP.

· Method: The Revised CIP will update the information presented in the previous version of the CIP.

· Timing: EPA will revise the CIP as community concern warrants or at least every three years until the site is closed out.

4.2 Time Frame Summary for Community Involvement Activities

ACTIVITY	TIME FRAME
Designate an EPA Community Involvement Coordinator (CIC)	Bill Little
Prepare and distribute site fact sheets and technical summaries	Ongoing
Provide a toll-free "800 number" for the community to contact EPA	Currently in operation
Maintain a mailing list for the Site	Ongoing
Establish and maintain Information Repositories	Established, update as needed
Provide Site and Superfund information on the Internet	Currently available; update as needed
Establish and maintain the Administrative Record	Established, update as needed
Conduct special events	As needed
Hold public meetings	As needed
Encourage formation of a Community Advisory Group (CAG)	Ongoing
Make informal visits to community	As needed
Solicit comments during a Public Comment Period	As needed
Revise the Community Involvement Plan (CIP)	As needed, at least every 3 years

**Appendix A
EPA Regional Contacts**

Mike McAteer
On-Scene-Coordinator
U.S. EPA, Region 6 (6SF-ER)
Tel: (214)665-7157
Fax: (214) 668-6660
Mcateer.mike@epa.gov

Janetta Coats
**Technical Assistance Grant Project
Officer**
U.S. EPA, Region 6 (6SF-VO)
Tel: (214) 665-7308
Fax: (214) 665-6660
coats.janetta@epa.gov

Bill Little
**Community Involvement
Coordinator/SEE**
U.S. EPA, Region 6 (6SF-VO)
Tel: (214) 665-8131
Fax: (214) 665-6660
Little.bill@epa.gov

Donn Walters
Regional Public Liaison
U.S. EPA (6SF-VO)
(214) 665-6483
walters.donn@epa.gov

**Appendix B
Local Officials**

Mayor: Joe Smith

City Hall

300 Main Street

P.O. Box 5757

North Little Rock, Arkansas 72119

PO Box 5757

North Little Rock, AR 72119-5757

Phone: (501) 975-3737

Email: jbillings@nlr.ar.gov

Danny Bradley - Chief of Staff

Office of the Mayor

North Little Rock, AR 72114

Phone: (501) 975-8601

Email: dbradley@nlr.ar.gov

**Isaac Henry-Special Assistant to the
Mayor**

City Hall, 300 Main Street

PO Box 5757

North Little Rock, AR 72119-5757

Phone: (501) 975-8780

Email: ihenry@nlr.ar.gov

Julie Fisher - Director of Operations

City Hall, 300 Main St.

PO Box 5757

North Little Rock, AR 72119-5757

Phone: (501) 975-8601

Email: JFisher@nlr.ar.gov

Jim Billings - Director of Special Projects

City Hall, 300 Main St.

**Appendix C
State Officials**

Governor Susanna Martinez

Office of the Governor
490 Old Santa Fe Trail
Room 400
Santa Fe, NM 87501
505-476-2200

Lt. Governor John Sanchez

Office of the Lt. Governor
490 Old Santa Fe Trail
Room 417 Santa Fe, NM 87501
Phone Number: (505) 476-2250
Fax Number: (505) 476-2257

**New Mexico Secretary of State Brad
Winter**

New Mexico Capitol Annex North
325 Don Gaspar, Suite 300
Santa Fe, NM 87501
Toll Free: 1.800.477.3632

Attorney General Hector Balderas

Santa Fe Office

408 Galisteo Street
Villagra Building
Santa Fe, NM 87501
Toll Free: 1-866-627-3249
Phone: (505) 827-6000
Fax: (505) 827-5826

Santa Fe Mailing Address

P.O. Drawer 1508 Santa Fe, NM 87504-
1508

**Appendix D
Federal Elected Officials**

U.S. Senate

Senator Martin Heinrich
Washington D.C.
303 Hart Senate Office Building
Washington, D.C. 20510
p: (202) 224-5521
f: (202) 228-2841

Senator Tom Udall
Washington, DC
531 Hart Senate Office Building
Washington DC, 20510
202) 224-6621

U.S. House of Representatives

Representative French Hill
Washington, DC Office
1229 Longworth House Office Building
Washington, DC 20515
Ph: (205) 225-2506
Fx: (202) 225-5903

Appendix E
Environmental and Active Citizens Groups

**Appendix F
Potentially Responsible Parties**

W. R. Grace

**Appendix G
Media Contacts**

Arkansas Times

5317 John F Kennedy Blvd Ste 6
N Little Rock, AR 72116-6736
(501) 687-1121

Arkansas News Bureau

1 Riverfront Pl Ste 615
N Little Rock, AR 72114-5650
(501) 324-4137

**Appendix H
Meeting Locations**

Sherman Park Community Center
624 Beech Street
North Little Rock, Arkansas 72114

**Appendix I
Repository Locations**

Local Repository:

**William F. Laman
Public Library
2801 Orange Street
North Little Rock, Arkansas 72114**

Appendix J
Other Local Resources