



AECOM
303 E. Wacker Drive, Suite 1400
Chicago, Illinois 60601

312-939-1000 tel
312-939-4198 fax

October 25, 2024

Mr. Kyle Carlson
Peoples Gas Light & Coke Co.
Environmental Services Department
200 E. Randolph Street, 24th Floor
Chicago, IL 60601

RE: Streeterville Thorium Monitoring Results for E North Water St. Peoples Gas System Expansion
Permit No.: CDOT1987116
Permit Addresses: 403-457 E North Water Street

Dear Mr. Carlson:

Pursuant to conditions specified in the Right of Way (ROW) issued by the City of Chicago Department of Public Health (CDPH), radiation monitoring was required to be performed at the above referenced site. AECOM Technical Services, Inc. (AECOM) provided the required radiation surveillance during September 2024 for excavations at the referenced addresses related to the expansion of the Peoples Gas System (refer to map included with CDPH forms). The excavations varied in depth, ranging from 18 inches to 6 feet below ground surface (bgs). Additional details about individual sections of the overall excavation are provided below. All excavations were completed using an excavator.

The monitoring did not indicate that the fill soils were above the removal action level established by the U.S. Environmental Protection Agency (USEPA) for the Streeterville area of Chicago. The USEPA removal action level for Chicago's Streeterville area is 7.1 picocuries per gram (pCi/g) total radium (Ra-226 + Ra-228). Gamma radiation count measurements for the project were recorded using Ludlum Model 2221 survey meters with shielded 2 x 2 inch NaI probes (Model 44-10). Two Ludlum instruments were utilized for screening. The gamma count thresholds indicative of the 7.1 pCi/g total radium removal action level in counts per minute (cpm) with a shielded probe and short cord were 6,323 cpm for S/N 176944. The gamma count threshold indicative of the 7.1 pCi/g removal action level with a shielded probe was 7,245 cpm with a short cord and 6,641 cpm with a long cord for Ludlum S/N 326720.

All excavations, 1 through 36, were conducted along East North Water Street as shown in the figures attached to the ROW form (Attachment 1).

Week of September 2

On September 3, Excavation 1 was excavated to a depth of about 3 feet. Thorium surveying results for the excavated 18-inch lifts ranged from 1,400 to 3,100 cpm. Excavation 2a was excavated to a depth of about 54 inches. Thorium surveying results for the excavated 18-inch lifts ranged from 1,410 to 1,450 cpm. The gamma counts for both activities were below the instrument cutoff of 6,641 cpm.

On September 4, Excavation 3 was excavated to a depth of about 54 inches. Thorium surveying results for the excavated 18-inch lifts ranged from 1,349 to 1,543 cpm. Excavation 2b was excavated to a depth of about 38 inches. Thorium surveying results for the excavated 18-inch lifts ranged from 1,417 to 1,573 cpm. Excavation 4 was excavated to a depth of about 31 inches. Thorium surveying results for the excavated 18-inch lifts ranged from 1,113 to 2,074 cpm. Excavation 5 was excavated to a depth of about 31 inches. Thorium surveying results for the excavated 18-inch lifts ranged from 1,014 to 2,037 cpm. Excavation 6 was excavated to a depth of about 31 inches. Thorium surveying results for the excavated 18-inch lifts ranged from 1,187 to 2,237 cpm. The gamma counts for all activities were below the instrument cutoff of 6,641 cpm.

On September 5, Excavation 7 was excavated to a depth of about 49 inches. Thorium surveying results for the excavated 18-inch lifts ranged from 1,113 to 2,074 cpm. Excavation 8 was excavated to a depth of about 45 inches. Thorium surveying results for the excavated 18-inch lifts ranged from 1,115 to 2,376 cpm. The gamma counts for both activities were below the instrument cutoff of 6,641 cpm.

On September 6, Excavation 9 was excavated to a depth of about 54 inches. Thorium surveying results for the excavated 18-inch lifts ranged from 1,921 to 2,396 cpm. Excavation 10 was excavated to a depth of about 18 inches, with a gamma count of 1,410 cpm. Excavation 11 was excavated to a depth of about 18 inches, with a gamma count of 1,367 cpm. Excavation 12 was excavated to a depth of about 36 inches. Thorium surveying results for the excavated 18-inch lifts ranged from 1,638 to 1,901 cpm. The gamma counts for all activities were below the instrument cutoff of 7,245 cpm.

Week of September 9

On September 9, Excavation 13 was excavated to a depth of about 45 inches. Thorium surveying results for the excavated 18-inch lifts ranged from 1,743 to 1,967 cpm. Excavation 14 was excavated to a depth of about 45 inches. Thorium surveying results for the excavated 18-inch lifts ranged from 1,432 to 2,165 cpm. Excavation 15 was excavated to a depth of about 45 inches. Thorium surveying results for the excavated 18-inch lifts ranged from 1,389 to 1,995 cpm. Excavation 16 was excavated to a depth of about 45 inches. Thorium surveying results for the excavated 18-inch lifts ranged from 1,838 to 2,107 cpm. The gamma counts for all activities were below the instrument cutoff of 7,245 cpm.

On September 10, Excavation 17 was excavated to a depth of about 54 inches. Thorium surveying results for the excavated 18-inch lifts ranged from 1,772 to 2,751 cpm. Excavation 18 was excavated to a depth of about 54 inches. Thorium surveying results for the excavated 18-inch lifts ranged from 1,663 to 2,897 cpm. Excavation 19 was excavated to a depth of about 6 feet. Thorium surveying results for the excavated 18-inch lifts ranged from 1,778 to 2,346 cpm. Excavation 20 was excavated to a depth of about 6 feet. Thorium surveying results for the excavated 18-inch lifts ranged from 1,543 to 2,313 cpm. The gamma counts for all activities were below the instrument cutoff of 7,245 cpm.

On September 11, Excavation 21 was excavated to a depth of about 62 inches. Thorium surveying results for the excavated 18-inch lifts ranged from 1,569 to 2,032 cpm. Excavation 22 was excavated to a depth of about 62 inches. Thorium surveying results for the excavated 18-inch lifts ranged from 2,165 to 2,541 cpm. The gamma counts for both activities were below the instrument cutoff of 6,323 cpm.

Week of September 16

On September 16, Excavation 23 was excavated to a depth of about 36 inches. Thorium surveying results for the excavated 18-inch lifts ranged from 1,911 to 2,323 cpm. Excavation 24 was excavated to a depth of about 36 inches. Thorium surveying results for the excavated 18-inch lifts ranged from 1,964 to 2,364 cpm. Excavation 25 was excavated to a depth of about 36 inches. Thorium surveying results for the excavated 18-inch lifts ranged from 2,156 to 2,174 cpm. Excavation 26 was excavated to a depth of about 36 inches. Thorium surveying results for the excavated 18-inch lifts ranged from 1,824 to 2,586 cpm. Excavation 27 was excavated to a depth of about 36 inches. Thorium surveying results for the excavated 18-inch lifts ranged from 2,019 to 2,618 cpm. The gamma counts for all activities were below the instrument cutoff of 6,641 cpm.

On September 19, Excavation 28 was excavated to a depth of about 36 inches. Thorium surveying results for the excavated 18-inch lifts ranged from 1,807 to 1,910 cpm. Excavation 29 was excavated to a depth of about 36 inches. Thorium surveying results for the excavated 18-inch lifts ranged from 1,510 to 2,011 cpm. Excavation 30 was excavated to a depth of about 36 inches. Thorium surveying results for the excavated 18-inch lifts ranged from 1,797 to 1,944 cpm. Excavation 31 was excavated to a depth of about 36 inches. Thorium surveying results for the excavated 18-inch lifts ranged from 1,724 to 1,816 cpm. Excavation 32 was excavated to a depth of about 36 inches. Thorium surveying results for the excavated 18-inch lifts ranged from 1,904 to 1,910 cpm. The gamma counts for all activities were below the instrument cutoff of 6,641 cpm.

On September 20, Excavation 33 was excavated to a depth of about 36 inches. Thorium surveying results for the excavated 18-inch lifts ranged from 1,814 to 2,017 cpm. Excavation 34 was excavated to a depth of about 36 inches. Thorium surveying results for the excavated 18-inch lifts ranged from 2,011 to 2,180 cpm. Excavation 35 was excavated to a depth of about 36 inches. Thorium surveying results for the excavated 18-inch lifts ranged from 2,114 to 2,580 cpm. Thorium surveying results for the excavated 18-inch lifts ranged from 2,019 to 2,618 cpm. The gamma counts for all activities were below the instrument cutoff of 6,641 cpm.

Week of September 23

On September 23, Excavation 36 was excavated to a depth of about 63 inches. Thorium surveying results for the excavated 18-inch lifts ranged from 1,807 to 4,295 cpm. Excavation 1 was screened to a depth of 36 inches on September 3, but was further excavated to 54 inches on September 23. Thorium surveying results at a depth of 54 inches was 2,160 cpm. The gamma counts for all activities were below the instrument cutoff of 6,323 cpm.

A PDF copy of this letter report will be forwarded via email to the CDPH, and Verneta Simon (USEPA) to fulfill the reporting requirements. Copies of the CDPH forms, annotated drawing, tabulated gamma results, and photographs, are included as attachments to this report. Please contact us with any questions you have regarding this letter or the reported results.

Regards,



Elif Ulger
Environmental Engineer



Steven C. Kornder, Ph.D.
Senior Project Geochemist

cc: Ahmad Nur, CDPH
Verneta Simon, USEPA

Attachments: CDPH Permit Form and Figures
Annotated Drawings, Tabulated Gamma Results and Photographs

ATTACHMENT 1

CDPH PERMIT FORM AND FIGURES



DEPARTMENT OF PUBLIC HEALTH
CITY OF CHICAGO

FORM NO. CDPH.ROW.04 (STREETERVILLE Right-of-Way)

Notice is hereby given that the site you have requested a permit for is recorded with the City of Chicago Department of Public Health (CDPH) as potentially having environmental contamination on the site and adjacent right-of-way. This environmental contamination could present a threat to human health and safety in connection with work performed at the site, or in the adjacent right-of-way, if proper safeguards are not employed.

Review all environmental and other information regarding the worksite provided by CDPH. Additional information regarding the aforementioned environmental contamination is available for review at https://www.epa.gov/lindsay-light. This environmental information must be reviewed and the remainder of this form completed before the permit can be issued if the ground will be exposed or excavated. Please note that for some locations, additional health and safety procedures may be required by law.

Please complete the following:

I have reviewed and understand the documents, maintained by CDPH, regarding environmental contamination of the site and adjacent right-of-way. Further, I will ensure that all work at the subject site and adjacent right-of-way, and any monitoring required including but not limited to radiation monitoring, will be performed in a manner that is protective of human health and the environment and in compliance with all applicable local, state, and federal laws, rules, and regulations, especially those pertaining to worker safety and waste management. I will ensure that the results of any radiation monitoring and/or surveying conducted shall be provided to CDPH and the United States Environmental Protection Agency within two (2) weeks of their completion. If any elevated levels of radioactive material are detected, I will immediately contact CDPH at (312) 745-8332 and the United States Environmental Protection Agency at (800) 424-8802.

Applicant Name (print): Cecilio Martinez Signature: Cecilio Martinez

Site Address and Work Location (Describe exact site location and attach map): 403-457 E NORTH WATER ST

Nature of Work: Installation of new gas main in E North Water right of way

Company Name, Address, Phone No.: Peoples Gas, 200 E Randolph St. Chicago, IL 60601, 312-240-4000

General / Prime Contractor Name, Address, Phone No.: Cecilio Martinez, 4207 W 35th PI Chicago, IL 60637, 312-909-9837

Include subcontractor information if applicable

Safety Officer / Phone No. Kyle Carlson / 414-221-4076

Radiation Contractor / Phone No. (if applicable) AECOM / Steve Kornder: 262-515-7700

Check if City Department Work [] Department Name:

CDOT Permit No.: DOT1987116

Today's Date: 8/15/2024 Expected Start Date: 8/26/2024 CDPH Approval / Date ahmad nur 08/19/2024

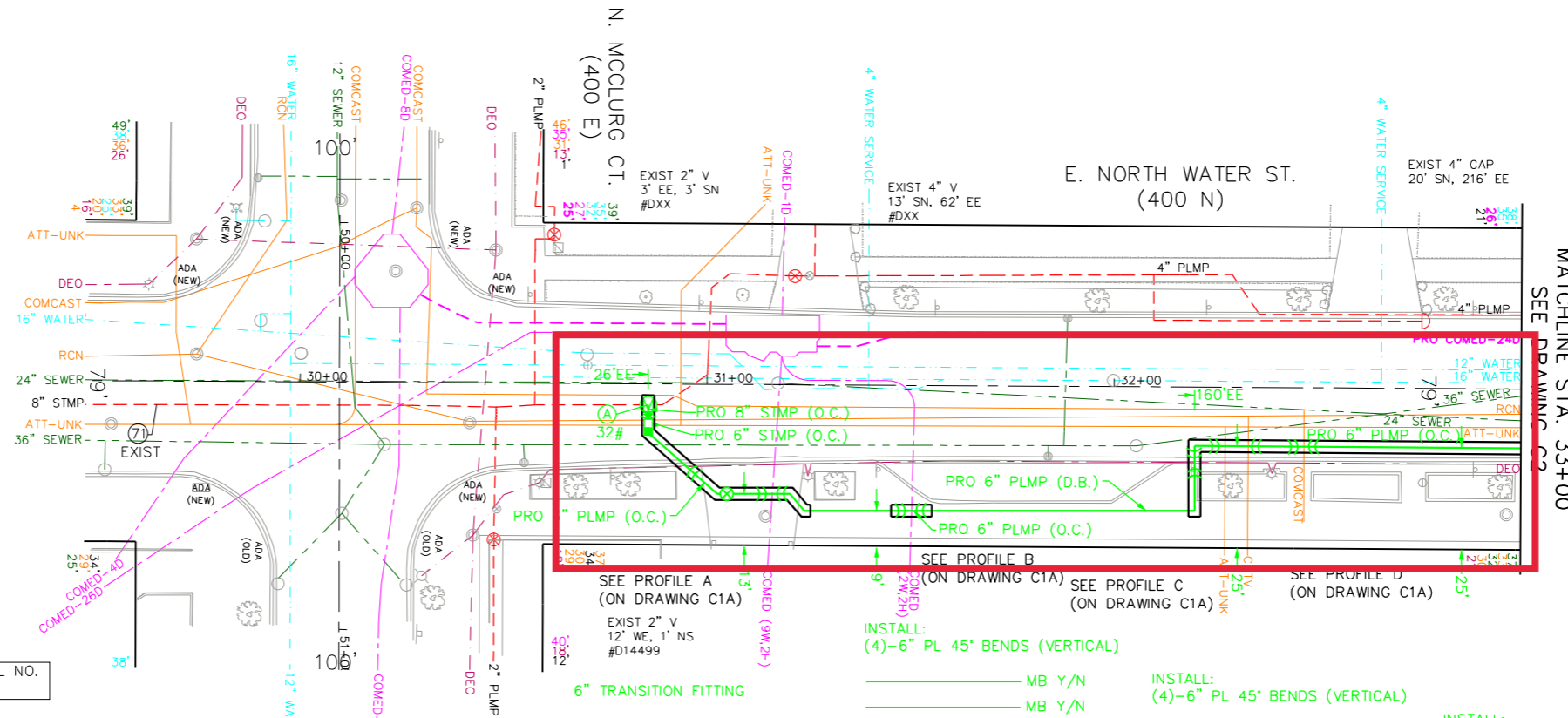
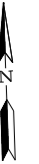
Please upload this form with detailed drawings as an attachment to the CDO T Public Way Opening Permit Application on the City of Chicago's Permit, Inspection, License, Registration, and 811 Chicago Portal (https://ipi.cityofchicago.org/profile) or send via e-mail to: radiation-monitoring@cityofchicago.org

For CDPH Use Only

PGL-CDWM DIRECTIONAL BORE PILOT PROGRAM:

PROPOSED FACILITIES BEING INSTALLED BY DIRECTIONAL BORE METHOD MUST MAINTAIN MINIMUM DWM SEPARATION REQUIREMENTS. CONTACT THE DWM PRIOR TO CONSTRUCTION IF THE PROPOSED FACILITY BEING INSTALLED BY DIRECTIONAL BORE METHOD CANNOT MEET DWM MINIMUM SEPARATION REQUIREMENTS. AT A MINIMUM, THE CONTRACTOR IS REQUIRED TO DO THE FOLLOWING, UNLESS CDOT'S REQUIREMENTS ARE MORE STRINGENT: THE CONTRACTOR IS REQUIRED TO DO TEST HOLES OVER ALL WATER MAINS AND/OR SERVICES THAT ARE TO BE DIRECTIONALLY BORED ACROSS. THE TEST HOLES MUST BE EXCAVATED TO A MINIMUM DEPTH OF 12 INCHES BELOW THE BOTTOM OF THE PROPOSED FACILITY INSTALLATION. PEOPLES GAS SHALL ALSO BE REQUIRED TO BACKFILL THE EXPOSED WATER FACILITY PER DWM REQUIREMENTS (IF CLSM BACKFILL IS UTILIZED THEN IT MUST BE NON-FLY ASH AND THE EXPOSED WATER FACILITY MUST BE ENCASED IN POLYETHYLENE WRAP). FAILURE TO COMPLY WITH THESE REQUIREMENTS MAY RESULT IN ADDITIONAL EXPENSES TO THE PROPOSED PROJECT TO VERIFY THAT ALL WORK CONFORMS TO DWM STANDARDS, AND FUTURE PROJECTS MAY BE REJECTED FOR CONSTRUCTION OR INCUR ADDITIONAL REQUIREMENTS.

FOR EXISTING WATER SERVICE LOCATIONS, REFER TO THE DWM WATER SERVICE PLAT WHICH IS INCLUDED IN THE CONSTRUCTION WORK PACKAGE.



CORROSION CONTROL NO. 1001732071
EXIST

- TIE-IN:
8" M-STOPP
ONTO EXIST 8" STMP
- GAS COMPANY TO TAP
INSTALL:
32# ANODE
- MB Y/N
- INSTALL:
8" x 6" ST RED
- MFR
- INSTALL:
(2)-6" ST 90° BENDS (VERTICAL)
- MB Y/N
- MB Y/N
- MFR

- SEE PROFILE A (ON DRAWING C1A)
EXIST 2" V
12" WE, 1" NS
#D14499
- 6" TRANSITION FITTING
- MB Y/N
- MB Y/N
- MFR
- INSTALL:
6" PL 45° BEND
- MB Y/N
- MFR
- INSTALL:
(2)-6" PL 45° BENDS (VERTICAL)
- MB Y/N
- MB Y/N
- MFR
- INSTALL:
6" PL 45° BEND
- MB Y/N
- MFR
- INSTALL:
6" PL VALVE D-5001526
- MB Y/N
- MFR

- SEE PROFILE B (ON DRAWING C1A)
- INSTALL:
(4)-6" PL 45° BENDS (VERTICAL)
- MB Y/N
- MB Y/N
- MB Y/N
- MFR
- INSTALL:
(2)-6" PL 45° BEND
- MB Y/N
- MB Y/N
- MFR
- INSTALL:
(4)-6" PL 45° BENDS (VERTICAL)
- MB Y/N
- MB Y/N
- MB Y/N
- MFR
- INSTALL:
6" PL 90° BEND
- MB Y/N
- MFR

- SEE PROFILE C (ON DRAWING C1A)
- INSTALL:
(4)-6" PL 45° BENDS (VERTICAL)
- MB Y/N
- MB Y/N
- MB Y/N
- MFR
- INSTALL:
6" PL 90° BENDS
- MB Y/N
- MFR
- INSTALL:
(4)-6" PL 45° BENDS (VERTICAL)
- MB Y/N
- MB Y/N
- MB Y/N
- MFR

- INSTALL:
(4)-6" PL 45° BENDS (VERTICAL)
- MB Y/N
- MB Y/N
- MB Y/N
- MFR
- INSTALL:
(4)-6" PL 45° BENDS (VERTICAL)
- MB Y/N
- MB Y/N
- MFR

PGL - SMP - IFC
CWP-C-0000-01-SE-CN23413
6/24/2024
DOCUMENT CONTROL MASTER



ENGINEERING CONSULTANT:	DESIGNED BY: MS			
DB STERLIN CONSULTANTS, INC. 123 N. Wacker Drive, Suite 2000 Chicago, Illinois 60606 312.857.1006	DRAWN BY: MA			
	CHECKED BY: ML			
FACILITIES HANDLING GAS DESIGNED IN ACCORDANCE WITH THE REQUIREMENTS OF THE OFFICE OF PIPELINE SAFETY OPERATIONS, PART 192 OF TITLE 49 OF THE CODE OF FEDERAL REGULATIONS.	DATE: 11/06/2023			
REV. 0 EFFECTIVE DATE: 01/23/2017	SCALE: AS SHOWN	REV	DATE	BY

SCALE	REV	DATE	BY	DESCRIPTION
AS SHOWN				

NATURAL GAS DELIVERY

CENTRAL SHOP
 C-0000-01-SE-CN23413
 PROPOSED SYSTEM EXPANSION
 400 N. LAKE SHORE DR. NEW SERVICE REQUEST
 INSTALLATION PLAN

QIP CPROJECT WO#		NON-QIP CPROJECT WO#	MX4323413
QIP WBS# MAINS	.	NON-QIP WBS# MAINS	Q-3527-100332
QIP WBS# SERVICES	.	NON-QIP WBS# SERVICES	Q-3505-100055
QIP ENGINEERING WO#	.	NON-QIP ENGINEERING WO#	MX4323416
QIP INST_GM_D WO#	.	NON-QIP INST_GM_D WO#	MX4861598
OUF FILE #	EFP-125570	DRAWING NO.	SHEET NO.
		C1	5 OF 25

PGL-CDWM DIRECTIONAL BORE PILOT PROGRAM:

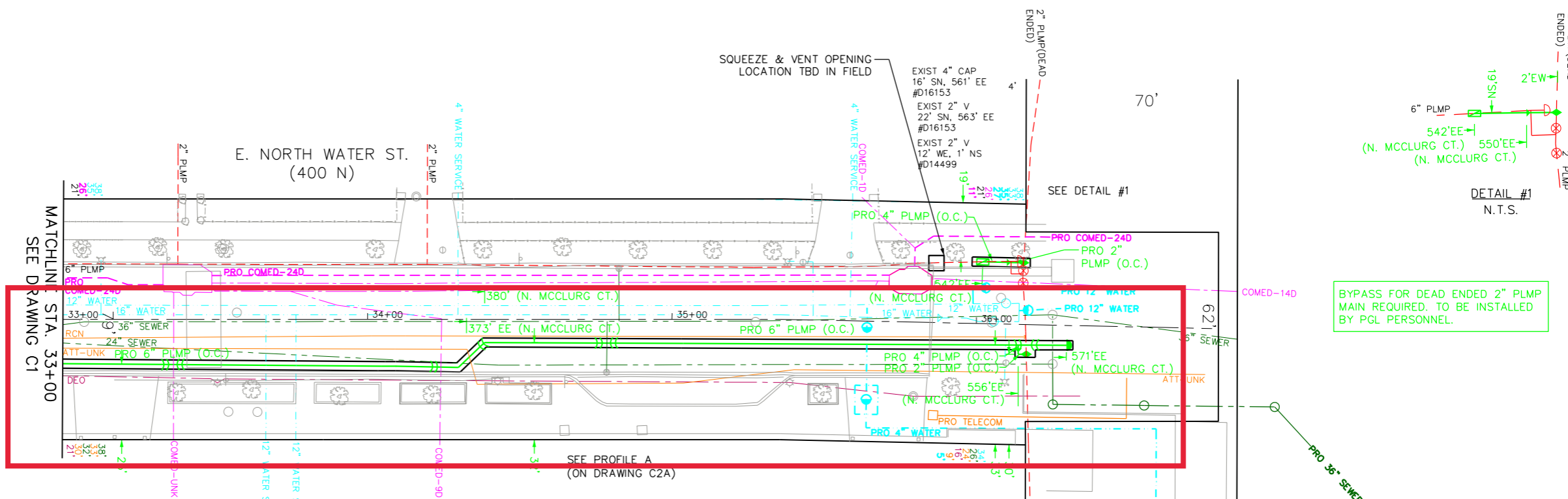
PROPOSED FACILITIES BEING INSTALLED BY DIRECTIONAL BORE METHOD MUST MAINTAIN MINIMUM DWM SEPARATION REQUIREMENTS. CONTACT THE DWM PRIOR TO CONSTRUCTION IF THE PROPOSED FACILITY BEING INSTALLED BY DIRECTIONAL BORE METHOD CANNOT MEET DWM MINIMUM SEPARATION REQUIREMENTS. AT A MINIMUM, THE CONTRACTOR IS REQUIRED TO DO THE FOLLOWING, UNLESS CDOT'S REQUIREMENTS ARE MORE STRINGENT: THE CONTRACTOR IS REQUIRED TO DO TEST HOLES OVER ALL WATER MAINS AND/OR SERVICES THAT ARE TO BE DIRECTIONALLY BORED ACROSS. THE TEST HOLES MUST BE EXCAVATED TO A MINIMUM DEPTH OF 12 INCHES BELOW THE BOTTOM OF THE PROPOSED FACILITY INSTALLATION. PEOPLES GAS SHALL ALSO BE REQUIRED TO BACKFILL THE EXPOSED WATER FACILITY PER DWM REQUIREMENTS (IF CLSM BACKFILL IS UTILIZED THEN IT MUST BE NON-FLY ASH AND THE EXPOSED WATER FACILITY MUST BE ENCASED IN POLYETHYLENE WRAP). FAILURE TO COMPLY WITH THESE REQUIREMENTS MAY RESULT IN ADDITIONAL EXPENSES TO THE PROPOSED PROJECT TO VERIFY THAT ALL WORK CONFORMS TO DWM STANDARDS, AND FUTURE PROJECTS MAY BE REJECTED FOR CONSTRUCTION OR INCUR ADDITIONAL REQUIREMENTS.

FOR EXISTING WATER SERVICE LOCATIONS, REFER TO THE DWM WATER SERVICE PLAT WHICH IS INCLUDED IN THE CONSTRUCTION WORK PACKAGE.

TIE-IN:
GAS COMPANY TO TIE-INTO
EX. 4" PLMP WITH A
4" ELECTROFUSION COUPLING
MB Y/N
MFR

TIE-IN:
2" x 2" HV TAPPING TEE
ONTO EXIST 2" PLMP
MB Y/N
MFR

GAS COMPANY TO TAP
INSTALL:
4" x 2" PL RED
MB Y/N
MFR



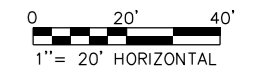
DETAIL #1
N.T.S.
BYPASS FOR DEAD ENDED 2" PLMP MAIN REQUIRED. TO BE INSTALLED BY PGL PERSONNEL.

NOTE:
CONTRACTOR TO USE EXTREME CAUTION WHEN CROSSING OVER THE 12" WATER SERVICES IN E. NORTH WATER ST. SEE WATER DEPT GENERAL NOTE ON SHEET 3

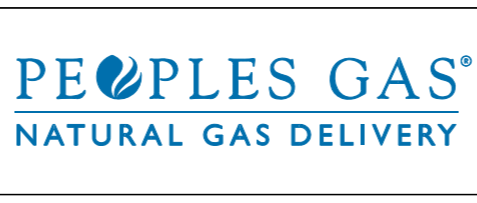
NOTE:
CONTRACTOR TO USE EXTREME CAUTION WHEN CROSSING OVER THE 8" FIRE HYDRANT LEADER IN E. NORTH WATER ST. SEE WATER DEPT GENERAL NOTE ON SHEET 3

INSTALL: (4)-6" PL 45° BENDS (VERTICAL) MB Y/N
INSTALL: (2)-6" PL 45° BENDS (VERTICAL) MB Y/N
INSTALL: 6" PL 45° BENDS MFR
INSTALL: (2)-6" PL 45° BENDS (VERTICAL) MB Y/N
INSTALL: 6" PL 45° BENDS MB Y/N
INSTALL: MFR MFR
INSTALL: (4)-6" PL 45° BENDS (VERTICAL) MB Y/N
INSTALL: 6" x 4" PL TEE MB Y/N
INSTALL: 6" x 2" PL RED MFR
INSTALL: (4)-6" PL 45° BENDS (VERTICAL) MB Y/N
INSTALL: 2" PL 90° BEND MFR
INSTALL: (4)-6" PL 45° BENDS (VERTICAL) MB Y/N
INSTALL: 2" x 2" HV TAPPING TEE ONTO EXIST 2" PLMP MB Y/N
INSTALL: (4)-4" PL 45° BENDS (VERTICAL) MB Y/N
INSTALL: 6" PL CAP MFR
INSTALL: (4)-6" PL 45° BENDS (VERTICAL) MB Y/N
INSTALL: MFR MFR

PGL - SMP - IFC
CWP-C-0000-01-SE-CN23413
6/24/2024
DOCUMENT CONTROL MASTER

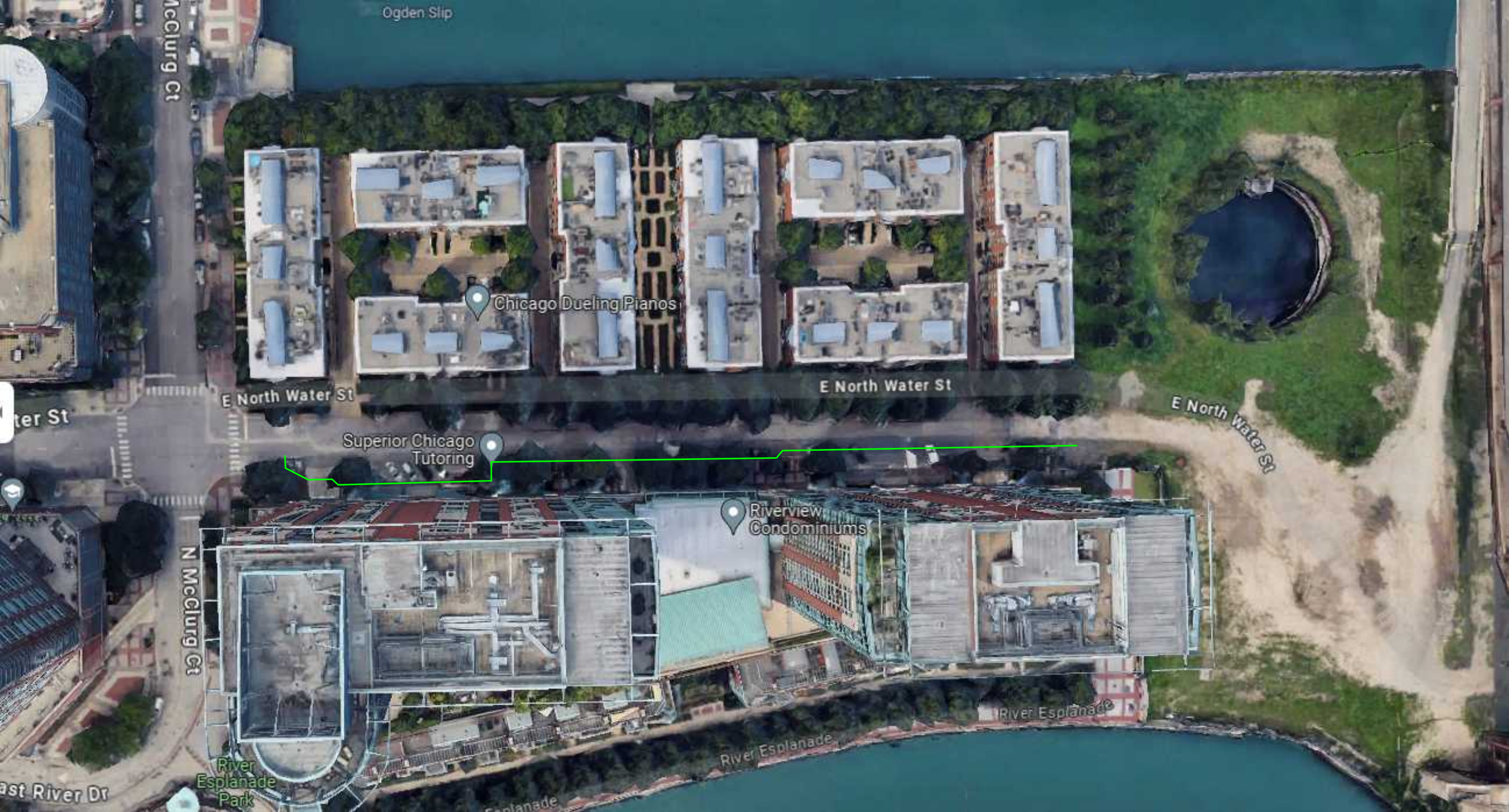


ENGINEERING CONSULTANT: DBS DB STERLIN CONSULTANTS, INC. 123 N. Wacker Drive, Suite 2000 Chicago, Illinois 60606 312.857.1006	DESIGNED BY: MS			
	DRAWN BY: MA			
	CHECKED BY: ML			
FACILITIES HANDLING GAS DESIGNED IN ACCORDANCE WITH THE REQUIREMENTS OF THE OFFICE OF PIPELINE SAFETY OPERATIONS, PART 192 OF TITLE 49 OF THE CODE OF FEDERAL REGULATIONS. REV. 0 EFFECTIVE DATE: 01/23/2017	DATE: 11/06/2023			
	SCALE: AS SHOWN	REV	DATE	BY
				DESCRIPTION



CENTRAL SHOP
C-0000-01-SE-CN23413
PROPOSED SYSTEM EXPANSION
400 N. LAKE SHORE DR. NEW SERVICE REQUEST
INSTALLATION PLAN

QIP CPROJECT WO#		NON-QIP CPROJECT WO#	MX4323413
QIP WBS# MAINS	.	NON-QIP WBS# MAINS	Q-3527-100332
QIP WBS# SERVICES	.	NON-QIP WBS# SERVICES	Q-3505-100055
QIP ENGINEERING WO#	.	NON-QIP ENGINEERING WO#	MX4323416
QIP INST_GM_D WO#	.	NON-QIP INST_GM_D WO#	MX4861598
OUF FILE #	EFP-125570	DRAWING NO.	SHEET NO.
		C2	7 OF 25



Ogden Slip

McClurg Ct

Chicago Dueling Pianos

E North Water St

E North Water St

E North Water St

Superior Chicago Tutoring

Riverview Condominiums

N McClurg Ct

River Esplanade

River Esplanade

River Esplanade Park

East River Dr

ATTACHMENT 2

ANNOTATED DRAWING, TABULATED GAMMA RESULTS AND PHOTOGRAPHS

PGL-CDWM DIRECTIONAL BORE PILOT PROGRAM:

PROPOSED FACILITIES BEING INSTALLED BY DIRECTIONAL BORE METHOD MUST MAINTAIN MINIMUM DWM SEPARATION REQUIREMENTS. CONTACT THE DWM PRIOR TO CONSTRUCTION IF THE PROPOSED FACILITY BEING INSTALLED BY DIRECTIONAL BORE METHOD CANNOT MEET DWM MINIMUM SEPARATION REQUIREMENTS. AT A MINIMUM, THE CONTRACTOR IS REQUIRED TO DO THE FOLLOWING, UNLESS CDOT'S REQUIREMENTS ARE MORE STRINGENT: THE CONTRACTOR IS REQUIRED TO DO TEST HOLES OVER ALL WATER MAINS AND/OR SERVICES THAT ARE TO BE DIRECTIONALLY BORED ACROSS. THE TEST HOLES MUST BE EXCAVATED TO A MINIMUM DEPTH OF 12 INCHES BELOW THE BOTTOM OF THE PROPOSED FACILITY INSTALLATION. PEOPLES GAS SHALL ALSO BE REQUIRED TO BACKFILL THE EXPOSED WATER FACILITY PER DWM REQUIREMENTS (IF CLSM BACKFILL IS UTILIZED THEN IT MUST BE NON-FLY ASH AND THE EXPOSED WATER FACILITY MUST BE ENCASED IN POLYETHYLENE WRAP). FAILURE TO COMPLY WITH THESE REQUIREMENTS MAY RESULT IN ADDITIONAL EXPENSES TO THE PROPOSED PROJECT TO VERIFY THAT ALL WORK CONFORMS TO DWM STANDARDS, AND FUTURE PROJECTS MAY BE REJECTED FOR CONSTRUCTION OR INCUR ADDITIONAL REQUIREMENTS.

FOR EXISTING WATER SERVICE LOCATIONS, REFER TO THE DWM WATER SERVICE PLAT WHICH IS INCLUDED IN THE CONSTRUCTION WORK PACKAGE.

9/23 - Excavation 36
Term Depth: 63"
Max Reading: 4,295

9/3 & 9/23 - Excavation 1
Term Depth: 54"
Max Reading: 3,100

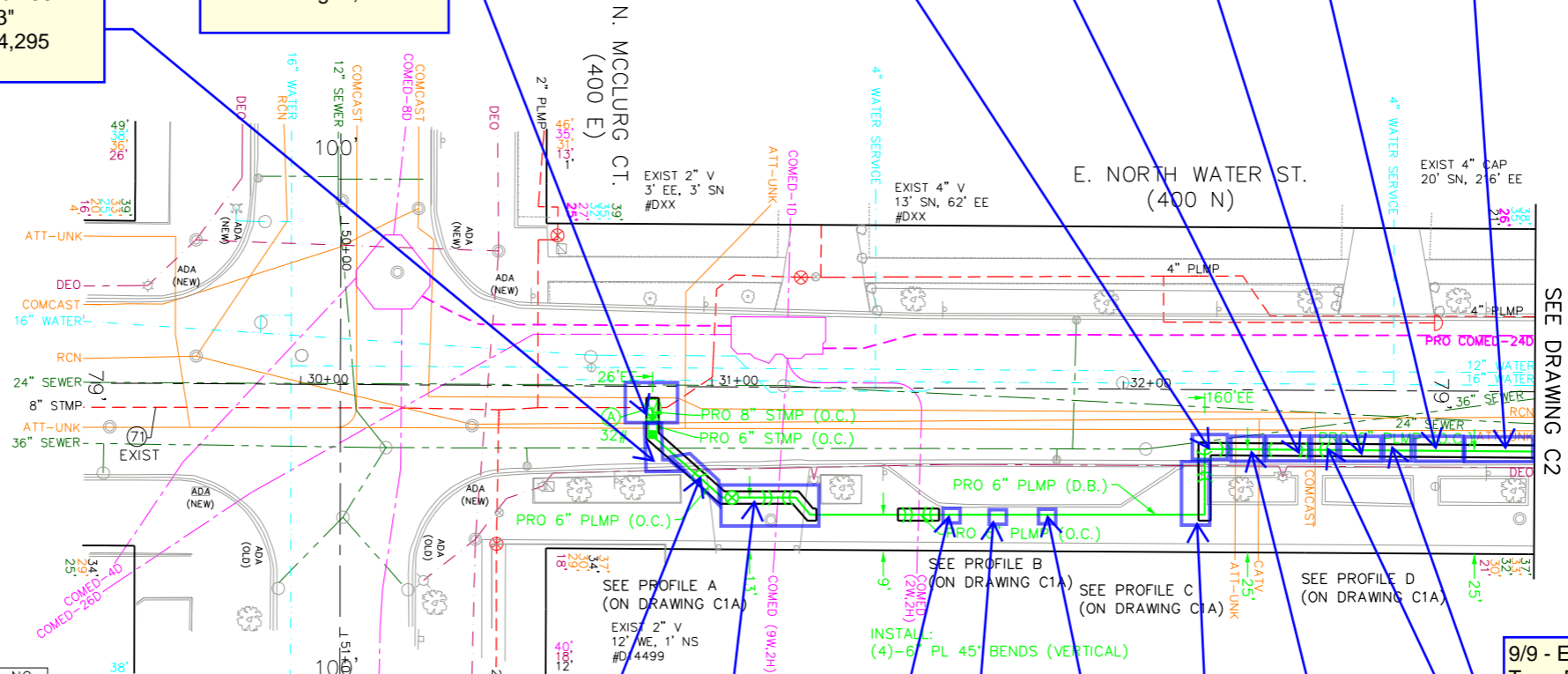
9/4 - Excavation 2b
Term Depth: 38"
Max Reading: 1,589

9/4 - Excavation 6
Term Depth: 31"
Max Reading: 2,237

9/4 - Excavation 5
Term Depth: 31"
Max Reading: 2,037

9/4 - Excavation 4
Term Depth: 31"
Max Reading: 2,074

9/4 - Excavation 3
Term Depth: 54"
Max Reading: 1,543



MATCHLINE STA. 33+00
SEE DRAWING C2

Legend

- 9/# - Excavation #: Date of excavation - excavation number
- Term Depth: Termination Depth in inches
- Max Reading: Maximum Gama reading at excavation location
- Screening / Excavation Location

Note

- Termination (Term) depth is measured from the top of pavement in inches.
- Sidewalk is ~6" higher than roadway.

PGL - SMP - IFC
CWP-C-0000-01-SE-CN23413
6/24/2024
DOCUMENT CONTROL MASTER

0 20' 40'
1" = 20' HORIZONTAL

ENGINEERING CONSULTANT:
DBS DB STERLIN CONSULTANTS, INC.
123 N. Wacker Drive, Suite 2000
Chicago, Illinois 60606
312.857.1006

FACILITIES HANDLING GAS DESIGNED IN ACCORDANCE WITH THE REQUIREMENTS OF THE OFFICE OF PIPELINE SAFETY OPERATIONS, PART 192 OF TITLE 49 OF THE CODE OF FEDERAL REGULATIONS.
REV. 0 EFFECTIVE DATE: 01/23/2017

DESIGNED BY:	MS			
DRAWN BY:	MA			
CHECKED BY:	ML			
DATE:	11/06/2023			
SCALE:	AS SHOWN	REV	DATE	BY
				DESCRIPTION

PEOPLES GAS
NATURAL GAS DELIVERY

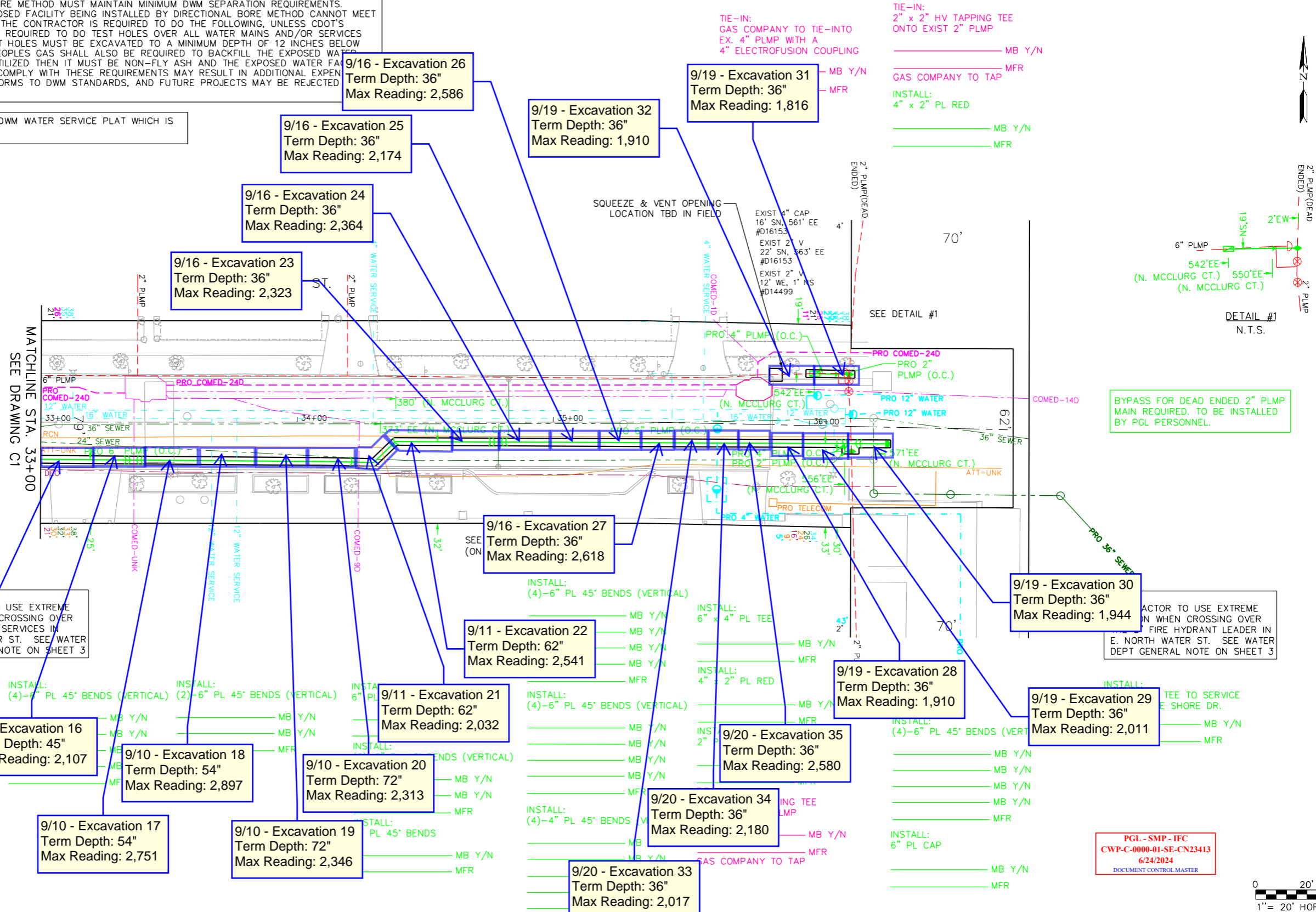
CENTRAL SHOP
C-0000-01-SE-CN23413
PROPOSED SYSTEM EXPANSION
400 N. LAKE SHORE DR. NEW SERVICE REQUEST
INSTALLATION PLAN

QIP CPROJECT WO#		NON-QIP CPROJECT WO#	MX4323413
QIP WBS# MAINS		NON-QIP WBS# MAINS	Q-3527-100332
QIP WBS# SERVICES		NON-QIP WBS# SERVICES	Q-3505-100055
QIP ENGINEERING WO#		NON-QIP ENGINEERING WO#	MX4323416
QIP INST_GM_D WO#		NON-QIP INST_GM_D WO#	MX4861598
OUF FILE #	EFP-125570	DRAWING NO.	SHEET NO.
		C1	5 OF 25

PGL-CDWM DIRECTIONAL BORE PILOT PROGRAM:

PROPOSED FACILITIES BEING INSTALLED BY DIRECTIONAL BORE METHOD MUST MAINTAIN MINIMUM DWM SEPARATION REQUIREMENTS. CONTACT THE DWM PRIOR TO CONSTRUCTION IF THE PROPOSED FACILITY BEING INSTALLED BY DIRECTIONAL BORE METHOD CANNOT MEET DWM MINIMUM SEPARATION REQUIREMENTS. AT A MINIMUM, THE CONTRACTOR IS REQUIRED TO DO THE FOLLOWING, UNLESS CDOT'S REQUIREMENTS ARE MORE STRINGENT: THE CONTRACTOR IS REQUIRED TO DO TEST HOLES OVER ALL WATER MAINS AND/OR SERVICES THAT ARE TO BE DIRECTIONALLY BORED ACROSS. THE TEST HOLES MUST BE EXCAVATED TO A MINIMUM DEPTH OF 12 INCHES BELOW THE BOTTOM OF THE PROPOSED FACILITY INSTALLATION. PEOPLES GAS SHALL ALSO BE REQUIRED TO BACKFILL THE EXPOSED WATER FACILITY PER DWM REQUIREMENTS (IF CLSM BACKFILL IS UTILIZED THEN IT MUST BE NON-FLY ASH AND THE EXPOSED WATER FACILITY MUST BE ENCASED IN POLYETHYLENE WRAP). FAILURE TO COMPLY WITH THESE REQUIREMENTS MAY RESULT IN ADDITIONAL EXPENSE TO THE PROPOSED PROJECT TO VERIFY THAT ALL WORK CONFORMS TO DWM STANDARDS, AND FUTURE PROJECTS MAY BE REJECTED FOR CONSTRUCTION OR INCUR ADDITIONAL REQUIREMENTS.

FOR EXISTING WATER SERVICE LOCATIONS, REFER TO THE DWM WATER SERVICE PLAT WHICH IS INCLUDED IN THE CONSTRUCTION WORK PACKAGE.



NOTE: CONTRACTOR TO USE EXTREME CAUTION WHEN CROSSING OVER THE 12" WATER SERVICES IN E. NORTH WATER ST. SEE WATER DEPT GENERAL NOTE ON SHEET 3

CONTRACTOR TO USE EXTREME CAUTION WHEN CROSSING OVER FIRE HYDRANT LEADER IN E. NORTH WATER ST. SEE WATER DEPT GENERAL NOTE ON SHEET 3

PGL-SMP-IFC
CWP-C-0000-01-SE-CN23413
6/24/2024
DOCUMENT CONTROL MASTER



ENGINEERING CONSULTANT:	DESIGNED BY: MS			
DBS DB STERLIN CONSULTANTS, INC. 123 N. Wacker Drive, Suite 2000 Chicago, Illinois 60606 312.857.1006	DRAWN BY: MA			
FACILITIES HANDLING GAS DESIGNED IN ACCORDANCE WITH THE REQUIREMENTS OF THE OFFICE OF PIPELINE SAFETY OPERATIONS, PART 192 OF TITLE 49 OF THE CODE OF FEDERAL REGULATIONS.	CHECKED BY: ML			
REV. 0 EFFECTIVE DATE: 01/23/2017	DATE: 11/06/2023			
	SCALE: AS SHOWN	REV	DATE	BY
				DESCRIPTION

PEOPLES GAS
NATURAL GAS DELIVERY

CENTRAL SHOP
C-0000-01-SE-CN23413
PROPOSED SYSTEM EXPANSION
400 N. LAKE SHORE DR. NEW SERVICE REQUEST
INSTALLATION PLAN

QIP CPROJECT WO#		NON-QIP CPROJECT WO#	MX4323413
QIP WBS# MAINS		NON-QIP WBS# MAINS	Q-3527-100332
QIP WBS# SERVICES		NON-QIP WBS# SERVICES	Q-3505-100055
QIP ENGINEERING WO#		NON-QIP ENGINEERING WO#	MX4323416
QIP INST_GM_D WO#		NON-QIP INST_GM_D WO#	MX4861598
OUF FILE #	EFP-125570	DRAWING NO.	SHEET NO.
		C2	7 OF 25

Gamma Survey Results
E. North Water Street Peoples Gas System Expansion

Survey Equipment

CDOT No:	CDOT1987116
Ludlum 2221 S/N:	Various, See below
Ludlum Probe S/N	Various, See below
Cutoff (cpm)	Various, See below
Date of Screening:	9/03/2024 through 9/23/2024

Survey Results

Day	Equipment	Ludlum Cutoff (cpm)	Location	Depth (inches)	Maximum Readings (cpm)
9/3/2024	Ludlum SN: 326720 (Probe SN: 360158)	6641	1	0-4"	Asphalt
				4-9"	Concrete
				9-18"	3,100
				18-36"	1,400
			2a	0-4"	Asphalt
				4-9"	Concrete
				9-18"	1,410
				18-36"	1,440
				36-54"	1,450
			9/4/2024	Ludlum SN: 326720 (Probe SN: 360158)	6641
4-9"	Concrete				
9-18"	1,349				
18-36"	1,349				
36-54"	1,543				
2b	0-4"	Asphalt			
	4-9"	Concrete			
	9-18"	1,417			
	18-36"	1,589			
	38"	1,573			
4	0-4"	Asphalt			
	4-9"	Concrete			
	13"	1,113			
	31"	2,074			
5	0-4"	Asphalt			
	4-9"	Concrete			
	13"	1,014			
	31"	2,037			
6	0-4"	Asphalt			
	4-9"	Concrete			
	9-13"	1,187			
	13-31"	2,237			

Gamma Survey Results
E. North Water Street Peoples Gas System Expansion

9/5/2024	Ludlum SN: 326720 (Probe SN: 360158)	6641	7	0-4"	Asphalt	
				4-9"	Concrete	
				9-13"	1,113	
				13-31"	2,074	
				31-49"	2,005	
			8	0-9"	Concrete (Driveway)	
9-27"	2,348					
27-45"	2,376					
9/6/2024	Ludlum SN: 326720 (Probe SN: 360158)	7245	9	0-2"	Sidewalk Paver	
				2-6"	Concrete	
				6-18"	2,396	
				18-36"	1,921	
			10	36-54"	1,991	
				0-2"	Sidewalk Paver	
				2-6"	Concrete	
			11	6-18"	1,410	
				0-2"	Sidewalk Paver	
				2-6"	Concrete	
			12	6-18"	1,367	
				0-2"	Sidewalk Paver	
2-6"	Concrete					
6-18"	1,638					
9/9/2024	Ludlum SN: 326720 (Probe SN: 360158)	7245	13	18-36"	1,901	
				45"	1,967	
				14	0-3"	Asphalt
					3-9"	Concrete
			9-18"		1,432	
			18-36"		1,808	
			15	45"	2,165	
				0-3"	Asphalt	
				3-9"	Concrete	
				9-12"	1,736	
				12-18"	1,901	
			16	18-36"	1,995	
36-45"	1,389					
0-4"	Asphalt					
4-9"	Concrete					
9-12"	2,001					
12-18"	2,107					
18-36"	1,972					
36-45"	1,838					

Gamma Survey Results
E. North Water Street Peoples Gas System Expansion

9/10/2024	Ludlum SN: 326720 (Probe SN: 360158)	7245	17	0-4"	Asphalt
				4-9"	Concrete
				9-13"	2,751
				13-18"	1,894
				18-36"	1,772
				36-54"	2,354
			18	0-4"	Asphalt
				4-9"	Concrete
				9-13"	2,897
				13-18"	1,663
				18-36"	1,733
				36-54"	2,277
			19	0-4"	Asphalt
				4-9"	Concrete
				9-13"	1,863
		13-18"		1,973	
		18-36"		2,264	
		36-54"		2,346	
		20	0-4"	Asphalt	
			4-9"	Concrete	
			9-13"	2,252	
13-18"	1,927				
18-36"	1,543				
36-54"	1,730				
9/11/2024	Ludlum SN: 176944 (Probe SN: RN21187)	6323	21	0-3"	Asphalt
				3-9"	Concrete
				9-12"	1,992
				12-30"	1,634
				30-48"	2,032
				48-62"	1,569
		22	0-3"	Asphalt	
			3-9"	Concrete	
			9-12"	2,438	
			12-30"	2,165	
			30-48"	2,452	
			48-62"	2,541	

Gamma Survey Results
E. North Water Street Peoples Gas System Expansion

9/16/2024	Ludlum SN: 326720 (Probe SN: 360158)	6641	23	0-3"	Asphalt
				3-9"	Concrete
				9-18"	2,323
				18-36"	1,911
			24	0-3"	Asphalt
				3-9"	Concrete
				9-18"	2,364
				18-36"	1,964
			25	0-3"	Asphalt
				3-9"	Concrete
				9-18"	2,156
				18-36"	2,174
			26	0-3"	Asphalt
				3-9"	Concrete
				9-18"	1,824
				18-36"	2,586
27	0-3"	Asphalt			
	3-9"	Concrete			
	9-18"	2,019			
	18-36"	2,618			
9/19/2024	Ludlum SN: 326720 (Probe SN: 360158)	6641	28	0-3"	Asphalt
				3-9"	Concrete
				9-18"	1,807
				18-36"	1,910
			29	0-3"	Asphalt
				3-9"	Concrete
				9-18"	1,510
				18-36"	2,011
			30	0-3"	Asphalt
				3-9"	Concrete
				9-18"	1,797
				18-36"	1,944
			31	0-3"	Asphalt
				3-9"	Concrete
				9-18"	1,724
				18-36"	1,816
32	0-3"	Asphalt			
	3-9"	Concrete			
	9-18"	1,910			
	18-36"	1,904			
9/20/2024	Ludlum SN: 326720 (Probe SN: 360158)	6641	33	0-18"	1,814
				18-36"	2,017
			34	0-18"	2,011
				18-36"	2,180
			35	0-18"	2,114
				18-36"	2,580

Gamma Survey Results
E. North Water Street Peoples Gas System Expansion

9/23/2024	Ludlum SN: 176944 (Probe SN: RN21187)	6323	36	0-4"	Asphalt
				4-9"	Concrete
				9-13"	2,111
				13-18"	2,193
				18-36"	4,295
				36-45"	2,511
				45-54"	1,807
				63	1,880
			1	54"	2,160

PICTURE 1: VIEW OF EXCAVATION FACING EAST, WESTERN END OF EXCAVATION.



PICTURE 2: VIEW OF EXCAVATION FACING EAST, INSIDE OF THE 400 LSD PROPERTY GATE.



PICTURE 3: VIEW OF EXCAVATION RUNNING EAST TOWARDS 400 LSD



PICTURE 4: VIEW OF EXCAVATION RUNNING EAST ALONG E NORTH WATER STREET.



PICTURE 5: VIEW OF EXCAVATION ON SIDEWALK INFRONT OF 415 E NORTH WATER STREET CONDOS, FACING NORTHEAST.



PICTURE 6: VIEW OF EXCAVATION, FACING EAST, COMPLETED ALONG DRIVEWAY LEADING INTO THE RIVERVIEW RECEIVING GARAGE.

