



# Excavation Phase Begins at Former Velsicol Plant Site

**Velsicol Chemical Corp. Superfund Site**  
St. Louis, Michigan

October 2022

## You are invited

EPA and EGLE will be providing a public availability session at St. Louis City Hall to talk about the upcoming work. Representatives from EPA and EGLE will be available to talk about the project and take your questions. See the “Upcoming Availability Session” box at the bottom of this page for details.

## For more information

Please contact any of the following team members with questions:

### EPA

#### **Thomas Alcamo**

Remedial Project Manager

312-886-7278

[alcamo.thomas@epa.gov](mailto:alcamo.thomas@epa.gov)

#### **Diane Russell**

Community Involvement Coordinator

989-395-3493

[russell.diane@epa.gov](mailto:russell.diane@epa.gov)

*You may also call EPA toll-free:*

*800-621-8431, weekdays, 9:00 a.m.*

*to 5:30 p.m.*

### EGLE

#### **Erik Martinson - Project Manager**

517-285-3978

[martinsone@michigan.gov](mailto:martinsone@michigan.gov)

### City of St. Louis

989-681-2137

[www.stlouismi.com/contact-us/](http://www.stlouismi.com/contact-us/)

## Webpage

For more details about the site, and upcoming work at the Velsicol Plant site visit the webpage at:

[www.epa.gov/superfund/velsicol-chemical-michigan](http://www.epa.gov/superfund/velsicol-chemical-michigan)



## Upcoming Work in the Velsicol Plant Site

As part of the cleanup activities, two areas on the site will be excavated, Potential Source Area 1 (PSA1) and Potential Source

Area 2 (PSA2) (*see maps on the next page for the excavation areas*). PSA1 is located near the fence line, and shoring will be needed to prevent the excavation from collapsing. The shoring will consist of metal sheet piling and will be placed along portions of the southern and eastern site boundary and will not be removed. Certified contractors under EPA’s and EGLE’s oversight will start installing the sheet piling into the ground in the third week of October. Excavation in PSA2, located away from the fence line, is also scheduled to begin this fall. Excavation work will continue until the winter sets in this year and will restart in the spring of 2023. The excavated material will be taken off-site for disposal in a permitted landfill. Work is expected to take place Monday through Saturday, 8 a.m. – 5 p.m. All truck traffic will enter and leave the site through the gate located off State Route M-46 (Washington Ave). EPA anticipates the excavation will be completed by the fall of 2023, and site restoration activities will be finished in 2024.



## Upcoming Availability Session

EPA and EGLE will provide an in-person availability session on

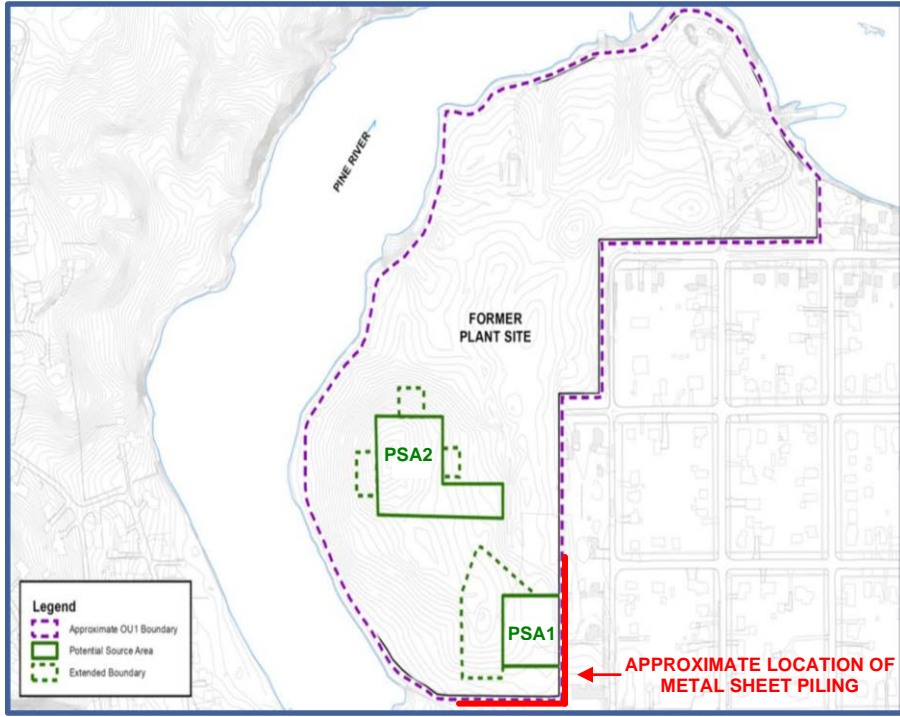
**Wednesday, October 12, from 4:30 to 7:30 p.m.** in the

**Community Room of St. Louis City Hall, 300 N Mill St., St. Louis.**

Representatives from both agencies will answer questions and talk one-on-one with members of the public regarding the upcoming project at the former Velsicol Plant site.

## About the Velsicol Chemical Corp. Site

The Velsicol Chemical Corp. operated from 1936 through 1977 and manufactured a wide variety of chemicals. Site spills and chemical discharges into the Pine River impacted sediment, surface soils and groundwater. The site was divided into four Operable Units to make the cleanup response more efficient. The former Velsicol Plant property is known as Operable Unit 1, or OU1. The upcoming shoring and excavation activities in PSA1 and PSA2, are all taking place in OU1.




Location of excavation areas, PSA1 and PSA2, in the former Velsicol plant site.



Example of metal sheet piling installation.

## VELSICOL CHEMICAL CORP. SITE: Excavation Phase Begins at Former Velsicol Plant Site


 Reproduced on Recycled Paper