



# Work Begins at Verburg Park, Park and Trail Closures

Allied Paper/Portage Creek/Kalamazoo River Site  
Kalamazoo, Michigan

February 2022

## Contact EPA

If you want to know more about the various cleanup projects along the Kalamazoo River, contact:

*For technical questions:*

### EPA

**Jim Saric – Remedial Project Manager**

312-886-0992

saric.james@epa.gov

### EGLE

**Dan Peabody – Project Manager**

517-285-3924

peabodyd@michigan.gov

*For general questions:*

**Diane Russell**

**Community Involvement**

**Coordinator**

989-395-3493

russell.diane@epa.gov

You may also call EPA toll-free:  
800-621-8431, weekdays, 9:00 a.m.  
to 5:30 p.m.

You can learn more about the cleanup  
online at:

[www.epa.gov/superfund/allied-paper-kalamazoo](http://www.epa.gov/superfund/allied-paper-kalamazoo).

*Para la versión en español de esta hoja  
informativa, visite*

[www.epa.gov/superfund/allied-paper-kalamazoo](http://www.epa.gov/superfund/allied-paper-kalamazoo)



U.S. Environmental Protection Agency is overseeing the removal of polychlorinated biphenyls, or PCB, contaminated sediment within Verburg Park Pond and along the banks of the Kalamazoo River (see map, page 2). This work is part of a larger cleanup of a section of the Kalamazoo River, which EPA has designated as “Area 1” (see map in side panel below). Georgia-Pacific LLC and International Paper Company will be conducting cleanup activities starting in early this year and expect the project to take three years to complete. Throughout this project, EPA will be coordinating with Michigan Department of Environment, Great Lakes, and Energy, or EGLE, and the Michigan Department of Natural Resources.



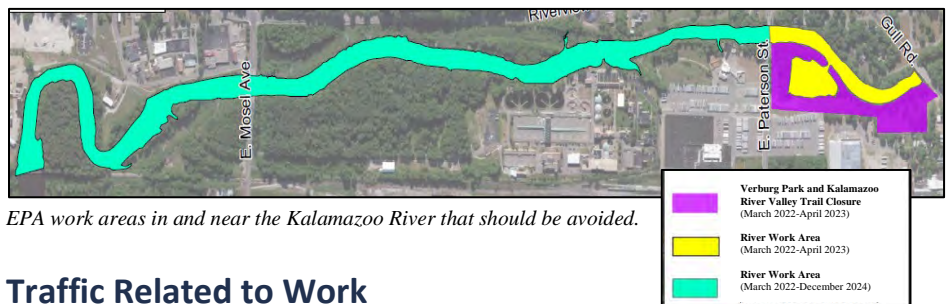
## Upcoming Work in Your Area

Work to remove contaminants is expected to begin in early this year in the Verburg Park area, which will be closed to the public for the project duration. Workers will begin by removing trees and debris and setting up staging areas for equipment in the park.

The staging areas are to dry the removed, contaminated river sediment prior to trucking the material off site for disposal at permitted landfills. Work hours will be from dawn to dusk, Monday through Saturday. The removal process is expected to extend through December 2024.

During this work, we are asking the public to avoid river use from Gull Road to downstream of East Mosel Avenue. More upstream work is likely to occur at a future date. In addition, the Kalamazoo River Valley Trail will be closed and rerouted from Gull Road to Paterson Street.

Restoration of Verburg Park will be completed as construction finishes in December 2022, but it is likely that some restoration may occur in spring 2023.



EPA work areas in and near the Kalamazoo River that should be avoided.

## Traffic Related to Work

As a result of the construction activities, vehicle traffic will increase for the duration of the project. The proposed trucking route will use an entrance off East Paterson Street. Workers have been instructed to be especially aware and cautious.



## Next Steps

Over the next few years, additional cleanup work will take place in Area 1 (see map below). Locations of this work are highlighted in the map below. Cleanup designs are in progress and are anticipated to be completed in early 2022 with work extending through 2024 for the areas downstream of East Michigan Avenue. Upstream of East Michigan Avenue will be addressed following completion of downstream areas.

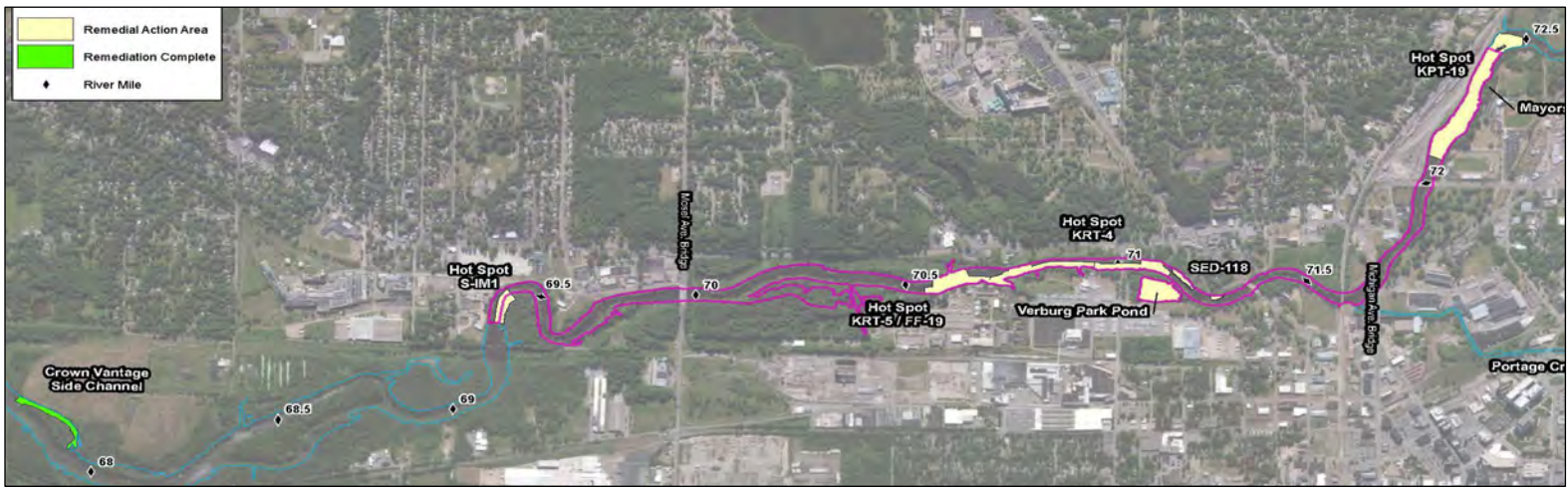
## Cleanup History and Progress

In 1977, the Michigan Department of Natural Resources issued a public health advisory regarding PCB

contamination at the site and advised residents not to eat fish caught from the river.

In August 1990, the Kalamazoo River, as part of the Allied Paper/Portage Creek/Kalamazoo River Superfund site, was placed on the National Priorities List, a roster of the nation's most hazardous waste sites.

Since 1998, EPA-lead, response actions have removed nearly 470,000 cubic yards of contaminated material from the site, cleaned up and restored 12 miles of the Kalamazoo River and Portage Creek (including banks), and capped 82 acres of contaminated material. Most recently in 2021, remediation in Area 1 was completed at the Crown Vantage Side Channel where 11,199 cubic yards of contaminated sediment were removed.



Overview of Area 1 Cleanup Areas in the Kalamazoo River

# ALLIED PAPER/PORTAGE CREEK/KALAMAZOO RIVER SITE: Work Begins at Verburg Park, Park and Trail Closures

Reproduced on Recycled Paper

Place Postage  
Here

Community Information Office  
1300 Bluff St., Suite 140  
Flint, MI 48504

United States  
Environmental Protection  
Agency

