

September 28, 2019

Michael Mikaitis  
Aldridge Electric  
844 E. Rockland Rd.  
Libertyville, Illinois 60048

RE: 400-479 N. McClurg Ct. Thorium Monitoring  
CDOT Permit: 1105963

Dear Mr. Mikaitis:

Stan A. Huber Consultants, Inc (SAHCI) was hired by your firm to provide radiation monitoring during the excavation for installation of an electric conduit at 400 – 479 N. McClurg Court in Chicago, Illinois. The monitoring was performed by Aaron Morris, Health Physicist (RSSI), on September 19, 2019.

#### Instrumentation

Surface gamma scans were performed using a Ludlum Model 2221 Scaler / Ratemeter (serial no. 126497) with attached Ludlum Model 44-10 2"x2" NaI Detector (w/ 6" collimated lead shield). The instrument was calibrated on October 15, 2018. The US Environmental Protection Agency (USEPA) action level of 7.1 picocuries per gram (pCi/g) total thorium for this instrument is 6,319 counts per minute (cpm).

The average background count rate for this location was measured as 2,304 cpm.

#### Soil Gamma Scans

Gamma surface scans were performed using the Ludlum Model 2221 Scaler / Ratemeter described above. Survey data was collected by entering the excavation after removal of the existing decorative tile, asphalt, and concrete and recording the highest count rate at a maximum excavation depth of less than 18 inches below ground surface. No fill material was removed, only the existing top layers above the fill. All excavated material was loaded directly into a truck for disposal.

The maximum gamma count rate for each lift was recorded on the attached Radiation Survey Form. The count rates in the excavation ranged from 1,600 cpm to 2,200 cpm. No count rates were found at any time that exceeded the threshold limit of 6,319 cpm.

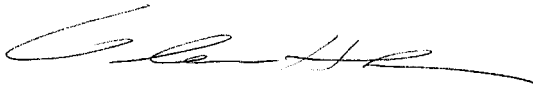
Additional Monitoring

Since no count rates were identified above the 7.1 pCi/gram threshold limit, no additional soil sampling, air monitoring, or personnel monitoring were performed.

I will be providing a copy of this report to both the City of Chicago Department of Public Health and US Environmental Protection Agency, as required.

Thank you for your assistance with this project. If you have any questions or need additional information, please call me at (815) 485-6161.

Sincerely,  
Stan A. Huber Consultants, Inc.

A handwritten signature in black ink, appearing to read 'Glenn Huber', written in a cursive style.

Glenn Huber, CHP  
President

## Radiation Survey Form

**Location/ Project ID:** Aldridge Electric 401-480 N. McClurg Ct. (CDOT#1105963)

**Date:** 9/19/19

**Technician:** Aaron Morris (RSSI)

**Inst Model:** Ludlum 2221

**Serial No.:** 126497

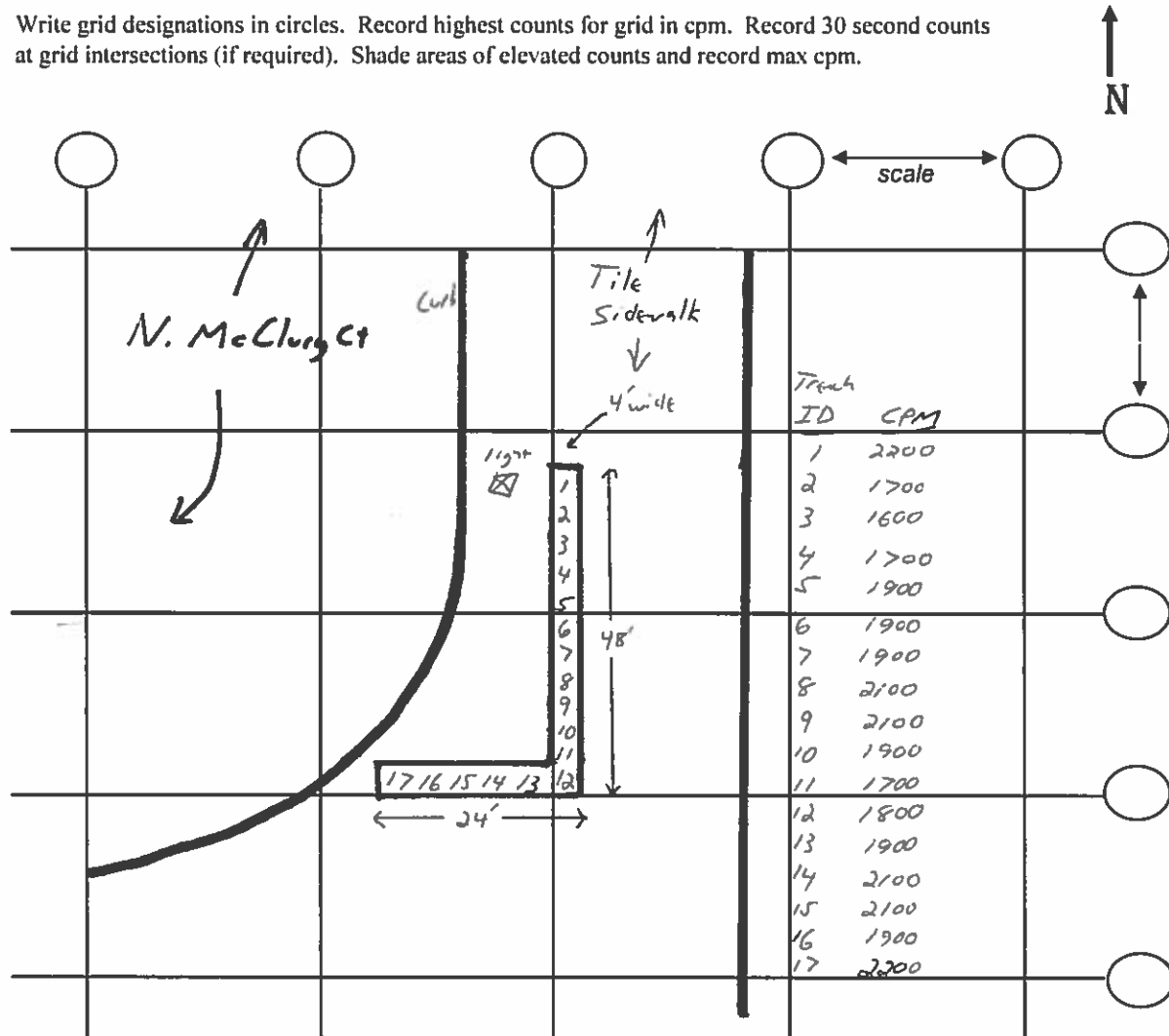
**Probe Type:** 1"x1" NaI / 2"x2" NaI  
Shielded / Not Shielded

**Lift Elevation:** surface to -18"

**Background** 2,304 **cpm**

**Action Level:** 6,319 **cpm**

Write grid designations in circles. Record highest counts for grid in cpm. Record 30 second counts at grid intersections (if required). Shade areas of elevated counts and record max cpm.

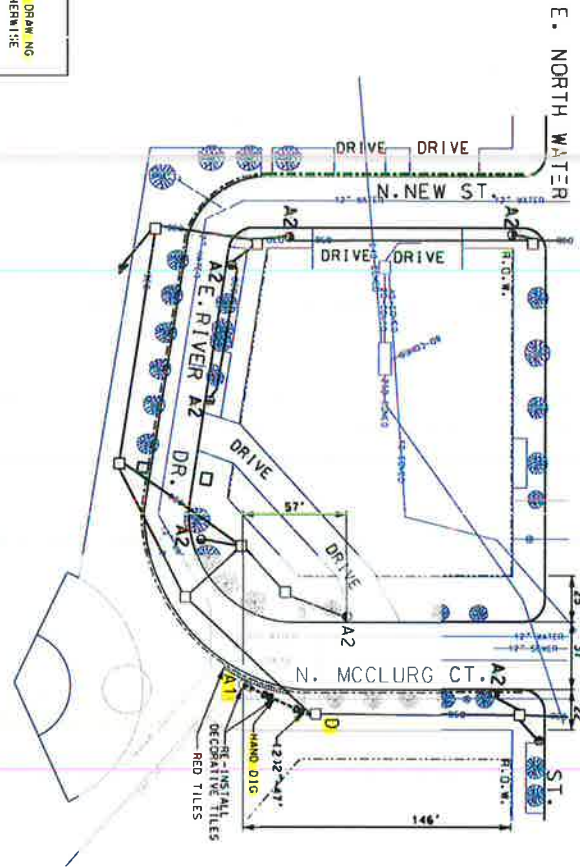


CONTRACTOR / BID TO CONTACT D.I.G.G.E.U.R @ 312-744-7000  
 ALL UTILITY COMPANIES TO LOCATE EXISTING UNDERGROUND  
 UTILITY LINES PRIOR TO COMMENCEMENT OF WORK.

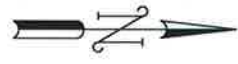
CITY CONSTRUCTION DEPARTMENT OR ITS  
 CONTRACTOR MUST COORDINATE THE LIGHTING  
 SPACING WITH CODES BY CALLING THEIR ACCOUNT  
 MANAGER @ 312-324-4343

CONDUIT TO BE INSTALLED USING DIRECTIONAL  
 BORING METHOD. UNLESS OTHERWISE NOTED.

ALL CONCRETE SIDEWALKS, ADA RAMPS AND DECORATIVE  
 TILES MUST BE RESTORED TO ITS ORIGINAL CONDITION



- NOTES:**
- \*A1\* - INSTALL 15" B.C. X 7' HELIX FOUNDATION AS PER DRAWING NO. 936, 6' OFF FACE OF CURB, UNLESS NOTED OTHERWISE
  - \*A2\* - EXISTING 16" B.C. LIGHT POLE FOUNDATION
  - \*D\* - DRILL INTO & CLEAN EXISTING HANDHOLE/RANHOLE
  - ☒ - REMOVE AND REPLACE PAVEMENT
  - ☒ - REMOVE FOR BORING PLS



ATLAS# 0-21 & R-21

STAFF/NAME	DOCS CONDO DISTRIBUTION NAME
DATE	NEWTON
JOB SHEET NO.	118842250
CITY ALLOCATION ACCOUNT	
APPROPRIATION ACCOUNT	WATER
ARTERIAL STREET LIGHTING	
UNDERGROUND CONDUIT FACILITIES	
E. RIVER DR.	
N. MCCLURG CT. TO N. NEW ST.	
CITY OF CHICAGO	
DEPARTMENT OF TRANSPORTATION	
DIVISION OF ENGINEERING	
DESIGNER	M. SCARITA
COR. ENGINEER	M. RASHED
PROFESSIONAL ENGINEER	M. RASHED
EXAMINER OF ELECTRICALITY	
PROJECT COMPLETION	
DATE: 2/27/2018	SCALE: 1" = 30'
18-349	

Survey under sidewalk at 400 N. McClurg Ct. on September 19, 2019

Overall site, looking northeast

