

Otsego Township Dam Removal and PCB Time Critical Removal Action



Mark Mills
Southwest Field Operations Manager



Dam Construction – around 1900



Dam Construction – around 1900



Dam Construction – around 1900



Dam Construction – around 1900



Dam Conditions



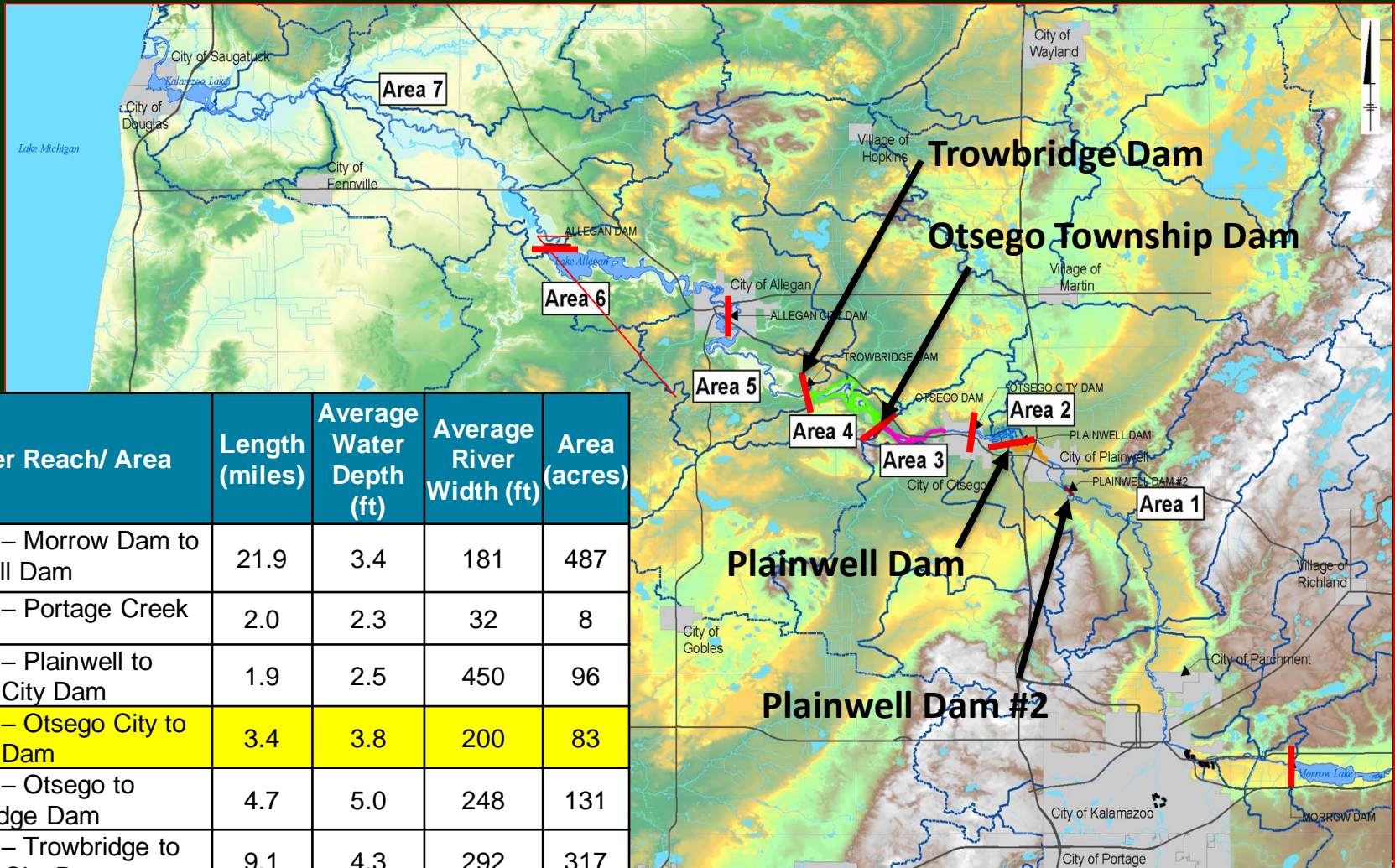
Dam Conditions



Dam Conditions



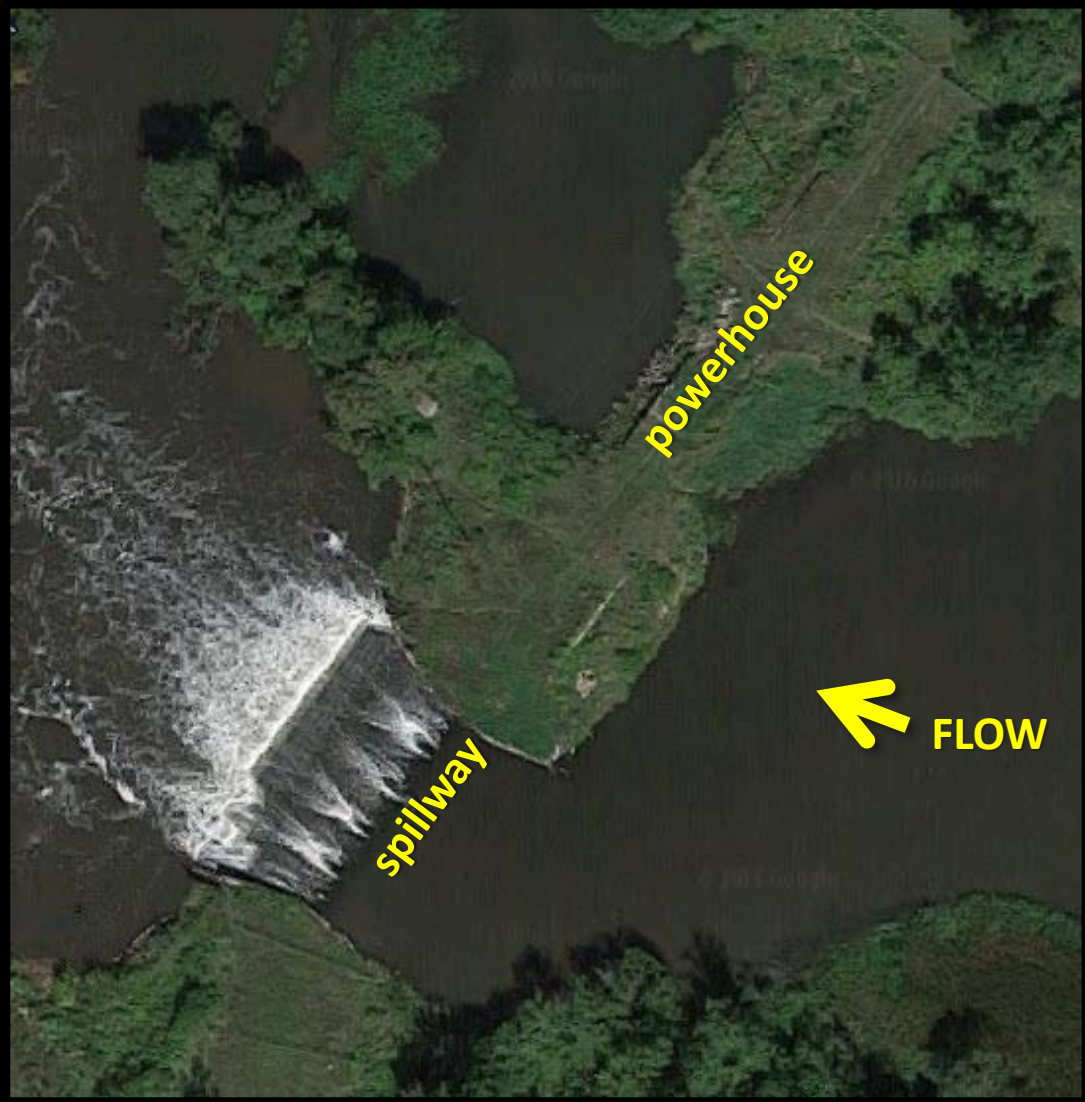
Operable Unit 5 (Kalamazoo River & Portage Creek)



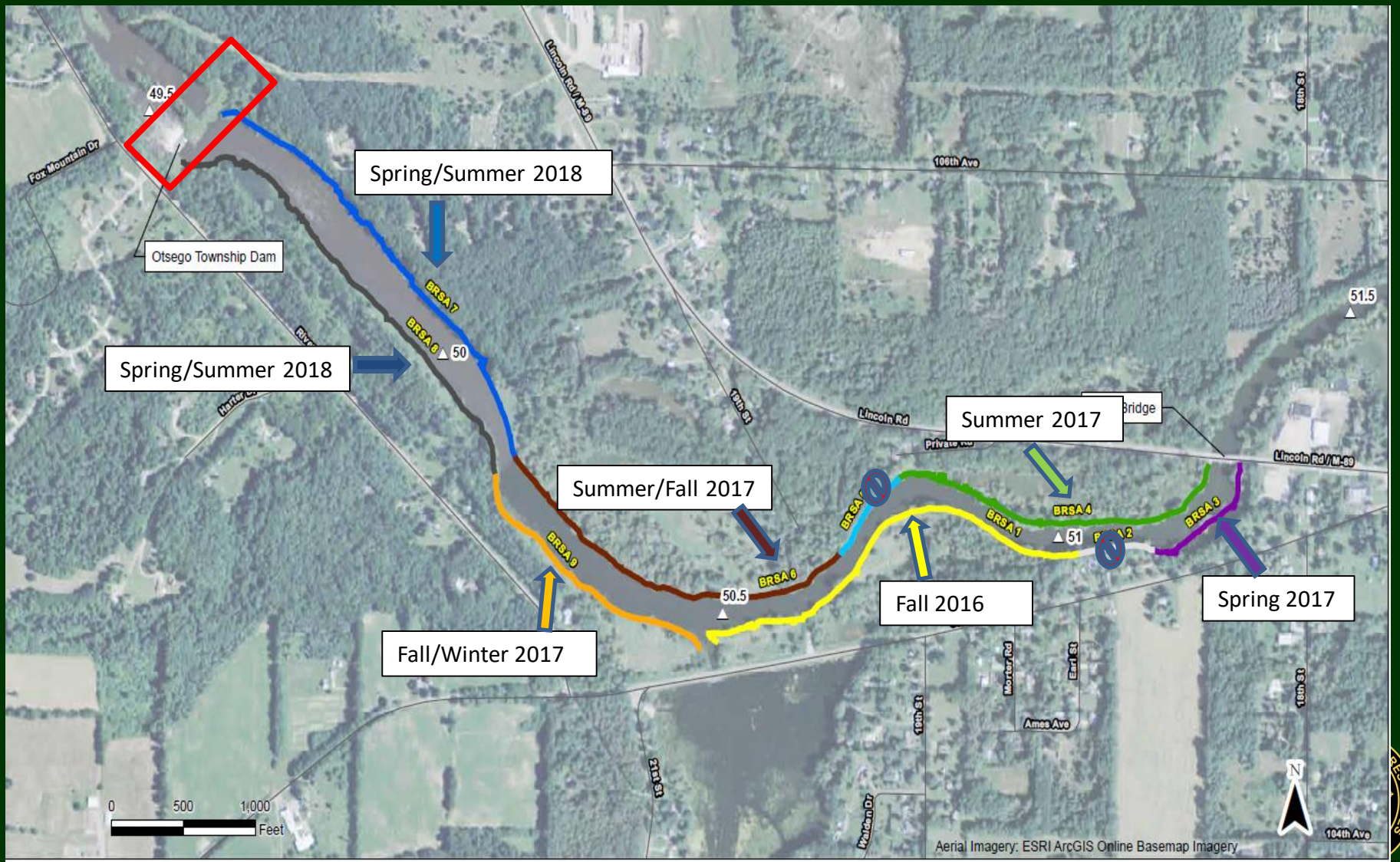
River Reach/ Area	Length (miles)	Average Water Depth (ft)	Average River Width (ft)	Area (acres)
Area 1 – Morrow Dam to Plainwell Dam	21.9	3.4	181	487
Area 1 – Portage Creek	2.0	2.3	32	8
Area 2 – Plainwell to Otsego City Dam	1.9	2.5	450	96
Area 3 – Otsego City to Otsego Dam	3.4	3.8	200	83
Area 4 – Otsego to Trowbridge Dam	4.7	5.0	248	131
Area 5 – Trowbridge to Allegan City Dam	9.1	4.3	292	317
Area 6 – Lake Allegan	9.8	6.7	1,500	1,650
Area 7 – Allegan Dam to Lake Michigan	26	5.5	212	670



Otsego Township Dam ~2015







ALLEGAN STATE GAME AREA Kalamazoo River Bottomlands Unit portion

Allegan County, Otsego Township,
in T01N R12W sections 17, 20, 21 and 22

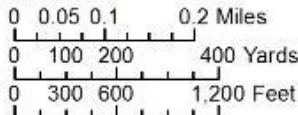


Legend

- Otsego Dam closure area
- Staging locations
- Roads in boundary definition
- State Land
- PLSS Town-Range Section Lines
- PLSS T-R Section Quarter-Quarter Lines

(Note: linework elements have a partial transparency over base.)

Backdrop is base NatGeo detailed base data.



Content may not reflect National Geographic's current map policy. Sources: National Geographic, Esri, DeLorme, HERE, UNEP-WCMC, USGS, NASA, ESA, METI, NRCAN, GEBCO, NOAA, increment P Corp. (DNR Wildlife Division map rev. 2016 July 08 -WLD/MS)



Fall 2016



Staging Area Operations



Loadout of Non-TSCA (<50ppm)



Water Treatment Plant



TSCA (> 50ppm) shipping


Fall 2016



Threatened Mussel relocation before work started (in consultation with DNR Fisheries)



Excavation



Sheet pile coffer dam
installation for in-stream
sediments



Excavation 'grids' are
approximately 50' long

BRSA 4



'Stream Tubes'
where in-
stream
sediments
must be
removed until
< 1 ppm total
PCBs

Water is
pumped out
prior to
excavation

Restoration



Root Wad Placement



Restoration



Temporary Water Control Structure





Temporary Water Control Structure (removal)



Temporary Water Control Structure (removal)





**Auxiliary Spillway
Demolition
GLRI Grant**





Next Steps:

- Ribbon Cutting and press release to allow public to re-enter the area
 - Thursday, August 30 @ 1pm
- Complete removal designs for Trowbridge Dam
 - completed this winter
 - Begin removal process during summer 2019





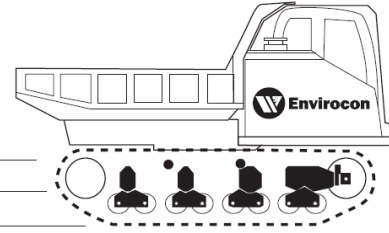
**TEAM
OTSEGO**

2018



Otsego Township Dam Area Time Critical Removal Action

**TEAM
OTSEGO**
2018



Help us make
this jobsite a
Perfect
1 TEAM
0 ACCIDENTS



TEAM APPROACH

- Joint Planning
(State/Feds/PRPs)
- Cooperative Approach
- Group Accountability



Thank You

