



# Frequently Asked Questions McLouth Steel Cleanup

The U.S. Environmental Protection Agency and the Michigan Department of Environmental Quality have answers to questions you may have about the McLouth Steel settlement agreement and upcoming work. These FAQs will be updated as needed. This version was created September 12, 2018.

## Cleanup

### 1. *Why is the property split into northern and southern portions?*

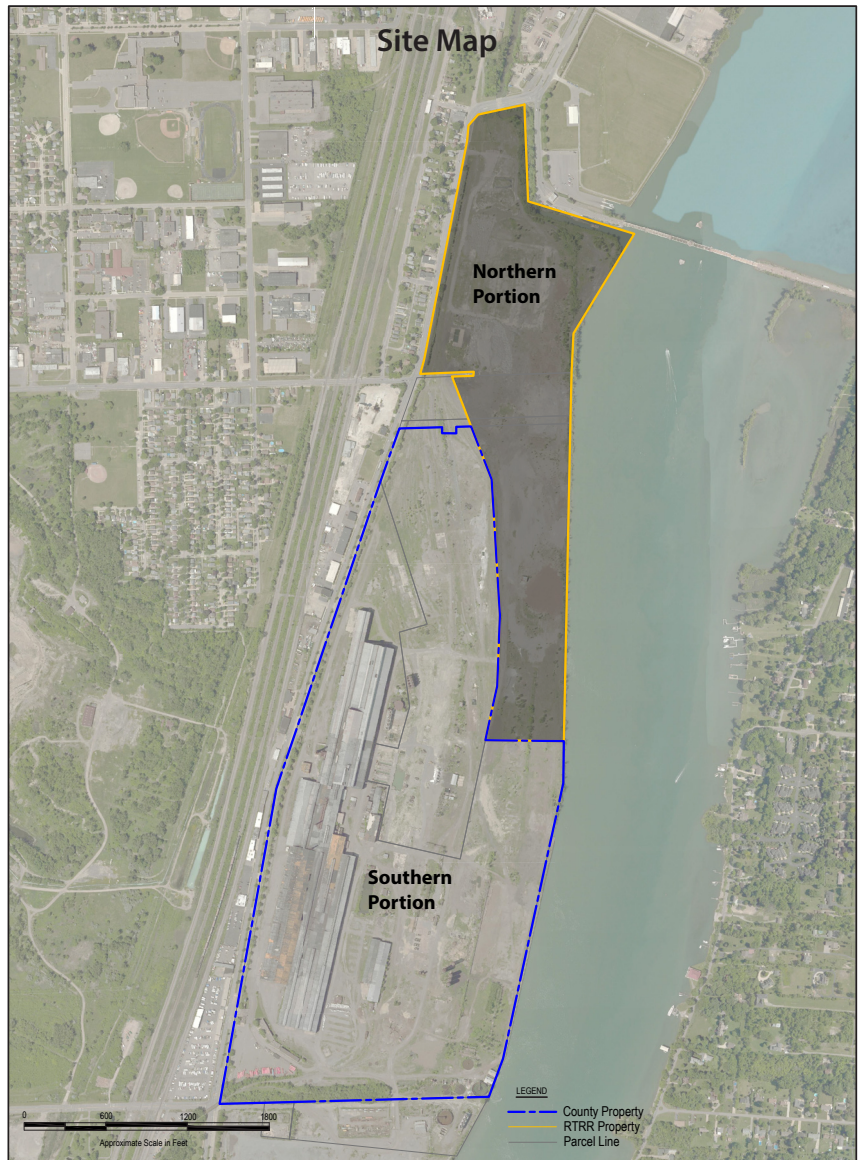
The property is split because those areas of the former McLouth Steel facility are owned by different entities. Those entities are subject to different environmental laws.

### 2. *Who will be involved in cleaning the property (both northern and southern portions)?*

The MSC Land Co. LLC will clean areas in the southern portions while the Riverview-Trenton Railroad Co., or RTRR, cleans areas in the northern portion. The southern portion will be cleaned up through a mix of private and public funds. Some work will begin almost immediately. Other work will occur over the next few years. EPA and MDEQ will ensure the cleanups are done properly and redevelopment is done safely. For more information, see the fact sheet.

### 3. *What is the contamination and where is it located? Is contamination going off the property into the river and surrounding areas?*

Contamination identified during previous work in the northern and southern portions include PCBs and heavy metals. We want to prevent these contaminants from getting into the environment through soil, air, and water. As work moves forward, more information will be gathered to understand locations of contamination better and stop any possible movement from the area.



### 4. *How will you make sure contamination does not spread during cleanup work?*

MSC will submit a dust management plan to EPA to prevent contaminants moving during southern portion work. MSC will also be subject to the Clean Water Act and has agreed to perform an assessment to determine how to comply with the act.

### 5. *What will be done to clean up the old oil settling ponds on the southern portion and remove associated ground contamination?*

One of the settling ponds called WMU: 1 (Sedimentation Basin) is one of the items specifically included in the work to be conducted by MSC. Groundwater will be investigated and cleaned up as part of EPA's work under Superfund.

### 6. *Will the areas be cleaned up where transformers were stored and possibly contaminated the soil with PCBs?*

Yes. The settlement agreement requires MSC to investigate five areas for PCBs; any PCBs within structures will be cleaned up by MSC. PCB areas discovered during redevelopment or during EPA's investigation will be handled either by MSC as part of the redevelopment or by a future cleanup plan under EPA's Superfund program.

**7. Will truck traffic increase during cleanup work? What routes will the trucks use?**

Truck traffic is likely to increase during the demolition, cleanup and redevelopment. The settlement agreement requires MSC to consult with officials from the cities of Riverview and Trenton on traffic management, then submit plans to EPA and MDEQ for approval.

**8. Will local ordinances, like traffic and noise, be followed during the work? Will traffic change after the cleanup?**

Local ordinances will be followed for the northern and southern portions of the former facility. Traffic patterns may change after the cleanup depending upon end use.

**9. Will dust be controlled during the demolition of buildings and resulting traffic from trucks and equipment?**

Yes. The settlement agreement and the corrective action consent order, or CACO, have requirements to submit dust control work plans to EPA and MDEQ before starting the cleanup.

**10. What will happen to the contaminated material and soil taken from the property?**

Any hazardous waste removed from the properties will go to a licensed disposal facility approved by the agencies.

**11. If work is not completed as agreed to in the settlement, will there be penalties or enforcement actions imposed? Who will monitor the work?**

The settlement agreement provides liability protections for MSC and Crown for the southern portion of the property. If they fail to perform what is required, they will lose the liability protections and may become liable for all environmental contamination. For the northern portion, the CACO has penalties and enforcement can be taken for failure to perform. MDEQ will oversee activities at the northern portion and some at the southern portion.

## Timing

**12. When will EPA start cleanup of the southern portion?**

EPA expects to propose the southern portion to the National Priorities List, or NPL, in September 2018. Once added, the southern portion becomes eligible for federal funds for investigation and cleanup. This process can take time and it may be several years before work begins under the program. (See timeline on Page 3.)



**13. When will MDEQ start cleanup of the northern portion?**

A work plan is due within 90 days after the CACO is signed by both RTRR and MDEQ. The plan will describe steps RTRR will take to investigate and begin cleanup activities.

**14. Will the buildings on the property be torn down by a certain date?**

Within two years, MSC will demolish approximately 45 buildings on the southern portion of the property. They will also take steps for site security, dust control, surface water runoff, removal of water and waste from subsurface structures, and will investigate PCBs.

**15. When will all the work be completed?**

This is just the start. The initial phase is to be conducted over the next two years. MSC will determine the pace of redevelopment. EPA Superfund cleanup will take many more years. The northern portion could also take a few years to complete since there is no deadline to complete the work defined in the CACO.

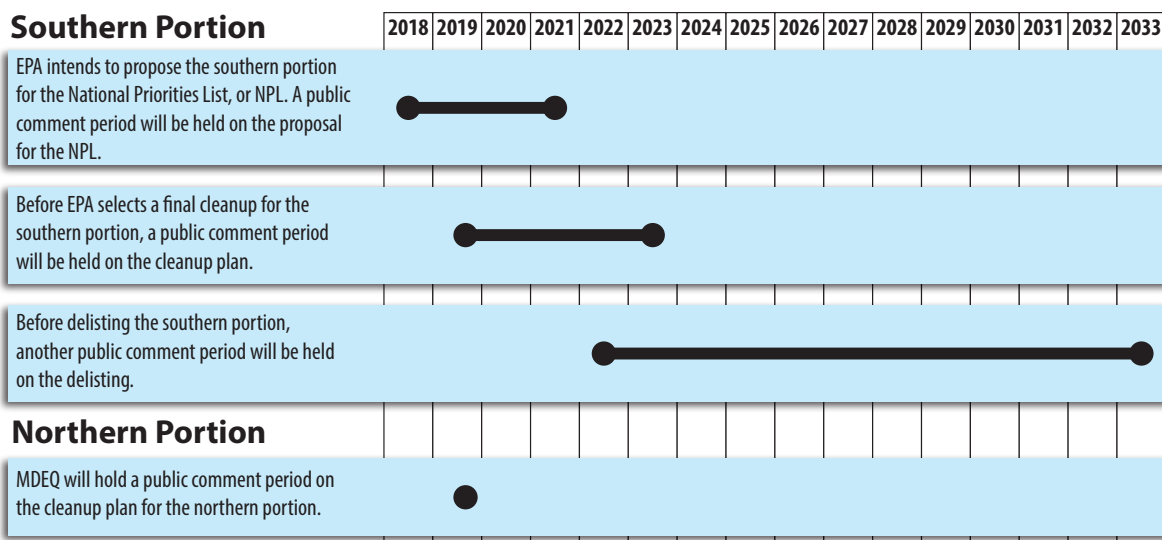
## Communication

**16. Will there be meetings held with the municipalities and/or residents to update the progress of the work? How will the community be involved?**

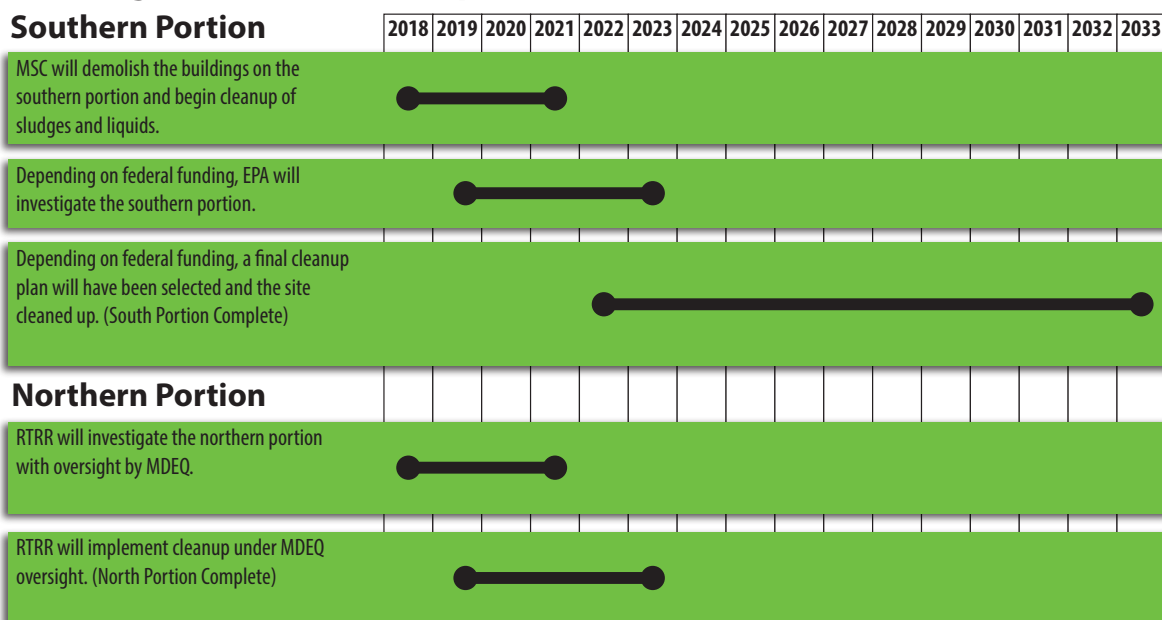
More meetings can be held as needed. In addition, if the southern portion of the property gets listed as a Superfund site, there will be other opportunities for public comment before work begins. The MDEQ will hold a public meeting and comment period when the work plan has been received from RTRR. EPA will work with MDEQ to create a community involvement plan. The plan will be developed by working closely with the community and identifying opportunities for public input.



## Community Engagement Opportunities



## Investigation and Cleanup Activities



### 17. How will municipalities be notified of any incidents or accidents during the demolition period? Will there be a phone number that residents can call with complaints and/or concerns?

A plan will be developed during work to make sure municipalities are notified if there is any incidents or accidents on the northern or southern portions of the property. Municipalities and community members will be provided information on how to contact the agencies if there are concerns during work.

## Restoration and Future use

### 18. What will eventually be done with the property?

MSC will work with the local municipalities, zoning boards and building departments to secure approval for redevelopment. As long as it is protective of human health and the environment, EPA and MDEQ do not have a role in deciding redevelopment.

### 19. Will there be restrictions on types of activities or materials on the property in the future?

The settlement agreement does not address what redevelopment will occur or how things will be zoned. It does include provisions on how redevelopment will occur and requirements for sampling and handling waste.

### 20. Will native habitat be restored on the property or along the river once cleanup is done?

Habitat restoration is not covered by this initial settlement agreement; however, EPA will notify the federal Natural Resources Trustees that work will be happening at the former McLouth facility. The Natural Resources Trustees are a group of agencies that focus on restoration projects related to the property.

## For more information

If you have questions or comments on the Former McLouth Steel facility, contact:

*For technical questions:*

**Brian Kelly**

EPA On-Scene Coordinator

kelly.brian@epa.gov

734-692-7684

**Rich Conforti**

MDEQ Project Manager

confortir@michigan.gov

517-284-6558

*For general questions:*

**Kirstin Safakas**

EPA Community

Involvement Coordinator

safakas.kirstin@epa.gov

312-886-6015

**Diane Russell**

EPA Community

Involvement Coordinator

russell.diane@epa.gov

989-395-3493

## Website

[www.epa.gov/superfund/mclouth-steel](http://www.epa.gov/superfund/mclouth-steel)

