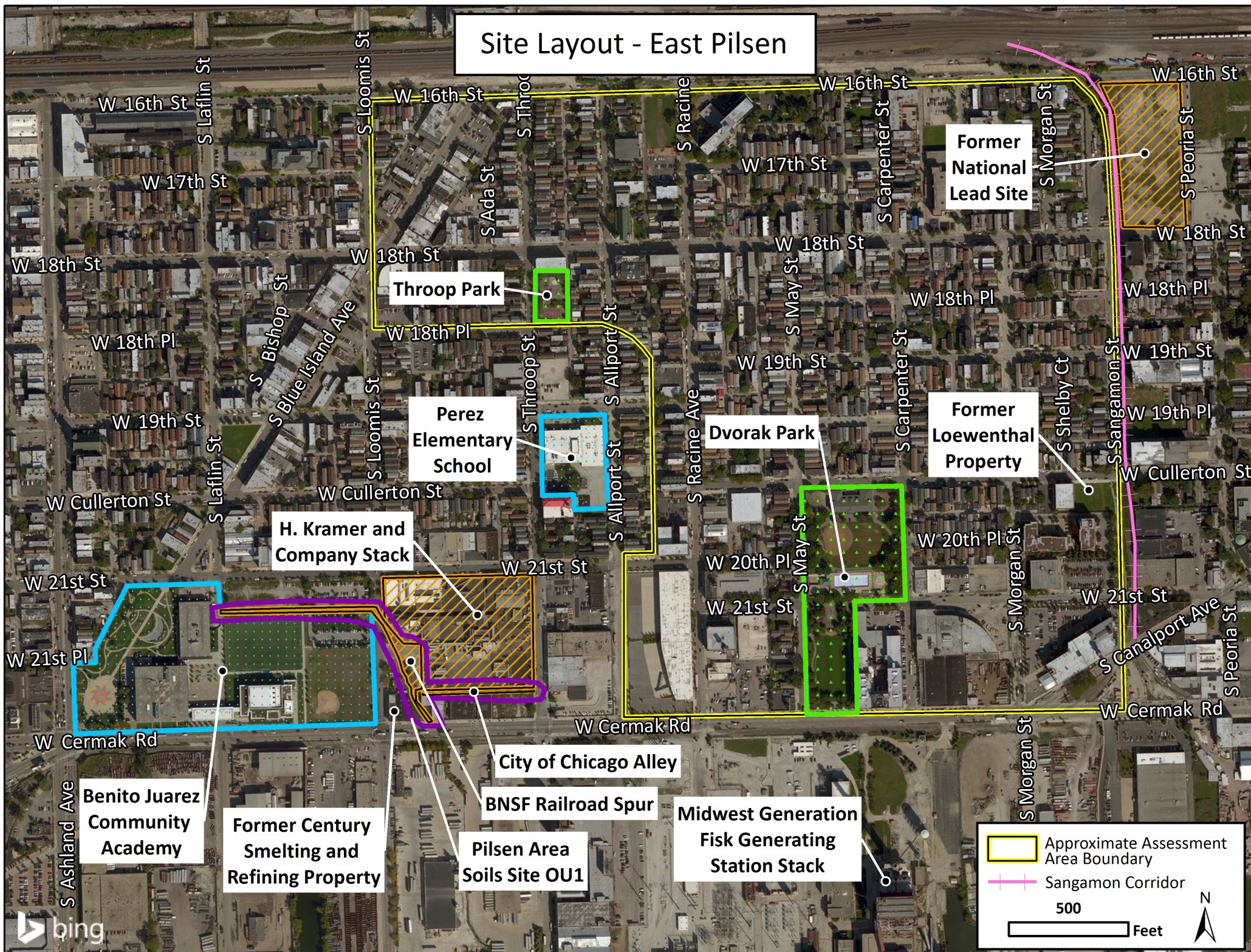


Site Layout - East Pilsen



Throop Park

Perez Elementary School

Dvorak Park

Former National Lead Site

Former Loewenthal Property

H. Kramer and Company Stack

Benito Juarez Community Academy


Former Century Smelting and Refining Property


City of Chicago Alley

BNSF Railroad Spur

Pilsen Area Soils Site OU1

Midwest Generation Fisk Generating Station Stack

 Approximate Assessment Area Boundary

 Sangamon Corridor

500 Feet

