



April 26, 2025

706875

Matthew Ziegler  
AT&T  
4533 W. Roscoe St.  
Chicago, Illinois 60641

RE: Thorium Monitoring – AT&T 106-139 E. Erie St.  
CDOT Permit: 2063043

Dear Mr. Ziegler:

Stan A. Huber Consultants, Inc (SAHCI) was hired by your firm to provide radiation monitoring during excavation for repair of an AT&T conduit located at 106-139 E. Erie St. in Chicago, Illinois. The excavation was performed by HEI Contractors and the monitoring was performed by Jeremy Kieser, SAHCI Health Physicist, on April 21, 2025.

#### Instrumentation

Surface gamma scans were performed using a Ludlum Model 2221 Scaler / Ratemeter (serial no. 127242) with attached Ludlum Model 44-10 2"x2" NaI Detector (w/ 6" collimated lead shield). The instrument was calibrated on May 7, 2024. The US Environmental Protection Agency (USEPA) action level of 7.1 picocuries per gram (pCi/g) total thorium for this instrument is 6,943 counts per minute (cpm).

The average background count rate for this location was 1,475 cpm.

#### Soil Gamma Scans

Gamma surface scans were performed using the Ludlum Model 2221 Scaler / Ratemeter described above. Survey data was collected by scanning the surface and walls of the two excavations to a depth of 54 inches below ground surface. Material excavated below 54 inches to a maximum depth of 108 inches was surveyed in the excavator bucket as it was removed. Excavated material was loaded directly into a truck for disposal.

The maximum gamma count rate for each 18-inch lift was recorded on the attached Radiation Survey Form. The count rates in the excavations ranged from 1,500 cpm to 1,700 cpm. No count rates were found at any time that exceeded the threshold limit of 6,943 cpm.

### Additional Monitoring

Since no count rates were identified above the 7.1 pCi/gram threshold limit, no additional soil sampling, air monitoring, or personnel monitoring were performed.

I will be providing a copy of this report to both the City of Chicago Department of Public Health and US Environmental Protection Agency, as required.

Thank you for your assistance with this project. If you have any questions or need additional information, please call me at (815) 485-6161.

Sincerely,  
Stan A. Huber Consultants, Inc.

A handwritten signature in black ink, appearing to read 'Glenn Huber', with a long horizontal flourish extending to the right.

Glenn Huber, CHP  
President

## Radiation Survey Form

Location/ Project ID: DOT 2063043

Date: April 21, 2025

Technician: Jeremy Krieser

Inst Model: 2221

Serial No. : 127242

Probe Type: 1"x1" NaI / 2"x2" NaI  
Shielded / Not Shielded

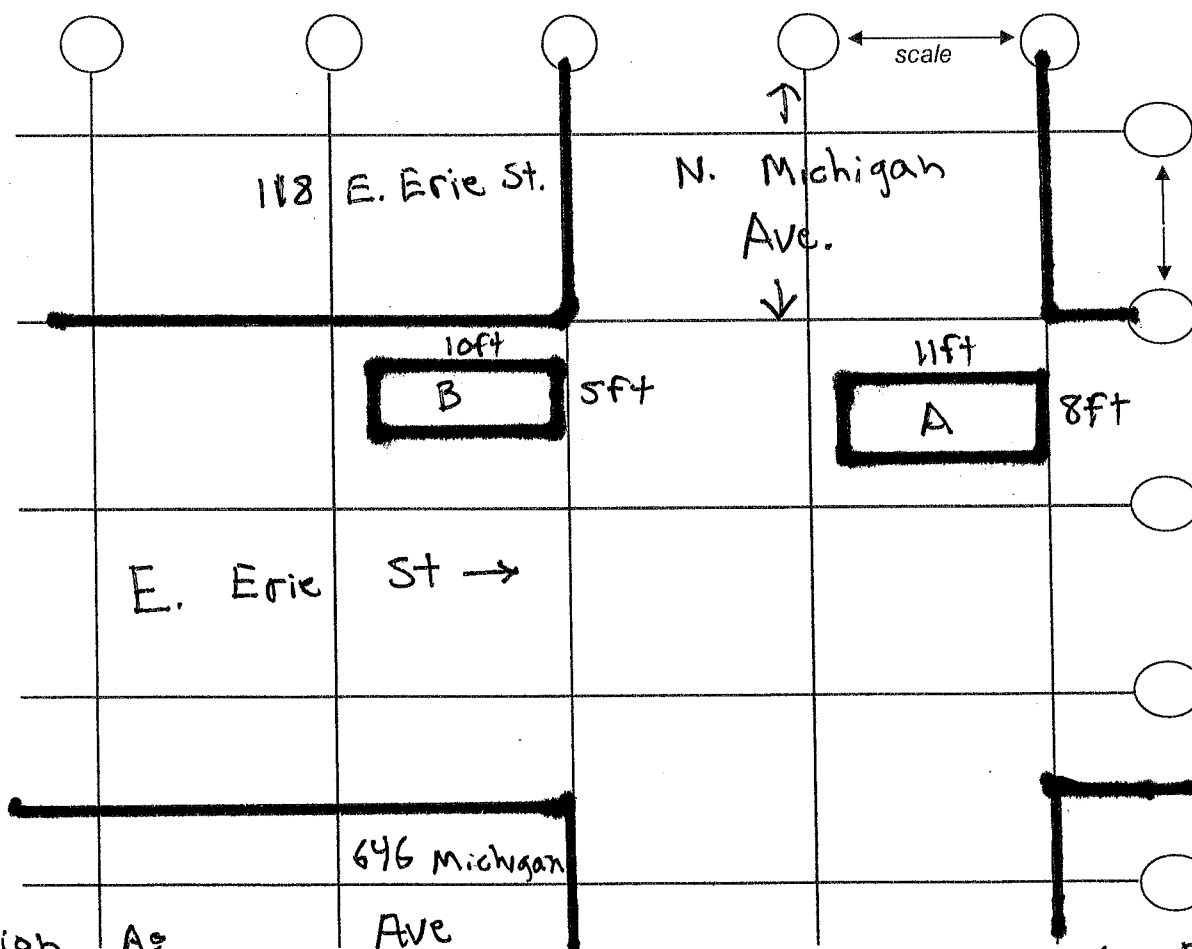
Lift Elevation: Surface to 9ft

Background 1475 cpm

Action Level: 6943 cpm

Write grid designations in circles. Record highest counts for grid in cpm. Record 30 second counts at grid intersections (if required). Shade areas of elevated counts and record max cpm.

↑  
N



Location

Ag

Ave

Surface & 1500 cpm

18 inches & 1600 cpm

36 inches & 1600 cpm

54 inches & 1600 cpm

72 inches & 1500 cpm

90 inches & 1500 cpm

108 inches & 1500 cpm

Location Bg

Surface & 1500 cpm

18 inches & 1700 cpm

36 inches & 1700 cpm

54 inches & 1600 cpm