



April 26, 2006

Mr. Matthew Ohl
United States Environmental Protection Agency
77 West Jackson Boulevard
HSRW-6J
Chicago, IL 60604-3590

Re: Drawings, Design Improvements for the Thin Barrier Curtain Wall
Enviro-Chem Superfund Site, Zionsville, Indiana

Dear Mr. Ohl:

ENVIRON International Corporation (ENVIRON), on behalf of the Enviro-Chem Trustees, is resubmitting the drawing attached to ENVIRON's letter dated April 24, 2006. The drawings attached to the April 24, 2006 letter were incorrectly labeled as Drawing 1, Drawing 2, and Drawing 3. The attached drawings (Drawing C-1, Drawing C-2, and Drawing C-4) will replace these drawings and the drawings in the Design Report¹ with the corresponding drawing numbers.

Please confirm that the changes are acceptable. If you have any questions regarding the requested changes, please do not hesitate to call me.

Sincerely,

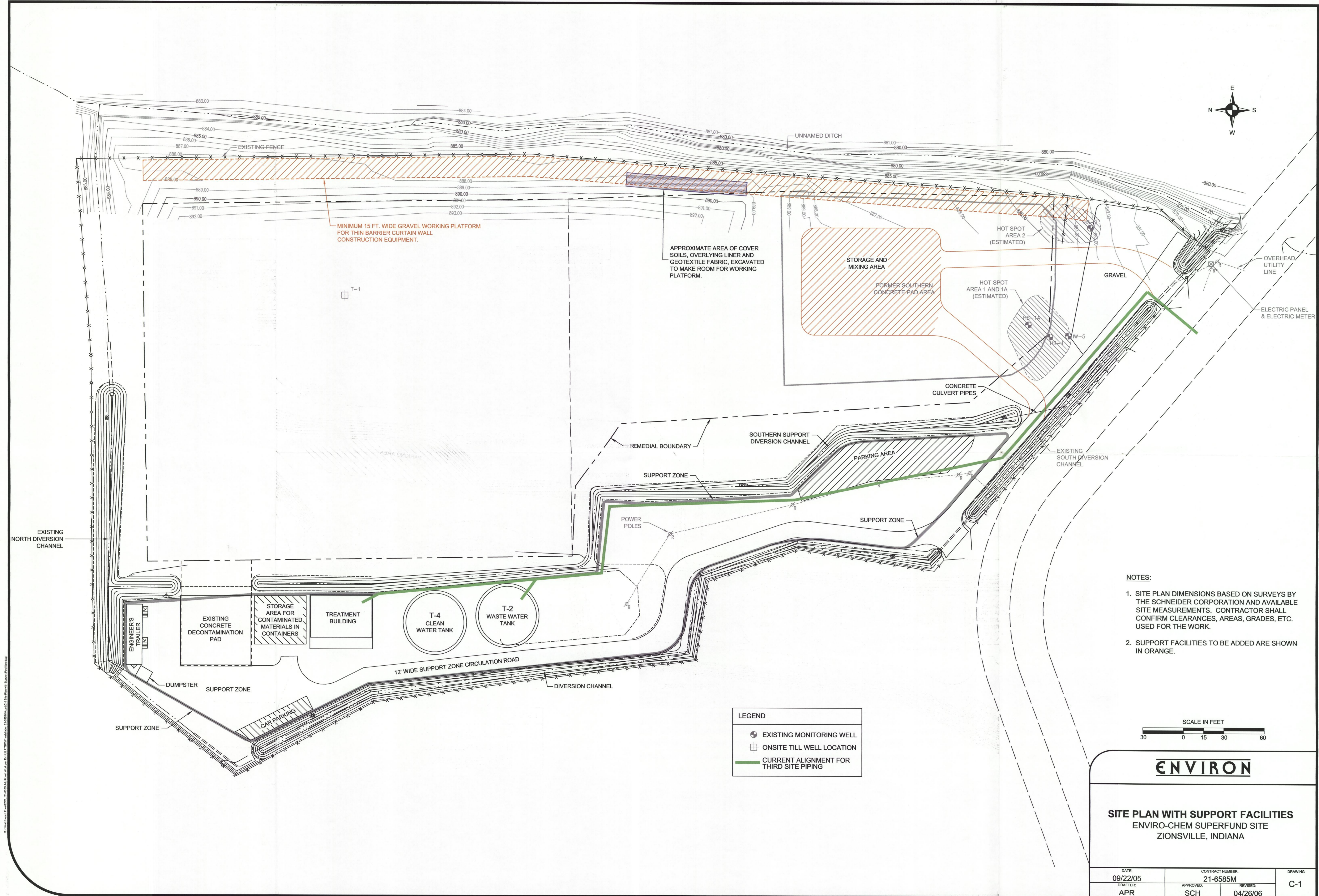
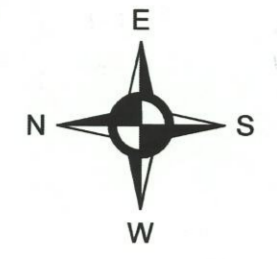
ENVIRON International Corporation

Scott Hayer, P.G.
Manager

Enclosure

- cc: Thomas Krueger, Esq. – USEPA
- Bruce Hamilton – IDEM
- Kevin Johnson – IDEM
- Timothy Harrison - CH2M HILL
- Philip Smith – CH2M HILL
- Norman W. Bernstein – Trustee
- Roy Ball – Trustee
- Dana Wesolek – Slurry Systems
- Raymond Kassab - Handex

¹ *Design Report for the Installation of the Thin Barrier Curtain Wall and the Till Water Pump Testing*, ENVIRON International Corporation, September 22, 2005.



MINIMUM 15 FT. WIDE GRAVEL WORKING PLATFORM FOR THIN BARRIER CURTAIN WALL CONSTRUCTION EQUIPMENT.

APPROXIMATE AREA OF COVER SOILS, OVERLYING LINER AND GEOTEXTILE FABRIC, EXCAVATED TO MAKE ROOM FOR WORKING PLATFORM.

STORAGE AND MIXING AREA

FORMER SOUTHERN CONCRETE PAD AREA

HOT SPOT AREA 2 (ESTIMATED)

HOT SPOT AREA 1 AND 1A (ESTIMATED)

GRAVEL

CONCRETE CULVERT PIPES

SOUTHERN SUPPORT DIVERSION CHANNEL

PARKING AREA

EXISTING SOUTH DIVERSION CHANNEL

REMEDIAL BOUNDARY

SUPPORT ZONE

SUPPORT ZONE

EXISTING NORTH DIVERSION CHANNEL

EXISTING CONCRETE DECONTAMINATION PAD

STORAGE AREA FOR CONTAMINATED MATERIALS IN CONTAINERS

TREATMENT BUILDING

T-4 CLEAN WATER TANK

T-2 WASTE WATER TANK

12' WIDE SUPPORT ZONE CIRCULATION ROAD

DUMPSTER

SUPPORT ZONE

CAR PARKING

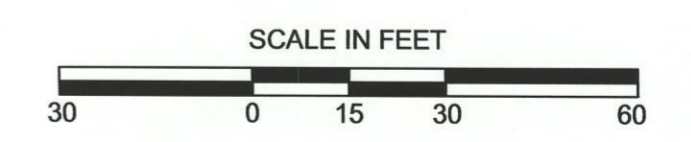
DIVERSION CHANNEL

LEGEND

- EXISTING MONITORING WELL
- ONSITE TILL WELL LOCATION
- CURRENT ALIGNMENT FOR THIRD SITE PIPING

NOTES:

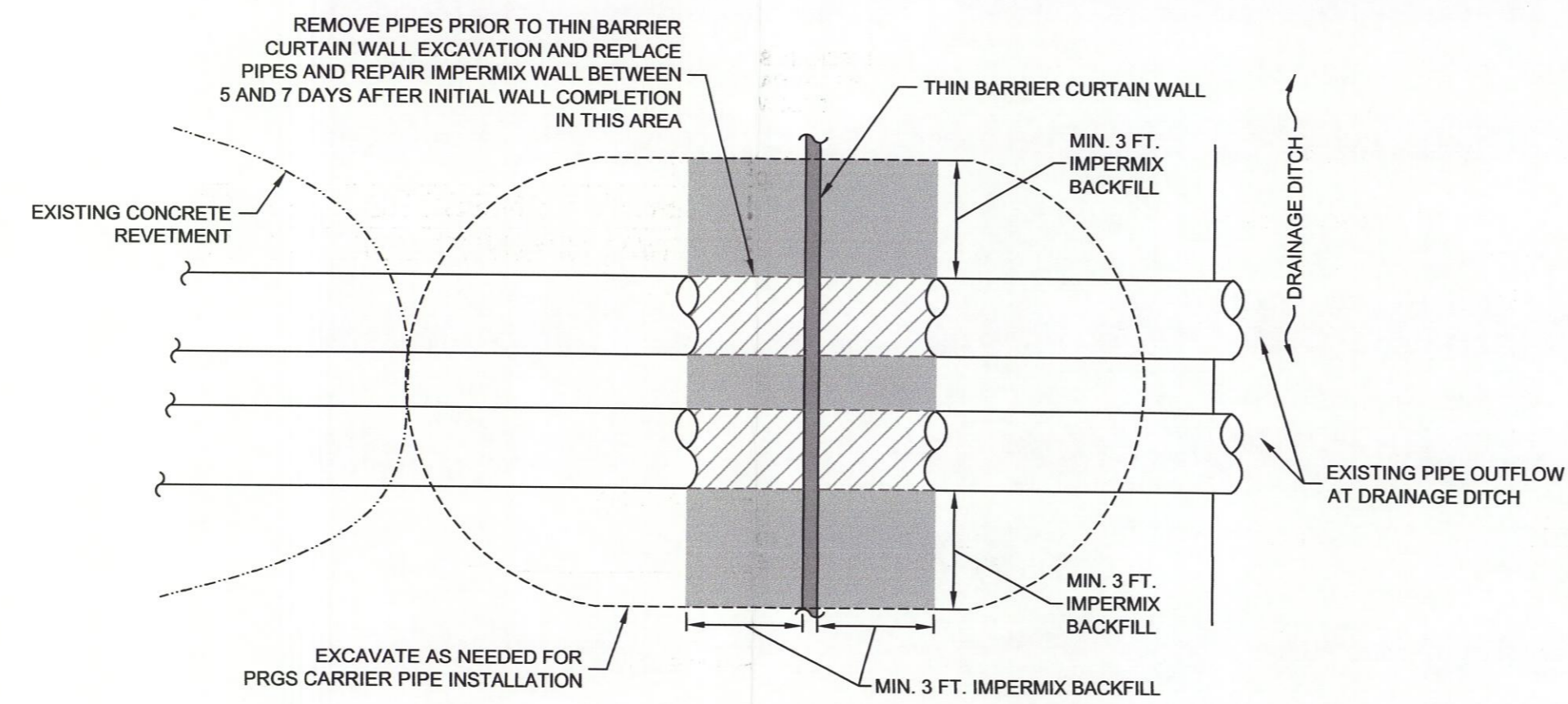
1. SITE PLAN DIMENSIONS BASED ON SURVEYS BY THE SCHNEIDER CORPORATION AND AVAILABLE SITE MEASUREMENTS. CONTRACTOR SHALL CONFIRM CLEARANCES, AREAS, GRADES, ETC. USED FOR THE WORK.
2. SUPPORT FACILITIES TO BE ADDED ARE SHOWN IN ORANGE.



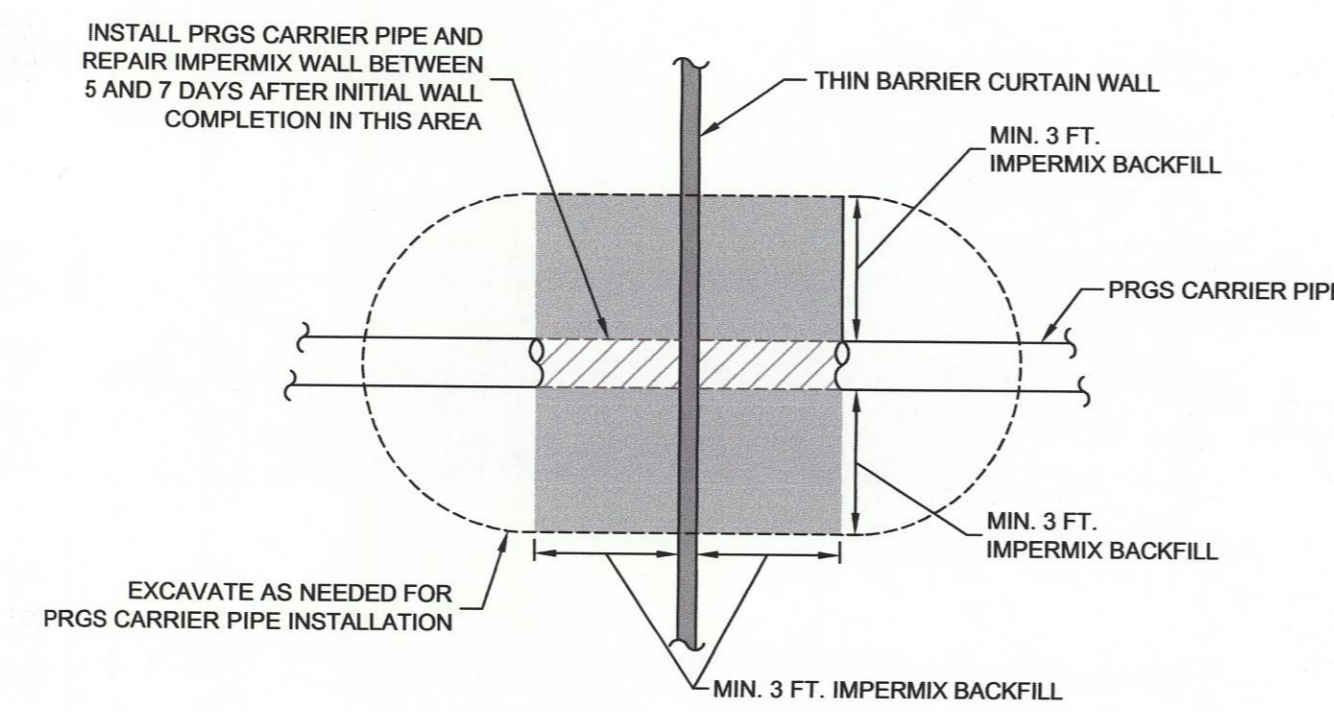
ENVIRON

SITE PLAN WITH SUPPORT FACILITIES
ENVIRO-CHEM SUPERFUND SITE
ZIONSVILLE, INDIANA

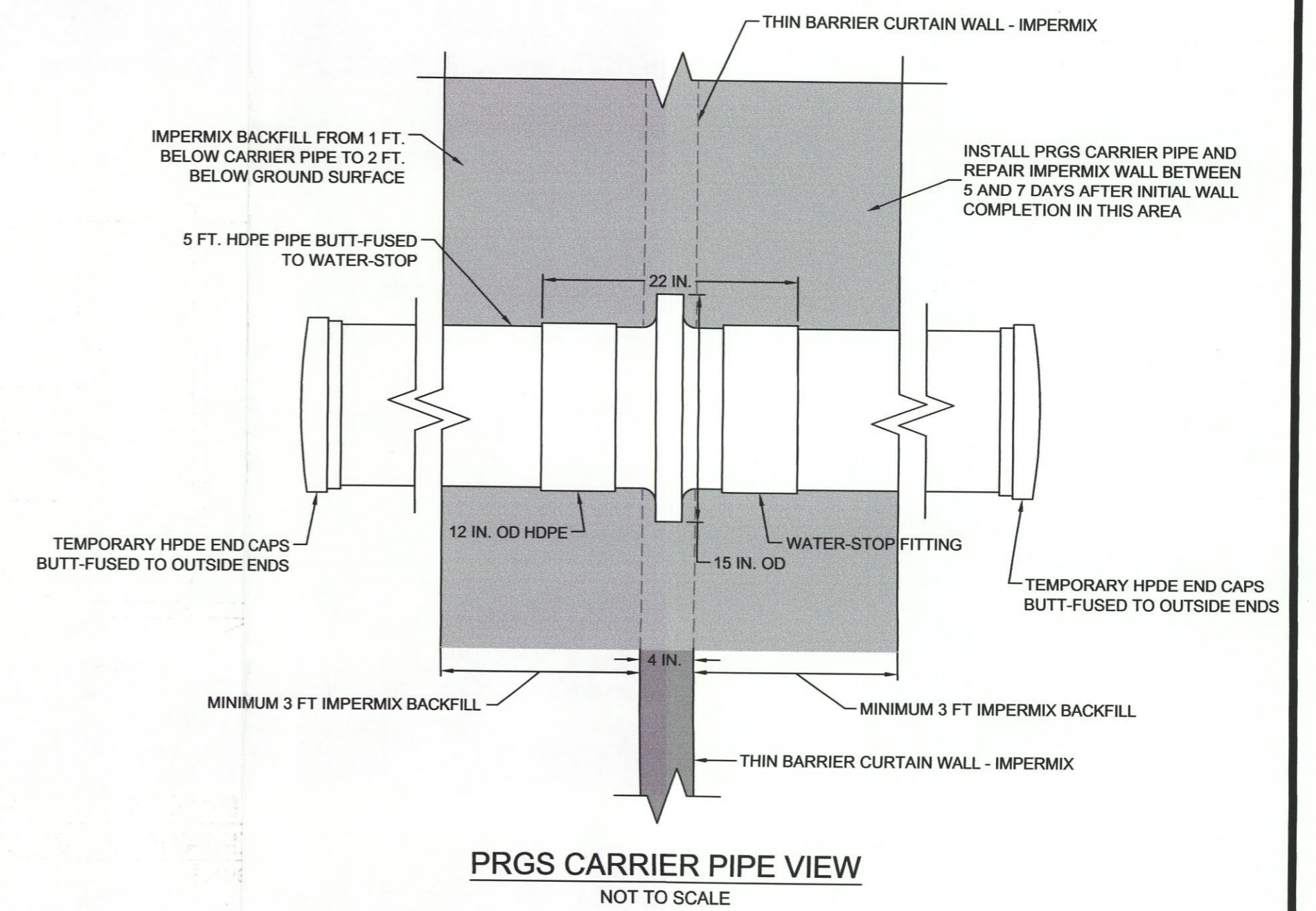
DATE: 09/22/05	CONTRACT NUMBER: 21-6585M	DRAWING:
DRAFTER: APR	APPROVED: SCH	REVISED: 04/26/06
		C-1



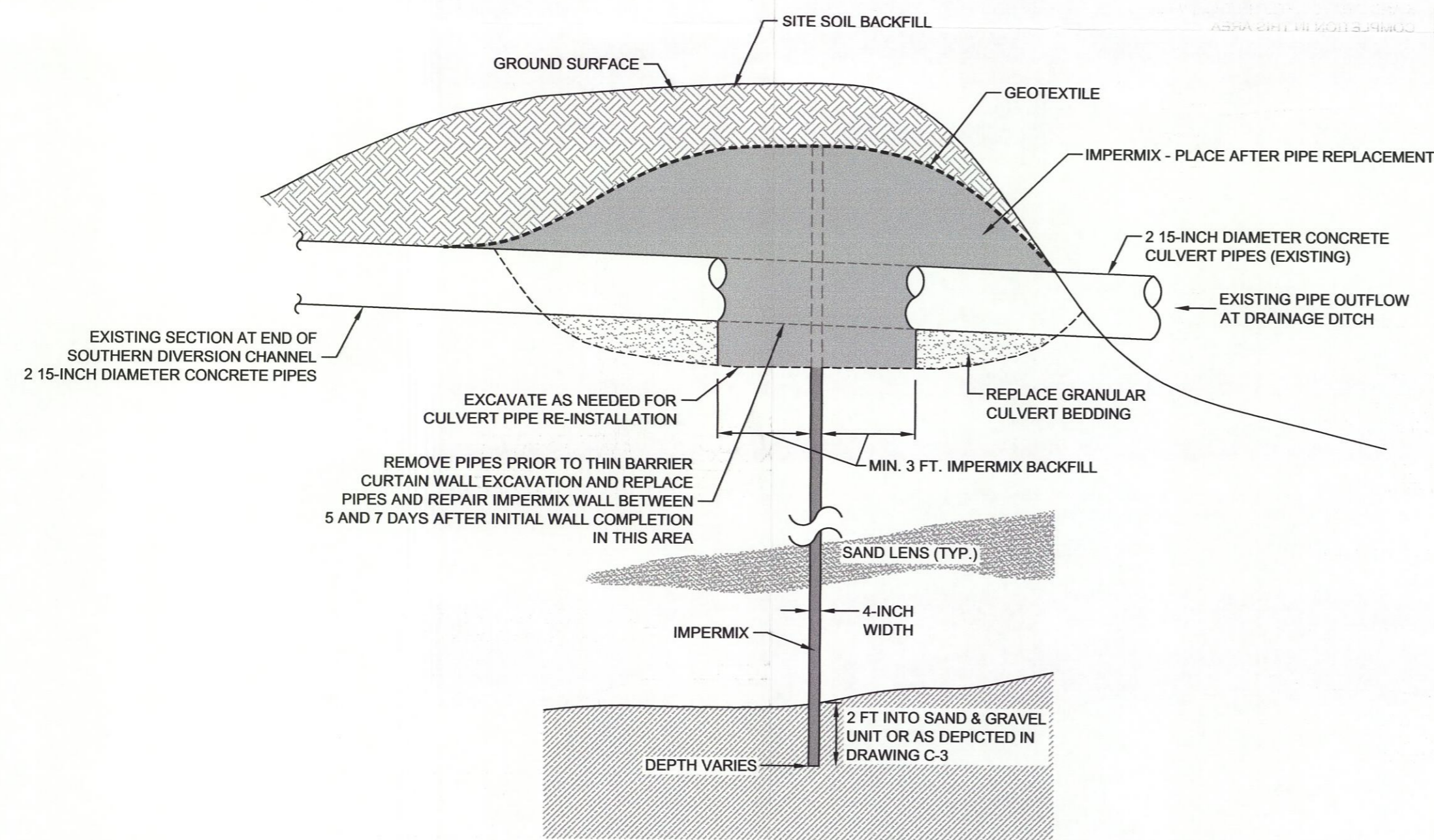
THIN BARRIER CURTAIN WALL AT DIVERSION CHANNEL CULVERT CROSSING - APPROXIMATE - PLAN VIEW
NOT TO SCALE



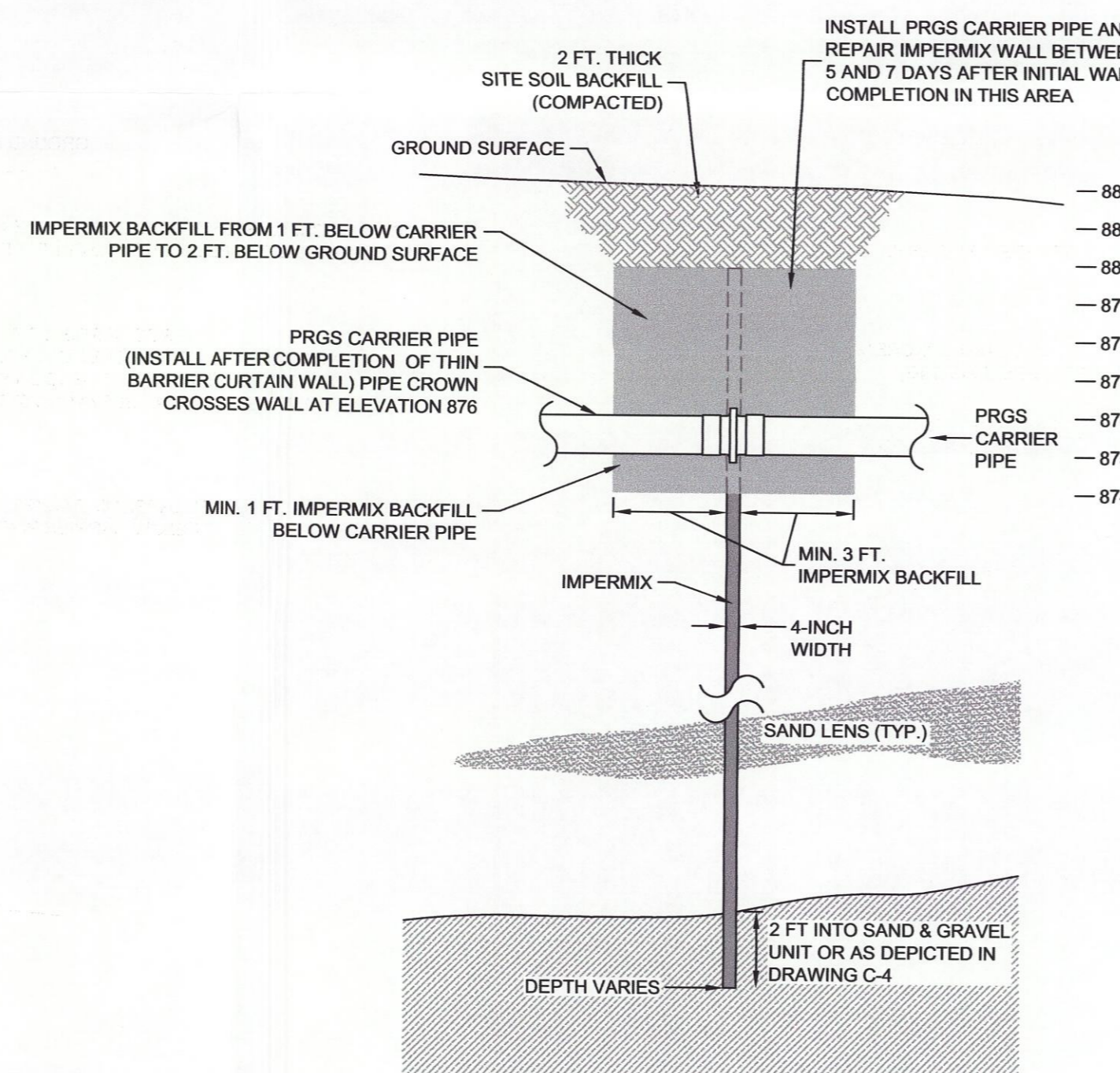
THIN BARRIER CURTAIN WALL AT PRGS PIPE CROSSING APPROXIMATE - PLAN VIEW
NOT TO SCALE



PRGS CARRIER PIPE VIEW
NOT TO SCALE



THIN BARRIER CURTAIN WALL SECTION AT DIVERSION CHANNEL CULVERT CROSSING - APPROXIMATE - MAY BE FIELD ADJUSTED
NOT TO SCALE



THIN BARRIER CURTAIN WALL SECTION AT PRGS PIPE CROSSING
NOT TO SCALE

ENVIRON

THIN BARRIER CURTAIN WALL CROSS SECTIONS
ENVIRO-CHEM SUPERFUND SITE
ZIONSVILLE, INDIANA

DATE: 09/22/05	CONTRACT NUMBER: 21-6585K	DRAWING: C-4
DRAFTER: APR	APPROVED: SCH	REVISION: 04/26/06