

Update on Sampling and Cleanup Activities

February 2021

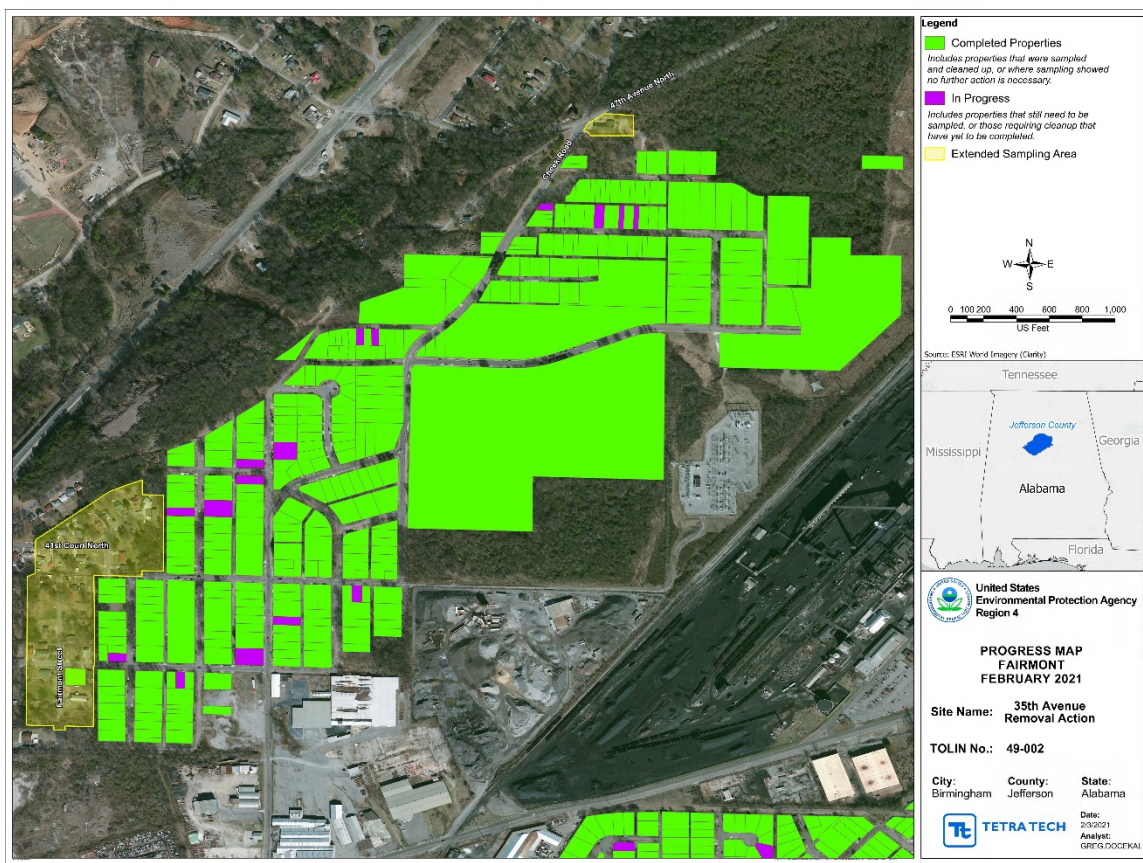
Fact Sheet 9

Sampling Activities – We Need Your Help

The U.S. Environmental Protection Agency has conducted sampling and cleanup activities at the 35th Avenue Site, which includes portions of the Collegeville, Fairmont and Harriman Park communities, since 2014 to address elevated levels of lead, arsenic and polyaromatic hydrocarbons (PAHs) in soil. The EPA is expanding sampling in the Fairmont community, to include the additional areas shown in yellow below, and we need your help.

The EPA is offering soil testing at **no cost**. If you are a property owner or tenant in the extended study area, EPA needs your permission to sample the surface soil on your property. Residents and property owners in the expanded area will receive access authorization forms by mail and are asked to sign and return them to EPA as soon as possible.

The access authorization forms are also available on EPA's website: www.epa.gov/superfund/35th-avenue. If you have questions about the access authorization form, please reach out to the EPA contacts listed at the end of this fact sheet.



Expanded study areas in the Fairmont neighborhood (in yellow)

Sampling

The soil samples (which will include a handful or two of soil from several locations per yard) will be taken outside, and residents/owners do not have to be present.

For your safety and the safety of EPA's staff and contractors, all sampling personnel will take measures to prevent the spread of Covid-19.

EPA will inform you of the results and discuss any cleanup that may be needed. The sampling and any associated cleanup that may be required will be done at **no cost** to residents or property owners.

If your property does not require remediation, or after your property has been cleaned up, you will receive a letter stating no further cleanup or Superfund response action is planned at your property.

What To Expect:

1

STEP 1:

The fact sheet and Access Authorizations are mailed to residents and property owners.



2

STEP 2:

Once EPA receives your signed Access Authorization, you will be contacted to schedule your sampling date.



3

STEP 3:

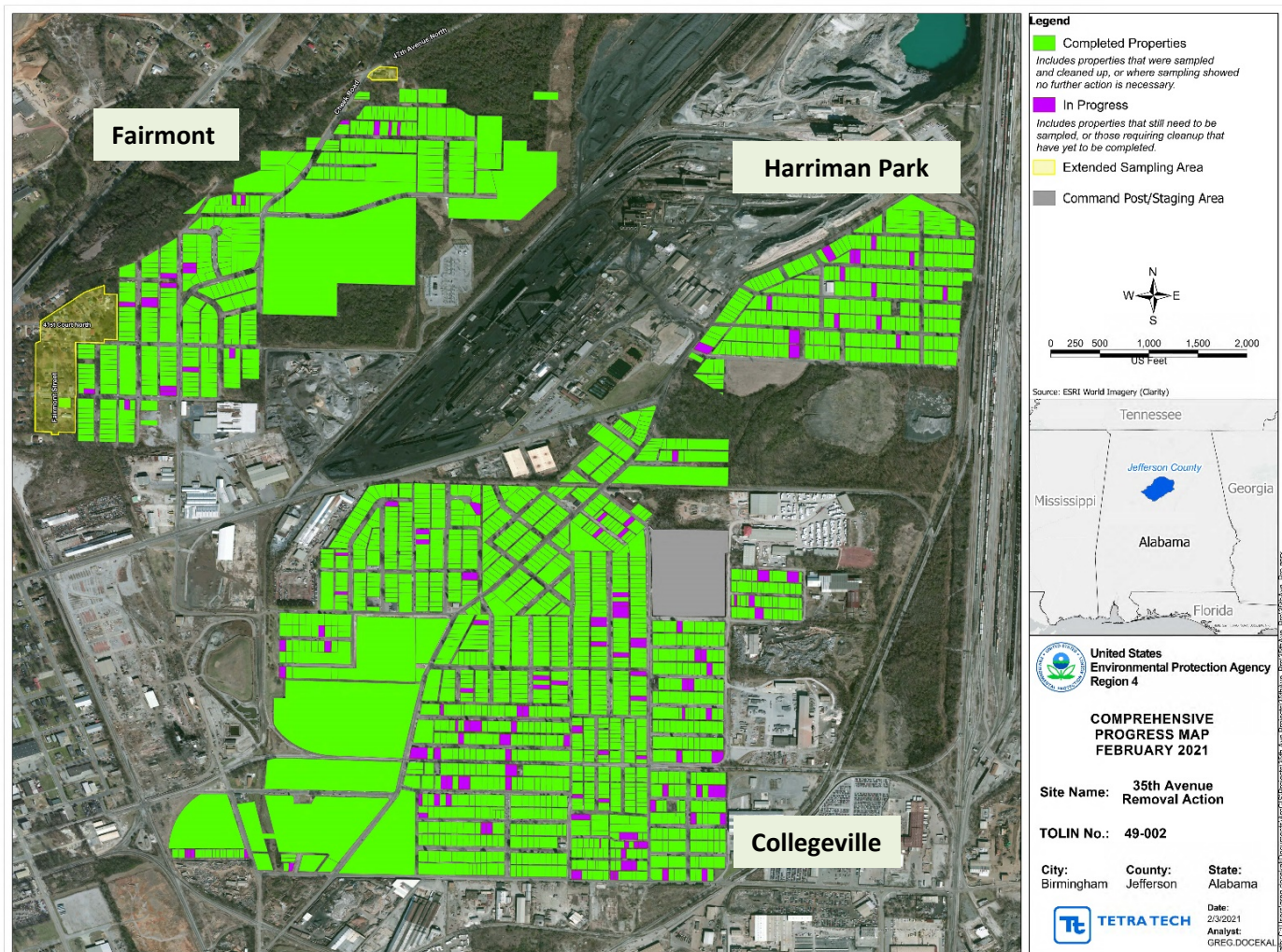
The sampling crew will be wearing PPE to protect themselves and others.



4

STEP 4:

If your property is sampled, EPA will inform you of the results, when available, and discuss any next steps needed.



Site map with expanded study areas offset (in yellow)

Continued Progress

EPA's primary mission is to protect human health and the environment. Since 2011, EPA has identified over 2,034 properties at the 35th Avenue Site that warrant investigation. Below is a snapshot of sampling and cleanup activities as of January 2021:



1,970 PROPERTIES
SAMPLED OUT OF
2,034 PROPERTIES



645 PROPERTIES
ABOVE LEVEL
REQUIRING CLEANUP



533 PROPERTIES
CLEANED TO DATE

Based on sampling results, 645 properties (about 30%) required cleanup. EPA has cleaned up 533 of these properties (about 25%). Since cleanup began, a total of 71,200 tons of contaminated soil have been excavated from the three communities that make up the Site and sent to an appropriate landfill for proper disposal.

History

The 35th Avenue Site is located in a historic residential area of northern Birmingham. The site includes parts of three neighborhoods – Collegeville, Fairmont and Harriman Park.

Elevated levels of lead, arsenic and polycyclic aromatic hydrocarbons (PAHs) have been found in soil on some properties across the Site. EPA believes that fill material potentially containing elevated levels of contamination from industrial facilities was brought onto some residential properties to fill in low-lying areas that were prone to flooding.

The EPA's policy is to hold responsible parties liable for cleanup costs, as directed by Superfund law. EPA is continuing its efforts to identify any viable responsible parties associated with the Site to potentially recover cleanup costs.

More Information

Please visit the 35th Avenue Site website, <https://www.epa.gov/superfund/35th-avenue>, for more information, including:

- [Access authorization form](#)
- [Background information](#)

You may also contact the Community Outreach Number or any of the Site contacts listed below to ask questions or get information.



35TH AVENUE SITE COMMUNITY OUTREACH NUMBER
(205) 326-8640

EPA On-Scene Coordinator
Subash Patel (404) 562-9217 patel.subash@epa.gov

EPA Community Involvement Coordinator
Kyle Bryant (404) 562-9073 bryant.kyle@epa.gov

www.epa.gov/superfund/35th-avenue

