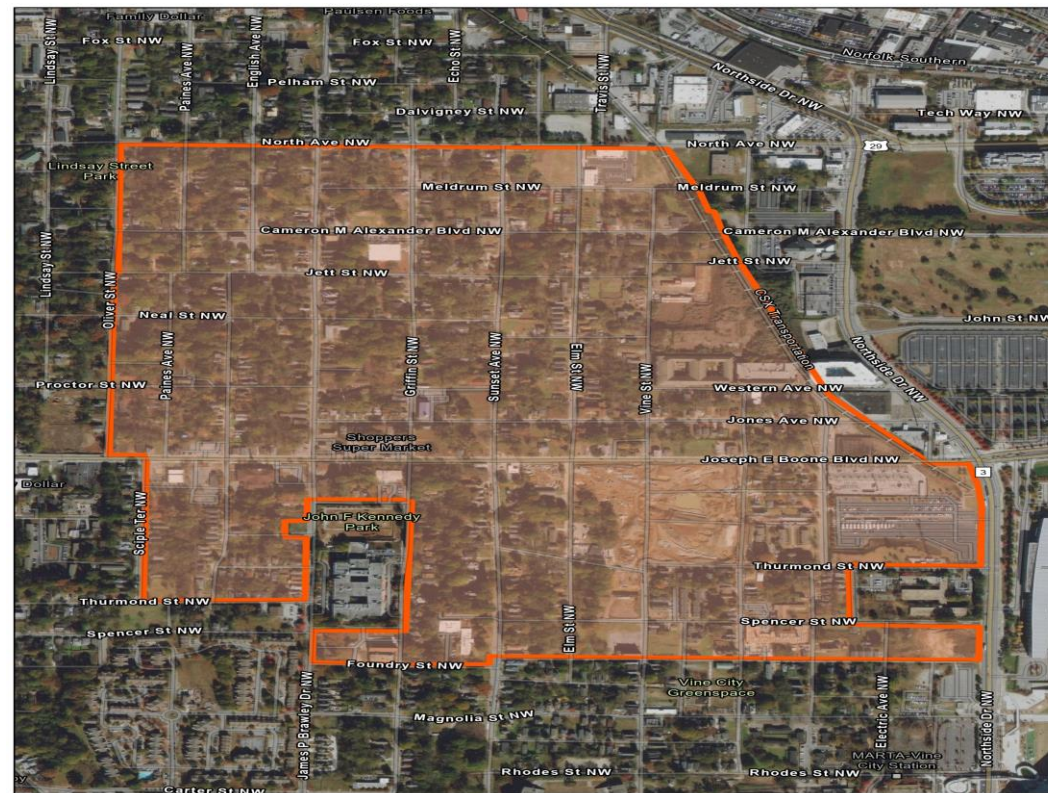


How do I get my yard sampled for lead?



The EPA is currently conducting residential soil sampling for lead at no cost to the tenant or homeowner.

The sampling area is bounded by the former CSX rail line and Northside Drive to the east, North Avenue to the north, Oliver Street and Sciple Terrace to the west, and Foundry Street to the south.



If you live in or own a property in any of these neighborhoods, please follow the next steps to get your yard sampled.

Step 1

Each property will be verified to ensure it is within EPA's current study area.

If you are unsure whether your property is within the study area, you may:

- Check the interactive map [here](#);
- Email the EPA Contractor at cheryl.vaccarello@tetrattech.com; or
- Call the Westside Lead Community Outreach Number at (678) 662-8603



**Email an EPA
Representative**

Step 2

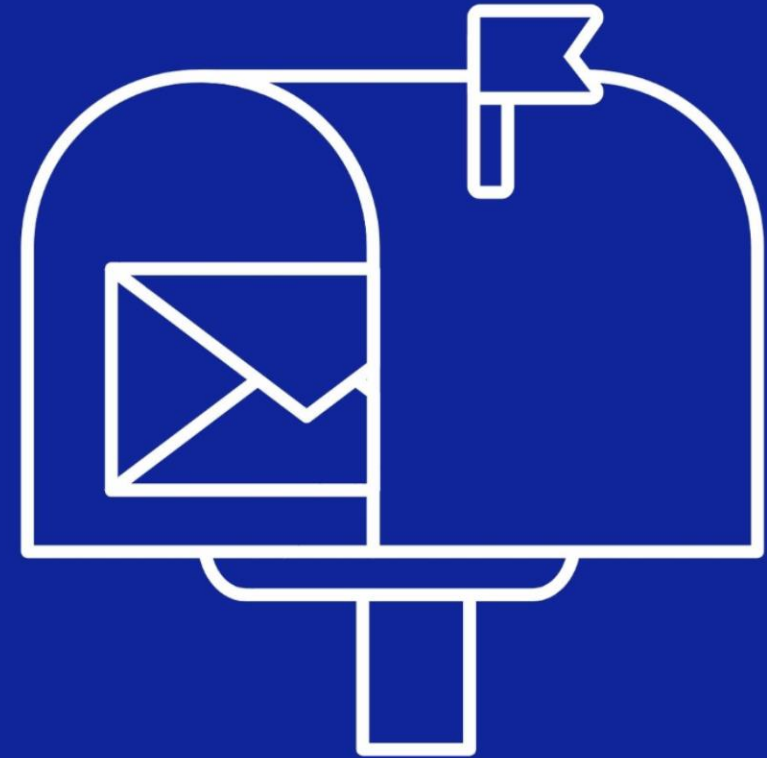
Sign an Access Authorization Form:

- [Access Authorization Form](#)

The signed Authorization can be mailed to:

U.S. EPA Region 4
c/o Westside Lead Project Office
1955 Evergreen Blvd.
Building 200, Suite 300
Duluth, GA 30096

For quicker processing, you may also email your form to [EPA](#) or send a picture of your form via text to (678) 662-8603.



**Submit Sampling Access
Authorization Form**

Step 3

An EPA contractor will contact you at the number you have listed on your Access Authorization Form for scheduling.

The sampling crew will be wearing masks, gloves, and safety vests during our activities as part of enhanced health and safety protocols.

While most sampling does not require interaction with the residents (we do not need to come inside your home), the resident may need to unlock a gate (or similar) to provide access.

If so, the sampling crew will always maintain a safe distance from the individual to avoid contact.



After Your Yard Has Been Sampled

About two (2) months after your yard is sampled, the EPA will mail the results to the mailing address listed on your Access Authorization form.

If your lead concentrations exceed 400 parts per million (ppm), the EPA will request a cleanup for your yard and further instructions will be provided in the near future.



**What Happens
Next?**