

## EPA Adds Westside Lead to the Superfund National Priorities List

March 2022

Fact Sheet 12

The U.S. Environmental Protection Agency has added the Westside Lead Site to the National Priorities List (NPL), a list of polluted locations in the United States requiring a long-term cleanup of hazardous material contamination. This fact sheet provides more information about the listing process, the Site's history, cleanup progress, next steps and community involvement opportunities.

### Superfund National Priorities List

The EPA proposed the Westside Lead Site to the Superfund program's NPL in September 2021. The Site encompasses residential properties in Atlanta's Westside that have been contaminated with lead from historical foundry operations. The Site was added to the NPL on March 16, 2022. Though EPA sampling and cleanup activities at the Site have been underway since 2019, the NPL listing means the Site is now eligible to receive federal funding for long-term cleanup. The EPA will continue to determine which yards are impacted by lead and conduct the necessary soil cleanup at the affected properties. Listing the Site on the NPL will allow EPA to evaluate the risks to public health and the environment associated with foundry waste and take all necessary cleanup actions. Listing the Site on the NPL will also provide increased annual funding, allowing for more resources and a faster project completion.

### Background

In 2018, an Emory University doctoral student shared data with EPA showing elevated lead levels collected from soil samples in Atlanta's Westside neighborhoods. Additional research by EPA led to the discovery of industrial smelting waste (slag) on at least two (2) lots near Elm Street. Sampling around the Elm Street area indicated lead levels above EPA's site-specific cleanup level of 400 milligrams per kilogram, also known as "parts per million" (ppm), were present in some, but not all locations.

In March 2019, EPA began sampling in the area to determine the extent of the contamination and appropriate next steps to protect public health and the environment. EPA's original Study Area has since been expanded several times. The current Study Area (shown in purple in Figure 1) includes approximately 2,097 residential properties north to

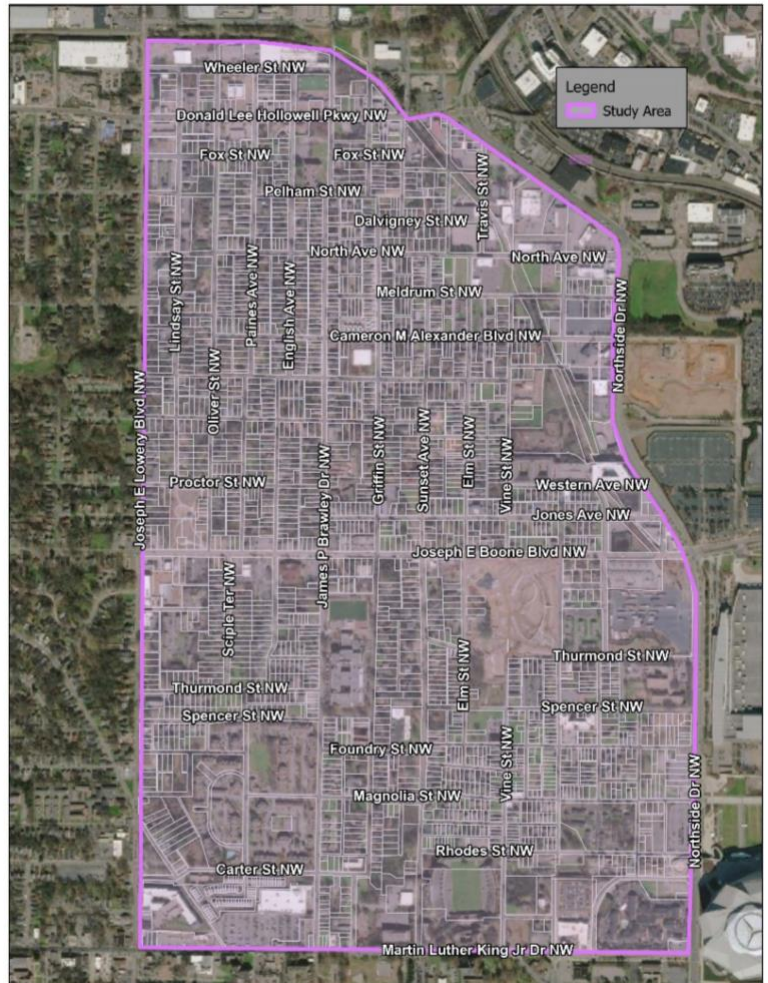


Figure 1: Current Study Area

Wheeler St. NW, west to Joseph E. Lowery Blvd. NW, south to Martin Luther King Jr Dr. NW, and east to Northside Dr. NW. The Study Area may be modified as new data becomes available.

## Progress Update

The Westside Lead Study Area includes approximately 2,097 properties. The EPA began cleaning up properties with lead contamination in the soil in January 2020. As of March 11, 2022, we have received 992 signed access authorization forms. Properties with lead levels above 400 ppm are being cleaned up. Below is a snapshot of sampling and cleanup activities as of March 11, 2022.



**951** PROPERTIES  
SAMPLED OUT OF  
2,097 PROPERTIES



**377** PROPERTIES  
ABOVE 400 PPM AND  
REQUIRE CLEANUP



**116** PROPERTIES  
CLEANED TO DATE

## Sampling Process

If you own or rent a residence in the Study Area and have not already had your property sampled, EPA encourages you to have your soil tested. **EPA will use its discretion consistent with agency policy to sample and clean up residential properties at no cost to homeowners and tenants.** EPA is focusing on properties where people live before addressing abandoned and vacant properties. To determine if your property is in the Study Area, please check the interactive map on EPA's website:

[www.epa.gov/superfund/westside-lead](http://www.epa.gov/superfund/westside-lead) or call the Westside Lead Community Outreach number at (678) 662-8603. To give EPA permission to sample your property, please follow the instructions in the box below or call (678) 662-8603.

After EPA receives your signed form, you will be contacted to schedule sampling at your property. Sampling results will be mailed to you after we receive final data. If your soil test shows elevated lead levels, EPA will remove the soil and return your property to its original condition.

### Free Soil Testing for Lead

If you are the tenant or owner, please download and sign an access authorization form to give EPA permission to sample your yard. The form is available at:

**[www.epa.gov/superfund/westside-lead](http://www.epa.gov/superfund/westside-lead)**

Please mail it back to:  
U.S. EPA Region 4  
c/o Westside Lead Project Office  
1955 Evergreen Blvd. Building 200, Suite 300  
Duluth, GA 30096  
or e-mail it to [cheryl.vaccarello@tetrattech.com](mailto:cheryl.vaccarello@tetrattech.com)

## Next Steps

EPA continues to sample soil and conduct soil cleanup at residential properties in the Study Area. In addition, EPA collected subsurface soil, groundwater, surface water and sediment samples as part of the broader Remedial Investigation (RI). The purpose of the RI is to collect the data necessary to assess any risks to human health and the environment, which will help determine whether additional cleanup beyond residential yards is needed. The table below outlines the steps and timeline for the next activities at Westside Lead Site.

Activity	Definition	Date
<b>Remedial Investigation/Feasibility Study (RI/FS)</b>	The RI/FS determines and documents the type(s) and locations of the contamination, risks to human health and the environment, and the effectiveness and costs of different technologies to clean up the site.	Summer 2022
<b>Proposed Plan (PP)</b>	A plan that identifies EPA's preferred cleanup method(s) and requests community input.	Fall 2022
<b>Record of Decision (ROD)</b>	A legal, technical, and public document that explains which cleanup method(s) will be used at a Superfund NPL site. The ROD is based on information and technical analysis generated during the RI/FS and consideration of public comments and community concerns.	Late Fall 2022
<b>Remedial Design</b>	The phase in a Superfund site cleanup where the technical specifications for cleanup remedies and technologies are designed.	Winter 2023
<b>Remedial Action Start</b>	The actual construction or implementation phase of a Superfund site cleanup that follows remedial design. The cleanup work under the Removal Program will continue until the Remedial Action begins under the Remedial Program.	Spring 2023

## Community Involvement

Community involvement plays a critical role in EPA's cleanup process, and the EPA is committed to promoting effective and meaningful communication between the public and the Agency. We want to make sure that (1) members of the affected community know and understand when and how they can participate in decision-making during the cleanup activities at the Site; and (2) the community's concerns and needs are considered and addressed as activities progress. A number of opportunities are available to communities surrounding NPL Sites, including:

**Community Advisory Group (CAG).** A CAG is made up of representatives of diverse community interests and serves as the focal point for the exchange of information among the local community and EPA. A CAG can assist EPA in making better decisions on how to clean up a site by allowing the Agency to hear and seriously consider community preferences for site cleanup and remediation.

**Technical Assistance Grant (TAG).** Often there are many complex, technical issues at Superfund sites. EPA's TAG program provides money to community groups so they can pay for technical advisors to interpret and explain technical reports, site conditions, and EPA's cleanup proposals and decisions. A technical advisor can help community members participate in decision making by helping them better understand and weigh in on site activities.

**Technical Assistance Services for Communities (TASC).** Provides independent assistance through an EPA contract to help communities better understand the science, regulations and policies of environmental issues and EPA actions. Under TASC, a contractor provides scientists, engineers and other professionals to review and explain information to communities on a project-specific basis.

To get more information about any of these programs or other programs available to the community, visit [www.epa.gov/superfund/superfund-community-involvement](http://www.epa.gov/superfund/superfund-community-involvement) or contact the Community Involvement Coordinator, Ron Tolliver, whose contact information is provided on the next page.

## For More Information

Please visit the Westside Lead website, [www.epa.gov/superfund/westside-lead](http://www.epa.gov/superfund/westside-lead), for more information, including:

- Step-by-step “How to Get My Yard Sampled” presentation
- Interactive map of the Westside Study Area
- Informational videos
- Access authorization forms Westside Lead Added to NPL and Activities Update
- Background information

## WESTSIDE LEAD COMMUNITY OUTREACH NUMBER (678) 662-8603

### EPA On-Scene Coordinators

**Chuck Berry (404) 562-8278**  
[berry.chuck@epa.gov](mailto:berry.chuck@epa.gov)

**Terrence Byrd (404) 562-8755**  
[byrd.terrence@epa.gov](mailto:byrd.terrence@epa.gov)

### EPA Remedial Project Manager

**Leigh Lattimore (404) 562-8768**  
[lattimore.leigh@epa.gov](mailto:lattimore.leigh@epa.gov)

### EPA Community Involvement Coordinator

**Ron Tolliver (404) 562-9591**  
[tolliver.ronald@epa.gov](mailto:tolliver.ronald@epa.gov)

[www.epa.gov/superfund/westside-lead](http://www.epa.gov/superfund/westside-lead)

or email us at [R4\\_Westside\\_Lead@epa.gov](mailto:R4_Westside_Lead@epa.gov)