

U.S. Environmental Protection Agency Kerr-McGee Chemical Corporation Columbus, Mississippi



Fact Sheet #5

November 2018

Public meeting to discuss the proposed cleanup plan

Thursday,
December 13, 2018
6:00 p.m. to 8:00 p.m.

*Genesis Dream Center
1820 23rd Street North
Columbus, Mississippi*

Introduction

The U.S. Environmental Protection Agency (EPA), with support from the Mississippi Department of Environmental Quality (MDEQ), is releasing a Proposed Plan to address contaminated soil at a portion of the Kerr-McGee Chemical Corporation Superfund Site in Columbus, Mississippi. The cleanup work described in the plan is already underway through a voluntary agreement with oversight from EPA and MDEQ. This expedited cleanup will prepare approximately 20 acres of the Site for reuse as early as next year.

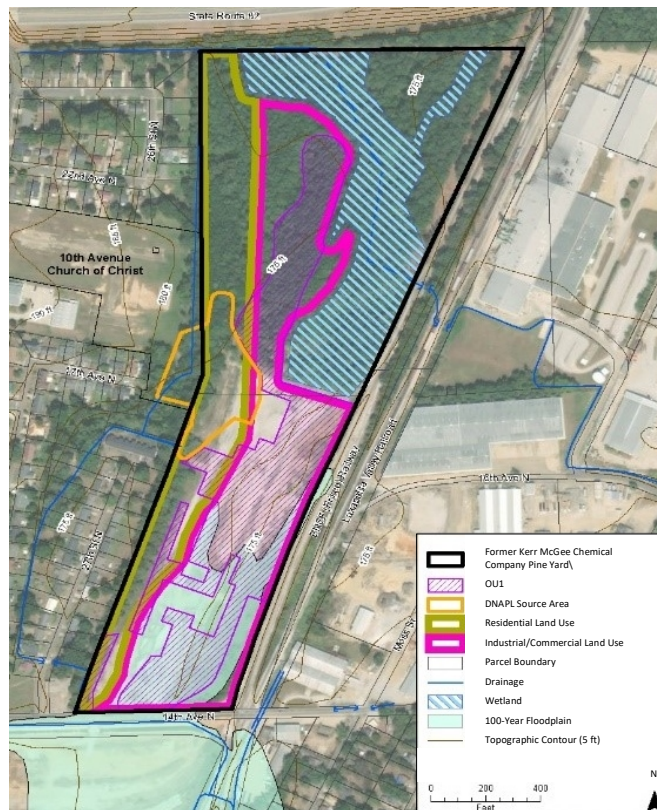
This fact sheet summarizes the ongoing cleanup and the associated Proposed Plan and public comment period. EPA will hold a public meeting on December 13, 2018. EPA is also soliciting public comments on the Proposed Plan for 30 days from December 7, 2018 to January 6, 2019.

Cleanup

In July 2018, removal of creosote and contaminated soil began in portions of the Pine Yard, known as Operable Unit 1 (OU-1, see figure). The contaminated material is being excavated from approximately 13 acres of the 44-acre Pine Yard and taken to an approved landfill for proper disposal, then replaced with clean fill. The cleanup is estimated to take six to 12 months and cost \$9,892,000, to be paid by the Multistate Trust.

EPA and MDEQ together with the Multistate Trust, which manages the Site, are working jointly on this voluntary cleanup to ensure it complies with applicable federal and state laws, is protective of human health and the environment and will support reasonably anticipated future reuse.

Site Figure



Proposed Plan

Though the cleanup work is underway, the Proposed Plan and Record of Decision to follow will ensure that Superfund cleanup goals are met under the ongoing voluntary cleanup for the OU-1 portion of the Site. Soil samples will be collected at the edges of the excavated areas and analyzed to confirm the remaining soils meet cleanup goals set forth by the EPA and MDEQ in the Proposed Plan.

A Remedial Investigation was completed to gather detailed information about the distribution of contamination associated with the Site to inform the cleanup plan. After identifying and considering numerous potential remedial technologies, four remedial alternatives were developed and evaluated as part of a Focused Feasibility Study to address the soil contamination in OU-1, including: (1) no action; (2) removal and off-site disposal; (3) removal and on-site consolidation; and (4) cover in place. Based on the evaluations of the four alternatives, EPA's preferred remedy for the contamination in OU-1 is alternative 2, removal and off-site disposal, as described in the "Cleanup" section above.

The cleanup will address contaminated soil between the ground surface and the water table approximately eight feet below in OU-1. Deeper soils contain dense, nonaqueous-phase liquid and are the primary source of contamination to groundwater. These deeper subsurface soils beneath the water table will be addressed as part of a future cleanup.

Public Comment

EPA relies on public input to ensure the concerns of the community are considered in selecting an effective remedy for each Superfund site. The public comment period runs from December 7, 2018 to January 6, 2019. The Proposed Plan, Remedial Investigation and Focused Feasibility Study reports are available in the Administrative Record for the Site online (website below) and in the Information Repository at the Columbus-Lowndes Public Library (address below).

You may email your comments to Charles King (king.charlesl@epa.gov). If you prefer to submit written comments, please mail them, postmarked no later than January 6, 2019, to Charles King at US EPA, 61 Forsyth Street, SW, 11th Floor, Atlanta GA 30303.

EPA will review and summarize the comments received and provide responses in the Responsiveness Summary, which will be part of the Record of Decision that identifies and provides the rationale for EPA's final remedy selection.

Background

The 90-acre Kerr-McGee site is located at 2300 North 14th Avenue in Columbus, Mississippi. The site includes the area where Kerr-McGee and its successor, Tronox Incorporated, conducted wood treating operations that released creosote and other hazardous materials into the soil, sediment and groundwater. EPA added the Site to the Superfund National Priorities List in 2011.

Pursuant to a 2011 settlement, the Greenfield Environmental Multistate Trust LLC (the Trust) is responsible for implementing all environmental actions at the Site with oversight from EPA and MDEQ.

2

FOR MORE INFORMATION

www.epa.gov/superfund/kerr-mcgee-chemical-columbus

Information Repository
Columbus-Lowndes Public Library
314 N. Seventh Street
Columbus, Mississippi 39701

CONTACTS

EPA Remedial Project Manager

Charles King (404) 562-8931
king.charlesl@epa.gov

EPA Community Involvement Coordinator

Kerisa Coleman (404) 562-8831
coleman.kerisa@epa.gov

Name: _____

Address: _____

PLACE
STAMP
HERE

*Charles King, Remedial Project Manager
U. S. EPA, Region 4
Superfund Division
61 Forsyth St., SW
Atlanta, GA 30303*
