

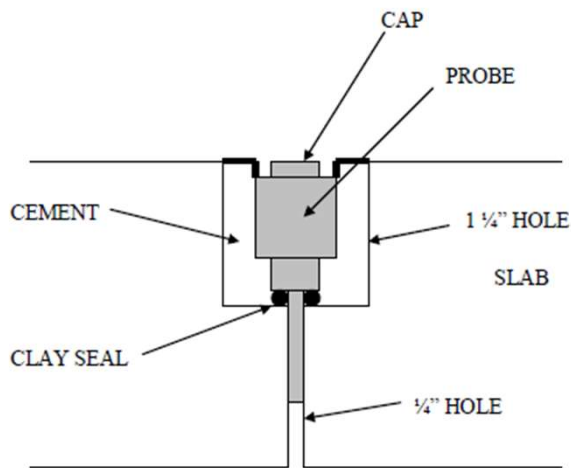
Sub-Slab Soil Vapor Sampling Fact Sheet

April 2021

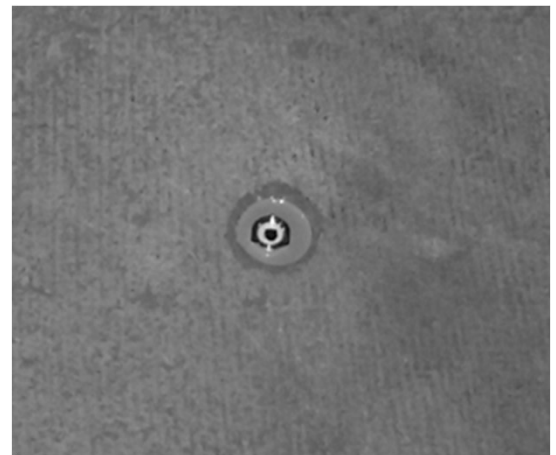
Based on the recent shallow groundwater sample results from a well located at the former Bally Case and Cooler factory, the U.S. Environmental Protection Agency (EPA) has determined that Vapor Intrusion (VI) monitoring should be conducted at the townhouses along N 4th Street between Dogwood Street and Chestnut Street. Sub-slab soil vapor samples will be collected from beneath the townhouses by Arcadis U.S., Inc. (Arcadis) at no cost to you.

How will sub-slab soil vapor sampling be conducted?

- During the initial visit, Arcadis will conduct a brief building survey and install sampling probes in your basement slab. The building survey will focus on the basement and will be conducted to identify certain features such as floor coverings, heating, ventilation and air conditioning equipment, work and storage areas, drainage and building construction features, and to identify household products (e.g., paints and cleaners) that could affect the sampling results.
- Following the survey, Arcadis will install two permanent sub-slab soil vapor probes in the basement slab. Using an electric drill, a ~1 ¼" hole will be drilled at each location. The vapor probe is inserted into the hole and grouted with a quick-setting cement.
- On a second visit, sub-slab soil vapor samples will be collected from each probe by removing the probe cap and connecting a sampling canister to the probe.



SUB-SLAB SOILS



Permanent sample probes like this will remain installed in the basement floor for potential future rounds of sampling

How long will sampling take?

- The initial visit to conduct the building survey and sample probe installation will take approximately 1 – 2 hours.
- The second visit to conduct sub-slab soil vapor sampling will take approximately 2 hours.



Typical sampling setup and monitoring devices

Guidelines for Residents

A representative from Arcadis will contact you to schedule the sampling event at your property. To avoid background interference during sample collection, starting at least 48 hours prior to and during the sampling event, we respectfully request that you do not:

- Bring freshly dry-cleaned clothes into the home.
- Use cleaning products (e.g., bathroom cleaners, furniture polish, appliance cleaners, and floor cleaners).
- Use paints, varnishes, or solvents (including participating in indoor hobbies that use these products).
- Open windows, fireplace openings or vents, or keep doors open for extended periods of time.
- Use air fresheners or odor eliminators.
- Apply pesticides.

Additional Sampling Information

- A sampling results letter will be sent approximately one month after samples are collected. If the results are elevated, Arcadis and/or EPA will contact you regarding additional sampling or other necessary follow-up.
- Once all monitoring is complete, the probes will be removed, and your basement slab will be restored to its original condition.

Health and Safety

All work will be conducted in a safe manner that follows a Health and Safety Plan and other detailed plans prepared specifically for this project. Onsite personnel will work closely with homeowners to safely complete work and limit disruptions to property and homeowners.

COVID-19 Protocols

Workers will be required to wear protective equipment such as face coverings and gloves while working inside. To further ensure the health and safety of homeowners and the crew, we also ask that social distancing is respected while the workers are on site.