



# Culpeper Wood Preservers Inc. Superfund Site



## Community Involvement Plan

Culpeper, Virginia

Prepared by: Cherokee Nation Assurance, LLC

Prepared for: U.S. EPA Region 3

April 2020

# Table of Contents

---

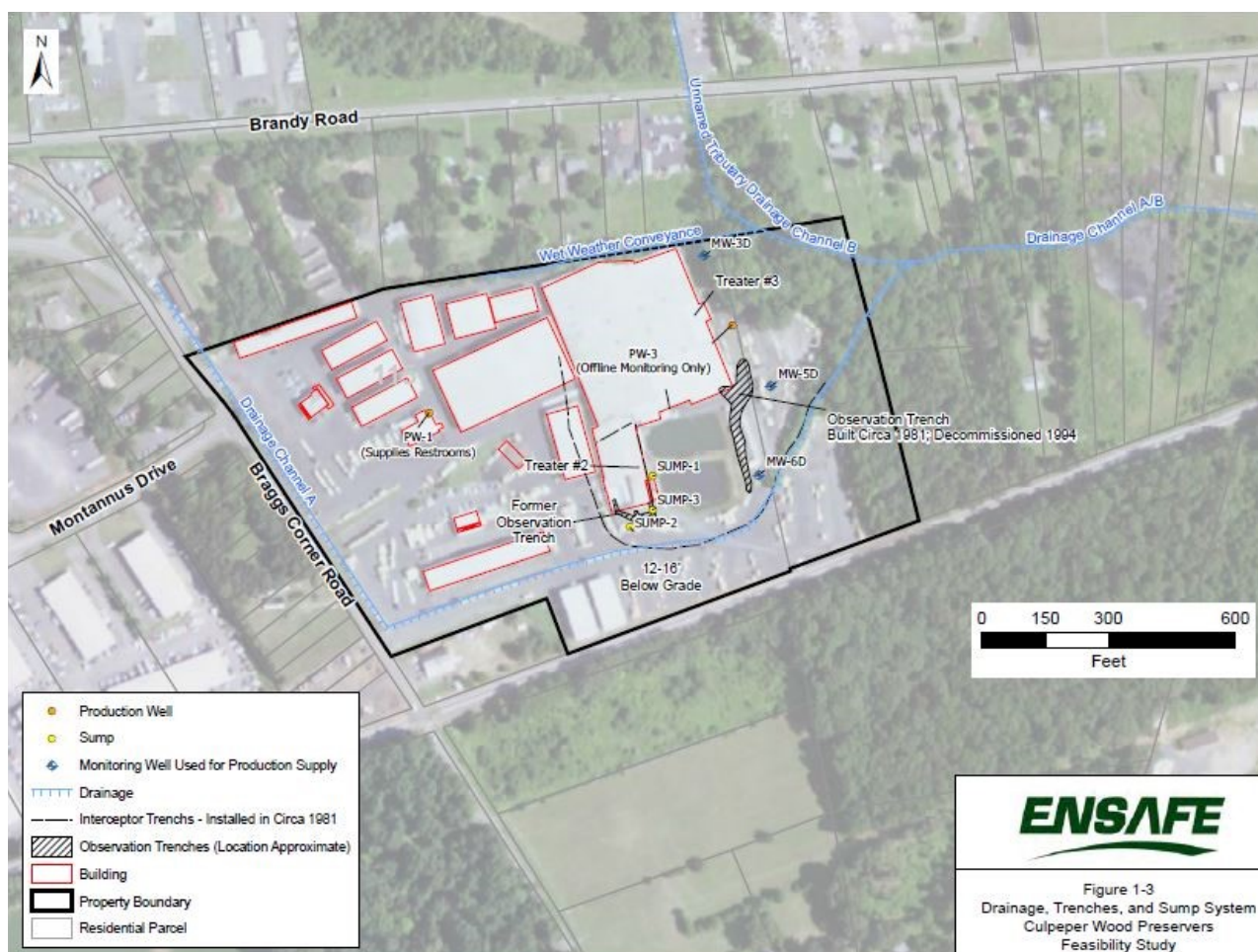
- 1. Introduction .....3
- 2. Superfund Overview .....4
  - 2.1 What is Superfund? .....5
  - 2.2 Components of the Superfund Remedial Process.....6
- 3. The Site: Overview & History .....8
  - 3.1 Site Overview .....8
  - 3.2 Site History .....8
- 4. The Community..... 10
  - 4.1 Community Demographics & Economic Profile .....10
  - 4.2 Community Feedback .....11
- 5. Community Involvement Action Plan .....12

Appendices

- A. EPA and Other Agency Contacts..... 15
- B. Elected Officials.....17
- C. Media Outlets .....19
- D. Potential Meeting Locations.....20
- E. Information Repositories.....21
- F. Sample Interview Questions .....22
- G. Additional Websites & Resources.....24

# 1 - Introduction

Under the federal Superfund program, the U.S. Environmental Protection Agency (EPA) is overseeing a comprehensive environmental investigation and cleanup at the Culpeper Wood Preservers, Inc. Superfund Site (Site). Since 1953, the Site has featured various owners and operators on both its North and South Plants, producing various chemicals and solvents. Due to the presence of arsenic and chromium compounds in the groundwater, the Site was added to the National Priorities List (NPL) on October 4, 1989, making it eligible for long-term investigation and cleanup.



Throughout the Superfund process, EPA is committed to involving the public and keeping the community informed about cleanup activities and how these activities may impact them. In keeping with that commitment, this Community Involvement Plan (CIP) has been developed to facilitate two-way dialogue between the community affected by the Culpeper Wood Preservers Inc. Site and EPA to encourage dynamic participation throughout the cleanup process. The CIP is a site-specific resource for EPA staff, state and local partners, and the community that provides general Superfund program information; describes the Site and impacted community; identifies and assesses community needs, concerns, and expectations; and shares planned participation activities and communication options.

### **Community Involvement Goals**

- Provide the community with accurate, timely, and understandable information about the cleanup in a manner that is considerate of their preference and culture;
- Facilitate opportunities for public input and ensure community needs and concerns are considered; and
- Respect and consider community input and feedback on EPA's process as it is being carried out.

This document was prepared in accordance with regulations and guidance documents for conducting community involvement activities related to environmental restoration. The CIP is an evolving document and will be updated as needed to ensure the community remains informed and involved throughout the cleanup process.

## 2 - Superfund Overview

### 2.1 - What is Superfund?

To participate in or follow the Superfund process as it unfolds in your community, it is important to know what Superfund is and how it works. EPA's Superfund program, created in 1980 under the Comprehensive Environmental Response, Compensation, and Liability Act (CERCLA) and amended in 1986 by the Superfund Amendments and Reauthorization Act (SARA), is responsible for cleaning up some of the nation's most contaminated land and responding to environmental emergencies, oil spills, and natural disasters. To protect public health and the environment, the Superfund program focuses on making a visible and lasting difference in communities, ensuring that people can live and work in healthy, vibrant places.

The Superfund cleanup process is complex and involves many steps. First, the Site Assessment program determines if a site poses an urgent risk needing immediate, short-term action that should be taken by EPA's Superfund Removal Program, or if a site poses less critical risk and should be placed on the National Priorities List (NPL). Some sites require no further action or may be referred to state agencies, but sites placed on the NPL undergo extensive investigation before appropriate cleanup plans can be determined and implemented. This long-term process is conducted by EPA's Superfund Remedial program. However, even during Remedial program activities, the Removal program can take immediate actions at any time if needed and/or beneficial.

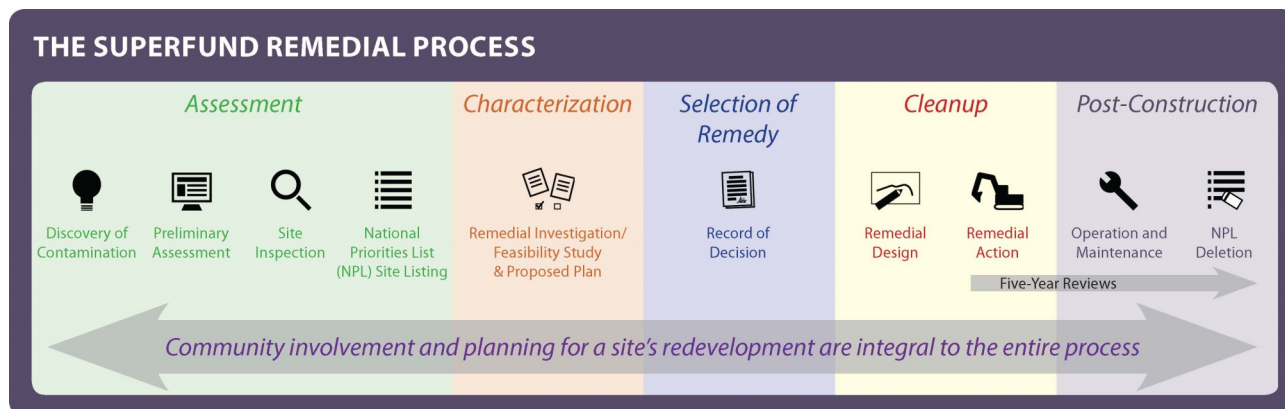
While investigating or addressing a site, EPA is committed to ensuring that those who are responsible take the lead in cleanup, when appropriate, throughout the Superfund process. These parties are called potentially responsible parties (PRPs).

EPA also partners with states and tribes and takes steps to keep affected community members involved. It is important that community members know that EPA works to ensure that cleanup actions are conducted safely and provide long-term protection of human health and the environment.

#### For more information, please visit:

- **EPA's Superfund website**  
<https://www.epa.gov/superfund>
- **This is Superfund: A Community Guide to EPA's Superfund Program**  
<https://semspub.epa.gov/src/document/HQ/175197>
- Additional web resources are provided in [Appendix G](#).

## 2.2 Components of the Superfund Remedial Process



### Site Discovery and Preliminary Assessment/Site Investigation (PA/SI)

This stage includes reviewing historical information and visiting a site to evaluate the potential for a release of hazardous substances. EPA determines if the site poses a threat to human health and the environment and whether hazards need to be addressed immediately or if additional site information will be collected.

### National Priorities List (NPL) Site Listing

The NPL is an information resource that identifies sites that warrant cleanup. It is a list of the worst hazardous waste sites identified by the Superfund program. The list is largely based on the score a site receives from the Hazard Ranking System (HRS) during the Site Assessment process.

### Remedial Investigation and Feasibility Study (RI/FS)

This stage involves an evaluation of the nature and extent of site contamination and an assessment of potential threats to human health and the environment. It also includes the evaluation of the potential performance and cost of treatment options identified for a site.

### Proposed Plan

The Proposed Remedial Action Plan (PRAP) summarizes the RI/FS and identifies the preferred cleanup remedy that EPA thinks balances all considerations.

### Record of Decision (ROD)

Following a PRAP public comment period, a final ROD is issued, explaining which cleanup alternative(s) will be used at the site.

### **Remedial Design (RD) and Remedial Action (RA)**

Detailed cleanup plans are developed and implemented during this stage. RD includes development of engineering drawings and specifications for a site cleanup. RA follows design and involves the actual construction or implementation phase of site cleanup.

### **Five-Year Review (FYR)**

This is an analysis prepared every five years to determine if site cleanup remedies remain protective of human health and the environment. A five-year review is required when hazardous substances remain on site above levels that allow for unlimited use and unrestricted exposure. The community is notified of the five-year review and asked to provide any information it has about the operations of the as-built remedy or any issues and concerns that have arisen regarding the cleanup.

### **Operation and Maintenance**

After EPA determines that the physical construction at a site is complete, activities are put in place to ensure that the cleanup actions will protect human health and the environment over the long-term. For example, these activities may include routine maintenance at the site, such as making sure signs and fences are intact, ensuring treatment systems are running smoothly, and enforcing any long-term site restrictions.

### **NPL Deletion**

Once cleanup goals have been achieved and a site is deemed fully protective of human health and the environment, EPA deletes it from the NPL.

### **Site Reuse**

EPA's goal is to make sure site cleanup is consistent with the likely future use of a site. Consideration of reuse and redevelopment at a site can occur at any point in the Superfund cleanup process. EPA works with communities to make sure a site or portions of a site are used safely and in a beneficial way for the community.

## 3 - The Site: Overview & History

---

### 3.1 - Site Overview

The Culpeper Wood Preservers, Inc. Site, located in Culpeper County, Virginia, is an active 20-acre wood treatment facility that formerly used the chromated copper arsenate (CCA) waterborne treatment process. Early on in the plant's operation, pressure-treated lumber was placed on an uncovered drip pad. As the lumber dried, CCA-contaminated water dropped directly to the ground. In early 1981, approximately 100,000 gallons of CCA-contaminated wastewater were released from an unlined, on-site waste impoundment, contaminating neighboring surface waters. In January 1982, the Virginia State Water Control Board (SWCB) determined that the groundwater had become contaminated with arsenic and chromium from the wood treatment processes. The Site was formally added to the NPL on October 4, 1989 making it eligible for federal cleanup funds.

### 3.2 - Site History

In 1981, EPA and the Commonwealth of Virginia required that Culpeper Wood Preservers, Inc., the PRP, improve site conditions to control contaminated runoff. These improvements included removing a portion of contaminated soil, constructing newly covered drip pads, and reconstructing the waste impoundment. In addition, trenches were dug down gradient from the impoundments to catch leachate.

Culpeper Wood Preservers entered into a Consent Order with EPA to conduct a site-wide study to determine the extent of contamination and to identify alternative technologies for the cleanup at the site. Sampling of the surface water and sediments in the wetland areas down gradient from the site occurred in the spring of 2007. The bulk of the sampling (groundwater, soil, surface water, and sediments) on and near the Site occurred in August of 2007. Residential well sampling and additional soil sampling occurred in August 2008. Follow-up residential well sampling occurred in November 2008. Based on the residential well sampling, Culpeper is now supplying several homes with bottled water.

The Remedial Investigation was finalized on September 22, 2016 and the Feasibility Study report was finalized on May 13, 2019. On October 2, 2019, EPA determined that the release and threatened release of hexavalent chromium and arsenic from the Site may present an imminent and substantial endangerment to public health or the environment.



EPA began work on a removal action at the Site in 2019, which will include installing a water line to connect many residents living near the Culpeper Wood Preservers Site to public water. Currently, the plans and timeline for this project are being developed. Work is expected to begin in the Summer of 2020 after public outreach, such as door-to-door visits and public meetings.

## 4 - The Community

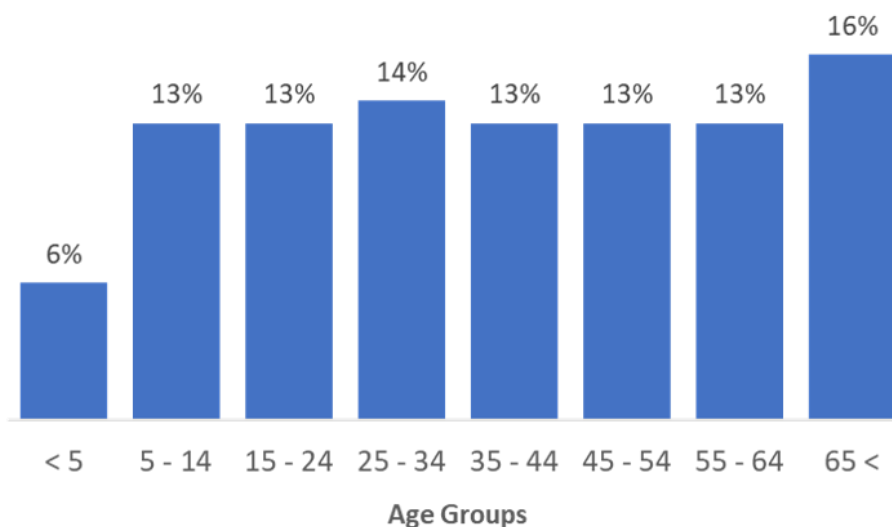
### 4.1 Community Demographics & Economic Profile

#### Culpeper County, Virginia Demographics

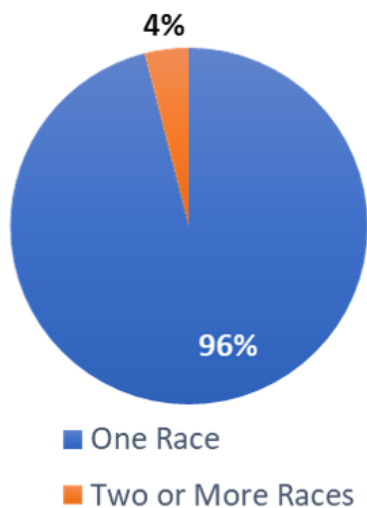
According to the U.S. Census Bureau American Community Survey (ACS) 2013-2017 Estimates, there were **49,795 people** living in **16,837 households**.

The gender breakdown was **50% male** and **50% female**.

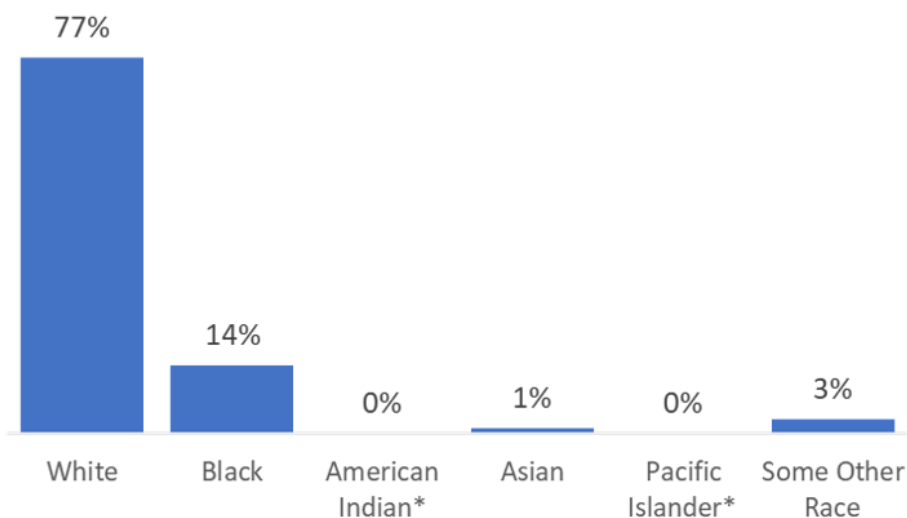
#### Population by Age:



#### Population by Race:



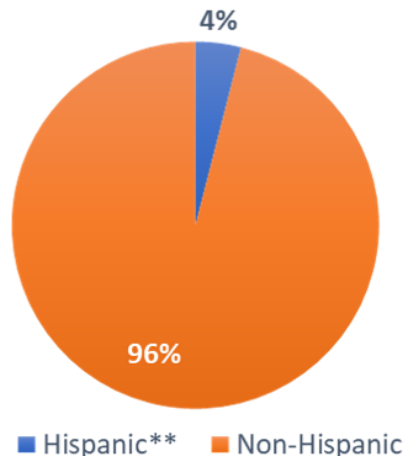
#### Race of Individuals Who Identified as One Race:



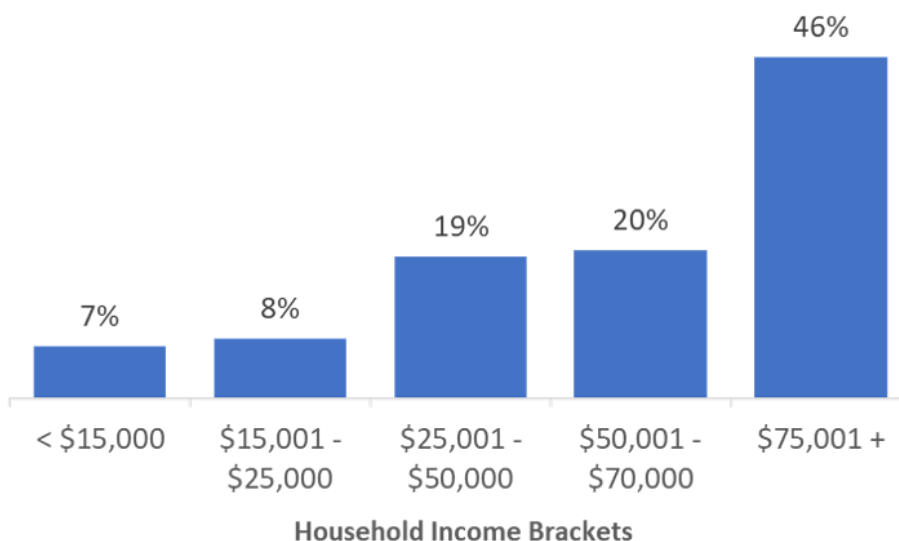
\*Less than 1%

### Total Hispanic and Non-Hispanic Population:

\*\*Hispanic population can be of any race



### Households by Household Income:



## 4.2 Community Feedback

EPA has met or spoke via phone with the vast majority of the owners, residents, and employees of the businesses that will be connected to the municipal waterline. Almost all individuals strongly support connecting to the waterline and have expressed concerns regarding the long-term use of bottled water which has been provided by the potentially responsible party. Approximately 20% of the individuals contacted are of Hispanic descent and several individuals primarily speak Spanish. EPA will perform outreach activities in both English and Spanish to ensure all citizens have an opportunity to engage in the cleanup process.

## 5 - Community Involvement Action Plan

The foundation of Superfund's Community Involvement program is the belief that members of the community affected by a Superfund site have the right to be informed and involved in EPA's decision-making process. EPA recognizes the benefits that an engaged public brings to the Superfund cleanup process and is committed to providing and encouraging public participation so that the people whose lives have been impacted by hazardous waste sites and EPA's actions to clean them up, have a say in what happens in their community. EPA's Community Involvement program strives to maintain a consistent community presence and build relationships with the residents, local stakeholders, tribes and federal, state and local government agencies.

This Community Involvement Action Plan highlights EPA's key objectives, methods, and timeline for conducting site-specific activities. Which ones are used and how frequently they occur usually reflect the stage in the process and level of interest expressed by the community. To establish this plan, EPA considers several factors, including federal requirements and EPA policy that assess the nature and extent of known or perceived site contaminants and known community needs, concerns, and recommendations.

For more information about available resources and opportunities, visit:

### **EPA's Superfund Community Involvement Website**

<https://www.epa.gov/superfund/superfund-community-involvement>

### **EPA Points of Contact**

#### **Evelyn Sorto**

#### **Remedial Project Manager**

U.S. EPA Region III  
1650 Arch Street - 3SD23  
Philadelphia, PA 19103  
Phone: (215) 814-2123  
Email: [sorto.evelyn@epa.gov](mailto:sorto.evelyn@epa.gov)

#### **Katie Page**

#### **Community Involvement Coordinator**

U.S. EPA Region III  
1650 Arch Street - 3RA22  
Philadelphia, PA 19103  
Phone: (215) 814-2409  
Email: [page.katherine@epa.gov](mailto:page.katherine@epa.gov)

## Community Involvement Action Plan

Community Involvement Objectives	Tools & Methods	Status
Maintain points of contact	Points of contact (see <a href="#">Appendix A</a> ), Site website	Completed
Establish a location for the community to access key Site information	Information repository in community and at EPA (see <a href="#">Appendix E</a> )	Completed
Maintain a consistent community presence to build relationships, especially among those directly affected by contamination and cleanup and non-English speaking families	Phone calls and door-to-door outreach to residents and businesses near the Site, factsheet distribution, Site website updates. Write and distribute news releases and public notices. Notify media for public comment periods, meetings, and information sessions. Have outreach materials and engagement events in English and Spanish to accommodate Hispanic population.	Door-to-door outreach; ongoing as needed
Conduct early, frequent, and meaningful community involvement activities using a wide variety of tools and strategies to engage and communicate ongoing and planned site activities with the community		Ongoing as needed
Explain technical site activities and findings in a format that all can understand	Fact sheets, Technical Assistance Services for Communities (TASC), Community Advisory Group (CAG), and Technical Assistance Grant (TAG)	Ongoing as needed
Evaluate community involvement and outreach efforts and adjust as necessary	Update Community Involvement Plan	April 2020; Periodically throughout the cleanup process
Coordinate with local authorities	Meetings and updates via phone	Ongoing as needed

## Opportunities to get Involved and get Support

### **Community Advisory Group (CAG)**

(<https://www.epa.gov/superfund/superfund-community-advisory-groups>)

- Self-governing stakeholder group that meets regularly to learn about EPA's cleanup process, discuss issues and concerns, and provide feedback to EPA. EPA can provide support to the CAG by attending meetings, making presentations, procuring meeting rooms, advertising the meetings, and providing copies of site-related documents.

### **Technical Assistance Grant (TAG)**

(<https://www.epa.gov/superfund/technical-assistance-grant-tag-program>)

- Competitive federal grant awarded to an incorporated nonprofit organization of community members affected by a site. Recipients contract with independent technical advisors to interpret, review, and evaluate site-related technical information.

### **Technical Assistance Services for Communities (TASC)**

(<https://www.epa.gov/superfund/technical-assistance-services-communities-tasc-program>)

- Program that provides independent educational and technical assistance to communities affected by a site. Such assistance helps communities to better understand the hazardous waste issues confronting them and make them well-informed while participating in the decision-making process.

For questions, please contact:

**Gina Soccia, EPA Region III's CAG/TAG/TASC Coordinator**

(215) 814-5538

[soccia.gina@epa.gov](mailto:soccia.gina@epa.gov)

## Appendix A - EPA and Other Agency Contacts

---

### EPA

**Evelyn Sorto**

Remedial Project Manager  
U.S. EPA Region III  
1650 Arch Street – 3SD23  
Philadelphia, PA 19103  
Phone: (215) 814-2123  
Email: [sorto.evelyn@epa.gov](mailto:sorto.evelyn@epa.gov)

**Gina Soscia**

**CAG/TAG/TASC Coordinator**  
U.S. EPA Region III  
1650 Arch Street - 3RA22  
Philadelphia, PA 19103  
Phone: (215) 814-5538  
Email: [soscia.gina@epa.gov](mailto:soscia.gina@epa.gov)

**Charlie Fitzsimmons**

On-Scene Coordinator  
USEPA Environmental Science Center  
701 Mapes Road – 3SD31  
Fort Meade, MD 20755  
Phone: (410) 305-3027  
Email: [fitzsimmons.charlie@epa.gov](mailto:fitzsimmons.charlie@epa.gov)

**Mark Ferrell**

**State and Congressional Liaison**  
USEPA Wheeling Office  
1060 Chapline Street, Suite 303 - 3RA20  
Wheeling, WV 26003  
Phone: (304) 542-0231  
Email: [ferrell.mark@epa.gov](mailto:ferrell.mark@epa.gov)

**Kevin Clark**

On-Scene Coordinator  
USEPA Wheeling Office  
1060 Chapline Street, Suite 303 - 3SD31  
Fort Meade, MD 20755  
Phone: (304) 234-0251  
Email: [clark.kevin@epa.gov](mailto:clark.kevin@epa.gov)

**Katie Page****Community Involvement Coordinator**

U.S. EPA Region III  
1650 Arch Street—3RA22  
Philadelphia, PA 19103  
Phone: (215) 814-2409  
Email: [page.katherine@epa.gov](mailto:page.katherine@epa.gov)

Last Updated: April 2, 2020

## ATSDR

### **Karl Markiewicz**

1650 Arch Street  
Philadelphia, PA 19103  
Phone: (215) 814-3149  
Email: [markiewicz.karl@epa.gov](mailto:markiewicz.karl@epa.gov)  
[www.atsdr.cdc.gov](http://www.atsdr.cdc.gov)

## Virginia

### **Virginia Department of Environmental Quality (DEQ)**

#### **Angie McGarvey**

P.O. Box 1105  
Richmond, VA 23218  
Phone: (804) 698-4084  
Email: [angela.mcgarvey@deq.virginia.gov](mailto:angela.mcgarvey@deq.virginia.gov)  
<https://www.deq.virginia.gov>

### **Virginia Department of Health - Office of Drinking Water**

#### **Deborah Hoy**

400 S. Main Street  
Culpeper, VA 22701  
Phone: (540) 829-7332  
Email: [deborah.hoy@vdh.virginia.gov](mailto:deborah.hoy@vdh.virginia.gov)  
<http://www.vdh.virginia.gov/drinking-water/>

### **Virginia Department of Health - Rappahannock/Rapidan Health District**

#### **Whitney Wright**

98 Alexandria Pike, Suite 42  
Warrenton, VA 20186  
Phone: (540) 316-6275  
Email: [whitney.wright@vdh.virginia.gov](mailto:whitney.wright@vdh.virginia.gov)  
<http://www.vdh.virginia.gov/rappahannock-rapidan/>

Last Updated: April 2, 2020



## Appendix B - Elected Officials

---

### Federal

#### **Senator Time Kaine**

231 Russell Senate Office Building  
Washington, D.C. 20510  
Phone: (202) 224-4024  
<https://www.kaine.senate.gov>

#### **Senator Mark Warner**

703 Hart Senate Office Building  
Washington, DC 20510  
Phone: (202) 224-2023  
<https://www.warner.senate.gov>

#### **Representative Abigail Spanberger 7 District**

1239 Longworth HOB  
Washington, DC 20515  
Phone: (202) 225-2815  
<https://spanberger.house.gov>

### State

#### **Governor Ralph Northam**

P.O. Box 1475  
Richmond, VA 23218  
Phone: (804) 786-2211  
<https://www.governor.virginia.gov>

#### **Senator Emmett Hanger, 24 District**

Pocahontas Building  
Room No: E507  
Senate of Virginia  
P. O. Box 396  
Richmond, VA 23218  
Phone: (804) 698-7524  
<https://apps.senate.virginia.gov/Senator/memberpage.php?id=S47>

#### **Representative Michael Weibert, 18 District**

Pocahontas Building  
900 E. Main St,  
Richmond, Virginia 23219  
Phone: (804) 698-1018  
<https://viriniageneralassembly.gov/house/members/members.php?id=H0247>

Last Updated: April 2, 2020

## Appendix B - Elected Officials

---

### Local

#### **Town of Culpeper**

400 S. Main Street  
Culpeper, VA 22701  
Phone: (540) 829-8240  
<https://www.culpeperva.gov>

Mayor Michael Olinger  
Phone: (540) 717-4575  
Email: [molinger@culpeperva.gov](mailto:molinger@culpeperva.gov)

---

#### **Culpeper County**

302 N. Main Street  
Culpeper, VA  
Phone: (540) 727-3427  
<https://www.culpepercounty.gov>

#### **Board of Supervisors**

Brad C. Rosenberger, Chairman - Jefferson District  
Sue D. Hansohn, Vice-Chairman - Catalpa District  
C. Jack Frazier - Cedar Mountain District  
Alexa V. Fritz - Salem District  
Steven L. Walker - East Fairfax District  
Gary M. Deal - West Fairfax District  
William C. Chase, Jr. - Stevensburg District

Last Updated: April 2, 2020

## Appendix C - Media Outlets

---

### Newspapers

#### **The Culpeper Star Exponent**

122 West Spencer Street  
Culpeper, VA 22701  
Phone: (540) 825-0771  
<https://www.starexponent.com>

#### **The Culpeper Times**

206 S Main Street  
Culpeper, VA 22701  
Phone: (540) 812-2282  
<http://www.culpepertimes.com>

### Television Stations

#### **NBC 12 - WWBT**

5710 Midlothian Turnpike  
Richmond, VA 23225  
Phone: (804) 230-1212  
<https://www.nbc12.com>

#### **ABC 8 - WRIC**

301 Arboretum Pl  
Richmond, VA, 23236  
Phone: (804) 330-9780  
<https://www.wric.com>

#### **CBS 6 - WTVR**

3301 West Broad Street  
Richmond, VA 23230  
Phone: (804) 254-3600  
<https://wtvr.com>

#### **PBS VPM - WCVE**

23 Sesame Street  
Richmond, VA 23235  
Phone: (804) 320.1301  
<https://vpm.org>

### Radio Station

#### **88.9 WCVE—National Public Radio 23**

Sesame Street  
Richmond, VA 23235  
Phone: (804) 320-1301  
<https://vpm.org/listen>

Last Updated: April 2, 2020

## Appendix D- Potential Meeting Locations

---

**Culpeper Board of Supervisors**

302 N. Main Street  
Culpeper, VA 22701

**Dulce Home Realty, Inc.**

16126 Brandy Road  
Culpeper, VA 22701

Last Updated: April 2, 2020

## Appendix E - Information Repositories

---

When EPA proposes a site cleanup plan, it collects the documents that were used or relied upon to develop the proposed action. This collection of technical documents is called the Administrative Record. The Administrative Record is available online and at the information repositories. The following information repositories have been established for the Culpeper Wood Preservers site:

### Local Repository

#### **Culpeper County Library**

271 Southgate Shopping Center  
Culpeper, VA 22701  
Phone: (540) 825-8691

### EPA Office

#### **U.S. EPA Region 3**

#### **Administrative Records Room**

1650 Arch Street  
Philadelphia, PA 19103  
Phone: (215) 814-3157, by appointment

### Online

<https://semspub.epa.gov/src/collections/03/AR/VAD059165282>

<https://www.epa.gov/superfund/culpeper>

Last Updated: April 2, 2020

## Appendix F - Sample Interview Questions

---

### General Information

1. Are you aware of the Culpeper site?
2. (For residents) How long have you lived in this community?
3. (For officials) Do you live in the area affected by the site?
4. When/how did you first learn about the site?
5. What have you heard about the site?
6. What/who is the source of this information?
7. Do you think this information is credible?
8. Who do you consider reliable sources of information about local environmental issues?
9. Are there environmental concerns in the community, other than this site?
10. Who are the major employers in this area?
11. Did you or others in the community take any actions to focus attention on conditions at the site? If so, what were your concerns or goals?
12. Do you or anyone you know work at the site?
13. What are your current concerns about the site?

### Community Involvement Information

1. Do you think community members would be interested in forming a community panel to follow the work at the site and help keep the community-at-large informed?
2. Would you be interested in forming such a group?
3. Do you know others who might be interested in such a group?
4. Do you know of any environmental or special interest groups, such as sportsmen's groups, that may be interested in participating in a group or being kept informed of site-related activities?

### Keeping Residents Informed

1. What are the best ways for us to communicate with you? (Mailings, Email, Meetings/Information Sessions, Public Notices, etc.)
2. What kinds of information do you want?
3. How do you usually get information about the community or local environmental concerns?

Last Updated: April 2, 2020

4. Does your municipality have a cable station, website, or newsletter to keep community members informed?
5. What newspapers are most popular in this area? (Are they daily, weekly, online, or hard copies?)
6. What TV stations cover local news?
7. What radio stations, if any, do you listen to most often?
8. Do you use the internet or other social media, such as Twitter or Facebook?
9. Do you know of any residents in the site vicinity who have communications differences, such as hearing or visual impairments?
10. Do you know of residents in the site vicinity who may require translation services?
11. Are there residents or areas in the site vicinity that could be characterized as disadvantaged (or environmental justice communities)?

#### Planning Community Events

1. If EPA wanted to hold a meeting or an open house, can you suggest any locations that are convenient for residents?
2. Are there any nights of the week that we should avoid when scheduling meetings?
3. Are there seasonal community activities that are important and widely attended?

Last Updated: April 2, 2020

## Appendix G - Additional Websites & Resources

---

**Culpeper Wood Preservers Superfund Site**

<https://www.epa.gov/superfund/culpeper>

**EPA's Superfund Program**

<https://www.epa.gov/superfund>

**Superfund Community Involvement**

<https://www.epa.gov/superfund/superfund-community-involvement>

**This is Superfund: A Community Guide to EPA's Superfund Program**

<http://semspub.epa.gov/src/document/HQ/175197>

**ATSDR ToxFAQS page**

<http://www.atsdr.cdc.gov/toxfaqs/index.asp>

Last Updated: April 2, 2020