

NEWARK SOUTH GROUNDWATER PLUME

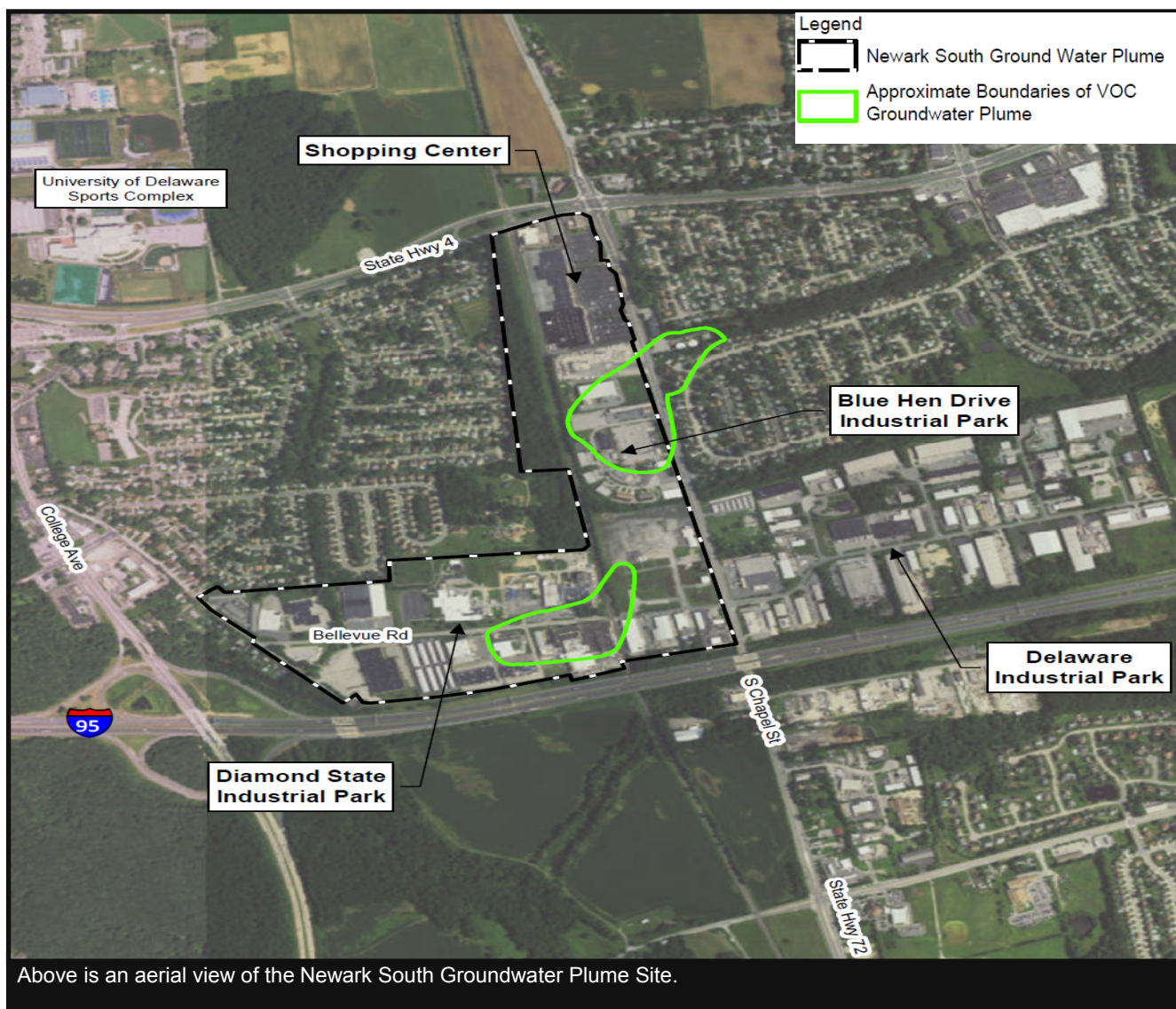


Newark South Groundwater Plume Site, New Castle County, Delaware

November 2016

Description of Site

The Newark South Groundwater Plume Site is generally located in southeast Newark, along Route 72, between Bellevue Road and Rt.4 (East Chestnut Hill Road) in New Castle County, Delaware. The Site encompasses approximately 50 property parcels, covering approximately 164 acres and includes portions of two commercial/industrial complexes and one commercial plaza. Two groundwater plumes have been identified across two main areas of interest. The northern area of interest is located beneath properties in the Pencader Plaza (formerly Castle Mall), the Blue Hen Industrial Park and homes around Scottfield Drive. The southern area of interest is located beneath a portion of the Diamond State Industrial Park along Bellevue Road, north of I-95. It is not yet known whether the two groundwater plumes are connected.



History of Contamination and Treatment

Numerous environmental investigations and remedial actions have been completed on contaminated properties in the area and several continue to date. The primary contaminants of concern within the Site are volatile organic compounds including tetrachloroethene (PCE) and trichloroethene (TCE). The City of Newark has six impacted municipal wells located within the area. The City of Newark has reported the presence of low levels of the contaminants in the untreated/raw groundwater from several of its public supply wells since 1999.

The public drinking water supplied by the City has long been treated to remove the contaminants from the untreated/raw water and continues to meet Federal and State Safe Drinking Water Act standards, as shared annually in its water quality reports.

EPA's Involvement

In 2010, the Delaware Department of Natural Resources and Environmental Control (DNREC) requested funding from the EPA to conduct a Preliminary Assessment at the Site to help identify the potential source(s) of the contamination in the groundwater. The Preliminary Assessment identified multiple areas of potential environmental concern. Based on results of the Preliminary Assessment, DNREC recommended additional investigation to help identify the potential source(s).

In 2014, EPA requested DNREC continue to assess the groundwater contamination with a Site Inspection (SI). As part of the SI, 68 groundwater samples were collected from multiple depths at 15 locations. Permanent monitoring wells were installed at eight of the locations to monitor concentrations in the long-term. PCE was detected in seven of the eight monitoring wells at various concentrations. During the SI, Delaware's Division of Public Health—Office of Drinking Water sampled three municipal wells and confirmed low levels of groundwater contamination in the untreated/raw groundwater.

Based on the results of the SI, DNREC recommended additional investigation to help fully define the groundwater contaminant plume and identify potential source(s). EPA will continue to work with DNREC and the City to fully characterize the extent and impact of groundwater contamination and address potential long-term impacts.

Next Steps

EPA will use its Superfund authorities to see if the Site warrants further long-term investigation and cleanup. Further investigations may result in this Site being listed on the National Priorities List (NPL). The NPL indicates sites in the United States eligible for long-term remedial action (cleanup) financed under the Federal Superfund program. As part of the listing process, EPA will develop a Community Involvement Plan with the goal of keeping the community informed and involved in EPA's work at the Site. Potentially responsible parties that contributed to the contamination in the groundwater will also be identified to pay for the cleanup.

In the interim, EPA will evaluate the potential for vapor intrusion at the site. This investigation will examine if vapors from the shallow contamination in the groundwater are moving into nearby buildings, and determine if action is needed to protect human health and the environment.

For more information about EPA's Superfund program, please visit:

<https://www.epa.gov/superfund>

Contact Us

Gina Soscia
Community Involvement
Coordinator
EPA Region 3
215-814-5538
Soscia.gina@epa.gov

Connor O'Loughlin
Site Assessment Manager
EPA Region 3
215-814-3304
O'loughlin.connor@epa.gov

Timothy Ratsep
Administrator
DNREC Site Investigation
and Restoration Section
302-395-2600
Timothy.Ratsep@state.de.us

Christina Wirtz
Outreach Ombudsman
DNREC Division of Waste
and Hazardous Substances
302-395-2500
Christina.Wirtz@state.de.us

Linda Miller
State and Congressional
Liaison
EPA Region 3
215-814-2068
Miller.linda@epa.gov