

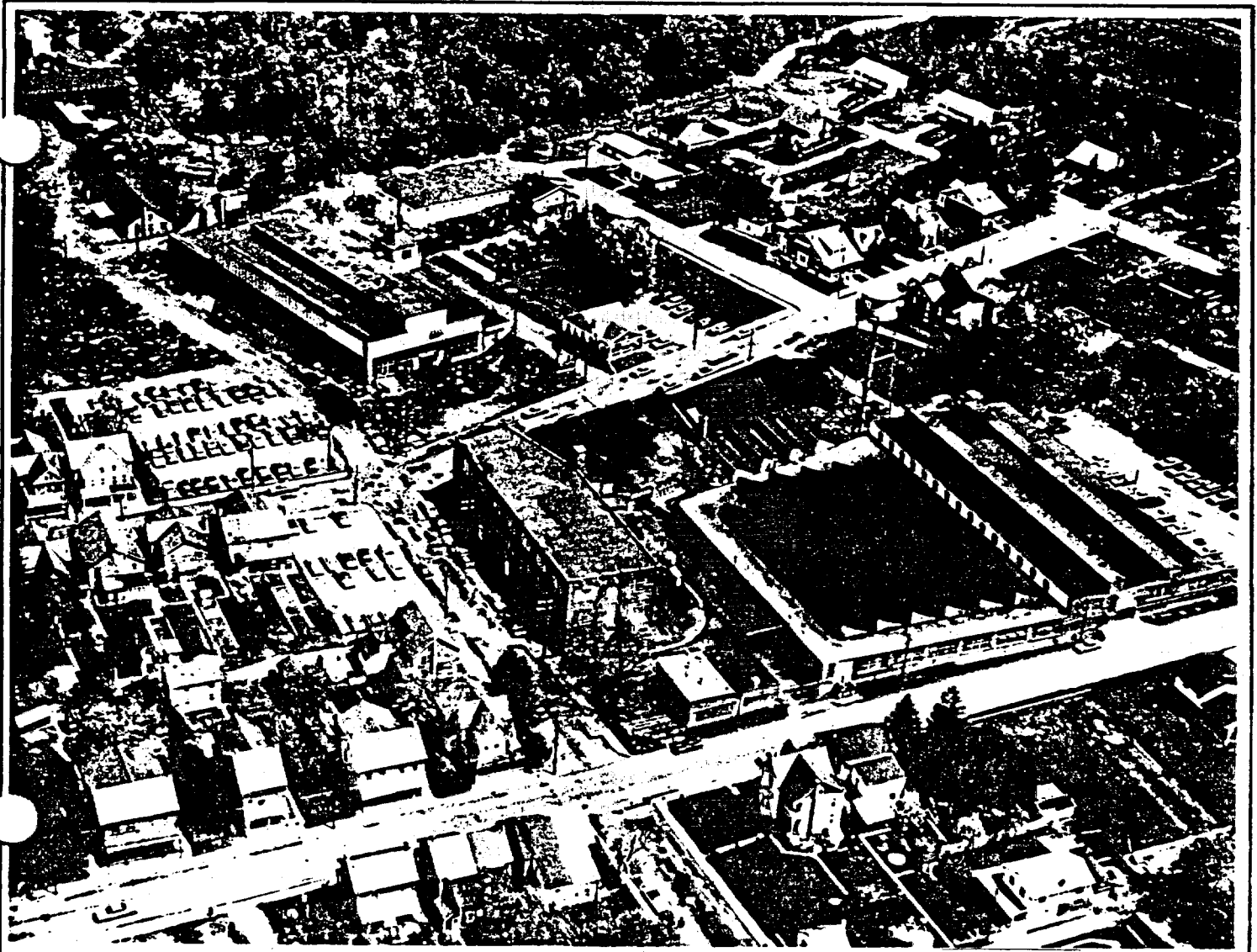
116134

NAL



# General Machine Corporation

Fourth & Furnace Streets  
Emmaus, Pennsylvania 18049  
Phone 215/965-9041



AR205232

## **WE WOULD LIKE YOU TO KNOW US BETTER**

General Machine Corporation, successor to General Machine Company, Inc., has spent more than 60 years developing a specialized line of products and services that have won wide acceptance by American industry and customers.

A wholly owned subsidiary of Belmont Industries, Inc., General Machine Corp. was founded in 1907 and located in Emmaus, Pennsylvania, in the central Lehigh Valley in 1940.

Today, General offers a complete line of domestic environmental comfort equipment as well as a wide service in designing, pattern making, casting, machining, sheet metal fabrication, painting, assembling and packaging. The products and services come from a manufacturing and warehousing facility occupying more than 160,000 square feet of floor space. But for the full General Machine story, we suggest you visit our facilities and see what more than 60 years of experience can mean for your needs.

## QUALITY ASSURANCES

When you contract for a General Machine Corporation service or product, you can be sure that our entire production and management facilities will be geared to one task—doing the job for you as perfectly, quickly and economically as we possibly can.

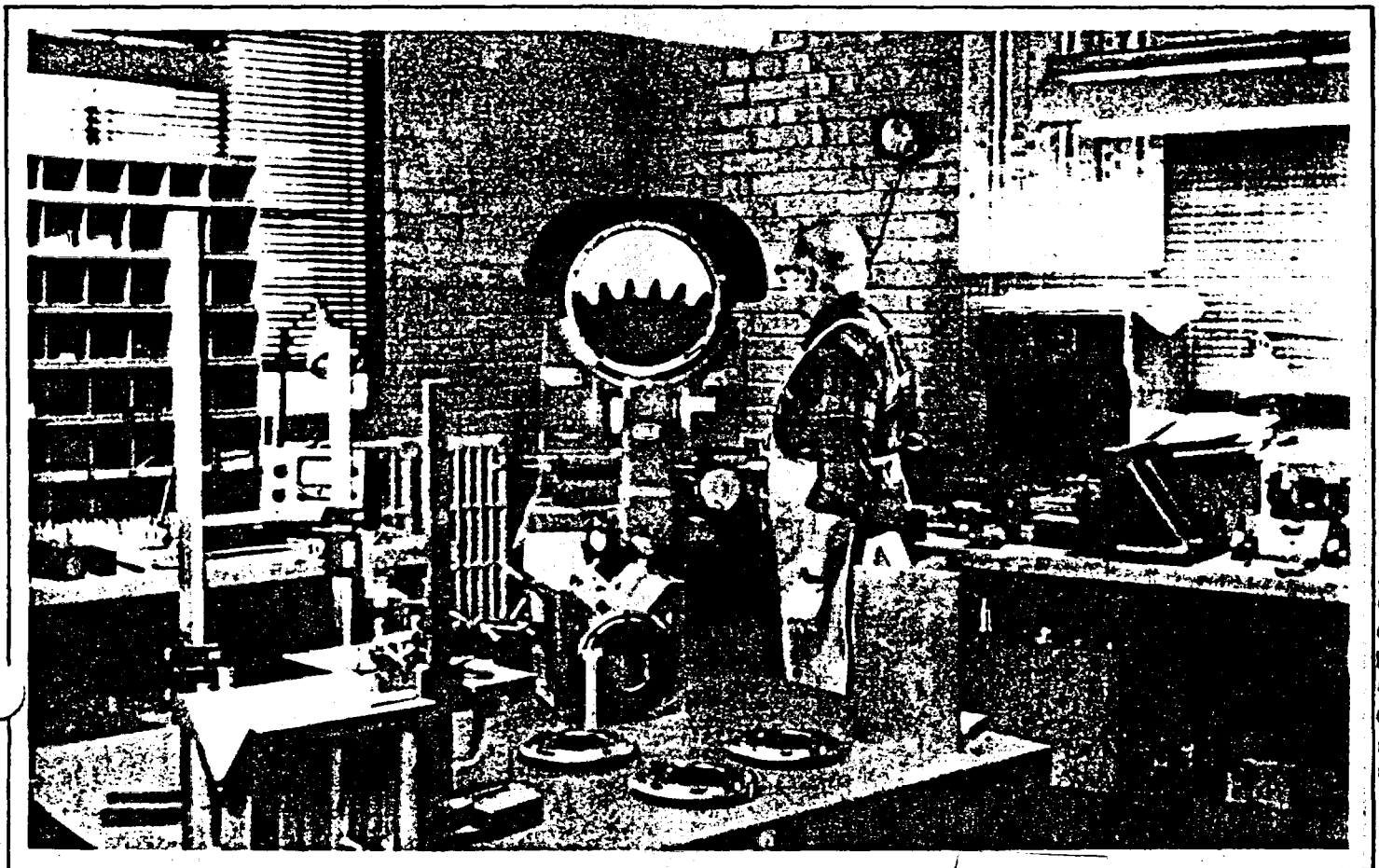
At General Machine, we take pride in the fact that our quality assurance facilities and personnel keep pace with the ever increasing demands of customer acceptance specifications. But a foundry and manufacturing center embodies more than just machines; it has at its heart a philosophy of quality workmanship that leaves a hallmark on all products and services.

At General Machine, we have developed

a tradition of excellence based on more than 60 years of quality workmanship. Our foundrymen and machinists still take pride in a job well done; that in simple words is the General Machine philosophy. Before a casting or heating unit or contract machined product leaves our plant, it must be approved by inspectors with a wide variety of experience; that is an unbreakable rule at General Machine. We have never compromised quality at General Machine.

Our services and products meet the exacting requirements of ASTM, ASME, U.L., and MIL-I-45208A.

From machines and people, we have forged a hallmark of quality at General Machine Corporation.



AR205234

## EMMAUS FOUNDRY AND MACHINE DIVISION

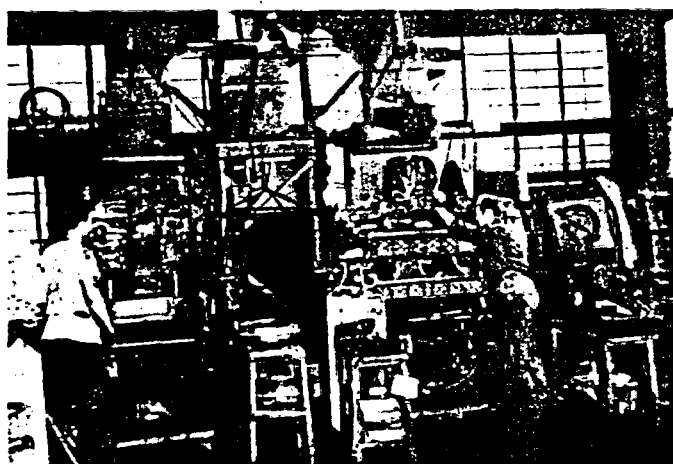
The Emmaus Foundry and Machine Division offers full gray and ductile iron casting services from the original design to a completely machined casting or assembly. In gray iron, Emmaus furnishes castings to 50,000 P.S.I. tensile strength and up to 1800 pounds in weight.

While gray iron has been in existence for several thousand years, ductile iron represents a new family of cast metals which combines the processing advantages of

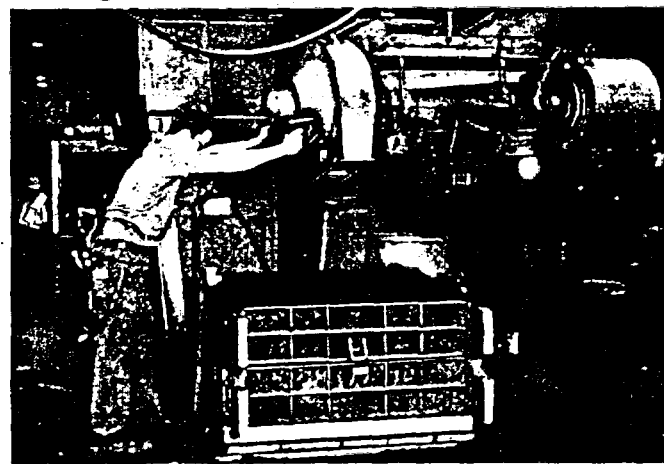
cast iron with many of the engineering advantages of steel, including high strength, toughness, ductility and hardenability.

Within ten years after the inception of ductile iron, Emmaus was licensed and producing ductile iron on a daily basis, making the grades 60-45-10, 60-45-15, 60-45-18, 80-60-03, 100-70-03, 120-90-02 and other special grades to the applicable A.S.T.M. and military specifications in weight range up to 1200 pounds.

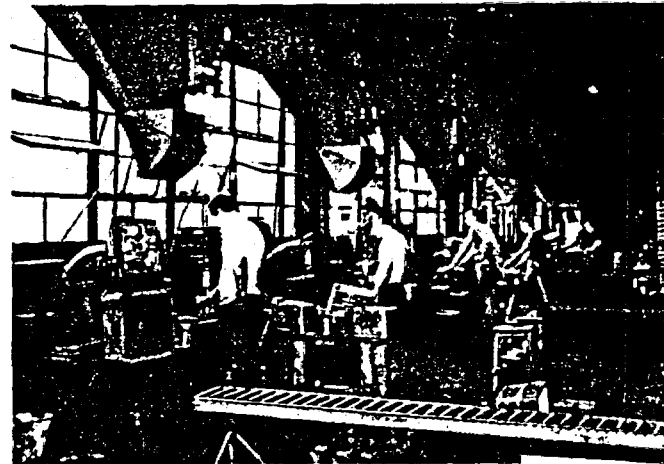
Rotolift Machines



Sand Slinger



One of Four Shell Core Machines



Jolt Squeeze Molding Line

AR205235

## FACILITIES

**Pattern Department**—Completely equipped for the development and construction of all sizes and types of wood and metal patterns.

**Core Department**—Where all the latest in coremaking is investigated and the best is used. Our cores are made by the following processes:

- (a). Oil Sand
- (b). Shell Core
- (c). Sodium Silicate—CO<sub>2</sub>
- (d). No Bake

### Molding Department

- (a). Jolt squeeze machines which handle up to 24" x 24" flasks.
- (b). Rotolift machines up to 20" x 48" flasks.

- (c). Rollover machines up to 60" x 60" flasks.
- (d). High speed sand slinger for larger miscellaneous size flasks.

Our most important asset is our "know how." A Foundry Engineer and a graduate Metallurgical Engineer are available to discuss and help solve your problems.

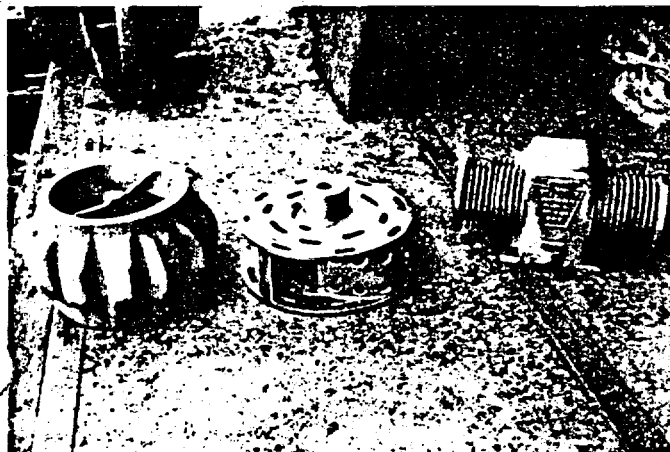
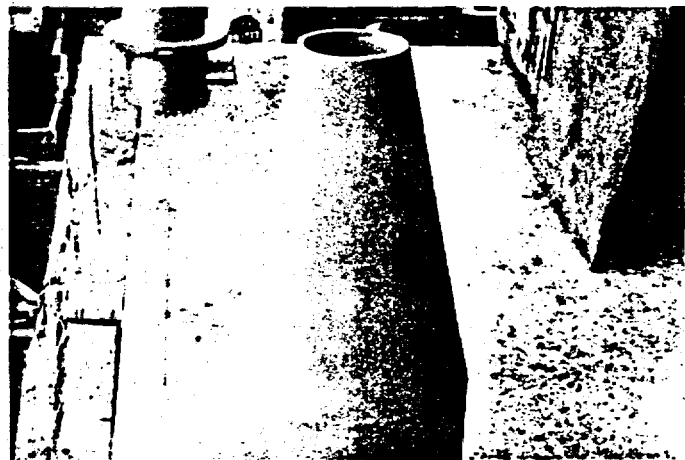
Skill, ingenuity and science are woven together to bring you castings that meet the finest tolerances for sand molds.

Built in 1947, Emmaus Foundry and Machine Division is one of the really modern foundries in the East. In the production of castings we have built a reputation for quality and exactness that has made Emmaus a major name in the foundry business in less than 25 years.

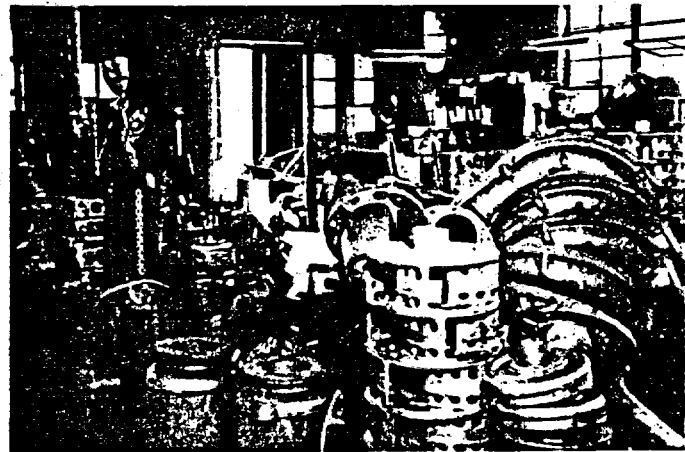
Jolt Pinlift and Rollover Molding Machines



A White Iron Precipitator Tube



Typical Castings



Typical Castings

ORIGINAL  
(Red)

## E-F-M DIVISION

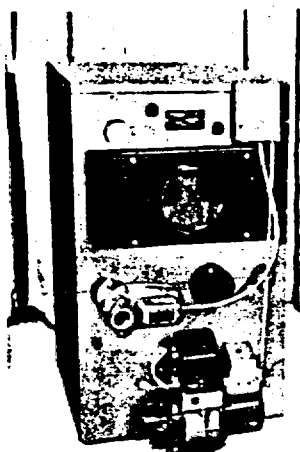
Electric Furnace-Man manufactures a complete line of automatic heating and cooling equipment noted for its dependability, long life and economy of operation. EFM heating equipment has its start in our Engineering and Drafting rooms where the latest in technological improvements are continually incorporated into each unit. Units are produced in one place—at our Emmaus shops—where there is no compromise with quality in the manufacturing process. Purchasers

are assured of obtaining a precision product at a realistic price without the risk of divided responsibility.

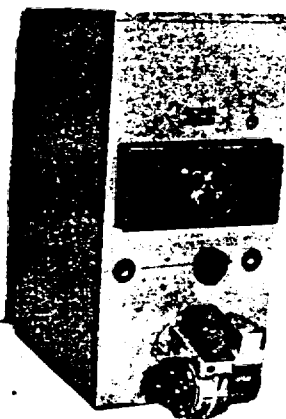
The reputation which Electric Furnace-Man has earned during the 48 years it has been in business is due to the high standards of quality and workmanship built into every unit—assuring the purchaser of carefree heating comfort for years after the initial investment has been forgotten.

Adding in no small measure to Electric

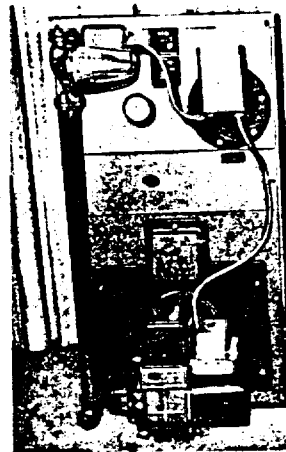
Steel Packaged Oil Boiler Unit



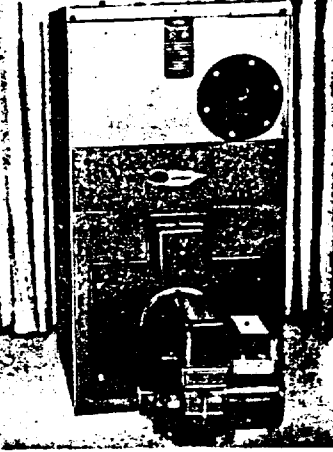
Steel Knocked-Down Oil Boiler Unit—Steam and Hot Water



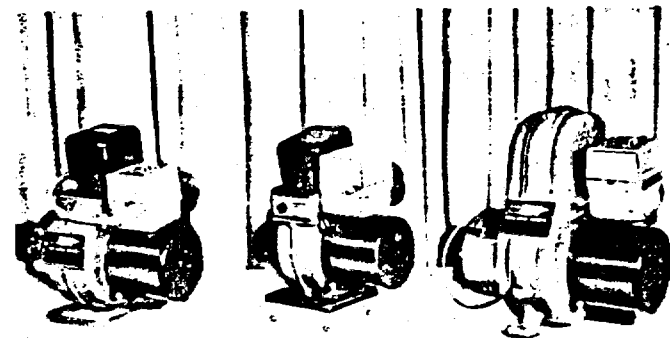
Cast Iron Oil Boiler Packaged Unit



Knocked-Down Cast Iron Oil Boiler Unit—Steam and Water



Warm Air High Boy Unit with Air Conditioning (Available for both Oil and Gas)



Conversion Oil Burners, .75 GPH to 7.0 GPH

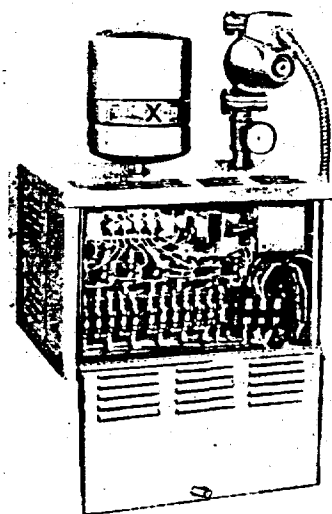
205237  
AR205237

ORIGINAL  
(Red)

Furnace-Man's reputation is the contribution which every EFM Dealer makes. The EFM line is sold and serviced by locally - established Franchised Dealers who are selected for their competence and integrity—further assurance that the purchaser's investment will be protected with prompt and skillful service availability for the many years that he can expect to use it.

The EFM equipment line consists of a complete range of units which constitute

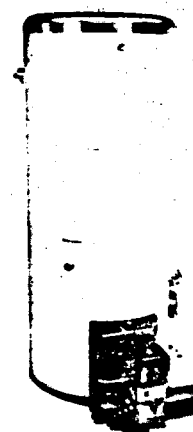
Total Indoor Comfort systems in the Environmental Control concept—Boilers and Furnaces for Oil, Gas and Electric Heating—Air Conditioning—Conversion Oil Burners, Oilfired Hot Water Heaters and Stoker/Boiler units. All embody and reflect the production skills and engineering know-how which Electric Furnace-Man has developed in its nearly half a century of manufacturing experience.



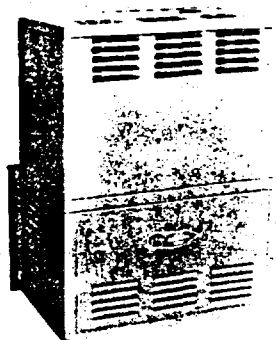
Electric Boiler Unit for Hot Water Systems. 10KW to 30 KW



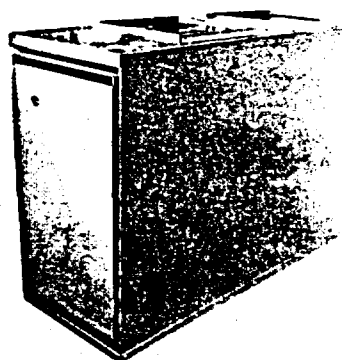
Packaged Gas Boiler Unit



Oil Fired Hot Water Heater



Electric Boiler with Extended Jacket



Low Boy Oil Warm Air Furnace—also available for Gas

205238  
AR205238

ORIGINAL  
(Red)

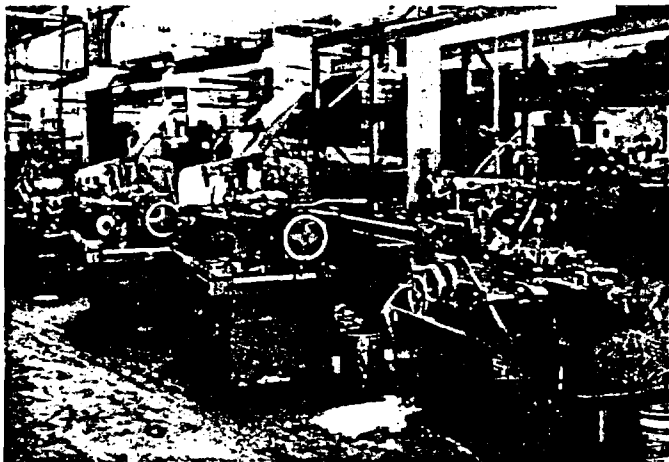
## GOVERNMENT, INDUSTRIAL AND MARINE DIVISION

Through General Machine's Government, Industrial and Marine Division, all facets of our operation are used for the production of specialized products for a wide variety of industrial users.

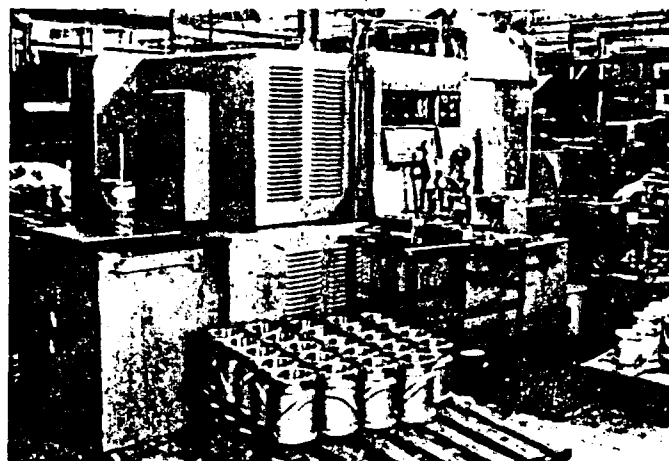
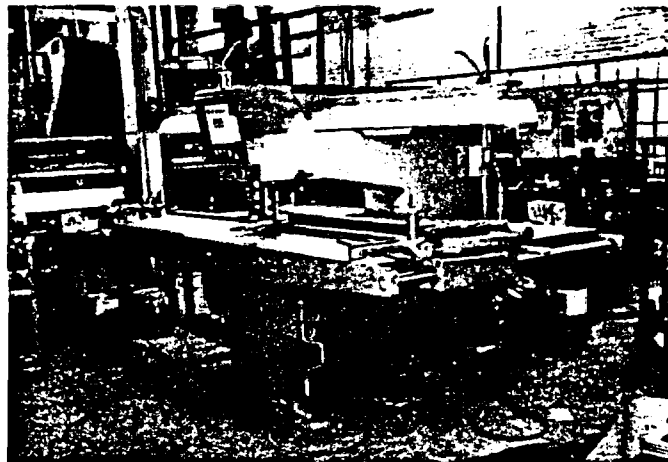
A modern manufacturing complex specializing in the latest finishing and testing techniques is available for start-to-finish development and construction. And the division also makes available to customers General Machine Corporation's expert

management and engineering teams to help you design the systems that will turn out your product better, faster and at less cost. The Government, Industrial and Marine Division offers a complete service including engineering, casting, machining, metal fabricating, welding, assembly, painting, packing and shipping—all from our Emmaus works, all carrying the General Machine tradition of quality workmanship.

B & S Automatic 1-1/2" Capacity



Whitney 30 Ton Capacity



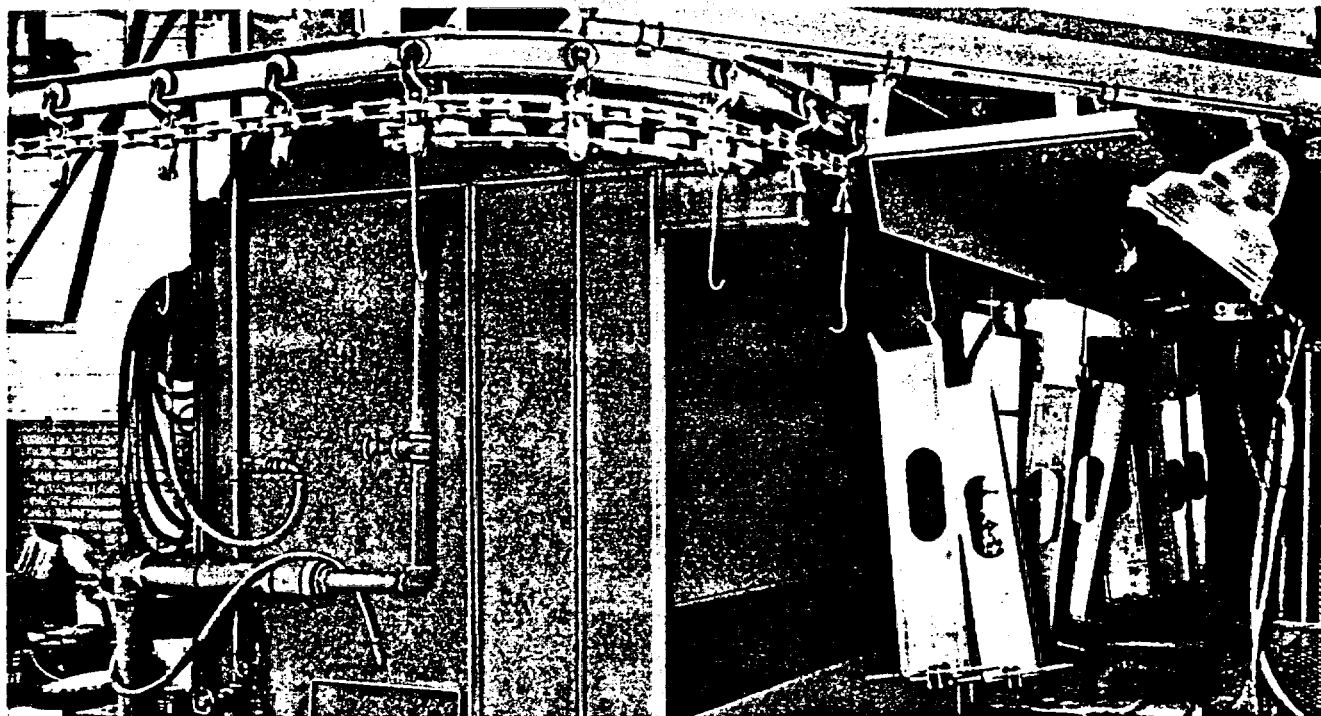
Automatic Chuckers 2 AC

205239

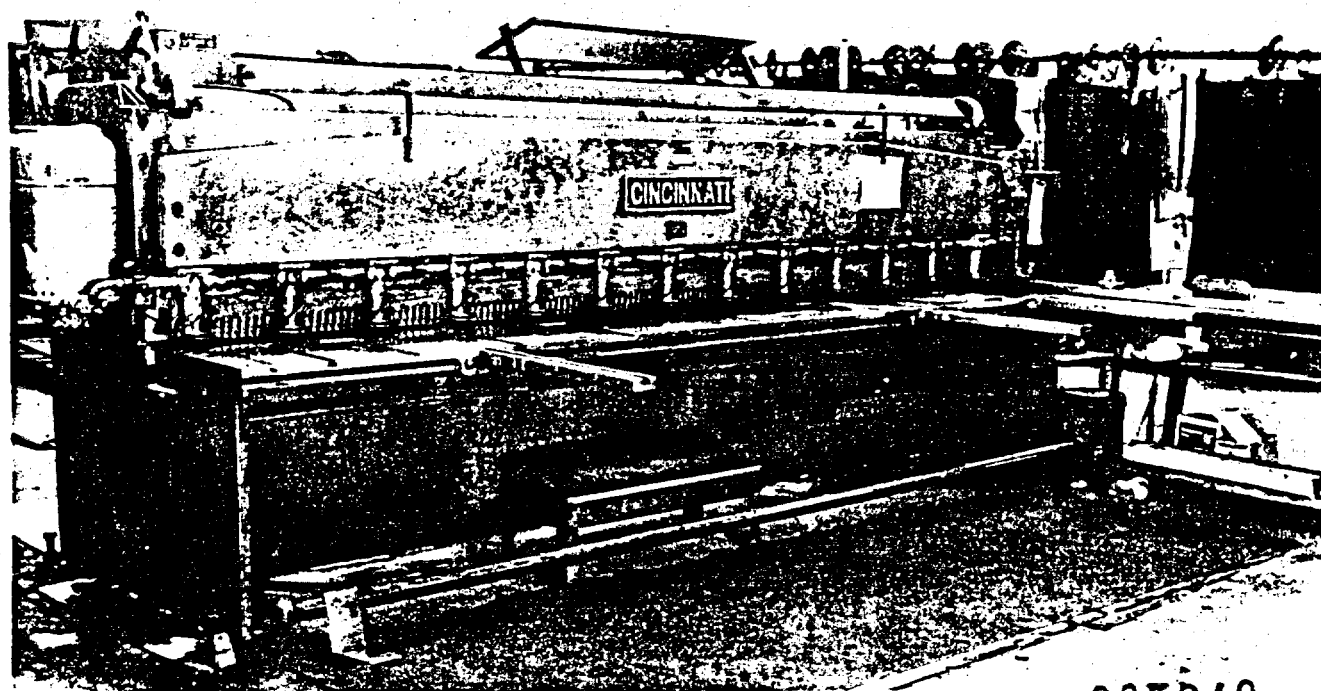
AR205239



ORIGINAL  
1 Reg

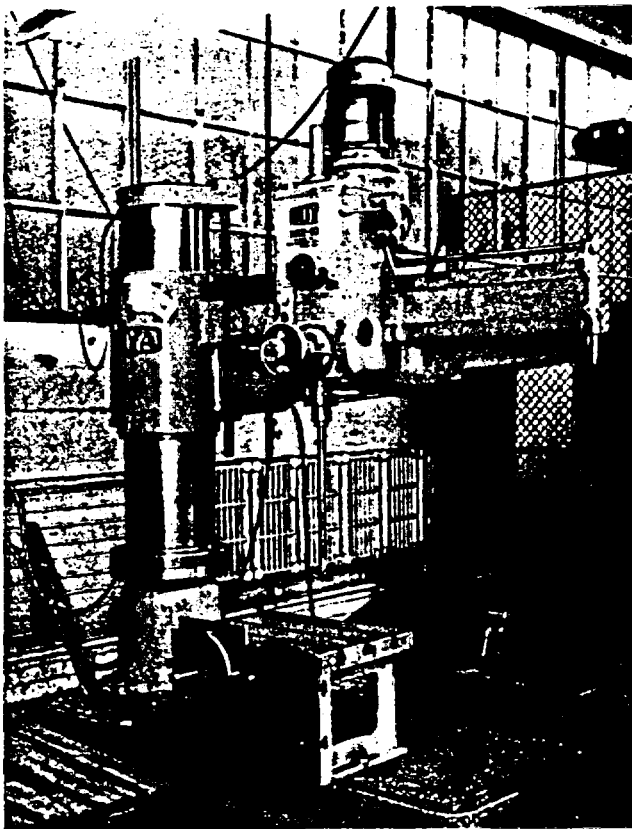


Modern Electrostatic Painting System

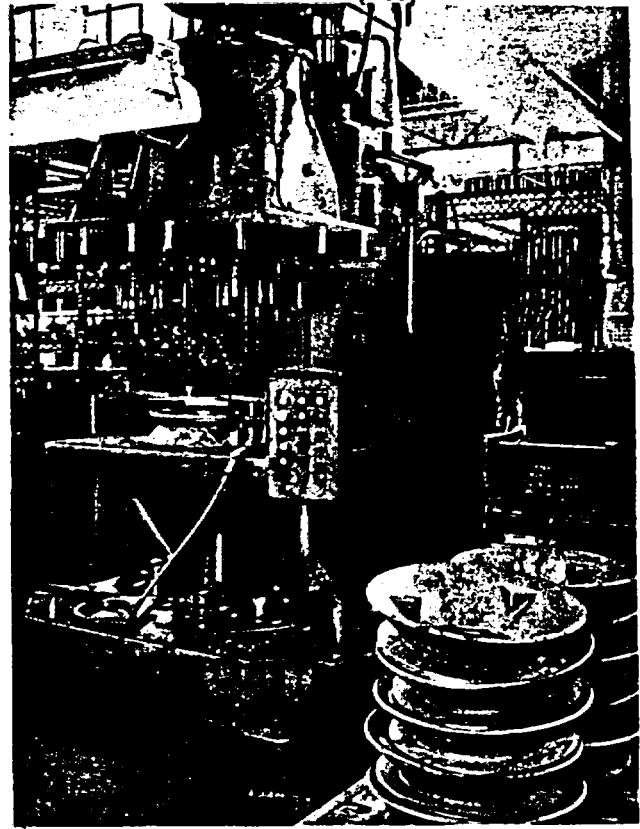


Shear Capacity 3/8" x 12' Mild Steel

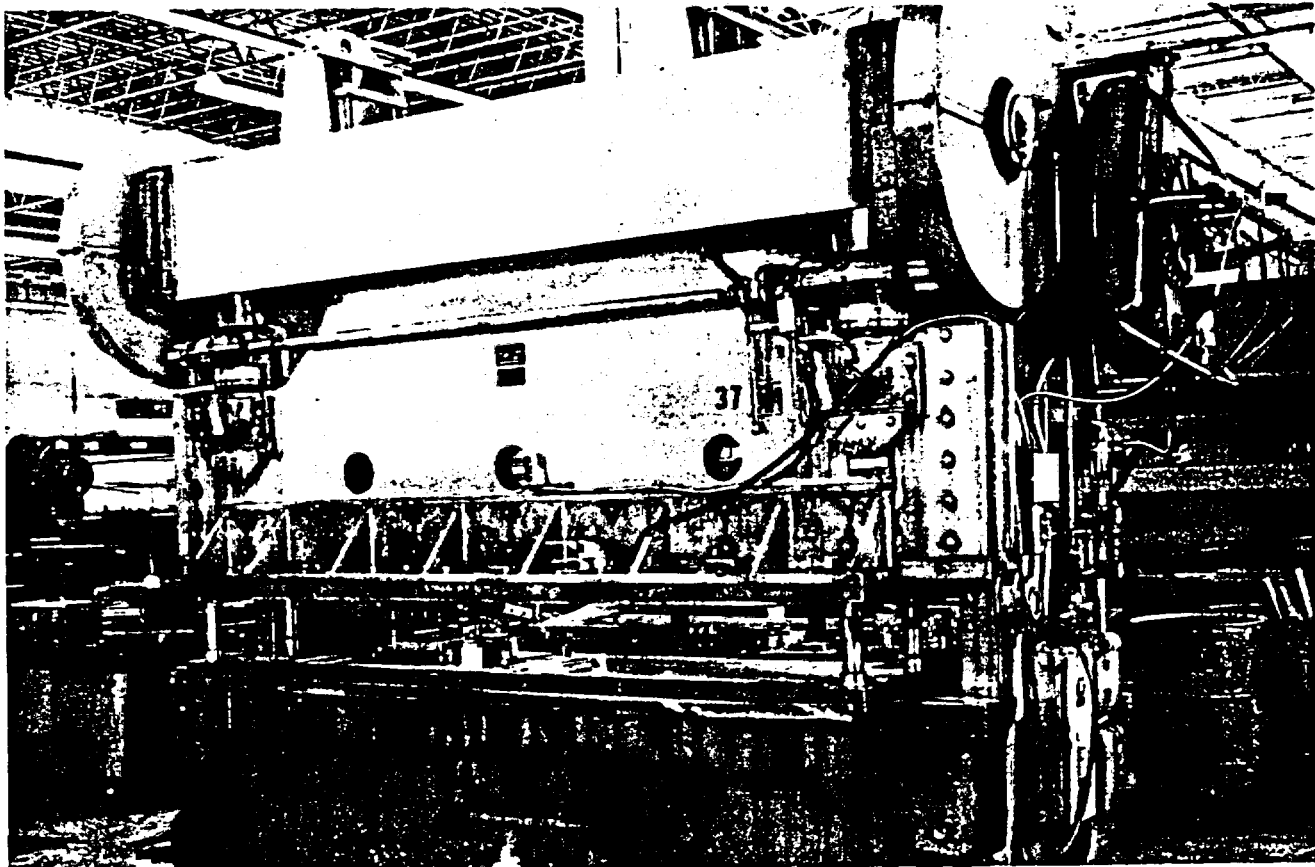
205240  
AR205240



Radial Drill Press



Natco 24 Spindle



Press Brakes 250 Ton

ORIGINAL  
(Red)

205241 AR205241

ORIGINAL  
(Red)

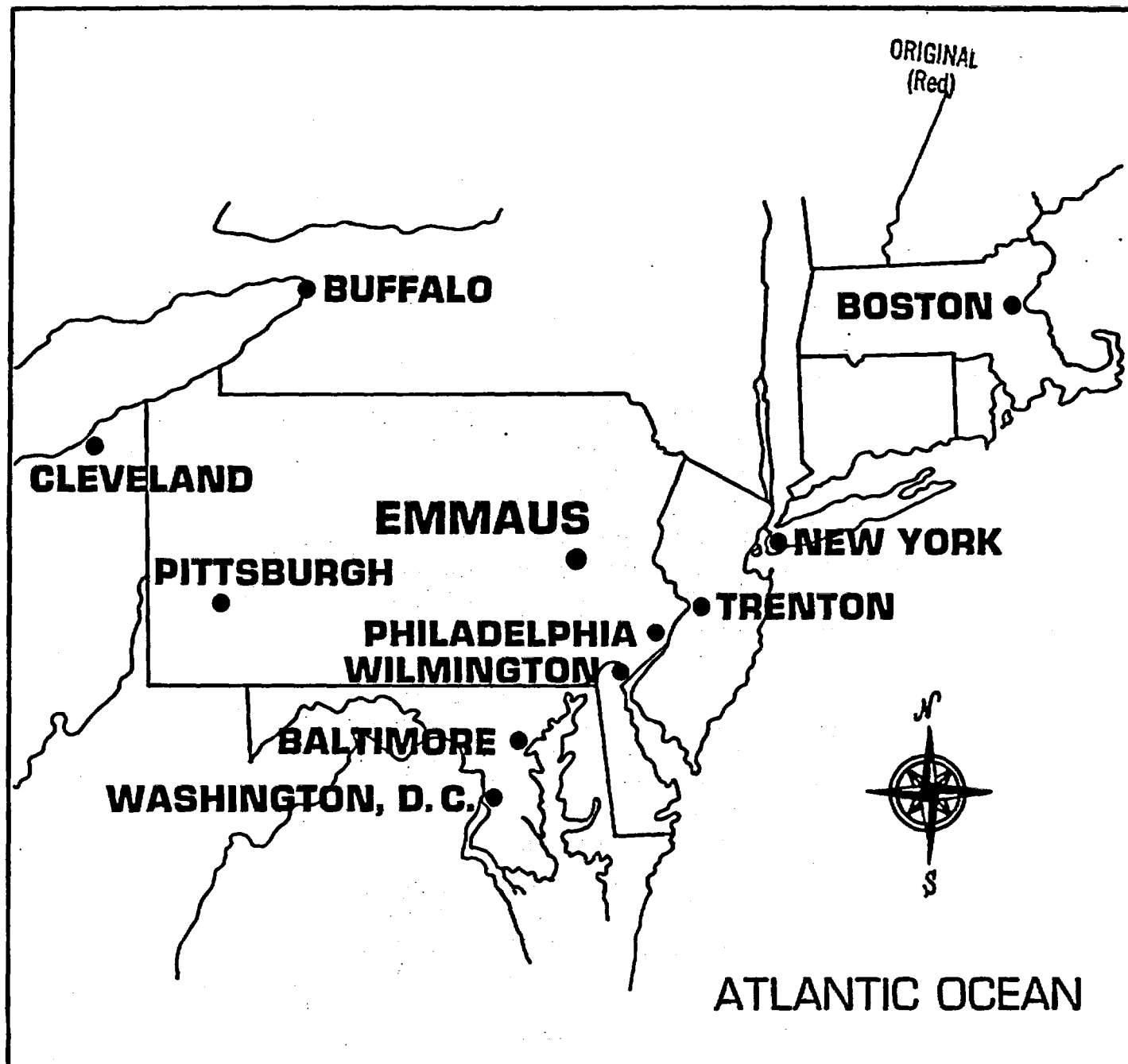
## BRING YOUR PROBLEM TO EMMAUS

Although we've tried to give you a brief but concise inside picture of the General Machine Corporation and its capabilities in this booklet, we realize only a visit to our shops could tell you our full story.

Visit Emmaus, in the middle of Eastern America's busy megalopolitan market, and take part in "shirt-sleeve seminars" with management and production experts. Watch how the General Machine team solves problems and then see if we can't use the same techniques on your own.

Or just write or call us and we'll be happy to send a representative to discuss your needs with you in your own plant. No matter how you do it, contacting the General Machine Corporation today could mean the answer to your production, casting or planning problems by tomorrow.

205242



**General  
Machine  
Corporation**

Fourth & Furnace Streets  
Emmaus, Pennsylvania 18049  
Phone 215/965-9041

205243