

SITE TRANSFER AGREEMENT

Between the U.S. Environmental Protection Agency, Region 2 and
the New Jersey Department of Environmental Protection
on behalf of the State of New Jersey
for
Transfer of Fund-Lead Remedial Action Responsibilities
to State-Lead Operation and Maintenance
for the Lipari Landfill Superfund Site
EPA ID. No. NJD980505416

I. Purpose

The purpose of this Site Transfer Agreement (“Agreement”) is to document the orderly transfer of responsibilities from the United States Environmental Protection Agency’s Fund-lead remedial action to New Jersey’s State-lead operation and maintenance (“O&M”) of the remedy selected in an August 3, 1982, September 30, 1985, and July 11, 1988 Records of Decision (“RODs”) and for the Lipari Landfill Superfund site in the Town of Mantua, Gloucester County, New Jersey (the “Site”) as modified by Explanations of Significant Differences (“ESDs”) signed on June 15, 1992, June 7, 1993 and September 29, 2017.

II. Definitions

A. “CERCLA” shall mean the Comprehensive Environmental Response, Compensation, and Liability Act of 1980, as amended, 42 U.S.C. §§ 9601, *et. seq.*

B. “EPA” shall mean the United States Environmental Protection Agency and any successor departments or agencies of the United States.

C. “Long-Term Response Action” or “LTRA” for the purposes of this agreement shall mean the period between the date that EPA determines the Site remedy is Operational and Functional, and the date of the start of operation and maintenance.

D. “NJDEP” shall mean the New Jersey Department of Environmental Protection and any successor departments or agencies of the State.

E. “Operation and Maintenance” or “O&M” shall mean the period of remediation, maintenance and monitoring required to be performed and funded by the State if the Remedial Action Objectives have not been achieved at the completion of the LTRA.

F. “Remedial Action” shall mean those activities, other than operation and maintenance, undertaken for the purpose of implementing the remedy selected in EPA’s RODs for the Site as modified by the three ESDs.

G. “Remedial Action Objectives” shall mean the specific goals for protecting human health and the environment set forth in EPA’s RODs for the Site.

H. “Lipari Landfill Site” or “Site” shall mean the Lipari Landfill Superfund site, which is located in Town of Mantua, Gloucester County, New Jersey (See Figure 1 attached as Appendix A).

I. “State” shall mean the State of New Jersey, including its agencies, departments and instrumentalities.

J. “Transfer Date” shall mean August 14, 2019.

III. Background

Section 104(c)(3) of CERCLA, 42 U.S.C. §9604(c)(3) requires a state to assure all future maintenance of a remedial action provided for the expected life of such action. Section 104(c)(6) of CERCLA, 42 U.S.C. § 9604(c)(6), further defines when EPA’s Fund-lead remedial action ends and the State-lead O&M begins for ground or surface water restoration measures.

Section 300.435(f)(3) of the National Oil and Hazardous Substances Pollution Contingency Plan (“NCP”), 40 CFR § 300.435(f)(3), states “For Fund-financed remedial actions involving treatment or other measures to restore ground- or surface-water quality to a level that assures protection of human health and the environment, the operation of such treatment or other measures for a period of up to 10 years after the remedy becomes operational and functional will be considered part of the remedial action. Activities required to maintain the effectiveness of such treatment or measures following the 10-year period, or after the remedial action is complete, whichever is earlier, shall be considered O&M.” The State is responsible for O&M. This document describes the respective tasks required of EPA and the State to transfer the Site from LTRA to O&M.

This Agreement is entered into in accordance with CERCLA and the NCP. Any deviation from the requirements of CERCLA and the NCP, which are either stated or implied by this Agreement, shall be null and void. This document is also intended to be in accordance with EPA and NJDEP guidance documents.¹

IV. Transfer Agreement

A. Applicability. This Agreement applies only to the Lipari Landfill Superfund site.

B. Site History. The Site was a Fund-financed National Priorities List (“NPL”) site. Three separate RODs for three operable units were issued for the Site: the 1982 ROD for Operable Unit 1 (“OU1”); the 1985 ROD for Operable Unit 2 (“OU2”), as modified by a 1986 clarification letter and 1992 ESD; and the 1988 ROD for Operable Unit 3 (“OU3”), as modified by a 1993 ESD. The OU1, OU2 and OU3 RODs were modified by a 2017 ESD. In January 1992, EPA completed construction of the one building located on-site, the groundwater treatment plant. EPA selected a remedy to stop pollutants from migrating from the landfill by constructing a landfill containment system consisting of an underground cut-off wall around the area and a synthetic membrane cover over the landfill surface. EPA completed the final cut-off wall and landfill cap in 2012. EPA installed landfill injection and extraction wells to capture groundwater, leachate and soil vapor for treatment. Optimization operations of the wells and treatment plant were completed in 1993. In 1995, EPA completed the off-site groundwater, soil and sediment contamination that was not secured in the landfill containment system. In 2008,

¹ “*Transfer of Long-Term Response Action (LTRA) Projects to States*”, OSWER Directive 9355.0-81FS-A, July 2003, EPA 540-F-01-021; and “*Operation and Maintenance in the Superfund Program*”, OSWER 9200.1-37FS, May 2001, EPA 540-F-01-004.

landfill flushing and on-site aqueous pre-treatment were discontinued. The on-site dual phase extraction-soil vapor extraction (“DPE-SVE”) and treatment system continues to operate solely in the vapor phase. Contaminants in the airstream from the DPE-SVE are removed by the vapor granular activated carbon units (“VGAC”). Upgrades and testing of the VGAC system were completed in 2015.

C. Funding and Performance of O&M. Since transfer of the Site to the State, the State has been solely responsible for funding O&M activities, and ensuring performance of the O&M. Nothing herein shall supersede the provisions of the Superfund State Contract for the Site and amendments thereto.

D. Transfer Schedule. The State and EPA agreed to implement the transfer of responsibilities for O&M of the Remedial Action from EPA to the State. The State commenced O&M responsibilities on the Transfer Date.

E. Transfer of Records. EPA provided necessary Site-related documents, which may not have been in the State’s possession, to the State on or before the Transfer Date.

F. Reporting. Upon request by EPA, the State will submit any prepared reports or data to EPA.

G. Five-Year Review Reports. The State will cooperate with EPA’s Five-Year Review efforts.

H. Training. The State may request EPA to provide transition training to State employees, consultants and/or contractors who will be involved with O&M at the Site and who are designated by NJDEP.

I. EPA-Owned Property and Equipment. EPA-owned property and equipment associated with the Remedial Action at the Site is identified on the Equipment Disposition List attached hereto as Appendix B. All such equipment and property was transferred to the State on the Transfer Date. Upon such transfer, full title to all items identified on the Equipment Disposition List was granted to the State. EPA will have no further responsibility for such property or equipment. Attached as Appendix C is a determination by the EPA Region 2 Property Officer.

J. Community Involvement. EPA has informed the Township Clerk’s office that the State has assumed primary responsibility for the Site.

V. Change of Site Status

A. Shutdown and Closure of Remedial Action and/or the Site. The Remedial Action is considered complete when monitoring indicates that the remedy has fully achieved the Remedial Action Objectives identified by the RODs or any modifications or amendments thereto.

In witness whereof, the parties hereto have executed this Agreement for transfer of responsibility from Fund-lead Remedial Action to State-lead Operation and Maintenance for the Lipari Landfill Superfund site in two (2) copies, each of which shall be deemed an original.

FOR THE UNITED STATES ENVIRONMENTAL PROTECTION AGENCY

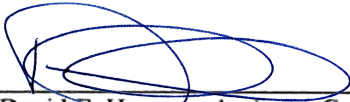
Pat Evangelista

Digitally signed by Pat
Evangelista
Date: 2024.01.30 14:23:58 -05'00'

Pat Evangelista, Acting Director
Superfund & Emergency Management Division

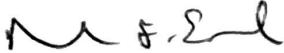
DATE

FOR THE STATE OF NEW JERSEY



David E. Haymes, Assistant Commissioner
Contaminated Site Remediation and Redevelopment
New Jersey Department of Environmental Protection

February 2, 2024
DATE

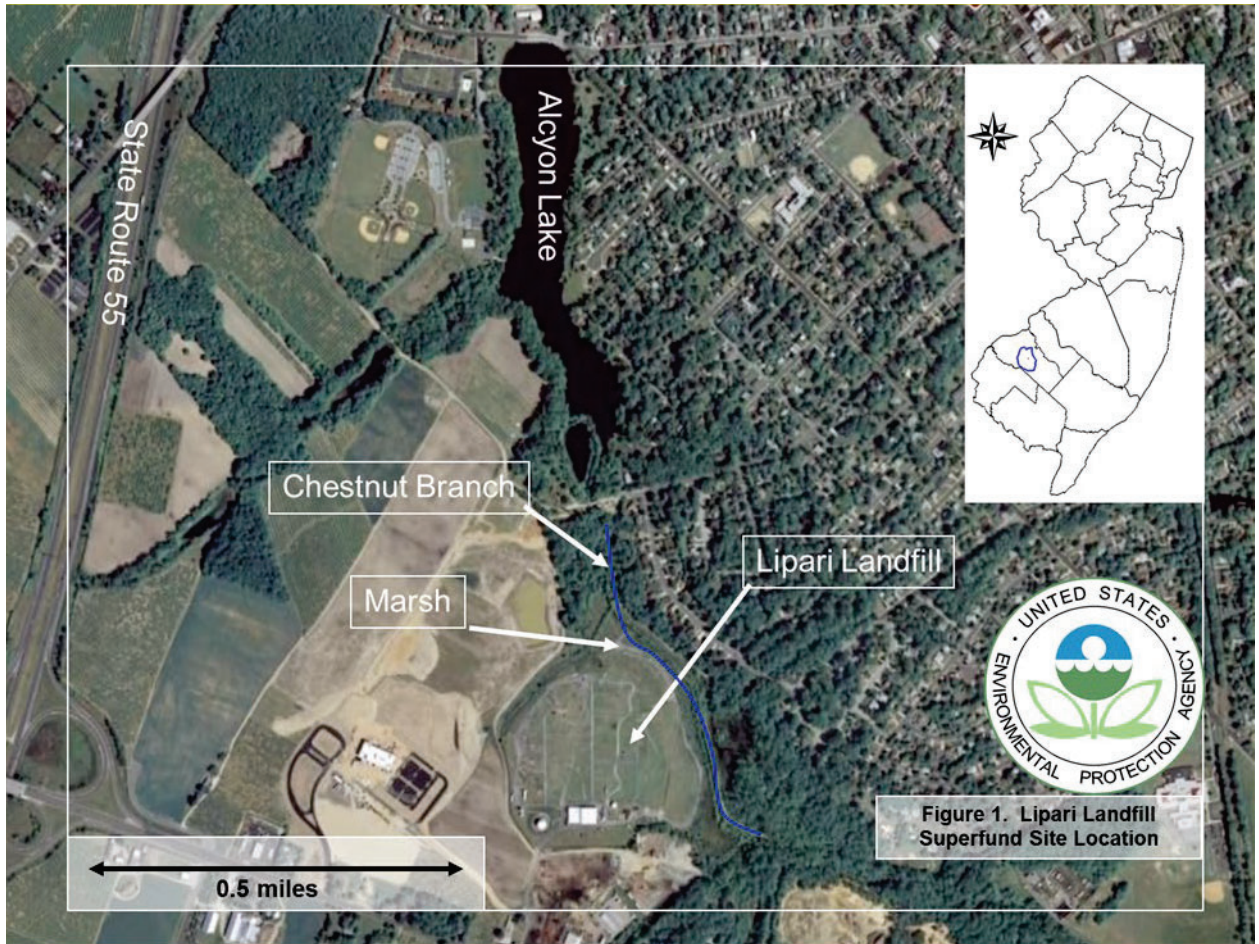


Approved as to Legality and Form
ATTORNEY GENERAL OF NEW JERSEY
RICHARD F. ENGEL, DAG

2-1-2024
DATE

Appendix A

Figure 1: Lipari Landfill Superfund Site Location Map



Appendix B

Maintenance/Operations Tool Inventory					
ITEM	ID #	NAME/DESCRIPTION	MANUFACTURE/SERIAL #	COMMENTS	Location
1	A57041	MEGGER	BIDDLE	Functional	Cabinet
2	A57042	AMPROBE RECORDER	AMPROBE	Functional	Cabinet
3	A57043	TIC-TRACER	AMPROBE	Functional	Cabinet
4	A57047	SAWZALL	MILWAUKEE	Functional	Overhead Gang box
5	A57050	3/16-9/16" 1/4" DRIVE SOCK. SET	CRAFTSMAN	Functional	Tool box
6	A57051	3/8" TORQUE WRENCH	PROTO	Functional	Overhead Gang box
7	A57052	TAP AND DIE, INCOMPLETE SET	IMPERIAL	Functional	shelving
8	A57053	4-13mm 1/4" DRIVE SOCK. SET	COMPANION	Functional	Tool box
9	A57054	3/8" TUBING BENDER	RIDGID	Functional	Tool box
10	A57055	RIDGID TUBING CUTTER	#152	Functional	Tool box
11	A57056	RIDGID TUBING CUTTER	#20	Functional	Tool box
12	A57057	1/4" TUBING BENDER	RIDGID	Functional	Tool box
13	A57058	AIR GRINDER	GRABTIM	Functional	Tool box
14	A57059	AIR GRINDER	GRABTIM	Functional	Tool box
15	A57060	VICE GRIP, 2 PIECES	CRAFTSMAN	Functional	Tool box
16	A57062	JIG SAW	SKIL	Functional	Tool box
17	A57064	OILER	RIDGID #318	Functional	Shop
18	A57066	JOB BOX	KNACK JM60	Functional	Shop
19	A57124	WOOD HAND SAW	STANLEY	Functional	Shop
20	A57125	TREE HAND SAW	CRAFTSMAN	Functional	Shop
21	A57127	WELDING HELMET	LINCOLN	Functional	Shop
22	A57129	BOX WRENCH 6 PIECE SET	PROTO	Functional	Tool box
23	A57130	2' LEVEL	STANLEY	Functional	Shop
24	A57133	MAG. BASE	STARRETT	Functional	Cabinet
25	A57134	DIAL INDICATOR	STARRETT	Functional	Cabinet
26	A57135	UNIV. INDICATOR HOLDER	STARRETT	Functional	Cabinet
27	A57136	ENGINEERS GAUGE	STARRETT	Functional	Cabinet
28	A57139	TELEPHONE PLUG KIT	PALADIN	Functional	Cabinet
29	A57140	3/4" x 1" TORQUE WRENCH	PROTO	Functional	Overhead Gang box
30	A57141	DIAL CALIPER	EMPIRE	Functional	Cabinet
31	A57143	18" PIPE WRENCH	RIDGID	Functional	Shop
32	A57144	18" PIPE WRENCH	RIDGID	Functional	Shop
33	A57145	ANGLE GRINDER	MAKITA	Functional	Shop
34	A57146	CIRCUIT TRACER	AMPROBE	Functional	Cabinet

35	A57147	SHEET METAL SHEER	KETT	Functional	Tool box
36	A57148	HAMMER DRILL	HILTI TE-22	Functional	Overhead Gang box
37	A57151	PORTABLE BAND SAW	PORTER CABLE 268952	Functional	Overhead Gang box
Maintenance/Operations Tool Inventory					
ITEM	ID #	NAME/DESCRIPTION	MANUFACTURE/SERIAL #	COMMENTS	Location
38	A57152	ELECT. PIPE THREADER	RIDGID 700	Functional	Gang box
39	A57153	ELECT. PIPE THREADER	RIDGID 700	Functional	Gang box
40	A57155	HYDRAULIC PUNCH KIT	GREENLEE	Functional	Overhead Gang box
41	A57157	CHAIN WRENCH	RIDGID	Functional	Tool box
42	A57159	3/8 DRIVE ELECTRIC DRILL	DEWALT	Functional	Shop
43	A57162	TORCH	BERNZOMATIC	Functional	Cabinet
44	A57163	STRAP WRENCH	RIDGID	Functional	Tool box
45	A57164	STRAP WRENCH	RIDGID	Functional	Tool box
46	A57165	OIL CAN	BROOKINS 104	Functional	Shop
47	A57167	PORTABLE GFCI OUTLET	WOODHEAD	Functional	Shop
48	A57168	CARPENTERS HAND CART	PERRY	Functional	Shop
49	A57169	HAND CART	PERRY	Functional	Shop
50	A57171	2" SUMP PUMP	Tsunami	Functional	Shop
51	A57172	GASKET CUTTER	ALLPAX	Functional	Cabinet
52	A57177	HAND TRUCK	WESCO	Functional	Shop
53	A57178	HAND TRUCK	MILWAUKEE	Functional	Shop
54	A57179	PORTABLE AIR TANK	CRAFTSMAN	Functional	Shop
55	A57184	O-RING SET	BUNA-N	Functional	Cabinet
56	A57184B	O-RING SET	VITON	Functional	Cabinet
57	A57185	O-RING MAKER	STERLING	Functional	Cabinet
58	A57186	BOLT CUTTER	HK PORTER	Functional	Shop
59	A57189	DRILL PRESS VISE	CROSS	Functional	Shop
60	A57190	FORMAN'S BOX	KNAACK	Functional	Shop
61	A57191	JOB BOX	KNAACK	Functional	Shop
62	A57192	OXYGEN ACETYLENE TORCH	ESAB	Functional	Shop
63	A57204	JOB BOX	KNAACK	Functional	Shop
64	A57205	DRILL PRESS	DAYTON	Functional	Shop
65	A57207	WEED WACKER	ECHO	Functional	Shop
66	A57209	ELECTRIC HEATER	POWER CAT	Functional	Shop
67	A57210B	GENERATOR, Emergency Back-up	POW-R GUARD TS75II	Functional	Shop
68	A57213	REFLECTOR DRIVE TOOL		Functional	Storage Trailer

69	A57214	TRAILER	CAM SUPERLINE	Functional	Onsite
70	AWD1	2" GASOLINE POWERED PUMP	HONDA WD20X	Functional	Shop
71	AWD2	PRESSURE CALIBRATOR	RS DGP-720A	Functional	Shop
72	B57001	SAMPLE BOMB		Functional	Cabinet
73	B57002	PORTABLE WORK BENCH	WORKMATE	Functional	Shop
74	B57003	SPREADER	SCOTTS	Functional	Shop

Maintenance/Operations Tool Inventory

ITEM	ID #	NAME/DESCRIPTION	MANUFACTURE/SERIAL #	COMMENTS	Location
75	B57004	BASIN WRENCH	PROTO	Functional	Tool box
76	B57005	4" PIPE THREADER	RIDGID	Functional	Gang box
77	B57012	WHEEL CHOCKS		Functional	Onsite
78	B57017	POLY TANKS	1000 300 100	Functional	Onsite
79	B57018	18"PIPE WRENCH	RIDGID	Functional	Shop
80	B57019	36" PIPE WRENCH	RIDGID	Functional	Shop
81	B57021	MANOMETER	DWYER	Functional	Cabinet
82		KYNAR FUSION TOOL	MODEL 182	Functional	Cabinet
83		BANDING TOOL	BAND-IT	Functional	Cabinet
84		MASONARY DRILL BITS	SER. 967347	Functional	Overhead Gang box
85		METRIC WRENCHES	SNAP-ON	Functional	Tool box
86		METRIC 1/2" DRIVE SOCKETS	SNAP-ON	Functional	Tool box
87		PIPE, STUD AND SCREW EXT.	Walton	Functional - Missing two pieces	Tool box
88		SUBMERSIBLE PUMP	MYERS 1/2 HP	Functional	Shop
89	C1.11	HYDRAULIC JACK	JET JSJ-5M	Functional	Shop
90	C1.13	JACK STANDS	JET	Functional	Shop
91	C1.14	PEDESTAL MOUNTED GRINDER	JET JBG-10A	Functional	Shop
92	C1.15	10" DRILL PRESS	JET JDP-20MF	Functional	Shop
93	C1.16	6" BENCH VISE	WILTON	Functional	Shop
94	C1.17	SOLID JAW VISE	YOST	Functional	Shop
95	C1.18	1/2" DRILL	DEWALT	Functional	Shop
96	C1.19	3/8-3/4" RATCHET WRENCH SET	CRAFTSMAN	Functional	Tool box
97	C1.20	CIRCULAR SAW	DEWALT	Functional	Overhead Gang box
98	C1.23	12 DRAWER TOP CHEST	PROTO	Functional	Shop
99	C1.24	9 DRAWER ROLLER CABINET	PROTO	Functional	Shop
100	C1.25	5 DRAWER ROLLER CABINET	PROTO	Functional	Shop
101	C1.26	SLEDGE HAMMER	8 LB., 16 LB.	Functional	Shop
102	C1.27	CROWBAR	18 lb. Pinch & Wedge	Functional	Shop

103	C1.28	DIGGING BAR	WARWOOD 16 LB. 69"	Functional	Shop
104	C1.31	TRENCHING PICK WITH HANDLE	KELLER TOOL 3221F	Functional	Shop
105	C1.32	SPADE SHOVEL	48"	Functional	Shop
106	C1.33	SNOW BLOWER	5HP HOMELITE	Functional	Storage Trailer
107	C1.35	WET/DRY VAC.	CRAFTSMAN	Functional	Shop
108	C1.37	GAS CAN, 5 Each	EAGLE SAFETY CAN	Functional	Flammable Cabinet
109	C1.38	OILY WASTE CAN, 5 Each	EAGLE SAFETY CAN	Functional	Plant
110	C1.39	WORK BENCHES, 5 each	LYON	Functional	Shop
111	C1.4	DRAIN CLEANER	RIDGID	Functional	Storage Trailer

Maintenance/Operations Tool Inventory

ITEM	ID #	NAME/DESCRIPTION	MANUFACTURE/SERIAL #	COMMENTS	Location
112	C1.40	ALUMINUM EXTENSION LADDER	DEALERS SERVICE 36'	Functional	Shop
113	C1.41	FIBERGLASS LADDER	WERNER 10' "A" FRAME	Functional	Shop
114	C1.42	FIBERGLASS LADDER	WERNER 6' "A" FRAME	Functional	Shop
115	C1.43	STAIR SCAFFOLDING, 1 SET	BIL-JAX	Functional	Onsite
116	C1.44	PIPE VISE	RIDGID TRI-STAND	Functional	Shop
117	C1.6	DRUM CART, 2 EACH	SERIES 75	Functional	Plant
118	C1.7	DRUM AND BARRELL CRADLE, 2 EACH	51-H-IW	Functional	Plant
119	C1.8	PLATFORM TRUCK	DAYTON 3W216A	Functional	Plant
120	C2.10	FLARE NUT WRENCH 2 PIECE SET	PROTO	Functional	Tool box
121	C2.11	OPEN END WRENCH 5 PIECE SET	PROTO	Functional	Tool box
122	C2.12	CURVED BOX WRENCHES, 2 PIECE SET	PROTO	Functional	Tool box
123	C2.13	FOLDING HEX BIT SET	HUSKY	Functional	Tool box
124	C2.15	3/8" DRIVE SOCKET 54 PIECE SET	PROTO	Functional	Tool box
125	C2.16	3/8" DRIVE SOCKET 9 PIECE SET	PROTO	Functional	Tool box
126	C2.18	1/2" DRIVE SOCKET 61 PIECE SET	PROTO	Functional	Tool box
127	C2.2	DRILL BITS	CRAFTSMAN	Functional	Tool box
128	C2.20	3/4" DRIVE SOCKET 30 PIECE SET	PROTO	Functional	Tool box
129	C2.24	3/4" DRIVE X 1" DRIVE ADAPTOR	PROTO	Functional	Tool box
130	C2.25	1/2" DRIVE TORQUE WRENCH	PROTO	Functional	Tool box
131	C2.28	10" ADJUSTABLE WRENCH	PROTO	Functional	Tool box
132	C2.29	12" ADJUSTABLE WRENCH	PROTO	Functional	Tool box
133	C2.3	NON-SPARKING TOOLS 8 PIECE SET	BERYLCO SAFETY TOOLS	Functional	Tool box
134	C2.30	9" PLIERS	PROTO	Functional	Tool box
135	C2.31	6" COMBINATION PLIERS	PROTO	Functional	Tool box
136	C2.32	10" COMBINATION PLIERS	PROTO	Functional	Tool box

137	C2.33	DIAGONAL CUTTING PLIERS	CRAFTSMAN	Functional	Tool box
138	C2.34	LOCK RING PLIERS	PROTO	Functional	Tool box
139	C2.35	SNAP RING PLIER SET	WISE	Functional	Tool box
140	C2.36	ELECTRICAL CRIMPERS	CRAFTSMAN	Functional	Tool box
141	C2.39	HOSE CLAMP PLIERS	PROTO	Functional	Tool box
142	C2.4	PACKING PULLER 3 PIECE SET	OSBORNE	Functional	Tool box
143	C2.40	8" LINESMAN PLIERS	CHANNEL-LOCK	Functional	Tool box
144	C2.41	TIN SNIPS	WISE	Functional	Tool box
145	C2.42	SCREWDRIVER 12 PIECE SET	RIDGID	Functional	Tool box
146	C2.43	SCREWDRIVER 6 PIECE SET	STANLEY	Functional	Tool box
147	C2.44	SCREW STARTER	PROTO	Functional	Tool box
148	C2.46	SCREW EXTRACTOR SET	Black and Decker	Functional	Tool box
Maintenance/Operations Tool Inventory					
ITEM	ID #	NAME/DESCRIPTION	MANUFACTURE/SERIAL #	COMMENTS	Location
149	C2.47	GASKET SCRAPER	LEETONIA	Functional	Tool box
150	C2.49	LOW CLEARANCE HACK SAW	EASCO	Functional	Tool box
151	C2.5	FLEXIBLE PACKING TOOLS, 3 PIECE SET	OSBORNE	Functional	Tool box
152	C2.51	8 OZ. BALL PEIN HAMMER	PROTO	Functional	Tool box
153	C2.52	12 OZ. BALL PEIN HAMMER	PROTO	Functional	Tool box
154	C2.53	1 LB. BALL PEIN HAMMER	PROTO	Functional	Tool box
155	C2.54	1.5 LB. BALL PEIN HAMMER	PROTO	Functional	Tool box
156	C2.55	2 LB. CROSS PEIN HAMMER	PROTO	Functional	Tool box
157	C2.56	PLASTIC TIP HAMMER	PROTO	Functional	Tool box
158	C2.57	RUBBER Mallet	PROTO	Functional	Tool box
159	C2.58	PUNCH AND CHISEL SET	PROTO	Functional	Tool box
160	C2.6	WRENCH, 31 PIECE SET 5/16"-2 1/2"	PROTO	Functional	Tool box
161	C2.60	ALIGNING DRY BAR	MILLERS FALLS	Functional	Tool box
162	C2.62	10" PIPE WRENCH	RIDGID	Functional	Tool box
163	C2.63	14" PIPE WRENCH	RIDGID	Functional	Tool box
164	C2.64	IGNITION TOOL 13 PIECE SET	PROTO	Functional	Tool box
165	C2.66	TUBING FLARING KIT	RIDGID	Functional	Tool box
166	C2.67	MAGNETIC RETRIEVING TOOL	PROTO	Functional	Tool box
167	C2.7	OFFSET BOX WRENCH 4 PIECE SET	EASCO	Functional	Tool box
168	C2.74	FILE 12 PIECE SET WITH HANDLE	NICHOLSON	Functional	Tool box
169	C2.75	TAP AND DIE SET	HANSON	Functional	shelving
170	C2.76	GREASE GUN	PROTO	Functional	Overhead Gang box

171	C2.77	MASTER PULLER 49 PIECE SET	PROTO	Functional	Overhead Gang box
172	C2.78	SOLDERING KIT	ELECTRONIC SERVICE	R450	Cabinet
173	C2.79	GREASE GUN	PIEWS	2 EACH	Overhead Gang box
174	C2.8	BOX WRENCHES	PROTO	4 PIECE SET	Tool box
175	C2.80	DRUM PLUG WRENCH	GRAINGER	Functional	Decon pad
176	C2.81	DRUM DEHEADER	GRAINGER	Functional	Overhead Gang box
177	C2.82	EXPLOSION PROOF DROP LIGHT	BROWN MFG.	2 EACH	Shop
178	C2.84	BAND-IT TOOL	SIGNODE	Functional	Cabinet
179	C2.86	IMPACT SOCKET SET	NORTHERN TOOLS	12 PIECE SET	Tool box
180	C2.9	SHORT BOX WRENCH SET	PROTO (4 piece set)	No longer a set	Tool box
181	C3.1	STORAGE CABINET	TENNSCO	2 EACH	Shop
182	C3.2	STORAGE CABINET	TENNSCO	2 EACH	Shop
183	C3.3	STORAGE BIN	LYON	Functional	Plant
184	C3.4	STORAGE BIN	LYON	Functional	Plant
185	C3.5	STEEL SHELVING UNIT	EDSAL (2 each)	Functional	Onsite
Maintenance/Operations Tool Inventory					
ITEM	ID #	NAME/DESCRIPTION	MANUFACTURE/SERIAL #	COMMENTS	Location
187	C4.20	ELECT. IMPACT WRENCH	DEWALT	Functional	Tool box
188	C4.21	PORTABLE CHAIN HOIST	CYCLONE	Functional	Gang box
189	C4.24	TEMP. AND CONDUCTIVITY METER	YSI	Functional	Plant
190	C4.25	WATER LEVEL METER, 4 EACH	SOLINST	Functional	Shop
191	C4.26	pH METER	ICM 4150	Functional	Lab
192	C4.3	SLUDGE LEVEL DETECTOR	SLUDGELITE	Functional	Cabinet
193	C6.1	26 GAL. SPRAYER	NORTHSTAR	Functional	Shop
194	C6.12	48" WALK BEHIND MOWER	KEES	Functional	Plant
195	C6.15	ELECTRIC IMPACT WRENCH	DEWALT	Functional	Shop
196	C6.19	18" CHAIN SAW	STIHL	Functional	Shop
197	C6.20	CHAINSAW CHAPS AND JACKET	STIHL	Functional	Overhead Gang box
198	C6.24	BACKHOE	CASE 580M	Functional	Onsite
199	C6.27	TAP & DIE SET	CRAFTSMAN	Functional	Cabinet
200	C6.28	BOTTLE JACK	CRAFTSMAN	Functional	Shop
201	C6.29	HEAT GUN, Model 3300	MILWAUKEE	Functional	Tool box
202	C6.30	ALLEN SET, 1/4" DRIVE	HUSKY	Functional	Tool box
203	C6.32	HOLE SAW SET	BLU-MOL	Functional	Cabinet
204	C6.33	SOCKET SET, 3/8" DRIVE W/RATCHET	HUSKY	Functional	Tool box
205	C6.34	SOCKET SET 1/2" DRIVE W/RATCHET	PROTO	Functional	Tool box

206	C6.35	SOCKET SET 1/4' DRIVE W/RATCHET	COMPANION	Functional	Tool box
207	C6.36	6" ADJUSTABLE WRENCH	CRESCENT	Functional	Tool box
208	C6.37	TIN SNIPS, 3 PIECE SET	WISS	Functional	Tool box
209	C6.38	SCREW EXTRACTOR 8 PIECE SET	BLACK AND DECKER	Functional	
210	C6.39	BALL PEEN HAMMER, 8 OZ	HUSKY	Functional	Tool box
211	C6.40	BALL PEEN HAMMER, 16 OZ	HUSKY	Functional	Tool box
212	C6.41	BALL PEEN HAMMER, 24 OZ	HUSKY	Functional	Tool box
213	C6.42	PUNCH AND CHISEL 26 PIECE SET	CRAFTSMAN	Functional	Tool box
214	C6.43	PUNCH AND CHISEL 14 PIECE SET	BALTIMORE TOOLWORKS	Functional	Tool box
215	C6.45	PRY BAR SET	STANLEY	Functional	Tool box
216	C6.48	4" POST HOLE DIGGER	CRAFTSMAN	Functional	Tool box
217	C6.54	EG3500XK1A GENERATOR (2)	HONDA	Functional	Shop
218	C6.55	PW UPS 3115-650	Powerware	Functional	MCC Room
219	C6.57	Air Ratchet Wrench	INGERSOL-RAND MDL. 1077XP	Functional	Tool box
220	C6.58	Titanium Air Impact Wrench 1/2"	INGERSOL-RAND 2135 QT.	Functional	Tool box
221	C6.59	6" Table Grinder, Model 152.211240	CRAFTSMAN Serial: 0512W	Functional	Shop
222	C6.60	4 1/2" Table Vise, MDL 951856	Craftsman	Functional	Shop

Maintenance/Operations Tool Inventory

ITEM	ID #	NAME/DESCRIPTION	MANUFACTURE/SERIAL #	COMMENTS	Location
224	C6.65	3/8-INCH Ratchet Set	Craftsman	Functional	Tool box
225	C6.67	Welding Sheild	Fazio's	Functional	Shop
226	C6.71	Colbalt Jobbers 13 gage drill bit 2-1/2"	McMaster-Carr	Functional	Cabinet
227	C6.72	Electric Safety Mats, 38"x40", Blk & Org	Airgas	Functional	TOU MCC room
228	C6.73	Safety Mats, 38"x124" Blk & Org	Airgas	Functional	TOU MCC room
229	C6.74	Safety Mats, 38"x64" Blk & Org	Airgas	Functional	TOU MCC room
230	C6.75	Safety Mats, 38"x40" Blk & Org	Airgas	Functional	TOU MCC room
231	C6.76	GATOR 4x2 (2)	JOHN DEERE	Functional	Plant
232	C6.77	GATOR 6x4	JOHN DEERE	Functional	Plant
233	C6.78	RIDING MOWER	FERRIS	Functional	Plant
234	C6.79	21-inch PUSH MOWER	CRAFTSMAN	Functional	Plant
235	C6.80	251 MIG WELDER	MILLER MATIC	Functional	Shop
236	C6.82	3410 BAND SAW	WILTON	Functional	Shop
237	C6.84	PLATTEN TABLE	ACORN	Functional	Shop
238	C6.85	WEED TRIMMER	HUSQVARNA	Functional	Plant
239	C6.86	CORDLESS DRILL, 40245	CRAFTSMAN	Functional	Shop
240	C6.88	PALLET TRUCK, JTX-2748	JET 8000LB	Functional	Plant

241	C6.89	Werner fiberglass ladder	8' "A" Frame	Functional	Shop
242	C6.90	Michigan Ladder (2 each)	6' "A" Frame	Functional	Shop
243	C6.91	Louisville Ladder	16' Extension	Functional	Shop
244	C6.92	Louisville Ladder	36' Extension	Functional	Shop
245	C6.94	Husky Ladder	4' "A" Frame	Functional	Shop
246	C6.95	Cub Cadet	Tow behind spreader	Functional	Shop
247	C6.96	28-inch Lopping Shears	Fiskars	Functional	Shop
248	C6.97	1/4-inch Alloy Steel Stamps	Markrite	Functional	Cabinet
249	C6.98	Multi-meter, Model 115	Fluke	Functional	Shop
250	C6.99	130 Power Hole Punch Set - 13pc	Spearhead	Functional	Cabinet
251		1/4" Socket Drive 6Pt (5/32" - 9/16")	Craftsman (11 pieces)	Functional	Tool box
252		1/4" Socket Drive 6Pt Std, 4mm - 14mm	Craftsman (12 pieces)	Functional	Tool box
253		1/4" Socket Drive 12Pt Std (3/16" - 9/16")	Craftsman (10 pieces)	Functional	Tool box
254		1/4" Socket Drive 6Pt Deep (3/16" - 9/16")	Craftsman (10 pieces)	Functional	Tool box
255		1/4" Socket Drive 6Pt Deep (4mm - 14mm)	Craftsman (11 pieces)	Functional	Tool box
256		1/4-inch Thin Profile Ratchet (1/4" Drive)	Craftsman	Functional	Tool box
257		3-inch Extension Bar (1/4" Drive)	Craftsman	Functional	Tool box
258		3/8-inch Adapter (1/4" Drive)	Craftsman	Functional	Tool box
259		3/8" Socket Drive 6Pt Std (1/4" - 1")	Craftsman (13 pieces)	Functional	Tool box

Maintenance/Operations Tool Inventory

ITEM	ID #	NAME	MANUFACTURE/SERIAL #	COMMENTS	Location
260		3/8" Socket Drive 6Pt Std, 6mm - 22mm	Craftsman (17 pieces)	Functional	Tool box
261		3/8" Socket Drive 8Pt Std, 1/4" - 1/2"	Craftsman (5 pieces)	Functional	Tool box
262		3/8" Socket Drive 12Pt Std, 5/16" - 7/8"	Craftsman (10 pieces)	Functional	Tool box
263		3/8" Socket Drive 12Pt Std, 9mm - 18mm	Craftsman (10 pieces)	Functional	Tool box
264		3/8" Socket Drive 6Pt Deep, 3/8" - 7/8"	Craftsman (8 pieces)	Functional	Tool box
265		3/8" Socket Drive 6Pt Deep, 9mm - 19mm	Craftsman (11 pieces)	Functional	Tool box
266		Thin Profile Ratchet (3/8" Drive)	Craftsman	Functional	Tool box
267		3-inch Extension Bar (3/8" Drive)	Craftsman	Functional	Tool box
268		6-inch Extension Bar (3/8" Drive)	Craftsman	Functional	Tool box
269		Adapter (1/2" to 3/8" Drive)	Craftsman	Functional	Tool box
270		5/8" Spark Plug Socket (3/8" Drive)	Craftsman	Functional	Tool box
271		13/16" Spark Plug Socket (3/8" Drive)	Craftsman	Functional	Tool box
272		1/2" Socket Drive 12Pt Std, 3/8" to 1-1/16"	Craftsman (12 pieces)	Functional	Tool box
273		1/2" Socket Drive 12Pt Std, 9mm - 22mm	Craftsman (14 pieces)	Functional	Tool box
274		1/2" Socket Drive 6Pt Deep, 5/8" - 7/8"	Craftsman (5 pieces)	Functional	Tool box

275		1/2" Socket Drive 12Pt Deep , 13mm - 18mm	Craftsman (5 pieces)	Functional	Tool box
276		Thin Profile Ratchet (1/2" Drive)	Craftsman	Functional	Tool box
277		3-inch Extension Bar (1/2" Drive)	Craftsman	Functional	Tool box
278		Combination Wrench, 1/4" - 15/16"	Craftsman	Functional	Tool box
279		Combination Wrench, 1-1/16"	Craftsman	Functional	Tool box
280		Combination Wrench, 6mm - 18mm	Craftsman	Functional	Tool box
281		10 pc. Combination Ign. Wrench Set Metric	Craftsman	Functional	Tool box
282		10 pc. Combination Ign. Wrench Set Inch	Craftsman	Functional	Tool box
283		20 pc. Hex Key Set Inch	Craftsman	Functional	Tool box
284		20 pc. Hex Key Set Metric	Craftsman	Functional	Tool box
285		Magnetic Handle	Craftsman	Functional	Tool box
286		10 pc. Screwdriver Bit Set	Craftsman	Functional	Tool box
287		12 pc. Nut Driver Bit Set Inch/Metric	Craftsman	Functional	Tool box
288		2' Sump Pump	Tsurumi HS2.4-62	Functional	Shop
289		Seeker 200/Camrea Borescope	General/DCS200	Functional	Cabinet

Health and Safety Inventory

ITEM	Quantity	NAME	ITEM DESCRIPTION	COMMENTS	Location
1	1	Fire Blanket	Fire Blanket		Administrative Hallway
2	1	Infection Control Kit	Infection Control Kit		Administrative Hallway
3	1	Cardiac Science AED	Cardiac Science AED	Purch. 1/07	Administrative Hallway
4	1	Kenmore Refrigerator	Kenmore Refrigerator	Purch 11/01/06	Break Room
5	1	Dynex 20" color TV/DVD/	Dynex 20" color TV/DVD/	Purch 4/11/05	Lab

Health and Safety Inventory

ITEM	Quantity	NAME	ITEM DESCRIPTION	COMMENTS	Location
6	1	Confined space tripod	Confined space tripod	Functional	C van
7	1	Retractable lifeline (large)	Retractable lifeline (large)	Functional	Gang box
8	2	Tie-off adapter 3 ft.	Tie-off adapter 3 ft.	Functional	Break Room
9	1	3 gallon water cooler	3 gallon water cooler	Functional	Decon Room
10	3	ISI ranger SCBA, 2 each	ISI ranger SCBA	Functional	Decon Room
11	14	MSA full-face APR	MSA full-face APR	Functional	Decon Room
14	1	Pole stretcher	Pole stretcher	Functional	Decon Room
15	4	Powered Air Purifying Respirators	Powered Air Purifying Respirators	Functional	Decon Room
16	1	Respirator fit test tent	Respirator fit test tent	Functional	Decon Room
17	2	Psychrometer slide rule	Psychrometer slide rule	Functional	Decon Room Cabinet
18	2	Psychrometers - audit/calibration	Psychrometers - audit/calibration	Functional	Decon Room Cabinet
19	1	Wind directional calibrator 0422-2	Wind directional calibrator 0422-2	Functional	Decon Room Cabinet

20	3	Wind speed calibrator 049C	Wind speed calibrator 049C	Functional	Decon Room Cabinet
21	5	Full body harness	Full body harness	Functional	Plant H&S shelving
22	3	Retractable lifeline	Retractable lifeline	Functional	Plant H&S shelving
24	38	Fire extinguisher	Fire extinguisher	Functional	Fixed locations
25	8	EBA replacement case	EBA replacement case	Functional	H&S cabinet plant
26	2	MSA 1/2 face APR	MSA 1/2 face APR	Functional	H&S cabinet plant
27	2	MSA breathing airline (25')	MSA breathing airline (25')	Functional	H&S gangbox
29	4	Clear Command Radio units	Clear Command units	Functional	Decon room
30	2	Sensidyne pump kit # 800	Sensidyne pump kit # 800	Functional	Decon Room
31	C-4.23	Megaphone	FANON	Functional	H&S Office

Health and Safety Inventory

ITEM	Quantity	NAME	ITEM DESCRIPTION	COMMENTS	Location
44	3	Air Mover (Blower)	Air Mover (Blower)	Functional	Plant H&S shelving
45	1	Davit System /w self retracting line	Davit System /w self retracting line	Functional	Portable Unit
46	4	Survivair air hose reels w/ hose	Survivair air hose reels w/ hose	Functional	Plant
47	8	Air Duct	Air Duct	Functional	Plant H&S shelving
48	1	Clothes Dryer, bought 2008	Kenmore Dryer	Functional	Plant
49	1	Clothes Front Load Washer, bought 2008	Kenmore Front Load Washer	Functional	Plant
51	2	1XDV7 NFPA 70E Kit (L), bought 2015	Flash Arc Hood / Balaclava	Functional	Decon Room
52	1	1XDV8 NFPA 70E Kit (XL), bought 2015	Flash Arc Hood / Balaclava	Functional	Decon Room
53	2	Novax Gloves (Size 10), bought 2015	Rubber Insulating Gloves	Functional	Decon Room
54	1	Novax Gloves (Size 12), bought 2015	Rubber Insulating Gloves	Functional	Decon Room
55	3	Westex Gloves, bought 2015	Flame Resistant Gloves	Functional	Decon Room
56	1	WIHA tool Kit, bought 2015	Insulated Tool Kit	Functional	Shop
57	1	Cementex AW8 Adj. Wrench, bought 2015	Insulated 8" Adj. Wrench	Functional	Shop
58	1	SKC Vac-u Chamber (black box), bought 2010	SKC Vac-u Chamber (black box)	Functional	Instrumentation Room

Office Equipment Inventory

ITEM	ID	NAME	MANUFACTURE/SERIAL #	COMMENTS	Location
1	PC	Citect 1	Acer AM3910-UR30P	Functional	Control room
2	PC	Citect 2	Acer AM3910-UR30P	Functional	Control room
3	PC	Citect 3	Dell Optiplex 520	Functional	Control room
4	PC	Safety	Dell Dimension 3000	Functional	Safety office
5	PC	Randy	Dell Precision 380	Functional	Safety office
6	PC	JR	Dell Dimension 3000	Functional	JR's desk
7	PC	Eric	Dell Latitude D610 (Laptop)	Functional	Eric's house
8	PC	Randy	Acer AM3910-UR30P	Functional	Randy's desk

9	PC	Chuck	HP Probook 6550b (Laptop)	Functional	Chuck's house
10	Printer	Chuck/Citect	Brother MFC-8710DW	Functional	Control room
11	Printer	Randy	Dell 3000cn (color)	Functional	Randy's desk
12	Printer	Auto Cad	HP Designjet 500 (plotter)	Functional	Lab storage room
13	Printer	JR	Brother HL-4070 CDW color	Functional	JR's desk
14	Printer	Eric	HP OfficePro 8600	Functional	Lab storage room
15	Fax	Safety	Brother MFC 7820N	Functional	Safety office
16	Camera	Camera	Kodak Z1285	Functional	CF's desk
17	Fax	Fax machine	Brother MFC-7340	Functional	Admin Hallway
18	Copier	Copier	Kyocera KM-4035 w/finisher	Functional	Admin Hallway
19	Fax	Spare	Brother MFC-9440CN	Functional	Lab storage room

Office Equipment Inventory

ITEM	ID	NAME	MANUFACTURE/SERIAL #	COMMENTS	Location
------	----	------	----------------------	----------	----------

Process Equipment Inventory

ITEM	ID #	NAME	MANUFACTURE/SERIAL #	Use Status	Location
3	Tank 3	Collection Tank	Highland Tank & Mfg. Co. 3,143 Gallon - Fiberglass	Functional	Outside
4	Tank 4	Potable Water Tank	24,063 Gallon - Steel	Functional	Outside
5	Tank 5	Clarifier Effluent Sump	1,615 Gallon - Steel	Functional	Plant
6	Tank 6	Waste Holding Tank #1	20,000 Gallon - Steel	Functional	Underground
7	Tank 7	Waste Holding Tank #2	20,000 Gallon - Steel	Functional	Underground
19	Tank 19	Caustic Tank #1	10,100 Gallons - Steel	Functional	Plant
20	Tank 20	Caustic Tank #2	10,100 Gallons - Steel	Functional	Plant
22	Tank 22	Hydroaccumulator Tank	Syncroflo 170 Gallons	Functional	Plant
23	Prs Xducer 1	Transducer at E-7A	KPSI 720 Series	Functional	Well E-7A
24	Prs Xducer 2	Transducer at PW-1A	KPSI 720 Series	Functional	Well PW-1A
25	Prs Xducer 3	Transducer at C-15	KPSI 720 Series	Functional	Well C-15

Process Equipment Inventory

ITEM	ID #	NAME	MANUFACTURE/SERIAL #	Use Status	Location
26	Prs Xducer 4	Transducer at C-16	KPSI 720 Series	Functional	Well C-16
27	Prs Xducer 5	Transducer at C-17	KPSI 720 Series	Functional	Well C-17
28	Prs Xducer 6	Transducer at C-23	KPSI 720 Series	Functional	Well C-23
29	Prs Xducer 7	Transducer at C-25A	KPSI 720 Series	Functional	Well C-25A
30	Prs Xducer 8	Transducer at C-26A	KPSI 720 Series	Functional	Well C-26A
31	Prs Xducer 9	Transducer at C-46	KPSI 720 Series	Functional	Well C-46
32	Prs Xducer 10	Transducer at C-56	KPSI 720 Series	Functional	Well C-56

33	Prs Xducer 11	Transducer at C-63	KPSI 720 Series	Functional	Well C-63
34	Prs Xducer 12	Transducer at C-100	KPSI 720 Series	Functional	Well C-100
35	Prs Xducer 13	Transducer at C-101	KPSI 720 Series	Functional	Well C-101
36	Prs Xducer 14	Transducer at C-102	KPSI 720 Series	Functional	Well C-102
37	Prs Xducer 15	Transducer at CDB-4	KPSI 720 Series	Functional	Well CBD-4
38	Prs Xducer 16	Transducer at E-13A	KPSI 720 Series	Functional	Well E-13A
39	Prs Xducer 17	Transducer at E-15B	KPSI 720 Series	Functional	Well E-15B
40	Prs Xducer 18	Transducer at E-20B	KPSI 720 Series	Functional	Well E-20B
41	Prs Xducer 19	Transducer at Mt. Laurel Well	KPSI 720 Series	Functional	Mt. Lrl Well
42	Flowmeter	Krohne 4"	SS# S05 2609	Functional	Trailer #1
43	Actuator/Valve	Triac 2 1/2"	Valve - 150 CF8M, Actuator Model # EMI-700	Functional	Trailer #1
44	Magmeter	Signet	Part # 32551P112, SS# 07032328141-1	Functional	Trailer #1
45	Chlorine Analyzer	Hach CL17	IP62	Functional	Trailer #1
46	(3) Metering Pump	Milton Roy LMI	Model # C771-25T, SS#07032328141-1	Functional	Trailer #1
50	(5) Motor Valve	Triac	Model # EMI-300	Functional	Trailer #1
51	Motor	WEG 3 HP	Model # 00736ES3E184JM	Functional	Trailer #1
53	Pump/Motor/Tank	Goulds	Motor model C48A93A06, pump model J05, tank model V6OMP, SS# G10625	Determined Functional	Trailer #4
54	Motor 1	GE Motor - 1/6 HP	Model # 5KH32EN79H	Determined Functional	Trailer #4
55	Motor 2	GE Motor - 1/6 HP	Model # 5KH32EN79H	Determined Functional	Trailer #4
56	Motor 3	GE Motor - 1/2 HP	Model # 5KC4BUG711EX	Determined Functional	Trailer #4
57	Sampler 1	Composite Sampler #1	ISCO Model #3700, Refridgerated	Functional	Eff Shack

Process Equipment Inventory

ITEM	ID #	NAME	MANUFACTURE/SERIAL #	Use Status	Location
62	Air Comp. 1	Quincy	Model # - 325, SS# 400103	Determined Functional	Trailer #3
63	Air Comp. 1 Motor	U.S. Electric Motors	Model # - A899A, 3-HP	Determined Functional	Trailer #3
64	Air Dryer - 1	Ultra Air Dryer	Model # UA-20-AC, SS# U-02290-2	Determined Functional	Trailer #3
67	Fire 1	Fire Alarm System and Panel	Simplex-Grinell	Functional	Plant
71	Blower 3	500 scfm blower	Gasho	Functional	Outside
77	Control Pannel	TOU Control Pannel	Kessler-Ellis Products eMT3120A 12.1 Inch	Functional	TOU Area
84	Ext Pump 1	Extraction Well Pump at E-7A	Grunfos 10E8 Stainless Steel	Functional	Well E-7A
85	Ext Pump 1	Extraction Well Pump at PW-1A	Grunfos 10E8 Stainless Steel	Functional	Well PW-1A
86	Ext Pump Motor 1	Extraction Well Pump Motor at E-7A	Franklin Electric 1/2 HP	Functional	Well E-7A

Process Equipment Inventory					
ITEM	ID #	NAME	MANUFACTURE/SERIAL #	Use Status	Location
87	Ext Pump Motor 1	Extraction Well Pump Motor at E-7A	Franklin Electric 1/2 HP	Functional	Well PW-1A
89	Meter 1	Influent Tank Flow Meter	Bristol Babcock	Determined Functional	
90	Meter 2	Effluent Flow Meter	Krohn Optifux 4300C	Functional	Outside
97	Meter 9	Injection Tank Flow Meter	Neptune	Determined Functional	Outside
98	Meter 10	Interceptor Trench Flow Meter, 2 total	Orifice plate/DP transmitter Stainless Steel	Functional	Int Trench Sump
99	Meter 11	Mt. Laurel Well Flow Meter	Signature 2508-35B	Functional	Mt Lrl Well
102	Mixer 3	Clarifier Effluent Tank Mixer	Lightning XJ-33	Functional	Plant
104	Mixer 5	Caustic Mixer #1	Baldor 3 HP	Functional	Plant
105	Mixer 6	Caustic Mixer #2	Baldor 3 HP	Functional	Plant
106	Tele 1	Telephone Communication System	Comdial ExecuTech 2000	Functional	Plant
108	Drier 1	Refrigerated Air Dryer	Dayton 3Z701	Functional	Plant
111	Comp Air 2	Instrument Air Compressor, 1 of 2 Functional	Speedaire 3Z895A 100 psig	Functional	Plant
116	Pump 3	Sludge Transfer Pump, Disconnected	Wilden, Model M-2	Functional	Plant
Process Equipment Inventory					
ITEM	ID #	NAME	MANUFACTURE/SERIAL #	Use Status	Location
121	Pump 8	Polymer Feed Pump #1, in-place	Chemcon Hydraulic Diaphragm 18 gph	Functional	Plant
122	Pump 9	Polymer Feed Pump #2, in-place	Chemcon Hydraulic Diaphragm 18 gph	Functional	Plant
123	Pump 10	Sulfuric Acid Feed Pump #1, shelf	Neptune Model #522-A-N4-FA	Functional	Trailer 1
124	Pump 11	Sulfuric Acid Feed Pump #2	Neptune Model #522-A-N4-FA	Functional	Trailer 1
125	Pump 12	Sulfuric Acid Transfer Pump	Neptune Model #565-S-N4-FA	Functional	Trailer 1
128	Pump 15	Caustic CES Train Feed Pump #1	Chemcon 5 gph	Functional	Plant
129	Pump 16	Caustic CES Train Feed Pump #2	Chemcon 5 gph	Functional	Plant
133	Pump 20	Waste Holding Tank Pump #1	Flygt 100 gpm	Functional	WHT #1
134	Pump 21	Waste Holding Tank Pump #2	Flygt 80 gpm	Functional	WHT #2
135	Pump 22	Waste Holding Tank Pump #3, Spare	Flygt 80 gpm	Functional	Plant
136	Pump 23	Waste Holding Tank Pump #4, Spare	Flygt 80 gpm	Functional	Plant
139	Pump 26	North French Drain Sump Pump #1	Myers ME-1500-43 Submersible	Functional	NFD Sump
140	Pump 27	North French Drain Sump Pump #2	Myers ME-1500-43 Submersible	Functional	Plant
141	Pump 28	Center French Drain Sump Pump #1	Vertiflow 820-S Centrifugal	Functional	CFD Sump

142	Pump 29	Center French Drain Sump Pump #2	Vertiflow 820-S Centrifugal	Functional	Plant
143	Pump 30	South French Drain Sump Pump #1	Vertiflow 820-S Centrifugal	Functional	CFD Sump
144	Pump 31	South French Drain Sump Pump #2	Vertiflow 820-S Centrifugal	Functional	Plant
145	Pump 32	Force Main Pump #1	Price Pump Co. JB200-SS Centrifugal	Functional	Outside
146	Pump 33	Force Main Pump #2	Price Pump Co. JB200-SS Centrifugal	Functional	Outside
149	Pump 36	Interceptor Trench Pump #1	Grunfos 4" submersible, 5E-8	Functional	Int Trch Sump
150	Pump 37	Interceptor Trench Pump #2	Grunfos 4" submersible, 5E-8	Functional	Plant
151	Pump 38	Water Booster Pump #1	Syncroflo 60L-4 Verticle Turbine	Functional	Plant
152	Pump 39	Water Booster Pump #2	Syncroflo 60L-4 Verticle Turbine	Functional	Plant
Process Equipment Inventory					
ITEM	ID #	NAME	MANUFACTURE/SERIAL #	Use Status	Location
153	Pump 40	Water Booster Pump #3	Syncroflo 60L-4 Verticle Turbine	FUNCTIONAL	Plant
154	Pump 41	Mt. Laurel Well Pump	Grunfos 150S-150-8 Submersible	FUNCTIONAL	Mt. Lrl Well
155	Air H 1	Air Handling Unit #1	Trane Draw-Thru	FUNCTIONAL	Plant
156	Air H 2	Air Handling Unit #2	Trane Draw-Thru	FUNCTIONAL	Plant
157	Air H 3	Air Handling Unit #3	Trane Draw-Thru	FUNCTIONAL	Plant
158	Air H 4	Air Handling Unit #4	Trane Draw-Thru	FUNCTIONAL	Plant
159	Air H 5	Air Handling Unit #5	Trane Draw-Thru	FUNCTIONAL	Plant
160	Air H 6	Air Handling Unit #6	Trane Draw-Thru	FUNCTIONAL	Plant
161	Air C 1	Air Conditioner #1	Trane Draw-Thru	FUNCTIONAL	Plant
162	Air C 2	Air Conditioner #2	Trane Draw-Thru	FUNCTIONAL	Plant
163	Air C 3	Air Conditioner #3	Trane Draw-Thru	FUNCTIONAL	Plant
164	ODC 1	Odor Control Unit	Barnebey & Sutcliffe FKS-182 SS	Functional	Plant
165	ODC 2	Odor Control Unit	Barnebey & Sutcliffe FKS-182 SS	Functional	Plant
166	EH 1	Electric Heater #1	Electromode 2-5 kw/min	Functional	Plant Admin
167	EH 2	Electric Heater #2	Electromode 2-5 kw/min	Functional	Plant Admin
168	EH 3	Electric Heater #3	Electromode 2-5 kw/min	Functional	Plant Admin
169	EH 4	Electric Heater #4	Electromode 2-5 kw/min	Functional	Plant Admin
170	EH 5	Electric Heater #5	Electromode 2-5 kw/min	Functional	Plant Admin
171	EH 6	Electric Heater #6	Electromode 2-5 kw/min	Functional	Plant Admin
172	EH 7	Electric Heater #7	Electromode 2-5 kw/min	Functional	Plant Admin
173	EH 8	Electric Heater #8	Electromode 2-5 kw/min	Functional	Plant Admin
174	EH 9	Electric Heater #9	Electromode 2-5 kw/min	Functional	Plant Admin
175	EH 10	Electric Heater #10	Electromode 2-5 kw/min	Functional	Plant Admin

176	EH 11	Electric Heater #11	Electromode 2-5 kw/min	Functional	Plant Admin
177	EH 12	Electric Heater #12	Electromode 2-5 kw/min	Functional	Plant Admin
178	EH 13	Electric Heater #13	Electromode 2-5 kw/min	Functional	Plant Admin
179	SH 1	Steam Heater #1	Trane 26-55 mbh/min.	Functional	Plant
180	SH 2	Steam Heater #2	Trane 26-55 mbh/min.	Functional	Plant
181	SH 3	Steam Heater #3	Trane 26-55 mbh/min.	Functional	Plant
182	SH 4	Steam Heater #4	Trane 26-55 mbh/min.	Functional	Plant
183	SH 5	Steam Heater #5	Trane 26-55 mbh/min.	Functional	Plant
184	SH 6	Steam Heater #6	Trane 26-55 mbh/min.	Functional	Plant
185	SH 7	Steam Heater #7	Trane 26-55 mbh/min.	Functional	Plant
186	SH 8	Steam Heater #8	Trane 26-55 mbh/min.	Functional	Plant
187	SH 9	Steam Heater #9	Trane 26-55 mbh/min.	Functional	Plant
188	SH 10	Steam Heater #10	Trane 26-55 mbh/min.	Functional	Plant
189	AAF	Atomic Adsorption Fan	Perkin Elmer	Functional	Plant

Process Equipment Inventory

ITEM	ID #	NAME	MANUFACTURE/SERIAL #	Use Status	Location
191	Trailer 1	Cam Superline Trailer with 1,000 gallon tank	Cam	Functional	Outside
192	Boil 1	Plant Boiler #1	Superior Model # 4-5-751-S15-GP-G	Functional	Boiler Room

Plant Structures

ITEM	ID #	NAME	MANUFACTURE/SERIAL #	Use Status	Location
1	Admin/Maint	Administration & Maintenance Building	Not Applicable	Functional	GWTP
5	Connex Box 4	Storage Connex Box	Super Box	Storage, Functional Condition	Maint Area Parking Lot
8	GACC MCC	TOU/Plant Operations	Not Applicable	Functional Condition	TOU Area
9	Operator Shed 2	Effluent Shack	Not Marked	Operational Equipment Storage	WHT Area

SCRAP EQUIPMENT

ITEM	ID#	NAME	MANUFACTURE/SERIAL #	Use Status	Location
------	-----	------	----------------------	------------	----------

Appendix C

**FINDINGS AND DETERMINATION
DISPOSITION OF U.S. GOVERNMENT PROPERTY
AT THE LIPARI LANDFILL SUPERFUND SITE
IN GLOUCESTER COUNTY, NEW JERSEY**

The U.S. Environmental Protection Agency has been the lead agency with respect to Long-Term Response Action (LTRA) activities at the Lipari Landfill Superfund Site (the Site). The LTRA activities are nearing completion. Upon completion of the LTRA activities, the State of New Jersey (the State) will become the lead for Operation and Maintenance (O&M) activities at the Site.

Construction of a groundwater treatment system (system) at the Site was completed in 1992. The system's treatment facility, which is approximately 100 feet wide, by 180 feet long, by 20 feet high, its French Drain, inceptor trench, off-site collection tank, effluent tank and related system equipment are now approximately 23 years old. The system was custom-designed to address groundwater contamination at the Site. Removal of the system would involve incurring significant costs. Significant benefit would be derived from transferring the system to the State.

Pursuant to a Superfund State Contract, the State incurred a ten percent cost share related to the system. The State has a monetary as well as an environmental interest in obtaining the system.

The State will bear all costs related to any operation of the system as part of the upcoming O&M. Any replacement of aged equipment will be the State's responsibility.

Removal of any significant functional part of the system would jeopardize the effectiveness of any cleanup operations which may be performed by the State.

The United States does not own land at the Site. The United States acquired easements allowing for the installation of the system in the 1990s and to the extent those easements are needed for the State to operate and maintain the system, the Environmental Protection Agency, through the Region 2 Office of Regional Counsel, will work with the New Jersey Attorney General's Office to assign the United States' rights under the easements to the State.

With due regard to the above considerations I find that it is in the best interests of the United States Government and the Environmental Protection Agency to transfer title or ownership of the groundwater extraction system at the Site to the State and authorize said transfer of title as indicated by my signature below.



EPA Property Officer(s)

September 25, 2019

Date