

Grasse River Superfund Site Public Information Session

Tuesday, September 6, 2022
6:00pm-7:30pm



Agenda

Introduction

Larisa Romanowski, EPA Community Involvement Coordinator
Young Chang, EPA Remedial Project Manager

Project Update

Larry McShea, Arconic Project Manager
Dan Casey, Arcadis Construction Manager
Sarah Hill, Arcadis Environmental Monitoring Manager

2022 ice jam event

Investigation overview

Work planned for 2022

Questions and Answers

Project Team



Project Team

Presenters:

Larry McShea – Arconic Grasse River Project Manager

Dan Casey – Arcadis Construction Manager

Sarah Hill – Arcadis Environmental Monitoring Manager

Support Agency Representatives:

David Tromp – New York State Department of Environmental Conservation

Daniel Tucholski – New York State Department of Health

Jay Wilkins – Saint Regis Mohawk Tribe Environment Division

Project Update

Grasse River Remediation Project

September 6, 2022

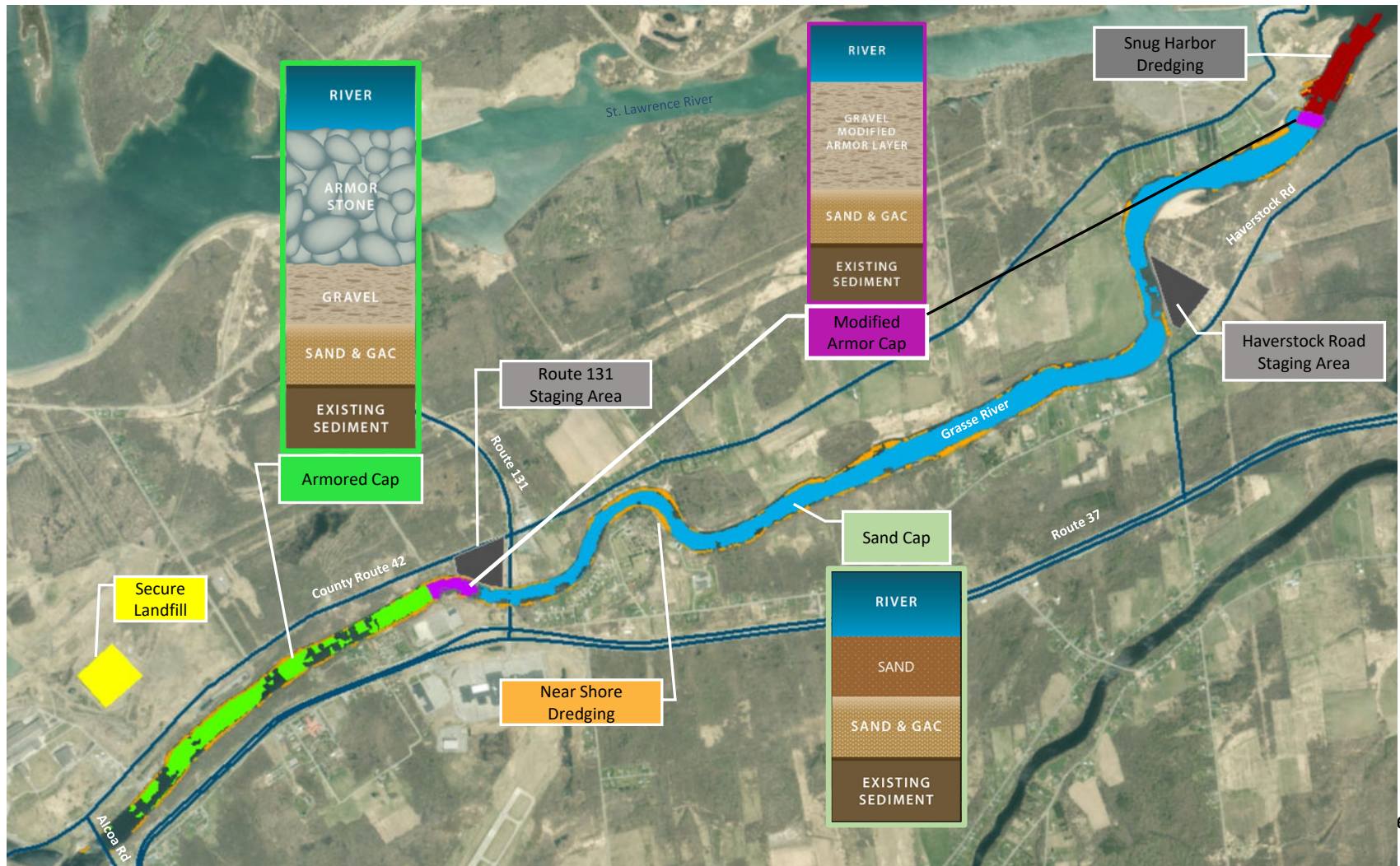


Topics to be Covered

- Grasse River Remedy Overview (Completed fall of 2021)
- 2022 Ice Jam Event Review
- Summary of 2022 Site Investigations
- Work Planned for 2022
- What to Expect During Construction
- Boating and Swimming Safety
- Monitoring
- Resources for More Information
- Q and A



Grasse River Remedy Overview

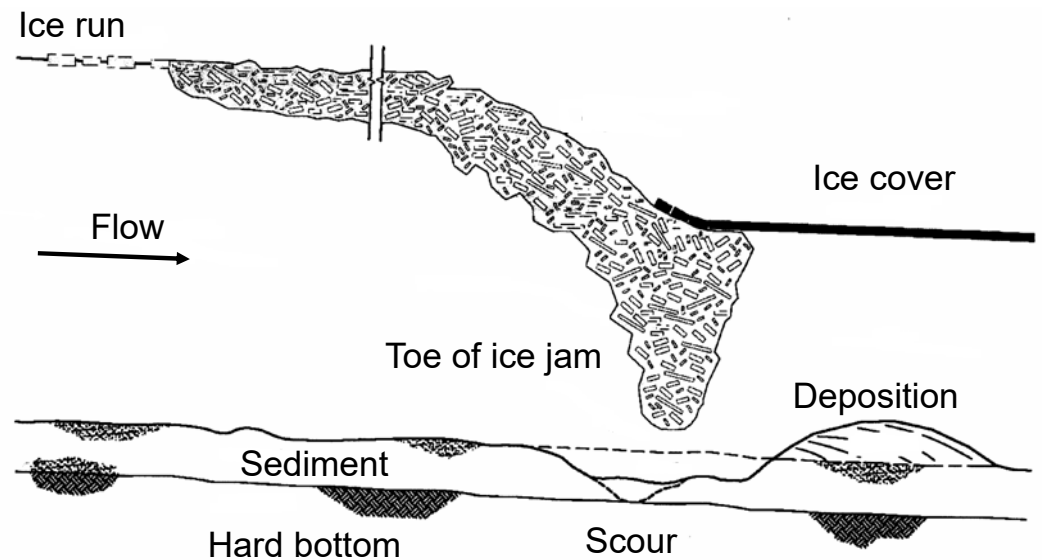


2022 Ice Jam Review

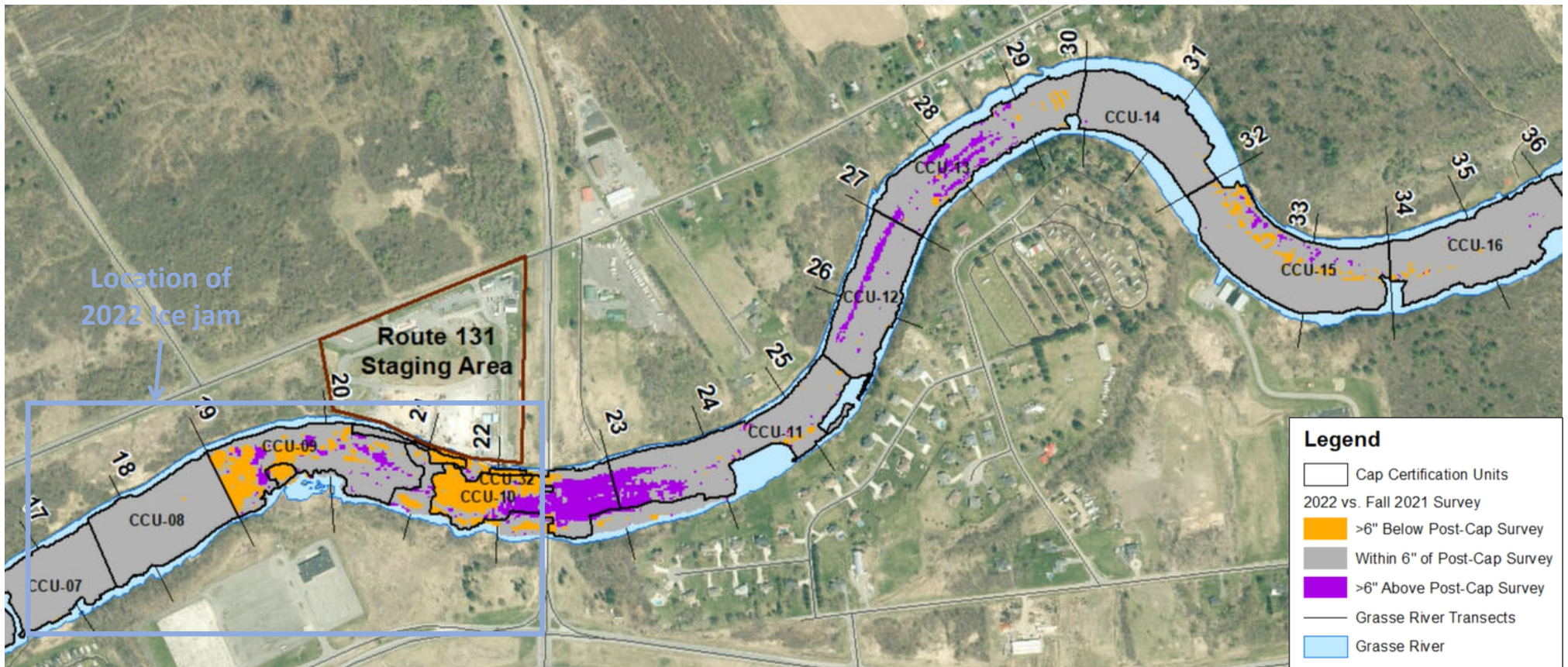


Route 131 Staging Area Looking Upstream
Tuesday March 22 – 3:10 p.m.

Generalized Cross Section of an Ice Jam



Location of 2022 Ice Jam

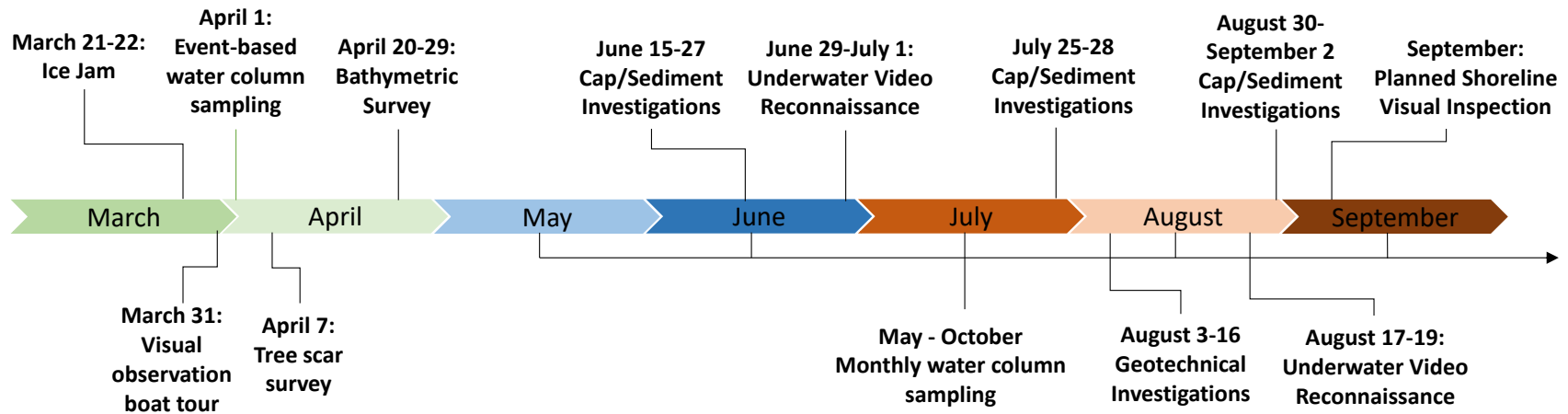


2022 Ice Jam Review

- ❑ The ice jam first formed ~2,500 ft upstream of Rt. 131 Bridge then shifted to ~250 ft upstream of bridge
 - Less than 2 percent of the river bottom experienced greater than 6 inches of erosion
 - Less than 1 acre (or less than 0.4%) of the river bottom experienced erosion into native sediments beneath the cap
- ❑ Upstream of Rt. 131 Bridge
 - Survey data indicates no damage to the armored cap; armored cap withstood ice jam forces
 - Scour within portions of the modified armored cap and sand cap
- ❑ Downstream of the Rt. 131 Bridge
 - Caps are generally intact with localized areas requiring cap repair



Summary of 2022 Site Investigations



Work Planned for 2022

Phased Cap Repair Approach

Initial Phase:

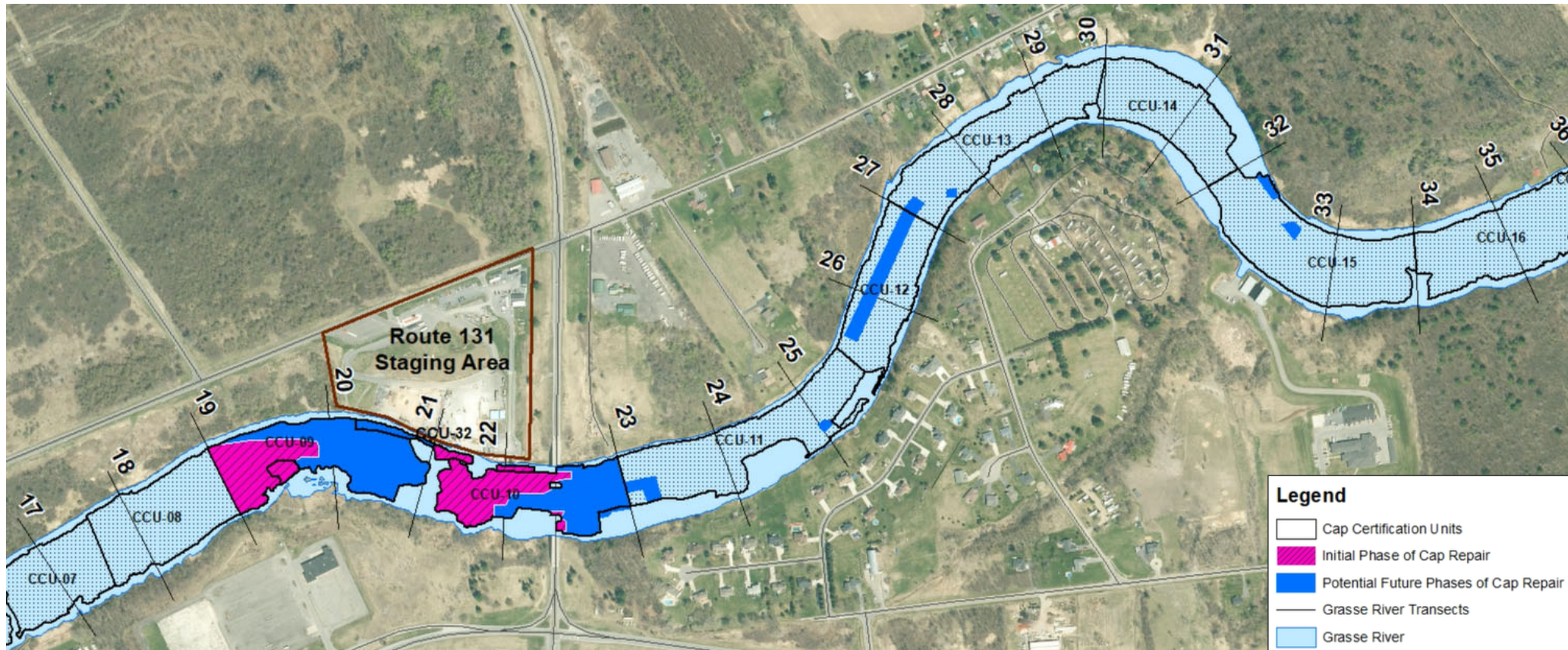
- Placement first layer of cap in localized areas where erosion of previously placed cap material occurred

Future Phase(s):

- Remainder of cap repair
- Details depend on results of ongoing evaluations



Phased Cap Repair Extents



What to Expect: Capping Operations

- ❑ Operations will be similar to work conducted in 2020 and 2021
- ❑ Route 131 Staging Area activity
 - Material import, handling, and barge loading
 - Site security
 - Lighting and associated controls
- ❑ In-river operations
 - Barge transport of material
 - Cap placement
 - No interference with resident docks
- ❑ Noise monitoring will be conducted



Operations:

- Early September through mid-November
- Monday through Saturday
- 6 am to 6 pm



What to Expect: Truck Traffic Routes



Base map source: Google Earth image obtained August 31, 2022.

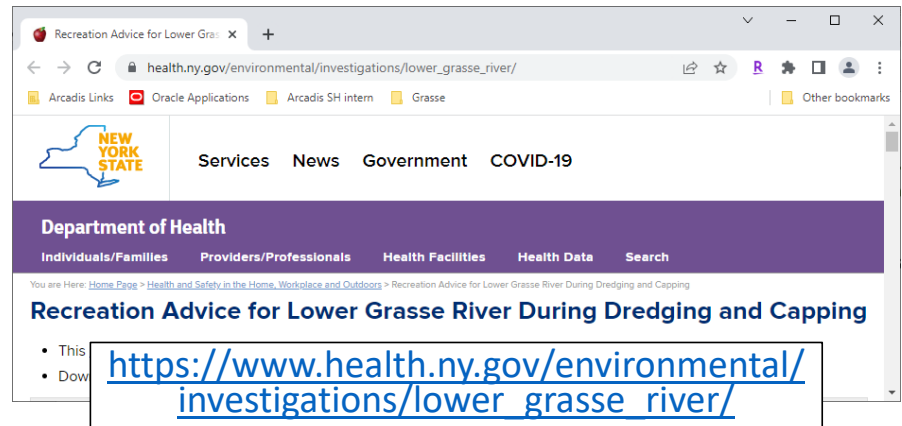
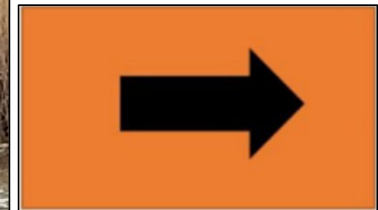


Boating and Swimming Safety

Please Take Precautions and Follow Signage Near Active Work Areas and Stay Clear to Keep Safe

- ❑ Boating work areas to be identified with floating signs
 - Reduced boat speed and safe distance
 - Navigational arrows pointing direction for safe passage around equipment

- ❑ Avoid swimming near or immediately downstream of active work areas
 - Refer to NYS Department of Health swimming factsheet

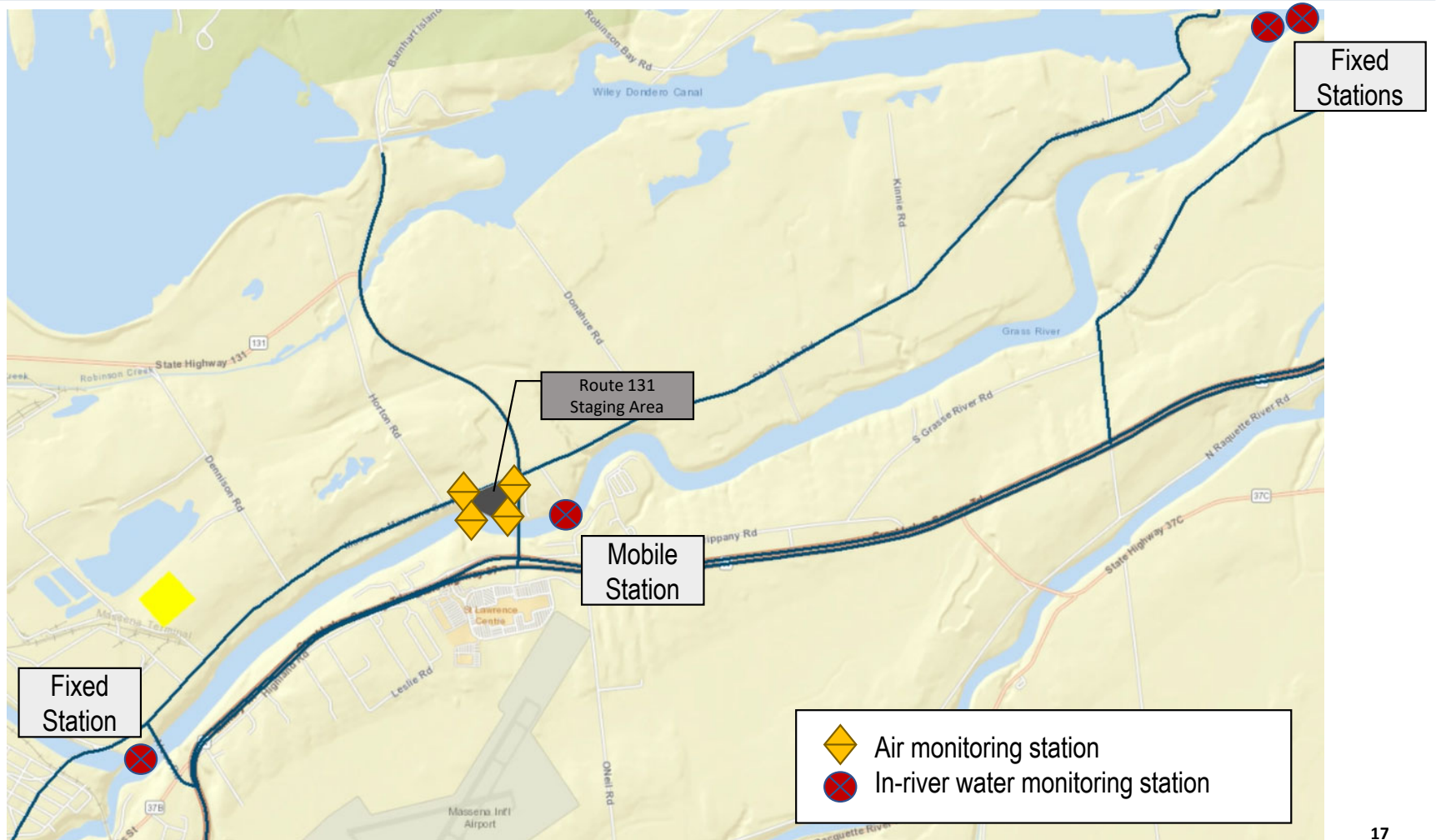


Environmental Monitoring

- ❑ Consistent with 2020/2021 capping
- ❑ Air monitoring for dust at Route 131 Staging Area
- ❑ Water monitoring for solids in the river and intakes
- ❑ Defined corrective action levels
- ❑ Monitoring data will be posted to the project website (<http://www.thegrasseriver.com/>)



Air and In-River Monitoring Locations




Intake Monitoring Locations



For More Information on the Grasse River Project

- ❑ Community updates distributed by U.S. EPA
- ❑ Visit U.S. EPA's project website:
www.epa.gov/superfund/alcoa-aggregate
- ❑ Visit Arconic's project website:
<http://www.thegrasseriver.com/>

If you have questions or concerns, please contact Arconic's community liaison:

 Sue Flynn
(315) 764-4400
Susan.Flynn@arconic.com

- ❑ Additional contacts for more information:

Young Chang	U.S. Environmental Protection Agency	Phone: 212-637-4253 Email: chang.young@epa.gov
Larry McShea	Arconic Project Manager	Phone: 724-337-5458 Email: Larry.McShea@arconic.com
David Tromp	NYS Department of Environmental Conservation	Phone: 518-402-9786 Email: david.tromp@dec.ny.gov
Daniel Tucholski	NYS Department of Health, Bureau of Environmental Exposure Evaluation	Phone: 518-402-7860 Email: BEEI@health.ny.gov
Jay Wilkins	St. Regis Mohawk Tribe	Phone: 518-358-5937, ext. 5061 Email: jay.wilkins@srmt-nsn.gov



Questions?



Q&A Session

We will first answer the questions presented in the chat box during the presentation. During this time, please **keep your lines muted**. After the questions in the chat box are answered, we will open the lines for live questions and comments.

We will call out by category (elected officials, businesses, community members) and go in alphabetical order (A-G, H-N, O-T, U-Z). For example: community members with last names A-G.

When presenting questions and comments, please state your name and affiliation followed by your question or comment. For example: “**Janet Smith, resident of Massena, NY: Where is the site located?**”

Questions and comments conveyed by phone:

- To unmute phone use (*6)

Thank you for joining us!

