



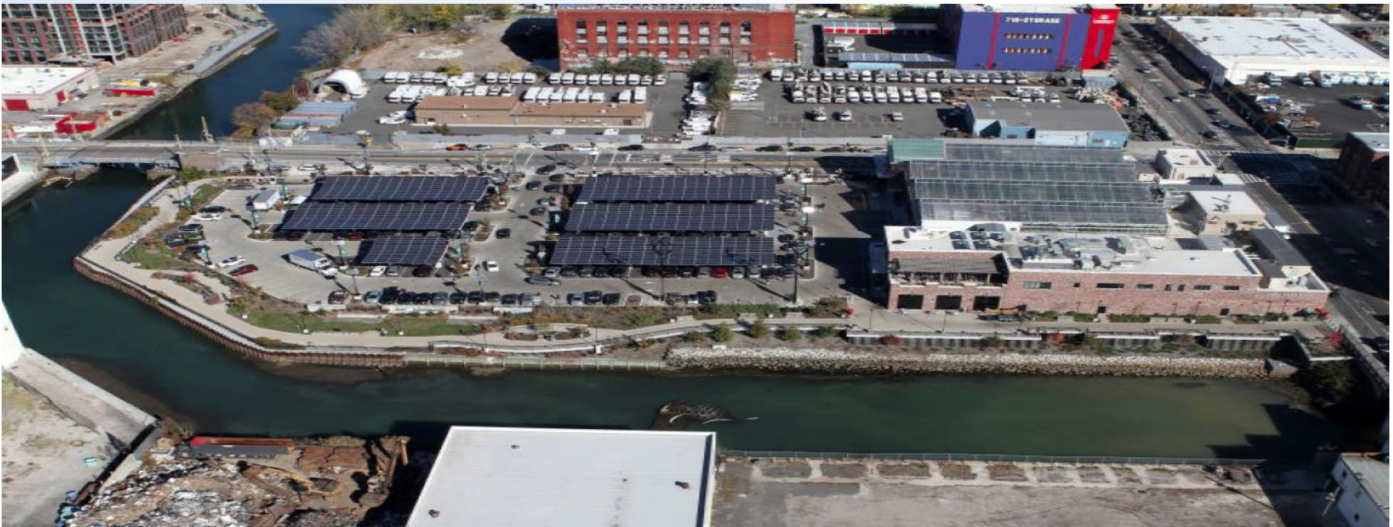
www.epa.gov

# 4<sup>th</sup> Street Turning Basin Dredging & Capping Pilot Project Brooklyn, New York

Community Update

October 2017

## 4<sup>th</sup> Street Turning Basin



### WHAT IS HAPPENING IN THE 4<sup>TH</sup> STREET TURNING BASIN?

The U.S. Environmental Protection Agency (EPA) is starting the dredging and capping pilot project at the Gowanus Canal Superfund site. Work is scheduled to begin at the 4<sup>th</sup> Street Turning Basin, (located at the intersection of 4<sup>th</sup> St and 3<sup>rd</sup> Ave), in October 2017.

In October 2016, the first phase of work performed in the turning basin, which consisted of the removal of debris from the bottom of the basin, was completed. This second phase of work, referred to as the Dredging and Capping Pilot Study, will include dredging contaminated sediment from the turning basin and installing a multi-layer protective cover or cap on the original canal bottom. Prior to dredging, steel sheeting will be installed in front of the existing bulkheads along the banks of the basin at appropriate depths to provide structural support for the dredging excavation.

### HOW WILL THE CONTAMINATED SEDIMENT BE HANDLED?

Contaminated sediment removed during dredging will be transported via barge for processing at the staging area location (the secured open lot at Smith and Huntington streets which is part of the Citizens MGP State Superfund site). There, water drained from the dredged sediment will be removed from the barge and environmentally treated before being discharged to the canal. Cement-like material will then be added to

the dewatered contaminated sediment in order to stabilize it prior to transport via barge to off-site licensed disposal facilities. The material is intended to be beneficially re-used as landfill cover. As with the 2016 Debris Removal Pilot, health and safety sampling and air monitoring will be performed during all operations.

### HOW LONG WILL WORK BE GOING ON IN THE BASIN?

Contractors will begin initial preparations in the turning basin in early October, followed by installation of steel sheeting later in the month, and initiation of the dredging pilot in early December 2017. It is anticipated that the dredging and capping pilot will be completed in Spring 2018.

### WHAT HAPPENS NEXT?

The Dredging and Capping Pilot Study will be used to evaluate and finalize the design elements for the full canal dredging and capping portion of the remediation, including:

- Selection of equipment and optimizing logistics to conduct the work within the tight constraints of the canal
- Optimizing the processing and disposal of the dredged material
- Optimizing methods for installing the multi-layered cap.

# Timeline for Pilot Project

## October 2017 – April 2018

### Primary Staging Area\*

Equipment for the project will be staged on a secured open lot at the corner of Smith and Huntington streets. Barges will be used to transfer the material for processing and disposal.

### Dredging and Capping Pilot Study Location

### Environmental Monitoring

Water, air and odor monitoring will be conducted at both locations throughout this project. This will include visual inspection and a network of automated monitoring stations that measure air quality. These stations will provide real-time data to project operators.

#### For more information, please contact:

Natalie Loney  
Community Involvement Coordinator  
(212) 637-3639  
[loney.natalie@epa.gov](mailto:loney.natalie@epa.gov)

For more information, including Pilot Project Plans, Monitoring Data and Reports, visit EPA's Gowanus Canal webpage: [www.epa.gov/superfund/gowanus-canal](http://www.epa.gov/superfund/gowanus-canal)