

Appendix A

Phase 1 and 2 SAM Weekly Reports

Appendix A-1

Phase 1 SAM Weekly Reports

Weekly Progress Report #1 – Phase 1 SAM

Period: 3/26/12 – 4/6/12

Contractors On-site and Roles:

ARCADIS US Inc. – Project Oversight and Monitoring
Land N Sea – UST Removal and Soil Excavation
Contractor

On-Site Project Work Performed:

- Completed survey work within Q Creek to support the Drainage Area Velocity Evaluation (DAVE).
- Performed utility clearance of Material Handling and Loadout Area (MHLA).
- Installed erosion and sediment controls (hay bales, stabilized construction entrance).
- Abandoned monitoring well MW-11.
- Performed test pit investigation to identify location/position, structural integrity and contents of USTs.
- Removed portion of Building 54 floor slab, graded beam and portion of separate concrete slab over USTs. Broke up remainder of floor slab.
- Conducted excavation to expose top of UST Nos. 20 and 21. Overburden soil loaded directly into end dump truck and transported to MHSA.
- Monitored air within excavation and within tanks. Proceeded with cutting tops of tanks to expose contents. Observed pea gravel in both USTs.
- Constructed sump within UST No. 21 to extract liquids prior to pea gravel removal. Containerized liquid in poly tanks staged within lined roll-off (secondary containment). Pea gravel within UST No. 20 was dry.
- Removed contents of UST No. 20 while liquid extracted from UST No. 21. Contents of UST No. 20 loaded directly into lined roll-off.
- Following removal of pea gravel, UST No. 20 was removed and loaded directly into end dump truck and transported to MHLA.
- Excavated pea gravel from UST No. 21 and loaded directly into lined roll-off.
- Following removal of pea gravel, UST No. 21 was removed and loaded directly into end dump truck and transported to MHLA.
- Collected floor and sidewall soil samples for analytical testing.
- Placed non-woven geotextile within excavation. Placed and compacted clean, imported fill within excavation.

Work Projected Next Week:

- Preparation for waste characterization of contents of UST Nos. 20 and 21.
- Preparation for waste characterization of soils excavated near UST Nos. 20 and 21.
- Due to proximity of tanks to the slope and presence of unsupported concrete slab, preparation of a revised approach to remove UST Nos. 22 and 23.

Safety and Health:

- Established perimeter and workzone monitoring of organic vapors.
- Utilized proper PPE and work equipment for tasks.
- Conducted tick checks throughout the day.



Test pits to locate USTs



Loading of portion of Building 54 slab for transport to MHLA



UST No. 20 (left) ready for removal, UST No. 21 with contents (pea gravel) exposed for excavation

Weekly Progress Report #2 – SAM Phase I

Period: 4/9/12 – 4/13/12

Contractors On-site and Roles:

ARCADIS US Inc. – Project Oversight and Monitoring
Land N Sea – UST removal and Soil Excavation
Contractor

On-Site Project Work Performed:

- Utilization of heavier tarp to cover waste piles within Material Handling and Loading Area (MHLA) to increase stability against heavy winds
- On-site meetings to discuss waste characterization sampling and proposed approach for removal of UST Nos. 22 and 23
- Preparation of draft Contained-In Determination memorandum for soils excavated from area surrounding UST Nos. 20 and 21
- Continuation of analysis associated with Drainage Area Velocity Evaluation (DAVE) for Q Creek
- Revision of the Technical Memorandum Addendum for the Q Creek Bank Stabilization to reflect revised approach for removing UST Nos. 22 and 23 as part of Slope Area Mitigation (SAM) Phase I

Work Projected Next Week:

- Waste characterization sampling for materials within the MHLA associated with removal of UST Nos. 20 and 21
- Continuation of analysis associated with DAVE for Q Creek
- Continued revision and submittal of the Technical Memorandum Addendum for the Q Creek Bank Stabilization to reflect revised approach for removing UST Nos. 22 and 23 as part of SAM Phase I
- Continued preparation of draft Contained-In Determination memorandum for soils excavated from area surrounding UST Nos. 20 and 21
- Demolition of buildings and removal of debris within the Coatings Facility Area (CFA) to allow construction of Material Handling and Loading Area 2 (MHLA 2).

Safety and Health:

- Being aware of uneven walking surfaces and avoiding slips, trips, and falls
- Wind hazards and using proper eye protection to keep dust/particulate from injuring eyes during periods of heavy winds
- Conducted tick checks throughout the day



Heavier blue tarp utilized within MHLA to increase stability against heavy winds

Weekly Progress Report #3 – SAM Phase I

Period: 4/16/12 – 4/20/12

Contractors on Site and Roles:

ARCADIS US Inc. – Project Oversight and Monitoring
Land N Sea – UST Removal and Soil Excavation
Contractor

On-Site Project Work Performed:

- Waste characterization sampling of soil piles, concrete debris from Building 54 foundation, and contents (pea gravel and liquid) of UST Nos. 20 and 21.
- Continued preparation of draft Contained-In Determination memorandum for soils excavated from area surrounding UST Nos. 20 and 21.
- Continued analysis associated with Drainage Area Velocity Evaluation (DAVE) for Q Creek.
- Continued preparation of the Technical Memorandum Addendum for the Q Creek Bank Stabilization to reflect revised approach for removing UST Nos. 22 and 23 as part of Slope Area Mitigation (SAM) Phase I.
- Installation of silt curtain within Q Creek and silt fence at toe of embankment adjacent to Q Creek in preparation of removal of UST Nos. 22 and 23.

Work Projected Next Week:

- Receive and review waste characterization data for materials associated with removal of UST Nos. 20 and 21.
- Continue analysis associated with DAVE for Q Creek.
- Submit the Technical Memorandum Addendum for the Q Creek Bank Stabilization to reflect revised approach for removing UST Nos. 22 and 23 as part of SAM Phase I.
- Finalize preparation of draft Contained-In Determination memorandum for soils excavated from area surrounding UST Nos. 20 and 21.
- Continue demolition of buildings and removal of debris within the Coatings Facility Area (CFA) to allow construction of Material Handling and Loading Area 2 (MHLA 2).

Safety and Health:

- Use of ladders to reach elevated surfaces for sampling.
- Use of appropriate PPE for preparation and conducting waste characterization sampling.
- Use of waders for work within Q Creek.



Sampling of soil stockpile



Silt Curtain installed within Q Creek, Silt Fence installed at toe of embankment adjacent to Q Creek

Weekly Progress Report #4 – SAM Phase I

Period: 4/23/12 – 4/27/12

Contractors on Site and Roles:

ARCADIS US Inc. – Project Oversight and Monitoring
Land N Sea – UST Removal and Soil Excavation
Contractor

Project Work Performed:

- Received and reviewed waste characterization sampling results for soil piles, concrete debris from Building 54 foundation, and contents (pea gravel and liquid) of UST Nos. 20 and 21.
- Continued preparation of draft Contained-In Determination memorandum for soils excavated from area surrounding UST Nos. 20 and 21.
- Continued analysis associated with Drainage Area Velocity Evaluation (DAVE) for Q Creek.
- Continued preparation of Soil Investigation Plan for investigation to be conducted in conjunction with Phase 1 Slope Area Mitigation (SAM) activities.
- Submitted Technical Memorandum Addendum for the Q Creek Bank Stabilization to reflect revised approach for removing UST Nos. 22 and 23 as part of Phase 1 SAM.
- Continued demolition of buildings within the Coatings Facility Area (CFA) to facilitate installation of Material Handling and Loading Area 2 (MHLA 2).

Work Projected Next Week:

- Continue analysis associated with DAVE for Q Creek.
- Finalize Contained-In Determination memorandum for soils excavated from area surrounding UST Nos. 20 and 21.
- Proceed with remaining activities associated with SAM Phase 1.
- Submit notification of Soil Investigation Plan activities.

Safety and Health:

- Being aware of turn radius of heavy equipment and falling structures associated with CFA building demolition.
- High winds blowing debris and possible use of goggles as additional PPE for eye protection.



Demolition activities at the CFA



Demolition activities at the CFA

Weekly Progress Report #5 – SAM Phase I

Period: 4/30/12 – 5/4/12

Contractors on Site and Roles:

ARCADIS US Inc. – Project Oversight and Monitoring
Land N Sea – UST Removal and Soil Excavation
Contractor

Project Work Performed:

- Received and reviewed waste characterization sampling results for soil piles, concrete debris from Building 54 foundation, and contents (pea gravel and liquid) of UST Nos. 20 and 21.
- Continued preparation of draft Contained-In Determination memorandum for soils excavated from area surrounding UST Nos. 20 and 21.
- Continued analysis associated with Drainage Area Velocity Evaluation (DAVE) for Q Creek.
- Continued preparation of Soil Investigation Plan for investigation to be conducted in conjunction with Phase I SAM activities.
- Continued demolition of buildings within the CFA to facilitate installation of Material Handling and Loading Area 2 (MHLA 2).
- Received USEPA approval (dated April 27, 2012) of SAM Phase I Technical Memorandum Addendum.
- Resumed Phase I SAM activities based on USEPA approval of Technical Memorandum Addendum. During resumption of work, an additional UST (UST X) was discovered within the embankment. The tank contained liquid with a layer of sludge at the bottom. An initial measurement with the Multirae did not indicate that a hazardous environment was present. A rod was inserted within the UST to measure the depth and disturbance of the sludge resulted in a temporary Multirae measurement of 300 ppm VOCs and 100% LEL. Work was stopped and a sample of the sludge was collected for analytical testing.

Work Projected Next Week:

- Continue analysis associated with DAVE for Q Creek.
- Finalize Contained-In Determination memorandum for soils excavated from area surrounding UST Nos. 20 and 21.
- Resume remaining activities associated with SAM Phase I.
- Submit Soil Investigation Plan for investigation to be conducted in conjunction with Phase I SAM activities.

Safety and Health:

- Slips, trips, and falls with slick surfaces following rain.
- Sequence of measures to be implemented while investigating UST X and possible flammable environment.



Location of UST X relative to UST Nos. 22 and 23



Measures implemented to temporarily secure UST X until removal work resumes

Weekly Progress Report #6 – SAM Phase I

Period: 5/7/12 – 5/11/12

Contractors on Site and Roles:

ARCADIS US Inc. – Project Oversight and Monitoring
Land N Sea – UST Removal and Soil Excavation
Contractor

Project Work Performed:

- Continued preparation of draft Contained-In Determination memorandum for soils excavated from area surrounding USTs.
- Continued analysis associated with Drainage Area Velocity Evaluation (DAVE) for Q Creek.
- Prepared and submitted a notification for conducting soil investigation (SI) sampling activities to inform the Phase 2 Slope Area Mitigation (Phase 2 SAM) design work.
- Submitted an extension request for submittal of Phase 2 SAM Technical Memorandum and received USEPA approval of extension request.
- Prepared Material Handling and Loading Area 2 (MHLA 2).
- Received and reviewed analytical data for sludge sample collected from UST X.
- Removed contents of UST X. Removed UST Nos. 22, 23, and X. Collected soil samples beneath and beside former location of UST Nos. 22, 23, and X. Backfilled excavation associated with removal of UST Nos. 22, 23, and X.
- Performed utility clearance and boring location markout in association with SI implementation.



Vacuumping content of UST X



UST X removal



Restored excavation after removal of UST Nos. 22, 23, and X

Work Projected Next Week:

- Continue analysis associated with DAVE for Q Creek and preparation of SAM Phase 2 Technical Memorandum.
- Finalize preparation of draft Contained-In Determination memorandum for soils excavated from area surrounding USTs.
- Collect waste characterization samples for materials associated with removal of UST Nos. 22, 23, and X.
- Implement SI activities.

Safety and Health:

- Slips, trips, and falls with slick surfaces following rain
- Sequence of measures to be implemented while investigating UST X and possible flammable environment
- Flash flood safety

Weekly Progress Report #7 – SAM Phase I

Period: 5/14/12 – 5/18/12

Contractors on Site and Roles:

ARCADIS US Inc. – Project Oversight and Monitoring
Land N Sea – UST Removal and Soil Excavation
Contractor
East Coast Drilling – Geoprobe® Operation

Project Work Performed:

- Continued preparation of draft Request for Approval of Contained-Out Determinations for materials generated during Slope Area Mitigation activities.
- Continued analysis associated with Drainage Area Velocity Evaluation (DAVE) for Q Creek.
- Implemented Soil Investigation Plan.
- Collected solid and liquid samples for waste characterization of materials generated in association with removal of UST Nos. 22, 23, and X.
- Received analytical data for waste characterization of material generated in association with removal of UST Nos. 22, 23, and X.



Soil boring installation

Work Projected Next Week:

- Continue analysis associated with DAVE (for Q Creek) and preparation of SAM Phase 2 Technical Memorandum.
- Complete and submit draft Request for Approval of Contained-Out Determinations for materials generated during Slope Area Mitigation activities.

Safety and Health:

- Exercising caution while driving with limited visibility while the sun is low on the horizon.
- Safe work practices around drill rigs.



Sample screening and collection

Weekly Progress Report #8 – SAM Phase I

Period: 5/21/12 – 6/1/12

Contractors on Site and Roles:

ARCADIS US Inc. – Project Oversight and Monitoring
Land N Sea – UST Removal and Soil Excavation
Contractor

Project Work Performed:..

- Completed draft Request for Approval of Contained-Out Determinations for materials generated during Slope Area Mitigation activities and provided a review copy to USEPA.
- Completed analysis associated with Drainage Area Velocity Evaluation (DAVE) for Q Creek.
- Continued preparation of Phase 2 SAM Technical Memorandum.
- Excavated test pits in northeast corner of former Building 36 and northwest corner of former Building 37 to collect additional subsurface soil samples to delineate extent of PCB concentrations.
- Collected soil samples for PCB analysis from areas below pipes in Q Creek embankment near former Buildings 54 and 57.
- Placed topsoil, seed, and erosion matting on areas disturbed as part of Phase 1 SAM activities.

Work Projected Next Week:

- Continue preparation of Phase 2 SAM Technical Memorandum.

Safety and Health:

- Embankment stability after heavy rains
- Driving precautions when in a hurry



Test pit excavation



Disturbed area from Phase 1 SAM activities with topsoil, seed, and erosion matting

Appendix A-2

Phase 2 SAM Weekly Reports

Weekly Progress Report #1 - Phase 2 SAM

Period: 6/2/12 - 8/12/12

Contractors on Site and Roles:

ARCADIS US, Inc. – Consultant
Land N Sea – Construction Subcontractor
Dennis W. Sklar, Inc. – Surveying
Master Locators, Inc. – Locate subsurface utilities
Allied Biological, Inc. – Vegetation control applications

Field Activities Performed:

- Conducted engineering inspections of Q Creek, bank area and concrete retaining walls.
- Collected soil samples from slope along south side of Q Creek and analyzed for PCBs. Results confirmed that the proposed excavation limits provided in the Phase 2 SAM Technical Memorandum Addendum Contract Drawings would achieve soil removal objectives.
- Surveyed points along Q Creek and bank and installed survey reference monuments.
- Conducted New Jersey One-Call notification.
- Subsurface utility survey: marked-out underground storage tanks (USTs), piping and lines.
- Investigated contents of UST Nos. 14, 15, 24, 25, 28, 29 and 30. Did not locate UST Nos. 24 and 28 at anticipated locations and will attempt to locate those USTs during Phase 2 SAM excavation work.
- Improved and removed obstructions (fencing, inactive utility poles, tree limbs) along access roads.
- Conducted pre-construction photo documentation.
- Completed vegetation control applications within Coatings Facility Area (CFA).
- Began clearing staging areas for Phase 2 SAM work within CFA.
- Waste Removal:
 - None to date for Phase 2 SAM activities (SAM 1 waste transported off-site for disposal).
- Regulatory Deliverables and Approvals:
 - Submitted a Phase 2 SAM Technical Memorandum on June 15, 2012 and a Phase 2 SAM Technical Memorandum Addendum on July 13, 2012 and received USEPA approval (with exception of planting plan) on August 3, 2012.
 - Received PADEP and NJDEP approvals (on June 29, 2012 and July 9, 2012, respectively) of Requests for Approval of a Contained-Out Determination for Phase 1 SAM waste materials.

Work Projected for Next Week:

- Mobilize labor, equipment and materials and conduct site preparation activities (vegetation clearing, staging area preparation, etc.) for Phase 2 SAM implementation.
- Excavate test pit to identify unknown utility marked out during subsurface utility survey northeast of former Building 54.
- Abandon monitoring wells MW-10 and MW-12 starting August 15.

Health & Safety:

- Updated HASP for Phase 2 SAM activities.
- Conducted air monitoring
- Installed additional safety fence and signage.
- Continued Health and Safety Oversight and implementation of the HASP.



UST Content Investigation



Access Road Improvements



CFA Inactive Utility Pole Removal – Clearing Work Area

Weekly Progress Report #2 – Phase 2 SAM

Period: 8/13/12 - 8/19/12

Contractors on Site and Roles:

ARCADIS US Inc. – Consultant

Land N Sea – Construction Subcontractor

Dennis W. Sklar, Inc. – Surveying

Advanced Drilling, Inc. – Well Abandonment

Field Activities Performed:

- Received heavy construction equipment and materials.
- Excavated test pit to investigate unknown utility located near pipe DP-15 north of Building 74. Encountered dark colored soil near surface within test pit. Sampled dark soil and analyzed for PCBs (preliminary results indicated 0.07 mg/kg and nondetectable PCB concentrations). During excavation of DP-15, this soil will be staged separately from other soil and characterized for off-site disposal.
- Collected representative samples of potential imported fill material to identify whether it may be used at the site.
- Surveyed points along Q Creek bank and installed survey reference monuments.
- Improved truck access roadways, including filling pothole at front gate.
- Installed construction trailer in CFA.
- Completed abandonment of monitoring well.
- Initiated relocation of concrete debris pile from CFA to southwest corner of main mill building.

Off-Site Waste Disposal:

- None to date

Regulatory Deliverables and Approvals:

- Received approval of Phase 2 SAM Tech Memo Addendum planting plan

Work Projected for Next Week:

- Continue relocation of concrete debris pile and preparation of soil staging areas.
- Size and remove concrete slab located within former Building 57 area.
- Install traffic control signage for truck route.
- Install erosion and sediment controls and conduct additional vegetation removal within former Building 57 area.
- Initiate excavation of underground pipe DP-15.

Safety and Health:

- Continue perimeter and work zone air monitoring.
- Completed incident report on alleged back strain sustained by security officer while closing front gate (8/16/12).



Excavation of test pit for investigation of unknown utility.



Air monitoring during relocation of concrete debris

Weekly Progress Report #03 – Phase 2 SAM

Period: 8/20/12 - 8/26/12

Contractors on Site and Roles:

ARCADIS US Inc. – Environmental contractor

Land N Sea – Environmental subcontractor

Dennis W. Sklar, Inc. – Surveying

Field Activities Performed:

- Continued mobilization of equipment and materials to Coatings Facility Area (CFA).
- Constructed soil stockpile storage areas.
- Demolished concrete slabs at underground pipe DP-15 and near former Building 54.
- Completed sizing and relocating of concrete debris (generated during CFA demolition).
- Installed construction trailer within CFA.
- Received deliveries of stone fill.

Waste Removal:

- None to date for Phase 2 SAM activities

Regulatory Deliverables and Approvals:

- None during this period.

Work Projected for Next Week:

- Installation of erosion and sediment control measures.
- Vegetation clearing near former Building 57 toward Q Creek.
- Excavation and removal of underground pipe DP-15 and excavation, grading and backfilling (including Q Creek restoration) of area near former Building 57.
- Import backfill for use during restoration.

Safety and Health:

- Implementation of work zone and perimeter air monitoring.
- Installed construction entrance signs on Frenchtown Road.
- Amended Health & Safety Plan (HASP) for Phase 2 SAM.



Traffic Safety Sign Installation



Construction Soil & Debris Staging Areas



Relocation of Concrete Debris from CFA to Main Mill Area

Weekly Progress Report #04 – Phase 2 SAM

Period: 8/27/12 - 9/02/12

Contractors On-site and Roles:

ARCADIS US Inc. –Environmental contractor

Land N Sea – Environmental subcontractor

Dennis W. Sklar, Inc. – Surveying

Jersey Essay Labs, Inc. – Onsite Compaction Testing

Field Activities Performed:

- Continued mobilization of equipment and materials to CFA Area
- Constructed soil staging areas
- Excavation, backfill and compaction testing completed for removal of underground pipe DP-15
- Installed soil erosion control measures on bank and in Q-Creek.
- Removed fence, vegetation and began excavation of slope within former Building 57 area
- Received stone backfill deliveries
- Received and positioned temporary waste water storage tanks
- Site layout and excavation grade surveying completed
- Site reconnaissance and inspection of proposed backfill sources
- Collection and analysis of post-excavation, waste characterization, and proposed backfill soil samples
- Waste Management
 - Approximately 740 cy of soil from DP-15 removal and former Building 57 area excavation staged on site
 - Analyses pending; no Phase 2 SAM waste disposed off-site to date

Regulatory Deliverables and Approvals:

- None during this period

Work Projected for Next Week:

- Excavation of area near former Building 57
- Site surveying
- Placement and compaction of backfill, as needed, for working pad/access during excavation activities
- Initiate restoration at toe of slope along Q-Creek within former Building 57 area (placement of stone and chimney drain)
- Waste and potential onsite soil reuse (former Building 57 area excavation) sampling and analysis
- Continue receiving imported fill materials

Safety and Health:

- Operation of perimeter and work zone air monitoring
- Implementation of dust controls via water truck



Removal of Underground Pipe DP-15



Water Truck Dust Mitigation Activities



Former Building Area 57 Excavation

Weekly Progress Report #05 – Phase 2 SAM

Period: 9/3/12 - 9/9/12

Contractors on Site and Roles:

ARCADIS US Inc. – Environmental contractor

Land N Sea – Environmental subcontractor

Dennis W. Sklar, Inc. – Surveying

Field Activities Performed:

- Staged imported stone onsite for use during Q Creek restoration.
- Constructed lined soil staging areas.
- Installed and maintained soil erosion and sediment control measures along Q Creek and within disturbed areas.
- Conducted vegetation removal and soil excavation within former Building 57 Area to achieve sub-base and in preparation for Q Creek bank restoration.
- Previously unanticipated, removed concrete slab for former Building 57 and soil below its footprint to maintain a safe working area to access Q Creek for grading and restoration.
- Conducted surveying for site layout, grades and limits of restoration.
- Implemented dust control via wetting of surfaces.
- Collected post-excavation and waste characterization samples for laboratory analysis.

Waste Removal:

- Approximately 1,930 CY of soil and concrete excavated and staged onsite with characterization pending. To date, no waste associated with Phase 2 SAM activities disposed off-site.

Regulatory Deliverables and Approvals:

- Submitted Weekly Progress Report #04 to USEPA on 9/6/12.
- Submitted revised *Phase 2 Slope Area Mitigation Technical Memorandum* and *Phase 2 Slope Area Mitigation Tech Memo Addendum* to USEPA on 9/6/12.

Work Projected for Next Week:

- Continue excavation, staging and sampling and analysis of soil from former Building 57 Area.
- Begin Q Creek bank restoration and slope backfilling and compaction within former Building 57 Area.
- Continue monitoring and maintenance of erosion and sediment controls.
- Receive additional backfill and stone materials.

Health and Safety:

- Operation of perimeter and work zone air monitoring stations.
- Implement air quality controls as needed for volatile organic compounds and dust.



Excavation of Former Building 57 Area Adjacent to Q Creek



Staging Imported Stone for Q Creek Bank Restoration



Soil Staging Area

Weekly Progress Report #06 – Phase 2 SAM

Period: 9/10/12 - 9/16/12

Contractors on Site and Roles:

ARCADIS US Inc. – Environmental contractor

Land N Sea – Environmental subcontractor

Dennis W. Sklar, Inc. – Surveying

Field Activities Performed:

- Continued construction of lined soil staging areas.
- Vegetation removal and soil excavation within former Building 57 Area to achieve subbase.
- Removal of north end of underground pipe DP-15 north of former Building 57.
- Maintained and installed supplemental soil erosion control measures within excavation area and along Q Creek.
- Continued monitoring of the existing concrete retaining wall along Q Creek for movement.
- Survey layout of former Building 54 Area.
- Implemented dust suppression via wetting access roads.
- Collection and analysis of post-excavation and waste classification samples.

Waste Removal:

- An estimated 3,190 cubic yards of material excavated from former Building 57 Area and staged within lined areas on site; none transported off-site for disposal to date for SAM 2 activities.
- Continue air quality monitoring.

Regulatory Deliverables and Approvals:

- None.

Anticipated Site Work for Next Week:

- Complete excavation of former Building 57 Area and placement of stone in Q Creek bank restoration.
- Receive and review post-excavation soil analyses from former Building 57 Area.
- Pending acceptable post-excavation analyses, grading of subbase and placement of topsoil and restoration features (with exception of plantings scheduled for 2013) within former Building 57 Area.
- Vegetation and existing chain link fence removal and installation of erosion controls within former Building 54 Area.
- Initiate TSCA excavations adjacent to former Building 54.
- Continue monitoring of existing concrete retaining wall along Q Creek and work zone/perimeter air quality.
- Receive additional backfill and stone materials.
- Install erosion controls.

Safety and Health:

- Work zone and perimeter air quality monitoring and dust suppression.



Transporting Former Building 57 Area Excavated Soil to Temporary Staging Area



Stone Placement along Q Creek (Former Building 57 Area)



Former Building 54 Area Survey Layout

Weekly Progress Report #07 – Phase 2 SAM

Period: 9/17/12 - 9/23/12

Contractors on Site and Roles:

ARCADIS US Inc. – Environmental contractor

Land N Sea – Environmental subcontractor

Dennis W. Sklar, Inc. – Surveying

Field Activities Performed:

- Continued construction of lined soil staging areas.
- Maintained and installed supplemental soil erosion control measures within excavation area and along Q Creek.
- Continued monitoring of the existing concrete retaining wall along Q Creek for movement – none indicated.
- Installed stone along bank of Q Creek and filter fabric and began fill placement within former Building 57 Area.
- Continued survey layout of former Building 54 Area.
- Implemented dust suppression via wetting access roads.
- Collected and analyzed post-excavation and waste classification samples.
- Inspected, sampled and analyzed imported fill and topsoil sources.
- Installed no trespassing and no hunting signs along river bank and security cameras at mill building and Coatings Facility Area.

Waste/Soil Reuse Generation:

- Estimated 3,190 cubic yards of soil (being analyzed for potential reuse onsite) excavated from former Building 57 Area and staged within lined areas on site; none transported off-site for disposal to date for SAM 2 activities.

Regulatory Deliverables and Approvals:

- None.

Anticipated Site Work for Next Week:

- Complete placement of backfill in former Building 57 Area.
- Install erosion control matting and coconut fiber logs within former Building 57 Area.
- Vegetation and existing chain link fence removal and installation of erosion controls within former Building 54 Area.
- Initiate TSCA excavations adjacent to former Building 54.
- Continue sampling and analysis activities, monitoring of existing concrete retaining wall along Q Creek and surveying activities.
- Receive additional imported backfill and stone materials.
- Maintain and install additional erosion controls at former Building 54 Area.

Safety and Health:

- Work zone and perimeter air quality monitoring and dust suppression.



**Completed Stone Placement Along Bank of Q Creek
Former Building 57 Area**



Backfilling Former Building 57 Area



Lined Soil Staging Area

Weekly Progress Report #08 – Phase 2 SAM

Period: 9/24/12 - 9/30/12

Contractors on Site and Roles:

ARCADIS US Inc. – Environmental contractor

Land N Sea – Environmental subcontractor

Dennis W. Sklar, Inc. – Surveying

Field Activities Performed:

- Inspected and maintained soil erosion and sediment controls for the site.
- Continued monitoring of the existing concrete retaining wall along Q Creek for movement – none indicated.
- Placed and compacted general fill and topsoil and placed permanent erosion control materials within former Building 57 Area to achieve proper final grades (incomplete) with surveying to confirm and document grades.
- Surveyed limits of proposed TSCA excavations and completed TSCA excavations #6, #3 and #2.
- Initiated proposed TSCA excavations #1, #5 and #4 and encountered subsurface concrete structures that will be removed in order to continue the excavations.
- Encountered subsurface pipes during TSCA excavations; completed pipe removals as necessary.
- Received preliminary post-excavation confirmation soil analytical results for TSCA excavation #6 with results indicating exceedances of remediation objectives; additional soil removal at sidewalls will be conducted with additional confirmation sampling and analyses. Expansion of this excavation will require the need to remove a portion of the existing concrete slabs for former Building #33 and #37.
- Implemented dust suppression via wetting access roads.
- Collected and analyzed post-excavation and waste classification samples.

Waste/Soil Reuse Generation:

- Estimated 102 cubic yards of soil generated from TSCA locations and staged on site for waste characterization and off-site disposal.
- To date, of the estimated 3,190 cubic yards of soil generated from former Building 57 Area regrading activities proposed for reuse, soil analyses indicate approximately 350 cubic yards are not acceptable for reuse and are being characterized for off-site disposal.

Regulatory Deliverables and Approvals:

- None

Anticipated Site Work for Next Week:

- Continue placement and compaction of backfill at former Building 57 Area.
- Continue TSCA location excavations with post-excavation soil sampling and analysis.
- Continue waste characterization sampling and analysis activities, erosion control inspections and maintenance, monitoring of existing concrete retaining wall along Q Creek and surveying activities.
- Additional soil excavation (pending confirmation that remediation objectives in TSCA excavations have been achieved) within former Building 54 Area in preparation for underground storage tank removals.

Safety and Health:

- Work zone and perimeter air quality monitoring and dust suppression.



Fill and Topsoil Placed and Compacted at Former Building 57 Area



Excavating TSCA Location #4

Weekly Progress Report #09 – Phase 2 SAM

Period: 10/1/12 - 10/7/12

Contractors on Site and Roles:

ARCADIS US Inc. – Environmental contractor

Land N Sea – Environmental subcontractor

Dennis W. Sklar, Inc. – Surveying

Field Activities Performed:

- Continued construction of lined soil staging areas.
- Removed concrete slabs within former Building 54 Area proposed for excavation.
- Excavated TSCA Area 5 and Sumps 4, 5 & 6.
- Collected and analyzed post-excavation and waste characterization samples.
- Placed and compacted top soil within former Building 57 Area.
- Placed erosion controls (coir/biologs and erosion control matting) and seeded within former Building 57 Area (in progress).
- Maintained and installed supplemental soil erosion control measures within excavation areas.
- Continued surveying and monitoring of the existing concrete retaining wall along Q Creek for movement – no movement observed.

Waste Removal:

- To date, an estimated 3,210 cubic yards of material from former Building 57 Area; 117 cubic yards from combined TSCA areas; and 30 cubic yards of soil from former Building 54 Area have been excavated and staged within lined areas on site. Approximately 500 gallons of water generated from excavation dewatering are contained on site. To date, no waste materials from Phase 2 SAM activities transported off-site for disposal.

Regulatory Deliverables and Approvals:

- Submitted Weekly Progress Report #08 to USEPA on 10/2/12.

Anticipated Site Work for Next Week:

- Continue TSCA and sump location excavations and confirmatory and waste characterization sampling and analysis.
- Continue soil excavation within former Building 54 Area for slope area mitigation.
- Continue monitoring of existing concrete retaining wall along Q Creek and work zone/perimeter air quality.
- Receive additional imported backfill and stone materials.
- Install additional and maintain existing soil erosion controls.

Safety and Health:

- Implement work zone and perimeter air quality monitoring and dust suppression.



Concrete Removal – Former Building 54 Area Excavations



Loading Excavated Sump Area Soil for Onsite Staging



Restored Surface at Former Building 57 Area

Weekly Progress Report #10 – Phase 2 SAM

Period: 10/8/12 - 10/14/12

Contractors on Site and Roles:

ARCADIS US, Inc. – Environmental contractor

Land N Sea – Environmental subcontractor

Dennis W. Sklar, Inc. – Surveying

Field Activities Performed:

- Continued construction of lined soil staging areas.
- Demolished subsurface concrete former building foundation structures within TSCA excavations and staged debris on site.
- Excavated TSCA #5 location and sumps S4, S5 and S6 and staged material on site.
- Collected and analyzed post-excavation confirmation soil and waste characterization samples.
- Completed temporary backfill and compaction in former sumps S4, S5 and S6 and in TSCA #1 location to allow access for former Building 54 Area slope excavation activities.
- Cleared and grubbed at former Building 54 Area in preparation for slope excavation.
- Continued encountering and removing subsurface pipes during excavation activities.
- Maintained and installed supplemental soil erosion control measures within former Building 54 Area.
- Installed bio-log at top of slope within former Building 57 Area.
- Continued monitoring of the existing concrete retaining wall along Q Creek for movement (none observed) and surveying to construct and document slope mitigation activities.
- Implemented dust suppression via wetting access roads.

Material Generation:

The following materials (estimated) have been generated to date - disposal is pending for those materials designated for off-site disposal:

- Ø 3,210 cu yds of soil/concrete (former Building 57 Area)
- Ø 317 cu yds of soil (TSCA locations)
- Ø 75 cu yds of soil (former Building 54 Area)
- Ø 500 gallons of liquids (Dewatering Activities)

Regulatory Deliverables and Approvals:

Submitted Weekly Progress Report for weekending 10/7/12 on 10/8/12.

Anticipated Site Work for Next Week:

- Continue TSCA location, sumps and former Building 54 Area slope mitigation excavations with post-excavation confirmatory and waste characterization sampling and analyses – expand as needed to achieve Phase 2 SAM objectives.
- Continue monitoring of existing concrete retaining wall along Q Creek and work zone/perimeter air quality.
- Continue surveying for construction and documentation.

Health and Safety:

- Work zone and perimeter air quality monitoring and dust suppression – upgrading PPE as needed.
- Continue competent person excavation inspections.



Unearthed Concrete Vault/Structure Located within TSCA #4 Location - Removal is Pending



Former Building 54 Area Clearing & Grubbing – Preparation for Slope Excavation



TSCA Locations 5 & 6 Excavations Expanded to Remove Soil to Meet Phase 2 SAM Objectives

Weekly Progress Report #11 – Phase 2 SAM

Period: 10/15/12 - 10/21/12

Contractors on Site and Roles:

ARCADIS US Inc. – Environmental contractor

Land N Sea – Environmental subcontractor

Dennis W. Sklar, Inc. – Surveying

Field Activities Performed:

- Continued construction of lined soil staging areas.
- Demolished and removed portions of former Building 33 concrete slab and subsurface structures to allow for expanding TSCA Area excavations.
- Expanded TSCA 4, 5 and 6 Area excavations (based on results of post-excavation confirmation sample analyses).
- Collected and analyzed post-excavation confirmation and waste characterization samples.
- Uncovered, traced and excavated subsurface pipes within former Building 54 Area.
- Cleared and grubbed berm in former Building 54 Area.
- Excavated upper soil within former Building 54 Area for slope mitigation and preparation for UST removals.
- Maintained and installed supplemental soil erosion control measures.
- Installed final erosion control (consisting of coconut fiber logs) at top of slope within former Building 57 Area.
- Continued monitoring of the existing concrete retaining wall along Q Creek for movement – none observed to date.
- Conducted documentation and layout surveying activities.
- Implemented dust suppression via wetting access roads.

Material Generation:

- Estimated 3,210 cubic yards of soil excavated from former Building 57 Area (reuse and a portion designated for off-site disposal), 747 cubic yards of soil/concrete from TSCA Areas and 980 cubic yards of soil/concrete from former Building 54 Area excavated and staged on site. An estimated 817 gallons of liquids from excavation dewatering have been accumulated and less than 1, 55 gallon drum of product removed from an underground pipe also generated. All are awaiting off-site disposal.

Regulatory Deliverables and Approvals:

- Submitted Weekly Progress Report #10 on October 17, 2012 for this project to USEPA

Anticipated Site Work for Next Week:

- Continue former Building 54 Area excavation for slope mitigation, expand TSCA Area excavations as needed to meet project objectives and initiate UST removal actions.
- Continue surveying and sampling and analysis activities.
- Continue monitoring of existing concrete retaining wall along Q Creek and work zone/perimeter air quality.
- Continue erosion and sediment control maintenance.

Safety and Health:

- Continue work zone and perimeter air quality monitoring.
- Continue excavation safety evaluations.



TSCA Area 5 and 6 Excavations



Former Building 54 Area Slope Mitigation Upper Soil Removal



Former Building 57 Area Fiber Log Installations

Weekly Progress Report #12 – Phase 2 SAM

Period: 10/22/12 - 10/28/12

Contractors on Site and Roles:

ARCADIS US Inc. – Environmental contractor

Land N Sea – Environmental subcontractor

Dennis W. Sklar, Inc. – Surveying

Field Activities Performed:

- Demolished and removed portions of former Building 33 concrete slab and subsurface structures to allow for expanding excavations.
- Expanded TSCA Area 4, 5 and 6 excavations to remove soil to meet project objectives.
- Collected and analyzed post-excavation confirmation and waste characterization samples.
- Cleared and grubbed within former Building 54 Area.
- Excavated upper soil within former Building 54 Area for slope mitigation and preparation for underground storage tank (UST) removals.
- Maintained and installed supplemental soil erosion control measures.
- Uncovered remaining USTs and removed USTs #24, #25, #28 and #29/#30 (a spilt tank). Staged waste on site.
- Continued monitoring of the existing concrete retaining wall along Q Creek for movement – none observed to date.
- Shipped approximately 220 tons of nonhazardous soil off-site for disposal.
- Prepared site for hurricane.
- Continued documentation and layout survey activities.
- Implemented dust suppression via wetting access roads.

Off-Site Waste Shipments:

- Estimated project total of 220 tons of nonhazardous soil transported off-site for disposal.

Regulatory Deliverables and Approvals:

- Submitted Weekly Progress Report (week ending 10/21) to USEPA on October 24, 2012.

Anticipated Site Work for Next Week:

- Repair site damage due to hurricane.
- Continue former Building 54 Area excavation for slope mitigation, expand TSCA Area excavations as needed to meet project objectives and continue UST removals (USTs #14 and #15).
- Continue surveying and sampling and analysis activities.
- Continue monitoring existing concrete retaining wall along Q Creek and work zone/perimeter air quality.
- Continue erosion and sediment control maintenance.

Safety and Health:

- Continue work zone and perimeter air quality monitoring.
- Continue excavation safety evaluations.



Soil Excavation at Former Building 54 Area



Removal of UST #29/#30 Contents



Uncovering UST #15

Weekly Progress Report #13 – Phase 2 SAM

Period: 10/29/12 - 11/4/12

Contractors on Site and Roles:

ARCADIS US Inc. – Environmental contractor

Land N Sea – Environmental subcontractor

Dennis W. Sklar, Inc. – Surveying

Field Activities Performed:

- No site work performed Monday through Wednesday due to hurricane.
- Returned to site on Thursday to assess storm-related damages; only minimal site repair work required as a result of hurricane.
- De-watered stockpile storage areas and excavations and contained liquid on site.
- Maintained and installed supplemental soil erosion and sediment control measures within excavation area and along Q Creek.
- Continued monitoring the existing concrete retaining wall along Q Creek for movement – none detected.
- Continued collection and analysis of waste characterization samples.



**Former Building 57 Area Restored Slope – No Damage
Observed Post-Hurricane Sandy**

Off-Site Waste Shipments:

- Estimated total of 220 tons of nonhazardous soil transported off-site for disposal. No waste shipped during this reporting period.

Regulatory Deliverables and Approvals:

- Submitted Weekly Progress Report #12 (week ending 10/28) to USEPA on November 2, 2012.

Anticipated Site Work for Next Week (11/5/12–11/11/12):

- Cleaning and removal of underground storage tanks #14 and #15.
- Continue soil excavation to achieve sub-base for slope mitigation within former Building 54 Area; conduct post-excavation confirmatory soil sampling and analysis.
- Continue monitoring of existing concrete retaining wall along Q Creek and work zone/perimeter air quality.
- Maintain erosion and sediment controls.

Safety and Health:

- Continued work zone and perimeter air quality monitoring.
- Continued excavation safety evaluations.
- Upgraded barriers surrounding excavations.

Weekly Progress Report #14 – Phase 2 SAM

Period: 11/5/12 - 11/11/12

Contractors on Site and Roles:

ARCADIS US Inc. – Environmental Contractor

Land N Sea – Environmental Subcontractor

Field Activities Performed:

- De-watered stockpile storage areas and excavations.
- Cut, cleaned and removed UST #14.
- Excavated soil and subsurface concrete structures within and below UST #14 and #15 Area and staged on site; extended excavation of this area beyond the design subbase to remove volatile organic compound (VOC)-impacted soil.
- Sized and contained UST scrap steel into roll-offs and began scheduling for off-site recycling.
- Continued soil excavation within former Building 54 Area for slope mitigation.
- Maintained and installed supplemental soil erosion control measures; re-installed silt curtain in Q Creek.
- Installed depth gauges in Q Creek and initiated daily monitoring for surface-water levels.
- Continued monitoring the existing concrete retaining wall along Q Creek for movement – none observed.
- Collected and analyzed post excavation and waste classification samples.

Off-Site Waste Shipments:

- To date, 217 tons of nonhazardous soil transported off-site for disposal.

Regulatory Deliverables and Approvals:

- Submitted Weekly Progress Report #13 to USEPA on November 6, 2012.

Anticipated Site Work for Next Week:

- Continue excavation of soil for slope mitigation within former Building 54 Area.
- Begin placement of stone/rip-rap along edge of Q Creek.
- Continue to collect post-excavation and waste classification samples.
- Continue monitoring of existing concrete retaining wall along Q Creek and work zone/perimeter air quality.
- Receive additional backfill and stone materials.
- Install and maintain erosion controls.

Safety and Health:

- Upgraded barriers surrounding excavations.
- Continued work zone and perimeter air quality monitoring.
- Continued excavation safety evaluations.
- Continued to demarcate equipment access and pedestrian access areas.



Soil Excavation from UST #14 & #15 Area



Sizing Concrete Excavated from UST #14 & #15 Area

Weekly Progress Report #15 – Phase 2 SAM

Period: 11/12/12 - 11/18/12

Contractors on Site and Roles:

ARCADIS US Inc. – Environmental contractor

Land N Sea – Environmental subcontractor

Dennis W. Sklar, Inc. – Surveying

Field Activities Performed:

- Excavated soil from former Building 54 Area to reach design subbase grade for slope area mitigation.
- Excavated concrete structures associated with USTs #14, #15, #19 & #20 removals.
- Excavated TSCA Locations #7 and #8.
- Uncovered and removed previously unknown 12-inch diameter pipe associated with concrete vault previously discovered within TSCA Location #4.
- Added kiln dust to interior of vault to solidify aqueous contents and removed solidified vault contents.
- Constructed temporary access road for removal and reconstruction of Q Creek bank at former Building 54 Area.
- Maintained and installed supplemental soil erosion and sediment control measures.
- Continued daily monitoring of creek water levels and monitoring of the existing concrete retaining wall along Q Creek for movement (no wall movement observed).
- Continued collection and analysis of post excavation and waste classification samples.

Off-Site Waste Shipments:

- Estimated total of 870 tons of nonhazardous waste transported off-site for disposal.

Regulatory Deliverables and Approvals:

- Submitted Weekly Progress Report #14 (week ending 11/11) to USEPA on November 14, 2012.

Anticipated Site Work for Next Week:

- Continue soil excavation for slope area mitigation and installation of stone and rip-rap along Q Creek.
- Collect post-excavation and waste classification samples.
- Backfill excavations.
- Continue monitoring existing concrete retaining wall along Q Creek and work zone/perimeter air quality.
- Receive additional backfill and stone materials.
- Install and maintain erosion controls.

Safety and Health:

- Continue work zone and perimeter air quality monitoring.
- Continue excavation safety evaluations.
- Continued to demarcate equipment access and pedestrian access areas.
- Maintained barriers surrounding excavations.



Excavation of Former Building 54 Area Soil for Slope Area Mitigation



Excavation of Former Building 54 Area Soil for Slope Area Mitigation



Excavation of Former Building 54 Area Soil Adjacent to Q Creek

Weekly Progress Report #16 – Phase 2 SAM

Period: 11/19/12 - 11/25/12 (Three-day Work Week)

Contractors on Site and Roles:

ARCADIS US Inc. – Environmental contractor

Land N Sea – Environmental subcontractor

Dennis W. Sklar, Inc. – Surveying

Field Activities Performed:

- Excavated soil within former Building 54 Area for slope mitigation and staged on site for characterization and off-site disposal.
- Placed rip-rap stone along Q Creek.
- Maintained and installed supplemental soil erosion and sediment control measures.
- Continued monitoring existing concrete retaining wall along Q Creek for movement – none observed.
- Continued collection and analysis of post-excavation soil and waste characterization samples.

Off-Site Waste Shipments:

- Estimated total of 407 tons of nonhazardous soil transported off-site for disposal. Other materials are currently awaiting State agency and disposal facility approvals and are anticipated to be shipped off-site within the next 2 weeks.

Regulatory Deliverables and Approvals:

- Submitted Weekly Progress Report #15 (week ending 11/18) to USEPA on November 25, 2012.

Anticipated Site Work for Next Week:

- Continue excavation of soil for slope area mitigation and complete installation of rip-rap along Q Creek.
- Collect post-excavation soil and waste characterization samples.
- Place and compact backfill for slope area mitigation.
- Continue monitoring existing concrete retaining wall along Q Creek and work zone/perimeter air quality.
- Receive additional imported backfill materials.
- Install and maintain erosion controls.

Safety and Health:

- Continue work zone and perimeter air quality monitoring.
- Continue excavation safety evaluations.
- Maintained barriers surrounding excavations.



Former Building 54 Area Soil Excavation Adjacent to Q Creek



Placement of Stone Along Q Creek within Former Building 54 Area



Former Building 54 Area Excavation

Weekly Progress Report #17 – Phase 2 SAM

Period: 11/26/12 - 12/02/12

Contractors on Site and Roles:

ARCADIS US Inc. – Environmental contractor

Land N Sea – Environmental subcontractor

Dennis W. Sklar, Inc. – Surveying

Field Activities Performed:

- Excavated soil within former Building 54 Area for slope mitigation.
- Continued installation of rip-rap stone to reconstruct Q Creek embankment.
- Conducted onsite progress meeting with USEPA on 11/27/12.
- Maintained and installed supplemental soil erosion and sediment control measures.
- Continued monitoring existing concrete retaining wall along Q Creek – no movement observed.
- Collected and analyzed post-excavation soil and waste classification samples.
- Implemented excavation of VOC-impacted soil beyond the design subbase within lower portion of slope at the western portion of former Building 54 Area slope; conducted excavation dewatering as necessary to allow safe soil removal.

Off-Site Waste Shipments:

- Estimated total of 407 tons of nonhazardous soil transported off-site for disposal. Other materials are currently awaiting State agency and disposal facility approvals.

Regulatory Deliverables and Approvals:

- Submitted Weekly Progress Report #16 (week ending 11/25) to USEPA on November 29, 2012.

Anticipated Site Work for Next Week:

- Continue excavation of soil within former Building 54 Area for slope mitigation and to remove VOC-impacted soil beyond the design subbase.
- Dewater to facilitate additional excavation near Q Creek.
- Collect post-excavation and waste classification samples.
- Conduct backfill and compaction operations.
- Continue monitoring existing concrete retaining wall along Q Creek and work zone/perimeter air quality.
- Receive additional backfill and stone materials.
- Install and maintain erosion controls.

Safety and Health:

- Continue work zone and perimeter air quality monitoring.
- Continue excavation safety evaluations.
- Maintain barriers surrounding excavations.



Onsite USEPA Progress Meeting



Completion of Rip-Rap Placement to Reconstruct Q Creek Embankment



Soil Excavation Activities

Weekly Progress Report #18 – Phase 2 SAM

Period: 12/03/12 - 12/09/12

Contractors on Site and Roles:

ARCADIS US Inc. – Environmental contractor

Land N Sea – Environmental subcontractor

Dennis W. Sklar, Inc. – Surveying

Monarch Environmental, Inc. – Vacuum Truck

Field Activities Performed:

- Soil and pipes encountered within former Building 54 Area were excavated and staged onsite for characterization.
- Continued survey of site to document construction and sampling activities.
- Completed placement of rip-rap stone during reconstruction of the Q Creek embankment within former Building 54 Area.
- Backfilled portions of former Building 54 Area where final depths were achieved.
- Maintained soil erosion and sediment controls.
- Continued monitoring the concrete retaining wall along Q Creek for movement (none observed).
- Collected and analyzed post-excavation and waste characterization samples.
- Transported non-hazardous and hazardous aqueous liquids for off-site disposal.

Off-Site Waste Shipments:

- Approximate waste totals transported off-site for disposal (to date) include: 407 tons of nonhazardous soil, 1,477 gallons of non-hazardous wastewater, 5,000 gallons of hazardous wastewater.

Regulatory Deliverables and Approvals:

- Submitted Weekly Progress Report #17 (week ending 12/01) to USEPA on December 5, 2012.

Anticipated Site Work for Next Week:

- Maintain erosion and sediment controls.
- Continue soil excavation and backfilling operations within former Building 54 Area.
- Continue collection and analysis of post-excavation and waste characterization samples.
- Loading and transportation of TSCA waste off-site for disposal to the Chemical Waste Management Model City facility.
- Continue monitoring of existing concrete retaining wall along Q Creek and work zone/perimeter air quality.

Safety and Health:

- Continue work zone and perimeter air quality monitoring.
- Continue excavation safety evaluations.
- Maintain barriers surrounding excavations.



Rip-Rap Stone Placement – Q Creek Embankment



Backfilling Adjacent to Q Creek



Continued Backfilling Adjacent to Q Creek

Weekly Progress Report #19 – Phase 2 SAM

Period: 12/10/12 - 12/16/12

Contractors on Site and Roles:

ARCADIS US Inc. – Environmental contractor

Land N Sea – Environmental subcontractor

Dennis W. Sklar, Inc. – Surveying

Field Activities Performed:

- Loaded solid waste and wastewater for transportation off-site for disposal.
- Decontaminated and demobilized frac tank from the site.
- Continued excavation of soil within former Building 54 Area to achieve subbase grades and soil cleanup objectives, with staging of this soil onsite for characterization and future off-site disposal.
- Continued surveying to document construction and restoration, and to monitor existing concrete retaining wall along Q Creek for movement (none observed).
- Continued backfilling within former Building 54 Area.
- Maintained soil erosion and sediment controls.
- Collected post-excavation and waste-characterization samples for analysis.

Off-Site Waste Shipments:

- Approximate waste totals transported off-site for disposal: 407 tons of nonhazardous soil, 440 tons of TSCA soil, 1,477 gallons of non-hazardous wastewater and 13,947 gallons of hazardous wastewater.

Regulatory Deliverables and Approvals:

- Submitted Weekly Progress Report #18 (week ending 12/09) to USEPA on December 14, 2012.

Anticipated Site Work for Next Week:

- Continue loading waste for off-site transportation and disposal.
- Maintain erosion and sediment controls.
- Continue excavating and backfilling former Building 54 Area.
- Collect post-excavation soil and waste-characterization samples for analysis.
- Continue monitoring of existing concrete retaining wall along Q Creek.

Safety and Health:

- Continue work zone and perimeter air quality monitoring.
- Continue excavation and stockpile safety evaluations.



Loading TSCA Waste for Off-Site Disposal



Former Building 54 Area Q Creek Embankment Reconstruction – Stone Placement



Installing Erosion Control Matting - Surface Restoration at Former Building 54 Area

Weekly Progress Report #20 – Phase 2 SAM

Period: 12/17/12 - 12/23/12

Contractors on Site and Roles:

ARCADIS US Inc. – Environmental contractor

Land N Sea – Environmental subcontractor

Dennis W. Sklar, Inc. – Surveying

Field Activities Performed:

- Loaded dump trucks with excavation waste for off-site disposal.
- Continued backfilling in former Building 54 Area and receiving fill.
- Excavated material from former Building 54 Area to achieve slope mitigation and other project objectives.
- Continued installation of erosion control matting and seeding in former Building 54 Area.
- Decontaminated and demobilized some heavy equipment, water storage tanks, and roll-off dumpsters.
- Continued surveying to provide guidance during construction earthwork and documentation.
- Continued monitoring the existing concrete retaining wall along Q Creek for movement – none observed.
- Collected and analyzed waste characterization samples.

Off-Site Waste Shipments:

- Estimated totals transported off-site for disposal (to date): 1,595 tons of nonhazardous soil, 506 tons of TSCA waste, 1,477 gallons of non-hazardous waste water and 13,947 gallons of hazardous waste water.

Regulatory Deliverables and Approvals:

- Submitted Weekly Progress Report #19 to USEPA on December 20, 2012.

Anticipated Site Work for Next Week:

- Continue backfilling former Building 54 Area.
- Continue loading waste for off-site disposal.
- Continue installation of erosion control matting, seeding and maintenance of erosion and sediment controls.
- Continue post-excavation confirmatory soil and waste characterization sampling and analysis.
- Continue monitoring of existing concrete retaining wall along Q Creek and work zone/perimeter air quality.

Safety and Health:

- Continue work zone and perimeter air quality monitoring.
- Continue excavation and stockpile safety evaluations.
- Continue focus on improving site traffic control..



Waste Loading for Off-Site Disposal



Former Building 54 Area – Restoring Slope



Receiving and Placing Imported Backfill

Weekly Progress Report #21 – Phase 2 SAM

Period: 12/24/12 - 12/30/12

Contractors on Site and Roles:

ARCADIS US Inc. – Environmental contractor

Land N Sea – Environmental subcontractor

Dennis W. Sklar, Inc. – Surveying

Field Activities Performed:

- Site meeting to review site conditions and plan actions to address precipitation events experienced at the site.
- No site work conducted due to holidays and wet soil conditions at the site.

Off-Site Waste Shipments:

- No change since Weekly Progress Report #20 - Estimated totals transported off-site for disposal (to date): 1,595 tons of nonhazardous soil, 506 tons of TSCA waste, 1,477 gallons of non-hazardous waste water and 13,947 gallons of hazardous waste water.

Regulatory Deliverables and Approvals:

- Submitted Weekly Progress Report #20 to USEPA on January 3, 2013.

Anticipated Site Work for Next Week:

- Resume site work on 1/3/13.
- Continue backfilling former Building 54 Area.
- Continue loading wastes for off-site disposal, as trucking is scheduled and approvals are received.
- Maintenance of soil erosion and sediment controls.
- Excavation of soil within former Building 54 Area to achieve slope mitigation and other project objectives.
- Continue post-excavation confirmatory soil and waste characterization sampling and analysis.
- Continue monitoring of existing concrete retaining wall along Q Creek and work zone/perimeter air quality.

Safety and Health:

- Continue work zone and perimeter air quality monitoring.
- Continue excavation and stockpile safety evaluations.
- Continue implementation of site traffic control.



Site Conditions 12/27/12 – Former Building 54 Area Excavation

Weekly Progress Report #22 – Phase 2 SAM

Period: 12/31/12 - 1/6/13

Contractors on Site and Roles:

ARCADIS US Inc. – Environmental contractor

Land N Sea – Environmental subcontractor

Dennis W. Sklar, Inc. – Surveying

Field Activities Performed:

- Resumed work on 1/2/13 after down time at site due to holidays, rain events and wet soil conditions at the site.
- Continued placing and compacting backfill, and placing seed and erosion control matting within former Building 54 Area to construct final grades and restore the area.
- Collected confirmation soil samples at final excavation limits within former Building 54 Area and submitted for laboratory analysis.
- Continued surveying to guide construction activities and for documentation.
- Maintained soil erosion and sediment controls.
- Continued monitoring the concrete retaining wall along Q Creek for movement – none observed.
- Collected and analyzed waste characterization samples.

Off-Site Waste Shipments:

- No Change - Estimated totals transported off-site for disposal (to date): 1,595 tons of nonhazardous soil, 506 tons of TSCA waste, 1,477 gallons of non-hazardous waste water and 13,947 gallons of hazardous waste water.

Regulatory Deliverables and Approvals:

- Submitted Weekly Progress Reports 20 & 21 to USEPA on January 3, 2013

Anticipated Site Work for Next Week:

Former Building 54 Area:

- Complete soil excavation to subbase.
- Receive excavation confirmation soil sample results and determine need to advance excavation.
- Continue backfilling, placement of erosion control matting and seed.
- Load and transport staged, approved soil for proper off-site disposal.
- Continue maintenance of soil erosion and sediment controls.
- Continue monitoring of existing concrete retaining wall along Q Creek and work zone/perimeter air quality.

Safety and Health:

- Continue work zone and perimeter air quality monitoring.
- Continue excavation and stockpile safety evaluations.



Backfilling Former Building 54 Area



Handling of Fill for Backfilling



Installing Erosion Control Matting Over Seeded Topsoil

Weekly Progress Report #23 – Phase 2 SAM

Period: 1/7/13 - 1/13/13

Contractors on Site and Roles:

ARCADIS US Inc. – Environmental contractor

Land N Sea – Environmental subcontractor

Dennis W. Sklar, Inc. – Surveying

Field Activities Performed:

- Completed excavation of soil within former Building 54 Area to meet subbase for slope mitigation and other project objectives.
- Continued placing and compacting backfill, and placing seed and erosion control matting within former Building 54 Area to construct final grades and restore the area.
- Continued surveying to guide construction activities and for documentation.
- Continued monitoring the concrete retaining wall along Q Creek for movement. Movement was not detected.
- Collected and analyzed waste characterization samples.

Off-Site Waste Shipments:

- Estimated totals transported off-site for disposal (to date): 3,500 tons of nonhazardous solid waste, 700 tons of TSCA solid waste, 1,477 gallons of non-hazardous waste water and 12,594 gallons of hazardous waste water. Quantities are estimated and will be updated as actual weight tickets are available.

Regulatory Deliverables and Approvals:

- Submitted Weekly Progress Report 22 for week ending 1/6/13 to USEPA on January 11, 2013.

Anticipated Site Work for Next Week:

- Continue waste load out.
- Complete installation of backfill, topsoil, seed, erosion control matting and bio-logs.
- Decontaminate and demobilize heavy equipment.
- Continue monitoring existing concrete retaining wall along Q Creek and work zone/perimeter air quality.

Safety and Health:

- Continue work zone and perimeter air quality monitoring.



Backfilling Former Building 54 Area



Waste Loading for Off-Site Disposal



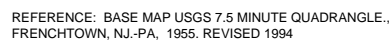
Former Building 54 Area Erosion Control Matting Placement

Appendix B

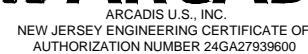
Record Drawings

CURTIS SPECIALTY PAPERS SITE

SLOPE AREA MITIGATION



**INTERNATIONAL PAPER COMPANY AND
GEORGIA-PACIFIC CONSUMER PRODUCTS, LP
BOROUGH OF MILFORD, NEW JERSEY**



COVER

- | | |
|----|--|
| 1 | PRE-CONSTRUCTION CONDITIONS |
| 2 | PHASE 1 SAM EXCAVATION AREA |
| 3 | TSCA-REGULATED MATERIAL EXCAVATION AREAS |
| 4 | EXCAVATION GRADE - FORMER BUILDING 54 AREA |
| 5 | EXCAVATION GRADE - FORMER BUILDING 57 AREA |
| 6 | FINAL GRADE - FORMER BUILDING 54 AREA |
| 7 | FINAL GRADE - FORMER BUILDING 57 AREA |
| 8 | POST-EXCAVATION CONFIRMATORY SAMPLE LOCATIONS -
FORMER BUILDING 54 AREA |
| 9 | POST-EXCAVATION CONFIRMATORY SAMPLE LOCATIONS -
FORMER BUILDING 57 AREA |
| 10 | CROSS-SECTIONS |



- 74 BUILDING NUMBER

DP - DISCHARGE PIPE
UST - UNDERGROUND STORAGE TANK

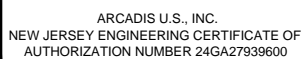
NOTE:
COLOR HAS BEEN USED TO CLARIFY DRAWING CONTENT.
ALL REPRODUCTIONS OF THIS DRAWING MUST BE IN COLOR
AND SHALL EXACTLY MATCH THE ORIGINALLY SIGNED AND
SEALED COLOR VERSION. NON-COLOR, GRAYSCALE OR
MONOCHROME REPRODUCTIONS OF THIS DRAWING SHALL
NOT BE CONSIDERED VALID CONTRACT DOCUMENTS.

1. LOCATION OF DRAINAGE PIPE DP-12 SHIFTED SLIGHTLY EAST TO MAKE VISIBLE ON FIGURE.



THIS DRAWING IS THE PROPERTY OF THE ARCADIS ENTITY IDENTIFIED IN THE TITLE BLOCK
AND MAY NOT BE REUSED OR ALTERED IN WHOLE OR IN PART WITHOUT THE
EXPRESS WRITTEN PERMISSION OF SAME

Designed by	Drawn by	Checked by
AJE	KMD	RK



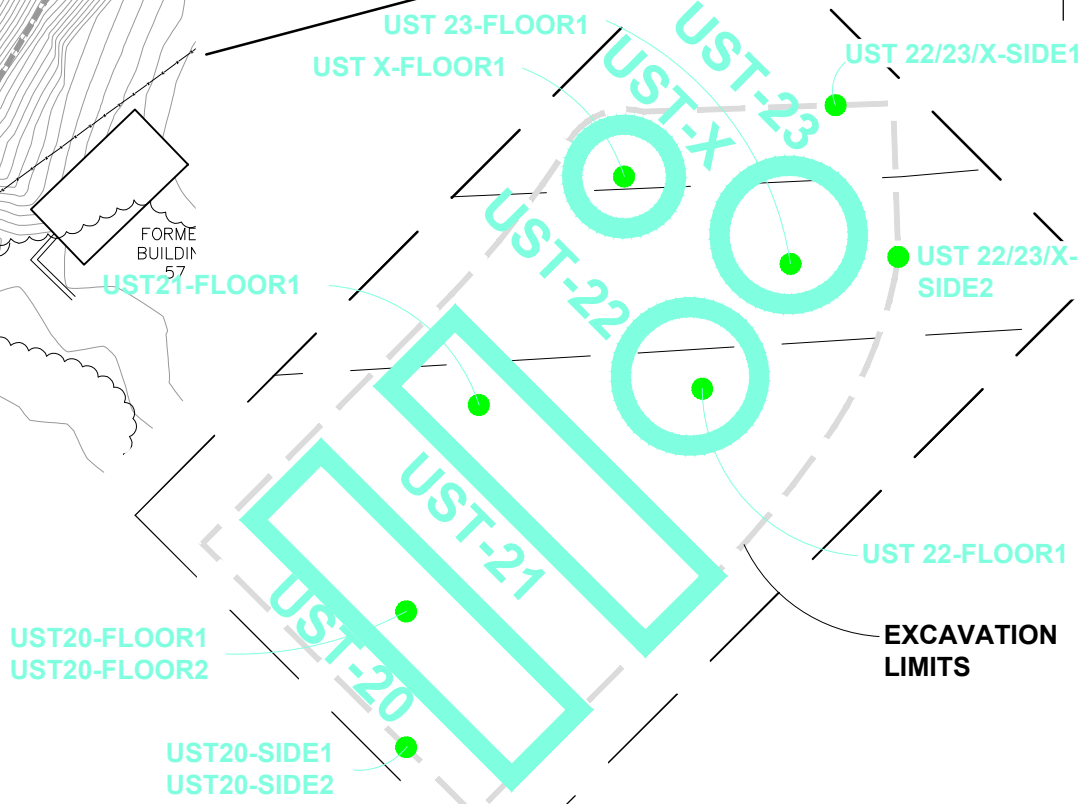
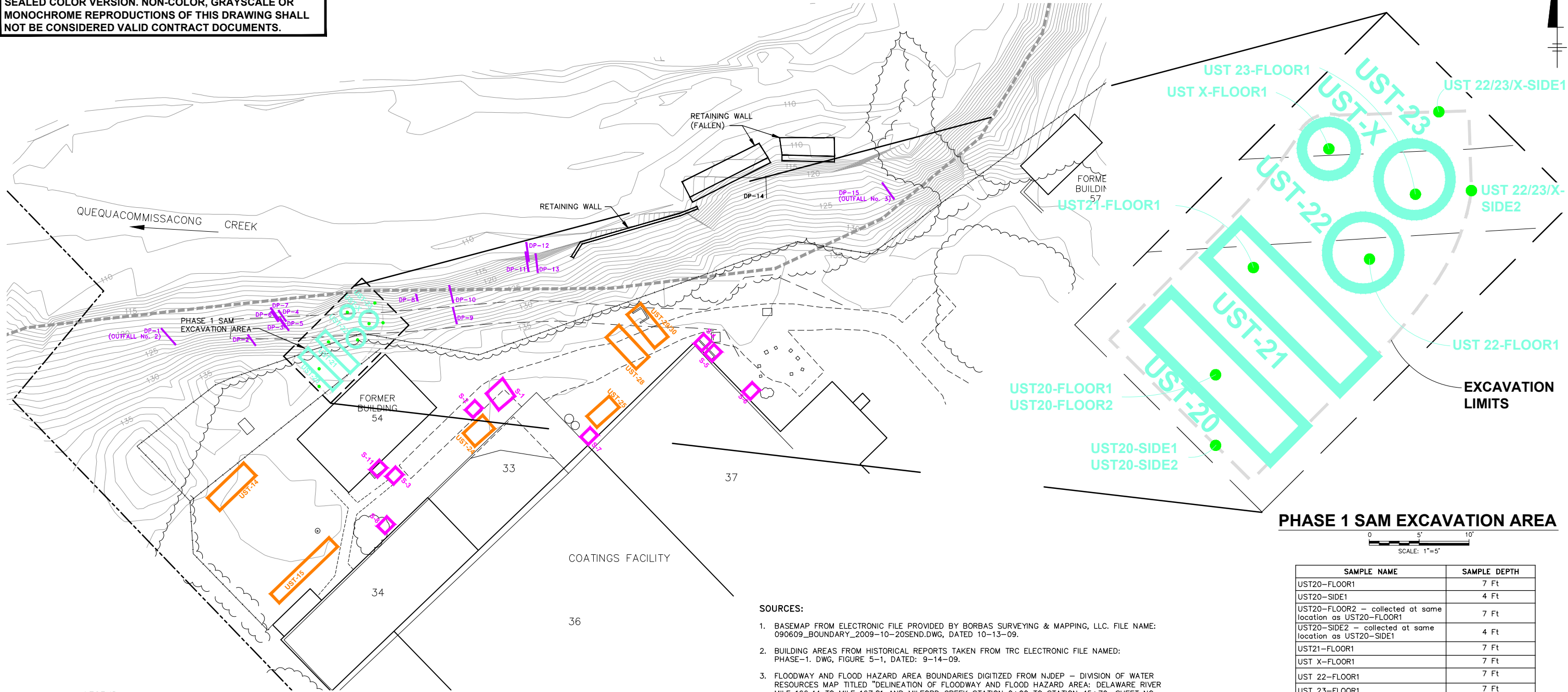
PRE-CONSTRUCTION CONDITIONS

ARCADIS Project No.
B0066137.0207.00103

Date
AUGUST 2013

ARCADIS
8 SOUTH RIVER ROAD
CRANFORD, NJ 08512
TEL: 609.860.8072

NOTE:
COLOR HAS BEEN USED TO CLARIFY DRAWING CONTENT.
ALL REPRODUCTIONS OF THIS DRAWING MUST BE IN COLOR
AND SHALL EXACTLY MATCH THE ORIGINALLY SIGNED AND
SEALED COLOR VERSION. NON-COLOR, GRAYSCALE OR
MONOCHROME REPRODUCTIONS OF THIS DRAWING SHALL
NOT BE CONSIDERED VALID CONTRACT DOCUMENTS.



SOURCES:

- BASEMAP FROM ELECTRONIC FILE PROVIDED BY BORBAS SURVEYING & MAPPING, LLC. FILE NAME: 090609_BOUNDARY_2009-10-20SEND.DWG, DATED 10-13-09.
- BUILDING AREAS FROM HISTORICAL REPORTS TAKEN FROM TRC ELECTRONIC FILE NAMED: PHASE-1. DWG, FIGURE 5-1, DATED: 9-14-09.
- FLOODWAY AND FLOOD HAZARD AREA BOUNDARIES DIGITIZED FROM NJDEP - DIVISION OF WATER RESOURCES MAP TITLED "DELINEATION OF FLOODWAY AND FLOOD HAZARD AREA: DELAWARE RIVER MILE 166.44 TO MILE 167.81 AND MILFORD CREEK STATION 0+00 TO STATION 45+70; SHEET NO. 16" DATED 1978.
- ELEVATION CONTOURS BASED ON POINT LOCATIONS SURVEYED BY DWS, PLS BETWEEN MARCH 12 AND MARCH 22, 2012.
- PIPE LOCATIONS WITHIN EMBANKMENT BASED ON LOCATIONS SURVEYED BY DWS, PLS ON JUNE 5, 2012.

NOTES:

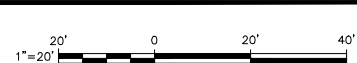
- LOCATION OF DRAINAGE PIPE DP-12 SHIFTED SLIGHTLY EAST TO MAKE VISIBLE ON FIGURE.
- POST-EXCAVATION SAMPLE LOCATIONS AND ELEVATIONS WERE OBTAINED BY USE OF A PORTABLE GLOBAL POSITIONING SYSTEM (GPS) UNIT AT THE TIME OF THE SAMPLE PROCUREMENT AND ARE REPRESENTED HEREIN. HORIZONTAL LOCATION POSITION AND VERTICAL ELEVATIONS ARE MEASURED TO WITHIN ±8 INCHES OF THE ACTUAL LOCATION POSITION AND ELEVATION, WHICH IS THE APPROXIMATE MARGIN OF ERROR FOR THE EQUIPMENT.

LEGEND:

- FLOODWAY BOUNDARY
- PROPERTY BOUNDARY
- PRE-CONSTRUCTION GRADE ELEVATION CONTOUR LINE (1' INTERVAL)
- FENCE
- DRIVEWAY
- TREELINE/BRUSHLINE/DENSE VEGETATION
- BUILDING NUMBER
- LIMITS OF BUILDING SLABS
- ABANDONED UST REMOVED DURING PHASE 1 SAM
- ABANDONED UST REMOVED DURING PHASE 2 SAM
- ABANDONED SUMP REMOVED DURING PHASE 2 SAM
- DISCHARGE PIPE
- DISCHARGE PIPE REMOVED DURING PHASE 2 SAM
- PHASE 1 SAM POST-EXCAVATION CONFIRMATION SAMPLE LOCATION

ABBREVIATIONS:

- DP - DISCHARGE PIPE
UST - UNDERGROUND STORAGE TANK



THIS BAR
REPRESENTS ONE
INCH ON THE
ORIGINAL DRAWING:

USE TO VERIFY
FIGURE
REPRODUCTION
SCALE

No.	Date	Revisions	By	Ckd

THIS DRAWING IS THE PROPERTY OF THE ARCADIS ENTITY IDENTIFIED IN THE TITLE BLOCK
AND MAY NOT BE REUSED OR ALTERED IN WHOLE OR IN PART WITHOUT THE
EXPRESS WRITTEN PERMISSION OF SAME

Professional Engineer's Name STEPHEN R. MONTAGNA, P.E.		
Professional Engineer's No. 35214		
State N.J.	Date Signed	Project Mgr. KAR
Designed by AJE	Drawn by KMD	Checked by RK



ARCADIS U.S., INC.
NEW JERSEY ENGINEERING CERTIFICATE OF
AUTHORIZATION NUMBER 24GA27939600

INTERNATIONAL PAPER COMPANY AND GEORGIA-PACIFIC CONSUMER PRODUCTS, LP • CURTIS SPECIALTY PAPERS SITE
SLOPE AREA MITIGATION RECORD DRAWINGS

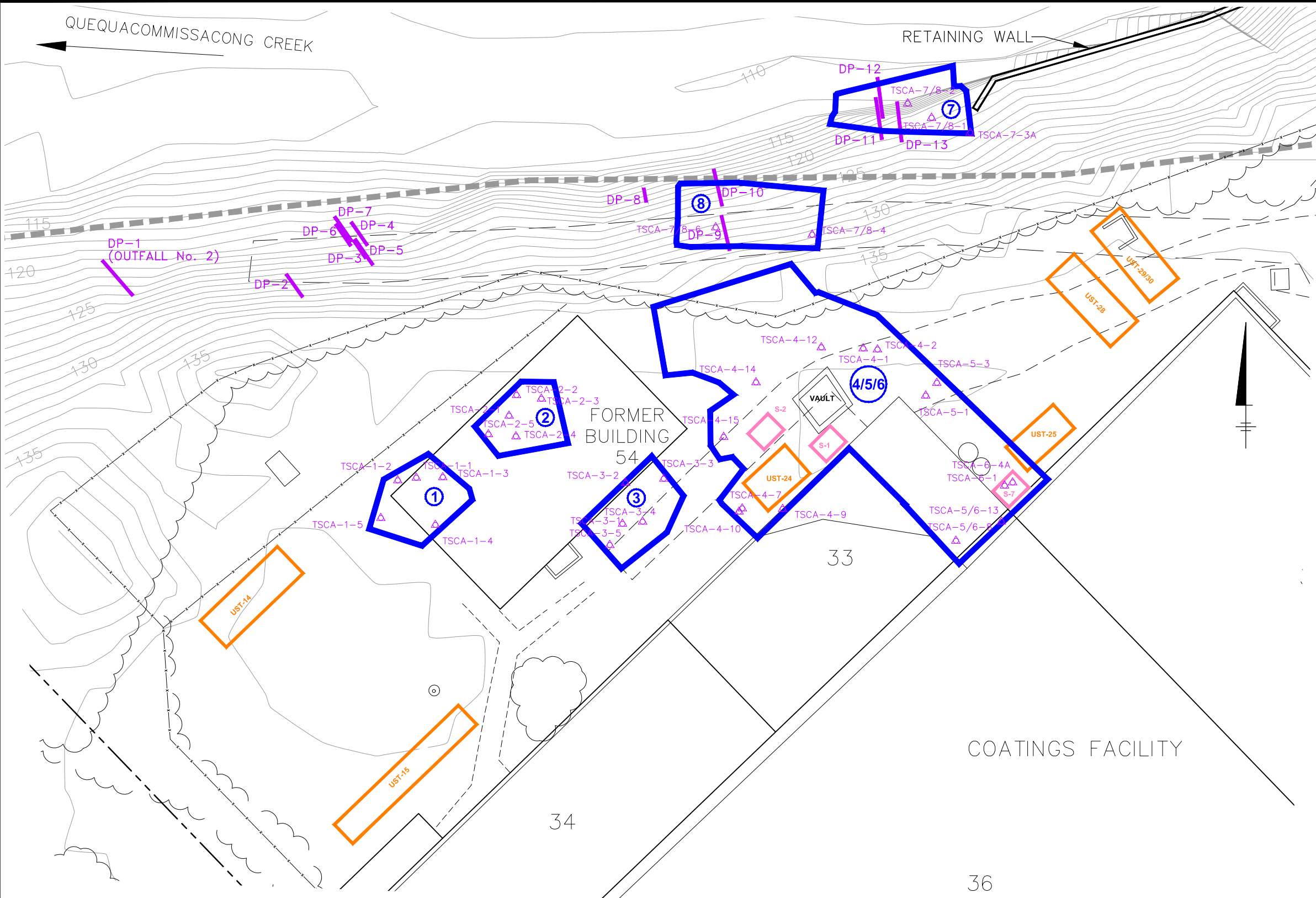
PHASE 1 SAM EXCAVATION AREA

ARCADIS Project No.
B0066137.0207.00103

Date
AUGUST 2013

ARCADIS
8 SOUTH RIVER ROAD
CRANBURY, NJ 08512
TEL: 609.860.8072

CITY: SYRACUSE, NY DIV: GROUP: ENV/CAD DE: T.FATTO, J.MEYER, B.GETTS LD: PIC: C.CHEATHAM PM: K.ROMAINE TM: D.SZUCH LYRON: "OFF-REF"
G:\ENV\CAD\SYRACUSE\PROJECT\19066137\0207001\03\DWG\SAM-AB\66137R03.dwg LAYOUT: 3 SAVED: 8/21/2013 10:16 AM ACADVER: 18.1 (LMS TECH) PAGES: 3
XREFS: 66137X01 66137X02 66137X06
IMAGES:



LEGEND:

- FLOODWAY BOUNDARY
- PROPERTY BOUNDARY
- 125 PRE-CONSTRUCTION GRADE ELEVATION CONTOUR LINE (1' INTERVAL)
- FENCE
- DRIVEWAY
- TREELINE/BRUSHLINE/DENSE VEGETATION
- 74 BUILDING NUMBER
- LIMITS OF BUILDING SLABS
- ABANDONED UST REMOVED DURING PHASE 2 SAM
- APPROXIMATE LOCATION OF SUMP
- DISCHARGE PIPE REMOVED DURING PHASE 2 SAM
- TSCA-REGULATED MATERIAL EXCAVATION AREA
- TSCA SAMPLE LOCATION

ABBREVIATIONS:

- DP - DISCHARGE PIPE
- UST - UNDERGROUND STORAGE TANK

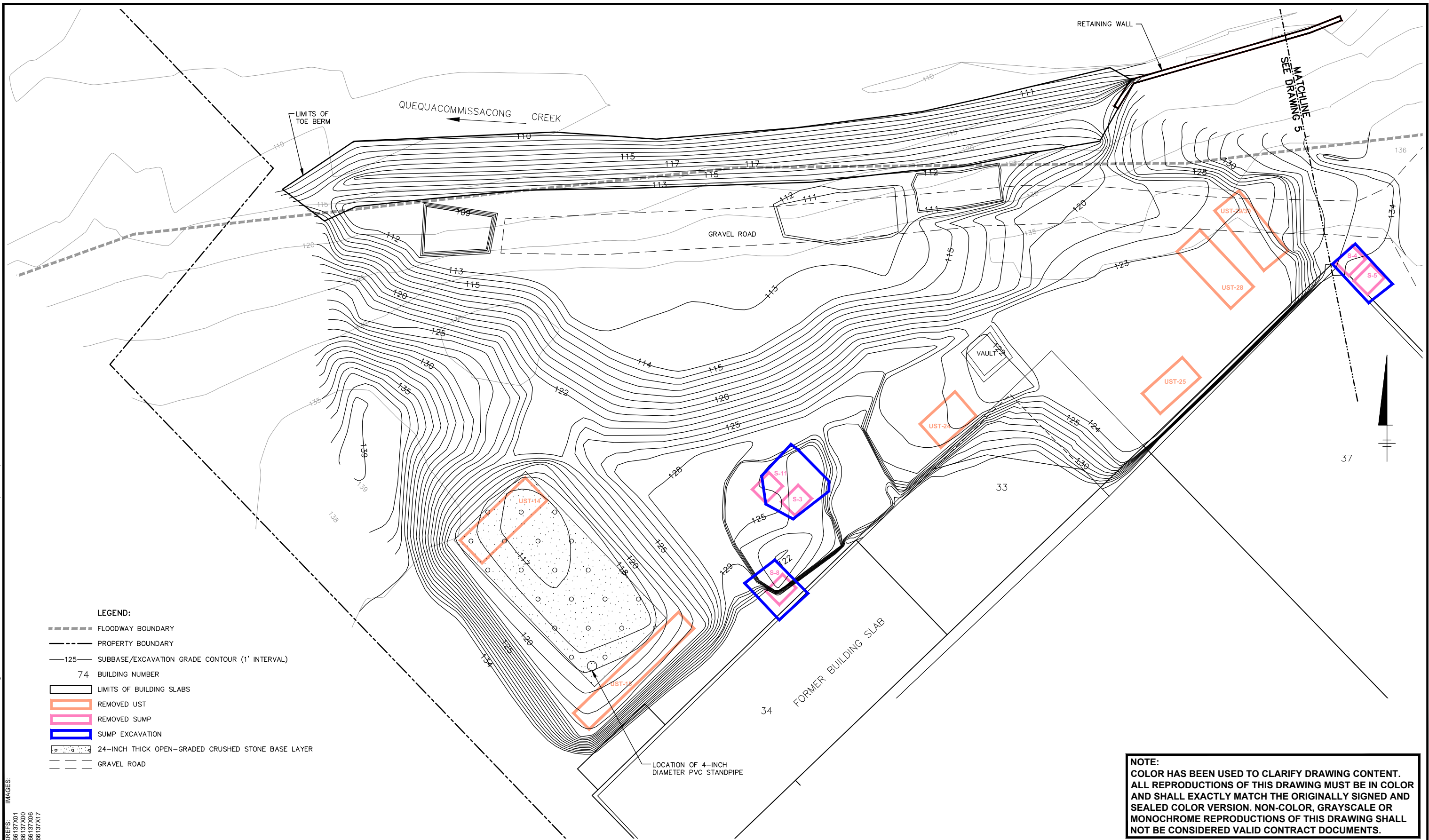
- SOURCES:**
- BASEMAP FROM ELECTRONIC FILE PROVIDED BY BORBAS SURVEYING & MAPPING, LLC. FILE NAME: 090609_BOUNDARY_2009-10-20SEND.DWG, DATED 10-13-09.
 - BUILDING AREAS FROM HISTORICAL REPORTS TAKEN FROM TRC ELECTRONIC FILE NAMED: PHASE-1. DWG, FIGURE 5-1, DATED: 9-14-09.
 - FLOODWAY AND FLOOD HAZARD AREA BOUNDARIES DIGITIZED FROM NJDEP - DIVISION OF WATER RESOURCES MAP TITLED "DELINEATION OF FLOODWAY AND FLOOD HAZARD AREA: DELAWARE RIVER MILE 166.44 TO MILE 167.81 AND MILFORD CREEK STATION 0+00 TO STATION 45+70; SHEET NO. 16" DATED 1978.
 - ELEVATION CONTOURS BASED ON POINT LOCATIONS SURVEYED BY DWS, PLS BETWEEN MARCH 12 AND MARCH 22, 2012.
 - PIPE LOCATIONS WITHIN EMBANKMENT BASED ON LOCATIONS SURVEYED BY DWS, PLS ON JUNE 5, 2012.
- NOTES:**
- LOCATION OF DRAINAGE PIPE DP-12 SHIFTED SLIGHTLY EAST TO MAKE VISIBLE ON FIGURE.
 - POST-EXCAVATION SAMPLE LOCATIONS AND ELEVATIONS WERE OBTAINED BY USE OF A PORTABLE GLOBAL POSITIONING SYSTEM (GPS) UNIT AT THE TIME OF THE SAMPLE PROCUREMENT AND

NOTE:
COLOR HAS BEEN USED TO CLARIFY DRAWING CONTENT. ALL REPRODUCTIONS OF THIS DRAWING MUST BE IN COLOR AND SHALL EXACTLY MATCH THE ORIGINALLY SIGNED AND SEALED COLOR VERSION. NON-COLOR, GRAYSCALE OR MONOCHROME REPRODUCTIONS OF THIS DRAWING SHALL NOT BE CONSIDERED VALID CONTRACT DOCUMENTS.

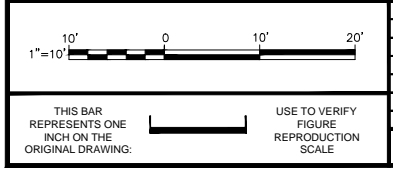
 THIS BAR REPRESENTS ONE INCH ON THE ORIGINAL DRAWING.	<table border="1"><thead><tr><th>No.</th><th>Date</th><th>Revisions</th><th>By</th><th>Ckd</th></tr></thead><tbody><tr><td> </td><td> </td><td> </td><td> </td><td> </td></tr><tr><td> </td><td> </td><td> </td><td> </td><td> </td></tr><tr><td> </td><td> </td><td> </td><td> </td><td> </td></tr></tbody></table>	No.	Date	Revisions	By	Ckd																<table border="1"><tr><td colspan="3">Professional Engineer's Name STEPHEN R. MONTAGNA, P.E.</td></tr><tr><td colspan="3">Professional Engineer's No. 35214</td></tr><tr><td>State N.J.</td><td>Date Signed </td><td>Project Mgr. KAR</td></tr><tr><td>Designed by AJE</td><td>Drawn by KMD</td><td>Checked by RK</td></tr></table>	Professional Engineer's Name STEPHEN R. MONTAGNA, P.E.			Professional Engineer's No. 35214			State N.J.	Date Signed 	Project Mgr. KAR	Designed by AJE	Drawn by KMD	Checked by RK	 ARCADIS U.S., INC. NEW JERSEY ENGINEERING CERTIFICATE OF AUTHORIZATION NUMBER 24GA27939600	TSCA-REGULATED MATERIAL EXCAVATION AREAS	INTERNATIONAL PAPER COMPANY AND GEORGIA-PACIFIC CONSUMER PRODUCTS, LP • CURTIS SPECIALTY PAPERS SITE SLOPE AREA MITIGATION RECORD DRAWINGS	ARCADIS Project No. B0066137.0207.00103
		No.	Date	Revisions	By	Ckd																																
Professional Engineer's Name STEPHEN R. MONTAGNA, P.E.																																						
Professional Engineer's No. 35214																																						
State N.J.	Date Signed 	Project Mgr. KAR																																				
Designed by AJE	Drawn by KMD	Checked by RK																																				
USE TO VERIFY FIGURE REPRODUCTION SCALE	THIS DRAWING IS THE PROPERTY OF THE ARCADIS ENTITY IDENTIFIED IN THE TITLE BLOCK AND MAY NOT BE REUSED OR ALTERED IN WHOLE OR IN PART WITHOUT THE EXPRESS WRITTEN PERMISSION OF SAME	Date AUGUST 2013	ARCADIS 8 SOUTH RIVER ROAD CRANBURY, NJ 08512 TEL: 609.860.8072																																			

3

CITY: SYRACUSE, NY DIV/GROUP: EN/CAD DB: T.FATTO, B.GETTS, K. DAVIS LD: PIC: C.CHEATHAM PM: K.ROMAINE TM: D.SZUCH LYRON: "OFF-REF"
G:\EN\CAD\SYRACUSE\ACT\B006137\020700\03\DWG\SAM-AB\66137R04.dwg LAYOUT: 4. SAVED: 8/7/2013 1:20 PM ACADVER: 181S (LMS TECH) PAGES: 4 PAGES: 4 PAGES: 4 PAGES: 4
XREFS: 66137X01 66137X00 66137X06 66137X17
IMAGES:



NOTE:
COLOR HAS BEEN USED TO CLARIFY DRAWING CONTENT.
ALL REPRODUCTIONS OF THIS DRAWING MUST BE IN COLOR
AND SHALL EXACTLY MATCH THE ORIGINALLY SIGNED AND
SEALED COLOR VERSION. NON-COLOR, GRAYSCALE OR
MONOCHROME REPRODUCTIONS OF THIS DRAWING SHALL
NOT BE CONSIDERED VALID CONTRACT DOCUMENTS.



No.	Date	Revisions	By	Ckd

THIS DRAWING IS THE PROPERTY OF THE ARCADIS ENTITY IDENTIFIED IN THE TITLE BLOCK AND MAY NOT BE REUSED OR ALTERED IN WHOLE OR IN PART WITHOUT THE EXPRESS WRITTEN PERMISSION OF SAME.

Professional Engineer's Name STEPHEN R. MONTAGNA, P.E.		
Professional Engineer's No. 35214		
State N.J.	Date Signed	Project Mgr. KAR
Designed by AJE	Drawn by KMD	Checked by RK

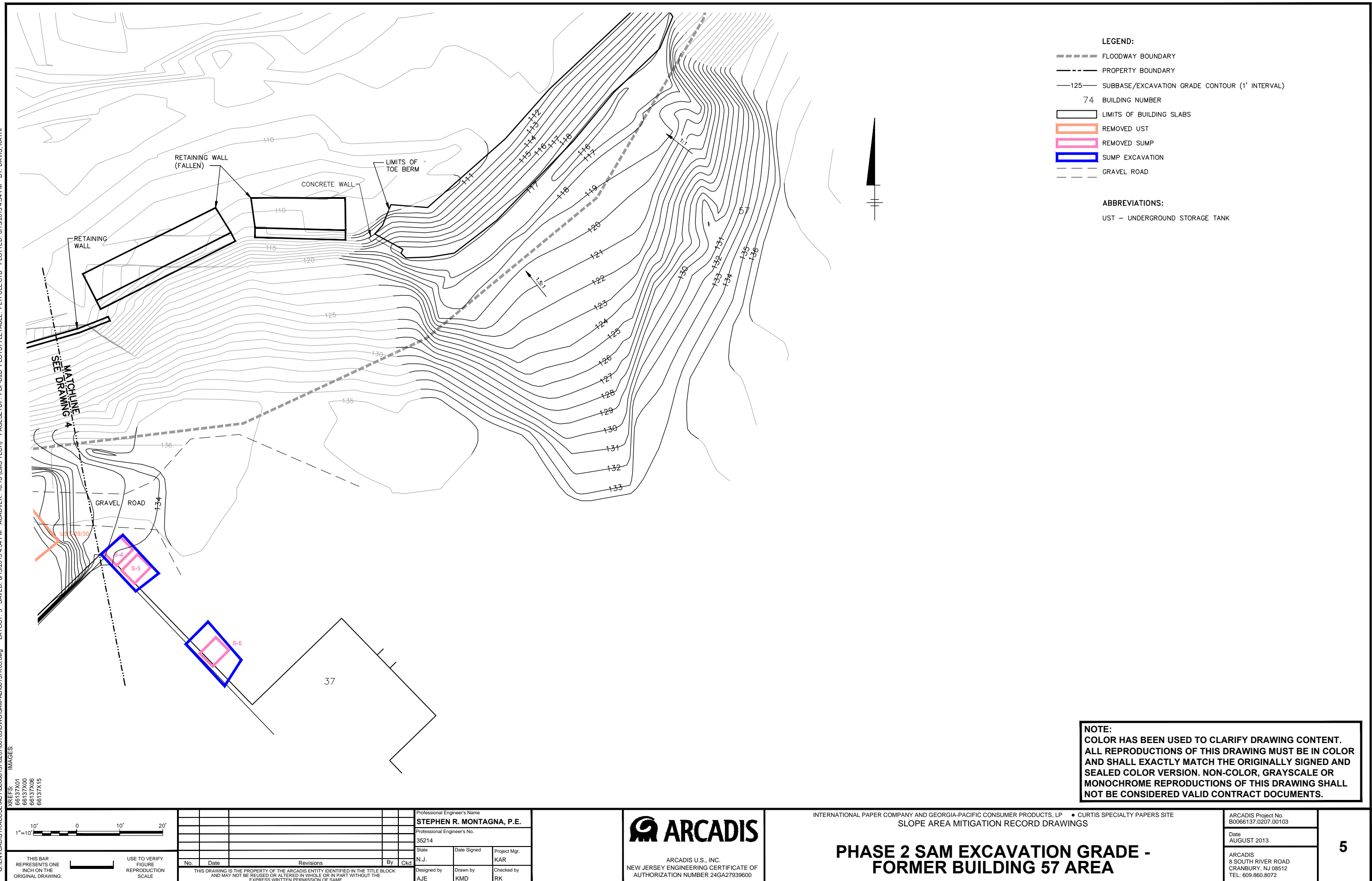
ARCADIS

ARCADIS U.S., INC.
NEW JERSEY ENGINEERING CERTIFICATE OF
AUTHORIZATION NUMBER 24GA27939600

INTERNATIONAL PAPER COMPANY AND GEORGIA-PACIFIC CONSUMER PRODUCTS, LP • CURTIS SPECIALTY PAPERS SITE
SLOPE AREA MITIGATION RECORD DRAWINGS

PHASE 2 SAM EXCAVATION GRADE - FORMER BUILDING 54 AREA

ARCADIS Project No. B0066137.0207.00103
Date AUGUST 2013
ARCADIS 8 SOUTH RIVER ROAD CRANBURY, NJ 08512 TEL: 609.860.8072



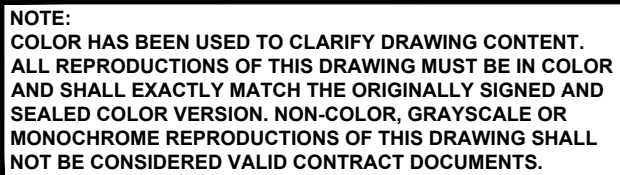
CITY: SYRACUSE, NY DIV/GROUP: EN/CAD DB: T.FATTO, B.GETTS, K. DAVIS LD: PIC: C.CHEATHAM PM: K.ROMAINE TM: D.SZUCH LYRON: "OFF-REF"
G:\EN\CAD\SYRACUSE\ACT1B066137\0207\00103\DWG\SAM-AB\66137R06.dwg LAYOUT: 6 SAVED: 8/7/2013 9:56 AM ACADVER: 1815 (LMS TECH) PAGES: 6
XREFS: 66137X01 66137X00 66137X16 66137X06
IMAGES:



- LEGEND:**
- FLOODWAY BOUNDARY
 - PROPERTY BOUNDARY
 - 125 FINAL GRADE CONTOUR (1' INTERVAL)
 - 74 BUILDING NUMBER
 - LIMITS OF BUILDING SLABS
 - REMOVED UST
 - REMOVED SUMP
 - BIOLOG
 - x- FENCE
 - GRAVEL ROAD

NOTE:
COLOR HAS BEEN USED TO CLARIFY DRAWING CONTENT.
ALL REPRODUCTIONS OF THIS DRAWING MUST BE IN COLOR
AND SHALL EXACTLY MATCH THE ORIGINALLY SIGNED AND
SEALED COLOR VERSION. NON-COLOR, GRAYSCALE OR
MONOCHROME REPRODUCTIONS OF THIS DRAWING SHALL
NOT BE CONSIDERED VALID CONTRACT DOCUMENTS.

					Professional Engineer's Name STEPHEN R. MONTAGNA, P.E.			INTERNATIONAL PAPER COMPANY AND GEORGIA-PACIFIC CONSUMER PRODUCTS, LP • CURTIS SPECIALTY PAPERS SITE SLOPE AREA MITIGATION RECORD DRAWINGS		ARCADIS Project No. B0066137.0207.00103		6	
					Professional Engineer's No. 35214					Date AUGUST 2013			
					State N.J.			Date Signed Project Mgr. KAR		ARCADIS 8 SOUTH RIVER ROAD CRANBURY, NJ 08512 TEL: 609.860.8072			
THIS BAR REPRESENTS ONE INCH ON THE ORIGINAL DRAWING.		USE TO VERIFY FIGURE REPRODUCTION SCALE		No. Date Revisions By Ckd		Designed by AJE		Drawn by KMD		Checked by RK			
THIS DRAWING IS THE PROPERTY OF THE ARCADIS ENTITY IDENTIFIED IN THE TITLE BLOCK AND MAY NOT BE REUSED OR ALTERED IN WHOLE OR IN PART WITHOUT THE EXPRESS WRITTEN PERMISSION OF SAME.													
PHASE 2 SAM FINAL GRADE - FORMER BUILDING 54 AREA													



THIS BAR
REPRESENTS ONE
INCH ON THE
ORIGINAL DRAWING:



USE TO VERIFY
FIGURE
REPRODUCTION
SCALE

No.	Date	Revisions		By
THIS DRAWING IS THE PROPERTY OF THE ARCADIS ENTITY IDENTIFIED IN THE TITLE BLOCK AND MAY NOT BE REUSED OR ALTERED IN WHOLE OR IN PART WITHOUT THE EXPRESS WRITTEN PERMISSION OF SAME.				

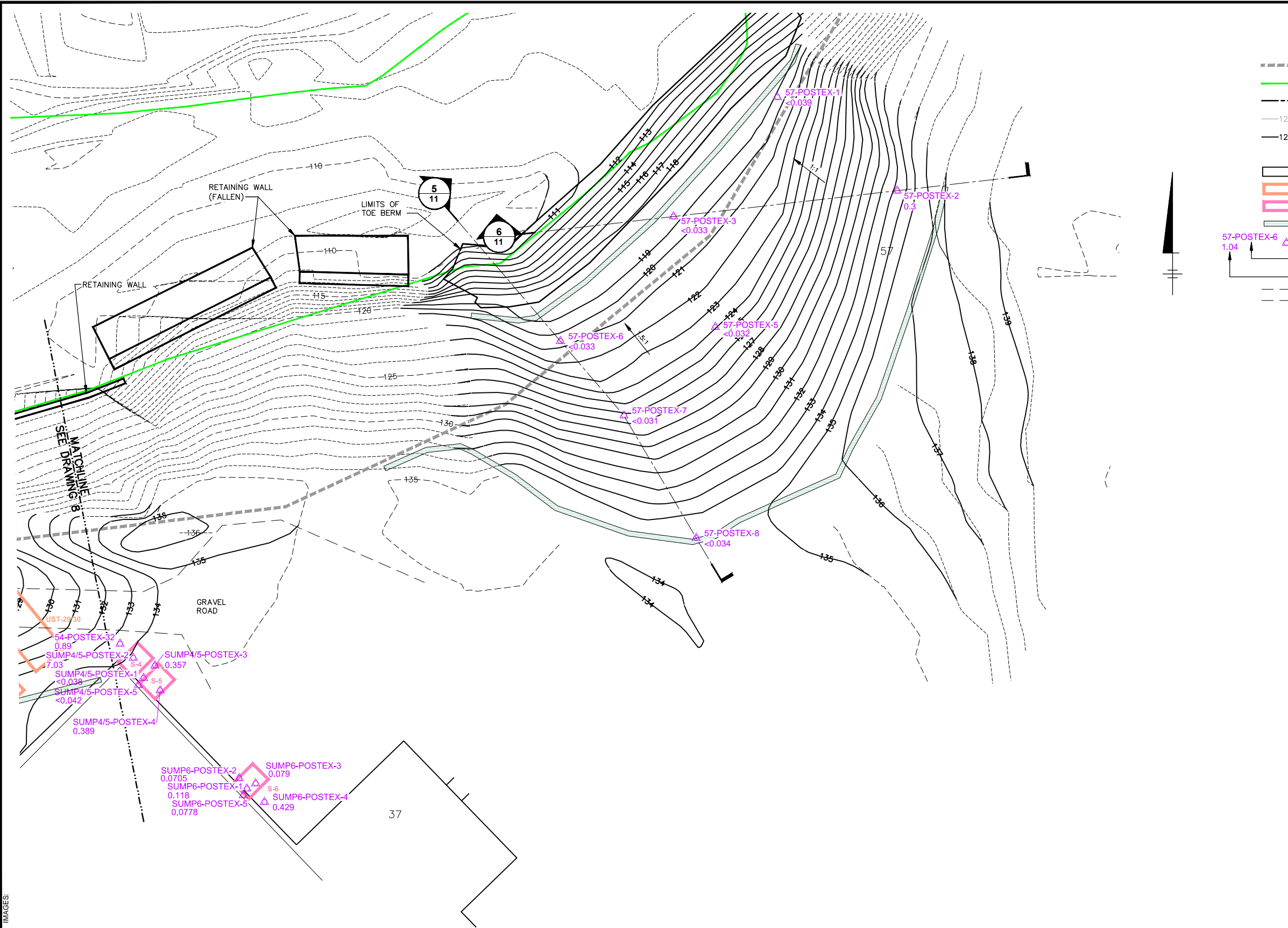
Professional Engineer's Name		
STEPHEN R. MONTAGNA, P.E.		
Professional Engineer's No.		
35214		
State	Date Signed	Project Mgr.
N.J.		KAR
Designed by	Drawn by	Checked by
AJE	KMD	RK

ARCADIS U.S., INC.
NEW JERSEY ENGINEERING CERTIFICATE OF
AUTHORIZATION NUMBER 24GA27939600

POST-EXCAVATION CONFIRMATORY SAMPLE LOCATIONS - FORMER BUILDING 54 AREA

ARCADIS Project No. B0066137.0207.00103
Date AUGUST 2013
ARCADIS 8 SOUTH RIVER ROAD CRANBURY, NJ 08512 TEL: 609.860.8072

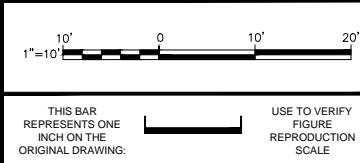
CITY: SYRACUSE, NY DIV: GROUP: ENV/CAD DE: T.FATTO, B.GEETS, K.DAVIS LD: PIC: C.CHEATHAM PK: KROMANE TM: D.SZUCH LYRON: "OFF=REF" G:\ENV\CAD\SYRACUSE\SELECT\1370207\001\03\DWG\SAM-AB\66137R09.dwg LAYOUT: 9 SAVED: 8/21/2013 10:15 AM ACADVER: 18.1 S (LMS TECH) PAGES: 10 PLOT: 8/21/2013 10:15 AM BY: DAVIS, KATHI



- LEGEND:
- FLOODWAY BOUNDARY
 - TOE OF SLOPE/EDGE OF WATER PRIOR TO SLOPE FAILURE
 - PROPERTY BOUNDARY
 - 125 ----- SUBBASE/EXCAVATION GRADE CONTOUR (1' INTERVAL)
 - 125 ----- FINAL GRADE CONTOUR (1' INTERVAL)
 - 74 BUILDING NUMBER
 - LIMITS OF BUILDING SLABS
 - REMOVED UST
 - REMOVED SUMP
 - BIOLOG
 - CONSTRUCTION POST-EXCAVATION SAMPLE (2012-2013)
 - SAMPLE ID
 - PCB ANALYTICAL RESULT IN MG/KG (TOTAL PCBs)
 - GRAVEL ROAD

- NOTES:
- SEE CROSS-SECTIONS FOR SAMPLE ELEVATIONS.
 - POST-EXCAVATION SAMPLE LOCATIONS AND ELEVATIONS WERE OBTAINED BY USE OF A PORTABLE GLOBAL POSITIONING SYSTEM (GPS) UNIT AT THE TIME OF THE SAMPLE PROCUREMENT AND ARE REPRESENTED HEREIN. HORIZONTAL POSITION AND VERTICAL ELEVATIONS ARE MEASURED TO WITHIN ±8 INCHES OF THE ACTUAL LOCATION POSITION AND ELEVATION, WHICH IS THE APPROXIMATE MARGIN OF ERROR FOR THE EQUIPMENT.

NOTE:
COLOR HAS BEEN USED TO CLARIFY DRAWING CONTENT.
ALL REPRODUCTIONS OF THIS DRAWING MUST BE IN COLOR
AND SHALL EXACTLY MATCH THE ORIGINALLY SIGNED AND
SEALED COLOR VERSION. NON-COLOR, GRAYSCALE OR
MONOCHROME REPRODUCTIONS OF THIS DRAWING SHALL
NOT BE CONSIDERED VALID CONTRACT DOCUMENTS.



Revisions		By		Ckd	
No	Date				

Professional Engineer's Name		
STEPHEN R. MONTAGNA, P.E.		
Professional Engineer's No.		
35214		
State	Date Signed	Project Mgr.
N.J.		KAR
Designed by	Drawn by	Checked by
AJE	KMD	RK



ARCADIS U.S., INC.
NEW JERSEY ENGINEERING CERTIFICATE OF
AUTHORIZATION NUMBER 24GA27939600

INTERNATIONAL PAPER COMPANY AND GEORGIA-PACIFIC CONSUMER PRODUCTS, LP • CURTIS SPECIALTY PAPERS SITE
SLOPE AREA MITIGATION RECORD DRAWINGS

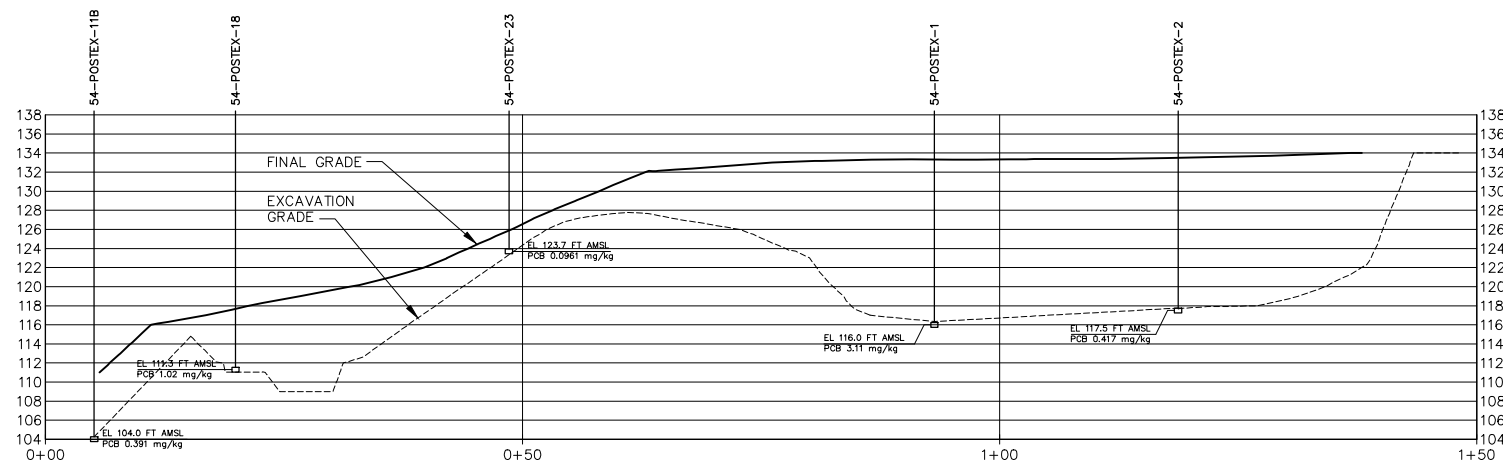
POST-EXCAVATION CONFIRMATORY SAMPLE LOCATIONS - FORMER BUILDING 57 AREA

ARCADIS Project No.
B0066137.0207.00103

Date
AUGUST 2013

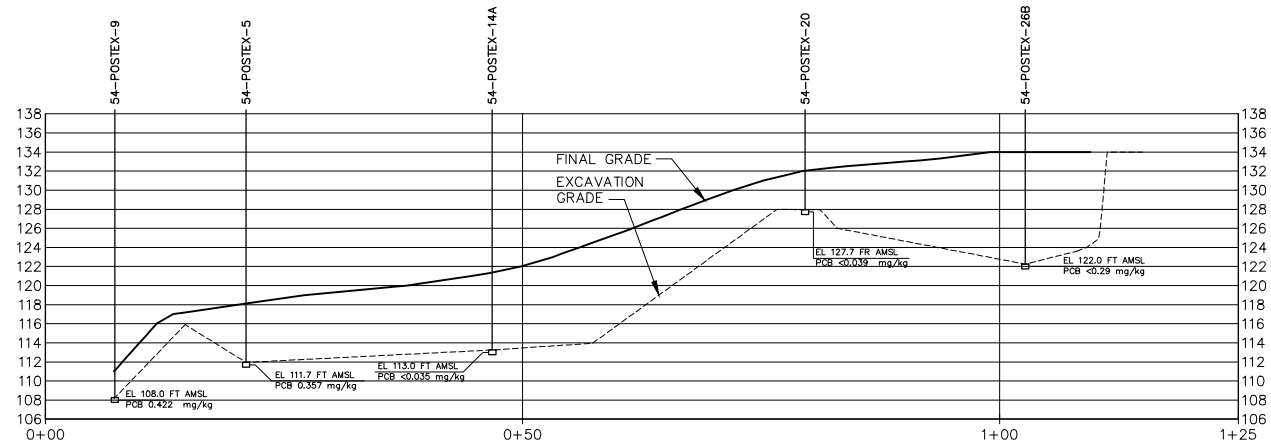
ARCADIS
8 SOUTH RIVER ROAD
CRANBURY, NJ 08512
TEL: 609.860.8072

CITY: SYRACUSE, NY DIV/GROUP: ENVI/CAD DB: T.FATTO, B.GEITTS, DAVIS LD: PIC.C.CHEATHAM PM: K.ROMINE TM: D.SZUCH LV:RON="OFF-REF"
LAYOUT: 10 SAVED: 8/5/2013 3:41 PM ACADVER: 18.1S(LMSTECH) PAGESETUP: --- PLOTSTYLETABLE: PLTCONT.CTB PLOTTED: 8/15/2013 8:59 AM BY: DAVIS, KATHI



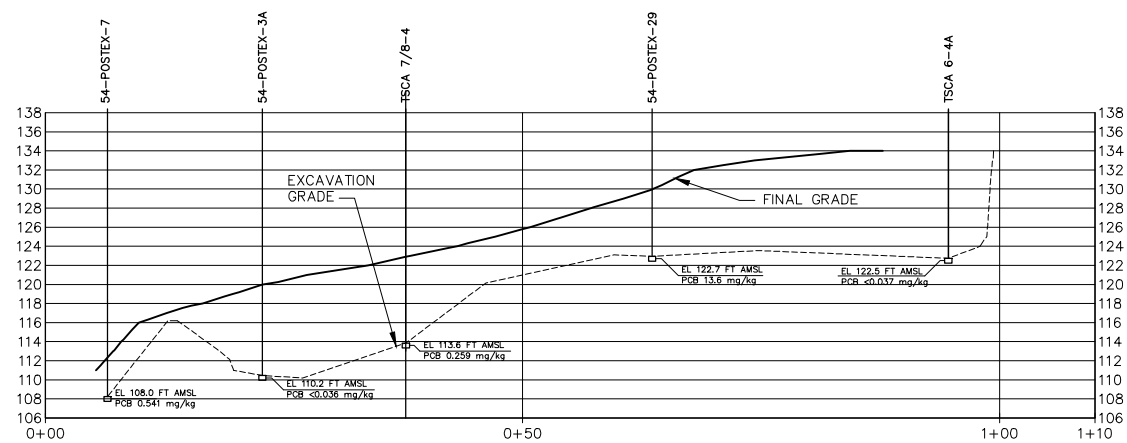
SECTION 1

SCALE: 1" = 10' HORIZONTAL AND VERTICAL



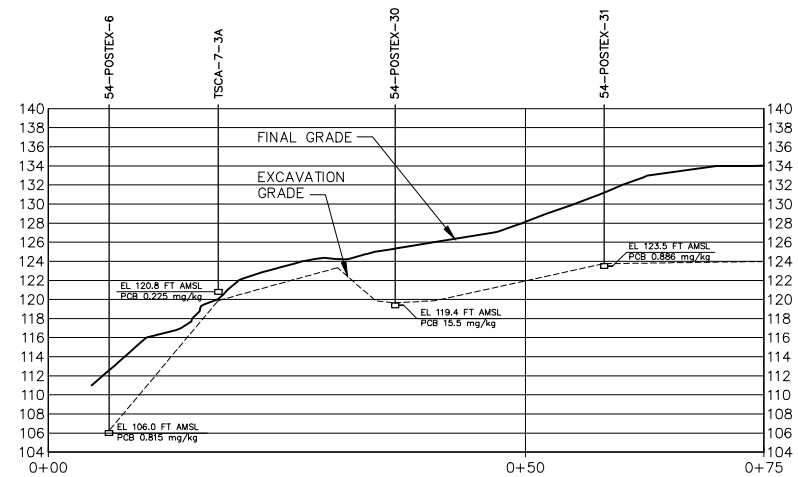
SECTION 2

SCALE: 1" = 10' HORIZONTAL AND VERTICAL



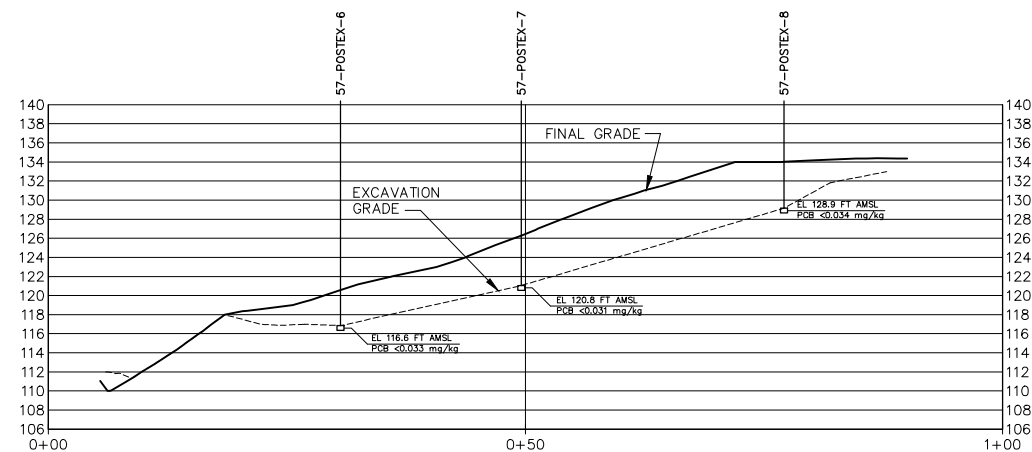
SECTION 3

SCALE: 1" = 10' HORIZONTAL AND VERTICAL



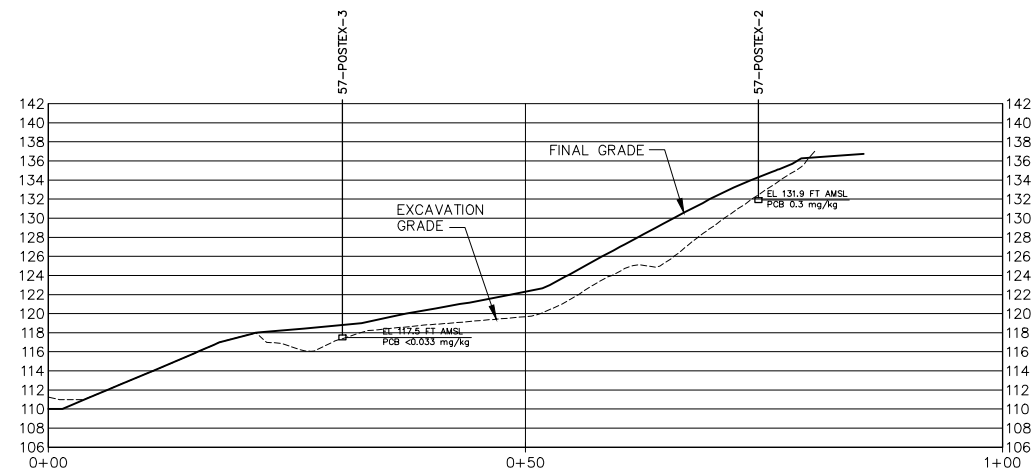
SECTION 4

SCALE: 1" = 10' HORIZONTAL AND VERTICAL



SECTION 5

SCALE: 1" = 10' HORIZONTAL AND VERTICAL



SECTION 6

SCALE: 1" = 10' HORIZONTAL AND VERTICAL



THIS BAR
REPRESENTS ONE
INCH ON THE
ORIGINAL DRAWING:

USE TO VERIFY
FIGURE
REPRODUCTION
SCALE

No.	Date		Revisions		By

THIS DRAWING IS THE PROPERTY OF THE ARCADIS ENTITY IDENTIFIED IN THE TITLE BLOCK AND MAY NOT BE REUSED OR ALTERED IN WHOLE OR IN PART WITHOUT THE EXPRESS WRITTEN PERMISSION OF SAME.

Professional Engineer's Name		
STEPHEN R. MONTAGNA, P.E.		
Professional Engineer's No.		
35214		
State	Date Signed	Project Mgr.
N.J.		KAR
Designed by	Drawn by	Checked by
AJE	KMD	RK



ARCADIS U.S., INC.
NEW JERSEY ENGINEERING CERTIFICATE OF
AUTHORIZATION NUMBER 24GA27939600

INTERNATIONAL PAPER COMPANY AND GEORGIA-PACIFIC CONSUMER PRODUCTS, LP • CURTIS SPECIALTY PAPERS SITE
SLOPE AREA MITIGATION RECORD DRAWINGS

CROSS SECTIONS

ARCADIS Project No.
B0066137.0207.00103

Date
AUGUST 2013

ARCADIS
8 SOUTH RIVER ROAD
CRANBURY, NJ 08512
TEL: 609.860.8072