

Table E-1
Ambient Air Monitoring Program - Total Detectable PCB Homologues

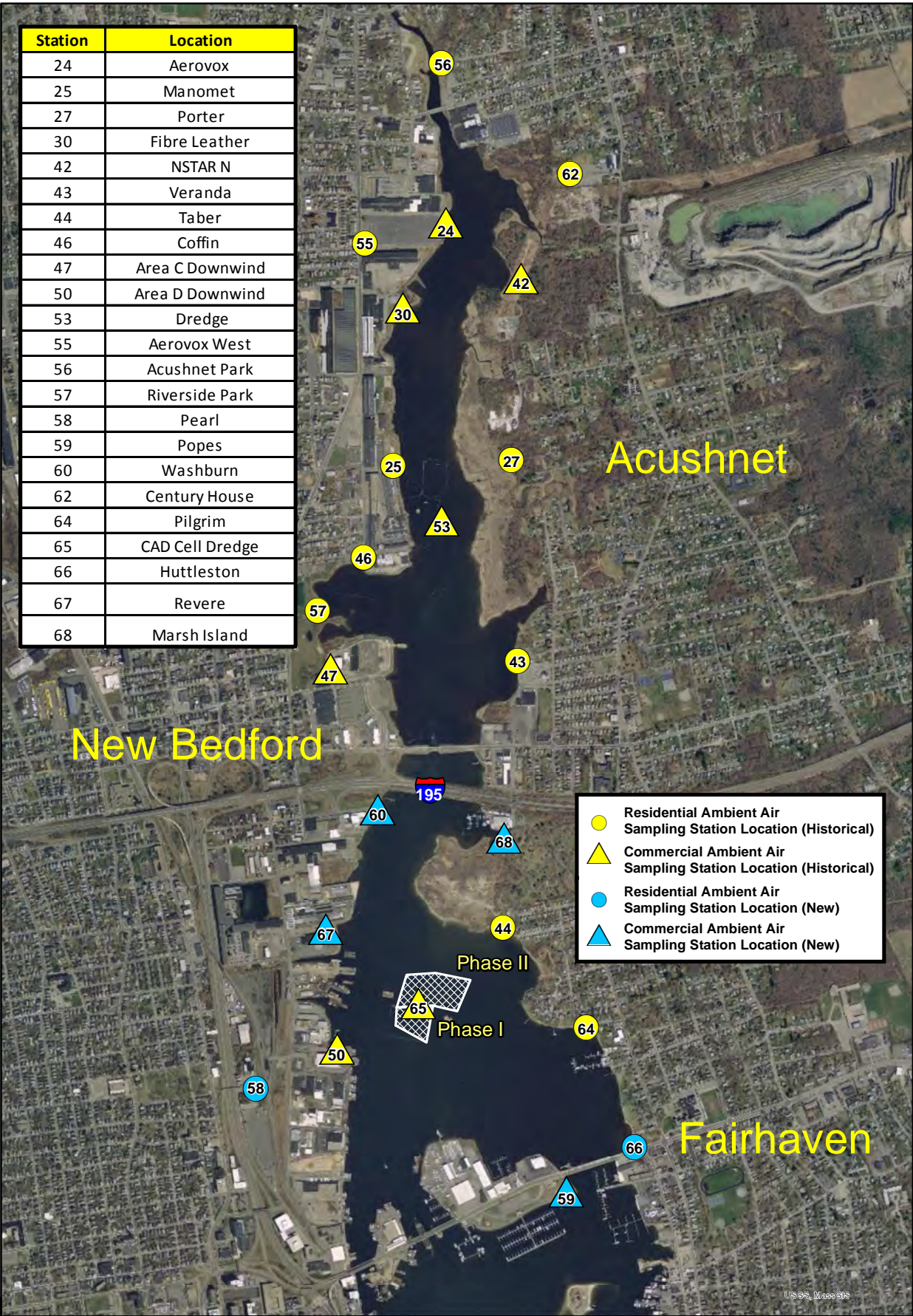
Sampling Date	PCB Concentration by Location (ng/m ³ in 24-hour time-weighted average) ¹																															
	24	25	25	27	30 Fibre	42	43	44	46	Area C			Area D			53	55	56	57	58 Pearl	59 Popes	60	61	62	63	64	65		66	67	68	
	Aerovox	Manomet	Cliftex	Porter	Leather	NSTAR North	Veranda	Taber	Coffin	47	48	49	50	51	52	Dredge	Aerovox West	Acushnet Park	Riverside Park				South Fence	Century House	Boathouse	Pilgrim	LHCC Dredge		Huttleston	Revere	Marsh Island	
09/26/17	NS	NS		NS	NS	NS	34	6	NS	42.9/25d	NS	NS	46	NS	NS	NS	NS		NS	6	13	48				15	33	ND	26	NS	2017 Lower Harbor Best Value remedial event. Unvalidated Results.	
09/13/17	NS	82		35	41	30	NS	NS	NS	8/15d	NS	NS	16	NS	NS	NS	NS		NS	NS	NS	NS				NS	NS	NS	NS	NS	2017 Cable Crossing background event. Unvalidated Results.	
08/24/17	NS	NS		NS	NS	NS	NS	7.57/24 .4d	NS	NS	NS	NS	NS	NS	NS	NS	NS		NS	NS	NS	3.82				NS	NS	NS	16.9	38.6	2017 Marsh Island Excavation results. Unvalidated Results	
07/19/17	NS	NS		NS	NS	NS	70.8	21.1	NS	34.2/18.8 d	NS	NS	9.38	NS	NS	NS	NS		NS	14.0	13.0	44.7				42.4	NS	26.8	17.6	49.4	2017 Lower Harbor Best Value/Marsh Island background event. Station 50 Area D ran for 878 minutes, but was retained because it ran for more than 12 hours. Unvalidated Results.	
04/03/17	NS	4.79		ND _R	NS	NS	3.60	ND _R	2.54	2.88	NS	NS	ND _R	NS	NS	ND _R	NS		NS	ND _R	3.01	ND _R				ND _R	NS	ND _R	ND _R		2017 Upper Harbor Dredging-Lower Harbor CAD Cell filling. The pump at Area D failed by mid-afternoon. The pump used on the dredge was removed after 8 hours and placed at Area D. Both Area D and the dredge were monitored for their full time intervals. The pump for the duplicate at Area C shut down sometime after inspection. Because it didn't run for at least 12 hours, the sample was discarded. Due to a laboratory error, all ND results (less than 1.39 ng/m ³) were rejected as a result of data validation. These are indicated by ND _R .	
03/29/17	NS	NS		NS	NS	NS	5.94	NS	ND	7.15/7.67 d	NS	NS	NS	NS	NS	NS	NS		ND	NS	NS	NS				NS	NS	NS	NS		2017 Upper Harbor Excavation PMC results. Unvalidated Results.	
03/08/17	NS	6.92		11.5	NS	NS	29.9	2.00	15.2	<1.37/ <1.39d	NS	NS	<1.39	NS	NS	71.9	NS		NS	<1.39	<1.39	<1.38				12.8	NS	5.35	<1.39		2017 Upper harbor dredging lower harbor CAD cell placements. Note Pearl (#58) pump had stopped in mid-collection. The dredge pump (#53) had only run for 40 minutes prior to shutdown. The dredge pump (#53) was placed at #58 Pearl for remainder of day to collect a 6.5 m ³ sample. The dredge pump (#53) was placed onboard the dredge the following day (3/9/17) to collect a total sample of 2.15 m ³ . This was also the first round that was analyzed entirely by the low resolution mass spec method.	
02/23/17	NS	NS		NS	NS	NS	4.03	NS	22.7	2.40	NS	NS	NS	NS	NS	NS	NS		1.68	NS	NS	NS				NS	NS	NS	NS		2017 Upper Harbor Excavation PMC results. The duplicate pump for Station #47 Area C failed and no duplicate sample was submitted for analysis. Unvalidated results.	
01/25/17	NS	4.53		2.57	NS	NS	11.4	2.67	9.41	2.43 / 2.65d	NS	NS	2.66	NS	NS	6.35	NS		NS	0.803	NS	6.58				2.91	NS	3.84	3.07		2017 Upper harbor dredging lower harbor CAD cell placements.	
01/12/17	NS	NS		NS	NS	NS	18.2	NS	15.9	1.90/1.90 d	NS	NS	NS	NS	NS	NS	NS		<0.061	NS	NS	NS				NS	NS	NS	NS		2017 Upper Harbor Excavation PMC results.	
12/06/16	NS	NS		NS	NS	NS	3.56	0.679	NS	5.32/5.10 d	NS	NS	5.41	NS	NS	NS	NS		NS	NS	1.57	6.08				1.14	11.7	0.48	4.86		2016 Lower Harbor Dredging in Moby Dick Marina Area A36.	
12/01/16	NS	NS		NS	NS	NS	19.7	NS	1.04	1.10 / 1.21d	NS	NS	NS	NS	NS	NS	NS		0.0007	NS	NS	NS				NS	NS	NS	NS		2016 Upper Harbor Excavation PMC results.	
11/10/16	NS	NS		NS	NS	NS	13.7	NS	4.72	1.64/1.63 d	NS	NS	NS	NS	NS	NS	NS		0.658	NS	NS	NS				NS	NS	NS	NS		2016 Upper Harbor Pre- excavation PMC results.	
11/07/16	NS	NS		NS	NS	NS	6.26	4.07	NS	3.38	NS	NS	5.82/3.75d	NS	NS	NS	NS			0.416	3.55	7.29				2.10	3.19	NS	5.57		2016 Lower Harbor Dredging in Area A34. Dredge was sampled.	
10/19/16	NS	NS		NS	NS	NS	85.2	18.2	NS	26.2	NS	NS	21.1/24.4d	NS	NS	NS	NS			3.89	13.0	30.2				10.6	17.1	NS	22.9		2016 Lower Harbor Dredging in Area A34. Dredge was sampled.	
09/20/16	NS	NS		NS	NS	NS	35.3	18.9	NS	21.4	NS	NS	20.6/22.0d	NS	NS	NS	NS			2.50	NS	59.5				15.7	37.4	NS	25.9		2016 Lower Harbor Dredging in Area A34. Dredge was sampled.	
08/18/16	NS	NS		NS	NS	NS	97.6	19.1	NS	17.1/17.1 d	NS	NS	6.56	NS	NS	NS	NS			3.24	10.5	12.6				11.6	30.1	11.6	9.95		2016 Lower Harbor Dredging in Area 35B. Dredge was sampled.	
08/11/16	NS	61.1		32.2	35.2/39.2d	35.6	NS	NS	NS	NS	NS	NS	NS	NS	NS	704	NS				NS	NS	NS				NS	NS	NS	NS		2016 Upper Harbor Debris Removal. Debris Barge was sampled.

Table E-1
Ambient Air Monitoring Program - Total Detectable PCB Homologues

Sampling Date	PCB Concentration by Location (ng/m ³ in 24-hour time-weighted average) ¹																																	
	24 Aerovox	25 Manomet	25 Cliftex	27 Porter	30 Fibre Leather	42 NSTAR North	43 Veranda	44 Taber	46 Coffin	Area C			Area D			53 Dredge	55 Aerovox West	56 Acushnet Park	57 Riverside Park	58 Pearl	59 Popes	60 Wash- burn	61 South Fence	62 Century House	63 Boathouse	64 Pilgrim	65 LHCC Dredge	66 Huttle- ston	67 Rever e	68 Marsh Island				
											47	48	49	50	51	52																		
10/6/2005	1,820	NS	251		NS	119			130	NS	60.1	114	81.7	NS	NS	6,320	222	180															2005 Hydraulic Dredging.	
9/29/2005	383	NS	104		NS	5.28			124	NS	17.3	44.2	24.2	NS	NS	391	87	77.9																
9/23/2005	178	NS	35.2		NS	83.3			115	NS	19.1	97	0.26	NS	NS	780	2.64	23.9																
9/15/2005	1490	NS	58.2		NS	22.5			99.8	NS	14.9	83.6	0.52	NS	NS	1280	37.6	102																
8/11/2005	216	NS	103		NS	25.9			37.2	NS	NS	29.3	NS	NS	21.3	NA	42.1	49.9																
12/3/2004	30	NS	27		NS	40			15	22	NS	26	22	NS	31	NA	9.33	1.52																2005 Pre-Dredge Samples.
11/5/2004	578	NS	61		NS	73			80	NS	NS	28	NS	NS	NS	351	28.4	39.1																2004 Post-Dredge Operation.
10/19/2004	559	NS	259		NS	NS			36	47	48	66	17	74	100	704	NS	NS																
9/28/2004	9,560	NS	423		NS	NS			342	35	165	207	80	75	115	2,730	NS	NS																
9/23/2004	588	NS	97		NS	NS			5	7	10	17	6	5	19	1,210	NS	NS																
9/14/2004	1,450	NS	229		NS	NS			48	64	64	86	38	39	61	98	NS	NS																
9/9/2004	1,020	NS	167		NS	NS			145	28	37	56	20	16	47	723	NS	NS																
6/29/2004	2,290	NS	NS		NS	NS			NS	NS	NS	NS	NS	NS	NS	NS	NS	NS																
March-May 2000	76	NS	35		NS	29			35	61	61	61	6.8	6.8	6.8		NS	NS																
Dec 1999- Feb 2000	32	NS	3.2		NS	9.9			3.2	89	89	89	3.4	3.4	3.4		NS	NS																
Sept-Nov 1999	67	NS	22		NS	24			22	43	43	43	5.9	5.9	5.9		5.2	5.2																
June-August 1999	130	NS	46		NS	31			46	33	33	33	12	12	12		NS	NS																

Notes:
d = field duplicate result
NA = sample collected but not analyzed
ng/m³ = nanograms per cubic meter of air
NS = not sampled
PCB = polychlorinated biphenyl
ND = no detections (non-detect)
Sample station with gray blocking is a newer station added to the air sampling program or discontinued station (no activity).
P = Pending results
¹24-hour time-weighted average does not apply to Stations #53 and #65 (dredge/barge) which are on a 8-hr collection period

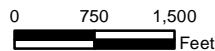
Station	Location
24	Aerovox
25	Manomet
27	Porter
30	Fibre Leather
42	NSTAR N
43	Veranda
44	Taber
46	Coffin
47	Area C Downwind
50	Area D Downwind
53	Dredge
55	Aerovox West
56	Acushnet Park
57	Riverside Park
58	Pearl
59	Popes
60	Washburn
62	Century House
64	Pilgrim
65	CAD Cell Dredge
66	Huttleston
67	Revere
68	Marsh Island



Legend

 EPA CAD CELL

Aerial Photography MASSGIS 2014



1:21,600

JACOBS

Available Ambient Air
Sampling Station
Locations

New Bedford Harbor Superfund Site

NAME: jacobn

DATE: 8/16/2017

Figure

Path: Y:\NBH\Projects\3585G\00\12070814\AcGIS\NBH_ambient_sampling_stations_20170814.mxd