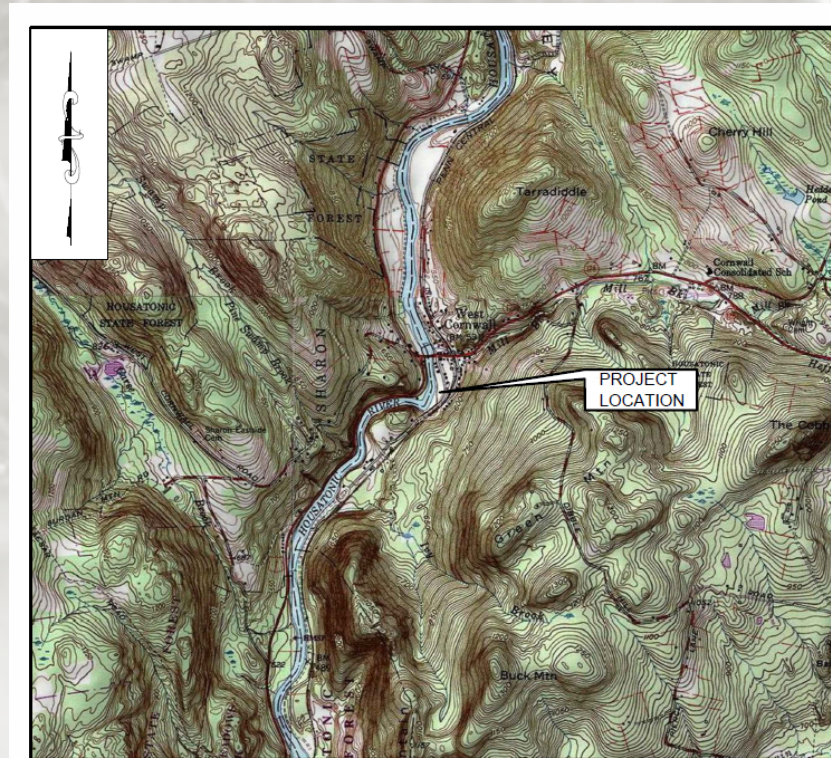


# River Access Enhancement at The Bend

## West Cornwall

April 26<sup>th</sup>, 2017 - EPA Housatonic River Citizens Coordinating Council  
Mike Jastremski – Watershed Conservation Director



VICINITY MAP

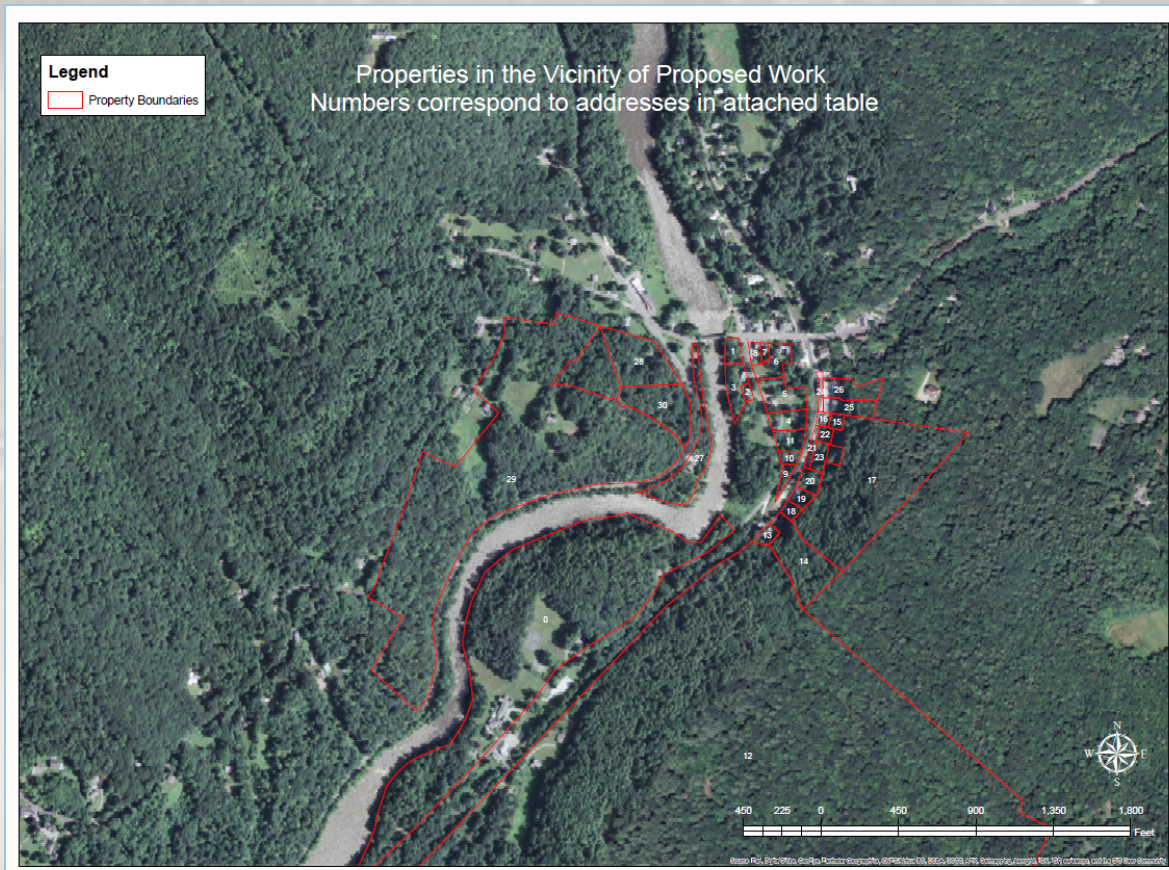


[watershed conservation](http://www.hva.org)



# Project Background

Located on CL+P (now Eversource) property in West Cornwall

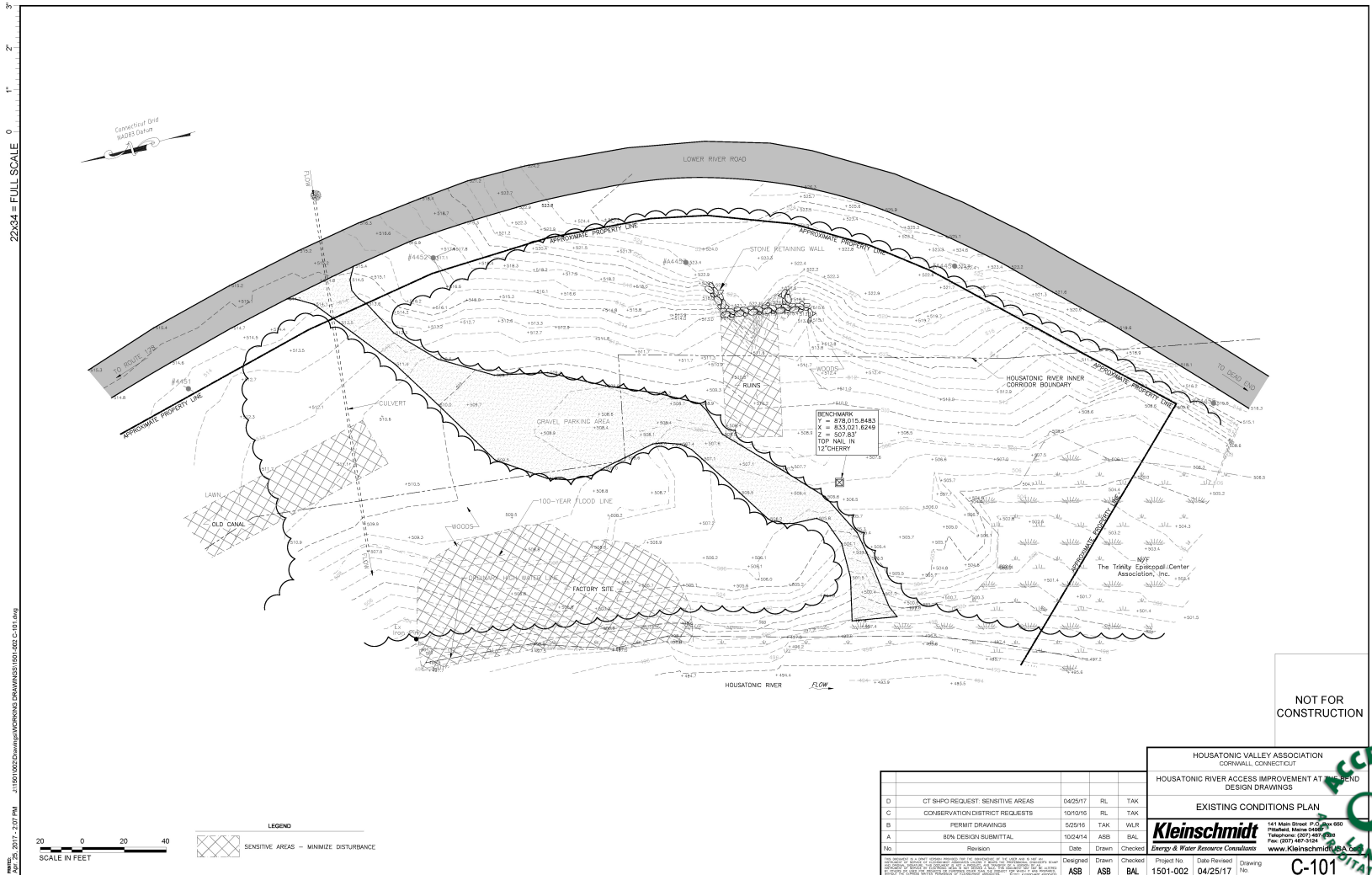


# Project Background

- Improvement of informal access
- Initial proposal to Housatonic NRD in 2007
- Included ADA accessible fishing platform, ramp
- Several iterations since then



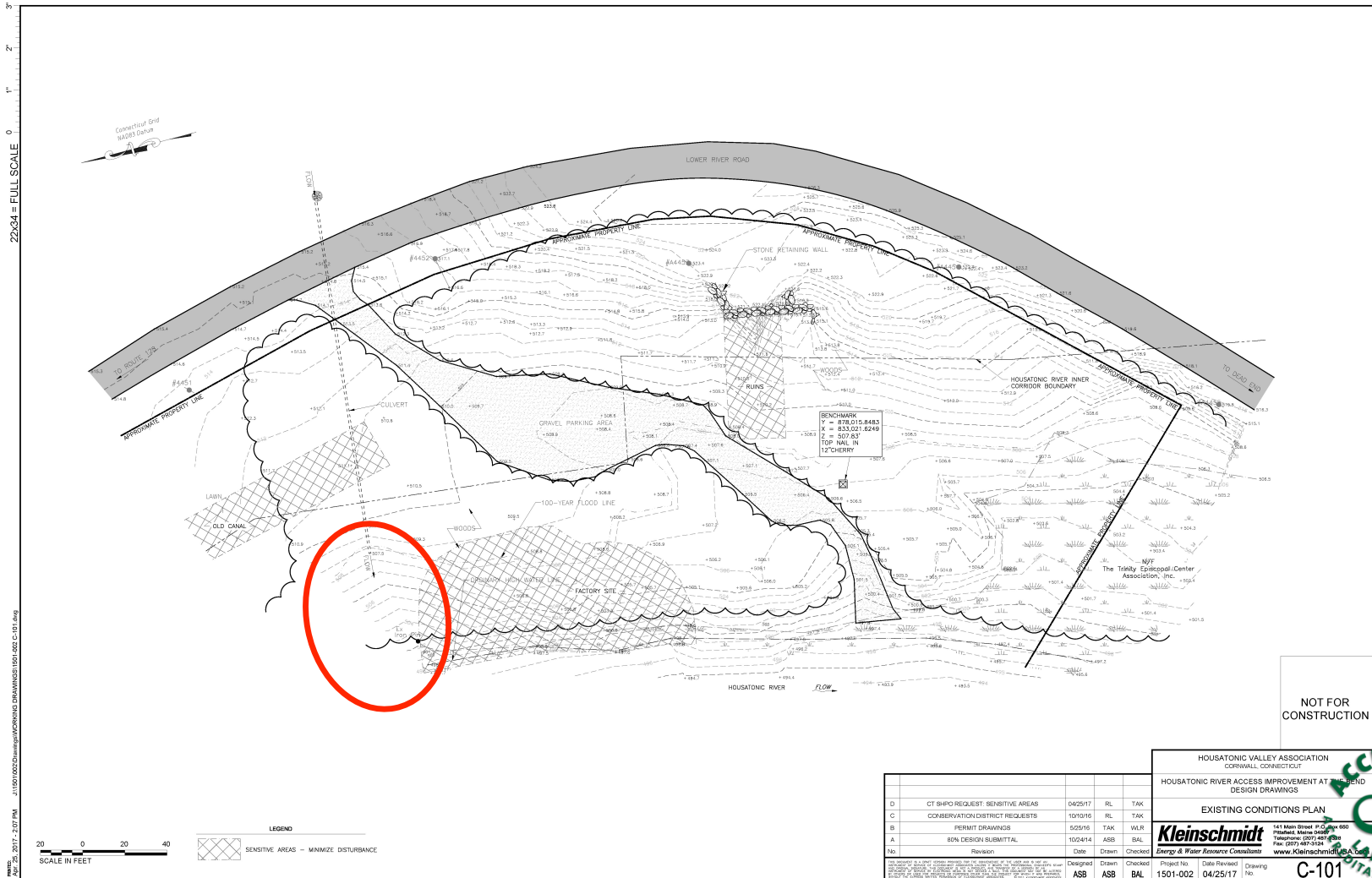
# Existing Conditions: Erosion



# Existing Conditions: Erosion



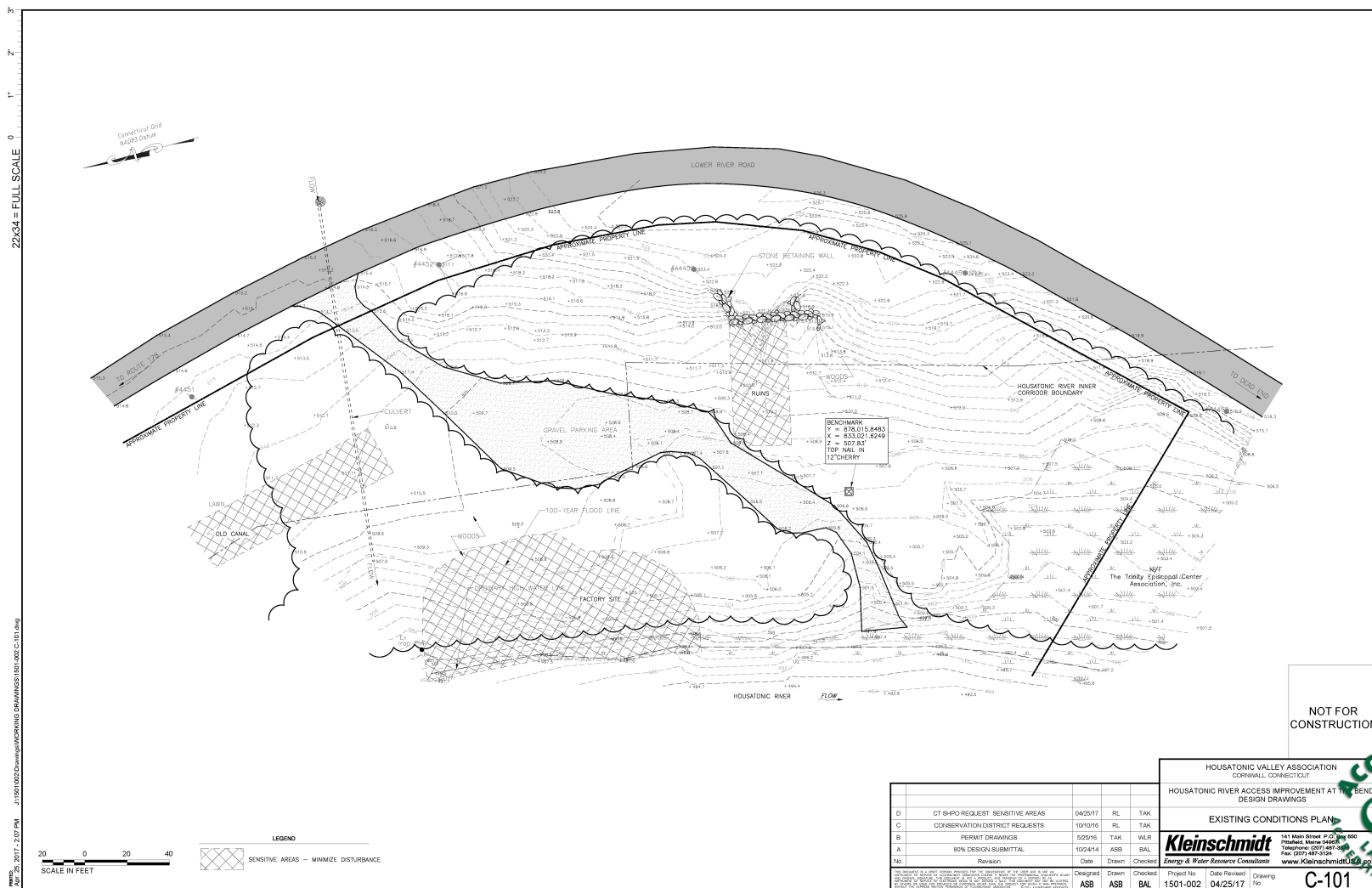
# Existing Conditions: Erosion



# Existing Conditions: Erosion



# Existing Conditions: Failing culvert





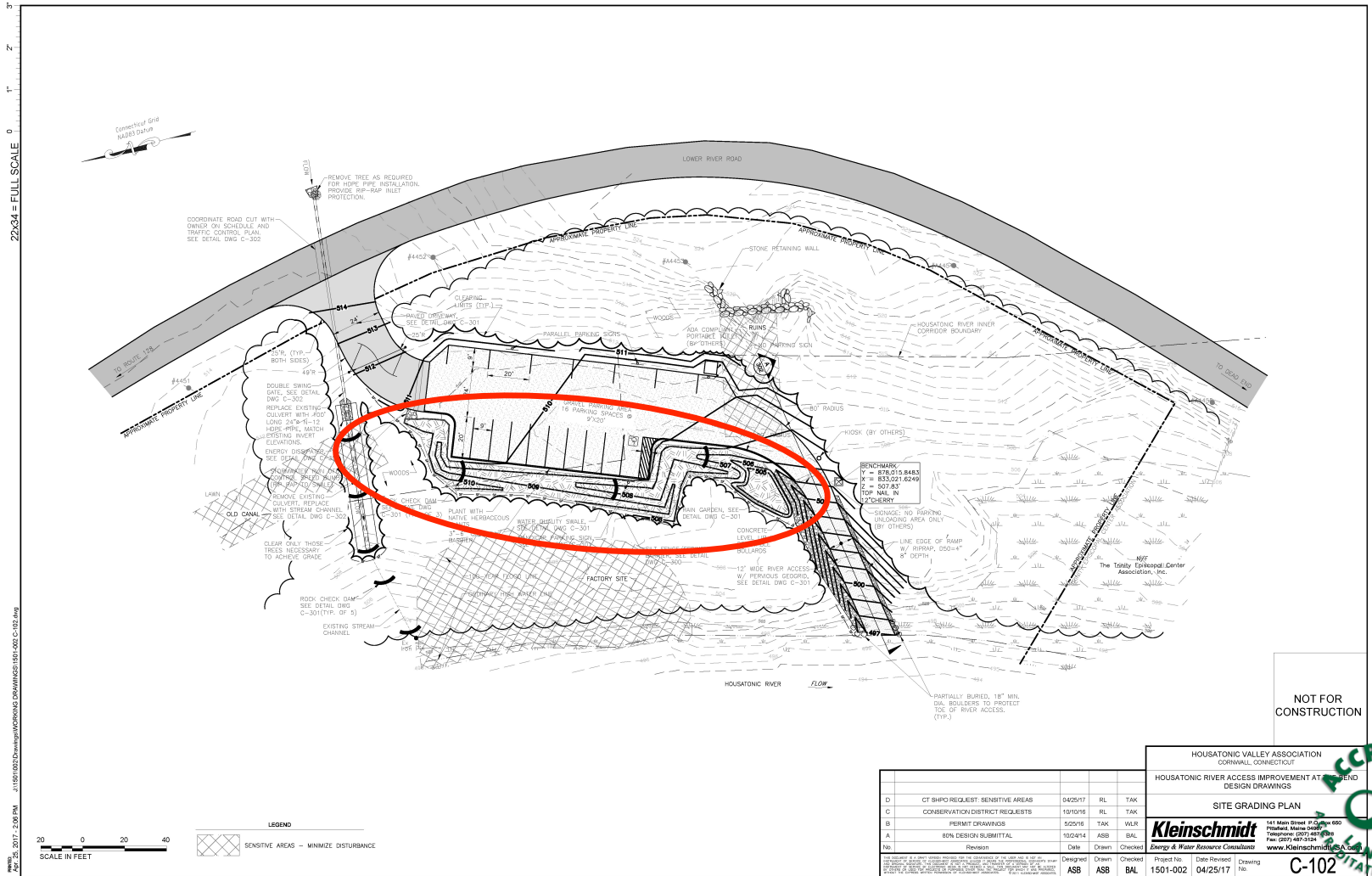
# Existing Conditions: Failing culvert



# Existing Conditions: Dumping



# Proposed Improvements: Stormwater



NOT FOR CONSTRUCTION

HOUSATONIC VALLEY ASSOCIATION  
CORNWALL, CONNECTICUT

HOUSATONIC RIVER ACCESS IMPROVEMENT AT THE  
DESIGN DRAWINGS

**SITE GRADING PLAN**

**Kleinschmidt**  
Energy & Water Resources Consultants

141 Main Street, P.O. Box 460  
Cornwall, Maine 05757  
Telephone (207) 849-6969  
Fax (207) 849-2144  
www.kleinschmidt.com

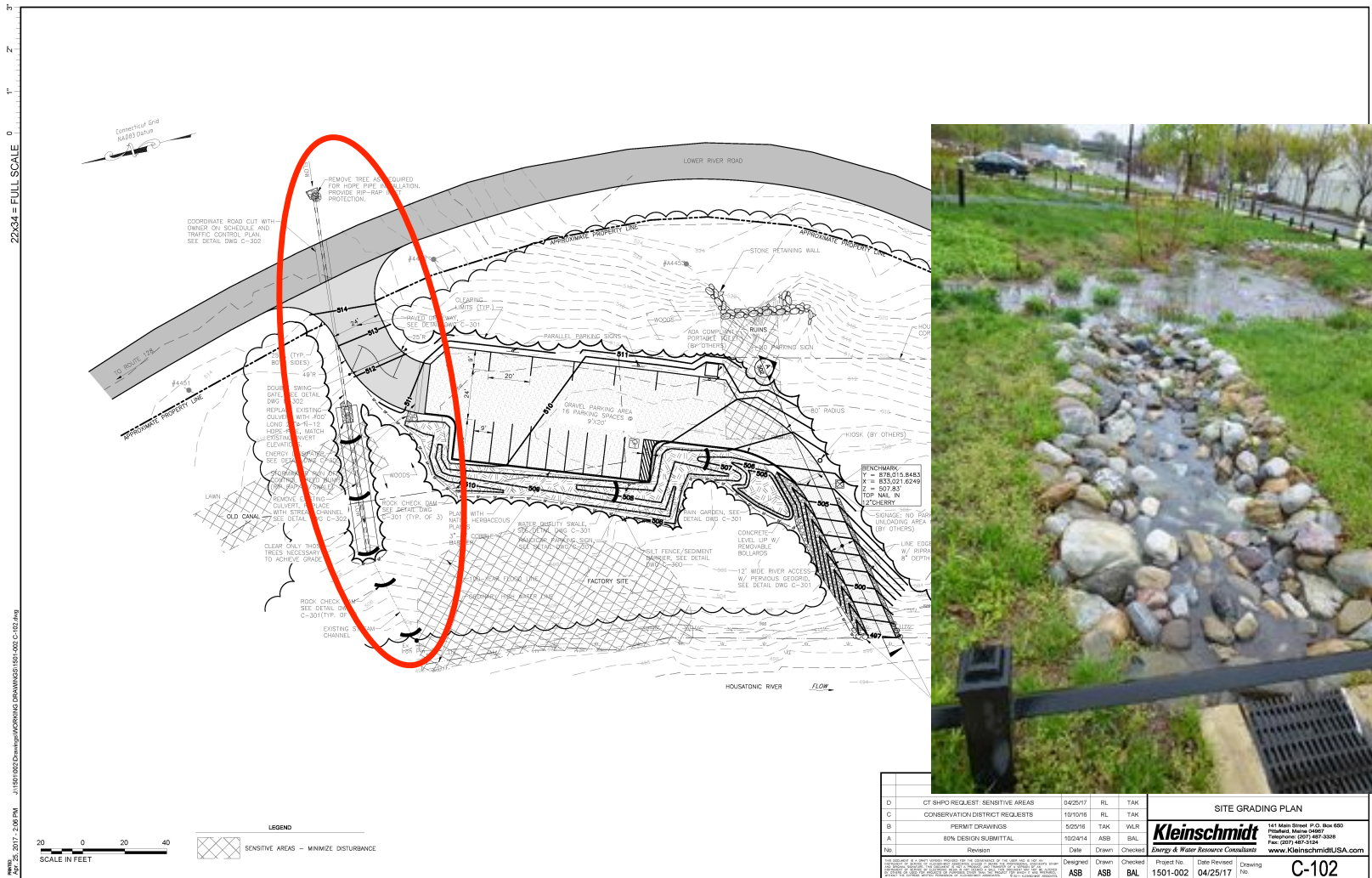
**ACCREDITED**  
LAND TRUST  
CERTIFICATION COMMISSION



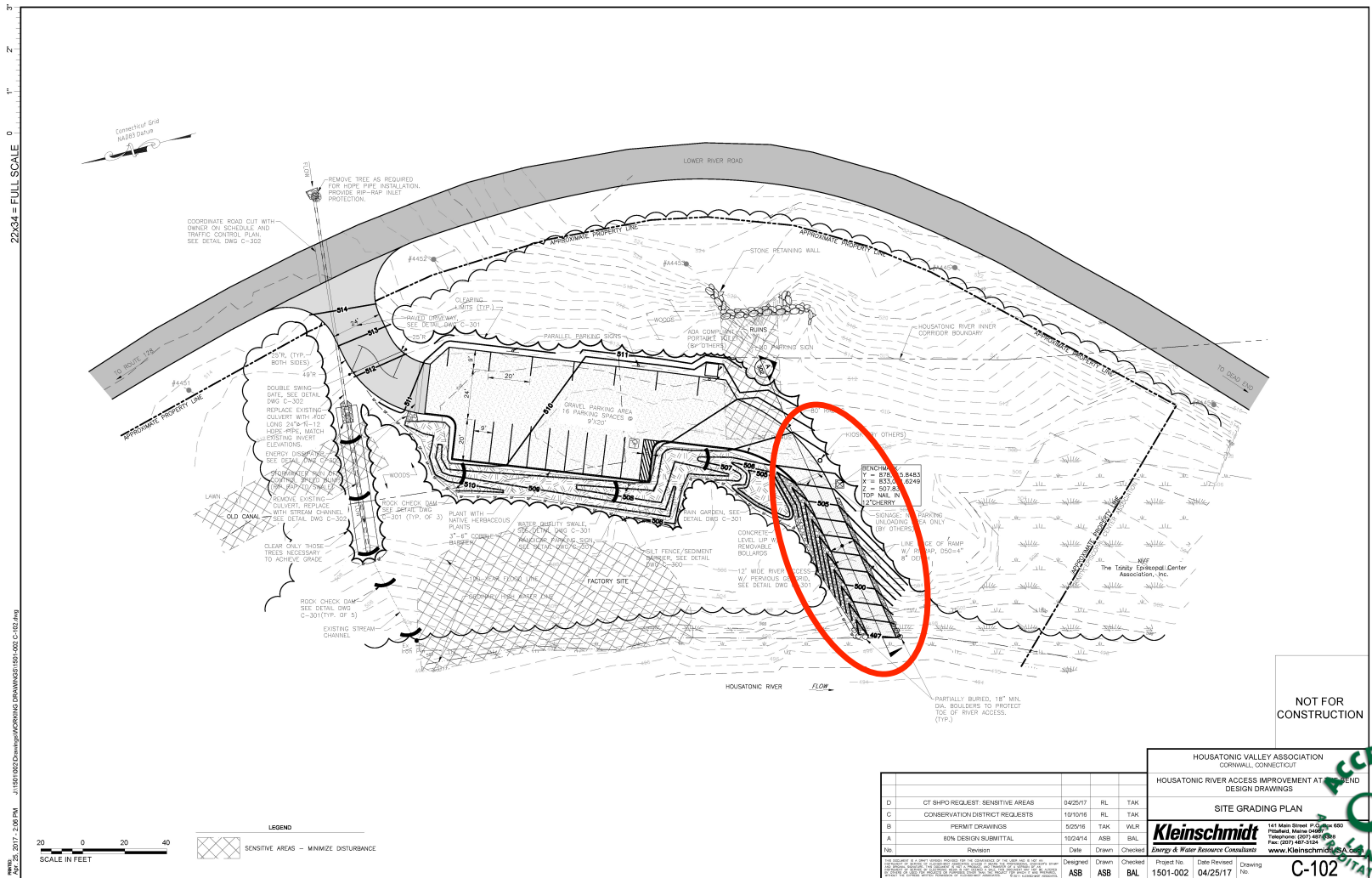
# Proposed Improvements: Stormwater



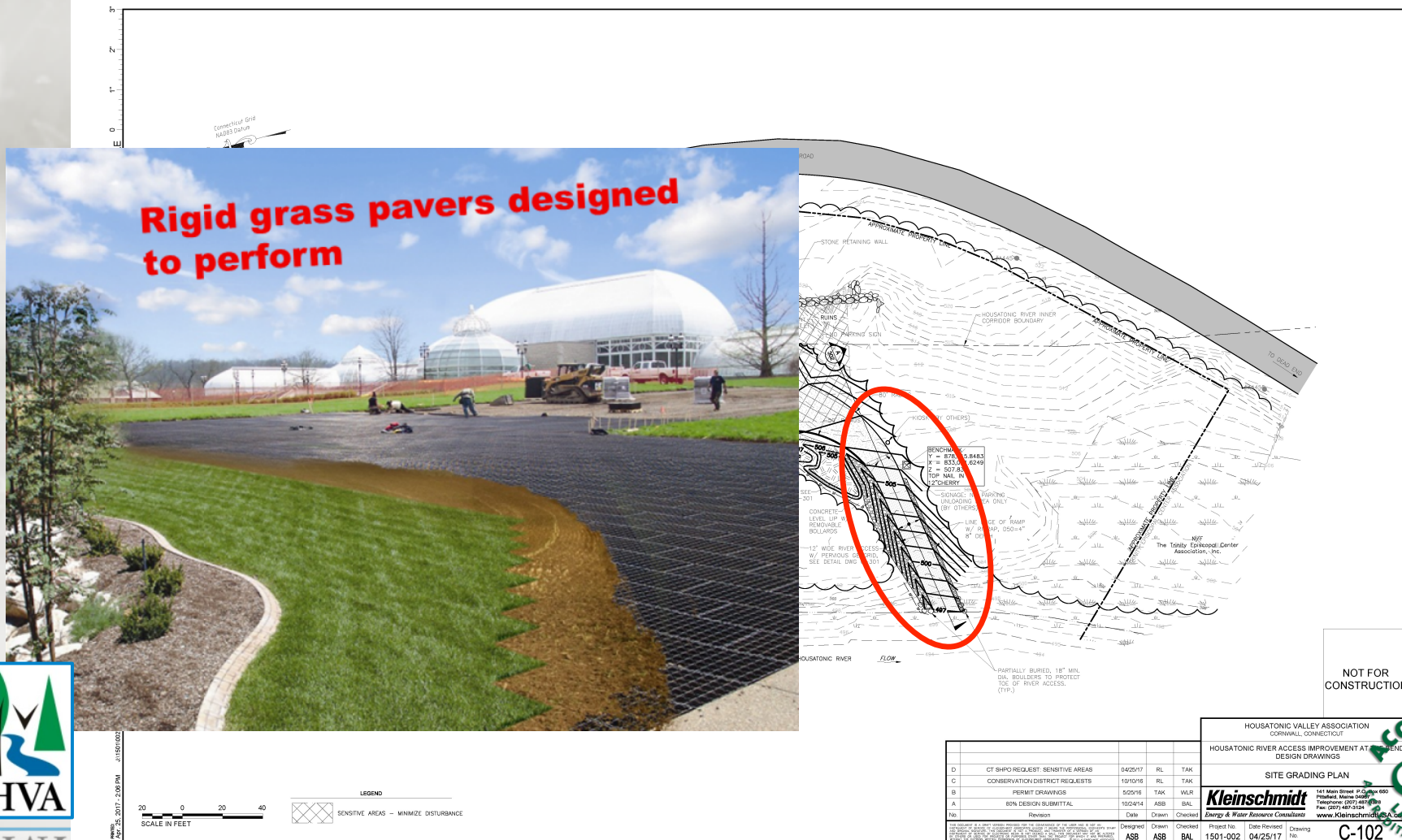
# Proposed Improvements: Culvert replacement



# Proposed Improvements: Improved River Access



# Proposed Improvements: Improved River Access



# Next steps

- Environmental assessment conducted
- Required approvals secured
- Negotiating access agreement for construction and maintenance

