

EPA Public Informational Meeting

**New Bedford Harbor
Superfund Site**

New Bedford, MA

Thursday

April 23, 2015

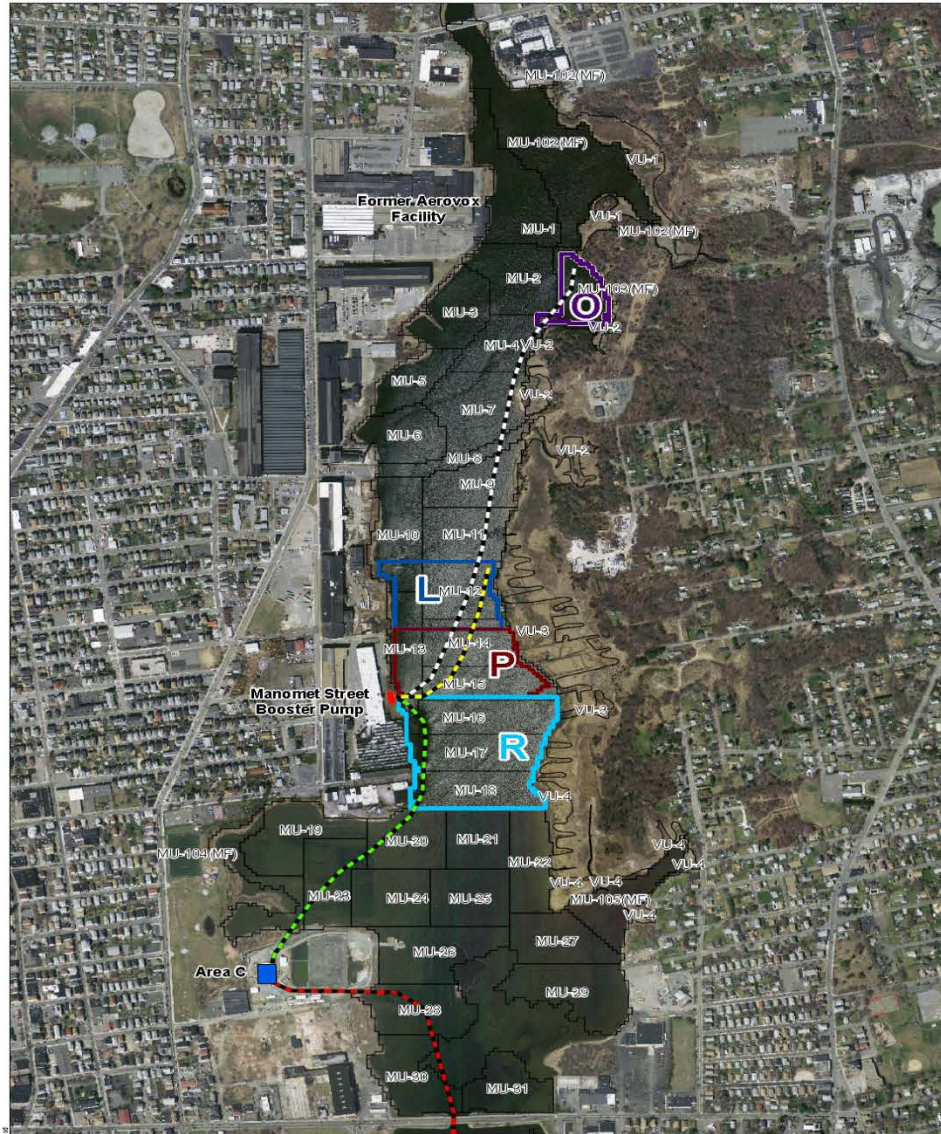
2014 Activity Recap

- Hydraulically dredged approx. 77,000 cubic yards of sub-tidal sediment, and shipped processed filter cake and sand for off-site disposal
- Performed ambient air and water quality monitoring as in years past
- Performed fifth round (every five years) of long term site-wide monitoring of sediment chemistry and benthic populations – preliminary results show continued decrease in overall PCB sediment concentrations – results will be posted on our website: www.epa.gov/nbh
- Completed construction of Phase I Lower Harbor CAD Cell

2015 EPA Cleanup Activities

- Continue sampling of the intertidal/shoreline areas to refine our excavation plans
- Continue dredging in the Upper Harbor north of Coggeshall Street Bridge
- Perform archeological surveys for areas to be dredged in 2015 – 2016
- Complete construction of the Lower Harbor CAD Cell
- Continue outreach and education on the seafood consumption advisory

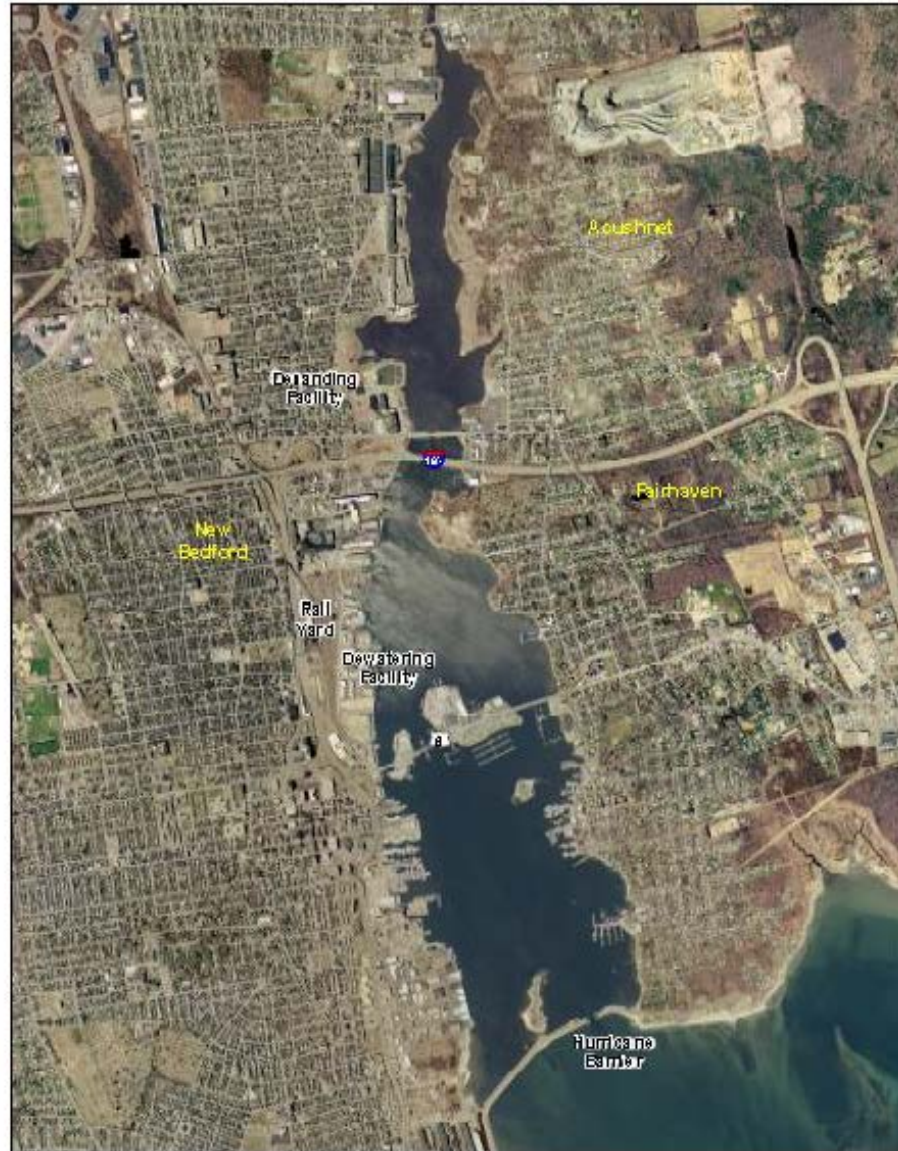
Upper Harbor



Legend		2014 Dredge Area O	Management Units
Pipeline from Dredge Area O to Manomet Street Booster Pump	2014 Dredge Area L		
Pipeline from Dredge Areas L, P, & R to Manomet Street Booster Pump	2014 Dredge Area P	 1:7,200	
Pipeline to Desanding	2014 Dredge Area R		Booster Pump Location and Dredge Pipeline Routes New Bedford Harbor Superfund Site <small>PROJECT NUMBER DATE 2/11/2014</small> Figure 1
Pipeline From Area C to Area D	Manomet Street Booster Pump		

Operable Unit # 1

Upper and Lower Harbor



New Bedford Harbor Superfund Site

