

LAND USE LEGEND:

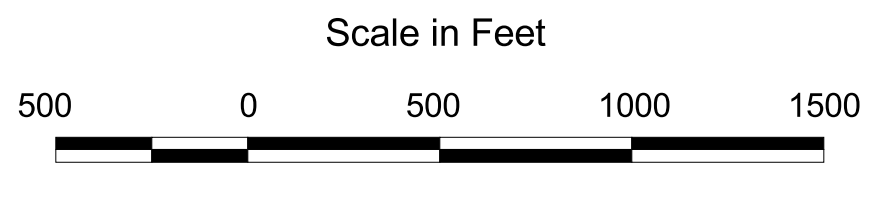
- Commercial
- Cropland
- Forest
- Industrial
- Mining
- Open Land
- Pasture
- Recreation
- Residential - Lots > 1/2 ac
- Residential-multi-family
- Transportation
- Urban Open
- Waste Disposal
- Water
- Wetland
- Woody Perennial

LEGEND:

- ◆ GE
- ▼ EPA - Corps of Engineers
- Roads
- Railroads
- River

PCB Concentration (ppm)	result value	lower depth value
< 1	0.5	
1 - 2	1.0	
2 - 4	2.0	
4 - 7	4.0	
7 - 25	25.0	
25 - 100	100.0	
> 100	100.0	
no sample	0.5	
non-detect	0.5	

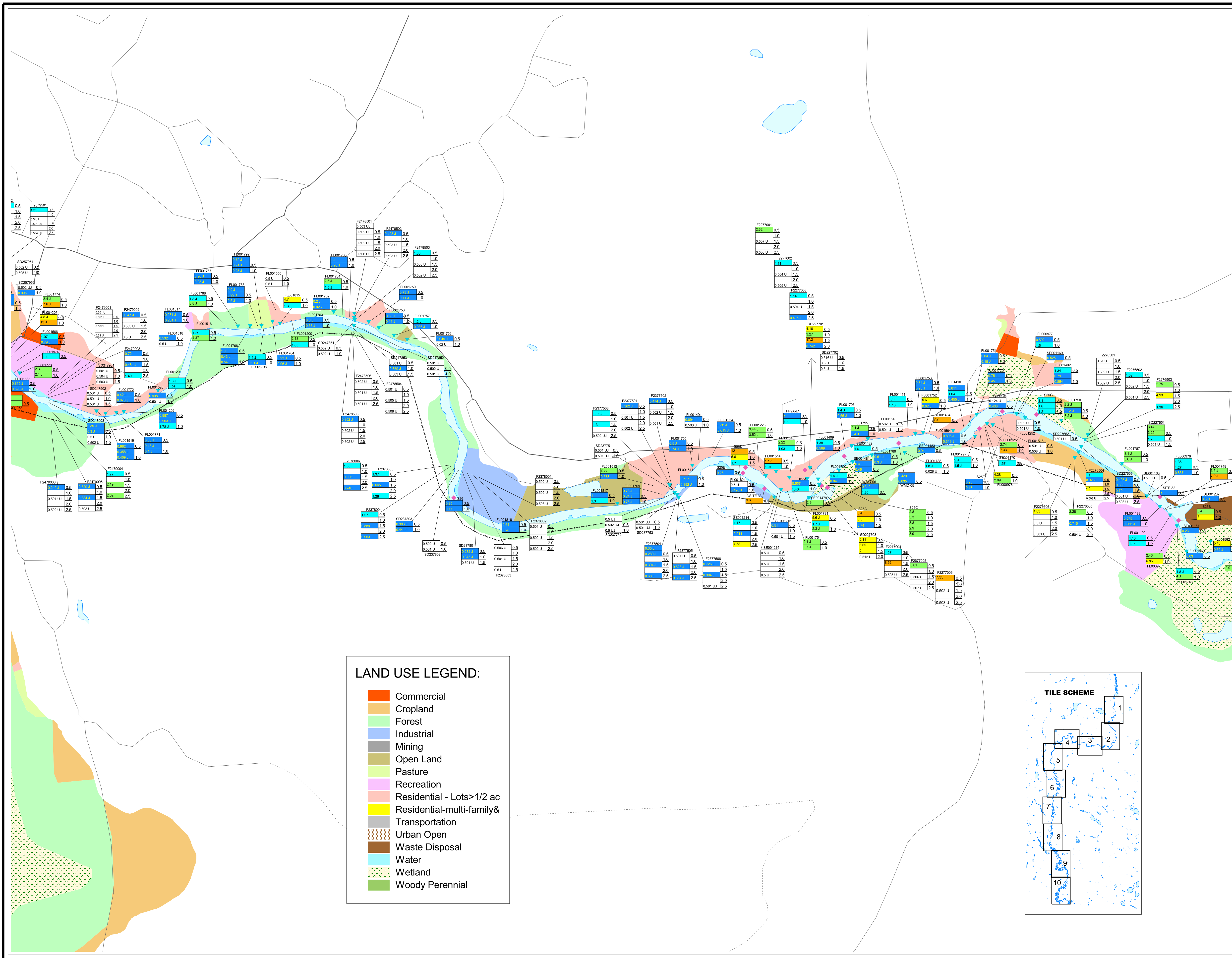
NOTE: Result flag indicates --
 U = not detected at reported value
 J = estimated detected value
 UJ = estimated non-detected value



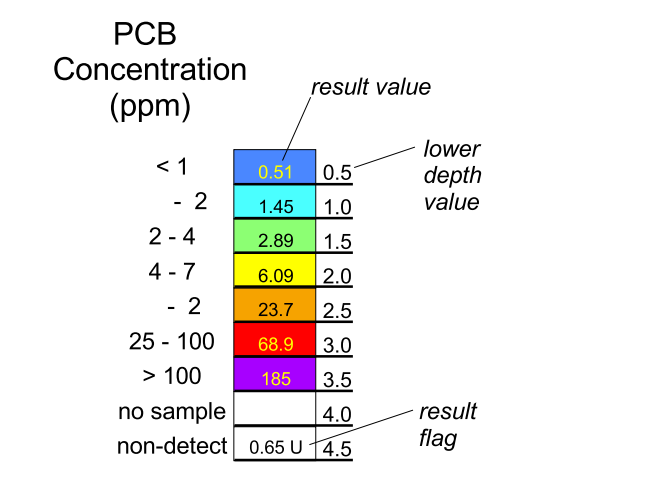
Housatonic River Project
 Pittsfield, Massachusetts

**TOTAL PCB RESULTS
 REACH 7, AND 8
 TILE 2/10**

NOTE: Datamart as of November 13, 2002

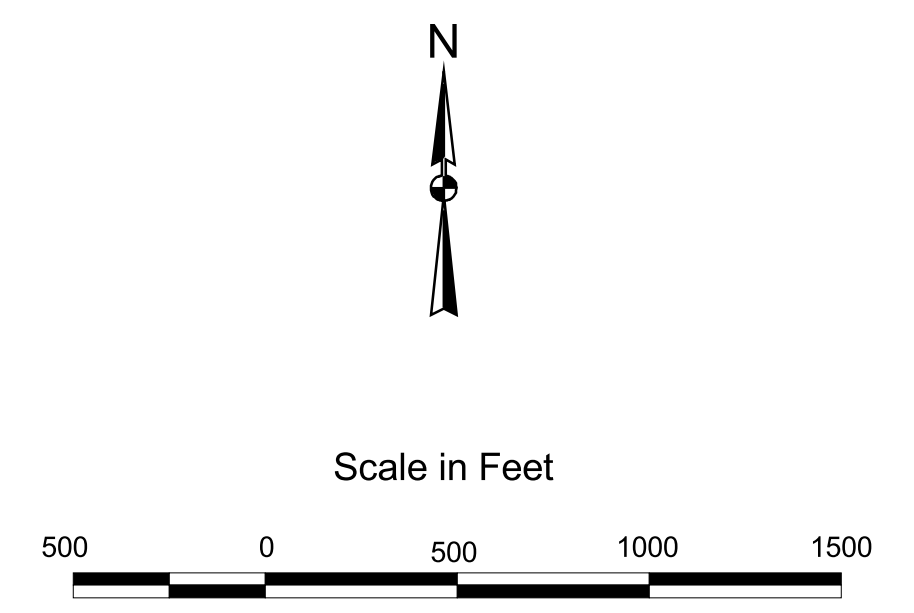
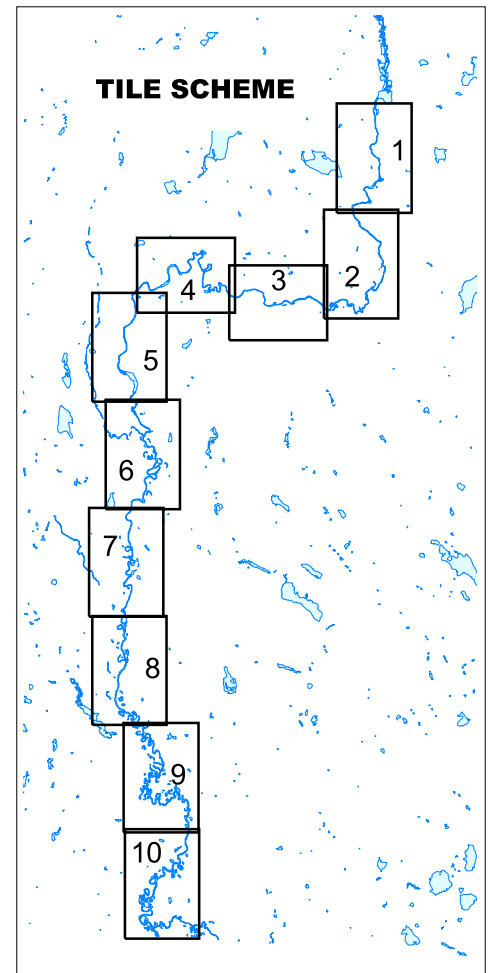


- LEGEND:**
- ◆ GE
 - ▼ EPA - Corps of Engineers
 - ▬ Roads
 - ▬ Railroads
 - ▭ River



NOTE: Result flag indicates --
 U = not detected at reported value
 J = estimated at or below reported value
 UJ = estimated at or below reported value

- LAND USE LEGEND:**
- Commercial
 - Cropland
 - Forest
 - Industrial
 - Mining
 - Open Land
 - Pasture
 - Recreation
 - Residential - Lots > 1/2 ac
 - Residential-multi-family & Transportation
 - Urban Open
 - Waste Disposal
 - Water
 - Wetland
 - Woody Perennial



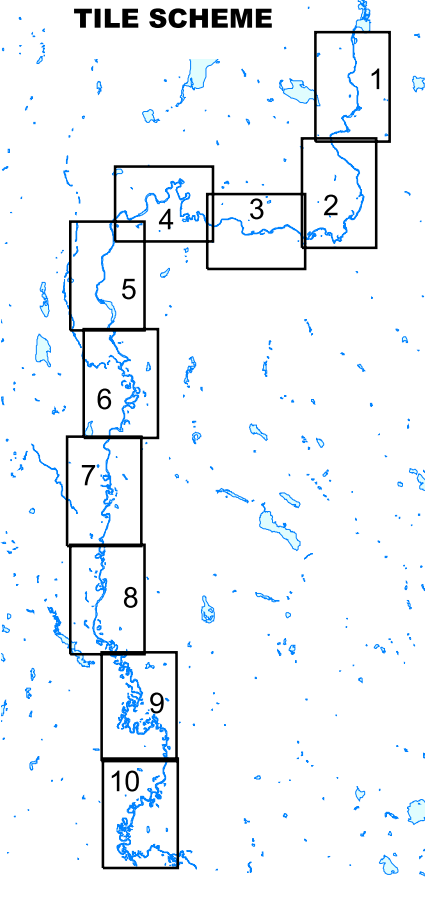
Housatonic River Project
 Pittsfield, Massachusetts

**TOTAL PCB RESULTS
 REACH 7, AND 8
 TILE 3/10**

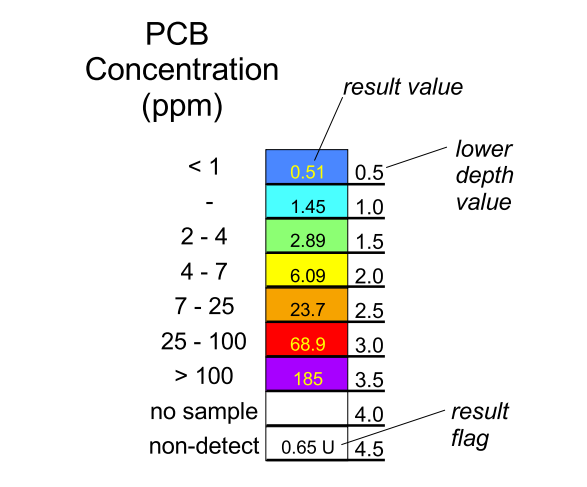
NOTE: Datamart as of November 13, 2002

LAND USE LEGEND:

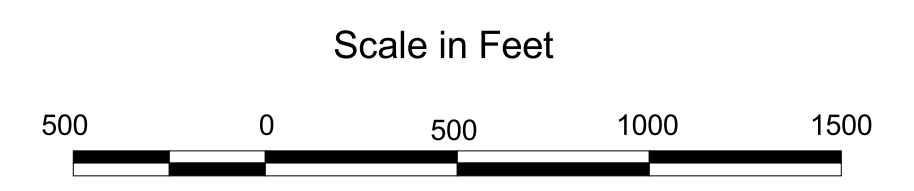
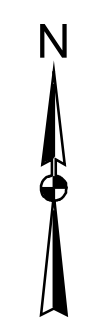
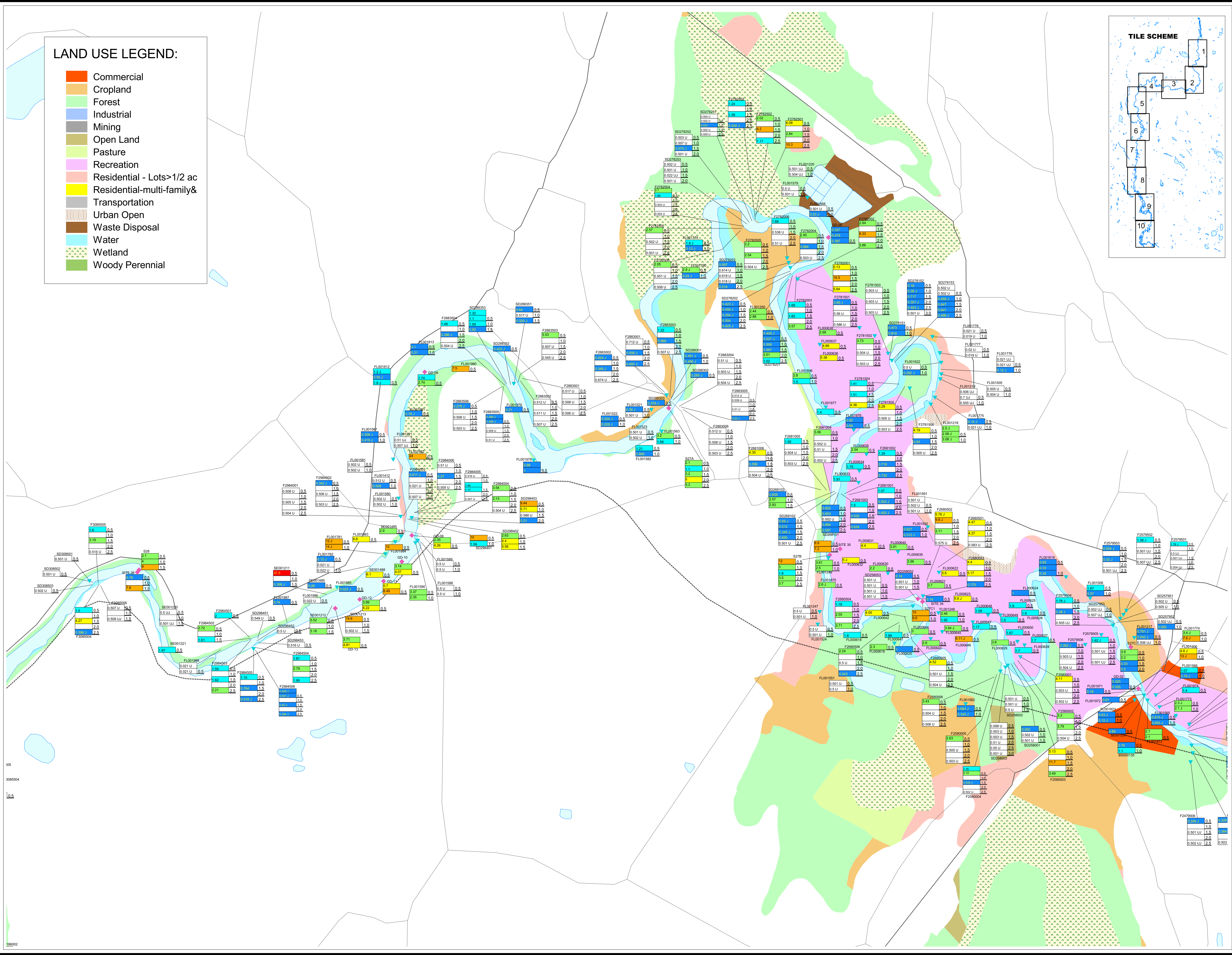
- Commercial
- Cropland
- Forest
- Industrial
- Mining
- Open Land
- Pasture
- Recreation
- Residential - Lots > 1/2 ac
- Residential-multi-family&
- Transportation
- Urban Open
- Waste Disposal
- Water
- Wetland
- Woody Perennial



- LEGEND:**
- ◆ GE
 - ▼ EPA - Corps of Engineers
 - Roads
 - Railroads
 - River



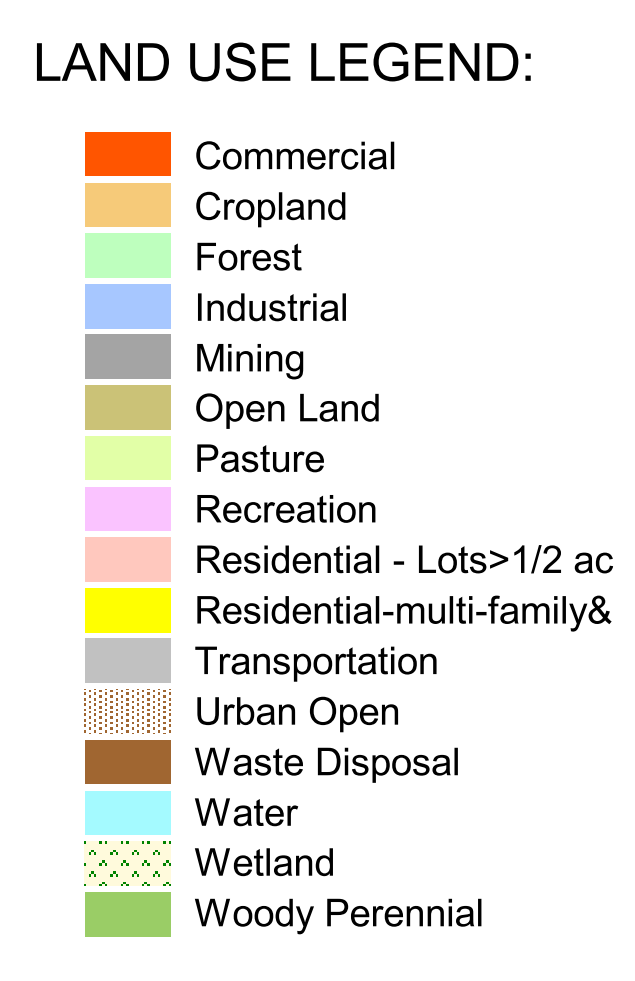
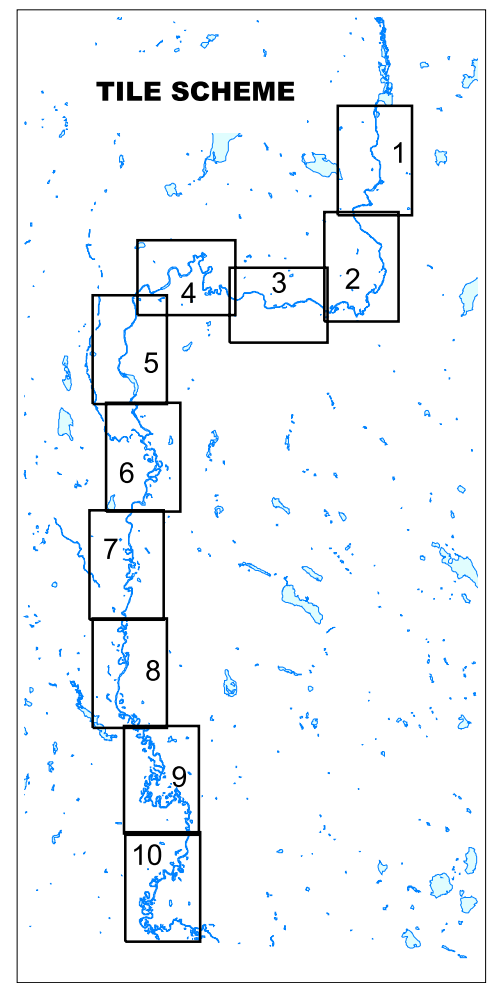
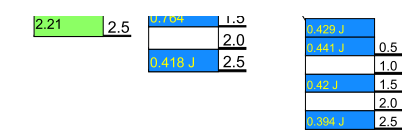
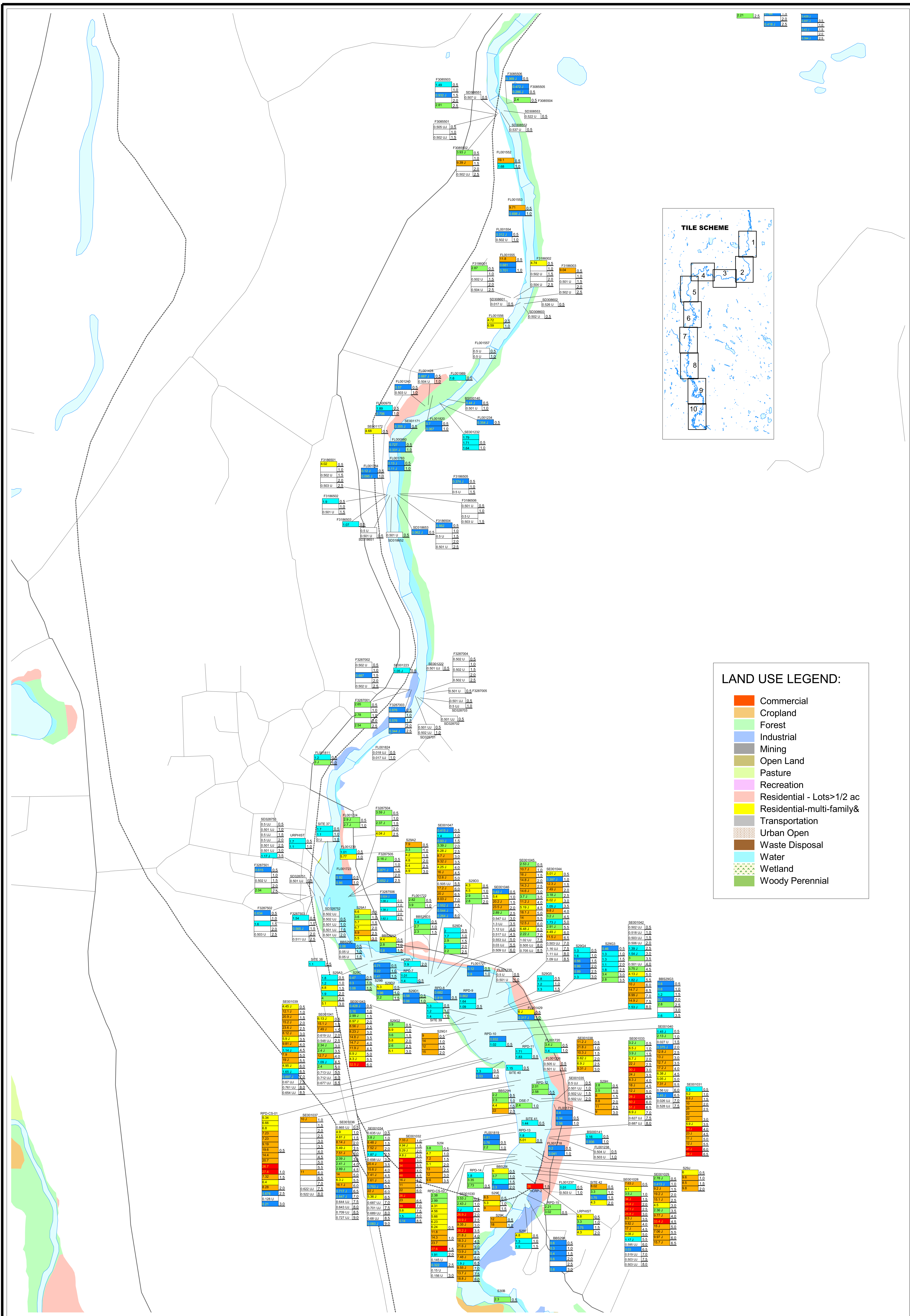
NOTE: Result flag indicates --
 U = not detected at reported value
 J = estimated at or below reported value
 UJ = estimated at or below reported value



Housatonic River Project
 Pittsfield, Massachusetts

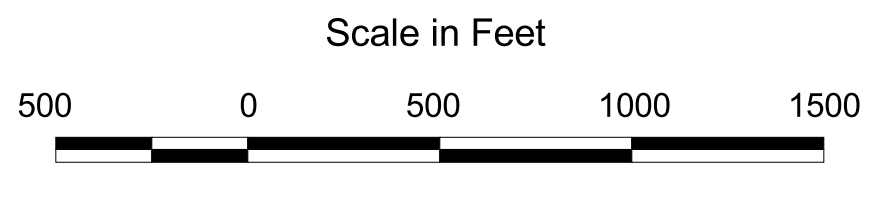
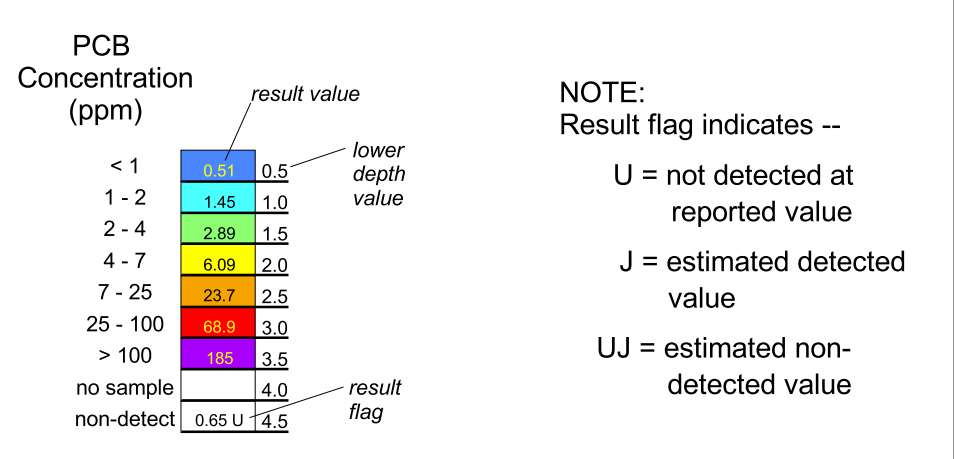
**TOTAL PCB RESULTS
 REACH 7, AND 8
 TILE 4/10**

NOTE: Datamart as of November 13, 2002



LEGEND:

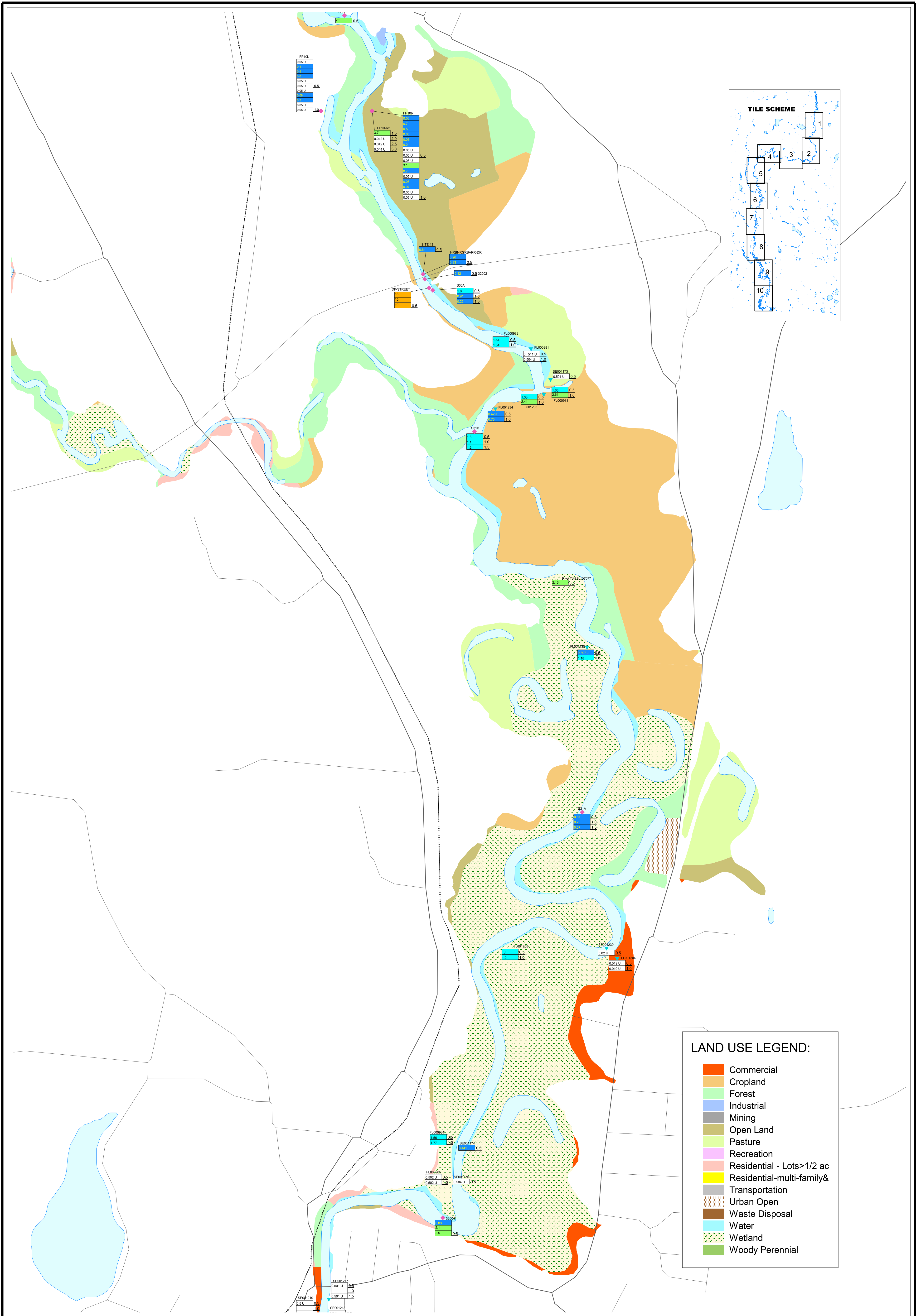
- GE
- EPA - Corps of Engineers
- Roads
- Railroads
- River



Housatonic River Project
 Pittsfield, Massachusetts

**TOTAL PCB RESULTS
 REACH 7, AND 8
 TILE 5/10**

NOTE: Datamart as of November 13, 2002

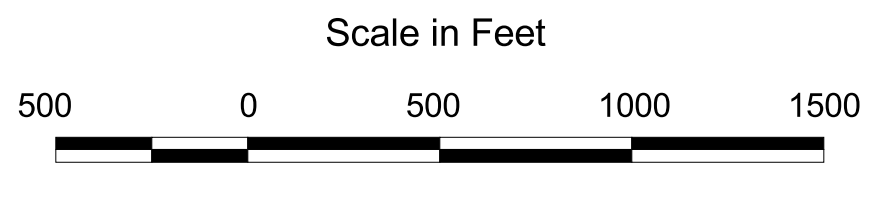


LEGEND:

- ◆ GE
- EPA - Corps of Engineers
- ⚡ Roads
- ⚡ Railroads
- 🌊 River

PCB Concentration (ppm)	result value	lower depth value
< 1	0.5	0.5
1 - 2	1.0	1.0
2 - 4	1.5	1.5
4 - 7	2.0	2.0
7 - 25	2.5	2.5
25 - 100	3.0	3.0
> 100	3.5	3.5
no sample	4.0	4.0
non-detect	4.5	4.5

NOTE:
 Result flag indicates --
 U = not detected at reported value
 J = estimated detected value
 UJ = estimated non-detected value



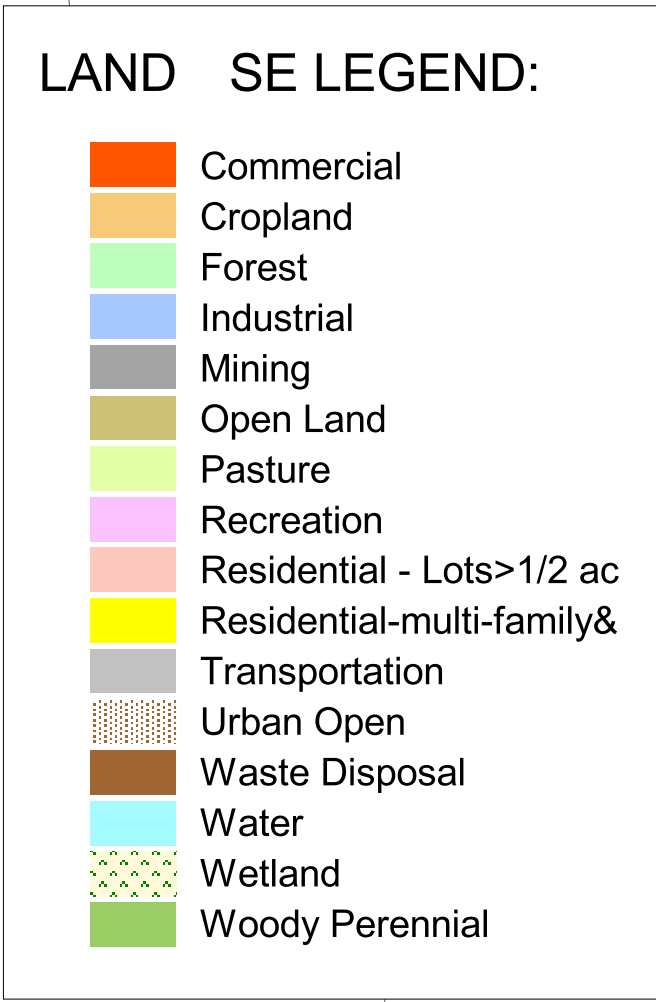
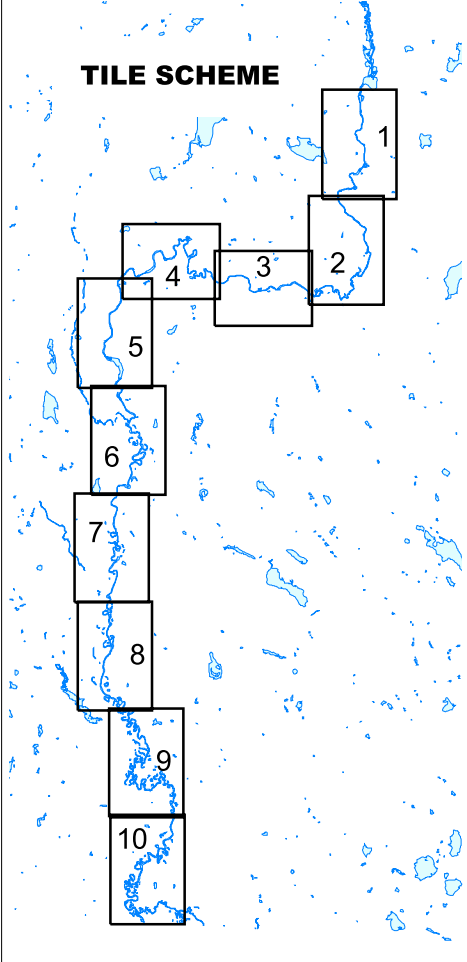
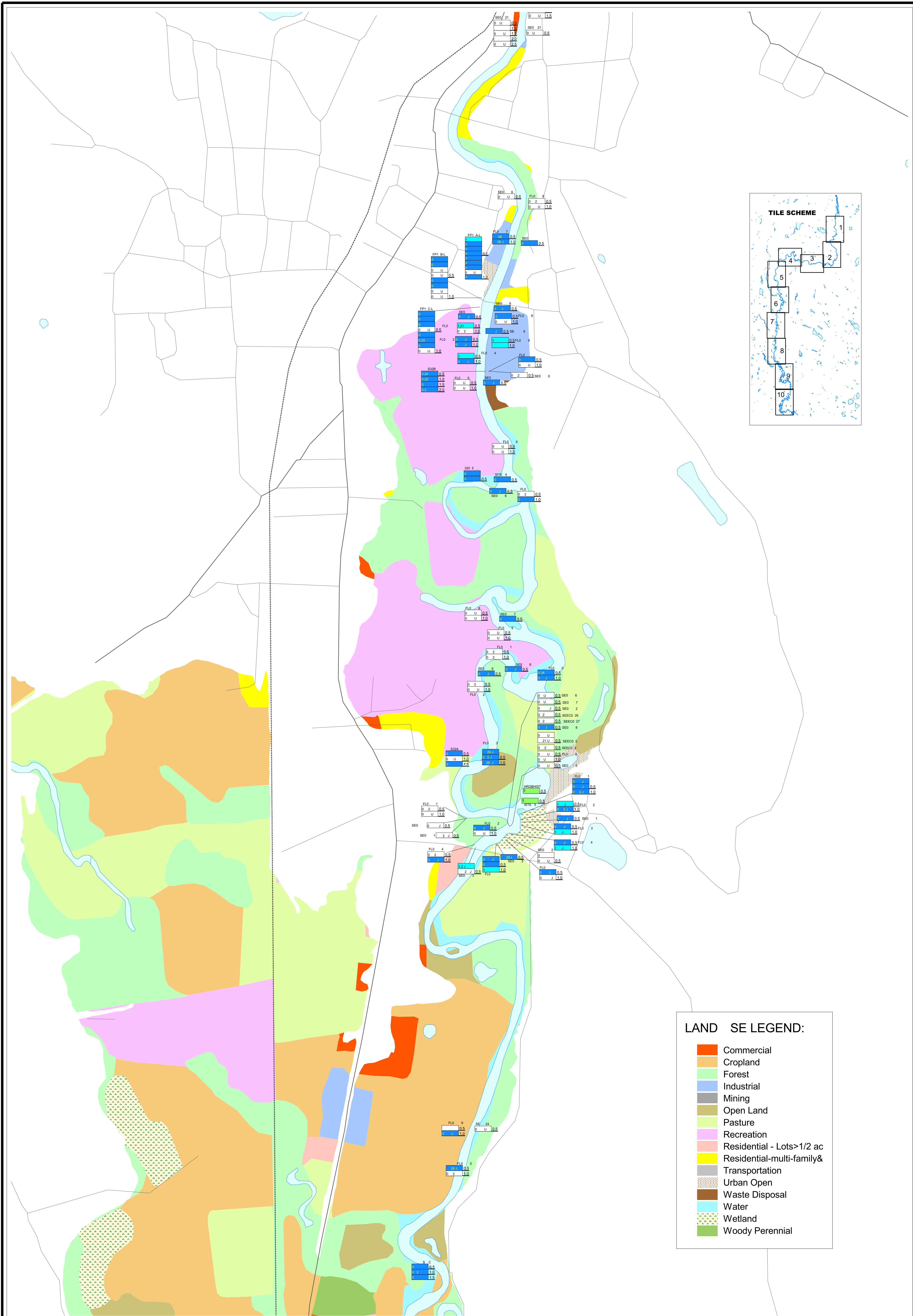
LAND USE LEGEND:

- Commercial
- Cropland
- Forest
- Industrial
- Mining
- Open Land
- Pasture
- Recreation
- Residential - Lots > 1/2 ac
- Residential-multi-family &
- Transportation
- Urban Open
- Waste Disposal
- Water
- Wetland
- Woody Perennial

Housatonic River Project
 Pittsfield, Massachusetts

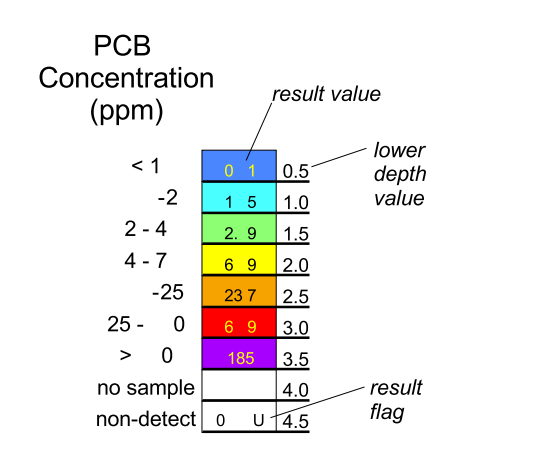
**TOTAL PCB RESULTS
 REACH 7, 8 AND 9
 TILE 6/10**

NOTE: Datamart as of November 13, 2002

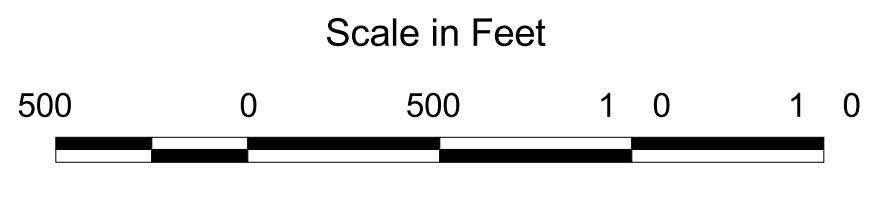


LEGEND:

- GE
- EPA - Corps of Engineers
- Roads
- Railroads
- River

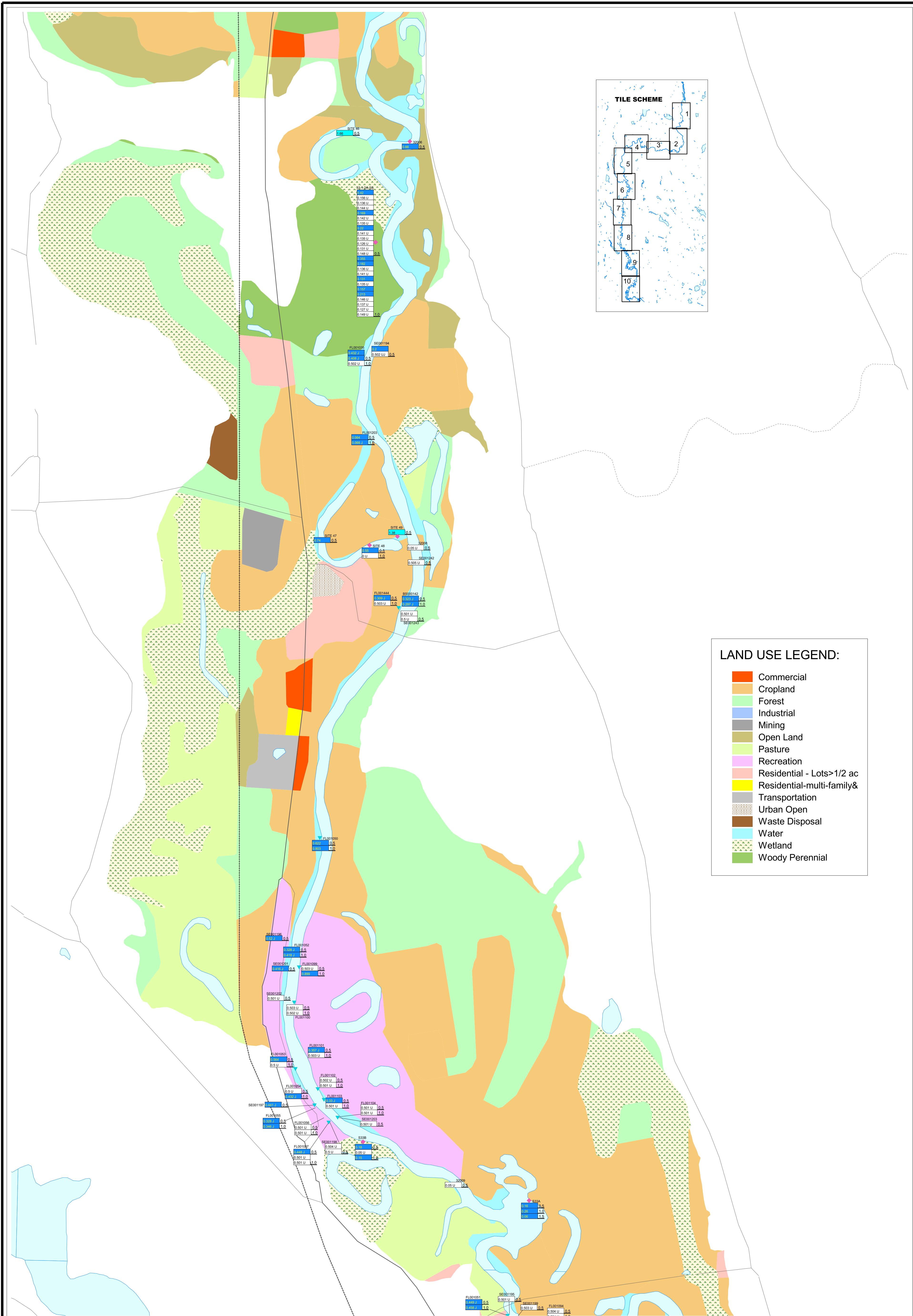


NOTE:
 Result flag indicates --
 U = not detected at reported value
 J = estimated detected value
 UJ = estimated non-detected value



Housatonic River Project
 Pittsfield, Massachusetts
**TOTAL PCB RESULTS
 REACH 7, 8 AND 9
 TILE 7/10**

NOTE: Datamart as of November , 20 2



LAND USE LEGEND:

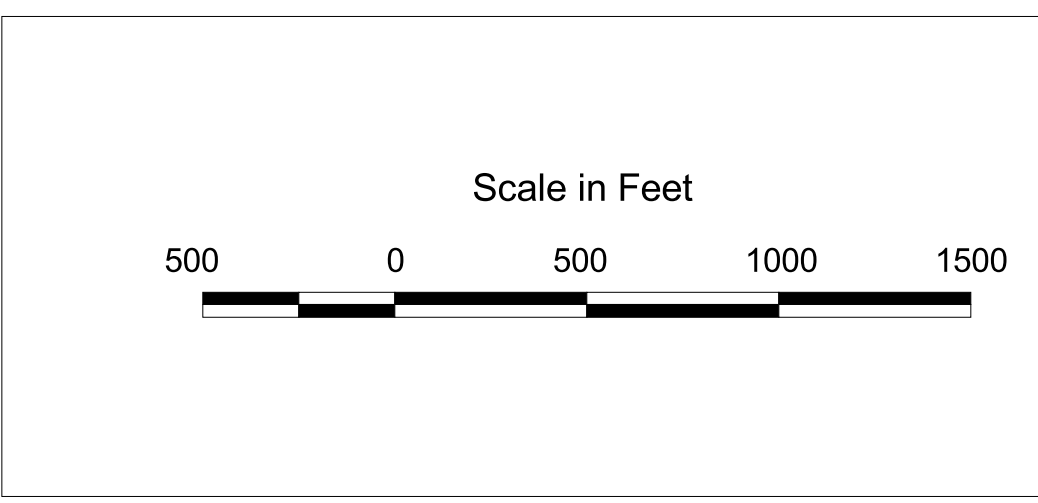
- Commercial
- Cropland
- Forest
- Industrial
- Mining
- Open Land
- Pasture
- Recreation
- Residential - Lots > 1/2 ac
- Residential-multi-family&
- Transportation
- Urban Open
- Waste Disposal
- Water
- Wetland
- Woody Perennial

LEGEND:

- ◆ GE
- ▼ EPA - Corps of Engineers
- Roads
- Railroads
- River

PCB Concentration (ppm)	result value	lower depth value
< 1	0.5	0.5
1 - 2	1.0	1.0
2 - 4	1.45	1.5
4 - 7	2.89	2.0
7 - 25	6.09	2.5
25 - 100	23.7	3.0
> 100	68.4	3.5
no sample	4.0	4.0
non-detect	0.65 U	1.5

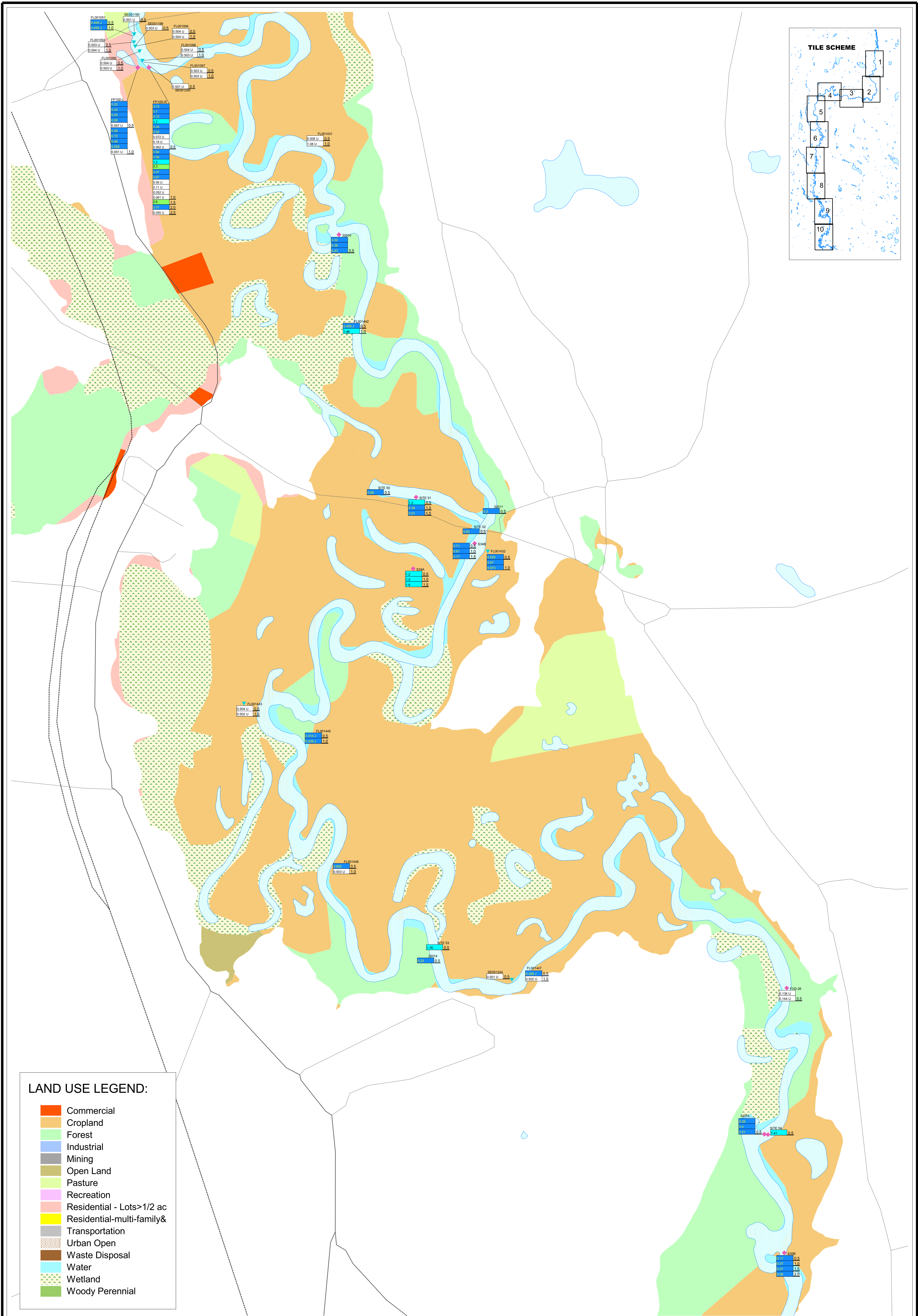
NOTE:
 Result flag indicates --
 U = not detected at reported value
 J = estimated detected value
 UJ = estimated non-detected value



Housatonic River Project
 Pittsfield, Massachusetts

**TOTAL PCB RESULTS
 REACH 7, 8 AND 9
 TILE 8/10**

NOTE: Datamart as of November 13, 2002



LAND USE LEGEND:

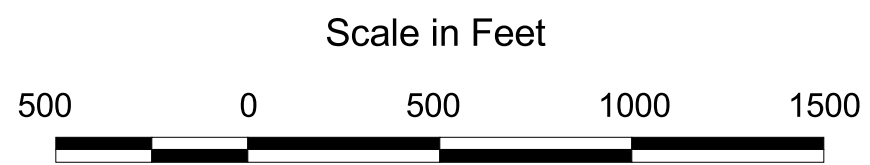
- Commercial
- Cropland
- Forest
- Industrial
- Mining
- Open Land
- Pasture
- Recreation
- Residential - Lots > 1/2 ac
- Residential-multi-family&
- Transportation
- Urban Open
- Waste Disposal
- Water
- Wetland
- Woody Perennial

LEGEND:

- ◆ GE
- ▼ EPA - Corps of Engineers
- Roads
- Railroads
- River

PCB Concentration (ppm)	result value	lower depth value
< 1	0.5	0.5
1 - 2	1.45	1.0
2 - 4	2.89	1.5
4 - 7	5.78	2.0
7 - 25	23.7	2.5
25 - 100	47.4	3.0
> 100	94.8	3.5
no sample	4.0	4.0
non-detect	0.65 U	1.5

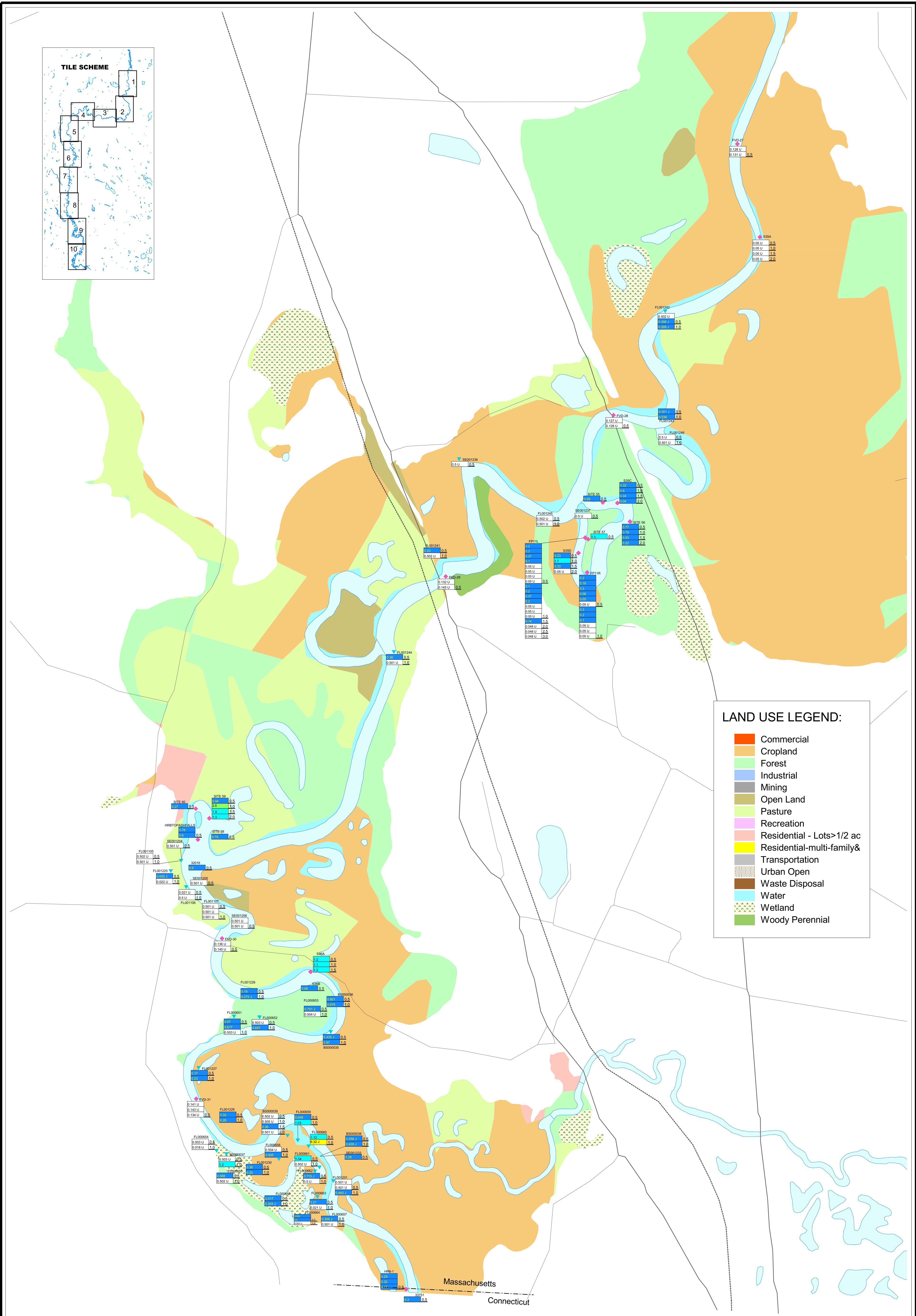
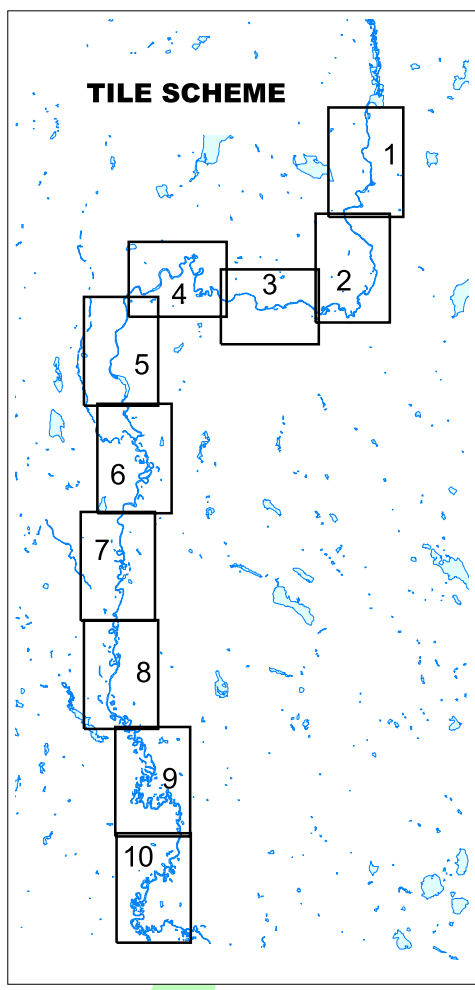
NOTE:
 Result flag indicates --
 U = not detected at reported value
 J = estimated detected value
 UJ = estimated non-detected value



Housatonic River Project
 Pittsfield, Massachusetts

**TOTAL PCB RESULTS
 REACH 7, 8 AND 9
 TILE 9/10**

NOTE: Datamart as of November 13, 2002



LAND USE LEGEND:

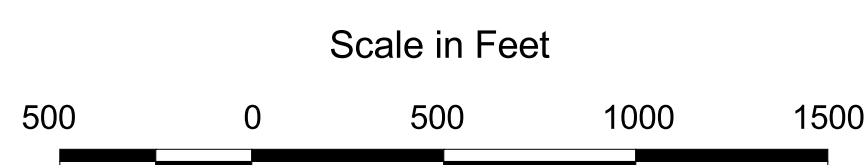
- Commercial
- Cropland
- Forest
- Industrial
- Mining
- Open Land
- Pasture
- Recreation
- Residential - Lots > 1/2 ac
- Residential-multi-family&
- Transportation
- Urban Open
- Waste Disposal
- Water
- Wetland
- Woody Perennial

LEGEND:

- ◆ GE
- ▼ EPA - Corps of Engineers
- Roads
- Railroads
- River

PCB Concentration (ppm)	result value	lower depth value
< 1	0.5	
1 - 2	1.0	
2 - 4	1.5	
4 - 7	2.0	
7 - 25	2.5	
25 - 100	3.0	
> 100	3.5	
no sample	4.0	
non-detect	4.5	

NOTE:
Result flag indicates --
U = not detected at reported value
J = estimated detected value
UJ = estimated non-detected value



Housatonic River Project
Pittsfield, Massachusetts

**TOTAL PCB RESULTS
REACH 7, 8 AND 9
TILE 10/10**

NOTE: Datamart as of November 13, 2002