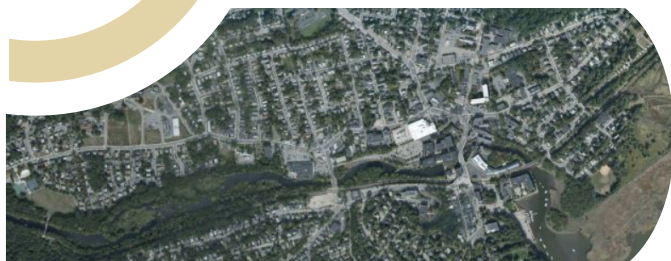


SUPERFUND

Lower Neponset River Site

Boston/Milton, MA



THE SUPERFUND PROGRAM protects human health and the environment by investigating and cleaning up often-abandoned hazardous waste sites and engaging communities throughout the process. Many of these sites are complex and need long-term cleanup actions. Those responsible for contamination are held liable for cleanup costs. EPA strives to return previously contaminated land and groundwater to productive use.

DESCRIPTION

The Site is currently identified by the U.S. Environmental Protection Agency (EPA) as the 3.7-mile stretch of the Neponset River from the point where it merges with Mother Brook (a tributary to the Neponset River located upstream of Dana Avenue in Hyde Park) and extends downstream to the Walter Baker Chocolate Dam (located upstream of Adams Street in Dorchester/Milton). Based on the sampling conducted in 2023, the first mile of the river contains contaminated sediment with elevated levels of polychlorinated biphenyls (PCBs), dioxins and furans, pesticides, metals, volatile organic compounds, and semi-volatile organic compounds.

The Site borders residential, commercial, industrial, and public land, including the Neponset River Greenway. Historically, many mills and industries operated along the Lower Neponset River in the neighborhoods of Hyde Park, Mattapan, Dorchester and Milton. These mills and other industrial facilities in the area may have contributed to the river contamination.

UPCOMING ACTIVITY

In the fall of 2024, EPA will continue to conduct investigations and sampling activities along the Phase II area of the Site (from the Tileston and Hollingsworth Dam to the Walter Baker Chocolate Dam). EPA will collect mussels, fish, sediment, and surface water samples. Residents may see workers along the river or on a small boat wearing protective clothing. This clothing is required because of the workers' direct contact with sediments possibly contaminated with PCBs and other contaminants. To learn more about the Superfund (cleanup) process, please visit: www.epa.gov/superfund/superfund-cleanup-process

COMMUNITY PARTICIPATION

Community Involvement Plan – This plan is available at <https://www.epa.gov/neponsetriver>. Community Involvement Plans (CIPs) are designed to ensure meaningful community involvement

continued >>

KEY CONTACTS:

ZANETTA PURNELL

EPA Community
Involvement Coordinator
617-918-1306
purnell.zanetta@epa.gov

NATALIE BURGO

EPA Remedial Project Manager
617-918-1331
burgo.natalie@epa.gov

ALEXANDER "TRISTAN" PLUTA

EPA Remedial Project Manager
617-918-1258
pluta.alexander@epa.gov

GENERAL INFO:

TOLL-FREE CUSTOMER SERVICE

1-888-EPA-7341

LEARN MORE AT:

www.epa.gov/neponsetriver



throughout the Superfund cleanup process by gathering community input. EPA considers CIPs “living documents,” meaning new updates and information will be added as EPA continues to assess and cleanup the Site.

Community Meeting – EPA will host a public meeting in late fall of 2024. At the meeting, EPA will share information about work completed to date and activities planned for the coming year. EPA will provide the date and location of the meeting soon.

Community Advisory Group – Community members impacted by the Lower Neponset River Superfund Site have formed a Community Advisory Group (CAG). The members of the advisory group represent diverse community interests. CAGs provide a public forum for community members to discuss their needs and concerns about the Site. If you are interested in learning more about the CAG or possibly joining, please reach out directly to the Lower Neponset River Superfund Site Community Involvement Coordinator, ZaNetta Purnell (contact info on first page).

ALONG THE RIVER

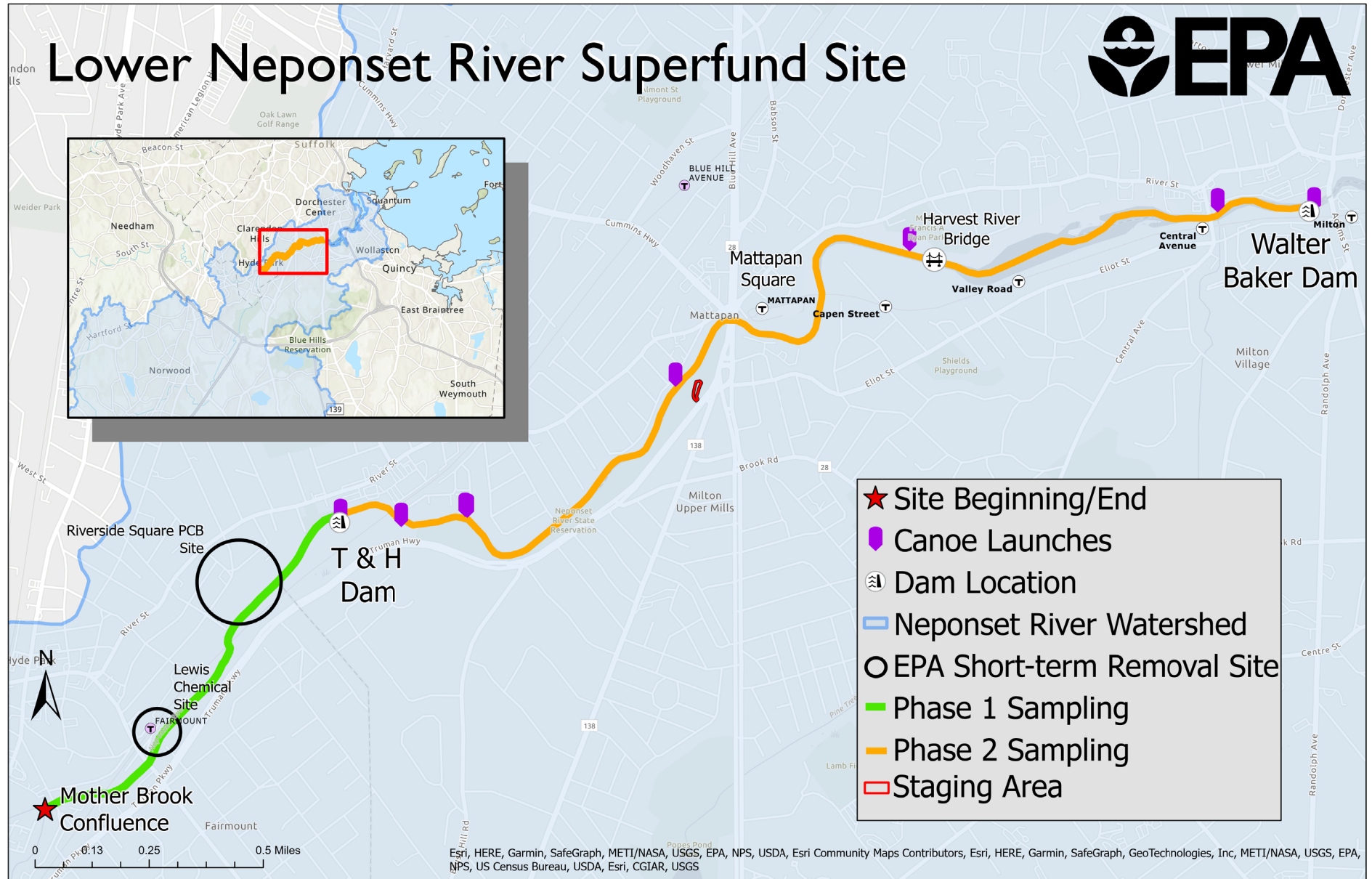
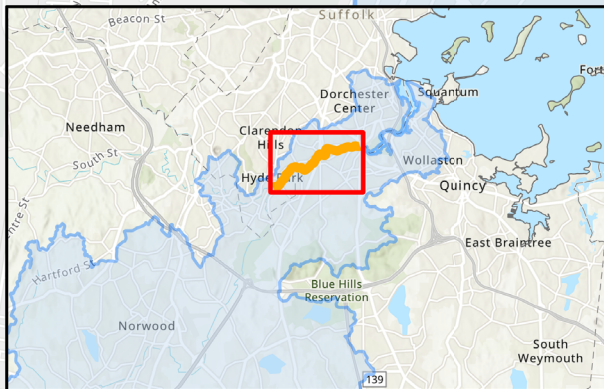
The Riverside Square PCB Site

The Riverside Square PCB Site is located along the northern bank of the Lower Neponset River within the Riverside Square area in Hyde Park. From the 1930s through the 1970s, several industries using PCBs operated in the Neponset River Basin, one of the most industrialized basins in the United States. In 1962 and 1964, to control flooding, the river was dredged by the Metropolitan District Commission, now a part of the Massachusetts Department of Conservation and Recreation (DCR). Dredging is the process of cleaning out the bed of the river by scooping out sediment (mud) and debris with a machine called a dredge. The dredged materials, or “spoils,” were placed in several locations along the banks of the river, essentially creating new land. The Riverside Square PCB Site is one of those riverbank locations. During 2023, EPA collected about 500 soil samples from the Site. EPA decided to remove contaminated soil in this area and will start the removal action this Fall.

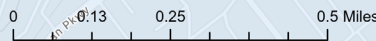
The Lewis Chemical Site

The Lewis Chemical Site is downstream of the Mother Brook and Neponset River confluence. It is located on Fairmount Court in Hyde Park, next to the Fairmount Massachusetts Bay Transportation Authority (MBTA) train station. From 1963 to 1983, the former Lewis Chemical industrial facility collected, transported, stored, and processed hazardous wastes containing PCBs. In October of 2022, EPA evaluated sampling data to determine if the PCBs and other collocated contamination within the Site’s soil posed a risk to human health and the environment. Starting in 2023, EPA excavated soils contaminated with PCBs, volatile organic compounds, asbestos, and lead from the Lewis Chemical Site. EPA shipped 5,703 tons of contaminated soils from the Site to EPA-approved hazardous waste disposal facilities. The excavated areas were backfilled with clean soil and revegetated with grass seed. EPA will complete the removal action by the end of September 2024.

Lower Neponset River Superfund Site



- ★ Site Beginning/End
- 🚣 Canoe Launches
- 🏰 Dam Location
- ▭ Neponset River Watershed
- EPA Short-term Removal Site
- Phase 1 Sampling
- Phase 2 Sampling
- ▭ Staging Area



Esri, HERE, Garmin, SafeGraph, METI/NASA, USGS, EPA, NPS, USDA, Esri Community Maps Contributors, Esri, HERE, Garmin, SafeGraph, GeoTechnologies, Inc, METI/NASA, USGS, EPA, NPS, US Census Bureau, USDA, Esri, CGIAR, USGS