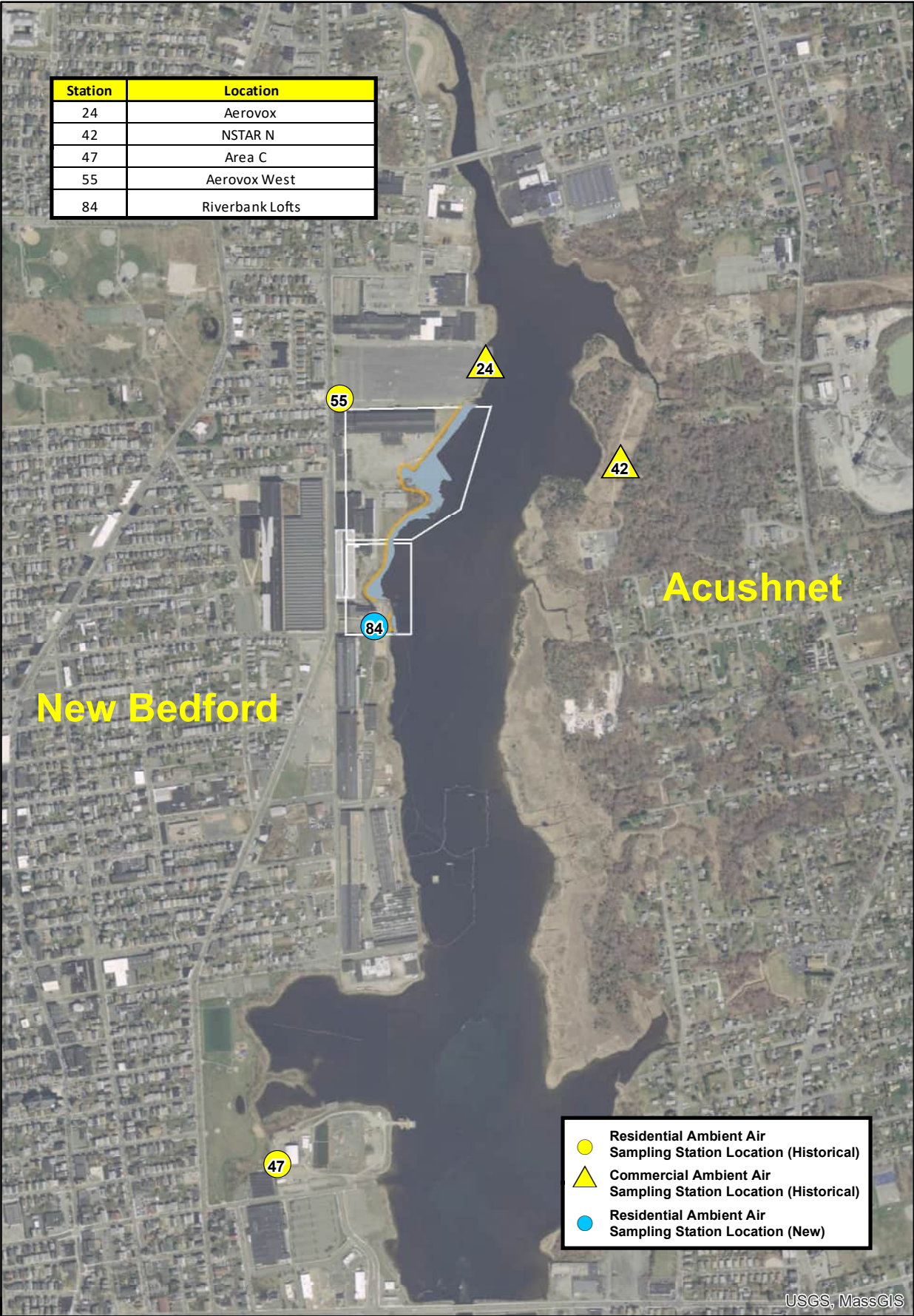


Table E-1
 Ambient Air Monitoring Program - Total Detectable PCB Homologues
 New Bedford Harbor Superfund Site
 Current as of 10/1/2024

Sampling Date	PCB Concentration by Location (ng/m ³ in 24-hour time-weighted average)																																																				
	24 Aerovox	25 Manomet	26 Cliffex	27 Porter	30 Fibre Leather	42 NSTAR North	43 Veranda	44 Taber	46 Coffin	Area C			Area D			53 Dredge	55 Aerovox West	56 Acushnet Park	57 Riverside Park	58 Pearl	59 Popes	60 Wash burn	61 South Fence	62 Century House	63 Boothouse	64 Pilgrim	65 LINC Dredge	66 Huttles-ton	67 Revere	68 Marsh Island	69 North Street	74 Beech St		75 Locuyer	76 Locuyer North	77 Locuyer South	78 Howard	79 Ball Plant	80 Byamans	83 Beach	84 Riverbank Lofts												
											47	48	49	50	51	52																																					
12/18/19	150	<1.39		<1.39	NS	NS	8.07	<1.39	<1.39	<1.39^{1.39d}	NS	NS	3.94	NS	<1.39	NS										2.72	15.8		<1.39																			2019 Dredge Area R and Veranda Inlet remedial results.					
11/19/19	244	5.47		<1.39	NS	NS	9.69	<1.39	<1.39	10.8/12.7^d	NS	NS	2.68	NS	13.2	NS										<1.39	23.7		<1.39																				2019 Dredge Area S and Pierce Mill Cove remedial results.				
10/28/19	139	20.7		<1.39	NS	NS	1.71	<1.39	4.08	8.53/6.11^d	NS	NS	7.99	NS	6.39	NS										<1.39	6.32		6.39																				2019 Dredge Area R and Pierce Mill Cove remedial results.				
10/01/19	79.3	36.0		2.89	16.9	18.1	27.5	16.3	9.31	2.36/9.26^d	NS	NS	11.1	NS	NS	14.9	NS									19.3		<1.39																					2019 Dredge Area L, P, and Pierce Mill Cove remedial results. First air monitoring event for mechanical dredging operation.				
08/19/19	19.3	58.2		24.3	NS	NS	20.7		37.2	18.9/48.1^d	NS	NS	30.3	NS	NS	130	NS																															2019 Dredge Area S remedial results. The pump for the duplicate on Station 47 only ran for 15 hours. Because the elapsed time was more than 50 percent of the total time, the sample was retained for analysis.					
07/25/19	51.5	54.7		17.2	NS	NS	18.2		29.9	47.1/47.5^d	NS	NS	20.1	NS	NS	230	NS																															2019 Dredge Area R remedial results.					
06/26/19	28.9	49.7		NS	30.0	18.9	9.18		NS	27.4/21.3^d	NS	NS	16.8	NS	NS	112	NS																																2019 Dredge Area L remedial event results.				
06/05/19	153	46.8		NS	49.7	29.6	35.8		NS	26.9/32.4^d	NS	NS	27.6	NS	NS	123	NS																																2019 Dredge Area L remedial event results.				
04/23/19	17.5	25.0		NS	18.5	7.17	4.44		NS	11.4/10.0^d	NS	NS	13.0	NS	NS	137	NS																																2019 Dredge Area H remedial event and Area L background event results.				
03/26/19	NS	26.7		NS	26.4	20.7	12.4		NS	9.6/12.50^d	NS	NS	6.13	NS	NS	59.0	NS																															2019 Dredge Area H remedial event results.					
02/26/19	NS	<1.39		NS	<1.39	40.4/3	17.5		NS	<1.39^{1.39d}	NS	NS	<1.39	NS	NS	NS	NS																																2019 Dredge Area H background monitoring event results.				
12/19/18	32.6	NS		NS	19.6	19.4	NS		NS	23.6/22.1^d	NS	NS	20.8	NS	NS	114	NS																																	2018 Dredge Areas L, N, & O remedial event and Aerovox Capping remedial event results.			
11/28/18	<1.39	NS		NS	<1.39	17.6	NS		NS	<1.39^{1.39d}	NS	NS	1.60	NS	NS	15.1	NS																																2018 Dredge Areas L, N, & O remedial event and Aerovox Capping remedial event results.				
10/24/18	3.3	NS		NS	<1.39	23.2	NS		NS	4.31/3.75^d	NS	NS	4.87	NS	NS	71.5	<1.39																																	2018 Dredge Areas L, N, & O remedial event and Aerovox Capping remedial event results.			
10/10/18	63.3	NS		NS	NS	NS	NS		NS	NS	NS	NS	NS	NS	NS	NS	11.3/10.3/4																																	2018 Aerovox Capping remedial event results.			
09/24/18	74.0	NS		NS	34.9	17.9	NS		NS	37.5/32.4^d	NS	NS	31.4	NS	NS	146	NS																																	2018 Dredge Areas L, N, & O remedial event.			
08/24/18	123	NS		NS	32.9	39.4	NS		NS	31.5/15.4^d	NS	NS	23.5	NS	NS	141	NS																																	2018 Dredge Areas L, N, & O remedial event.			
07/24/18	317	NS		NS	264	8.21	NS		NS	139/143^d	NS	NS	38.5	NS	NS	371	NS																																		2018 Dredge Areas L, N, & O remedial event and Between the Bridges remedial event.		
05/30/18	72.9	NS		NS	67.9	5.47	NS		NS	42.6/37.8^d	NS	NS	22.2	NS	NS	NS	NS																																	2018 Dredge Areas L, N, & O background event.			
05/17/18	NS	NS		NS	NS	NS	NS	14.0/18.3^d	NS	NS	NS	NS	NS	NS	NS	NS	NS										7.71	NS	NS	22.2																				2018 North Street Salt Marsh remedial event.			
04/23/18	NS	31.3		7.4	46.8	16.3	NS	NS	NS	38.5/42.4^d	NS	NS	16.4	NS	NS	82.3	NS																																	2018 Cable Crossing remedial event.			
03/27/18	NS	41.5		6.79	22.9	12.2	11.1	11.7	NS	19.0	NS	NS	21.5/24.3/4	NS	NS	611	NS																																	2018 Cable Crossing and Between the Bridges remedial events. The pump on Station 65-Lower Harbor Dredge, stopped prematurely and did not run long enough to collect a valid sample.			
02/21/18	NS	NS		NS	NS	NS	5.21	4.03	NS	17.2	NS	NS	17.8	NS	NS	NS	NS																																			2018 Lower Harbor Best Value remedial event. The pump for the duplicate sample at Station 447 did not run for the prescribed period and the sample was not submitted for analysis.	
01/25/18	NS	NS		NS	NS	NS	<1.39	<1.39	NS	<1.39^{1.39d}	NS	NS	<1.39	NS	NS	NS	NS																																				2018 Lower Harbor Best Value remedial event. This event also included a background sample for Station 69-North Street to support remediation of the North Street Salt Marsh.
12/19/17	NS	NS		NS	NS	NS	27.8	9.64	NS	9.39/12.6^d	NS	NS	11.2	NS	NS	NS	NS																																			2017 Lower Harbor Best Value remedial event.	
12/13/17	NS	<1.39		8.1	2.0	13	NS	NS	NS	1.4^{1.39d}	NS	NS	9.6	NS	NS	191	NS																																			2017 Cable Crossing remedial event.	
11/28/17	NS	NS		NS	NS	NS	11	22	NS	48/29/4	NS	NS	6.8	NS	NS	NS	NS																																				2017 Lower Harbor Best Value remedial event.
11/15/17	NS	29		1.5	43	4.8	NS	NS	NS	31/34/4	NS	NS	25	NS	NS	825	NS																																				2017 Cable Crossing remedial event.
10/23/17	NS	NS		NS	NS	NS	5	24	NS	75/120/4	NS	NS	32	NS	NS	NS	NS																																				2017 Lower Harbor Best Value remedial event.
10/19/17	NS	34		23	22	28	NS	NS	NS	29	NS	NS	15	NS	NS	171	NS																																				2017 Cable Crossing remedial event. The duplicate sample for Station 47-Area C did not run longer than 12 hours and was not sent to the laboratory for analysis.

Station	Location
24	Aerovox
42	NSTAR N
47	Area C
55	Aerovox West
84	Riverbank Lofts

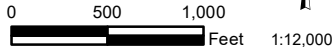


	Residential Ambient Air Sampling Station Location (Historical)
	Commercial Ambient Air Sampling Station Location (Historical)
	Residential Ambient Air Sampling Station Location (New)

Legend

- PROPOSED ACCESS ROAD
- EXCAVATION AREA

Aerial Photography MASSGIS 2014



USGS, MassGIS

JACOBS

Site-Specific Ambient Air Sampling Locations for WZ2-3 Work
New Bedford Harbor Superfund Site

NAME: jacobso Date: 9/20/2012 Figure 3

Path: Y:\NBH\Projects\3585G\001\20220929_Air_Sampling_Stations\Acushnet\air_ambient_sampling_stations_20220929_WZ23.mxd