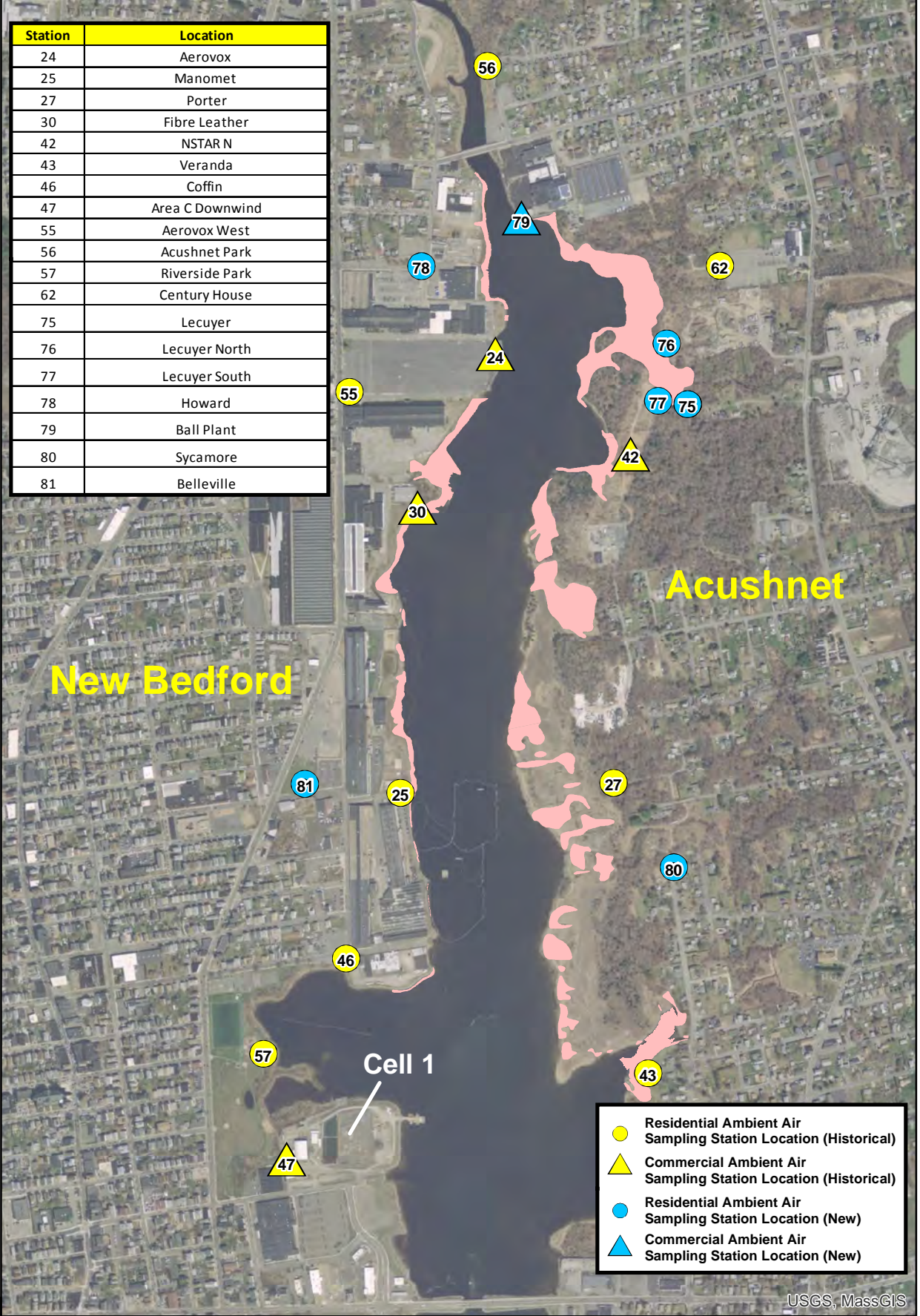


Table E-1
 Ambient Air Monitoring Program - Total Detectable PCB Homologues
 New Bedford Harbor Superfund Site
 Current as of 07/21/2021

Sampling Date	PCB Concentration by Location (ng/m ³ in 24-hour time-weighted average) ¹																																									
	24 Aeroxov	25 Manomet	25 Clifton	27 Porter	30 Fibre Leather	42 NSTAR North	43 Veranda	44 Taber	46 Coffin	Area C			Area D			53 Dredge	55 Aeroxov West	56 Acushnet Park	57 Riverside Park	58 Pearl	59 Popes	60 Washburn	61 South Fence	62 Century House	63 Boathouse	64 Pilgrim	65 LIACC Dredge	66 Huttleston		67 Revere	68 Marsh Island	69 North Street	74 Beach St	75 Lecuyer	76 Lecuyer North	77 Lecuyer South	78 Howard	79 Ball Plant	80 Sycamore			
										47	48	49	50	51	52																											
07/13/21	NS	34.7		<1.39	43.9	NS	NS		11.8	12.4/14.6 d	NS	NS				NS																								NS	2021 West Zones 4 and 5 remedial results	
06/03/21	NS	14.9		<1.39	13.4	NS	NS		10.9	8.86/4.35 d	NS	NS				NS																									NS	2021 West Zones 4 and 5 remedial results
05/17/21	NS	NS		27.2	NS	NS	23.1		12.1	15.0/16.5 d	NS	NS				NS	NS						NS										NS	NS	NS	NS	NS	NS	NS	2.11	2021 East Zones 3, 4, and 5 remedial results	
04/14/21	NS	NS		1.53	NS	NS	<1.39		6.79	5.99/5.29 d	NS	NS				NS	NS						NS										NS	NS	NS	NS	NS	NS	NS	<1.39	2021 East Zones 3, 4, and 5 remedial results	
03/16/21	NS	NS		<1.39	NS	NS	1.78		<1.39	<1.39/1.39d	NS	NS				NS	NS						NS										NS	NS	NS	NS	NS	NS	NS	<1.39	2021 East Zones 3, 4, and 5 remedial results	
11/19/20	25.6	NS		NS	NS	NS	NS	11.5	NS	<1.39/1.39d	NS	NS	<1.39	NS	NS	NS	6.47						NS			6.07			<1.39				NS	NS	NS	<1.39	31.1		2020 West Zone 1 remedial results			
10/19/20	28.2	NS		NS	NS	NS	NS	2.79	NS	21.8/22.4 d	NS	NS	12.7	NS	NS	NS	5.17						NS										16.3	27.8	NS	5.67	42.1		2020 West Zone 1 and East Zone 1 remedial results			
10/08/20	6.43	NS		NS	NS	NS	NS	<1.39	NS	1.60/1.3.9d	NS	NS	1.44	NS	NS	NS	1.82						NS			<1.39			<1.39				30.6	26.4	NS	<1.39	17.4		2020 West Zone 1 and East Zone 1 remedial results			
09/24/20	NS	NS		NS	NS	NS	NS	NS	NS	NS	NS	NS	NS	NS	NS	NS	NS						NS										110	319	106				2020 East Zone 1 follow-up to 2nd trigger exceedance at #75 Lecuyer on 09/03/2020			
09/03/20	72.8	NS		NS	NS	30.7	25.6	10.1	20.4	18.2/15.4 d	NS	NS	10.7	NS	NS	NS	NS						35.8			9.58			7.08											2020 Upper Harbor Post-dredging and East Zone 1 remedial results.		
08/06/20	92.6	67.1		NS	NS	122	30.0	13.8	34.2	22.8/7.26 d	NS	NS	11.1	NS	NS	NS	NS						56.1						NA							44.0			2020 Upper Harbor Post-dredging and East Zone 1 remedial results. The duplicate at Station 47 (Area C) had lab QA issues and may be considered biased low. The sample from Station 67 (Revere) did not run for the minimum 12 hours to be submitted for analysis.			
07/07/20	97.8	40.8		NS	NS	8.81	8.17	14.4	34.9	4.07/4.40 d	NS	NS	8.75	NS	NS	NS	NS						20.7																	2020 Upper Harbor Post-dredging and East Zone 1 remedial results.		
06/02/20	60.6	29.9		NS	NS	13.7	16.8	18.3	NS	10.5/12.7 d	NS	NS	7.43	NS	NS	NS	NS																							2020 Upper Harbor Post-dredging and East Zone 1 remedial results		
05/05/20	5.06	NS		NS	NS	21.7	NS	<1.39	NS	24.3/21.9 d	NS	NS	10.1	NS	NS	NS	NS																							2020 East Zone 1 remedial results.		
04/06/20	26.0	NS		NS	NS	8.88	NS	3.08	NS	11.5/15.6 d	NS	NS	1.82	NS	NS	NS	NS						<1.39																	2020 East Zone 1 remedial results.		
03/03/20	30.0	NS		NS	NS	NS	6.99	8.65	22.4	8.2/9.64 d	NS	NS	8.35	NS	NS	39.5	NS									8.39	31.6													2019 Dredge Areas U and V remedial results.		
01/28/20	3.18	<1.39		<1.39	NS	NS	4.10	<1.39	<1.39	34.9/32.5 d	NS	NS	1.69	NS	NS	5.33	NS										1.89	13.7													2019 Dredge Area S remedial results.	
12/18/19	150	<1.39		<1.39	NS	NS	8.07	<1.39	<1.39	<1.39/1.39d	NS	NS	3.94	NS	NS	<1.39	NS										2.72	15.8													2019 Dredge Area R and Veranda Inlet remedial results.	
11/19/19	244	5.47		<1.39	NS	NS	9.69	<1.39	<1.39	10.8/12.7 d	NS	NS	2.68	NS	NS	13.2	NS																								2019 Dredge Area S and Pierce Mill Cove remedial results.	
10/28/19	139	20.7		<1.39	NS	NS	1.71	<1.39	4.08	8.5/8.11 d	NS	NS	7.99	NS	NS	6.39	NS										<1.39	6.32													2019 Dredge Area R and Pierce Mill Cove remedial results.	
10/01/19	79.3	36.0		2.89	16.9	18.1	27.5	16.3	9.31	2.36/9.26 d	NS	NS	11.1	NS	NS	14.9	NS																							2019 Dredge Area L, P, and Pierce Mill Cove remedial results. First air monitoring event for mechanical dredging operation.		
08/19/19	19.3	58.2		24.3	NS	NS	20.7		37.2	18.9/48.1 d	NS	NS	30.3	NS	NS	130	NS																							2019 Dredge Area S remedial results. The pump for the duplicate on Station 47 only ran for 19 hours. Because the elapsed time was more than 50 percent of the total time, the sample was retained for analysis.		
07/25/19	51.5	54.7		17.2	NS	NS	18.2		29.9	47.1/47.5 d	NS	NS	20.1	NS	NS	230	NS																								2019 Dredge Area R remedial results.	
06/26/19	28.9	49.7		NS	30.0	18.9	9.18		NS	27.4/21.5 d	NS	NS	16.8	NS	NS	112	NS																								2019 Dredge Area L remedial event results.	
06/05/19	153	46.8		NS	49.7	29.6	35.8		NS	26.9/32.4 d	NS	NS	27.6	NS	NS	123	NS																								2019 Dredge Area L remedial event results.	
04/23/19	17.5	25.0		NS	18.5	7.17	4.44		NS	11.4/10.0 d	NS	NS	13.0	NS	NS	137	NS																								2019 Dredge Area H remedial event and Area L background event results.	
03/26/19	NS	26.7		NS	26.4	20.7	12.4		NS	9.6/12.50 d	NS	NS	6.13	NS	NS	59.0	NS																								2019 Dredge Area H remedial event results.	
02/26/19	NS	<1.39		NS	<1.39	40.4	17.5		NS	<1.39/1.39d	NS	NS	<1.39	NS	NS	NS	NS																								2019 Dredge Area H background monitoring event results.	

Station	Location
24	Aerovox
25	Manomet
27	Porter
30	Fibre Leather
42	NSTAR N
43	Veranda
46	Coffin
47	Area C Downwind
55	Aerovox West
56	Acushnet Park
57	Riverside Park
62	Century House
75	Lecuyer
76	Lecuyer North
77	Lecuyer South
78	Howard
79	Ball Plant
80	Sycamore
81	Belleville

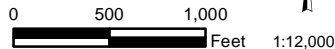


- Residential Ambient Air Sampling Station Location (Historical)
- ▲ Commercial Ambient Air Sampling Station Location (Historical)
- Residential Ambient Air Sampling Station Location (New)
- ▲ Commercial Ambient Air Sampling Station Location (New)

Legend

INTERTIDAL REMEDIATION AREA

Aerial Photography MASSGIS 2014



JACOBS

Available Ambient Air Sampling Station Locations
New Bedford Harbor Superfund Site

NAME: jacobsl Date: 3/10/2021

Figure 2-1

Path: Y:\NBH\Projects\3585G\001\20210301\AcGIS\NBH_ambient_sampling_stations_2021.mxd