

Table E-1  
 Ambient Air Monitoring Program - Total Detectable PCB Homologues  
 New Bedford Harbor Superfund Site  
 Current as of 01/09/2018

| Sampling Date | PCB Concentration by Location<br>(ng/m <sup>3</sup> in 24-hour time-weighted average) <sup>1</sup> |            |            |           |                  |                |            |            |           |              |    |    |            |    |    |           |                 |                  |                   |          |          |              |                |                  |              |            |                |               |       |           |                 |  |  |
|---------------|--|------------|------------|-----------|------------------|----------------|------------|------------|-----------|--------------|----|----|------------|----|----|-----------|-----------------|------------------|-------------------|----------|----------|--------------|----------------|------------------|--------------|------------|----------------|---------------|-------|-----------|-----------------|--|--|
|               | 24 Aerovox   | 25 Manomet | 25 Cliftex | 27 Porter | 30 Fibre Leather | 42 NSTAR North | 43 Veranda | 44 Taber   | 46 Coffin | Area C       |    |    | Area D     |    |    | 53 Dredge | 55 Aerovox West | 56 Acushnet Park | 57 Riverside Park | 58 Pearl | 59 Popes | 60 Wash-burn | 61 South Fence | 62 Century House | 63 Boathouse | 64 Pilgrim | 65 LHCC Dredge | 66 Huttleston |       | 67 Revere | 68 Marsh Island | 69 North Street                              | 74 Beach St  |
|               |  |            |            |           |                  |                |            |            |           |              | 47 | 48 | 49         | 50 | 51 | 52        |                 |                  |                   |          |          |              |                |                  |              |            |                |               |       |           |                 |  |  |
| 12/19/18      | 32.6   | NS         |            | NS        | 19.6             | 19.4           | NS         | NS         | NS        | 23.6/22.1d   | NS | NS | 20.8       | NS | NS | 114       | NS              |                  |                   | NS       | NS       | NS           |                | 15.0             |              | NS         | NS             | NS            | NS    |           | NS              |  | 2018 Drege Areas I, N, & O remedial event and Aerovox Capping remedial event results. Unvalidated results.   |
| 11/28/18      | <1.39  | NS         |            | NS        | <1.39            | 17.6           | NS         | NS         | NS        | <1.39/<1.39d | NS | NS | 1.60       | NS | NS | 15.1      | NS              |                  |                   | NS       | NS       | NS           |                | 3.88             |              | NS         | NS             | NS            | NS    |           | NS              |  | 2018 Drege Areas I, N, & O remedial event and Aerovox Capping remedial event results. Unvalidated results.   |
| 10/24/18      | 3.3  | NS         |            | NS        | <1.39            | 23.2           | NS         | NS         | NS        | 4.31/3.75d   | NS | NS | 4.97       | NS | NS | 71.5      | <1.39           |                  |                   | NS       | NS       | NS           |                | <1.39            |              | NS         | NS             | NS            | NS    |           | NS              |  | 2018 Drege Areas I, N, & O remedial event and Aerovox Capping remedial event results.  |
| 10/10/18      | 63.3   | NS         |            | NS        | NS               | NS             | NS         | NS         | NS        | NS           | NS | NS | NS         | NS | NS | NS        | 11.3/10.3d      |                  |                   | NS       | NS       | NS           |                | 42.1             |              | NS         | NS             | NS            | NS    |           | NS              |  | 2018 Aerovox Capping remedial event results.   |
| 09/24/18      | 74.0   | NS         |            | NS        | 34.9             | 17.9           | NS         | NS         | NS        | 37.5/32.4d   | NS | NS | 31.4       | NS | NS | 146       | NS              |                  |                   | NS       | NS       | NS           |                | 1.43             |              | NS         | NS             | NS            | NS    |           | NS              |  | 2018 Drege Areas I, N, & O remedial event.   |
| 08/24/18      | 123  | NS         |            | NS        | 32.9             | 39.4           | NS         | NS         | NS        | 31.5/15.4d   | NS | NS | 23.5       | NS | NS | 141       | NS              |                  |                   | NS       | NS       | NS           |                | 5.79             |              | NS         | NS             | NS            | NS    |           | NS              |  | 2018 Drege Areas I, N, & O remedial event.   |
| 07/24/18      | 317  | NS         |            | NS        | 264              | 8.21           | NS         | NS         | NS        | 135/143d     | NS | NS | 38.5       | NS | NS | 371       | NS              |                  |                   | NS       | NS       | NS           |                | 16.7             |              | NS         | NS             | NS            | NS    |           | NS              | 40.7   | 2018 Drege Areas I, N, & O remedial event and Between the Beidges remedial event.  |
| 05/30/18      | 72.9   | NS         |            | NS        | 67.9             | 5.47           | NS         | NS         | NS        | 42.6/37.8d   | NS | NS | 22.2       | NS | NS | NS        | NS              |                  |                   | NS       | NS       | NS           |                | 24.4             |              | NS         | NS             | NS            | NS    |           | NS              |  | 2018 Dredge Areas I,N,&O background event.   |
| 05/17/18      | NS   | NS         |            | NS        | NS               | NS             | NS         | 14.0/18.3d | NS        | NS           | NS | NS | NS         | NS | NS | NS        | NS              |                  |                   | NS       | NS       | NS           |                | 7.71             | NS           | NS         | 22.2           |               |       | 7.93      |                 | 2018 North Street Salt Marsh remedial event. |  |
| 04/23/18      | NS   | 31.3       |            | 7.4       | 46.8             | 16.3           | NS         | NS         | NS        | 38.5/42.4d   | NS | NS | 16.4       | NS | NS | 82.3      | NS              |                  |                   | NS       | NS       | NS           |                |                  |              | NS         | NS             | NS            | NS    |           | NS              |  | 2018 Cable Crossing remedial event.  |
| 03/27/18      | NS   | 41.5       |            | 6.79      | 22.9             | 12.2           | 11.1       | 11.7       | NS        | 19.0         | NS | NS | 21.5/24.3d | NS | NS | 611       | NS              |                  |                   | NS       | NS       | 19.1         |                |                  |              | NS         | NS             | NS            | NS    |           | NS              |  | 2018 Cable Crossing and Between the Bridges remedial events. The pump on Station 65--Lower Harbor Dredge, stopped prematurely and did not run long enough to collect a valid sample. |
| 02/21/18      | NS   | NS         |            | NS        | NS               | NS             | 5.21       | 4.03       | NS        | 17.2         | NS | NS | 17.8       | NS | NS | NS        | NS              |                  |                   | 3.56     | 4.53     | 12.3         |                |                  |              | 5.18       | 12.7           | 3.53          | 1.89  |           | NS              |  | 2018 Lower Harbor Best Value remedial event. The pump for the duplicate sample at Station #47 did not run for the prescribed period and the sample was not submitted for analysis.   |
| 01/25/18      | NS   | NS         |            | NS        | NS               | NS             | <1.39      | <1.39      | NS        | <1.39/<1.39d | NS | NS | <1.39      | NS | NS | NS        | NS              |                  |                   | <1.39    | <1.39    | <1.39        |                |                  |              | <1.39      | <4.50          | <1.39         | <1.39 |           | <1.39           |  | 2018 Lower Harbor Best Value remedial event. This event also included a background sample for Station 69-North Street to support remediation of the North Street Salt Marsh.         |
| 12/19/17      | NS   | NS         |            | NS        | NS               | NS             | 27.8       | 9.64       | NS        | 9.39/12.6d   | NS | NS | 11.2       | NS | NS | NS        | NS              |                  |                   | <1.39    | 2.82     | <1.39        |                |                  |              | 14.2       | 4.87           | 12.6          | <1.39 |           |                 |  | 2017 Lower Harbor Best Value remedial event.   |
| 12/13/17      | NS   | <1.39      |            | 8.1       | 2.0              | 13             | NS         | NS         | NS        | 1.4/<1.39d   | NS | NS | 9.6        | NS | NS | 191       | NS              |                  |                   | NS       | NS       | NS           |                |                  |              | NS         | NS             | NS            | NS    |           |                 |  | 2017 Cable Crossing remedial event.  |
| 11/28/17      | NS   | NS         |            | NS        | NS               | NS             | 11         | 22         | NS        | 48/29d       | NS | NS | 6.8        | NS | NS | NS        | NS              |                  |                   | 18       | 5.2      | 13           |                |                  |              | 1.7        | 6.5            | 2.5           | 9.3   |           |                 |  | 2017 Lower Harbor Best Value remedial event.   |
| 11/15/17      | NS   | 29         |            | 1.5       | 43               | 4.8            | NS         | NS         | NS        | 31/34d       | NS | NS | 25         | NS | NS | 825       | NS              |                  |                   | NS       | NS       | NS           |                |                  |              | NS         | NS             | NS            | NS    |           |                 |  | 2017 Cable Crossing remedial event.  |
| 10/23/17      | NS   | NS         |            | NS        | NS               | NS             | 5          | 24         | NS        | 75/120d      | NS | NS | 32         | NS | NS | NS        | NS              |                  |                   | 5        | 22       | 97           |                |                  |              | 16         | 45             | 2             | 35    |           |                 |  | 2017 Lower Harbor Best Value remedial event.   |
| 10/19/17      | NS   | 34         |            | 23        | 22               | 28             | NS         | NS         | NS        | 29           | NS | NS | 15         | NS | NS | 171       | NS              |                  |                   | NS       | NS       | NS           |                |                  |              | NS         | NS             | NS            | NS    |           |                 |  | 2017 Cable Crossing remedial event. The duplicate sample for Station 47--Area C did not run longer than 12 hours and was not sent to the laboratory for analysis.                    |
| 09/26/17      | NS   | NS         |            | NS        | NS               | NS             | 34         | 6          | NS        | 42.9/25d     | NS | NS | 46         | NS | NS | NS        | NS              |                  |                   | 6        | 13       | 48           |                |                  |              | 15         | 33             | ND            | 26    |           |                 |  | 2017 Lower Harbor Best Value remedial event.   |
| 09/13/17      | NS   | 82         |            | 35        | 41               | 30             | NS         | NS         | NS        | 8/15d        | NS | NS | 16         | NS | NS | NS        | NS              |                  |                   | NS       | NS       | NS           |                |                  |              | NS         | NS             | NS            | NS    |           |                 |  | 2017 Cable Crossing background event.  |
| 08/24/17      | NS   | NS         |            | NS        | NS               | NS             | NS         | 7.57/24.4d | NS        | NS           | NS | NS | NS         | NS | NS | NS        | NS              |                  |                   | NS       | NS       | 3.82         |                |                  |              | NS         | NS             | NS            | 16.9  | 38.6      |                 |  | 2017 Marsh Island Excavation results.  |

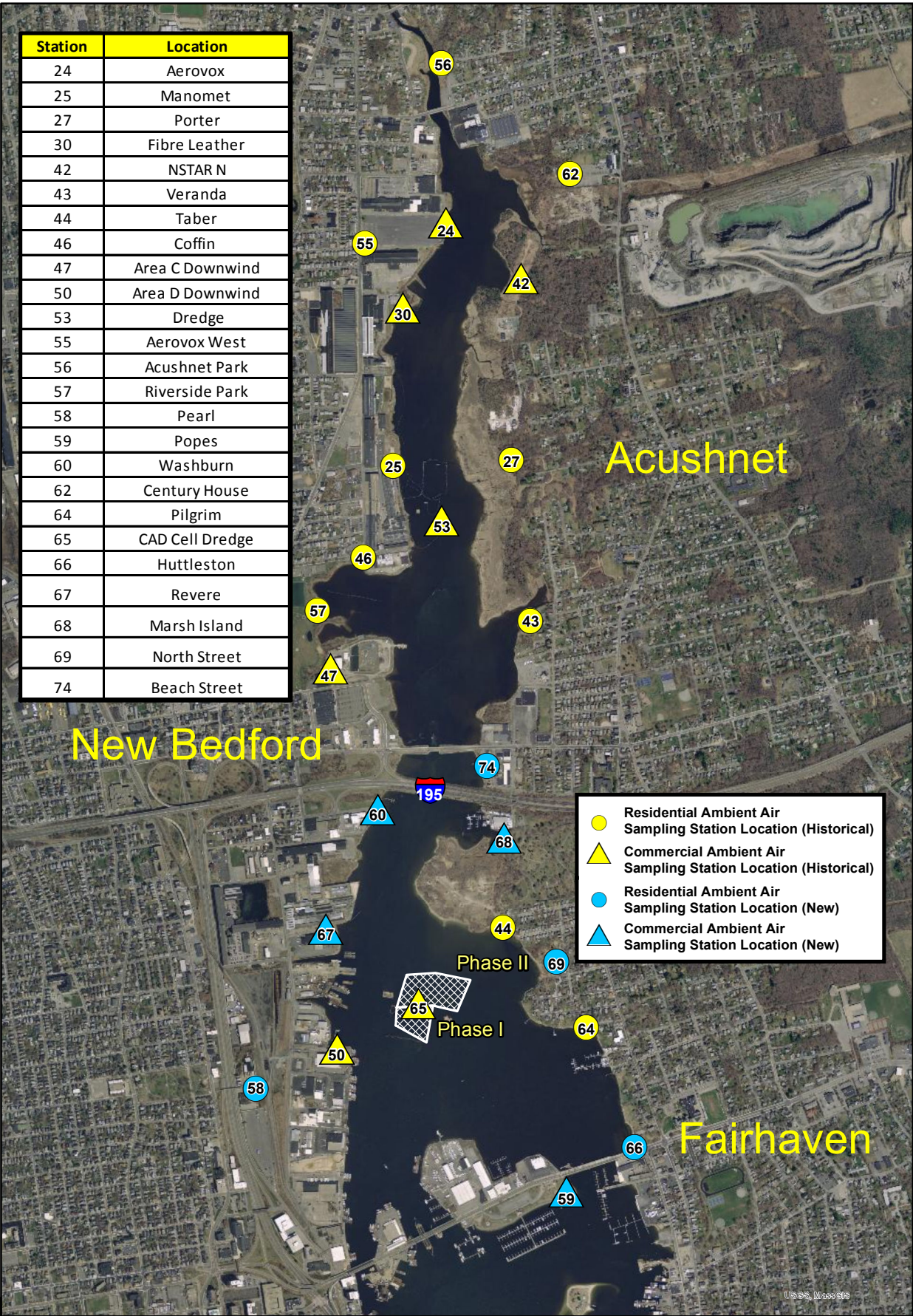
Table E-1  
Ambient Air Monitoring Program - Total Detectable PCB Homologues  
New Bedford Harbor Superfund Site  
Current as of 01/09/2018

| Sampling Date | PCB Concentration by Location<br>(ng/m <sup>3</sup> in 24-hour time-weighted average) <sup>1</sup> |            |             |                 |                  |                |            |                 |           |                  |    |    |                 |    |    |                 |                 |                  |                   |                 |          |                 |                |                  |              |                 |      |                 |                 |           |                 |                 |  |
|---------------|--|------------|-------------|-----------------|------------------|----------------|------------|-----------------|-----------|------------------|----|----|-----------------|----|----|-----------------|-----------------|------------------|-------------------|-----------------|----------|-----------------|----------------|------------------|--------------|-----------------|------|-----------------|-----------------|-----------|-----------------|-----------------|--|
|               | 24 Aerovox   | 25 Manomet | 25 Clifftex | 27 Porter       | 30 Fibre Leather | 42 NSTAR North | 43 Veranda | 44 Taber        | 46 Coffin | Area C           |    |    | Area D          |    |    | 53 Dredge       | 55 Aerovox West | 56 Acushnet Park | 57 Riverside Park | 58 Pearl        | 59 Popes | 60 Washburn     | 61 South Fence | 62 Century House | 63 Boathouse | 64 Pilgrim      |      | 65 LHCC Dredge  | 66 Huttleston   | 67 Revere | 68 Marsh Island | 69 North Street | 74 Beach St  |
|               |  |            |             |                 |                  |                |            |                 |           |                  | 47 | 48 | 49              | 50 | 51 | 52              |                 |                  |                   |                 |          |                 |                |                  |              |                 |      |                 |                 |           |                 |                 |  |
| 07/19/17      | NS   | NS         |             | NS              | NS               | NS             | 70.8       | 21.1            | NS        | 34.2/18.8 d      | NS | NS | 9.38            | NS | NS | NS              | NS              |                  |                   | 14.0            | 13.0     | 44.7            |                |                  |              | 42.4            | NS   | 26.8            | 17.6            | 49.4      |                 |                 | 2017 Lower Harbor Best Value/Marsh Island background event. Station 50 Area D ran for 878 minutes, but was retained because it ran for more than 12 hours. Unvalidated Results.  |
| 04/03/17      | NS   | 4.79       |             | ND <sub>R</sub> | NS               | NS             | 3.60       | ND <sub>R</sub> | 2.54      | 2.88             | NS | NS | ND <sub>R</sub> | NS | NS | ND <sub>R</sub> | NS              |                  |                   | ND <sub>R</sub> | 3.01     | ND <sub>R</sub> |                |                  |              | ND <sub>R</sub> | NS   | ND <sub>R</sub> | ND <sub>R</sub> |           |                 |                 | 2017 Upper Harbor Dredging-Lower Harbor CAD Cell filling. The pump used on the dredge was removed after 8 hours and placed at Area D. Both Area D and the dredge were monitored for their full time intervals. The pump for the duplicate at Area C shut down sometime after inspection. Because it didn't run for at least 12 hours, the sample was discarded. Due to a laboratory error, all ND results (less than 1.39 ng/m <sup>3</sup> ) were rejected as a result of data validation. These are indicated by ND <sub>R</sub> . |
| 03/29/17      | NS   | NS         |             | NS              | NS               | NS             | 5.94       | NS              | ND        | 7.15/7.67 d      | NS | NS | NS              | NS | NS | NS              | NS              |                  | ND                | NS              | NS       | NS              |                |                  |              | NS              | NS   | NS              | NS              |           |                 |                 | 2017 Upper Harbor Excavation PMC results.  |
| 03/08/17      | NS   | 6.92       |             | 11.5            | NS               | NS             | 29.9       | 2.00            | 15.2      | <1.37/<br><1.39d | NS | NS | <1.39           | NS | NS | 71.9            | NS              |                  | NS                | <1.39           | <1.39    | <1.38           |                |                  |              | 12.8            | NS   | 5.35            | <1.39           |           |                 |                 | 2017 Upper harbor dredging lower harbor CAD cell placements. Note Pearl (#58) pump had stopped in mid-collection. The dredge pump (#53) had only run for 40 minutes prior to shutdown. The dredge pump (#53) was placed at #58 Pearl for remainder of day to collect a 6.5 m <sup>3</sup> sample. The dredge pump (#53) was placed onboard the dredge the following day (3/9/17) to collect a total sample of 2.15 m <sup>3</sup> . This was also the first round that was analyzed entirely by the low resolution mass spec method. |
| 02/23/17      | NS   | NS         |             | NS              | NS               | NS             | 4.01       | NS              | 22.7      | 2.38             | NS | NS | NS              | NS | NS | NS              | NS              |                  | 1.68              | NS              | NS       | NS              |                |                  |              | NS              | NS   | NS              | NS              |           |                 |                 | 2017 Upper Harbor Excavation PMC results. The duplicate pump for Station #47 Area C failed and no duplicate sample was submitted for analysis.   |
| 01/25/17      | NS   | 4.53       |             | 2.57            | NS               | NS             | 11.4       | 2.67            | 9.41      | 2.43 / 2.65d     | NS | NS | 2.66            | NS | NS | 6.35            | NS              |                  | NS                | 0.803           | NS       | 6.58            |                |                  |              | 2.91            | NS   | 3.84            | 3.07            |           |                 |                 | 2017 Upper harbor dredging lower harbor CAD cell placements.   |
| 01/12/17      | NS   | NS         |             | NS              | NS               | NS             | 18.2       | NS              | 15.9      | 1.90/1.90 d      | NS | NS | NS              | NS | NS | NS              | NS              |                  | <0.061            | NS              | NS       | NS              |                |                  |              | NS              | NS   | NS              | NS              |           |                 |                 | 2017 Upper Harbor Excavation PMC results.  |
| 12/06/16      | NS   | NS         |             | NS              | NS               | NS             | 3.56       | 0.679           | NS        | 5.32/5.10 d      | NS | NS | 5.41            | NS | NS | NS              | NS              |                  | NS                | NS              | 1.57     | 6.08            |                |                  |              | 1.14            | 11.7 | 0.48            | 4.86            |           |                 |                 | 2016 Lower Harbor Dredging in Moby Dick Marina Area A36.   |
| 12/01/16      | NS   | NS         |             | NS              | NS               | NS             | 19.7       | NS              | 1.04      | 1.10 / 1.21d     | NS | NS | NS              | NS | NS | NS              | NS              |                  | 0.0007            | NS              | NS       | NS              |                |                  |              | NS              | NS   | NS              | NS              |           |                 |                 | 2016 Upper Harbor Excavation PMC results.  |
| 11/10/16      | NS   | NS         |             | NS              | NS               | NS             | 13.7       | NS              | 4.72      | 1.64/1.63 d      | NS | NS | NS              | NS | NS | NS              | NS              |                  | 0.658             | NS              | NS       | NS              |                |                  |              | NS              | NS   | NS              | NS              |           |                 |                 | 2016 Upper Harbor Pre- excavation PMC results.   |
| 11/07/16      | NS   | NS         |             | NS              | NS               | NS             | 6.26       | 4.07            | NS        | 3.38             | NS | NS | 5.82/3.75d      | NS | NS | NS              | NS              |                  |                   | 0.416           | 3.55     | 7.29            |                |                  |              | 2.10            | 3.19 | NS              | 5.57            |           |                 |                 | 2016 Lower Harbor Dredging in Area A34. Dredge was sampled.  |
| 10/19/16      | NS   | NS         |             | NS              | NS               | NS             | 85.2       | 18.2            | NS        | 26.2             | NS | NS | 21.1/24.4d      | NS | NS | NS              | NS              |                  |                   | 3.89            | 13.0     | 30.2            |                |                  |              | 10.6            | 17.1 | NS              | 22.9            |           |                 |                 | 2016 Lower Harbor Dredging in Area A34. Dredge was sampled.  |
| 09/20/16      | NS   | NS         |             | NS              | NS               | NS             | 35.3       | 18.9            | NS        | 21.4             | NS | NS | 20.6/22.0d      | NS | NS | NS              | NS              |                  |                   | 2.50            | NS       | 59.5            |                |                  |              | 15.7            | 37.4 | NS              | 25.9            |           |                 |                 | 2016 Lower Harbor Dredging in Area A34. Dredge was sampled.  |
| 08/18/16      | NS   | NS         |             | NS              | NS               | NS             | 97.6       | 19.1            | NS        | 17.1/17.1 d      | NS | NS | 6.56            | NS | NS | NS              | NS              |                  |                   | 3.24            | 10.5     | 12.6            |                |                  |              | 11.6            | 30.1 | 11.6            | 9.95            |           |                 |                 | 2016 Lower Harbor Dredging in Area 35B. Dredge was sampled.  |
| 08/11/16      | NS   | 61.1       |             | 32.2            | 35.2/39.2d       | 35.6           | NS         | NS              | NS        | NS               | NS | NS | NS              | NS | NS | 704             | NS              |                  |                   | NS              | NS       | NS              |                |                  |              | NS              | NS   | NS              | NS              |           |                 |                 | 2016 Upper Harbor Debris Removal. Debris Barge was sampled.  |
| 07/27/16      | NS   | NS         |             | NS              | NS               | NS             | 42.9       | 23.7            | NS        | 18.1/16.5 d      | NS | NS | 12.3            | NS | NS | NS              | NS              |                  |                   | 0.416           | 7.36     | 32.4            |                |                  |              | 11.1            | 83.1 | 6.42            | 13.4            |           |                 |                 | 2016 Lower Harbor Dredging. Dredge was sampled.  |
| 07/20/16      | NS   | 95.1       |             | 22.8            | 56.9/52.0 d      | 33.2           | NS         | NS              | 25.3      | NS               | NS | NS | NS              | NS | NS | 513             | NS              |                  |                   | NS              | NS       | NS              |                |                  |              | NS              | NS   | NS              | NS              |           |                 |                 | 2016 Upper Harbor Debris Removal. Debris Barge was sampled.  |
| 06/27/16      | NS   | NS         |             | NS              | NS               | NS             | 21.8       | 32.8            | NS        | 14.4/13.4 d      | NS | NS | 8.15            | NS | NS | NS              | NS              |                  |                   | 0.473           | 9.53     | 48.6            |                |                  |              | 13.92           | 63.0 | 6.63            | 8.96            |           |                 |                 | 2016 Lower Harbor Debris Removal. Debris Barge was sampled.  |
| 06/13/16      | NS   | 10.0       |             | 14.4            | NS               | NS             | 36.5       | NS              | 0.630     | 6.37/5.45 d      | NS | NS | NS              | NS | NS | 47.1            | NS              |                  |                   | NS              | NS       | NS              |                |                  |              | NS              | NS   | NS              | NS              |           |                 |                 | 2016 Upper Harbor Debris Removal. Debris Barge was sampled.  |
| 05/23/16      | NS   | NS         |             | NS              | NS               | NS             | 11.9       | 1.88            | NS        | 28.2             | NS | NS | 23.8/24.0d      | NS | NS | NS              | NS              |                  |                   | 5.59            | 3.38     | 22.1            |                |                  |              | 3.93            | 15.1 | 1.32            | 21.9            |           |                 |                 | 2016 Lower Harbor Debris Removal. Debris Barge was sampled.  |
| 05/16/16      | NS   | 5.89       |             | 11.8            | NS               | NS             | 41.7       | NS              | 3.96      | 3.86/2.40 d      | NS | NS | NS              | NS | NS | 34.9            | NS              |                  |                   | NS              | NS       | NS              |                |                  |              | NS              | NS   | NS              | NS              |           |                 |                 | 2016 Upper Harbor Debris Removal. Debris Barge was sampled.  |
| 04/25/16      | NS   | NS         |             | NS              | NS               | NS             | 10.9       | 6.02            | NS        | 14.7             | NS | NS | 6.55/6.46d      | NS | NS | NS              | NS              |                  |                   | 2.26            | 7.43     | 11.6            |                |                  |              | 6.28            | 8.57 | 3.43            | 6.04            |           |                 |                 | 2016 Lower Harbor Dredging and Debris Removal. Dredge was sampled.   |
| 03/22/16      | NS   | NS         |             | NS              | NS               | NS             | 12.6       | 7.48            | NS        | 2.38/2.16 d      | NS | NS | 0.578           | NS | NS | NS              | NS              |                  |                   | 0.0804          | 2.53     | 0.553           |                |                  |              | 6.38            | 8.81 | 5.25            | 0.379           |           |                 |                 | 2016 Lower Harbor Dredging and Debris Removal. Dredge was sampled.   |
| 02/18/16      | NS   | NS         |             | NS              | NS               | NS             | 4.88       | 1.34            | 0.114     | 2.69             | NS | NS | 0.979/1.13d     | NS | NS | NS              | NS              |                  |                   | 0.00            | 1.33     | 1.10            |                |                  |              | 0.864           | 3.36 | 1.62            | 0.870           |           |                 |                 | 2016 Combined Lower Harbor Dredging and Parcel 265 Excavation monitoring events.   |
| 01/26/16      | NS   | NS         |             | NS              | NS               | NS             | 14.1       | 4.39            | NS        | 4.82             | NS | NS | 0.867/1.08d     | NS | NS | NS              | NS              |                  |                   | 0.208           | 2.04     | 0.965           |                |                  |              | 4.75            | NS   | 2.07            | 0.278           |           |                 |                 | 2016 Lower Harbor Debris Removal only.   |
| 01/21/16      | NS   | NS         |             | NS              | NS               | NS             | 2.81       | 0.787           | 0.076     | 0.916            | NS | NS | NS              | NS | NS | NS              | NS              |                  |                   | NS              | NS       | 0.071           |                |                  |              | NS              | NS   | NS              | NS              |           |                 |                 | 2016 Parcel 265 Excavation air monitoring event. Pump #21 stopped at 1033.   |





| Station | Location        |
|---------|-----------------|
| 24      | Aerovox         |
| 25      | Manomet         |
| 27      | Porter          |
| 30      | Fibre Leather   |
| 42      | NSTAR N         |
| 43      | Veranda         |
| 44      | Taber           |
| 46      | Coffin          |
| 47      | Area C Downwind |
| 50      | Area D Downwind |
| 53      | Dredge          |
| 55      | Aerovox West    |
| 56      | Acushnet Park   |
| 57      | Riverside Park  |
| 58      | Pearl           |
| 59      | Popes           |
| 60      | Washburn        |
| 62      | Century House   |
| 64      | Pilgrim         |
| 65      | CAD Cell Dredge |
| 66      | Huttleston      |
| 67      | Revere          |
| 68      | Marsh Island    |
| 69      | North Street    |
| 74      | Beach Street    |



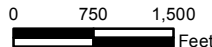
- Residential Ambient Air Sampling Station Location (Historical)
- ▲ Commercial Ambient Air Sampling Station Location (Historical)
- Residential Ambient Air Sampling Station Location (New)
- ▲ Commercial Ambient Air Sampling Station Location (New)

**Legend**



EPA CAD CELL

Aerial Photography MASSGIS 2014



1:21,600

**JACOBS**

Available Ambient Air Sampling Station Locations

New Bedford Harbor Superfund Site

NAME: jacob

DATE: 8/9/2018

Figure

Path: Y:\NBH\Projects\3565\GIS\120180307\AcGIS\NBH\_ambient\_sampling\_stations\_20180807.mxd