

Table E-1  
 Ambient Air Monitoring Program - Total Detectable PCB Homologues  
 New Bedford Harbor Superfund Site  
 Current as of 12/20/2017

Sampling Date	PCB Concentration by Location (ng/m <sup>3</sup> in 24-hour time-weighted average) <sup>1</sup>																															
	24	25	25	27	30 Fibre	42	43	44	46	Area C			Area D			53	55	56	57	58	59	60	61	62	63	64		65	66	67	68	
	Aerovox	Manomet	Cliftex	Porter	Leather	NSTAR North	Veranda	Taber	Coffin	47	48	49	50	51	52	Dredge	Aerovox West	Acushnet Park	Riverside Park	Pearl	Popes	Wash-burn	South Fence	Century House	Boathouse	Pilgrim		LHCC Dredge	Huttle-ston	Rever e	Marsh Island	
11/28/17	NS	NS		NS	NS	NS	11	22	NS	48/29d	NS	NS	6.8	NS	NS	NS	NS			18	5.2	13				1.7	6.5	2.5	9.3		2017 Lower Harbor Best Value remedial event. Unvalidated Results.	
11/15/17	NS	29		1.5	43	4.8	NS	NS	NS	31/34d	NS	NS	25	NS	NS	825	NS			NS	NS	NS				NS	NS	NS	NS		2017 Cable Crossing remedial event. Unvalidated Results.	
10/23/17	NS	NS		NS	NS	NS	5	24	NS	75/120d	NS	NS	32	NS	NS	NS	NS			5	22	97				16	45	2	35		2017 Lower Harbor Best Value remedial event.	
10/19/17	NS	34		23	22	28	NS	NS	NS	29	NS	NS	15	NS	NS	171	NS			NS	NS	NS				NS	NS	NS	NS		2017 Cable Crossing remedial event. The duplicate sample for Station 47--Area C did not run longer than 12 hours and was not sent to the laboratory for analysis.	
09/26/17	NS	NS		NS	NS	NS	34	6	NS	42.9/25d	NS	NS	46	NS	NS	NS	NS			6	13	48				15	33	ND	26		2017 Lower Harbor Best Value remedial event.	
09/13/17	NS	82		35	41	30	NS	NS	NS	8/15d	NS	NS	16	NS	NS	NS	NS			NS	NS	NS				NS	NS	NS	NS		2017 Cable Crossing background event.	
08/24/17	NS	NS		NS	NS	NS	NS	7.57/24.4d	NS	NS	NS	NS	NS	NS	NS	NS	NS			NS	NS	3.82				NS	NS	NS	16.9	38.6		2017 Marsh Island Excavation results.
07/19/17	NS	NS		NS	NS	NS	70.8	21.1	NS	34.2/18.8d	NS	NS	9.38	NS	NS	NS	NS			14.0	13.0	44.7				42.4	NS	26.8	17.6	49.4		2017 Lower Harbor Best Value/Marsh Island background event. Station 50 Area D ran for 878 minutes, but was retained because it ran for more than 12 hours. Unvalidated Results.
04/03/17	NS	4.79		ND <sub>R</sub>	NS	NS	3.60	ND <sub>R</sub>	2.54	2.88	NS	NS	ND <sub>R</sub>	NS	NS	ND <sub>R</sub>	NS			ND <sub>R</sub>	3.01	ND <sub>R</sub>				ND <sub>R</sub>	NS	ND <sub>R</sub>	ND <sub>R</sub>			2017 Upper Harbor Dredging-Lower Harbor CAD Cell filling. The pump at Area D failed by mid-afternoon. The pump used on the dredge was removed after 8 hours and placed at Area D. Both Area D and the dredge were monitored for their full time intervals. The pump for the duplicate at Area C shut down sometime after inspection. Because it didn't run for at least 12 hours, the sample was discarded. Due to a laboratory error, all ND results (less than 1.39 ng/m <sup>3</sup> ) were rejected as a result of data validation. These are indicated by ND <sub>R</sub> .
03/29/17	NS	NS		NS	NS	NS	5.94	NS	ND	7.15/7.67d	NS	NS	NS	NS	NS	NS	NS			ND	NS	NS	NS			NS	NS	NS	NS			2017 Upper Harbor Excavation PMC results.
03/08/17	NS	6.92		11.5	NS	NS	29.9	2.00	15.2	<1.37/ <1.39d	NS	NS	<1.39	NS	NS	71.9	NS			NS	<1.39	<1.39	<1.38			12.8	NS	5.35	<1.39			2017 Upper harbor dredging lower harbor CAD cell placements. Note Pearl (#58) pump had stopped in mid-collection. The dredge pump (#53) had only run for 40 minutes prior to shutdown. The dredge pump (#53) was placed at #58 Pearl for remainder of day to collect a 6.5 m <sup>3</sup> sample. The dredge pump (#53) was placed onboard the dredge the following day (3/9/17) to collect a total sample of 2.15 m <sup>3</sup> . This was also the first round that was analyzed entirely by the low resolution mass spec method.
02/23/17	NS	NS		NS	NS	NS	4.03	NS	22.7	2.40	NS	NS	NS	NS	NS	NS	NS			1.68	NS	NS	NS			NS	NS	NS	NS			2017 Upper Harbor Excavation PMC results. The duplicate pump for Station #47 Area C failed and no duplicate sample was submitted for analysis. Unvalidated results.
01/25/17	NS	4.53		2.57	NS	NS	11.4	2.67	9.41	2.43/ 2.65d	NS	NS	2.66	NS	NS	6.35	NS			NS	0.803	NS	6.58			2.91	NS	3.84	3.07			2017 Upper harbor dredging lower harbor CAD cell placements.
01/12/17	NS	NS		NS	NS	NS	18.2	NS	15.9	1.90/1.90d	NS	NS	NS	NS	NS	NS	NS			<0.061	NS	NS	NS			NS	NS	NS	NS			2017 Upper Harbor Excavation PMC results.
12/06/16	NS	NS		NS	NS	NS	3.56	0.679	NS	5.32/5.10d	NS	NS	5.41	NS	NS	NS	NS			NS	NS	1.57	6.08			1.14	11.7	0.48	4.86			2016 Lower Harbor Dredging in Moby Dick Marina Area A36.
12/01/16	NS	NS		NS	NS	NS	19.7	NS	1.04	1.10/ 1.21d	NS	NS	NS	NS	NS	NS	NS			0.0007	NS	NS	NS			NS	NS	NS	NS			2016 Upper Harbor Excavation PMC results.

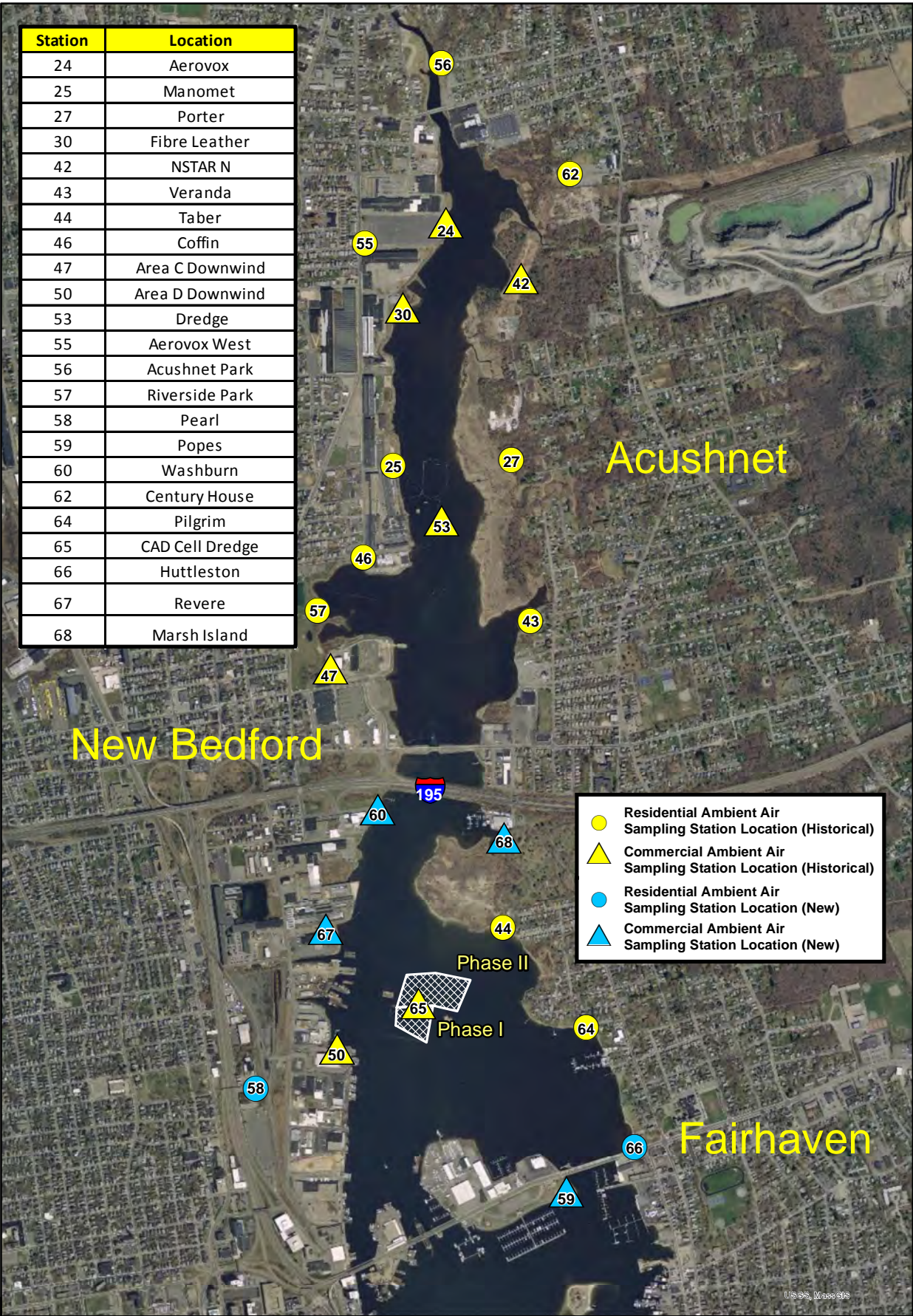
Table E-1  
 Ambient Air Monitoring Program - Total Detectable PCB Homologues  
 New Bedford Harbor Superfund Site  
 Current as of 12/20/2017


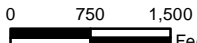

Sampling Date	PCB Concentration by Location (ng/m <sup>3</sup> in 24-hour time-weighted average) <sup>1</sup>																														
	24	25	25	27	30 Fibre	42	43	44	46	Area C			Area D			53	55	56	57	58	59	60	61	62	63	64	65		66	67	68
	Aerovox	Manomet	Cliftex	Porter	Leather	NSTAR North	Veranda	Taber	Coffin	47	48	49	50	51	52	Dredge	Aerovox West	Acushnet Park	Riverside Park	Pearl	Popes	Wash-burn	South Fence	Century House	Boathouse	Pilgrim	LHCC Dredge		Huttle-ston	Rever e	Marsh Island
11/10/16	NS	NS		NS	NS	NS	13.7	NS	4.72	1.64/1.63 d	NS	NS	NS	NS	NS	NS		0.658	NS	NS	NS				NS	NS	NS	NS		2016 Upper Harbor Pre- excavation PMC results.	
11/07/16	NS	NS		NS	NS	NS	6.26	4.07	NS	3.38	NS	NS	5.82/3.75d	NS	NS	NS	NS		0.416	3.55	7.29				2.10	3.19	NS	5.57		2016 Lower Harbor Dredging in Area A34. Dredge was sampled.	
10/19/16	NS	NS		NS	NS	NS	85.2	18.2	NS	26.2	NS	NS	21.1/24.4d	NS	NS	NS	NS		3.89	13.0	30.2				10.6	17.1	NS	22.9		2016 Lower Harbor Dredging in Area A34. Dredge was sampled.	
09/20/16	NS	NS		NS	NS	NS	35.3	18.9	NS	21.4	NS	NS	20.6/22.0d	NS	NS	NS	NS		2.50	NS	59.5				15.7	37.4	NS	25.9		2016 Lower Harbor Dredging in Area A34. Dredge was sampled.	
08/18/16	NS	NS		NS	NS	NS	97.6	19.1	NS	17.1/17.1 d	NS	NS	6.56	NS	NS	NS	NS		3.24	10.5	12.6				11.6	30.1	11.6	9.95		2016 Lower Harbor Dredging in Area 35B. Dredge was sampled.	
08/11/16	NS	61.1		32.2	35.2/39.2d	35.6	NS	NS	NS	NS	NS	NS	NS	NS	704	NS			NS	NS	NS				NS	NS	NS	NS		2016 Upper Harbor Debris Removal. Debris Barge was sampled.	
07/27/16	NS	NS		NS	NS	NS	42.9	23.7	NS	18.1/16.5 d	NS	NS	12.3	NS	NS	NS	NS		0.416	7.36	32.4				11.1	83.1	6.42	13.4		2016 Lower Harbor Dredging. Dredge was sampled.	
07/20/16	NS	95.1		22.8	56.9/52.0 d	33.2	NS	NS	25.3	NS	NS	NS	NS	NS	513	NS			NS	NS	NS				NS	NS	NS	NS		2016 Upper Harbor Debris Removal. Debris Barge was sampled.	
06/27/16	NS	NS		NS	NS	NS	21.8	32.8	NS	14.4/13.4 d	NS	NS	8.15	NS	NS	NS	NS		0.473	9.53	48.6				13.92	63.0	6.63	8.96		2016 Lower Harbor Debris Removal. Debris Barge was sampled.	
06/13/16	NS	10.0		14.4	NS	NS	36.5	NS	0.630	6.37/5.45 d	NS	NS	NS	NS	47.1	NS			NS	NS	NS				NS	NS	NS	NS		2016 Upper Harbor Debris Removal. Debris Barge was sampled.	
05/23/16	NS	NS		NS	NS	NS	11.9	1.88	NS	28.2	NS	NS	23.8/24.0d	NS	NS	NS	NS		5.59	3.38	22.1				3.93	15.1	1.32	21.9		2016 Lower Harbor Debris Removal. Debris Barge was sampled.	
05/16/16	NS	5.89		11.8	NS	NS	41.7	NS	3.96	3.86/2.40 d	NS	NS	NS	NS	34.9	NS			NS	NS	NS				NS	NS	NS	NS		2016 Upper Harbor Debris Removal. Debris Barge was sampled.	
04/25/16	NS	NS		NS	NS	NS	10.9	6.02	NS	14.7	NS	NS	6.55/6.46d	NS	NS	NS	NS		2.26	7.43	11.6				6.28	8.57	3.43	6.04		2016 Lower Harbor Dredging and Debris Removal. Dredge was sampled.	
03/22/16	NS	NS		NS	NS	NS	12.6	7.48	NS	2.38/2.16 d	NS	NS	0.578	NS	NS	NS	NS		0.0804	2.53	0.553				6.38	8.81	5.25	0.379		2016 Lower Harbor Dredging and Debris Removal. Dredge was sampled.	
02/18/16	NS	NS		NS	NS	NS	4.88	1.34	0.114	2.69	NS	NS	0.979/1.13d	NS	NS	NS	NS		0.00	1.33	1.10				0.864	3.36	1.62	0.870		2016 Combined Lower Harbor Dredging and Parcel 265 Excavation monitoring events.	
01/26/16	NS	NS		NS	NS	NS	14.1	4.39	NS	4.82	NS	NS	0.867/1.08d	NS	NS	NS	NS		0.208	2.04	0.965				4.75	NS	2.07	0.278		2016 Lower Harbor Debris Removal only.	
01/21/16	NS	NS		NS	NS	NS	2.81	0.787	0.076	0.916	NS	NS	NS	NS	NS	NS	NS		NS	NS	0.071				NS	NS	NS	NS		2016 Parcel 265 Excavation air monitoring event. Pump #21 stopped at 1033.	
01/18/16	0.216	0.329		NS	0.0185	11.9	1.68	0.496	0.138	0.298	NS	NS	0.102/0.117 d	NS	NS	NS	0.00348		NS	NS	NS				1.87	NS	NS	NS		2016 Upper Harbor Post-Dredge Sampling Event. Location #27 Porter not sampled due to lack of access caused by snow.	
12/15/15	NS	NS		NS	NS	NS	NS	NS	NS	NS	NS	NS	5.12	NS	NS	NS	NS		0.707	NA	4.55				6.35	13.5/13.2d	13.4	1.47		2015 Lower Harbor Debris Removal only. Location #59 Popes was collected but the media was found lying on the ground so it was not analyzed. Strong winds were experienced during most of the evening.	
11/18/15	14.6	NS		NS	12.6	4.13	NS	3.11	6.27	14.0	NS	NS	13.7	NS	NS	35.4/38.4 d	2.30		NS	NS	NS				2.13	NS	NS	NS		2015 Hydraulic Dredging in Upper Harbor Area T.	
11/02/15	NS	NS		NS	NS	NS	NS	13.2	NS	NS	NS	NS	34.9	NS	NS	NS	NS		5.68	9.72	25.4				12.8	NS	10.9	23.5		2015 Lower Harbor Pre-debris removal.	
10/14/15	22.6	16.4		17.4	4.48	13.0	42.8	19.5	7.32	23.6	NS	NS	17.4	NS	NS	186	0.352								11.4					2015 Hydraulic Dredging in Upper Harbor - Area S; Samples 25, 27, 30, 42, 55 and one blank analyzed on 10 day TAT for submarine power cable removal activities. The pump for the duplicate sample at Station #50 - Area D failed to run the equivalent time of the primary sample and was voided.	
09/23/15	150	180		3.9	57/50d	8.1	19	16	50	63	NS	NS	42	NS	NS	300	7.4								7.5					2015 Hydraulic Dredging in Upper Harbor Area H.	
8/26/2015	62	46/35d		22	19	34	84	13	21	35	NS	NS	32	NS	NS	1900	1.2								15					2015 Hydraulic Dredging in Upper Harbor - Area S.	
7/21/2015	44	48		10	44	20	37	19	27	16	NS	NS	11/15d	NS	NS	NS	7.2								11					2015 Pre-Dredge Samples for the Upper Harbor. Location #56 - Acushnet Park can no longer be used as a sampling station due to frequent vandalism of pump and/or media.	
6/3/2015	45	38		0.97	17	4.2	8.6	1.2	5.6	13/14d	NS	NS	16	NS	NS	NS	1.9	1.1							1.2	NS				2015 Off Season Data Collection.	
4/22/2015	52	26		NA	20	3.4	16	7.6	12	0.016	NS	NS	3.6	NS	NS	NS	4.9	NS							5.7	NS				2015 Off Season Data Collection and Pre-dredge sampling for the Upper Harbor. Pump at Station #27 failed to run long enough to collect a viable sample so it was not analyzed.	





Station	Location
24	Aerovox
25	Manomet
27	Porter
30	Fibre Leather
42	NSTAR N
43	Veranda
44	Taber
46	Coffin
47	Area C Downwind
50	Area D Downwind
53	Dredge
55	Aerovox West
56	Acushnet Park
57	Riverside Park
58	Pearl
59	Popes
60	Washburn
62	Century House
64	Pilgrim
65	CAD Cell Dredge
66	Huttleston
67	Revere
68	Marsh Island



<b>Legend</b>  EPA CAD CELL	Aerial Photography MASSGIS 2014  1:21,600	 Available Ambient Air Sampling Station Locations New Bedford Harbor Superfund Site <small>NAME: jacobn Date: 11/6/2017</small> Figure
---	--	---

Path: Y:\NBH\Projects\356G\001\2017\109A\GIS\NBH\_ambient\_sampling\_stations\_2017\_109.mxd