

Site Redevelopment Profile

Davis Timber Company Superfund Site

107 Jackson Street, Hattiesburg, Mississippi 39401

Property Overview

Size

30 acres

Current Site Uses

- A community center.
- An animal shelter.
- A dog park.
- Parking.
- Trail connections.
- Pollinator habitat.

Use Restrictions

- Institutional controls restrict land uses on the site's capped area.
- Residential use is prohibited.

Surrounding Population

6,006

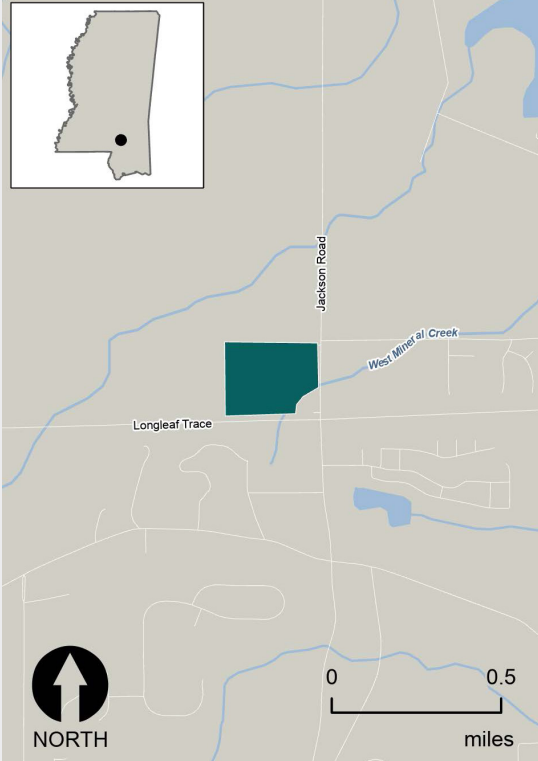
1 MILE

36,855

3 MILES

62,600

5 MILES



The site's location in Mississippi.

Site History and Redevelopment Timeline

1972-1987

The Davis Timber Company operated a wood-treating facility on site.

1974-1987

The state discovered contamination at the site.

1987

MDEQ ordered Davis Timber Company to discontinue wood treating operations at the site.

2000

EPA placed the site on the NPL.

2001

MDEQ lifted the ban on fishing in a nearby lake.

2011-2012

EPA and MDEQ cleaned up the site.

2013

The Hub City Humane Society animal shelter opened on site.

2014

EPA completed remedial action at the site.

2016

The Fields of Barktopia dog park opened on site.

2018

EPA took the site off the NPL. Community facilities and recreation resources are located on site.

History and Cleanup

Since the early 2000s, site owners, community organizations and local governments, EPA and the Mississippi Department of Environmental Quality (MDEQ) have worked together in support of a coordinated approach to the cleanup and reuse of this former wood-treating facility in Hattiesburg, Mississippi. Today, reuse plans have become reality, with several community facilities located on site.

A timber processing and wood preserving facility operated on site from 1972 until the late 1980s. Chemicals in wastewater in an on-site storage pond reached surface water drainage pathways, leading to contamination on site and downstream of the site, including documented fish kills in Country Club Lake. Due to the level of dioxin compounds in fish tissue, MDEQ banned the consumption of fish from the lake from 1989 to 2001.

EPA placed the site on the Superfund program's National Priorities List (NPL) in 2000 and selected the site's remedy in 2009. It included digging up contaminated soil and sediment, containing waste under a 3-acre capped area, controlling surface water flow, and controlling for erosion. EPA completed construction of the remedy in September 2012, two months ahead of schedule and \$400,000 under budget.

Redevelopment

Reuse considerations informed the site's remedy. A 2006 reuse assessment funded by EPA's Superfund Redevelopment Initiative found that the area was well suited for public, recreational and ecological land uses. The site owners were part of the process, and made clear their interest in seeing the site's return to beneficial use for the community. Following the assessment, the owners donated a 3-acre area for a community center and local polling location.

In 2012, plans for reusing the rest of the site moved forward, when the Hub City Humane Society leased an unused part of the site. The Hub City Humane Society is a community-funded organization that cares for homeless, neglected and abused animals. As it worked to open its doors, the community responded with a flood of donations and support. A local school donated portable buildings for use as shelters and training rooms. Contracts with local governments to care for animal control animals and drop-offs along with sponsorships from area businesses, pet hospitals and veterinary clinics helped sustain the shelter's budget. In 2014, the organization won a \$25,000 grant from a national recreation program, leading to construction of the Fields of Barktopia dog park on site. In 2015, EPA Region 4



View of Hub City Humane Society animal shelters at the site.

recognized the site property owners and the Hub City Humane Society's leadership with its Excellence in Site Reuse award. The facility opened in 2016.

Today, in addition to these facilities, the site is home to parking, recreation facilities and trail connections to the adjacent Longleaf Recreation Trail, as well as restored habitat for pollinators. With the site's remedy fully protective of public health and the environment, EPA took the site off the NPL in 2018.

"I am fully confident that they did a good job cleaning up. It's a giant beautiful field now."

Brenda Sumrall
Board President
Hub City Humane Society



Puppies awaiting adoption at Hub City Humane Society.

Contacts

For more information, please contact:

Chelsea Sebetich | (202) 566-1151
sebetich.chelsea@epa.gov

Scott Miller | (404) 562-9120
miller.scott@epa.gov

For more information see: www.epa.gov/superfund-redevelopment



Recreational trail shelter, parking area and trail connection at the site.

