

Site Redevelopment Profile

Bandera Road Ground Water Plume Site

Leon Valley, Texas

Property Overview

Size

A groundwater plume about 1 mile long by a half-mile wide and chemical releases and sources from at least two facilities

Current Site Uses

- Savings Square Shopping Center
- The Huebner-Onion Homestead and Stagecoach Stop historical landmark and natural area
- Commercial and light industrial uses

Use Restrictions

- Not yet implemented.

Surrounding Population

12,088
1 MILE

135,420
3 MILES

387,981
5 MILES

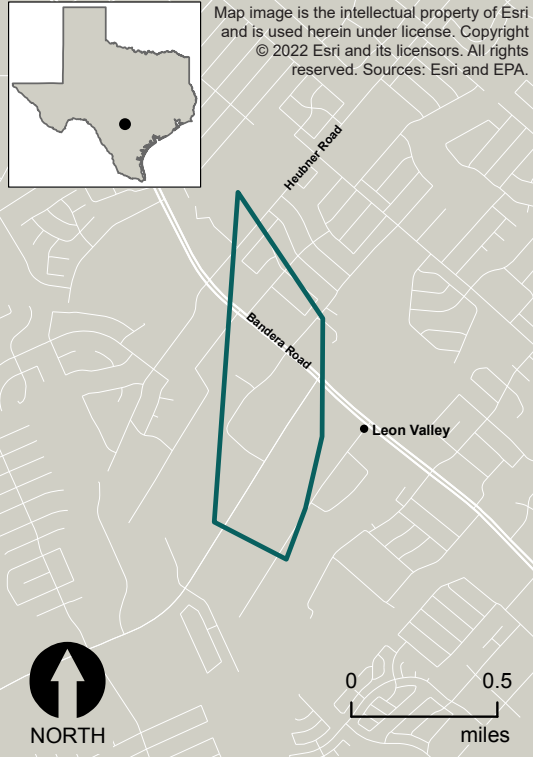


Figure 1. The location of the Bandera Road Ground Water Plume site in Texas

Site History and Redevelopment Timeline

1991

Dry cleaners began operating on part of the site.

2004

Texas Commission on Environmental Quality (TCEQ) and the Agency for Toxic Substances and Disease Registry (ATSDR) started site investigations. Investigations found tetrachloroethene (PCE) and trichloroethene (TCE) at concentrations above the drinking water standard in the Edwards Aquifer.

2005-2007

The Huebner-Onion Homestead and Stagecoach Stop on site were listed on the National Register of Historic Places. It was included in the Texas Historical Commission statewide Heritage Trail in 2006 and received Texas Landmark status in 2007.

2007

EPA conducted a removal action that included extending municipal water lines to homes with contaminated drinking water wells.

EPA added the site to the Superfund program's National Priorities List (NPL).

2010

EPA conducted a reuse assessment to identify reasonably anticipated land and groundwater uses.

2013-2020

EPA identified five areas of investigation, including a former dry cleaner as well as an active dry cleaner.

EPA selected a cleanup plan for the site to address indoor air, soil and groundwater contamination.

EPA completed the design of the soil vapor extraction and treatment system and the in-place bioremediation system.

Present

The Savings Square Shopping Center is in use and includes various active retailers. Redevelopment opportunities are also available for commercial and light industrial reuse. Cleanup is ongoing.

History and Cleanup

The site is in Leon Valley, Bexar County, Texas. It includes a groundwater plume about 1 mile long by a half-mile wide and chemical releases and sources from at least two facilities. The site includes chemical releases and sources from at least two facilities. During the investigation, EPA identified five areas of investigation, which include two dry-cleaning facilities (one former and one that was active at the time of the investigation). TCEQ investigated the site and identified the presence of PCE and TCE at levels above Texas drinking water standards. Contamination was detected in the Edwards Aquifer, which is a source of drinking water for central Texas.

EPA placed the site on the NPL in 2007. In spring 2007, EPA extended municipal water lines to residences with contaminated drinking water wells. EPA selected the cleanup plan in 2013. The cleanup plan includes actions to address indoor air contamination in the office space of the former dry cleaner, soil vapor removal in two areas, in-place bioremediation to address groundwater contamination, use restrictions and monitoring. EPA is implementing the remedy. EPA is also working with the Edwards Aquifer Authority (EAA) to plug and abandon improperly constructed or deteriorating wells, which may serve as a groundwater contamination pathway.

The site is centered in a business area, with some homes nearby, between Poss Road and Grissom Road, southwest of Bandera Road. Two Leon Valley city public water supply wells are within 1 mile of the center of the groundwater contaminant plume. EPA routinely samples these two public water supply wells to ensure public safety. EPA conducts groundwater sampling to ensure that additional wells are not affected. EPA installed systems to reduce vapor contaminants and ensure clean indoor air in buildings around the former dry-cleaning facility.

Redevelopment

The Huebner-Onion Homestead and Stagecoach Stop is a historic landmark located on the site. The homestead is located off Bandera Road, north of the intersection of Bandera Road and El Verde Road. Established in 1862 by Joseph Huebner, the homestead served primarily as a stagecoach stop for travelers in the San Antonio area. Due to the rough terrain and formidable water crossings in the area, travelers commonly used the location as a recuperation point during travel. The homestead was later occupied by Judge John Onion, who is thought to be buried on the property.

In 2005, the Huebner-Onion Homestead and Stagecoach Stop were listed on the National Register of Historic Places. It was included in the Texas Historical Commission statewide Heritage Trail in 2006 and received Texas Landmark status in 2007. A historical marker was erected in 2008 to commemorate the homestead's history.

In 2010, EPA's Superfund Redevelopment Program supported a reuse planning process for the site to complement the local government's sustainability goals and revitalization strategies. One of the site's source areas was located at the Savings Square Shopping Center. The shopping center is currently in use housing various commercial retailers.

EPA's early collaboration with TCEQ helped ensure the safe, continued use of the Bandera Road Ground Water Plume Superfund site, including residential drinking water sources, commercial businesses and the important historic landmarks in the area. EPA will continue to work with TCEQ and the community to facilitate safe and beneficial reuses of the site.



6

residences connected to public water supply



Figure 2. Savings Square Shopping Center



Figure 3. Leon Valley Municipal Water Supply tower

Contacts

For more information, please contact:

Chelsea Sebetich | (202) 566-1151
EPA Superfund Redevelopment Program
sebetich.chelsea@epa.gov

Casey Luckett Snyder | (214) 665-7393
EPA Region 6 Redevelopment Coordinator
luckett.casey@epa.gov

