



Superfund  
Redevelopment  
Initiative

# SITE REDEVELOPMENT PROFILE

RSR Corporation Superfund Site

Dallas, Texas



**Site Location:** Westmoreland Road & Singleton Boulevard, Dallas, Texas 75207

**Size:** 13.6 square miles

**Existing Site Infrastructure:** All major types of infrastructure are located on site.

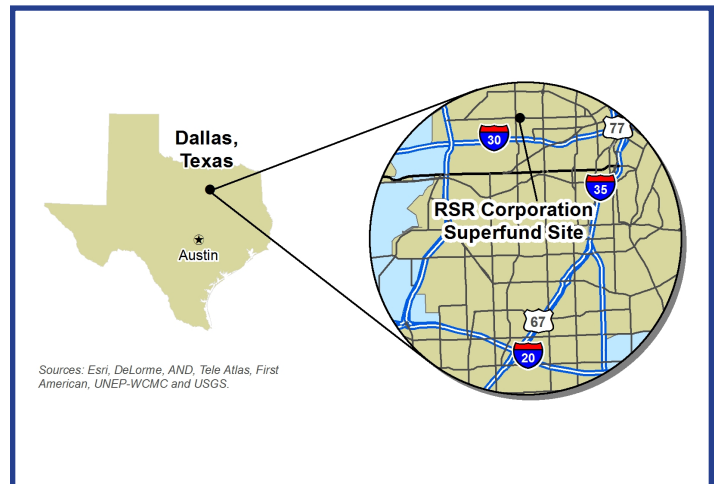
**Current Site Uses:** The site currently supports industrial, commercial, residential, recreational and public service uses.

**Use Restrictions:** Deed restrictions control access to parts of the site and protect the soil cap.

**Surrounding Population:** within 0.5 mile, 1,832 people; within 2.5 miles, 53,603 people; within 4 miles, 168,744 people.

For nearly 50 years, the West Dallas area of Dallas, Texas, was home to a major lead smelter operated by the RSR Corporation. Facility operators processed spent car batteries and scrap lead. The company sent resulting waste materials, byproducts and batteries to nearby landfills where these wastes contaminated soils, sediment and groundwater. Wind also transported lead dust from the smelter into nearby parks, schools and neighborhoods. EPA placed the RSR Corporation site on the National Priorities List (NPL) in 1995.

Neighborhoods near the site lacked access to fresh and healthy food, as well as public health and community services. Site stakeholders hoped the site's cleanup could provide new development opportunities. RSR Corporation cleaned up nearby neighborhoods by removing contaminated soils from playgrounds, day care centers and gardens. EPA cleaned up the yards of over 400 properties between 1991 and



Location of the site in Dallas, Texas.

1994. Much of the lead dust affected a nearby Dallas Housing Authority (DHA) public housing complex. By 1995, DHA had removed the contamination and rebuilt the properties that had been contaminated with lead dust. The cleanup enabled DHA to continue to offer much-needed affordable housing in the area. DHA

## SITE HISTORY AND REDEVELOPMENT TIMELINE

- 1934 - 1984** - Battery breaking and smelting facilities operated on site.
- 1984** - RSR Corporation ceased operations on site.
- 1991 - 1994** - EPA cleaned up the yards of over 400 properties.
- 1995** - EPA placed the site on the NPL. The DHA completed a removal action.
- 2002** - Several public and private schools and a YMCA facility opened on site.
- 2001 - 2004** - Additional removal actions were completed on site.
- 2002** - Goodwill Industries of West Dallas opened a 275,000-square-foot facility on site.
- 2015** - EPA Region 6 recognized both DHA and Goodwill Industries of West Dallas with Excellence in Site Reuse awards.

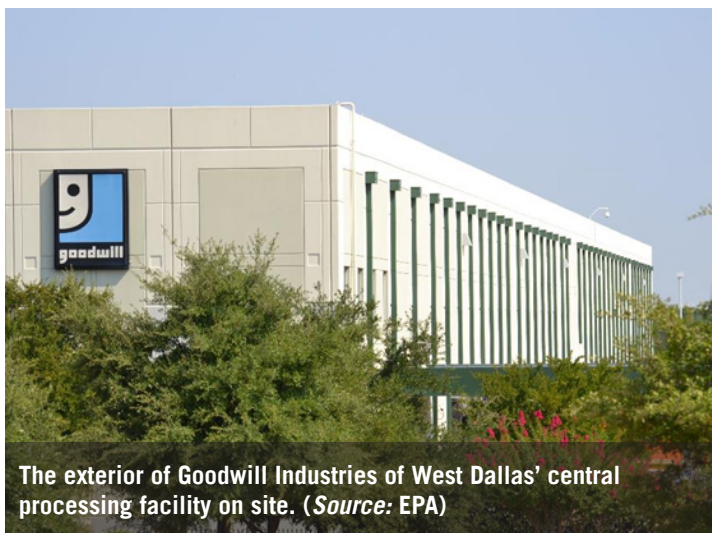
*“The Superfund cleanup has been critical to the revitalization of the area.”*

– Tim Lott, Vice President of Capital Development, Dallas Housing Authority

also maintains offices on site that employ more than 100 people.

Today, following cleanup, the site and the surrounding West Dallas area are a hub of new activity. Goodwill Industries of West Dallas acquired 46 acres from DHA and built a 275,000-square-foot facility. Open since 2002, the facility includes offices, meeting space and a retail store. Goodwill Industries of West Dallas employs over 500 people. The company focuses on hiring and training disadvantaged workers, thereby benefiting the local workforce. EPA Region 6 recognized both DHA and Goodwill Industries of West Dallas with Excellence in Site Reuse awards in November 2015 for their remarkable efforts at the site and across West Dallas.

The site cleanup also provided opportunities for other facilities to move into the area, including several public and private schools and the Lakewest YMCA facility, which opened in 2000. The YMCA offers recreation opportunities for local families and residents and hosts several community services, including a day care, a women’s healthcare clinic and a police substation. With residents now benefiting



The exterior of Goodwill Industries of West Dallas’ central processing facility on site. (Source: EPA)



from a renovated supermarket and shopping center, an animal care clinic, restaurants, and a wider range of housing options, West Dallas will continue to grow. EPA remains committed to working with local groups and agencies to support redevelopment and revitalization efforts to ensure the long-term protection of public health and the environment.

**FOR MORE INFORMATION**

Frank Avvisato  
(703) 603-8949  
[avvisato.frank@epa.gov](mailto:avvisato.frank@epa.gov)

Casey Luckett Snyder  
(214) 665-7393  
[luckett.casey@epa.gov](mailto:luckett.casey@epa.gov)



In May 2017, EPA established a task force to restore the Superfund program to its rightful place at the center of the Agency's core mission to protect health and the environment.

[epa.gov/superfund/superfund-task-force](http://epa.gov/superfund/superfund-task-force)