

What is the Warmhouse Beach Dump?

The Warmhouse Beach Dump is located on Makah Tribal lands, about three miles northwest of Neah Bay in Clallam County, Washington. The Warmhouse Beach Dump was used from the late 1960s to 2012, when a solid waste transfer station run by the Makah Tribe opened near Neah Bay. The dump received mostly municipal wastes prior to closure.

The Warmhouse Beach Dump Site was added to the Superfund National Priorities List (NPL) in December 2013. Placement on the NPL means Warmhouse Beach is a Superfund site under the Comprehensive Environmental Response, Compensation, and Liability Act (CERCLA). The Makah Tribe is the support agency and therefore plays a role in the review and concurrence of the remedial process.

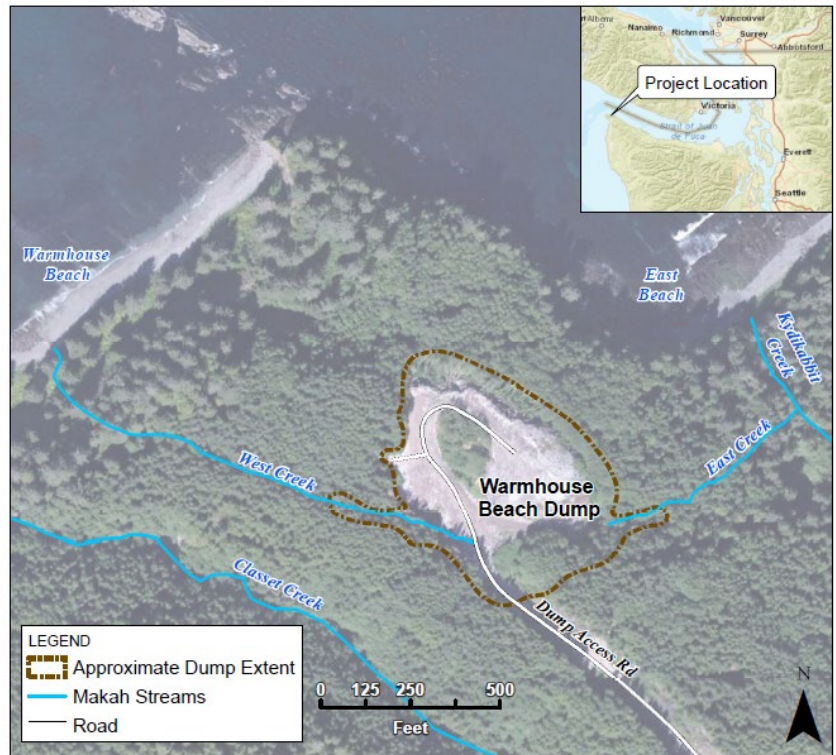


Figure 1: Warmhouse Beach Dump Location.

Why does the site need to be cleaned up?

Contaminated refuse placed in the dump has polluted the soils and sediment within the dump area. The EPA found that various metals, including arsenic and lead, and organic contaminants such as dioxins, furans, and polychlorinated biphenyls (PCBs) pose unacceptable risk to people's health and to wildlife.

What is the risk to people and wildlife from contamination in the dump?

The Makah Tribe has a Treaty protected right to use the land currently impacted by the dump for many uses including developing the area for future residential use. Contamination at the dump poses potential health risks to people who would live in the dump area. Wildlife are also exposed to contaminants in the surface soils and sediment.

EPA has determined that the Preferred Alternative, or one of the other active measures considered in the Proposed Plan, is necessary to protect public health or welfare and the environment from actual or threatened releases of hazardous substances into the environment.

The EPA's Preferred Alternative

The EPA has evaluated a range of alternatives presented in the Feasibility Study (FS). The Proposed Plan identifies the preferred cleanup alternative. EPA will select the final cleanup option for the site after considering comments from the public.

The EPA is proposing to excavate contaminated soil, sediment in East and West Creek, and refuse to a depth of approximately 10 feet and dispose of it in an off-site facility. Excavated areas would be regraded and revegetated to promote drainage and minimize erosion. Contamination that remains in deeper areas will be capped to prevent exposure. Excavated contaminated soil and waste would be loaded into containers on-site for transport and disposal off-site. This Proposed Plan and the cost estimate include the assumption that waste would be transported by barge. The conceptual layout for this alternative is shown in Figure 2.

The other alternatives included:

- No further action needed.
- Remove all contaminated soil.
- Cap all contaminated soil.

This Proposed Plan summarizes information that can be found in greater detail in the remedial investigation (RI) report, FS report, and other documents contained in the Administrative Record for this Site. The EPA encourages the public to review these documents to learn more about the Site and Superfund activities that have been conducted at the EPA project webpage at <https://www.epa.gov/superfund/warmhouse-beach>.

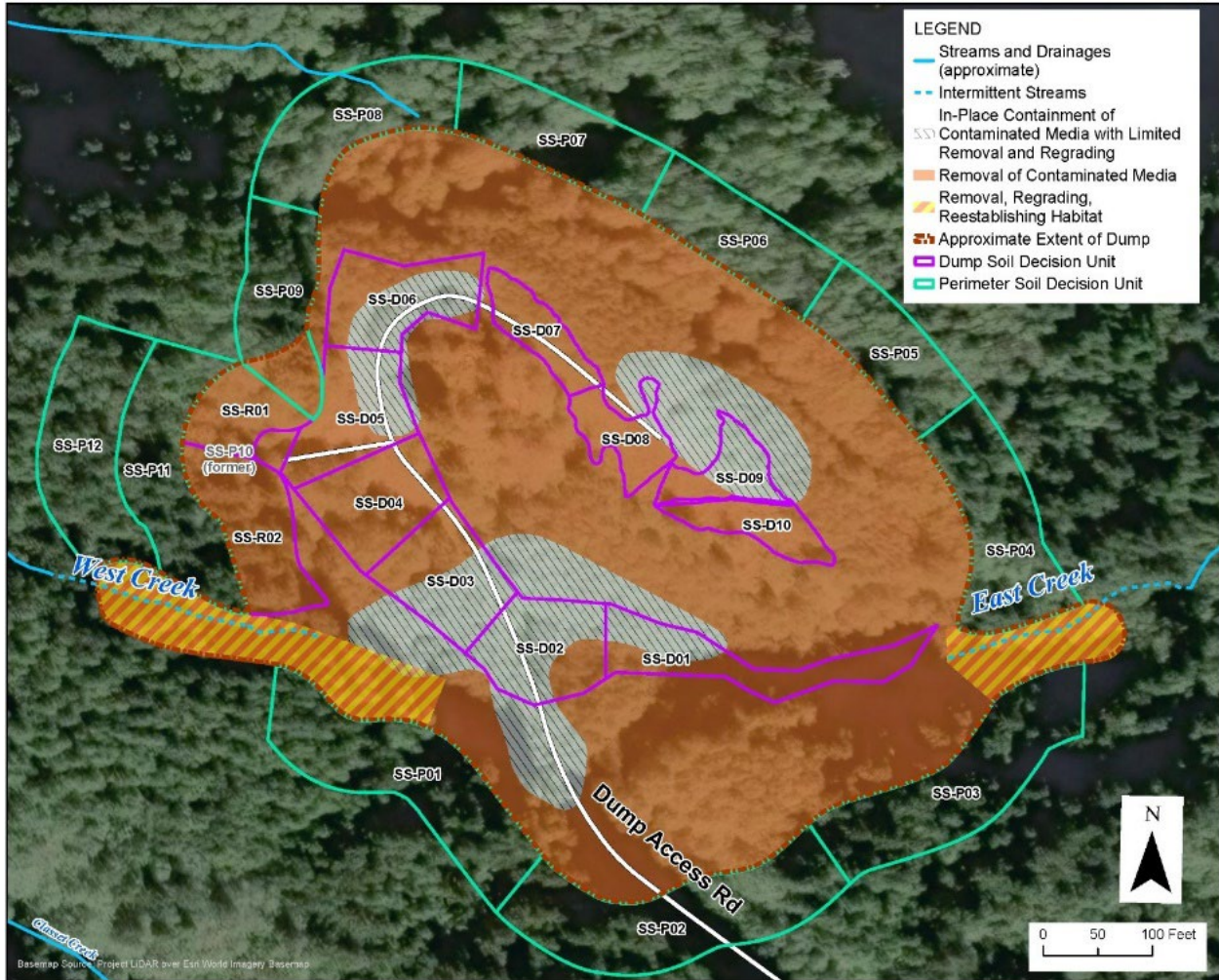


Figure 2: Remedial Action Conceptual Layout for Alternative 3



**WARMHOUSE BEACH DUMP SUPERFUND PROPOSED PLAN
FACT SHEET
MAKAH TRIBE RESERVATION
NEAH BAY, WA / REGION 10**

APRIL 2025

Public Comment Period

The Warmhouse Beach Dump Proposed Plan is available for public comment from **April 28, 2025, to May 28, 2025**. The public is encouraged to consider all alternatives, not just the Preferred Alternative. At the end of the comment period, The EPA will review all comments and consult with the Makah Tribe on the anticipated path forward.

You can provide comments on the Proposed Plan in the following ways:

1. By mail:

ATTN: Warmhouse Beach Dump Proposed Plan
c/o Ashley Grompe
U.S. EPA Region 10, 1200 Sixth Avenue, Suite 155
Superfund Records Center, Mail Stop 17-C04-1 Seattle, WA 98101

2. By email: region10@epa.gov

3. Attending public meetings and providing oral and/or written comments.

EPA will hold an in-person public meeting in English on:

Tuesday, May 13, 2025

4:30 to 6:30 p.m. – Open House
(Light refreshments provided)

5:30 p.m. – Presentation and Public Comment

Location:

Makah Tribal Community Hall

81 3rd Ave, Neah Bay, WA 98357

Read the Proposed Plan and related documents online at:

www.epa.gov/superfund/warmhouse-beach.

What happens after this public comment period?

EPA will consider public comments when selecting a final cleanup action for the Warmhouse Beach Dump. The EPA may modify the preferred alternative or select another cleanup alternative based on new information or public comments. After additional consultation with the Makah Tribe the EPA will then issue the Record of Decision (ROD). A responsiveness summary document will then be issued with the ROD with the EPA’s written responses to comments. The documents will be publicly available and posted on the project webpage.

What is CERCLA and what is next in the Superfund process?

The Comprehensive Environmental Response, Compensation, and Liability Act (CERCLA) was passed into law by Congress in 1980. This law created the Superfund program, responsible for cleaning up some of the nation’s most contaminated sites, and responding to environmental emergencies, oil spills and natural disasters. This includes cleaning up the Warmhouse Beach Dump site.

The figure to the right shows the Superfund process. We are currently at the Proposed Plan stage of the process.

If waste is left in place after the construction of the cleanup is complete, the EPA would continue to monitor and collect data that will be assessed during each five-year review. The EPA will be responsible for ongoing operation and maintenance costs.

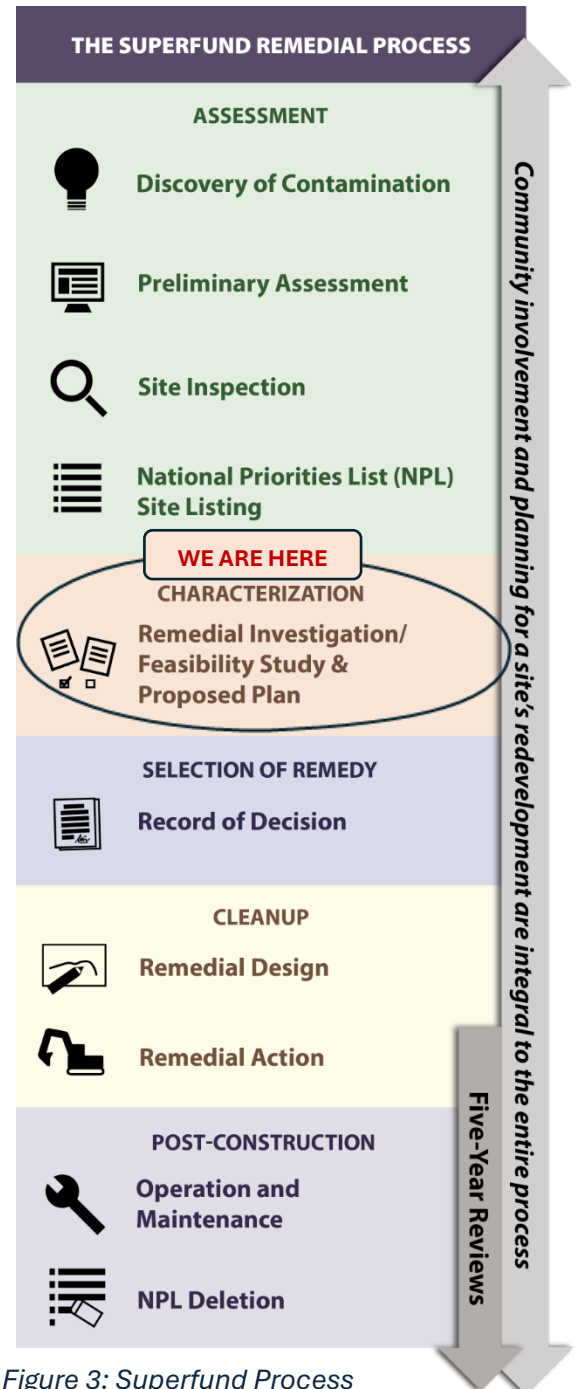


Figure 3: Superfund Process



**WARMHOUSE BEACH DUMP SUPERFUND PROPOSED PLAN
FACT SHEET
MAKAH TRIBE RESERVATION
NEAH BAY, WA / REGION 10**

APRIL 2025

For More Information

Ashley Grompe, EPA Remedial Project Manager at (206) 553-1284,
grompe.ashley@epa.gov

Caressa Long, EPA Community Involvement Coordinator at (206) 553-6056,
long.caressa@epa.gov

Ryan Erhart, PhD, Makah Tribe Environmental Program Manager at (360) 645-3076,
ryan.erhart@makah.com



Visit: <https://www.epa.gov/superfund/warmhouse-beach>

*If you need materials in an alternative format, please contact **Caressa Long** at 206-553-6056.*

Stay Connected: *If you would like to receive information about this site in the future, please email Caressa Long at long.caressa@epa.gov and tell us if you prefer updates to your email or mailing address or wish to be taken off our mailing list.*